



# Westbury Crier

VOLUME 61, ISSUE 12

DECEMBER 2016

## Deck the Halls Parade December 17, 5PM

Westbury has many delightful traditions. The 18th Annual Deck the Halls Parade, which will be held on Saturday, December 17, at 5PM is one of these. This parade is a labor of love sponsored by the Mandell family. While this parade is not a WCC sponsored event, we are happy to advertise it and participate in it. The parade organizers hope residents on the route will light up their homes and yards for the parade. It is a great time to host a block party and get to know your neighbors. If you don't live along the route, find a friend who does, or make a new friend. This year's theme is "Mythical Creatures." Check out [www.deckthehallsparade.org](http://www.deckthehallsparade.org) for more information.



**Parade Route:** The parade lines up at 5505 Belrose in front of the old post office, marches down Burlinghall, then right on Ashcroft, around to and down Warm Springs, right on Atwell, and back to Belrose. If you are coming to watch, pick a spot at one of the intersections for the best view. Please do not stand in the street, especially where the vehicles need to turn.

**So many magical surprises await you on the route of the 18th Annual Deck the Halls Parade! Don't miss it!**



## HOLIDAY EVENTS

**"Velveteen Rabbit" play**

Sat., December 3-17

Company OnStage @ St. John's

For more information, see page 16

**Snow Hill in the Park**

Sun., December 4, 3-5PM

Willow Waterhole

For more info., see page 21

**Holiday Social Potluck**

Wed., December 7, 11-2PM

Platou Community Center

For more information, see page 4

**YARD OF THE MONTH**

**HOLIDAY DECORATION JUDGING**

SATURDAY, DECEMBER 10 &

SUNDAY, DECEMBER 11



## HEAVY TRASH SCHEDULE

**DECEMBER 8**

**JUNK WASTE**

Pick up for ALL of Westbury is

Thursday, December 8

**\*DO NOT PLACE JUNK WASTE**

**ON CURB**

**UNTIL 6pm DECEMBER 2**



**Jan. 12: Tree Waste  
Pick-up**

## Westbury is Distinguished Neighborhood of the Year Mayor Proud Partner 2016

Westbury was honored on Nov. 7 as the 2016 Distinguished Neighborhood of the Year. To read more, see page 6.



## WCC OFFICE HOLIDAY HOURS

Closed: Dec. 21- January 2

More info. on page 5

# IMPORTANT CONTACTS

## WCC OFFICE

5322 W. Bellfort #107, Houston, TX 77035

Jennifer Edmondson.....WCC Office Manager

NOTARY SERVICE IS AVAILABLE TO DUES PAYING

WESTBURY RESIDENTS during office hours or by appt.

## OFFICE HOURS/CONTACT

Monday - Thursday.....9:00AM-1:00PM

Closed Friday, Saturday, Sunday, and holidays

Telephone.....713-723-5437

Email.....westburycc@sbcglobal.net

Deed Restrictions.....westburycc@sbcglobal.net

Visit our website at [www.westburycrier.com](http://www.westburycrier.com)

“Like” us on Facebook at Westbury Houston

## SECURITY

Pct. 5 Constables (WAP).....281-463-6666

including suspicious activity, burglar alarms and vacation watch

Emergency.....911

Houston Police Dept. Non-Emergency..... 713-884-3131

Westbury HPD Storefront.....832-394-7520

## CITY OF HOUSTON

District K Council Member, Larry Green.....832-393-3016

District C Council Member, Ellen Cohen.....832-393-3004

Deed Restriction Enforcement (City Legal).....832-393-6333

Platou Community Center.....713-726-7107

Meyer Library.....832-393-1840

Mayor’s Citizen Assistance Office.....832-393-0955

Houston Help & Information.....311

For missed garbage pickup, water line breaks, potholes sewer repairs, dead animals, traffic signals, heavy trash violations, neighborhood nuisances, and other city services

## CENTERPOINT ENERGY

Electric outage.....713-207-2222

Suspected natural gas leak.....713-659-2111

Street light repairs.....713-207-2222

Make sure to give pole number

## OTHER IMPORTANT CONTACTS

County Commissioner Gene Locke.....713-755-6111

Graffiti.....www.braysoaksmid.org

Shopping Cart Removal.....www.braysoaksmid.org

Brays Oaks Mgmt. District - Use “report a problem” link

Poison Control.....1-800-764-7661

Harris County Tax office.....713-368-2000

Harris County Appraisal District.....713-957-7800

## 2017 WCC BOARD OF DIRECTORS

If no contact information is provided, contact the WCC Office at [westburycc@sbcglobal.net](mailto:westburycc@sbcglobal.net) or 713-723-5437

## EXECUTIVE BOARD

President.....Becky Edmondson

[wccpresident@westburycrier.com](mailto:wccpresident@westburycrier.com) or 713-443-3951

Vice President.....Marcia Hartman

Secretary.....Dan Vega

Treasurer.....VACANT

## DIRECTORS AT LARGE

Communications.....Matt Bruns

Community Relations.....Cindy Chapman

[wcccommunityrelations@westburycrier.com](mailto:wcccommunityrelations@westburycrier.com)

Deed Restrictions.....Jennifer Edmondson

[westburycc@sbcglobal.net](mailto:westburycc@sbcglobal.net)

Flood Control & Infrastructure.....Donna Strom

Greenspace Beautification.....VACANT

Membership.....Jeff Benavides

Security.....VACANT

Volunteer & Event Coordinator .....Robert Montgomery

[rmontgomery002@comcast.net](mailto:rmontgomery002@comcast.net)

## SECTION DIRECTORS

Westbury 1.....VACANT

Westbury 2.....VACANT

Westbury 3.....Tony Robert

Westbury 3.....Recy Dunn

Westbury 4.....Judy Overton

Westbury 4.....Eugene Sirls

Westbury 5.....Virginia Livingston

[Westbury5E@westburycrier.com](mailto:Westbury5E@westburycrier.com)

Westbury 5.....VACANT

Westbury South.....Sunny Davis

Parkwest 1.....William Grimsinger

Parkwest 2.....Jeffrey Weiss

[Jweiss@txchiro.edu](mailto:Jweiss@txchiro.edu)

Parkwest 3.....Joe Niles

[parkwest3@westburycrier.com](mailto:parkwest3@westburycrier.com)

## NEWSLETTER INFORMATION

Published by.....Westbury Civic Club, Inc.

Editor-In-Chief..... Jennifer Edmondson

Edited by.....WCC Publication Committee

Advertising..... 713-723-5437/ [westburycc@sbcglobal.net](mailto:westburycc@sbcglobal.net)

**Ad Disclaimer:** The WCC neither represents nor endorses an advertisement in the newsletter. Perform your own due diligence before contacting any advertiser.

# President's Message

As I write the December President's message, Thanksgiving is just a few days away, so thankfulness is on my mind. I am so thankful to live in a community that has so many wonderful residents. When we were putting together the WCC 60th anniversary celebration for October, I was reminded time and time again of the thousands of residents who have worked so hard to keep Westbury as a viable neighborhood over the last 60 years. There were many challenges in those early years to bring city services to Westbury. This is a task we still have today with our aging infrastructure.

**The Westbury Civic Club is a volunteer organization and Westbury has the best volunteers!** I want to take a minute to really thank the Board of the Westbury Civic Club who give Westbury much of their time each month. We owe them all a big "thank you" as each of them has contributed to making Westbury a better place to live. Thank you, WCC Board Members.

The WCC has one paid employee, Jennifer Edmondson, who oversees all the office functions. As you can imagine, one employee for 5,000 homes is quite a challenge. But Jennifer makes it work and on top of that puts together a quality publication each month of the year and runs the two White Elephant sales. Thank you, Jennifer.



You will read in this month's Crier about many of the groups that make the Westbury area unique. November was a busy month for volunteers. Read about the success of this 50th year of the White Elephant sale. The Neighborhood to Trails -Southwest group has been busy. Eugene Siris serves as a director on that board for Westbury and you can read more on page 7. You'll read about the activities at the Willow Waterhole. You'll read about the Westbury Community Garden where dozens of Westbury residents volunteer. You'll read about a volunteer project being undertaken by Westbury High School students. And it doesn't end there... volunteers serve with so many other groups ....Southwest Houston 2000, Friends of Levitt Pavilion Houston, Brays Oaks Management District, the Company on Stage, Westbury CARE, our area schools, and religious organizations. The Mandell family, formerly of Westbury, brings us the Deck the Halls parade this month. The secret to the success of all these groups is the friendships and fun they produce!

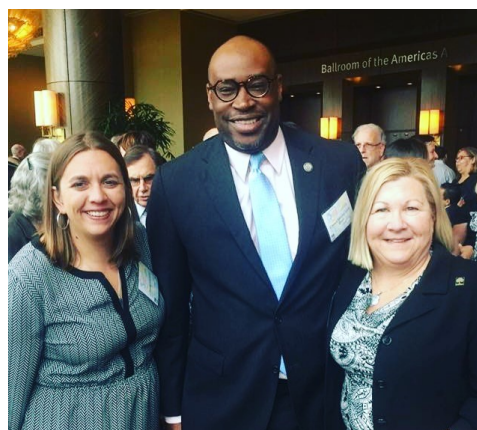
One of November's highlights was the Westbury Civic Club receiving the **Distinguished Neighborhood Award** from Mayor Turner at the Keep Houston Beautiful luncheon. Hundreds of hours of volunteer time by dozens and dozens of volunteers went into the many green projects in 2016. With seven miles of esplanades, four City parks, a seven acre community garden and 50 acres of HCFCO easements, there is always something needing attention. Watch for ways in 2017 that you, too, can join the green effort. Learn more about this on pg 6.



Westbury residents voted in substantial numbers in the November election, with as many as 50% in one precinct opting to take advantage of early voting. Our January issue will have the actual voting percentages as they were not yet available. I'd like to thank our hardworking precinct judges and poll workers.

Mark your calendars to attend the Deck the Halls parade, the Willow Waterhole Snow Hill, and/or a Company on Stage performance. For many Westbury residents, these events are already holiday traditions. The December Yard of the Month judging will focus on holiday decorations as our streets become merry and bright with holiday lights. Nominate your favorite yards by emailing our Yard of the Month head judge, Robert Montgomery, at [rmontgomery002@comcast.net](mailto:rmontgomery002@comcast.net).

Wishing you all of joys of the season!  
Look for me in the Deck the Halls parade!  
Becky Edmondson



Jennifer and Becky Edmondson with District K City CM Larry Green at the Keep Houston Beautiful Luncheon

## Westbury Civic Club Board Notes November 2016

- ⇒ CM at large # 4, Amanda Edwards, along with two of her staff members, attended to discuss Houston's General Plan and ask all of us to fill out the survey at [planhouston.org](http://planhouston.org).
- ⇒ The board approved a motion to investigate and proceed moving into a new and larger space in the same building.
- ⇒ Flood & Infrastructure - Working to ensure our areas get some of the \$30-40M in federal funds set aside as a result of the Memorial Day flooding
- ⇒ No WCC Board Meeting in December



**NEXT WCC Board  
Meeting**  
Wed., Jan. 18, 7PM-9PM  
Westbury Baptist

# Platou Community Center

11655 Chimney Rock

Hours: Mon-Thurs 12PM—8PM; Fri 11AM-7PM

Supervisor: 713-726-7107

# Meyer Neighborhood Library

5005 W. Bellfort

Phone: 832-393-1840 /  
www.houstonlibrary.org

## Holiday Social Potluck

December 7, 11AM—2PM

Open to all, everyone is invited. It is a pot luck lunch, so bring a dish to share! We are also collecting gifts for Toys for Tots. If you would like to participate, drop off an unwrapped toy to the Platou Center between Dec. 5-7. For more information or questions, please call 713-726-7107.

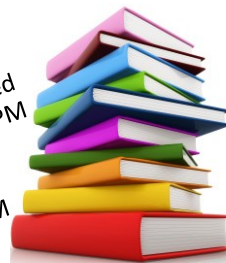
## Westbury Martial Arts & Fitness

Mon. & Weds. 6-7PM

Kids of all ages can learn martial arts, fitness & conditioning, confidence, and self-defense. Classes with WMA are a great way to become active in a fun and safe environment. Please visit westburymartialartsandfitness.com or call 832-475-1554 for more information.

## LIBRARY HOURS

Sunday & Monday - Closed  
Tues. & Weds. 10AM-6PM  
Thursday 12PM-8PM  
Friday - 1PM-5PM  
Saturday - 10AM -5PM



## WEEKLY EVENTS DECEMBER 2016

### Baby Playtime

Tuesdays, 10:30am – 11:15am

Come for creative and collaborative play! For children ages 0-18 months.

### Toddler Storytime

Wednesdays, 10:30am – 11:15am

Stories, songs, activities that will help develop toddler's social, motor, and literacy skills. Intended for ages 18-36 months.

### Preschool Playtime

Wednesdays, 1:30pm – 2:15pm

Creative, collaborative play experience that will help prepare your child for school readiness. Intended for ages 3-5 years.

### Kids Craft Time

Thursdays, 3:30pm

## Special Library Events on page 19

### STRETCHING EXERCISE CLASS

Mon., Wed., Fri. from 9-9:45AM

Improve your flexibility by joining this non-strenuous exercise class.

No registration required.



MsBEEHAVEN QUILTERS -Tues., 10AM - 2PM

GAMES—Wed., 10AM to 12PM

For more information, contact Wally at 713-729-9310

LINE DANCING Mondays @ 1PM

For more information, contact Platou Center, 713-726-7107

Ping Pong Leagues—Wednesday & Friday

Open adult ping pong will be on Fridays from 11AM to 2PM.

Open adult and teen play on Wed., from 6-8PM.

### TOPS: TAKE OFF POUNDS SENSIBLY

A Weight Loss Support Group, Tuesdays 5:45-7PM

Drop in to preview or call Dorothy at 713-723-4441 or Naomi at 713-988-2233

### Westbury Pool

CLOSED

UNTIL MAY

2017



10605 Mullins  
City of Houston Pool

# Dick n' Sons

## Floor Covering Center

6240 Bissonnet, Houston, Texas 77081

713.981.1900

www.dicknsons.com

Serving Westbury over 40 Years!



Fine Floor Coverings  
for Every Budget

Carpet, Cork, Laminate, Vinyl, Hardwood,  
Ceramic Tile & Countertops!

M-F 8-5 Thurs. 8-7 Sat. 10-4  
6 Months No Interest Financing

# What's Happening in Westbury

## Events/Meetings Calendar DECEMBER 2016

<b>Sun. 4</b>	<b>Snow Hill at Willow Waterhole</b> Bob Schwartz Gazebo, Dryad See page 21 for more information	<b>3-5PM</b>
<b>Wed. 7</b>	<b>Holiday Social Potuck</b> Platou Center See page 4 for more information	<b>11AM-2PM</b>
<b>Sat 10- Sun 11</b>	<b>HOLIDAY YARD OF THE MONTH JUDGING</b> 	
<b>Sat. 17</b>	<b>NO Audubon Society Bird Survey in December</b>	
<b>Sat. 17</b>	<b>Deck the Halls Parade</b> See page 1 for more information	<b>5PM</b>
<b>Mon. 19</b>	<b>NO Brays Bayou Association Meeting in December</b>	
<b>Wed 21</b>	<b>NO WAIC/Super Neighborhood #37 Meeting in December</b>	
<b>Wed. 21</b>	<b>No Westbury Civic Club Board Meeting in December</b>	
<b>Tues 27</b>	<b>NO SW PIP (HPD Positive Interaction Program) Meeting</b>	
<b>Dec. 21- 30</b>	<b>WCC Office Closed</b> Voicemails and emails will be checked.	

## Heavy & Recycling Trash Calendar

### December 2016

<b>Thurs 8</b>	Curbside Recycling All of Westbury	<i>NO GLASS</i>
<b>Thurs 8</b>	<b>Heavy Trash— JUNK WASTE ALL OF WESTBURY</b>	
<b>Thurs 22</b>	Curbside Recycling All of Westbury	<i>NO GLASS</i>

### January 2017

<b>Thurs 5</b>	Curbside Recycling All of Westbury	<i>NO GLASS</i>
<b>Thurs 12</b>	<b>Heavy Trash- TREE WASTE ONLY ALL OF WESTBURY</b>	
<b>Thurs 19</b>	Curbside Recycling All of Westbury	<i>NO GLASS</i>
<b>Thurs. FEB. 2</b>	Curbside Recycling All of Westbury	<i>NO GLASS</i>

### Important Trash & Recycling Info

- ♻️ Regular trash pickup is every Thursday. Recycling is every other Thursday. Heavy Trash is once a month, 2nd Thursday.
- ♻️ Trash cans need to be on curb by 7AM each Thursday
- ♻️ Trash cans must be removed by 10PM each Thursday
- ♻️ Trash cans must be placed at least 3 feet apart
- ♻️ Trash cans must be stored out of sight.
- ♻️ Yard waste **MUST** be in correct biodegradable bags
- ♻️ Heavy trash can be placed starting at 6PM the Friday before pick-up
- ♻️ **YARD WASTE** is not considered tree waste. It is collected on regular Thursday trash day
- ♻️ Call 311 for all trash questions and complaints
- ♻️ Nearby Trash Depositories and Recycling Centers: **SW Trash Depository/Recycling Ctr**  
**10785 SW Frwy / Hours: Wed.—Sun. 9AM to 6PM;**  
Accepts Junk Waste, Tree Waste & Recyclables.
- ♻️ **Environmental Service Center** - **11500 S. Post Oak**  
Hours: Tues/Wed 9AM-3PM; 2nd Sat 9AM-1PM.  
Accepts Hazardous Household & Electronic Waste.
- ♻️ Refer to [www.westburycrier.com](http://www.westburycrier.com) or [www.houstontx.gov](http://www.houstontx.gov) for more trash and recycling information



## WCC OFFICE HOLIDAY HOURS



**December 21– January 2:** WCC Office will be not be open during its normal hours. Please call before coming to the office to make sure someone is there.

Voicemail and email will be checked periodically.

Phone: 713-723-5437

Email: [Westburycc@sbcglobal.net](mailto:Westburycc@sbcglobal.net)

**Happy Holidays from the WCC Office!**

**Happy New Year!**

## Planning Calendar

HISD Winter Break - Dec. 19- Jan. 3  
SWHouston 2000 Breakfast—Jan. 10  
(Mayor Turner will be the speaker)

[WWW.WESTBURYCRIER.COM](http://WWW.WESTBURYCRIER.COM)

### City of Houston Heavy Trash Schedule

January	Tree Waste	February	Junk Waste
---------	------------	----------	------------

# 2016 Distinguished Neighborhood Award

## Major Awards for TWO Westbury Beautification Projects

The Westbury Super Neighborhood took home two major awards at the 36<sup>th</sup> annual Mayor's Outstanding Proud Partner awards luncheon program held in November 2016 by Keep Houston Beautiful. Many groups and organizations are nominated each year for consideration, so it is an honor for TWO projects in our community to be awarded major awards this year. Jim McIngvale (Mattress Mack) of Gallery Furniture was honored as the Outstanding Proud Partner for his years of service to the city.



The Westbury Civic Club won the **Distinguished Neighborhood Award** for the projects related to our celebration of the 60<sup>th</sup> Anniversary of the WCC. These projects included: work in all of our city parks, tree planting on our esplanades, and refurbishing our historical concrete street markers. See the green column to the right for details of all our projects.

The Willow Waterhole Greenspace Conservancy won a **Proud Partner Award** for its work on the Willow Waterhole at the "Bud Light Gives Back to Houston Day" last October.

To celebrate this our 60<sup>th</sup> year of service to the Westbury community, the Westbury Civic Club (WCC) sponsored projects during the year to beautify the neighborhood while celebrating our six decades of beautification. Over the past 60 years the WCC has planted thousands of trees; given away thousands of trees; worked on our 7 miles of esplanades; worked on our parks; started a community garden and hosted many cleanups. For our 60th Anniversary we wanted to continue this work and honor our history.

**Parks:** In October we helped beautify the Dryad entrance to our newest Greenspace, the **Willow Waterhole Greenspace** by participating in the Bud Light Gives Back to Houston project. Volunteers from the WCC worked on the design with KHB and planted a total of 60 species in this area....roses, jasmine, oak trees, hollies and more. We hosted Keep Westbury Parks Beautiful Day in April for our three other area parks. Volunteers planted 165 plants in the **Westbury Park** butterfly garden which was created in 2015; beds were mulched and the park de-littered. In **Hager park** we hosted a cleanup and mulched the trees planted in the past several years. In **Chimney Rock Park** volunteers put in a much needed sidewalk to the employee entrance. They also put in new wood trim for the raised garden at the park sign; filled holes in some grassy areas near the courts and planted three pine trees.

**Trees:** The WCC partnered with District K and the Brays Oaks Management District to plant 60 trees on our esplanades on Chimney Rock, W. Bellfort and Hillcroft. The first planting took place on Arbor Day with 30 trees donated by Trees for Houston. The next 30 trees were from the Westbury Community Garden tree farm and planted by a Scout for his Eagle project.

**Historical restoration:** Westbury streets were originally marked with concrete posts bearing their names. After 60 years the few remaining signs were neglected and in bad shape. For his Eagle project a Scout identified 12 signs and restored them by cleaning them and resetting them upright in new concrete. The WCC paid to paint and seal them.

**Cleanups:** Many of our green city street signs had become grimy and mildewed and almost unreadable. The WCC sponsored two contests for residents to clean their street signs; submit their before and after photos to be entered into a drawing for prizes.

**Esplanades:** Thanks to a matching grant from the City of Houston, the WCC was able to add irrigation to the sign marker at the corner of Willowbend and Hillcroft and adopt that esplanade. It has never looked more beautiful!



Westbury Amazing Volunteers and City Reps

**Plumbco**  
**Plumbing**  
**713-725-5025**  
MPL#17021  
**your neighborhood plumber**

**For all your  
Plumbing  
Installations  
and Repairs**

**[www.plumbcohouston.com](http://www.plumbcohouston.com)**

# Neighborhoods to Trails—Southwest

## Neighborhood Trails Group Receives Support from the National Park Service

The National Park Service (NPS) announced that Neighborhoods to Trails – Southwest (NTT-SW) has been selected to receive assistance from the NPS Rivers, Trails, and Conservation Assistance program. NPS staff will assist NTT-SW with their efforts to develop new trails and linear parks in southwest Houston.

Neighborhoods to Trails—Southwest is dedicated to developing hike and bike trails and to providing safe, economical, and environmentally friendly transportation from the Brays Bayou trail system to destinations in Southwest Houston. The organization is a partnership of seven southwest Houston neighborhoods, along with a number of community partners. Participating neighborhoods include Westbury, Meyerland, Willow Meadows, Maplewood South North, Braeburn Valley West, Maplewood West and Marilyn Estates.

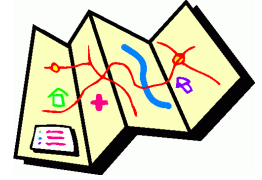
The NPS Rivers, Trails, and Conservation Assistance program helps communities design trails and parks, conserve and improve access to open space, protect special places, and create recreational opportunities through locally led partnerships. This assistance will include organizational development, public engagement, project development, and fundraising assistance. The project is one of four new projects accepted by the NPS in Texas this year.

The NPS is proud to support the visions of community organizations and help improve access to open space in and around southwest Houston. It believes in public and private partners working

together to align state, federal, and local resources that achieve long-term enhancements to quality of life.

On November 17, Justin Bates of the National Park Service kicked off this support with members from the neighborhoods and other community partners coming together for an interesting meeting. Each neighborhood in the SW area has identified future trails that they would like to see developed.

Westbury has been working on future trails within its boundaries for several years. Al Potvin and Kevin O'Brien have been leading, clearing, and mowing demonstration trails. The Trail Committee is a branch of the WCC Greenspace Committee. WCC Board Member Eugene Sirls is the WCC representative to NTT-SW meetings. The January issue of the Crier will have more information on future possible Westbury trails.



Members of the Neighborhoods to Trails—Southwest met on Nov. 17 with Justin Bates from the NPS



Houston Area Realtors (HAR)  
Top 20 Under 40

Texas Monthly 5 Star Professional  
5 years in a row

5 Star Client Experience Rating  
★★★★★

## DON'T MAKE A MOVE WITHOUT SUSAN BROCK

**STOP.** The first thing to do if you're thinking of buying, selling or leasing is call **Susan Brock**. Look no further, Susan is a neighbor *and* a neighborhood expert that generates an average sale price at 99% asking price in an average of just 36 days on the market.

Susan sells more homes in Westbury than anywhere else in town. With more than 15 years experience as a licensed Broker and Realtor<sup>®</sup> you might say she's been around the block.

**BROCK** and **FOSTER**  
Real Estate

www.BrockandFoster.com 713.922.0877

# Waste Management & Recycling

## Waste Management Open House

The Waste Management facility on Gasmer hosted an Open House in November. WCC Board Members Becky Edmondson, Cindy Chapman, and Jennifer Edmondson visited the Single Stream Recycling Center located on Gasmer just before S. Post Oak near the Willow Waterhole.

The tour started with a visit to the recycling education center that artist Dan Phillips and the Phoenix Commotion created using recycled materials. The room is an inspiration with murals on the wall, paper-mache on the floor, and a ceiling covered with CDs and record albums. Tours were then given of the recycling facility itself. It was an eye opening experience as we watched so many **WRONG** things travel down the conveyor belt as the hard working WM employees tried to pull them out. In just a few minutes we saw a garden hose, a purse, a



pair of high heels, a long piece of re-bar, and a pool float, just to name a few.

One of the large loading rooms was full of recycling material waiting to be sent up the conveyor belt for sorting. It was full because just the day before, work had to stop for almost 8 hours as a piece of re-bar jammed the machinery.

**Recycle Often, Recycle Right** is the new tag line. How to do it right? Only put paper, flattened cardboard, food cans and cartons, plastic bottles & containers. That's it.

If you want to learn more about recycling and how it works, see the next page for a typical single-stream recycling facility work flow.



## Holiday Do NOT Recycle List

Here are some of the holiday items that should NOT be placed in your recycle bins. Either they are not processed at our city recycle centers, or they wrap around the machinery and create processing problems.

⇒ **No Holiday lights**



⇒ **No gift wrapping paper, ribbons, trim, and bows**

⇒ **No Yard inflatables**



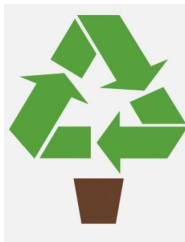
⇒ **No Clothing (including Ugly holiday sweaters)**

⇒ **No Batteries. (Note. Put alkaline batteries in the trash. Take rechargeable batteries to the local Environmental Service Centers at either S. Post Oak or the one on Westpark)**

Visit [rorr.com](http://rorr.com) or follow Waste Management on Twitter @WasteManagement to learn more about what should and should not go in your recycle bin.

## CHRISTMAS TREE RECYCLING

The City Of Houston will pick up Christmas trees from the curb in January on Heavy Trash Tree Waste Day, January 12.

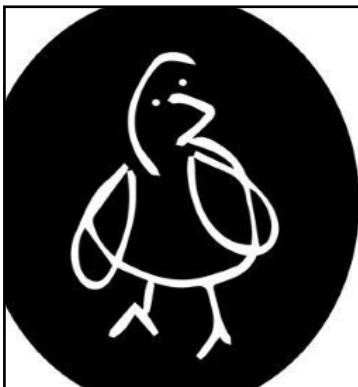


The trees must have all decorations, ornaments, tinsel, lights and stands removed. Flocked trees cannot be recycled. Christmas trees may also be dropped off at the Westpark facility as well as the Southwest depository.



**RECYCLE OFTEN.  
RECYCLE RIGHT.**

*Did you know that Waste Management is NOT a City of Houston department but a Company? Waste Management (WM) has a contract with the City of Houston for recycling. WM is headquartered in Houston & operates throughout the US and beyond.*



Are you looking for a reliable dog walker or pet sitter for while you are at work or on vacation??

**Boon Pet Care**  
is here for you!

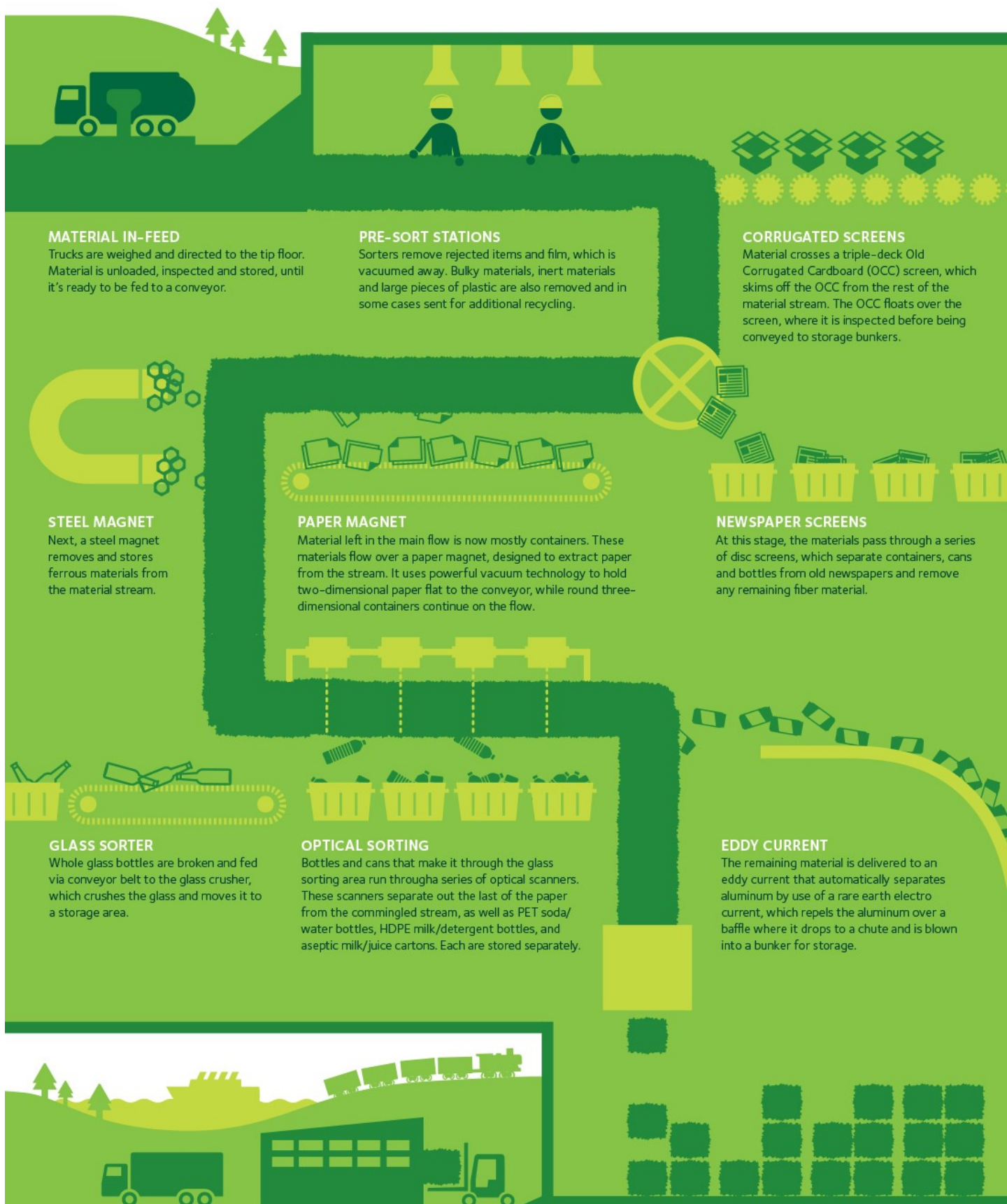
As Westbury residents, we are committed to taking the very best care of our neighbors' loved ones.

Check out our website for pricing and details: [www.booncare.com](http://www.booncare.com)

Or contact us today: [booncare@gmail.com](mailto:booncare@gmail.com) or 713.936.2623



## A TYPICAL SINGLE-STREAM RECYCLING FACILITY



### MATERIAL IN-FEED

Trucks are weighed and directed to the tip floor. Material is unloaded, inspected and stored, until it's ready to be fed to a conveyor.

### PRE-SORT STATIONS

Sorters remove rejected items and film, which is vacuumed away. Bulky materials, inert materials and large pieces of plastic are also removed and in some cases sent for additional recycling.

### CORRUGATED SCREENS

Material crosses a triple-deck Old Corrugated Cardboard (OCC) screen, which skims off the OCC from the rest of the material stream. The OCC floats over the screen, where it is inspected before being conveyed to storage bunkers.

### STEEL MAGNET

Next, a steel magnet removes and stores ferrous materials from the material stream.

### PAPER MAGNET

Material left in the main flow is now mostly containers. These materials flow over a paper magnet, designed to extract paper from the stream. It uses powerful vacuum technology to hold two-dimensional paper flat to the conveyor, while round three-dimensional containers continue on the flow.

### NEWSPAPER SCREENS

At this stage, the materials pass through a series of disc screens, which separate containers, cans and bottles from old newspapers and remove any remaining fiber material.

### GLASS SORTER

Whole glass bottles are broken and fed via conveyor belt to the glass crusher, which crushes the glass and moves it to a storage area.

### OPTICAL SORTING

Bottles and cans that make it through the glass sorting area run through a series of optical scanners. These scanners separate out the last of the paper from the commingled stream, as well as PET soda/water bottles, HDPE milk/detergent bottles, and aseptic milk/juice cartons. Each are stored separately.

### EDDY CURRENT

The remaining material is delivered to an eddy current that automatically separates aluminum by use of a rare earth electro current, which repels the aluminum over a baffle where it drops to a chute and is blown into a bunker for storage.

### SHIPPING

Bales are shipped via truck, rail or ship to end users around the world, where they are used as feedstock for new products.

### FINISHED PRODUCT

Forklifts move the bales to a finished product storage area where they are checked for quality.

### BALING

Interior storage bunkers accumulate large quantities of each separated material stream, which are subsequently processed in ultra-high-efficiency equipment for compaction into "bales" for shipment to end-use markets.

# Westbury News

## De-Silting Work on Westbury Drainage Ditches

In May 2016, the Westbury Civic Club (WCC) notified the Harris County Flood Control District (HCFC) that not all of the drainage ditches in Westbury had been de-silted during the work done by HCFC in 2015. The Westbury Civic Club was very concerned because the area omitted has seen flood water overflowing the drainage ditch four times recently (in April 2013, Memorial Day 2015, Halloween 2015, and Tax Day 2016).

WCC President Becky Edmondson wrote an email to HCFC and requested that HCFC schedule an EMERGENCY de-silting of the channel that had been omitted in 2015. *"It has now come to my attention that D140-05-01; which is the southern extension of the D140-05-02 was not touched. This area has had extensive flooding as the water flows out of the D140-05-02 down Lattimer flooding the homes in April 2013, Memorial Day 2015; Halloween 2015 and Tax day 2016. I would like to ask for an emergency de-silting on this channel."*

We are pleased to announce that the District's contractor, Complete Concrete, was scheduled to mobilize and do the requested de-silting work in November 2016. The project is approximately 1263 linear feet and consists of a channel de-silt from D140-05-00 (Willow Waterhole Bayou) to south of W. Airport. It will include a couple of erosion repairs: one at Latimer Drive and one just downstream, both on the east bank of the channel.

We thank HCFC and the nearby residents who reported the problem with this drainage ditch.

## SWHouston2000 Breakfast : D.O.N. is S.U.P.E.R.

The nonprofit advocacy organization, SWHouston2000, holds a bi-monthly breakfast and invites speakers of interest for this area of Houston. The November speaker was the director of the Department of Neighborhoods (DoN), TaKasha Francis. She was appointed by Mayor Turner and has been working to make this department the best that it can be. Their new motto is "the Department of Neighborhoods is SUPER": Service, United, Professional, Excellence, and Responsive are the key words. She stressed to continue reporting problems to 311. They have just 45 inspectors for the whole city, but in just 6 months, they have improved their response time by 17%. Susan Monaghan, the principal for Westbury High School, accepted a \$500 check from SWHouston2000 to help with testing costs, as did Dan De Leon, the principal of Sharpstown High School.

The Westbury Civic Club purchases a table at the bi-monthly SWHouston2000 breakfasts. The WCC also sends a representative, Cindy Chapman, to their monthly board meetings.



SWHouston 2000 November Breakfast

TAKE THE FIRST STEP  
IN ELIMINATING  
**JOINT  
PAIN**



## Contact a Memorial Hermann Joint Center. And start living pain free.

Staying active is key to staying healthy. That's why Joint Center specialists use the most advanced treatments to get you moving again. From new prescription options, to minimally invasive surgical interventions, our affiliated body of experts is ready to help you find the best path to the life you want to live.

Call 713.272.1888 or visit [jointpain.memorialhermann.org](http://jointpain.memorialhermann.org) for more information or to make an appointment.

MEMORIAL  
HERMANN  
Joint Center

ADVANCING HEALTH

# Willow Waterhole News

## In Memoriam: Bob Marshall

Bob Marshall, along with Bob Parrott, Russell Schnexnyder, and Bob Schwartz founded the Brays Bayou Association (BBA) in 1983 after two back-to-back devastating flood events in the Brays Bayou watershed. The Brays Bayou Association was primarily responsible for obtaining the half-billion dollar funding for the Project Brays Flood Control project currently underway.

In 1982, Bob started his next career after retiring working 30 years as the Security Manager and Civic Association General Manager for the Meyerland community. Bob served over 30 years on the Harris County Flood Control Task Force and participated through last month. Bob loved volunteering. He was President, VP and Player Agent of Meyerland Little League. For 25 years Bob was Head Usher at St. Thomas More Catholic Church, where he was still a Parishioner. Bob was Precinct 281 Election Judge for over 40 years and a Life Member of the Republican National Committee.

## Willow Waterhole Wins Award

Bill Burhans, the Conservation Director of the Willow Waterhole Greenspace Conservancy, accepted the Proud Partner award from Mayor Turner for the work at the Willow Waterhole during the Bud Light Gives Back to Houston day.

“Bud Light Gives Back to Houston” at the Willow Waterhole was a wonderfully successful event. Board members of the Willow Waterhole Greenspace Conservancy supervised several large workday projects. Bill Burhans and Howard Sacks oversaw beautification projects. A team cleaned near the Dryad gate entrance, and then planted several large trees and more than 100 plants to make that entrance more attractive and inviting. A crew mulched the Rafferty Memorial near Ricecrest. Others trimmed trees and handled a large scale trail repair.

In addition to this day, Bill Burhans handles the scheduling and details for all the work days at the Willow Waterhole and all the Eagle Scout projects. Bill is a member of the Westbury “green team” and is responsible for the planting of hundreds of trees in Westbury including the beautiful palms at the Meyer library.

## A big THANK YOU to Bill Burhans for his volunteer work!



Sunset at the Westbury Little League one evening in November



**MELTON'S HOME IMPROVEMENT**

**CRAIG MELTON**

713-393-9704  
CRAIG.MELTON@ATT.NET

20+ YEARS EXPERIENCE  
ACCEPT MOST MAJOR CREDIT CARDS

Westbury Resident

PAINTING - FLOORING - KITCHENS - BATHROOMS - SHEETROCK  
ROOFING - SIDING - CARPENTRY - PRESSURE WASHING

**PERUVIAN RESTAURANT**



- Ceviche
- Rotisserie Chicken
- Papa Rellena
- Lomo Saltado
- Bistec a lo Pobre
- Jales de Posado
- Saltado de Camarones
- Empanadas

**Presentando este Cupón**

**01 Side Order**

**GRATIS**



Ceviche



Lomo Saltado



Pollo a la Brasa

Dirección: 10804 S Post Oak Rd #375, Houston, TX 77035  
Teléfono: (281) 888-3931

**Water Heaters:**  
Regular & Tankless

Disposals

Water Lines

Gas Lines

Drain Cleaning

Under Slab Repairs

Re-route kitchen & laundry pipes

# ASTRO PLUMBING

**Full Service Plumbing and Repair Specialist**

## 713-256-0017

**★ JOHNNY LEWIS ★**

**WESTBURY RESIDENT**

**New Sewer Lines**

Hydrostatic Testing

Remodeling & Repairs

Sinks

Faucets

New Drains under Bathroom

M16312 ★ Since 1985

★ Senior Discounts

★ All Major Credit Cards

★ Fully Insured

## WHS Awarded Grant

### Westbury High School Awarded Leadership Grant by Cheniere Energy

The Student Council at Westbury High School has been awarded a Youth Leadership Enrichment and Development (LEAD) grant of \$20,000 from Cheniere Energy. Cheniere launched the LEAD Program in Louisiana and Texas in 2014. It is designed to engage the next generation of leaders in community service by empowering students to make project decisions, coordinate work, and allocate budgets. The Student Council wanted to work on a project near the school that would benefit the environment, students, and the surrounding community. They have chosen a project to build a pier at the Willow Waterhole Greenway to be used for fishing, kayak/canoe launching, and environmental sampling. The grant requires the project to be completed by April 2017. Aaron Harris, WHS teacher and advisor for the LEAD project, said, "The students are very excited about receiving this grant and we have already had meetings with the Willow Waterhole Greenspace Conservancy and Cheniere to begin planning. It will definitely fit the criteria for the LEAD Program by engaging the students in decision making, work coordination, and budgeting. I also think they will have a lot of fun and be proud of the finished product."

The Willow Waterhole Greenspace Conservancy, the Harris County Flood Control District, and the Houston Parks and Recreation Department included a pier in the master plan for the Greenway and have recently agreed upon a location. A site on the northwest section of Westbury Lake has been selected, only 1/4 of a mile from WHS. Per Ralph Rieger, President of WWGC, "With the news of the generous grant from Cheniere and WHS, the detailed design process for the pier can now start. The preliminary construction cost estimate is \$40,000. WWGC had begun fundraising and received a \$7,500 grant from the Southwest Rotary Club in August and a \$2,500 grant from the Westbury Area Improvement Corporation in November. With the addition of the

\$20,000 WHS LEAD grant and the expectation that we can obtain pro-bono services for the design, volunteer labor for construction of the deck, all we need is the community's help in raising \$10,000 more!"

All those who wish to help on this project can do so by calling the WWGC at (713) 729-1122, donating online at [www.willowwaterhole.org](http://www.willowwaterhole.org) or mailing a donation to the address below. WWGC is a tax deductible 501(c)(3) organization.

Willow Waterhole Greenspace Conservancy  
11415 Chimney Rock Rd  
Houston, TX 77035

Please note "Pier Project" on your check.



Approximate location of the pier at the Willow Waterhole

## St. Thomas More Parish School Early Childhood Programs



- ◆ Accredited Preschool for 3 & 4 year olds
- ◆ Monday/Wednesday/Friday & Monday-Friday Classes
  - ◆ Full Day & Half Day Options
  - ◆ Before & After School Available
- ◆ 2016-2017 Registration NOW OPEN



***Every child is unique and a valuable individual.***

***Let us provide the beginnings of a Catholic education with LOVE.***

***LOVE provides security. LOVE gives a quality education. LOVE is a glimpse of God.***

5927 WIGTON DR.



HOUSTON, TX 77096



713-729-9062



[WWW.STTHOMASMORE-SCHOOL.ORG](http://WWW.STTHOMASMORE-SCHOOL.ORG)

## School News

### New School Sidewalk

The City of Houston Department of Public Works and Engineering (PWE) announced the award of a new contract to Tikon Group, Inc. for the construction of 2.5 miles of sidewalk improvements. The work will begin in early February.



Our area will be the recipient of a new sidewalk on Glenfield Court, between Willowbend and Cheena, which will serve both Westbury Christian School and St. Thomas More School. This new sidewalk has been a longstanding request on the border between District C and K, as no sidewalk exists in this spot.

Providing children with safe routes to schools remains a top priority for the City. This project will provide new sidewalks to address community needs around five area schools.

While residential sidewalk repairs remain the homeowner's responsibility, through the PWE Safe Sidewalk Program, residents may request the repair and improvement of sidewalks to create safe routes to schools or access for the disabled. For more information, visit: [www.publicworks.houstontx.gov/sidewalk-programs](http://www.publicworks.houstontx.gov/sidewalk-programs)

### Mike Lunceford NOT Resigning

Last month we noted that HISD Trustee Mike Lunceford had announced plans to resign from the HISD board at the end of 2016 due to his work. As an update, Trustee Lunceford has now decided to complete the end of his term on the HISD board, which ends in 2017. He represents some Westbury residences and also many Westbury area students who attend the nearby Meyerland School for the Performing and Visual Arts (the former Johnston Middle School).



### Parker Elementary Construction

The project advisory team for Parker Elementary met in November. Currently the projected completion date is August 29, 2017. School is scheduled to begin August 28 so this information was not well received. HISD has been asked to work with the contractor on a better completion date. We will keep you informed.

### Do Not Blow Your Leaves into the Storm Drains!

As you have no doubt witnessed, Houston has occasional street flooding. Streets in Houston are designed to be channels for the rising water to gather into and then allow the water to flow into the storm drains. The rain water drains away and eventually ends up in Galveston Bay. Houston homes are set on higher ground, ideally, to keep them from flooding.

If you, or your hired lawn crew, blow leaves and debris into the storm drains, then the drain lines will be obstructed, resulting in slow draining and potential flooding. Though you might think your area is safe, there is a cumulative effect which can affect all of us since the drains are connected. Please bag your excess leaves or compost them on property.



**HoustonLandscaping**  
Since 1989

**Residential & Commercial**

- Landscape Design
- Garden Design
- Sprinklers & Drainage
- Hardscape
- Patios & Outdoors
- Curb appeal

**(713) 701-9193**

**[Houstoncitylandscaping.com](http://Houstoncitylandscaping.com)**



**Cracks? Sloping?  
Concerned about  
your foundation?**

- High End Quality Work at Very Competitive Pricing
- Very Detailed and Comprehensive Evaluations
- 0% Interest for 12 Month Financing (with your good credit)
- Highest Ratings on Search Engines and Contractor Sites
- Westbury resident for 8 years
- A+ Rating With BBB

Call me today for a **free** evaluation of your home!  
(281) 435-6065 - direct  
[lonnie.parker@permapier.com](mailto:lonnie.parker@permapier.com)



**Lonnie Parker**  
Senior Foundation Analyst

# Crime & Security

## Crime Statistics for Westbury Super Neighborhood 37\*

30 days November 15, 2016

	Single-Family Home	Apt/Condo	Commercial Property	Public Areas	Totals
Burglary	9	2	3	1	15
Theft	6	2	7	5	20
Auto Theft	2	7	0	0	9
Robbery	1	0	2	1	4
Assault	0	1	1	0	2
Rape	0	0	0	0	0
Murder	0	0	0	0	0
<b>TOTAL</b>	<b>18</b>	<b>12</b>	<b>13</b>	<b>7</b>	<b>50</b>

\*Area bounded by: S. Post Oak, US 90/S. Main, utility easement north of Willowbend and drainage bayou, west of Braewick

### Single Family Residential Crime

**Locations by block number, not exact address. Stats for 30 days preceding Nov. 15, 2016**

Block #	Street	Crime
12300	Atwell	Theft
6000	Cerritos	Theft
12100	Chimney Rock	Burglary
5400	Creekbend	Burglary
5800	Dryad	Auto Theft
11000	Endicott	Theft
5800	Ettrick	Burglary
5600	Greencraig	Burglary
11500	Hillcroft	Theft
5600	Ludington	Burglary
5800	Ludington	Theft
5800	Ludington	Burglary
10800	McClearn	Robbery
5900	W. Airport	Burglary
5200	W. Bellfort	Theft
5500	W. Bellfort	Burglary
5800	W. Bellfort	Burglary
5900	W. Bellfort	Auto Theft

## Don't forget Vacation Watch!

For residents who pay the WAP patrol dues, a special Vacation Watch may be requested from Pct 5. The form is available online. Sign up at [www.constablepct5.com/vacation-watch/](http://www.constablepct5.com/vacation-watch/) If you want to request a Vacation Watch, but do not have access to a computer or internet, please call 281-463-6666 for assistance.



Westbury Area Patrol 281-463-6666  
Westbury HPD Storefront 832-394-7520  
HPD Non-Emergency 713-884-3131

## Holiday Safety Tips

**Holiday Travel:** For those who participate in the WAP Patrol, please make sure you take advantage of their vacation watches. You may call it in directly to Pct. 5 at 281-463-6666 or go to their website and fill out the form electronically.



**Packages:** For those who are having packages delivered to their home, make sure someone is there to accept the packages or consider having it delivered to an alternate location such as work or directly to the UPS store. Several porch package thefts have occurred in Westbury in the past month. As holidays approach, the thieves will be looking for easy targets. Do not be one!

**Shopping:** Be aware of your surroundings. Be sure to park in well lit areas. Do not carry large amounts of cash. Do not wear large amounts of expensive jewelry. Consider shopping during the day or with a friend. Be aware of strangers approaching you with questions to distract you.

**Visible Presents/Gifts:** Large displays of presents/gifts should not be visible through your front windows.

**Scams/Suspicious Person(s):** One common scam in our area involves someone coming to your door asking about trimming your trees. They get you to take them out back while someone else, unknown to you, is stealing items from your home.

Call WAP at 281-463-6666 for any suspicious vehicles or people. One way criminals screen the neighborhood and homes is by going door to door with fake solicitations or by knocking to see if the homeowner is home. Do not open the door to strangers; however, let them know that someone is home.

## Definitions of Crime Types

**Burglary** - (breaking and entering) an unlawful entry into a building for the purposes of committing an offence. Usually that offence is theft.

**Theft** - the act of stealing; the wrongful taking and carrying away of the personal goods or property of another; larceny. Examples include ransacking unlocked cars, taking property out of open garage doors, taking a purse off a front seat of an unlocked car, taking a mower out of the back of a pickup truck.

**Auto Theft** - the act of stealing your automobile or truck

**Robbery** - taking or attempting to take anything of value by force or by putting the victim in fear.

**Aggravated Assault** - an attempt to cause serious bodily injury purposely.

**Rape** - unlawful sexual activity carried out against the will of a female or person under age, or incapable of consent.

**Murder** - the unlawful premeditated killing of one human being by another.

Thank you to everyone who contributed to the Westbury Area Patrol this year. We need everyone to support this great program. The 2017 dues form is located on page 17. Send in your dues today. The amount requested is \$285 for the Constables, but any amount will help. Thank you!

# Halloween in Westbury

## Airbag Recall

Representatives of the group [airbagrecall.com](http://airbagrecall.com) came to the Westbury Super Neighborhood meeting to help spread the word about a massive airbag recall covering many millions of vehicles in the U.S., involving about two dozen brands of vehicles. According to Consumer Reports magazine, eleven fatalities and more than 100 injuries have been linked to the Takata airbags in the recall, because the housing covers for the airbag “inflatos” sometimes explode and spray metal shrapnel when the airbag is activated. The risk of an inflator having a problem increases with persistent high humidity, high temperature, and the age of the airbag. As a result, Texas and Houston are included in Priority Zone A in the recall, as determined by the National Highway Traffic Safety Administration (NHTSA).

This group has a list of names and addresses of people whose vehicles are affected and will be going door to door to let residents know. In the meantime, to see if your car is on the recall list, go to [airbagrecall.org](https://airbagrecall.org) which will redirect you to <https://vinrcl.safercar.gov/vin/>. Enter your car’s VIN number (Vehicle Identification number) to find out.

### WHAT IS A VIN NUMBER AND WHERE DO I FIND IT?

Your VIN is the unique identification number for your vehicle and contains 17 alphanumeric characters. It may be found on your state vehicle registration, vehicle insurance, or on the vehicle itself – on the driver’s side dashboard at the bottom of the windshield or on the driver’s side doorjamb. Your VIN will not include the letter “i” or the letter “o”, but may include the number “1” or the number “0.”

## Halloween Events in Westbury



Westbury 1 Annual Halloween Parade was a big hit!



Westbury residents Paige & Greer Wermuth and Jennifer & Connor Edmondson enjoyed the Westbury High School Haunted House



Halloween Parade, Westbury 1



Trick or Treating in Westbury 2

## Vonnie Cobb Realtors, Inc.



*Your Neighborhood Realtor for 40 Years!*

Family owned and operated. Pictured Vonnie Cobb and Shannon Cobb.

Call us today for your **FREE Market Analysis!**  
**713.664.1818**



*Professionalism with a Personal Touch*

[www.VonnieCobbRealtors.com](http://www.VonnieCobbRealtors.com) • 4842 Beechnut • Houston, Texas 77096

## RALPH RIEGER, CPA

*We believe in service above Self!*

Giving our clients peace of mind with sound tax planning and financial advice, effectively representing them in dealing with the tax authorities, and timely, tender, loving care in preparing their tax returns. Helping Texas business owners make their dreams come true by helping them create extraordinary businesses.



11415 Chimney Rock [rieger@riegercpa.com](mailto:rieger@riegercpa.com) 713-729-1122

Commercial ♦ Residential ♦ Auto Glass

## DISTINCTIVE GLASS

Phone: (713)981-0200  
Fax: (713)981-4193  
Email: [dist@clear.net](mailto:dist@clear.net)

9541 Town Park Dr.  
Houston, TX 77036  
[www.distinctiveglassonline.com](http://www.distinctiveglassonline.com)

# Westbury Area News

## What Issues should the City Focus on Next Year?

The City of Houston is giving Houstonians a chance to tell them where they would like to see money spent. In 2015, Houston's City Council took the groundbreaking step of adopting the city's first general plan, Plan Houston. The plan describes a vision and goals for our community and identifies twelve core strategies that represent the City's approach for achieving the vision.

The City of Houston is now actively working towards achieving the community goals laid out in Plan Houston. The next step is to understand the community's interests so that policy makers can consider them as they develop City priorities for the next budget year. The City's next fiscal year begins July 1, 2017.

Your input, coupled with Plan Houston's strategic guidance, ensures that the City will use its limited resources in the most effective means possible to improve our community. You can share your thoughts on what the City should be focusing on by responding to a brief survey. It is a quick survey of three questions and can be found at [planhouston.org](http://planhouston.org).



## Company on Stage presents THE VELVETEEN RABBIT

**December 3 - 17, 2016**

Story by Margery Williams, adapted for the stage by Thomas Olson. A boy receives a stuffed rabbit as a Christmas gift and comes to love him. When the boy becomes sick, the rabbit gives him love and makes the boy well. In return for his good deed, a fairy grants the Velveteen Rabbit life. This moving story has been beloved by countless children and adults for close to 100 years. This production is appropriate for all ages. Performances at 11AM and 1:30PM on Saturdays at St. John's Presbyterian Church.



## Westbury Meet & Eat

Come out to Teotihuacan Mexican Restaurant at 6579 W. Bellfort every 1st Thursday of the month to meet Westbury residents. This event is open to anyone who lives in Westbury.  
**December Meet & Eat: Thurs., Dec. 1 @ 6PM**

## Links for Lost & Found Pets in Westbury

- Nextdoor Westbury - [www.nextdoor.com](http://www.nextdoor.com)
- Westbury Lost and Found Pets Facebook - <https://www.facebook.com/westburyhoustontexas?ref=nl>
- CARE- Contact at [westburycare@gmail.com](mailto:westburycare@gmail.com) or at [www.westburycare.com](http://www.westburycare.com), Compassionate Animal Rescue Efforts is located in Westbury.

# Fiscally Fit.

Sports Physicals start at  
**\$35**

713.691.6493 [nextlevelurgentcare.com](http://nextlevelurgentcare.com)  
Open 9am-9pm, 7 days a week • 9 Convenient Locations

## Come on get Appy!

New Next Level mobile app available now!

- Get in line online!
- Avoid the waiting room altogether
- We'll text you when your exam room is ready
- Consult with on-call nurse
- Share app with family & friends



**next level**  
URGENT CARE





# 2017 Dues/Assessments

## ATTENTION: PARKWEST 1&2

Homes purchased in Parkwest 1 after Jan. 1, 1993 and Parkwest 2 after Jan 1, 1994 have mandatory assessments.

**The amount of the 2017 Mandatory Assessments is \$233.50. The 2017 Assessments are due by February 1, 2017.**

If you have any questions or did not get your invoice, please contact the WCC office at 713-723-5437 or email westburycc@sbcglobal.net.

**Mission of the WCC**  
*The purposes of the Westbury Civic Club, Inc. (the "Club") are to improve the appearance of the Westbury area and promote the civic, cultural educational, health, and general welfare of the residents of the Westbury and Parkwest subdivisions in Harris County, Texas (collectively, the "Community").*

## Why Should I Pay My Dues? What are the Benefits?

- Protects your investment in your home by keeping Westbury a strong and vibrant neighborhood.
- Keeps the doors of the Civic Club office open and staffed.
- Protects your home and family with the Westbury Area Patrol through Constable Precinct 5.
- Improves the looks of our esplanades, parks, and green spaces.
- Advocates for City services and infrastructure improvements
- Hosts two White Elephant Community Garage Sale events each year
- Organizes community get togethers such as Coffee with Constables and National Night Out

## Why do my dues go to Dallas? Is this correct?

Yes, this is correct! We have you mail your payments directly to our bank's processing center. This allows your payments to be processed immediately.

Please send this form in with your payment

## 2017 Westbury Civic Club Dues

By filling out this form, you are giving the WCC permission to send you communications. We DO not sell your information or give it out to other entities.

Name(s) \_\_\_\_\_  
 Address \_\_\_\_\_  
 Home Phone \_\_\_\_\_ Work \_\_\_\_\_ Cell \_\_\_\_\_  
 E-mail \_\_\_\_\_

**Make checks payable to:  
 Westbury Civic Club, Inc.**

**Mail to:  
 P.O. Box 975182  
 Dallas, TX 75397-5182**

**Online payment:  
 paypal.com—Send Money to  
 westburycc@sbcglobal.net  
 Make sure to include your  
 address or account number**

### Want to send your support in multiple payments? You may choose any amount to pay in any increment throughout the year.

Here are a few examples:  
 2 payments of \$167.50 is \$335/yr  
 3 payments of \$111.67 is \$335/yr  
 4 payments of \$83.75 is \$335/yr  
 5 payments of \$67 is \$335/yr  
 12 payments of \$28 is \$336/yr

Westbury Civic Club Dues*	\$50	\$
Westbury Area Patrol	\$285	\$
<b>Subtotal</b>	<b>\$335</b>	\$
<b>Additional Contributions:</b>		
Westbury Civic Club		\$
Westbury Area Patrol (WAP)		\$
<b>Total</b>		\$

\*The Westbury Civic Club Dues encompasses all operations, programs, and services including greenspace, of the Westbury Civic Club, except patrol services.

Thank you for supporting the Westbury Civic Club and our important programs. We can't do it without you!  
 To contact the WCC Office, email westburycc@sbcglobal.net or call 713-723-5437.

## THE LARRY MERCER TEAM



Are you curious about the value of  
your home in today's market?

Call the area specialists today!

Call The Mercer Team!



2626 Richmond Ave Houston TX 77098

# Westbury Area News

## Meyer Library Special Events

### Winter Celebration!

**Sat., Dec. 10, 10:30-11:30AM**

Celebrate the coolest season of all! Join us for winter-themed games, crafts, and more!

### Mystery Book Club

**Thurs., Dec. 15, 1PM – 2PM**

Do you enjoy reading and discussing books? Join us for a lively discussion.

### Teen Craft

**Thurs., Dec. 15, 6PM – 7PM**

Get your craft on at the library with other teens! Geared for teens ages 13-18.

### Read with Paws-itive Pups

**Sat., Dec. 17, 10:30AM - 11:30AM**

Come and read with our trained therapy dogs! Children are invited to relax and read aloud their favorite picture books alongside comforting canine companions to ease their reading discomforts and paws-ively encourage them. Intended for school age children.



**MEYER LIBRARY ❖ 5005 W. BELLFORT**



## YOUR LIBRARY

### Santa Claus is Coming... to Your Library!

**Thurs., Dec. 22, 7PM– 7:45PM**

Read about Santa, meet Santa, and strike a pose with everyone's favorite holiday visitor!

### Para Los Niños

**Tues., Dec. 27, 4PM – 5PM**

¡Bienvenido! Come explore the library, all of its resources and our parent workshops that will teach strategies and activities to improve family literacy and parents' abilities to serve as their child's first teacher in a friendly, bilingual environment. This program is conducted by the Children's Museum of Houston.

### Pajama Storytime

**Thurs., Dec. 29, 6:30-7:15PM**

Snuggle up to a good book at the Houston Public Library Pajama storytime. Wear your pajamas and bring your bedtime friend as we sooth you into an evening storytime. All ages welcome.

## Fiesta Grocery Store Update

Last month, we informed readers that the Fondren @ W. Belfort Fiesta grocery store planned to renovate and expand. We are pleased to announce that the Fiesta at South Main and South Post Oak is also being currently remodeled. Photo below.



**WWW.WESTBURY  
CRIER.COM**

**WHAT IF ONE DOCTOR COULD CONNECT YOU WITH THE EXPERTISE OF MANY?**

At Houston Methodist, your primary care doctor collaborates with world-renowned specialists every day, bringing you wide-ranging medical expertise, personalized for you, with convenient locations and same-day appointments you can schedule online. Your health, your way — that's how the highest ranked hospital in Texas puts you first.

Accepting most major insurance plans. Choose your doctor or schedule online at [houstonmethodist.org/primarycare](http://houstonmethodist.org/primarycare) or call **713.394.6638**.

**HOUSTON  
Methodist  
PRIMARY CARE GROUP**

# Willow Waterhole News

## Scouts Create New Forest at Willow Waterhole

Sara Hansen, Gian Allen, and Joshua Watson teamed up for their Gold and Eagle projects to turn a barren site at the Willow Waterhole Greenway into a forest of 31 trees (see photo). The site is located at the northeast corner of Levitt Lake and the forest will eventually provide a natural screen from a nearby South Post Oak commercial strip center. Sara is a member of Girl Scout Troop 21126 from St. Thomas More, Gian and Joshua are members of Boy Scout Troop 500 from Brentwood Church.

Trees for the project came from the Westbury Community Garden; they had been donated by Trees for Houston and nurtured for three years by WCG members. Mulch for the project was donated by Keep Houston Beautiful. The scouts were responsible for organizing workday labor, funding the purchase of tree stakes and supports, and providing lunch for participants. The Willow Waterhole Greenspace Conservancy (WWGC) provided tools and Bill Burhans, Conservation Director, served as project advisor.

The scouts designed the pattern for the trees and selected the species placement. The trees were all

natives - sweetgum, swamp oak, cedar elm, and loblolly pine. Their project choice reflected their desire to positively impact the environment and help beautify the community. Sara, Gian, and Joshua would like to thank their parents, fellow troop members and scoutmasters, and the WWGC for their help in completing the project.

Howard Sacks, past President of the WWGC and current President of Friends of Levitt Pavilion Houston, commented "we are so appreciative of Sara, Gian, and Joshua electing to complete their Gold and Eagle Badges at the Greenway. The site they selected to plant trees is close to the planned music pavilion and it will improve the visual experience of all those coming to events. The Greenway is a more beautiful place because of their efforts."



## Salem Lutheran Annual Day of Community Service

On Sunday, September 11th, thirty-five members of the Salem Evangelical Lutheran Church spent their afternoon performing community service at the Willow Waterhole Greenway. They put thirty-four plants in the ground at the Rafferty Memorial Wetlands (Blue Flag Iris, Dwarf Palmetto, and Bald Cypress), picked up litter, moved mulch, and mulched and pruned trees. Members also took canoes recently purchased by the Willow Waterhole Greenspace Conservancy (WWGC) out on Westbury Lake for their inaugural voyage!

George Zemanek, Bob Ellet, and Randy Ditmore organized and led the community service project for the Church congregation. Bill Burhans, Ralph Rieger, and Valerie and Ray Runge from the WWGC planned and supervised the tasks.

Mr. Rieger, President of the WWGC, said, "I would like to thank Salem Evangelical Lutheran Church members for their continued support in the development and maintenance of the Greenway. They come out each year in the heat and perform much needed work, we depend on volunteers like them to improve this wonderful community asset."

### \*Area Residents and Your Neighborhood Specialists\*



**6031 McKnight**  
\$299,500



**JACKIE MURRAY**  
Cell: (713) 825-9179  
jackiem@waynemurray.net



Wayne Murray Properties  
Since 1987



**KENDYL MAURER**  
Cell: (281) 904-8199  
kendylm@waynemurray.net



**5234 Spellman**  
\$339,900

"We sell more, because we do more."  
Over 40 Years of Experience!!



**5634 Sanford**  
Just Listed!



**6022 Ludington**  
\$259,900



Your Home Could Be Here!!



**6018 Dellfern**  
\$194,990



**6003 Warm Springs**  
\$299,000



# SNOW



**AT THE  
WILLOW  
WATERHOLE**

Schwartz Gazebo  
5300 Dryad

**Sunday, December 4, 3-5PM**



**FREE**  
**25 FT SNOW  
HILL!**

All children 4 &  
older are welcome  
to take a slide  
down the big hill!  
A smaller snow  
"slide" will be  
available for  
toddlers.

Refreshments  
available from  
PUCs



Brought to you by:



**For more information, go to [willowwaterhole.org](http://willowwaterhole.org)**

# White Elephant Sale

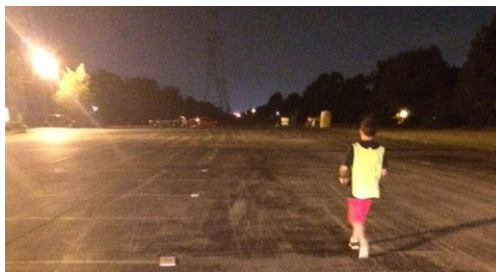
For 50 years the Westbury Civic Club has hosted its twice-yearly White Elephant Sales giving Westbury residents a chance to sell unwanted items in a controlled situation with security. The November sale was a sellout of all 51 booths. The weather was perfect. Hundreds of shoppers were lined up for the 8 AM opening and many treasures changed hands. There were clothes, shoes, books, furniture, toys, dinner ware, service ware, pans, statues, stuffed animals, tools, plants and more.

There were many, "Hi, I thought that was you. How are you?" conversations – people catching up. It really was a great day for the sale. The sale ended at high noon with smiling vendors and smiling shoppers wending their way back home. There will be another White Elephant Sale in the Spring – another chance to buy most anything. The Crier will keep you informed.

**The NEXT White Elephant Sale will be in the Spring 2017!**



**2016 Fall White Elephant Sale**



*Early morning parking lot set-up*



*Left: Line waiting for 8AM start of the Sale!  
Above: WCC Volunteers at the PUCs truck for much needed coffee*



## JACKIE ZEHL & TERESA LEWIS

SUCCESSFULLY MARKETING YOUR HOME TO THE GREATEST NUMBER OF BUYERS FOR 30+ YEARS

EXPERIENCE IS THE DIFFERENCE



**MAPLEWOOD SOUTH - \$550's**  
6231 Queensloch 4/2.5/2 + Renovated + Hardwoods



**MAPLEWOOD SOUTH - \$470's**  
6227 S. Braeswood 4/2.5/2 + Renovated + SS Appliances



**MAPLEWOOD SOUTH - \$450's**  
5839 Yarwell 4/2.5/2 + Renovated + Granite



**MAPLEWOOD SOUTH - \$390's**  
5906 Yarwell 4/2.5/2 + Renovated + Granite



**BARKLEY SQUARE - \$350's**  
5627 Wigton 3/2/2 + Hardwoods + Fresh Paint



**ROBINDELL - \$340's**  
5807 Reamer 3/3/2 + Renovated + Quartz Counters



**WESTBURY - \$319,000**  
5235 Hummingbird 3/2/2 + Move in Condition + Pool



**MAPLEWOOD SOUTH - \$280's**  
5934 Wigton 4/2.5/2 + Pool

**SOLD**

5767 Braesheather      5214 Dumfries  
5827 Yarwell            5043 Lymbar  
11119 Burdine



PREMIERE PROPERTIES

**JACKIE ZEHL & TERESA LEWIS**  
713.349.7221      713.349.7227  
WWW.ZEHLLEWIS.COM  
COLDWELL BANKER UNITED, REALTORS



# Westbury Community Garden

## Are you thinking of going native in your flower beds?

The Westbury Community Garden (WCG) has beautiful Fall flowers and many pollinators visiting them. There are LOTS of Gulf Fritillary Butterflies, some remaining Monarchs heading south, Fiery Skippers, Long-Tailed Skippers, and numerous other butterflies, bees, bumblebees and spiders, all working alongside the gardeners. There are also the shy green Anoles along Basil Blvd.

Come see the Swamp Sunflowers, "Naked Lady" (Licoris) Spider Lily, Tangerine Esperanza, Rudbeckia (black eyed Susan), Purple Echinacea, Zinnias, Marigolds, Coreopsis, Cosmos, Red Texas Star Hibiscus and the interesting native flowers still blooming in the B1 Pollinator demonstration bed.



## Houston First introduced to the WCG

Earlier in the year Virginia Livingston and Becky Edmondson made a presentation to Houston First to introduce them to the WCG. In October, John Rolfe, Chief Administrative Officer of Houston First, and Arcy Munoz, Community Relations Manager, were able to come out and see all the good things that are happening at the garden. Houston First promotes Houston and operates many of the downtown convention and arts venues.



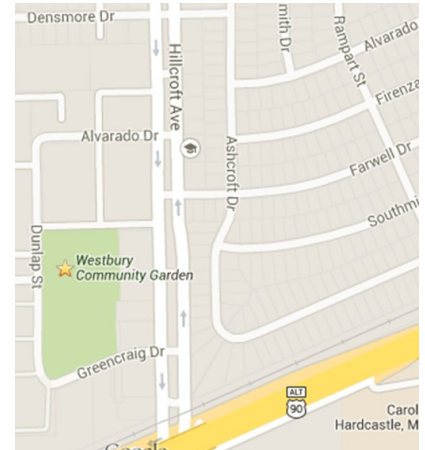
## WCG hosted Urban Harvest's 21st Annual Fall Celebration

Kolter Elementary Principal Julie Dickinson with Pilar Hernandez, who received the Green Jeans Award at the November celebration. Photos by Steve Goldberg



## WHERE IS THE GARDEN?

12581 Dunlap (77035) is off Hillcroft between W. Airport and South Main. Heading south on Hillcroft, turn right onto Green Craig, follow it around the bend where it turns into Dunlap. The large blue roof on the WCG Pavilion is readily visible. Street parking.





**Plant It Forward Farms**

**Farm Stand Hours**  
 Saturday: 10AM - 3PM  
 Sunday: 11AM - 3PM

## Soil testing

Lisa Groves, City of Houston Environmental Investigator, is assisted by Rebekah Dye of Asakura Robinson, to complete soil tests needed for the SITES certification part of the garden Master Plan efforts.



## Maxx Gonzalez

**El Arte D'Pintar**  
**Expert Int./Ext. Paint**  
**832-212-0739**  
**maxx@maxxgonzalez.net**  
**www.maxxgonzalez.net**



◆ Sheetrock Repair

◆ Stain

◆ Fancy Texture

◆ Walls

◆ Faux Finishing

## ALL TYPES IRRIGATION, INC.

OVER 30 YEARS EXPERIENCE  
 Design • Drainage • Installation • Service  
 Commercial • Residential



**Emil Becker**  
 T.I.L. #4415  
 D.L. #126891

Office: (713) 726-1636  
 Fax: (713) 726-8322  
 Cell: (713) 819-2872



**LEGACY**  
ROOFING & EXTERIORS  
WIND & HAIL SPECIALIST  
713-819-5537  
YOUR LOCAL ROOFER SERVING WESTBURY SINCE 2006.

**FREE ONE-HOUR INITIAL CONSULT INCLUDING REVIEW OF PRIOR YEAR TAX RETURN!!!!!!**

*Pam Schertz, CPA, LLC*  
Small Business Computerized Accounting Services & Training  
Certified QuickBooks Pro Advisor  
Individual & Small Business Tax Returns  
Payroll processing and tax filing.  
5322 W. Bellfort Ste. 211/212  
Call for appointment today  
281-974-2096




**FARMERS**  
INSURANCE  
Auto-Home-Life-Renters-Condo-Boat-Flood  
Motorcycle-Business-Commercial Auto  
Insuring Texans since 1999

Peter Zografos Agent  
5322 W. Bellfort #206  
(713)-877-8811  
[pzografos@farmersagent.com](mailto:pzografos@farmersagent.com)  
[www.farmersagent.com/pzografos](http://www.farmersagent.com/pzografos)



**ASTRO PLUMBING**

“YOUR PROFESSIONAL PLUMBER”  
BEST PRICES • FREE ESTIMATES • SENIOR DISCOUNT

**CALL JOHNNY**  
Cell: 713-256-0017

JOHN LEWIS M16312 ALL MAJOR CREDIT CARDS ACCEPTED



**Legal Eagle CONTRACTORS REMODELING**  
Since 1974  
[www.legaleaglecontractors.com](http://www.legaleaglecontractors.com)  
Houston's Most Trusted Contractors



ACCREDITED BUSINESS  
BBB Rating: A+



**Dan Bawden, Master Builder**  
**713-723-8850**  
Come see our Showroom at  
**5008 Locust Street**  
at South Rice, Bellaire  
**Design and Build**  
**Kitchens ★ Baths ★ Additions**  
Westbury's favorite remodeler for over 25 years!






Senior-focused Remodeling is our Specialty

Merry Christmas \* Merry Christmas \* Merry Christmas \* Merry Christmas



**COLDWELL BANKER**  
UNITED, REALTORS®

**Tony & CharlseY Porcarello**  
\*\*\* Westbury Specialist \*\*\*  
Tony: 713-898-1546 - tporcarello@yahoo.com  
CharlseY: 713-898-1484 - charlseY@swbell.net



37 Year Westbury Resident



11010 Crestmore  
\$575,000



6031 Cartagena  
\$239,900



11623 Ashcroft  
L@@K We SOLD Another One!

**Recently Sold!**  
5827 Arboles  
5430 Willowbend  
11607 Ashcroft  
10903 Cedarhurst  
11630 Ashcroft  
5726 Farwell  
5946 Lattimer  
6014 Warm Springs  
10811 Moonlight  
5722 McKnight

Happy New Year \* Happy New Year \* Happy New Year \* Happy New Year