



# Westbury Crier

VOLUME 58, ISSUE 12

DECEMBER 2012

## HIGHLIGHTS:

- NO WCC Board Meeting in December
- Street light out on your street, check out pg 22
- Westbury Park donation form on pg 5.
- December's heavy trash is JUNK WASTE. Pick up is December 13 for ALL of Westbury.
- HAPPY HOLIDAYS!

## INSIDE THIS ISSUE:

Platou Center	4
Calendars	5
Westbury Park	6
Tree Planting	7
Stay Connected	9
Chapter 42	10
Dues Form	12
Security/Crime	13
Westbury Schools	15
Garden Appeal	17
Westbury Awards	18
Garden News	19
Backyard Composting	20
Willow Waterhole	21
Neighborhood News	22
White Elephant Sale Recap	23

## 13th Annual Deck the Halls Parade

When: Saturday, December 15

Time: 5PM

This year's parade theme is "Disney Princesses". Each princess will be wearing a gorgeous gown, some with trains 6 to 12 feet long. Some of the princesses will wear authentic Mardi Gras headpieces and costumes from parades in New Orleans. Other characters will be singing live songs from the Disney movies! There will be art cars, scouts, bands, businesses, and local organizations. New this year is the Westbury Moms and Dads Club, and their group of babies and toddlers in decorated strollers and bikes! All of the traditional favorites of the parade will be on hand celebrating the diversity of Westbury. See Santa, Hanukkah Harry, Kwanzaa King, and more! There will be a new live nativity scene this year as well.

The parade organizers are asking all residents on the route to light up their yards. The parade will take the traditional route from 5300 Belrose to Burlinghall to Ashcroft to Warm Springs. If you are a musician, artist, someone with a talent to contribute to the parade, or just think it would be fun to be in a parade, let the parade organizers know.

For more information and a map of the route, visit us at [www.deckthehallsparade.org](http://www.deckthehallsparade.org), or "like" us on Facebook. As always, we are collecting toys for Pancho Claus to distribute to needy children or to those in the Westbury area who would otherwise not receive gifts for Christmas. Please help us by donating toys!

If you would like to participate or help, please contact us by phone or email at [ember\\_mandell@yahoo.com](mailto:ember_mandell@yahoo.com) or 713-367-3787.

**\*This is not a WCC sponsored event**



**YARD OF THE MONTH  
HOLIDAY DECORATION  
JUDGING WILL TAKE PLACE  
SATURDAY, DECEMBER 15  
AND SUNDAY, DECEMBER 16.**



## WCC OFFICE HOLIDAY HOURS

**December 24– January 1:** WCC Office will be not be open during its normal hours. Please call before coming to the office to make sure someone is there.

Voice mail and email will be checked daily.  
Phone: 713-723-5437  
Email: [Westburycc@sbcglobal.net](mailto:Westburycc@sbcglobal.net)

**Happy Holidays from the WCC Office!**

Published by:  
Westbury Civic Club, Inc  
Editor-in-chief:  
Jennifer Edmondson  
Edited by:  
WCC Publication Committee  
Copyrighted ©

## Westbury Civic Club Board of Directors

President	Becky Edmondson	wccpresident@westburycrier.com
Vice President	Marcia Hartman	wccvp@westburycrier.com
Secretary	VACANT	wccsecretary@westburycrier.com
Treasurer	Pamela Schertz	wcctreasurer@westburycrier.com

## Directors at Large

Communications	VACANT	wcccommunications@westburycrier.com
Community Relations	Cindy Chapman	wcccommunityrelations@westburycrier.com
Deed Restrictions	VACANT	wccdeedrestrictions@westburycrier.com
Flood Control & Infrastructure	VACANT	wccflood@westburycrier.com
Greenspace Beautification	Carlos Mata	wccmaintenance@westburycrier.com
Membership	Janie Schexnayder	wccmembership@westburycrier.com
Security	Leslee Cross	wccsecurity@westburycrier.com
Volunteer Coordinator	VACANT	wccvolunteers@westburycrier.com

## Section Directors

Westbury 1	Sylvia Rendon	Westbury1@westburycrier.com
Westbury 2	Austin Chen	Westbury2@westburycrier.com
Westbury 3	VACANT	Westbury3E@westburycrier.com
Westbury 3	Ron Brown	Westbury3W@westburycrier.com
Westbury 4	VACANT	Westbury4E@westburycrier.com
Westbury 4	Vicki Eldridge	Westbury4W@westburycrier.com
Westbury 5	Virginia Livingston	Westbury5E@westburycrier.com
Westbury 5	VACANT	Westbury5W@westburycrier.com
Westbury South	Robert Capps	Westburysouth@westburycrier.com
Parkwest 1	William Grimsinger	Parkwest1@westburycrier.com
Parkwest 2	Peter Zografos	Parkwest2@westburycrier.com
Parkwest 3	Joe Niles	Parkwest3@westburycrier.com

## Westbury Civic Club Office

**Office Hours:** Monday—Thursday 9:30AM— 1:30PM\*, Closed Fridays

**Address:** 5322 W Bellfort Ste. 107 Houston, TX 77035

**Phone:** 713-723-5437      **Office Manager:** Jennifer Edmondson

**Email:** Westburycc@sbcglobal.net

\*The office is closed on all major holidays, weekends (follows HISD calendar)

**FREE NOTARY SERVICE IS AVAILABLE TO ALL WESTBURY RESIDENTS**

## USEFUL PHONE NUMBERS

**Westbury Area Patrol Constable Dispatch**

**281-463-6666**

HPD Non-Emergency

713-884-3131

Power Outages (Centerpoint)

713-207-2222

Westbury HPD Storefront

713-726-7126

Platou Community Center

713-726-7107

Poison Control

1-800-764-7661

Street Light Repairs (Give pole number)

713-207-2222

District K Councilmember Larry Green

832-393-3016

District C Councilmember Ellen Cohen

832-393-3004

County Commissioner El Franco Lee

713-755-6111

## City of Houston 311 Hotline

**(for all Non-Emergency Issues)**

Forestry Department

Graffiti

Hazardous Waste Disposal

Heavy Trash

Neighborhood Protection

Parking Management

Recycling

School Crossing Light Repairs

Water and Sewer Repair

**Stay connected!**

**Are you one of the 503  
likes on our Facebook  
page, Westbury Houston?**

**WWW.WESTBURYCRIER.COM**

# President's Message

As I write this message in November, my thoughts are on Thanksgiving and all the many things we have to be thankful for as Americans, Houstonians and Westburians. The elections are over, but our work is now to ensure that the monies in the bonds are spent wisely and appropriately. Parker Elementary will get a new school building, and Westbury High School will get much needed renovations and a permanent building to house their ninth grade students. City Bond Proposition D allocated funds for a new Meyer Library building. City Bond Proposition B, also known as the "Parks By You" trails and parks initiative, has great potential for Westbury and city residents. Houston Community College (HCC) will build a new Workforce Training Center near us and also in Stafford. If you have the time and the inclination, get involved in the process of shaping these proposals into actual construction projects.

I visited all six Westbury precinct polling places on Election Day. People asked me, "Why did you do that?" I love Election Day and the power that the right to vote gives each of us. In 1920, the 19<sup>th</sup> amendment gave women the right to vote, and in 1970 the 26<sup>th</sup> amendment extended the voting age to allow me to vote in the Nixon/McGovern election. These are important rights and to say one's vote does not matter is just a way to strip us of our rights. Sorry, I'll get off my soapbox now. Many thanks go to the hardworking election judges, precinct chairs, and election workers who volunteer their time election after election. Westbury precincts were busy even though many of you took advantage of early voting.

More thanks go to all the hardworking volunteers of Westbury who make our neighborhood a great place to live. To all of who you serve on the WCC board; show up to volunteer at events; host a Neighborhood party; support the neighborhood with your assessments or dues; maintain your home or lend a hand of support to a neighbor...I give thanks for each and every one of you. Each of you makes a difference. You'll read in this month's Crier stories of people who have made a difference. And I will close with a favorite quote of mine from Margaret Mead, "Never doubt that a small group of thoughtful, committed citizens can change the world. Indeed, it is the only thing that ever has".

And as the year comes to a close and many of us celebrate the holidays, I wish you a Merry Christmas, a Happy Chanukah, or a simple Happy Holiday and a very Happy New Year.

Wishing all of you the joys of the season,  
Becky Edmondson



Family Tree Planting Day 2012  
@ Westbury Park

## December Volunteer Opportunities

\*Scanning Historical Documents at the WCC office, call Jennifer at 713-723-5437

\*Deed restriction revision committee, call Jennifer at 713-723-5437 for more information

\*PW2 resident? Want to be on the architectural control committee? Call the WCC office at 713-723-5437

\*Street light check, call WCC office at 713-723-5437

# NO WCC BOARD MEETING IN DECEMBER

## Board Notes

- Discussed constable crime report and the possibility of adding an additional deputy.
- Becky Edmondson gave an update on the HHA/Garden situation.
- Discussed the importance of street numbers being visible on homes and on curbs for the WAP Constables, HPD & HFD.

## Mandatory to Sterilize Stray Cats: December 2007 City Ordinance

The Civic Club office is getting calls from neighbors who are concerned about a growing problem with feral cats (homeless, wild, or untamed cats) in some parts of Westbury. If you are a well-meaning, cat-loving resident who is putting food out for feral cats, then you should know that you can be ticketed. Several residents have received citations for violating city animal ordinances.

"It shall be unlawful for any person intentionally to cause, suffer or permit the maintenance of an attractive environment for the assembly of a congregation of unconfined and unlicensed stray cats or dogs by the placement of dog food or cat food." City ordinance allows feral cats to be fed if they have been humanely trapped, evaluated by a veterinarian, vaccinated, sterilized, marked by a veterinarian in an approved manner, and then returned to the trap location. **If you are feeding any feral cats, you are required to get them vaccinated and sterilized, in a manner approved with the city ordinance.** According to BARC, about 250,000 stray cats live in the city. A female cat can start reproducing at four months; they have 3-4 kittens in each litter and can have three litters each year. Do the math, in a matter of months the numbers can get out of control.

## "Like" our Facebook page, Westbury Houston!

"Like" us on  
Facebook

"Like" us on  
Facebook

# Platou Community Center

11655 Chimney Rock

Monday-Thursday 12PM—8PM; Fridays 11AM-7PM

Supervisor: Dan Reilly, Daniel.reilly@houstontx.gov or 713-726-7107

## DECEMBER SPECIAL EVENTS

**Annual Holiday Social and Potluck:** Tues., Dec. 11 from 11AM -1PM at the Platou Center. Bring a dish and enjoy lunch with members of the different groups that meet at the Platou Community Center.

**City Quilt Show:** Fri., Dec. 7, 10 to 2PM at Sagemont Recreation Center, 11507 Hughes Rd. See quilts from citywide quilt groups, including the Westbury Quilting Bee, at the Parks Department Quilt Show.

## Classes/Groups/Meetings

**Stretching Exercise Class** M, W, F 9-9:45AM

**Aerobics** Tues. and Thurs., 6:30-7:30PM

**Line Dancing Class** Mon., 1-2PM

CALL 713-726-7107 FOR MORE INFORMATION FOR  
THE ABOVE 3 CLASSES LISTED

## Exciting New Year Planned for Platou

Check the January 2013 *Crier* and the Platou Community Center Facebook page for new programs starting in January. We hope to offer a genealogy class, cooking demonstration, wellness information, and more. Please call Dan Reilly at 713-726-7107 to enroll in an existing class or to volunteer to lead a class.

## HOLIDAY SCHEDULE

**Dec. 24 and 25: CLOSED**

**Dec. 26–28: OPEN**

10AM-2PM for children's activities

**Jan. 1: CLOSED**

**Jan. 2-4: OPEN**

for children's activities

**Jan. 7: NORMAL SCHEDULE**

**RESUMES**

## After School Enrichment

This is a **free** childcare program for kids ages, 6 to 13, from 3PM to 6PM. Call 713-726-7107 for more information.



Don't forget you can  
recycle cardboard/  
paper items at  
Chimney Rock Park!

## TOPS: Take Off Pounds Sensibly

**Weight loss support group:** Tues., 5:45-7PM

Drop in to preview the program or call Dorothy 713-723-4441 or Naomi 713-988-2233

**Ballroom Dance Class :** NO CLASS IN DEC.

Call Marilyn at 713-729-9425 to sign up for January

**Quilting Workshop** Tues., 10AM - 3PM

Contact Janie at 713-721-5526

**Games** Wed., 10 AM

Contact Wally at 713-729-9310

**Portable Projects** Thurs., 9:30- 11:30AM

Any kind of handiwork: knitting, crochet, needle-point, card-making. Contact Hazel at 713-729-4568

**Westbury Community Garden** Mon., Dec 17

at 6:15PM. Public welcome! Come learn about the Garden and gardening.

## \*WE ARE IN YOUR NEIGHBORHOOD\*

We live and work in the neighborhood!



**5223 Kinglet**  
\$207,500



**JACKIE MURRAY**  
Cell: (713) 825-9179

jackiem@waynemurray.net



Wayne Murray Properties

*Area Residents &  
Neighborhood  
Specialists*



**KENDYL MAURER**  
Cell: (281) 904-8199

kendylm@waynemurray.net



**5242 Willowbend**  
\$254,500



**5914 Rutherglenn**  
\$419,500

## "We sell more, because we do more."

Call for more information on featured listings!



**11007 Hillcroft**  
*Just Listed!*



**5803 Cheena**  
Another One Sold!!!



**10815 Ashcroft**  
Another One Sold!!!



**5807 Hummingbird**  
Another One Sold!!!



**11114 Ashcroft**  
Another One Sold!!!



**5131 Torchlight**  
Another One Sold!!!

# What's Happening in Westbury

## Events & Meetings Calendar December 2012

15-16	<b>Holiday Decoration Judging for Yard of the Month.</b> Get those decorations and lights out! If you have a house you want to nominate, call the WCC office at 713-723-5437
Sat 15	<b>Deck the Halls Parade 5PM</b> Holiday parade thru Westbury 3. More info on page 1.
X	<b>NO Monthly Audubon Society Bird Survey</b>
Mon 17	<b>Westbury Community Garden Meeting 6:15PM</b> Platou Community Center— 11655 Chimney Rock
Mon 17	<b>Brays Bayou Association Meeting 7:30PM</b> The Gathering Place—5310 S. Willow
X	<b>NO WCC Board Meeting in December</b>
X	<b>NO WAIC/SuperNeighborhood 37 Meeting</b>
24-31	<b>WCC Office Closed / Limited hours - see page 1</b>
Jan 1	<b>WCC office Closed</b>

**Happy Holidays from the Westbury Civic Club!**



### Important Trash & Recycling Information

- ♻️ Trash cans need to be on curb by 7AM Thursday
- ♻️ Trash cans must be removed by 10PM Thursday
- ♻️ **Trash** cans must be placed at least 3 feet apart
- ♻️ Trash cans must be stored out of sight.
- ♻️ Yard waste **MUST** be in the correct biodegradable bags
- ♻️ No heavy trash out before 6PM the Friday before pick-up date
- ♻️ **YARD WASTE** is not considered tree waste & won't be collected with heavy trash. It is collected on regular Thursday trash day as long as it is in the correct recyclable bags
- ♻️ Call 311 for all trash questions and complaints
- ♻️ Nearby Trash Depositories and Recycling Centers:  
**SW Trash Depository/Recycling Ctr -10785 Southwest Frwy**  
 Hours: Wed.—Sun. 9AM to 6PM; Accepts Junk Waste, Tree Waste and Recyclables. Current utility bill needed.  
**Environmental Service Center - 11500 South Post Oak**  
 Hours: Tues/Wed. 9AM-3PM; 2nd Saturday 9AM-1PM  
 Accepts Hazardous Household Waste & Electronic Waste
- ♻️ Refer to [www.westburycrier.com](http://www.westburycrier.com) or [www.houstontx.gov](http://www.houstontx.gov) or more trash and recycling information

## Planning Calendar:

**February 1, 2013:** Mandatory Assessments due for PW1 & PW2

**February 22, 2013:** Rodeo Trail riders at Westbury Area Schools

## Heavy Trash & Recycling Calendar

December 2012	
<b>Thurs 13</b>	Curbside Recycling All of Westbury
<b>Thurs 13</b>	Heavy Trash— <b>JUNK WASTE ALL OF WESTBURY</b>
<b>Thurs 27</b>	Curbside Recycling All of Westbury
January 2012	
<b>THURS</b>	Heavy Trash— <b>TREE WASTE ONLY ALL OF WESTBURY</b>

## City of Houston Heavy Trash

January	Tree Waste	July	Tree Waste
February	Junk Waste	August	Junk Waste
March	Tree Waste	Sept.	Tree Waste
April	Junk Waste	October	Junk Waste
May	Tree Waste	Nov.	Tree Waste
June	Junk Waste	December	Junk Waste

## ATTENTION ALL RESIDENTS:

EFFECTIVE **NOVEMBER 2012**, THE HEAVY TRASH SCHEDULE HAS BEEN CHANGED. **ALL OF WESTBURY** WILL NOW BE PICKED UP ON THE **2ND THURSDAY** OF THE MONTH. This change was only for the pick up day, not for the type of trash picked up.

For monthly breakdown of trash type, please see chart above.

# Westbury Park

## Help Westbury Park Get a New Shade Structure

A new Westbury Park Playground is coming soon! See the design for one of the playground structures pictured below. There is an additional Toddler Playground included but it is not pictured. Westbury Park is the park located near Parker Elementary. The existing playground equipment will be demolished by the city in a few months and construction of the new playground area will begin in late 2012. City taxpayer funds will purchase and install the play equipment; however, the city does not provide shade covers similar to what has been built at the nearby Godwin Park playground. A "Friends of Westbury Greenspaces" committee has been created to raise additional funds to purchase a shade cover similar to what has been built at Godwin Park (see picture on the right). The neighborhood around Godwin Park raised money to build their shade structure, and **we can do it, too!**

Playgrounds are attractive assets to our community and play structures with shade will encourage our kids or grandkids to exercise outside even in hot weather. Please consider making a tax deductible contribution. Many employers offer matching gifts for community projects such as this. All amounts are appreciated and donors contributing \$250 or more will have their names engraved on a plaque placed at the playground as a permanent thank you.

Please use the form below. The WAIC is a 501(c)(3) organization which frequently partners with the Westbury Civic Club for improvement projects. Donations will be tax-deductible to the extent allowed by law. If you would like more information about fundraising or would like to help with the effort, then please contact Westbury residents Bill Burhans ([burhans56@yahoo.com](mailto:burhans56@yahoo.com)) or Melanie Rosen ([rosenworks3@gmail.com](mailto:rosenworks3@gmail.com)).



Main Playground  
(Ages 6-12)



**Donations as of  
11/20/12**

**\$13,573 from Westbury  
residents and businesses  
and \$1,375 in matching  
grants from employers.**

**Total= \$14,948**

**Friends of Westbury Greenspaces Donation Form**

Name(s): \_\_\_\_\_  
 Address: \_\_\_\_\_  
 Phone #: \_\_\_\_\_  
 Email: \_\_\_\_\_

Donation Amount \$ \_\_\_\_\_ \* (if amount is \$250 or more please fill out below)

\*Names on plaque: \_\_\_\_\_

Mail donations to: WAIC/Friends of Westbury Greenspaces, 5322 W. Bellfort, Suite 107, Houston, TX 77035.

Checks should be made payable to the Westbury Area Improvement Corporation (WAIC)/Friends of Westbury Greenspaces.

\$\$\$\$ Free Copy of Tax Return on CD \$\$\$\$  
 \$\$\$\$ Free Review of Prior Year Return \$\$\$\$

**Schertz & Manning CPAs PLLC**

Pam Schertz, CPA      Diana Manning, CPA

Small Business Accounting & Tax Services

5322 West Bellfort, Suite 211    Houston TX 77035

**281-974-2096**

**Westbury  
Executive Office  
Business Center**

We support growing businesses

11415 Chimney Rock  
Houston, TX 77035

Phone (713)729-1122  
Fax (713)729-5431  
E-mail: [Rieger@riegercpa.com](mailto:Rieger@riegercpa.com)

# Family Tree Planting 2012

If you were driving in Westbury on the very pleasant Saturday morning of November 10, you would have seen a crowd of people at Westbury Park along Willowbend and another crowd of people on the esplanade in the 5900 and 6000 block of W. Belfort. The Westbury community had another successful tree planting thanks to the many residents and non-residents who volunteered to help plant trees and spread mulch.

**We thank Westbury residents:**

- Bill and Liam Burhans
- Gabe Lenz
- Jeremy Russell
- Lach Mullen
- Robert & Sarah Osborne & Emerson
- Tom Gwillim
- Chris Kopecki
- Susan Lilly
- Lindsay and Nathan Hayden & Ethan
- Robert Capps
- Jennifer Edmondson and Connor
- Becky Edmondson
- Cindy Chapman
- Jane Falk and Hailey
- Kathy Elder
- Marcia Hartman
- Wayne Slaikeu
- Karen and Bill Schubert
- Hazel Potvin
- Carlos Mata
- Melanie Rosen and Alex
- Janie Schexnayder



Clockwise from top right: Volunteers at Westbury park; WCC Super Volunteers Carlos Mata & Hazel Potvin; Westbury residents Nathan & Ethan Hayden; Memorial Mustang Bunch with Carlos Mata; Westbury Resident & WCG Member Tom Gwillim; Westbury residents Sarah, Emerson, and Robert Osbourne



**We thank the youth that cheerfully worked for us.**

**Memorial Mustang Outreach Bunch**, 42 students from Memorial High School and a few parents who directed the work. This is a terrific group. See more details at [www.mmob.com](http://www.mmob.com).

**Cristal Irlano and four youth from Open Minds**, a City of Houston youth outreach program.

**Leading Ladies**, six young women from high schools in SW Houston, who love community service, especially green things!

We thank the **Parks and Recreation Staff** who helped prepare the sites by breaking the turf and delivering mulch. Jed Aplaca, Victor Cordova, and Shirlyn Chambers.

We also thank **Larry Green, our esteemed city councilman**, for his hard work on the Westbury Park site digging, axing and planting trees along with other volunteers! Community Liaison Barbara Hite was also on hand.

Last but not least, we thank **Trees for Houston**, whose mission is to continually plant trees throughout the Houston metropolitan area to beautify the city and improve air quality. They are always willing to help Westbury.



**THANK YOU TO ALL THE WONDERFUL VOLUNTEERS!**

**RED RIVER CONTRACTING**

**713-665-9500**

**WWW.REDRIVERTRADES.COM**

**Concrete Contractors**

- Driveways - Foundations - Patios - Walks
- Pavers - Stained Concrete - Breakout
- Residential & Commercial

*Serving The Westbury Area for 5 Years*

Texas Registered Builder #44786

Bonded & Insured



**RRC**

# City CM Larry Green @ Tree Planting



The Leading Ladies (pictured below) helped Larry Green plant a magnolia tree at Westbury Park.

Connor Edmondson, grandson of WCC president Becky Edmondson, helped Larry dig a hole for an oak tree. (pictured bottom right)

For more "green" activities and fun volunteer opportunities, make sure to check out our Facebook page, Westbury Houston and our website [www.westburycrier.com](http://www.westburycrier.com)



**A SPECIAL THANK YOU TO  
DISTRICT K CITY COUNCILMEMBER  
LARRY GREEN FOR WORKING  
HARD ALL MORNING AT THE  
WESTBURY PARK FAMILY TREE  
PLANTING SITE!!!**

**Meadows Preschool**  
creative learning experiences  
professional teachers  
Babies—Pre K.

**713.255.7025**  
4300 W. Bellfort  
77035

*The little school...with a BIG heart!*

Welcomes  
New Clients! 10% off  
boarding with Ad

**FoNDReN**  
**5 STaR KeNNeLS**  
**281-835-4445**

Boarding  
Grooming  
Training  
Doggie Day Care  
Dog Park  
Supplies

14420 Fondren, One block South of Beltway 8  
[www.fondren5starkennels.com](http://www.fondren5starkennels.com)



## Stay Informed and Up-To-Date

### Staying Informed: Southwest News

It seems like there are so many ways to stay informed these days with the news media, emails, websites, Facebook and Twitter. Here in Westbury we publish the *Westbury Crier* newsletter each month (since 1956!). We have added a website ([westburycrier.com](http://westburycrier.com)) and a Facebook page to bring you supplemental information. There is also a weekly newspaper, the *Southwest News*, that does an excellent job featuring stories with a local focus. For over 25 years they have been locally owned- serving Bellaire, Meyerland, Westbury, Willow Meadows, Willowbrook, Post Oak Manor, Maplewood, and other Southwest Houston areas. We were recently looking through a file on the proposed apartments at 12501 Dunlap, then known as the Hillcroft Square Apartments, and found a front page article about the apartments in the very first Issue of the Southwest News back in 1985.

Unfortunately, the *Southwest News* newspaper is not delivered to every home in Westbury. However, it is now available electronically. You can subscribe to it at [www.village-southwest-news.com](http://www.village-southwest-news.com) and it will be delivered to your email each week. The Southwest News features many stories of interest to us in Westbury. They have covered the plight of the Westbury Community garden. Recently they have featured a story about the upcoming Athletic Complex expansion for Westbury Christian School and an award honoring our community volunteer Hazel Potvin. Their articles are informative and accurate.

Back in 2007, the Southwest News featured a story that Westbury had developed an Urban Tree Policy for our neighborhood. We received front page coverage and in the article it mentioned that we were looking for ways to get trees that residents could plant anywhere in their yard (not just in the city easement). A resident of Willow Meadows read the article, contacted the Westbury Civic Club and donated over 1,000 oak trees to us each year for three years in a row (more than 3,000 trees total). Now that's the power of journalism!

## "Like" our Facebook page Westbury Houston

### Houston Business Solutions Center

The Houston Business Solutions Center (HBSC) is the new home of the Office of Business Opportunity's (OBO) small business development efforts. Located in the lobby of 611 Walker Street, Houston 77002, HBSC is open Monday - Friday, 8 a.m. to 5 p.m.

HBSC's new and improved services include business resource guides, a revised **free** Getting Started Packet, **free** business workshops, SCORE (Service Corps of Retired Executives) counseling and permit and license information. One quick call or visit provides information on city, county, state and federal regulations affecting your business. Upcoming business workshops:

#### So You Want to Start a Food Business

Saturday, December 1, 2012, Noon - 2 p.m.  
Oak Forest Library, 1349 West 43rd Street

#### Tradition and Social Marketing for your Business

Saturday, December 10, 2012, 6 p.m. - 7:30 p.m.  
Central Library, 500 McKinney Street

#### Houston Business Licensing and Resources

Tuesday, January 15, 2012, 6 p.m. - 8 p.m.  
Houston Permitting Center, 1002 Washington Avenue

For more information visit [www.houstontx.gov/hbsc](http://www.houstontx.gov/hbsc) or call 832.393.0953.

# Now you can book your time online.

**ScheduleNow**

powered by  healthpost

### Scheduling your next appointment just got simpler.

Memorial Hermann's online scheduling tool, ScheduleNow, lets you schedule and confirm your appointment with just a few clicks. Visit our website to choose the best time and reserve your spot today at Memorial Hermann Southwest Hospital or the Memorial Hermann location near you.

PCPs • Specialists • Mammograms • Colonoscopies • Physical Therapy • ER

[memorialhermann.org](http://memorialhermann.org)

MEMORIAL  
HERMANN

## “Chapter 42” WARNING: New Land Development Codes are Coming

Westbury is located in the huge donut-shaped area between The Loop and The Beltway, and we may soon be affected by proposed revisions to the city development codes (Chapter 42). These proposed changes would dramatically affect how land is developed or re-developed in the donut area – land would no longer be developed according to SUBURBAN rules, but would instead follow much denser URBAN development codes already used inside The Loop. The affected land area would more than quadruple the land area currently designated as URBAN.

The city Planning Department notes that the city population is expected to continue to rise in the coming decades and much more housing is needed to handle the increase. Jane Cahill West, a community leader from the Washington Avenue SuperNeighborhood, has pointed out that the proposed revisions to Chapter 42 fail to address serious problems which have been encountered in new construction inside The Loop under the URBAN classification. Westbury participates in the SuperNeighborhood Alliance (SNA), so we are fortunate to know more about this issue than most communities in Houston. We agree that it would be desirable for the city to revise the Chapter 42 proposal and several other city ordinances to prevent or reduce some of the known problems. The city postponed implementing the Chapter 42 revisions in 2012 due to objections posed by the SNA and concerned citizens; however, the mayor will likely bring it up in 2013.

If you share our concerns, then please be ready and willing to contact the mayor and city council IF the WCC raises the alarm that fast action is needed. At this time, we are not sure whether the city will modify its proposals or push forward with

the existing proposal. Westbury has an established reputation as an area which votes in elections, and 2013 is an election year for the mayor and city council. Our votes count as political power. We want to balance the ability to create high density development with the need to provide a diversity of housing choices while keeping taxes reasonable and preserving the character of our Westbury community.

### What are some of the top concerns?

1. Extend the URBAN classification in stages, not all at once. Put priority on transit corridors or declining commercial properties or obsolete multi-family housing sites. Provide better protection for residential communities, including a grace period to modify/implement stronger deed restrictions (including Westbury).
2. Improve drainage by making stormwater management and adequate infrastructure an integral part of every project. Phase out “grandfathering” of detention exemptions that shifts flooding burdens to taxpayers and adjacent property owners. Enforce existing drainage ordinances (city rarely makes violators fix work that does not comply). When voters approved the ReBuild Houston charter change, the city said that a Developer Fee would provide some of the infrastructure funding; however, homeowners are already paying our share, but the Developer Fee has still not been implemented by the city.
3. Adopt modern urban street standards. Parking for persons with disabilities. Streets unobstructed by utility poles, fire hydrants,

signs, etc. Attractive and well-designed streets.

4. Keep public right-of-ways for use by the public and walkable and attractive. Do not allow public property to be used for private use – private parking on public land, sidewalks blocked by private utility meters or postal boxes, etc.
5. Solid Waste –require adequate space for garbage collection without compromising street, drainage or sidewalk
6. Limit lot-size averaging to entire blocks or larger tracts – to mitigate the effects of numerous small development projects on parking and vegetation and neighborhood character
7. Require adequate setbacks by setting minimum safe distances between lot lines and buildings.
8. Shared Driveway Projects – insure safe emergency access and vehicular circulation

*Opinions of: Becky Edmondson and Cindy Chapman, Delegates from Westbury to the SuperNeighborhood Alliance*

Sidenote: Jane Cahill West grew up in Westbury and graduated from Westbury High School. Her sister and family still live in Westbury. It is amazing how many people in Houston have a connection to Westbury.

Commercial ♦ Residential ♦ Auto Glass

## DISTINCTIVE GLASS

Phone: (713)981-0200

Fax: (713)981-4193

Email: dist@clear.net

9541 Town Park Dr.

Houston, TX 77036

[www.distinctiveglassonline.com](http://www.distinctiveglassonline.com)

# Plumbco 713-725-5025

MPL 36609

**For all your plumbing installations and repairs.**

**Gary Bloch • [www.PlumbcoHouston.com](http://www.PlumbcoHouston.com)**

# Free Market Analysis

If you are thinking of selling your home or want to know the market value of your property, call **Larry Mercer** for a free Market Analysis.

## 713-826-7274

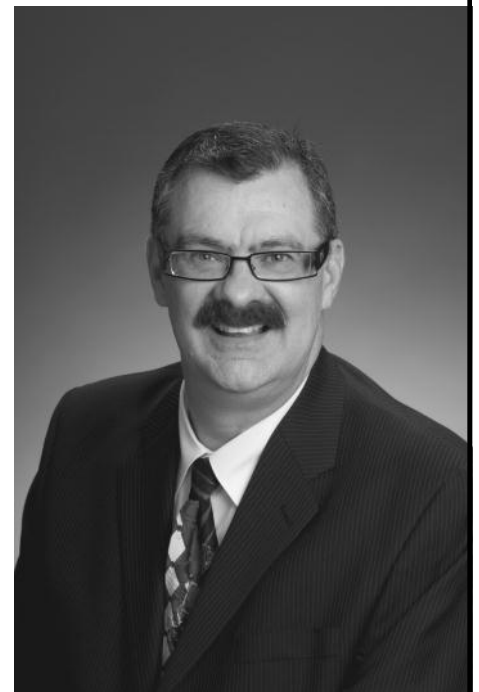
With 30 years of experience in the Houston real estate market, he will get the job done.

You may contact me by email at:

**Lmercer@flash.net**

Or visit my web site at:

**www.Larrymercer.net**



Neighborhood  
Specialist

# Dues Form

## 2012 Westbury Civic Club Dues

**\*Please send  
this form in with  
your  
payment**

Name(s) \_\_\_\_\_  
 Address \_\_\_\_\_  
 Home Phone \_\_\_\_\_ Work \_\_\_\_\_ Cell \_\_\_\_\_  
 E-mail \_\_\_\_\_

## Thank You Westbury!

We greatly appreciate the residents who used the past *CRIER* issues to submit their 2012 dues.

We have reached our 2012 WAP goal!  
 Can you continue to help raise money to get an extra deputy?

**Make checks payable to:  
 Westbury Civic Club, Inc.  
 Mail to:  
 P.O. Box 975182  
 Dallas, TX 75397-5182  
 Online payment:  
 paypal.com—Send Money to  
 westburycc@sbcglobal.net  
 Make sure to include your  
 address or account number**

Westbury Civic Club Membership	\$40	\$
Greenspace Beautification	\$25	\$
Westbury Area Patrol	\$230	\$
<b>Subtotal</b>	<b>\$295</b>	<b>\$</b>
<b>Additional Contributions:</b>		
Westbury Civic Club		\$
Greenspace Beautification		\$
Westbury Area Patrol		\$
Westbury HPD Storefront		\$
<b>Total</b>		<b>\$</b>

Sending multiple payments?  
 Circle your payment choice  
 2 payment of \$147.50  
 3 payments of 98.34  
 \*\*Call the office for more payment options or questions

**2013  
 Assessments  
 and Dues  
 statements  
 are coming  
 soon!**

[WWW.WESTBURYCRIER.COM](http://WWW.WESTBURYCRIER.COM)

**Dick n' Sons**  
 Floor Covering Center

All Major Credit Cards Accepted  
 M-F 8:00-5:00  
 THURS. 8:00-7:00  
 SAT. 10:00-4:00

**713.981.1900**  
 6240 Bissonnet @ Hillcroft  
[www.dicknsons.com](http://www.dicknsons.com)

Purchase any carpet and your First Annual Cleaning is Absolutely Free!

**CARPET LAMINATE WOOD CERAMIC TILE VINYL!**  
 THERE'S JUST SOMETHING SPECIAL ABOUT A  
 NEIGHBORHOOD FLOOR COVERING STORE....COME SEE WHY.  
 SERVING WESTBURY FOR OVER 40 YEARS!



Mention this ad and receive 15% off any Cleaning Services

Water Heaters:  
 Regular & Tankless  
 Disposals  
 Water Lines  
 Gas Lines  
 Drain Cleaning  
 Under Slab Repairs  
 Re-route kitchen & laundry pipes

## ASTRO PLUMBING

Full Service Plumbing and Repair Specialist

**713-256-0017**

**JOHNNY LEWIS**

WESTBURY RESIDENT

New Sewer Lines  
 Hydrostatic Testing  
 Remodeling & Repairs  
 Sinks  
 Faucets  
 New Drains under Bathroom

M16312 ★ Since 1985

★ Senior Discounts

★ All Major Credit Cards

★ Fully Insured

# Crime/Security

## Crime Statistics for Westbury Super Neighborhood 37\* 30 days preceding November 15, 2012

	Single-Family Home	Apt/Condo	Commercial Property	Public Areas	Totals
Burglary	4	3	0	0	7
Theft	10	3	6	2	21
Auto Theft	5	4	1	0	10
Robbery	4	0	1	1	6
Assault	1	1	1	0	3
Rape	0	0	0	0	0
Murder	0	0	0	0	0
<b>TOTAL</b>	<b>24</b>	<b>11</b>	<b>9</b>	<b>3</b>	<b>47</b>

\*Area bounded by: S. Post Oak, US 90/S. Main, utility easement north of Willowbend and drainage bayou, west of Braewick

### Single Family Residential Crime Locations (30 days preceding 11/15/12)

5600	Arboles	Theft
12300	Ashcroft	Robbery
12600	Ashcroft	Auto Theft
6000	Beaudry	Robbery
5700	Belrose	Theft
5800	Belrose	Theft
5500	Briarbend	Theft
10600	Burdine	Burglary
12200	Chimney Rock	Assault
5900	Dellfern	Burglary
12300	Dunlap	Burglary
5800	Effingham	Auto theft
11200	Endicott	Theft
5100	Kingfisher	Theft
5100	Kingfisher	Auto Theft
12200	Landsdowne	Robbery
12400	Landsdowne	Auto Theft
10900	Rampart	Auto Theft
5500	Redstart	Theft
5300	Stillbrooke	Burglary
5800	W. Airport	Theft
5900	W. Belfort (x2)	Theft
5500	Willowbend	Robbery

## Westbury Security Tips/News

The holidays are once again upon us and if you have travel plans, be sure to register with the WAP vacation watch program. According to the weekly reports that we receive from the constables, they DO drive by the homes of Westbury residents ,who have registered, multiple times each day. It also might be a good idea to tell a neighbor or two when you will be out of town so they also can keep an eye on your property. If we look out for each other and continue to report anything/anyone suspicious, we can all continue to make Westbury a safer place to live.

Harris County Attorney Vince Ryan has obtained a court injunction against seven members of the Crips and the Bloods gangs, which orders them to stay out of a "Brays Oaks Safety Zone" established near Tinsley Elementary School and the Albury Head Start School. If the seven members violate the court order, then they can be arrested and fined or jailed up to a year. Additionally, two convenience stores located in the safety zone were ordered to improve security (lighting improvements, security guards) and to stop selling items related to drug use. Although this safety zone is not located in Westbury, some of our students are zoned to Tinsley.

Meyerland has recently posted some techniques used successfully by several of their residents who were approached outdoors, at different locations, by a group of men in a vehicle asking for money. The men damaged property if they did not get any money, and were later arrested by HPD in another neighborhood.

**Person 1** - Ran inside house, locked the door, and called 911.

**Person 2** - Ran in OPPOSITE direction from that of the vehicle to avoid pursuit. Reported the incident to the constables.

**Person 3** - Still had car keys in hand. Pushed car alarm panic button to startle the criminal, then got to safety behind a closed door. Reported the incident.

Call 911 for emergency situations or if you feel in imminent danger. Call the constables at 281-463-6666 to report suspicious activity or to report incidents which have already occurred. Please REPORT these types of crimes, so that the police are on alert to apprehend the criminals and so that the crime statistics reflect the actual number of crimes being committed.



### Home Remodeling & Repair

**713.825.2486**  
[www.hillhomeimprovement.com](http://www.hillhomeimprovement.com)



Bathroom Remodeling  
Interior/Ext. Painting  
Carpentry & Drywall  
Decks & Fences  
Patio Covers  
Siding  
Handyman Service

**Bonded & Insured**

Great References  
Great Rates

Westbury Resident 

**WAP Constable Dispatch**

**281-463-6666**

# Westbury Residents Make a Difference

## Making a Difference: The Power of One *by Becky Edmondson*

Have you ever wondered if what you do makes a difference? In 2004, Parkwest resident Ann Cahill brought her husband, Mark Sandlin and her brother Danny to a Westbury Civic Club meeting. Her sister had told her that Hillcroft was listed in the 2025 Regional Transportation Plan to be widened to an eight lane elevated highway. Concerned, she brought this information to a WCC meeting. This information was news to the WCC, which then called for volunteers and formed a Transportation Committee led by Mark Walker.

We were introduced to Robin Holzer and her wonderful Citizens Transportation Coalition. Robin suggested holding a public meeting and she asked me to speak about "Westbury's Sense of Place". I had never spoken in public; and I had no idea what was meant by "sense of place". I'd never given much thought to my neighborhood nor where I lived. So I thought about it and realized that I had lived within one block of the Willowbend/Hillcroft intersection for 43 years; first as a child with my parents a block north and then as a homeowner a block south. And despite that closeness to Hillcroft I had never thought of the esplanades as something other than an eyesore that the city didn't mow often enough. So I walked out to Hillcroft at Bankside and was amazed by what I saw - a beautiful grassy median 60 feet wide with an allee of 40 year old Live oaks. It was beautiful and an asset worth saving.

And what about Westbury's "sense of place"? I learned Westbury was: one of the earliest suburban subdivisions in Houston, developed in the late 1950s around a unique town square concept; one of the largest subdivisions in Houston with almost 5,000 homes and 7 miles of esplanades; a neighborhood of homes fortunate to have parks and churches

and fine schools. A meeting was held in the auditorium of Westbury High School and hundreds of residents attended and became engaged. The Westbury Garden Club formed about this time; the Green Team was born; the Working on Westbury campaign began. Thousands of free trees have been given to residents and planted in our parks and on our esplanades; the Westbury Community garden formed; we lobbied for recycling and then for single stream recycling. Westbury or a Westbury resident has been awarded a Keep Houston Beautiful award almost every year since 2005. We became a recognized SuperNeighborhood. We became civically engaged in a more proactive way than we had ever been before.

What would have happened if Ann and Mark had not come to that meeting? Who's to say? But I believe that when you look around Westbury today we owe Ann and her sister a great big thank you.

You might wonder why this eight year old story is on my mind. Ann's sister, Jane Cahill West, is leading the charge to amend the proposed revisions to the Houston Development rules (Chapter 42) BEFORE it is implemented between the 610 Loop to Beltway 8.

Look for the rest of the story about Chapter 42 on page 10. It's such a small world!



Our beautiful Hillcroft esplanade!



**WHEN YOU WANT THE JOB DONE RIGHT THE FIRST TIME!**

Since 1975

**American SERVICES**

With Exclusive



Technology

**Call Now:**

**713-782-2989**

**Leak Detection Experts**



**WWW.ASAMERICAN.COM**

Hello My Name is

**ROBERT**

**FOUNDATION REPAIR**



**PLUMBING SPECIALIST**

- ❖ Exclusive Ameri-Link System
- ❖ Lifetime Transferable Warranty
- ❖ FHA/VA Approved
- ❖ Licensed & Fully Insured
- ❖ Warranties Available on Existing Piers



- ❖ City Permits & Inspections
- ❖ Hydrostatic Testing
- ❖ Sewer Reroutes
- ❖ Tunneling Experts
- ❖ Leak Detections
- ❖ Gas Leaks & Repair



**"CALL TODAY SO I CAN GIVE YOU AN HONEST FREE ESTIMATE"**

**SAVE \$100.00 OR 5% OFF ANY FOUNDATION REPAIR OR CONCRETE WORK**  
**NOT VALID WITH ANY OTHER OFFER NEW CUSTOMER ONLY**  
PRESENT AT TIME OF SERVICE

**Gold Star Member**  
 MPL - 15997  
**BLUEPRINTS & DESIGN**

**SAVE \$50.00 OR 5% OFF ANY FOUNDATION REPAIR**  
**Call Today (713) 782-2989**  
**NOT VALID WITH ANY OTHER OFFER NEW CUSTOMER ONLY**  
PRESENT AT TIME OF SERVICE

**CONCRETE WORK** Driveways, Patios, Etc....



# Westbury Area Schools

## Area School Updates

Every month, the principals of the local area schools are invited to attend the WAIC/ SuperNeighborhood #37 meeting. Most do, if their schedules allow. This partnership with our neighborhood schools is very important. The following information was received at the meeting directly from the school representatives in attendance.

**Westbury High School (WHS):** The Rebels football team participated in the state 5A football playoffs in November for the first time since WHS moved back up to 5A competition in 2010. Congratulations, WHS! Unfortunately, WHS lost to Katy HS – a perennial football powerhouse and the top-ranked 5A team in the state.

**Parker Elementary:** Good news - **Zoned** kindergarten students starting at Parker Elementary in the fall of 2013 will no longer have to separately apply to the school's renowned Music Magnet Program. Each year another grade will be added until eventually all zoned Parker students will be automatically accepted into the music magnet program. Please carefully review application requirements for all magnet programs to make sure you understand requirements and deadlines.

Advanced Band and Jazz Band musicians from Parker Elementary have been honored with an invitation to perform at the Crescent City Music Festival in New Orleans in March.

**Westbury Christian School:** The Wildcats football team participated in the state private school TAPS football playoffs in November for the second time since the

## WHS Baseball Team Annual Bowl-A-Thon

The Westbury High School Baseball Players and Booster Club will have their annual Bowl-A-Thon on Sunday, Dec. 2, from 1-4 PM at Palace Bowling Lanes located at 4191 Bellaire Blvd. The cost is \$20 per ticket/person. Price includes 1.25 hrs of bowling and shoe rental. Hot dogs, nachos, drinks and other snacks will also be available for purchase.

All proceeds will go towards replacing aging equipment that has or/ is becoming unsafe for our student athletes to use. Equipment needed include baseball bats, baseballs, batting helmets, protective screens, a new scoreboard and more. WHS Baseball, like so many other athletic programs in HISD, has had a 100% elimination of funds provided by the district. Our program is vital to WHS and to the Westbury area. The baseball program costs about \$5,000 per year to run and be successful. Coaches Dusablon and Lyle maintain the field with some help from the baseball players and their families.

A priority for the WHS Baseball Booster Club is to encourage and teach our young men to be accountable respectful to their school, their peers, adults, their future and the community. Being active and giving back to the Westbury community is an important part of this. Having the community partner with us, through donations and/or personal involvement, is just as important. Come meet the WHS Baseball players, coaches and booster club members and have some fun!

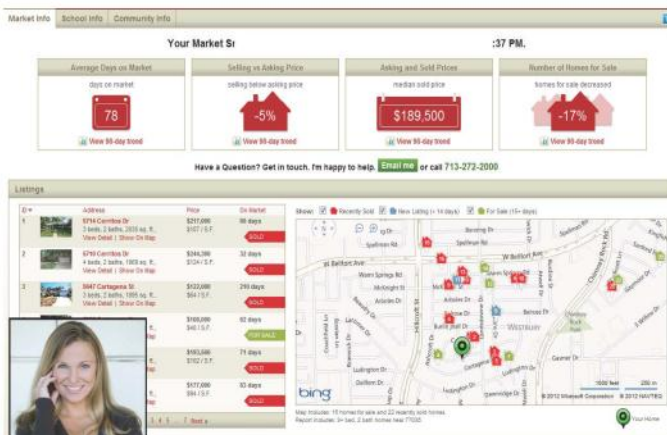
For ticket information, please contact Desiree Slack at 713-444-5188 or at [ddslack@att.net](mailto:ddslack@att.net) *Businesses interested in being a business/corporate sponsor, please request sponsorship information via email. Business/corporate sponsorships begin at \$100.00.*

*Individuals may also request this information for personal sponsorships.*

**GO REBEL BASEBALL!**



## real estate market data FREE & CUSTOMIZED FOR YOU



FREE MARKET SNAPSHOT [www.houstonvalues.com](http://www.houstonvalues.com)  
susan@brockandfoster.com

Find out what your home is worth, see what the house down the street just sold for and learn about neighborhood real estate trends. Visit [www.houstonvalues.com](http://www.houstonvalues.com) to access your FREE customized real estate data report.

Market Snapshot is brought to you by Brock & Foster. Susan Brock is a specialist in Westbury and the surrounding areas. With more than 12 years experience she offers an individualized experience that has earned her a five-star client experience rating. Susan is a licensed broker and REALTOR.®



**BROCK & FOSTER**  
RESIDENTIAL REAL ESTATE  
[www.brockandfoster.com](http://www.brockandfoster.com)

Office: 713-272-2000  
Cell/Text: 713-922-0877  
Twitter: @susanforreal

# What can YOU do to Help the Westbury Community Garden?

## What can you do to help save the Westbury Community Garden?

- 1. SIGN the online petition. Thanks to the 1789 who have signed and left so many uplifting comments!** If you have not already done so, please sign the online petition to Save the Westbury Community Garden (go to Change.org and search for Westbury Garden). Encourage all your friends and relatives to sign the online petition. You do not have to live in Westbury to sign the petition. SIGN if you love community gardens, or SIGN if you want to preserve precious urban greenspace, or SIGN if you hate wasteful federal spending on unnecessary housing. If you don't have online access, then a paper version of the petition is available for signing in the WCC office.
- 2. Think about ways to make this permanent greenspace.** We will need to raise upwards of half a million dollars to purchase the property.
- 3. PLEDGE your financial support to the acquisition of this seven acres.** It may be too early to actually start collecting money, but it is not too early to verbally pledge your support. In fact one resident sent an email pledging a \$10,000 personal donation to help acquire the property. Whether you want to contribute \$5 or \$5,000, see the form on the next page.

### Here is what the WCC and our allies are doing to save the Westbury Community Garden:

1. We continue our political advocacy on behalf of the garden. Several city councilmembers have already visited the garden and endorse preserving it: CMs Larry Green, Steven Costello, Andrew Burks, and Jack Christie. State Representative Borris Miles supports our garden and urban gardening.
2. We continue to publicize the topic, as illustrated by several front page articles in the local weekly "Southwest News"
3. The garden leadership team operates the garden with an optimistic view of the future and continues to develop a master plan for the property.
4. The board of the Brays Oaks Management District has been formally requested to keep this 7-acre property in the BOMD Parks Master Plan and to seek funds to purchase the property in the near future.

[WWW.WESTBURYCOMMUNITYGARDEN.ORG](http://WWW.WESTBURYCOMMUNITYGARDEN.ORG)

The Houston Housing Authority's corporate promise is "to effect positive change in lives and communities citywide ... while changing ... communities for the better."

**Neither the proposed acquisition of the Hillcroft property nor the building of a housing project is in the best interest of Westbury. The WCC passed a motion to oppose the building of the proposed affordable housing project on the site of the Westbury Community Garden. The reasons for our opposition are:**

- The building site is adjacent to an existing low income apartment complex of 940 units at a reported occupancy rate of 60%. The need for more inventory is non-existent as there are over 100 complexes with over 23,000 units with thousands of vacancies in the area. We reaffirm our position of no new apartments and instead encourage the rehabilitation of existing stock.
- Due to its proximity to the large low income apartment complex this would only serve to further concentrate poverty in an area with little in the way of services.
- For the thirty years that the HHA has owned this property it has been park space and is now the site of perhaps the largest, most successful community garden in Houston that has won both local and national awards. It is important to preserve green space.
- The Hillcroft property listed for acquisition is main thoroughfare frontage on Hillcroft and is prime for real retail development. We need stores, not more housing units. This area is a food desert.



**LEGACY ROOFING**  
& exteriors

- FULLY INSURED
- FREE ESTIMATES
- NEW ROOF & REPAIRS
- SIDING
- ATTIC INSULATION
- 5 YEAR WARRANTY

**713-819-5537** [www.legacyroofers.com](http://www.legacyroofers.com)

**YOU ALREADY RECYCLE.  
GET REWARDED FOR IT.**



Earn discounts and deals to local restaurants, businesses, and more! Register at [Recyclebank.com](http://Recyclebank.com) today, and get rewarded for recycling.

**Recyclebank**



# Westbury Community Garden

## End of Year Appeal

As readers of the *Crier* know, 2012 has been a big year for the Westbury Community Garden (WCG). True to our slogan of "Growing Community through Gardening", we've continued to cultivate and develop our 7-acre site as well as our outreach and education programs. In recognition of these efforts, particularly our work with at-risk youth, the Garden received a 2012 "Community Star" award from the Mayor's Office of Public Safety and the federal Drug Enforcement Agency.

Despite the challenges faced from the Houston Housing Authority, the WCG continues to flourish. Our fruit, vegetables, and flowers continue to grow, and our enthusiasm for gardening, outreach, and education grows along with them. The WCG has been touched by the outpouring of friendship and support that we've received from the community in recent months. As you consider your end of year charitable contributions, we'd ask that you consider extending your friendship to include financial support for the garden. We want to increase our capacity next year for families learning to grow food sustainably. Your support will help this and all our efforts that enrich the neighborhood.

Donations are tax-deductable and can be sent to the Westbury Civic Club Office at **5322 W. Bellfort, Suite 107, Houston, TX 77035**. Checks should be made payable to: **WAIC-WGC. Make a notation in the memo line - Westbury Community Garden.**

### BEFORE the Community Garden....



### AFTER the Community Garden....



Stay updated through the WCC website, [www.westburycrier.com](http://www.westburycrier.com) or the WCC Facebook page, Westbury Houston.

Check our the WCG website also at [www.westburycommunitygarden.org](http://www.westburycommunitygarden.org)

## Help Support the Westbury Community Garden

Attached is my tax-deductible donation of \$ _____	Donations of any amount (small or large) are welcomed and appreciated!	
Name:		
<b>GIVING CATEGORIES</b>		
Address:	Friend of the Garden	\$50
	Contributor to the Garden	\$100
Mailing Address for Donation receipt (if different)	Sustainer of the Garden	\$250
	Sponsor of the Garden	\$500
	Steward of the Garden	\$1000+
<p>Checks should be made payable to <b>WAIC – WGC.</b>                  Send donations to the Westbury Civic Club,                  5322 W. Bellfort St., Suite 107, Houston, TX 77035</p>		

**Happy Holidays from the  
Westbury Community Garden!**



**FARMERS**

***One stop for all your insurance needs***

***Auto-Home-Life-Renters-Condo-Boat-RV***

***Flood-Motorcycle-Business***

**Peter Zografos, Agent**

5322 W. Bellfort #206

**(713) 877- 8811**

[pzografos@farmersagent.com](mailto:pzografos@farmersagent.com)

[www.farmersagent.com/pzografos](http://www.farmersagent.com/pzografos)



**GRASS CUTTING AS  
LOW AS \$20**

**(281)995-0179**

**Westbury Lawn Maintenance**

# Westbury Awards

## Westbury Community Garden Wins Another Award!

We announced in last month's *Crier* that the mayor's office had chosen the Westbury Community Garden as a winner of the 2012 Community Stars Award. Only three awards were handed out on November 8 at the Office of the DEA. Clear Channel Communications sponsored the awards and a billboard honoring the Westbury Community Garden will be erected at Edgebrook and Hwy 3.

The Westbury Community Garden was presented with a Certificate of Recognition from City Councilmember Larry Green, District K.

Right: WCC Vice President Marcia Hartman, WCC gardener Wayne Slaikeu, WCC President Becky Edmondson, Westbury Community Garden Co-President Dita Geary, and WCC Director of Community Relations Cindy Chapman



Top: Barbara Hite, District K Community Liaison and Becky Edmondson, WCC President with members of the DEAs office and Mayor's office



## Westbury Resident Wins Mayor's Proud Partner Award

Westbury volunteer Hazel Potvin was honored at a Keep Houston Beautiful luncheon on October 29, 2012 with an individual award as a "Mayor's Proud Partner" for her outstanding volunteer efforts – working with the young, beautification projects, and advocacy for the Platou Community Center. Only a few people each year are honored with an individual award. **Congratulations, Hazel!**



**Get a Jump on Springtime!**

*~no job is too big OR too small~*

**BMH CONSTRUCTION**

[www.roofsremodelsrepairs.com](http://www.roofsremodelsrepairs.com)

**10% off labor (up to \$300)**

**832-867-4031**

**Insured-All Work Guaranteed  
Free Estimates-Affordable!!**

**exterior/interior paint-kitchens  
baths-roofs-driveways-tile work  
patios-sheetrock repairs**



*~westbury resident for 20 years~*

**Vonnie Cobb Realtors, Inc.**



*Your  
Neighborhood  
Realtor for  
40 Years!*

Family owned and operated.  
Pictured Vonnie Cobb and  
Shannon Cobb.

**Call us today for your  
FREE Market Analysis!  
713.664.1818**



*Professionalism with a Personal Touch*

[www.VonnieCobbRealtors.com](http://www.VonnieCobbRealtors.com) • 4842 Beechnut • Houston, Texas 77096

# New Signs and Visitors at the Community Garden

## US Congressman Al Green Visits the Garden



Thank you to all the Westbury residents who wrote Congressman Al Green asking him for his support for the Westbury Community Garden. WCC President Becky Edmondson and WCC Community Relations Director Cindy Chapman obtained a meeting with the Congressman at his office. After hearing Becky and Cindy speak so passionately about the garden, the Congressman rearranged his schedule and drove to the Garden to see it for himself.

Congressman Al Green was very impressed with the garden, as is everyone who visits the garden for the first time! The Congressman was also impressed with the amount of community involvement that goes into the Westbury Community Garden.



## “At Large” City Councilmember Bradford Visits the Westbury Community Garden

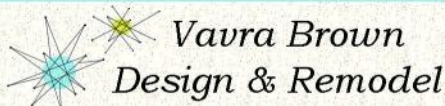


At-Large City Councilmember “Brad” Bradford toured the Westbury Community Garden in November with, from left, Joe Niles (Parkwest 3 Section Director), Cindy Chapman (WCC - Community Relations), Becky Edmondson (WCC President). Joe Niles has been persistently advocating for the garden.

## New Signs Made by MOCHA Installed at the Westbury Community Garden



WCC Members unload the new signs: Ross Asher, Diane King, Tom Gwillim, and Kathy Elder



Vavra Brown  
Design & Remodel

713.256.4048

Vavra-Brown-Design.com

Full Warranty \* Local Business/Resident

Full Home Remodeling  
Custom Kitchen & Bath  
Custom Cabinets, Built-ins  
Roof, Siding, Windows, Doors  
Electrical Upgrades & Repair  
Lowest Plumbing Rates Around!

\* WE BUY HOUSES \*



# Backyard Composting Class @ WCG

## What I Learned at the Composting Class: My 1st Visit to the Community Garden

by Pam Schertz, WCC Treasurer

In order to be a better you, learning must always be present in your life. I learned how to make backyard compost one Saturday at the Westbury Garden in a class presented by Urban Harvest through Leisure Learning and taught by Jeanie Dunnihoo (Master Gardener).

It was a beautiful morning to have a class in the garden. The wind was blowing and the sun wasn't very hot. I am ashamed to say it was my first time to actually step foot in the garden, but it didn't take long for me to realize how beautiful the garden is and how important it is to our community.

Jeanie spoke to us briefly about all the wonderful organisms that grow in our soils and compost. She taught us the best way to get compost to decompose faster was to cut up our brown contributions such as leaves, dried plants, straw, hay, fireplace ash, dried grass and even newspaper. The newspaper was a surprise to me. What better way to prevent fraud than to throw your papers into your compost pile. Obviously, you would not want to use magazine paper as it will not compost fast because it has wax on it. To expedite cutting up materials, simply run a lawnmower over large leaves and other brown matter.

The green contributions to use for compost would be coffee and tea grounds, fresh leaves, green plants, flowers, and vegetable scrapes. You can also add horse manure to the compost, if you have access to any. Horses have an enzyme in their digestive systems that helps the good organisms in the compost pile thrive.

In Houston it is better to put your compost pile in the shade if possible. Yes, you want it to be hot but too much sun can also kill the organisms that compost the materials. Therefore, you should also cover the compost pile and shield it from the sun with old screening or garden fabric.

Whatever you do, never put compost or mulch against a tree trunk. You should put it around the tree so that the compost will absorb into the soil and not damage the trunk or stem of the tree or plant. You want to mix the compost with your soil rather than layer it on top. You mix it with the soil because you want the benefits of the compost to sink into the ground instead of evaporating into the air.

Jeannie took us to the Westbury Community Garden compost area and we made a compost pile together. She also explained to us the different compost bins the garden has set up and the purpose for each bin.

There were people who attended the class from as far away as Clear Lake. I am not sure if I would have taken the class if it weren't so close to my neighborhood. I hope to attend more classes in the garden!



## Urban Harvest Farmer's Markets

**Wednesdays 11AM-1:30PM:** City Hall  
Farmer's Market, 901 Bagby

**Saturdays 8AM-Noon:** Eastside  
Farmer's Market, 3100 Richmond

**Sundays 10AM-1PM:** Highland Village  
2720 Suffolk Dr.

**ALL TYPES IRRIGATION, INC.**

OVER 30 YEARS EXPERIENCE  
Design • Drainage • Installation • Service  
Commercial • Residential

**Emil Becker**  
T.I.L. #4415  
D.L. #126891

Office: (713) 726-1636  
Fax: (713) 726-8322  
Cell: (713) 819-2872

**Hunter Preferred Contractor**

**"Take an Hour of Your Time  
to Change Your Life!"**

Every Tuesday Night @ 7pm

RSVP: 713 728 2300  
Careers@waynemurray.net

Ask about our next career night webinar!

**Weichert Realtors**  
Wayne Murray Properties

Each Location Independently Owned and Operated

**LEADING REAL ESTATE COMPANIES OF THE WORLD**

# Willow Waterhole Upcoming Events

## Sunday Music in the Park Success!

On November 4, choir students from Westbury Christian School (WCS) performed a variety of up-tempo songs at the South Gazebo at Willow Waterhole. Red Riding Hood and the Wolf (WCS musical theater students) sang selections from the musical "Into the Woods". Over 50 people enjoyed the beautiful weather. Stay tuned to future *Criers* for more exciting musical events next year at the Willow Waterhole.



Top: Westbury Christian Choir performs in front of crowd.

Left: Red Riding Hood Musical performance by theater students from Westbury Christian

**Audubon Society Bird Survey  
CANCELLED IN DECEMBER**

**WWW.WWGC.ORG**

713.960.6222



MEYERLAND

WINDOWS & DOORS

CALL FOR A  
FREE ESTIMATE  
TODAY!

MIKE@MEYERLANDWINDOWS.COM  
MEYERLANDWINDOWS.COM




## Upcoming Events at Willow Waterhole Conservation Reserve

There are no planned activities for December at the Willow Waterhole other. We encourage you to enjoy this great outdoor space with your families during the holiday season.

Looking for somewhere to take all the kids? Come let them explore the Willow Waterhole. Bring a picnic lunch to the gazebo or Stonehenge (circle of boulders located off Ricecrest). Bring the wagon. Take a nature walk. See big machines at work (excavators, diggers, etc.)

Activities are presented by the Willow Waterhole Greenspace Conservancy and sponsored by the Brays Oaks Management District. For more information about location or parking, refer to the website [www.wwgc.org](http://www.wwgc.org) or the WWGC Facebook page.

Sponsored By:



Presented By:




Bayou City Fencing Academy

4997 W. Bellfort

Fencing Instruction

Youth & Adults  
\*Ages 7-18



\*All Skill Levels

Bayou City Fencing Academy  
832-338-9808  
[myfencingacademy.com](http://myfencingacademy.com)

# Neighborhood and Area News

## Corral the Grease: Reducing Sewer Problems

The holiday season is here and that means spending a lot of time in the kitchen. But one common mistake many cooks make could be costly. Pouring cooking grease, fats and oils down the drain, toilets or sinks could have you spending time with a plumber instead of your family. Animal fats, greases, and vegetable oils poured into drains will solidify. Cooking grease can get as hard as concrete, causing sewage to back-up and overflow into streets, yards and storm ditches. Take a minute to properly dispose of grease or other items that can clog your plumbing. **\*DO NOT POUR** grease products down sinks or toilets.

\*Pour liquid oils and grease into heat resistant bags or containers (used coffee cans, used pet food cans, used food jars, oven roasting bags, or foil lined bags).

\*After the collected grease is cool, then seal and throw away the bag or container with your trash.

\*Scrape fats, grease and food from plates and cooking utensils into the trash, not down the drain.

\*Use basket strainers in sinks to catch food particles and empty them into the trash

\*Remember, garbage disposals are not effective for disposing of fats, oils and greases. The grease will congeal when it contacts cooler water.

## Remodeling your home? Adding On?

**Remember, please let the Westbury Civic Club office look over your proposed plans before you start construction.** We want to avoid deed restriction violations before they happen, and without a doubt you would like to find out before wasting money on construction that later has to be modified or demolished. Obtaining a city construction permit requires your written acknowledgment that the plans comply with your deed restrictions.

## New Street Lights for West Airport

Several years ago the city extended W. Airport by several blocks (east of the Chimney Rock intersection); however, this new stretch of road did not get any street lights. A request to add street lights was submitted to District K Council Member Larry Green. The city reviewed the situation and approved adding 6 street lights along the new section of West Airport as part of the Major Thoroughfare program.

# GO TEXANS!



## Report a Streetlight Outage

CenterPoint Energy maintains streetlights throughout our electric service territory in and around Houston. Use their website listed below to report a streetlight outage. If you do not have access to a computer, you can report street light outages or general power outages by calling 713-207-2222 or toll free 800-332-7143 <http://www.centerpointenergy.com/services/electricity/residential/electricsafety/reportastreetlightoutage/>

You will be asked to provide the following information: pole number of pole you want to report and your contact information.

# JACKIE ZEHL & TERESA LEWIS



**5930 JASON**  
3/2/2  
**\$165,500**



**5638 WARM SPRINGS**  
3/2/2  
**\$177,500**

**713-854-6675**

jackiezehl@coldwellbanker.com



**4430 HAZELTON**  
3/2/2 + STUDY  
**\$324,900**

**713-828-2096**

tlewis.houston@att.net



**9206 CADAWAC**  
3/3/2 + COMPUTER AREA  
**\$198,500**



**6007 MCKNIGHT**  
3/2/2  
**\$219,900**



**10010 VILLA LEA**  
4/3/3 + STUDY  
**\$226,900**

**JUST SOLD!**

**5909 Ariel**  
**5735 Claridge**  
**5803 Cheena**  
**5807 Hummingbird**  
**5638 Valkeith**  
**5714 Burlinghall**

*Westbury Area Homes  
For Sale*



UNITED, REALTORS®

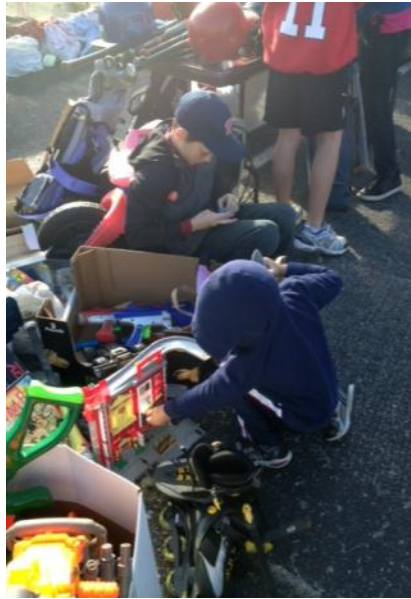
Coldwell Banker,  
United, Realtors  
5111 Bellaire Blvd.

# 2012 Fall White Elephant Sale

## Another Beautiful Morning for Our Community Garage Sale

What a fantastic day for a garage sale! The fall White Elephant community garage sale was held on October 27, with crisp blue skies and perfect temperatures. As usual, bargain shoppers were standing in line avidly awaiting the 8AM gate-opening to our community garage sale. The White Elephant Community Garage Sale is a fun family event and has been a Westbury tradition for many years. We thank Westbury United Methodist Church and St. John's Presbyterian Church for once again allowing us to use their parking lots for this popular event.

Twice each year the Westbury Civic Club sponsors a community garage sale. The WCC provides its residents with these "sales" in the spring and fall since garage sales, estate sales, and yard sales are NOT allowed at Westbury residences.



Pictures taken at the 2012 Fall White Elephant Sale on Oct 27.

**The next White Elephant Community Garage Sale will be held in the Spring of 2013. Look for the date and important info in the February and March *Criers!***



See your child achieve MORE at

## St. Thomas More Parish School

5927 Wigton Dr.  
Houston, Texas 77096

713.729.3434 [www.stthomasmore-school.org](http://www.stthomasmore-school.org)

Preschool Programs (3 & 4 year olds)  
Coeducational Classes (Grades 1 - 8)

All Day Kindergarten Program  
Before/After School Care Available

Give your child all the extras  
Enriched Academics ❖ Strong Athletics ❖ Introduction to the Fine Arts

**LIMITED OPENINGS**

Call **NOW** to arrange a private tour of our campus - 713.729.3434



\* Westbury/Parkwest Specialist! \*

32 yr  
Westbury  
Resident



Buy  
Sell  
Lease

**Tony and Charley Porcarello**

*"Who Better to Sell or Lease YOUR Home than  
YOUR Westbury Neighbor!"*

Tony: 713-898-1546 [tporcarello@yahoo.com](mailto:tporcarello@yahoo.com)

Charley: 713-898-1484 [charlsev@swbell.net](mailto:charlsev@swbell.net)

Office Direct Line: 713-349-7263

Your Perfect Partner



Visit us on the Web @ [www.porcarello.com](http://www.porcarello.com)

# ASTRO PLUMBING

"YOUR PROFESSIONAL PLUMBER"

BEST PRICES • FREE ESTIMATES • SENIOR DISCOUNT

**CALL JOHNNY**  
Cell: 713-256-0017

JOHN LEWIS  
M16312

ALL MAJOR CREDIT  
CARDS ACCEPTED

## DAVID J. CROWLEY ATTORNEY AT LAW

Wills

Probate

Juvenile Law

P.O. BOX 310218  
HOUSTON, TEXAS 77231

**713-721-2300**

PROUDLY SERVING WESTBURY FOR 35 YEARS



Legal Eagle  
CONTRACTORS  
**REMODELING**  
Since 1974

[www.legaleaglecontractors.com](http://www.legaleaglecontractors.com)

Houston's **Most Trusted** Contractors



**Dan Bawden, Master Builder**

**713-723-8850**

Come see our Showroom at  
**5008 Locust Street**  
at South Rice, Bellaire

**Design and Build**  
**Kitchens ★ Baths ★ Additions**

Westbury's favorite  
remodeler for over 25 years!



Senior-focused  
Remodeling  
is our Specialty



# BryanCalvinSmith.com



## Independent Insurance Agents & Brokers of America

**TRAVELERS**

**Safeco** Insurance™

Member of Liberty Mutual Group

# 713-723-9353