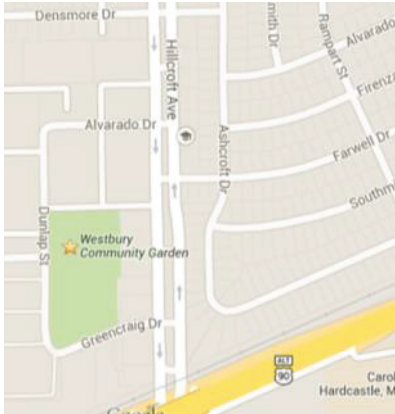




Westbury Crier

VOLUME 59, ISSUE 11

NOVEMBER 2014



Saturday, November 15, 11AM—2PM
12581 Dunlap (see directions to left)

FREE Activities include:

- *garden tours
- *scarecrow contest
- *games with vegetables and fruits
- *face painting
- *ring toss
- *educational booths about soil science, weed identification and composting

WHERE IS THE GARDEN?

12581 Dunlap (77035) is off Hillcroft between W. Airport and South Main. Heading south on Hillcroft, turn right onto Greencraig, follow it around the bend where it turns into Dunlap. The large blue roof on the WCG Pavilion is readily visible. Street parking.

IN THIS ISSUE:	
Platou Center and Meyer Library	4
Event/Trash Calendars	5
Westbury Area Schools	6-8
Groups & Activities	9
City/County Services	10
Crime/Security	11
Westbury Area News	12
Election 2014	15
National Night Out	16
Westbury Meetings	17
Willow Waterhole	18
Westbury Green	19
Leaf Cleanup Tips	20
Garage Sale Policy	21
Westbury Commercial	22

UPCOMING EVENTS AT THE WILLOW WATERHOLE
Movie in the Park: November 8
6PM-9PM
 Bring chairs & blankets and enjoy "Maleficent" & free popcorn
For more information, see page 18

Daylight Savings Time Ends
2AM November 2

CALL TO ACTION
Westbury High School
 See page 3
SIGN PETITION - CHANGE.ORG

November 4th
Election Day
 For more information, see page 15
BRING YOUR PHOTO I.D.

TRASH ALERTS 

HOLIDAY SCHEDULE:
 No trash or recycling pick up on Thursday, November 27. Trash & recycling will be picked up on Friday, November 28.

HEAVY TRASH:
 Heavy Trash for **NOVEMBER** is **TREE WASTE ONLY**. Pick-up for ALL of Westbury is **Thursday, NOVEMBER 13**. **DO NOT PLACE TREE WASTE ON CURB UNTIL NOV. 8**


JUNK WASTE: Junk waste pickup is not until **DECEMBER**. Do not put out Junk Waste until **December 6**.

More trash info, see page 5

Coffee With the Constables

The WCC outreach program, "Coffee with the Constables" is back! It allows Westbury residents to meet the constables who provide security in Westbury. The next coffee will be in Westbury 4 at the home of Krista & Scott Patlovich at **10622 Ashcroft** on Thursday, November 13, from 7:30AM to 9AM. Stop by and say hello!

Thurs., November 13 @ 7:30AM



Westbury Civic Club Board of Directors

President	Becky Edmondson	wccpresident@westburycrier.com
Vice President	Marcia Hartman	wccvp@westburycrier.com
Secretary	Mark Knoblauch	
Treasurer	VACANT	

Directors at Large

Communications	Libby Mondello	
Community Relations	Cindy Chapman	wcccommunityrelations@westburycrier.com
Deed Restrictions	Jennifer Edmondson	wccoffice@westburycrier.com
Flood Control & Infrastructure	Jeff Benavides	
Greenspace Beautification	Carlos Mata	
Membership	Kate Wilson	
Security	Leslee Cross	wccsecurity@westburycrier.com
Volunteer Coordinator	Stephanie Lester	westburystephanie@gmail.com

Section Directors

Westbury 1	VACANT	
Westbury 2	Rocio Lara	
Westbury 3	Robert Montgomery	rmontgomery002@comcast.net
Westbury 3	Charlsey Porcarello	charlsey@swbell.net
Westbury 4	Eugene Sirls	
Westbury 4	Amanda Bess	
Westbury 5	Virginia Livingston	Westbury5E@westburycrier.com
Westbury 5	Heath Campbell	
Westbury South	Robert Capps	
Parkwest 1	William Grimsinger	
Parkwest 2	Jeffrey Weiss	jhweiss@yahoo.com
Parkwest 3	Joe Niles	Parkwest3@westburycrier.com

Westbury Civic Club Office

Office Hours: Monday—Thursday 9:30AM-1:30PM*, Closed Fridays

Address: 5322 W Bellfort Ste. 107 Houston, TX 77035

Phone: 713-723-5437 **Office Manager:** Jennifer Edmondson

Email: Westburycc@sbcglobal.net

*The office is closed on all major holidays, weekends (follows HISD calendar)
NOTARY SERVICE IS AVAILABLE TO ALL WESTBURY RESIDENTS during office hours or by appointment

WWW.WESTBURYCRIER.COM

USEFUL PHONE NUMBERS

Westbury Area Patrol Constable Dispatch
281-463-6666

HPD Non-Emergency
 713-884-3131

Power Outages (Centerpoint)
 713-207-2222

Westbury HPD Storefront
 713-726-7126

Platou Community Center
 713-726-7107

Poison Control
 1-800-764-7661

Street Light Repairs (Give pole number)
 713-207-2222

District K Councilmember Larry Green
832-393-3016

District C Councilmember Ellen Cohen
 832-393-3004

County Commissioner El Franco Lee
 713-755-6111

Deed Restriction Enforcement (City Legal)
 832-393-6333

City of Houston 311 Hotline (for all Non-Emergency Issues)

Forestry Department
 Graffiti

Hazardous Waste Disposal
 Heavy Trash

Neighborhood Protection
 Parking Management

Recycling

School Crossing Light Repairs

Water and Sewer Repair

Stay connected!

Are you one of the 1,165 likes on
 our Facebook page,
 Westbury Houston?

NEWSLETTER INFORMATION

Published by: Westbury Civic Club, Inc

Editor-in-chief: Jennifer Edmondson

Edited by: WCC Publication Committee

Advertising: Call 713-723-5437 or email
 westburycc@sbcglobal.net

Ad Disclaimer: The WCC neither represents nor endorses any advertisement in the newsletter. Perform your own due diligence before contacting any advertiser.

© Copyright WCC 2014 , All Rights Reserved

President's Message

October was a month full of wonderful events, some of which are still to come as the Crier goes to print before the month ends! November has its share of upcoming events from a movie night at the Willow Waterhole to a Fall Festival of Thanks at the Westbury Community garden.

We have so many things to be thankful for as a neighborhood this year: the saving of the Westbury Community Garden; the partial demolition of Westbury Square; positive news on the Centerette property; fewer residential problem properties; our Harris County Flood Control channels scheduled for desilting; water line replacement in Westbury 5 and on Oasis; new sidewalks near Anderson; street resurfacing in parts of Westbury 1, 2 and 3; our sewers being evaluated throughout the neighborhood; and a pre-engineering study by Public Works requested in the areas that have had structural flooding. We appreciate all of these things that were made possible by the City of Houston and Harris County Flood Control. The Westbury Civic Club board and office work with the city and county to bring needed improvements to Westbury.

We are thankful that improvements to Westbury High School (WHS) were included in the 2012 bond. There is so much

potential to make Westbury High School our neighborhood school of choice. According to HISD statistics for 2013 of the 4,335 students zoned to Westbury only 1,859 choose to attend there. I think that is a shocking statistic. HISD has the opportunity to create an incredible 21st century school situated adjacent to the 300 acre Willow Waterhole. With the Levitt Pavilion coming to the Willow Waterhole, WHS will have a professional stage and venue for up to 5,000 people. Think of what this could mean to the Fine Arts department. HISD has acquired two of the 4 apartment complexes to the east that they committed to purchase and we feel it is of paramount importance that this land be acquired to complete the expansion of the campus and associated sports facility. Won't you join us in telling HISD that we as a community want Westbury High school to be the best that it can be?

A petition on change.org will be available when you receive the Crier. A link will be on Facebook, our website and distributed by other social media. Let's show HISD how important Westbury High School is to us!

I am thankful for so many good things going on in and around our neighborhood.

This means there are a lot of meetings to attend and some are recapped on page 17. Maybe one of them will spark an interest with you and you will join us as we work together to make Westbury wonderful!

It's a good time to live in Houston; it's a good time to live in Westbury. Please remember to vote on November 4th. Your vote really does make a difference.

Look for the petition for Westbury High School and sign it for a better future.

Wishing all of you a very Happy Thanksgiving!
May the Thanksgiving holiday bring you good things in abundance that stay with you all year long.

Becky Edmondson



Happy Thanksgiving!

Board Notes— October 2014

- New Constable, Sgt. Troy Morin, gave a security update.
- Several candidates for the vacant Treasurer position spoke about their qualifications and were asked to provide a written list of qualifications for review and consideration by the board.
- The board discussed the upcoming hearing for the Southern Crushed Concrete environmental permit application, the upcoming variance hearing for the "Westbury Centerette" property and a proposed Neighborhood Matching Grant Program application to the city for an esplanade beautification project.
- The board approved the September meeting minutes and 3 resolutions (variance hearing, Neighborhood Matching Grant Program, and reconstruction of Gasmer.) See wording to the right.
- The board approved a motion for Amanda Bess to fill a vacant position for Director of Westbury 4.
- Thank you to Jackie Murray of Weichert Realtors for providing cookies and water.

Westbury SuperNeighborhood 37 Motions

The following motions were approved by both the Westbury Civic Club and the Westbury Area Improvement Corporation on October 15, 2014 during their October board meetings.

1. Neighborhood Matching Grant Program (NMGP)

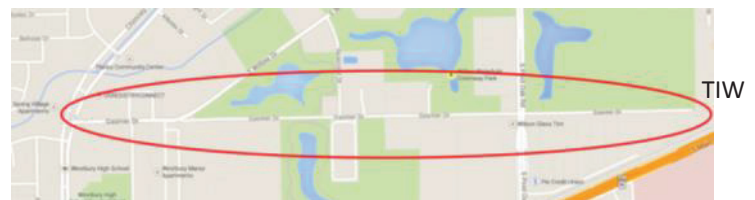
The Westbury SuperNeighborhood 37 supports the NMGP application by the Westbury Civic Club for public beautification efforts and irrigation on Westbury esplanades on Hillcroft near Willowbend.

2. Economic Development

The Westbury SuperNeighborhood 37 does not oppose a variance request by Samantha Fitness for a 10 foot setback on Chimney Rock.

3. Streets

The Westbury SuperNeighborhood 37 supports reconstruction of Gasmer, including sidewalks and closed ditches, from Texas Iron Works (TIW) westward to Chimney Rock.



Platou Community Center

11655 Chimney Rock / Hours: Mon-Thurs 12PM—8PM; Fri 11AM-7PM
Supervisor: Dan Reilly, Daniel.reilly@houstontx.gov or 713-726-7107

STRETCHING EXERCISE CLASS

Monday, Wednesday, Friday from 9-9:45AM

Improve your flexibility by joining this non-strenuous exercise class. No registration required.
Wear comfy clothes.

MSBEEHAVEN QUILTERS

Tuesdays from 10AM to 2PM

For more information, contact Janie at 713-721-5526

GAMES

Wednesdays from 10AM to 12PM

For more information, contact Wally at 713-729-9310

PORTABLE PROJECTS

Thursdays from 10AM to Noon

For more information, contact Genie at 713-470-7969

LINE DANCING

Mondays @ 12:30PM

For more information, contact Dan at 713-726-7107

TOPS: TAKE OFF POUNDS SENSIBLY

A Weight Loss Support Group, Tuesdays, 5:45-7PM

Drop in to preview the program or call Dorothy at 713-723-4441 or Naomi at 713-988-2233

Exercise Instructor Needed

A volunteer is needed to teach a dance or exercise class on either Tuesday, or Thursday evenings between 6-8PM. Call Supervisor Dan Reilly at 713-726-7107 if you are interested.

Ping Pong Table Needed

If you have a used table tennis table to sell or donate, please consider the Platou Center. Call Dan at 713-726-7107

"Games" Space Available

Is there a foursome for bridge? Scrabble anyone? Pinochle? The Wednesday Game Group has space available. Call Wally at 713-729-9310.

After School

Enrichment

Youths, ages 6 through 13, can register for After School

Enrichment which provides guided activities, including time to do homework.

Call Dan Reilly at 713-726-7107 for more information.



EW
Body & Foot Massage

- ✦ Foot Reflexology
- ✦ Body Massage
- ✦ Combination
- ✦ Pain Relief

Tel.: 281-581-8681
832-454-6205
Mon. - Sun.: 10am - 10pm

10539 S. Post Oak Rd.
Houston, TX 77035

Meyer Neighborhood Library

5005 W. Bellfort

Phone: 832-393-1840 / www.houstonlibrary.org

November 2014 Events

Family Story-time : Every
Wed. & Saturday at 10:30 AM

Adult Mystery Book Club

Call the Meyer Library for info regarding the Adult Book Club.

HOURS

Monday: Closed
Tuesday: 10AM-6PM
Wednesday: 10AM-6PM
Thursday: 12PM-8PM
Friday: 1PM-5PM
Saturday: 10AM-5PM
Sunday: Closed

Dick n' Sons

Floor Covering Center

6240 Bissonnet, Houston, Texas 77081

713.981.1900

www.dicknsons.com

Serving Westbury over 40 Years!



Fine Floor Coverings
for Every Budget

**Carpet, Cork, Laminate, Vinyl, Hardwood,
Ceramic Tile & Countertops!**

M-F 8-5 Thurs. 8-7 Sat. 10-4
6 Months No Interest Financing

What's Happening in Westbury

Events & Meetings Calendar November 2014

Sat 1	Rain Date for White Elephant Sale
Sun 2	Daylight Light Savings Ends Set your clocks back one hour
Tues 4	Election Day! VOTE VOTE VOTE
Sat 8	Movie at the Park 6PM - 9PM Willow Waterhole - Gasmer or Dryad See page 18 for more information
Mon 10	Westbury Community Garden Meeting 6:30PM Platou Community Center— 11655 Chimney Rock
Thurs 13	Coffee With the Constables 7:30AM-9AM 10622 Ashcroft in Parkwest 2 See page 1 for more details
Sat 15	Audubon Society Bird Survey 7AM Meet at The Gathering Place parking lot—5310 S. Willow
Mon 17	Brays Bayou Association Meeting 7:30PM The Gathering Place—5310 S. Willow See page 12 for more details
Wed 19	WAIC/Super Neighborhood #37 Meeting—8:30AM Salem Lutheran Church—5030 W Bellfort
Wed 19	WCC Board Meeting 7PM Westbury Baptist Church— Open to ALL Westbury residents
Thurs 20	Hearing for Southern Crushed Concrete See page 23 for more information
Tues 25	SW PIP (Police Positive Interaction Program) Meeting 7PM Aramco Bldg
Wed 26-28	WCC Office Closed

WCC Office Holiday Schedule

Nov. 25: Closed at Noon
Nov. 26 & 27: Closed
Dec. 22-26: Closed
Dec. 31: Closed at Noon
Jan. 1: Closed



SAVE THE DATE

Dec 13—Deck the Halls Parade

City of Houston Heavy Trash Schedule			
September	Tree Waste	November	Tree Waste
October	Junk Waste	December	Junk Waste

RECYCLING AND HEAVY TRASH CALENDAR

November 2014	
Thurs 13	Curbside Recycling All of Westbury
Thurs 13	Heavy Trash- TREE WASTE ONLY ALL OF WESTBURY
THURS 27*	THANKSGIVING NO TRASH OR RECYCLING
FRIDAY 28	Reg. Trash & Curbside Recycling All of Westbury

December 2014	
Thurs 11	Curbside Recycling All of Westbury
Thurs 11	Heavy Trash— JUNK WASTE ALL OF WESTBURY
THURS 25*	CHRISTMAS NO TRASH OR RECYCLING
FRIDAY 26	Reg. Trash & Curbside Recycling All of Westbury

***THERE IS NO TRASH OR RECYCLING PICK UP ON THURSDAY NOVEMBER 27 OR DECEMBER 25. TRASH AND RECYCLING WILL BE PICKED UP ON FRIDAY, NOVEMBER 28 AND DECEMBER 26.**

Important Trash & Recycling Info

- ♻️ Trash cans need to be on curb by 7AM each Thursday
- ♻️ Trash cans must be removed by 10PM each Thursday
- ♻️ Trash cans must be placed at least 3 feet apart
- ♻️ Trash cans must be stored out of sight.
- ♻️ Yard waste **MUST** be in correct biodegradable bags
- ♻️ Heavy trash can be placed starting at 6PM the Friday before pick-up
- ♻️ **YARD WASTE** is not considered tree waste. It is collected on regular Thursday trash day
- ♻️ Call 311 for all trash questions and complaints
- ♻️ Nearby Trash Depositories and Recycling Centers:
SW Trash Depository/Recycling Ctr -10785 SW Frwy
 Hours: Wed.—Sun. 9AM to 6PM; Accepts Junk Waste, Tree Waste & Recyclables.
- ♻️ **Environmental Service Center - 11500 S. Post Oak**
 Hours: Tues/Wed 9AM-3PM; 2nd Sat 9AM-1PM.
 Accepts Hazardous Household & Electronic Waste.
- ♻️ Refer to www.westburycrier.com or www.houstontx.gov for more trash and recycling information

HISD Magnet Awareness Week

HISD Magnet Awareness Week: November 3-7, 2014

Magnet Awareness Week is THE week of the school year when magnet schools across HISD showcase their programs for aspiring student applicants and their parents. HISD offers a large number of Magnet programs. Both Parker Elementary and Johnston Middle School are HISD Magnet Schools and both will be participating in HISD Magnet Awareness Week November 3-7 with multiple tour opportunities and other activities.

Parker Elementary School Magnet Tours

Parker Elementary, an HISD Music Magnet, will be hosting tours of the magnet school. The magnet program offers instruction in Suzuki Strings, Piano, Band, Chorus, Guitar, Studio Music and Music Enrichment. Parker's Suzuki Strings and choral programs have national reputations for excellence and its band program has been recognized throughout the state. Parker performing groups have performed at prestigious events around Houston, the State of Texas, and across the country. The Parker Advanced Chorus has just been invited to perform with the Houston Symphony this May.

Families interested in learning about the wonderful music opportunities available for children in grades K through 5th are invited to attend one of the following information sessions and tours. Tours will be held on:

November 3 at 9 AM and 1 PM, November 4 at 1 PM, November 5 at 9 AM, 1 PM and 6:30 PM, November 6 at 1 PM, and November 7 at 1 PM.

Parker Elementary is located at 10626 Atwell in SW Houston. For questions about Parker Magnet tours, please contact Magnet Coordinator Carol Kehlenbrink at 713-726-2122 or ckehlenb@houstonisd.org.

Johnston Middle School Magnet Tours

Johnston Middle School is a Performing and Visual Arts magnet. It is pleased to offer an award winning performing and visual arts program. The artistic disciplines include: visual arts, band, broadcast journalism, choir, dance, guitar, mariachi, piano, orchestra and theater.

Fifth graders and their parents are invited to come visit Johnston during Magnet Awareness week. There will be Magnet tours on each day at 1PM with small performances and receptions where you can ask questions. On Thursday, Nov. 6th, there will be a Magnet Open House and concert at 6PM. After the concert, parents and students will have the opportunity to visit with different magnet teachers to ask questions. If you have a child entering 6th grade next school year, or have friends who do, please come visit and invite your friends, too, to Johnston Middle School during Magnet Awareness Week.

Johnston Middle School is located at 10410 Manhattan (corner of Wigton and Manhattan). For questions, please contact Gary Leger, JMS Magnet Coordinator, at 713-726-3616.

Starting November 1, magnet applications can be filled out on line. Instructions for online applications are at www.houstonisd.org. The Magnet Application deadline is December 19, 2014.

Parker Elementary PTO's "Open Mic at Family Night"

Parker Elementary will feature talented Parker friends & family musicians of all ages at their annual Family Night on Thursday, November 6, from 5-8 PM in the Parker Cafeteria. A long-standing tradition at Parker, parents, students, and alumni of all ages are invited to take part in "Open Mic Night" to show off their musical talents. If you would like to participate, please email Carol Kehlenbrink, Magnet Coordinator (ckehlenb@houstonisd.org) to reserve a spot.

Come enjoy the music entertainment, have a delicious dinner, and visit with your neighbors. A pasta dinner will be served from 5:30-7:30 PM. There will be a limited number of tickets sold at the door. Please email Kristine Richards (richardskristine@aol.com) to reserve your dinner tickets.

We also invite you to browse our Scholastic Book Fair, which will be open during the event in the mini-gym. Proceeds from the dinner and book fair will benefit the Parker library and PTO activities. All of the details can be found on Parker's website (www.houstonisd.org/parkerelem).



Safe Sidewalk Program

Some sidewalks are being replaced by the City of Houston, in parts of Westbury 4 near Anderson Elementary as part of the Safe Sidewalk to Schools program.

Locally Owned & Operated • Free Estimates
30+ Years of Experience • Honest & Reliable
Bathroom & Kitchen REMODELING

Call 281-850-0795 or visit
www.RemodelingJML.com
for Quotes & Estimates

SERVICES INCLUDE (but not limited to)
All Building Types • Interior & Exterior • Doors • Decks
Stripping • Painting • Staining • Refinishing • Repairs
Fences • Counter Tops • Crown Molding • Flooring
Cabinets • Drywall • Masonry Painting • Hardi Siding



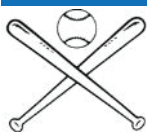
Additional Savings for
Angie's List Customers,
Call for Details!

10% OFF
ANY JOB of \$250
or MORE

Not valid with any other offer.
Must present coupon. Expires 12-10-14.



Westbury Area Schools



WHS Baseball Bowl-A-Thon

The Westbury High School Baseball Booster Club is holding its annual Bowl-A-Thon fundraising event on November 9 and you are invited!

This fun event will take place on Sunday, November 9th, from 3-6 PM at Palace Bowling Lanes located at 4191 Bellaire Blvd., 77025. The cost is \$20 per person and includes 1 hour 20 minutes of bowling and shoe rental. Time options are: Session 1 (3:00-4:20) and Session 2 (4:30-6:00). Concessions, snacks and drinks will be available for sale that day by the Baseball Booster Club.

There are also opportunities for sponsoring the team at several levels. Some levels include a banner with sponsor name/company that is displayed on the baseball field. All donations and sponsorships are tax deductible and you will receive a receipt for your donation.

To purchase tickets, make a donation, or ask general questions, please contact Desiree Slack at 713-444-5188 or ddslack@att.net. Tickets can be purchased through Saturday, November 8th.

GO WHS HUSKIES!

St. Thomas More Named Blue Ribbon School

In early October, the US Secretary of Education, Arne Duncan, announced that St. Thomas More Parish School was chosen as one of the 2014 National Blue Ribbon Schools. This is the second time that St. Thomas More School has won this prestigious designation, previously winning in 1993.



Pictured are Pastor, Fr. Hai Dang, former principal, Mrs. Nadine Mouser, the school mascot, and current principal, Ms. Kristen Thome

The National Blue Ribbon Schools Program honors public and private elementary, middle and high schools where students achieve very high learning standards. Schools are chosen on their overall academic excellence. This year's award winners included 287 public schools and 50 private schools.

St. Thomas More, located just north of Westbury, is celebrating its 50th Anniversary this year. St. Thomas More Parish School has over 500 students ranging from preschool to 8th grade. The school has a dedicated staff of teachers and administrators that help make the school exemplary.

Current St. Thomas More principal Kristen Thome and former principal of 27 years, Nadine Mouser, along with several teachers will attend a recognition ceremony in Washington, DC, on November 11. Secretary Duncan said, "National Blue Ribbon Schools are models of consistent excellence and a resource for other schools and districts. We celebrate them for their tireless effort and boundless creativity in reaching and teaching every student."



See your child achieve MORE at

St. Thomas More Parish School

5927 Wigton Dr.

Houston, Texas 77096

713.729.3434 www.stthomasmore-school.org

Preschool Programs (3 & 4 year olds)
Coeducational Classes (Grades 1 - 8)

All Day Kindergarten Program
Before/After School Care Available

Give your child all the extras
Enriched Academics ❖ Strong Athletics ❖ Introduction to the Fine Arts

LIMITED OPENINGS

Call **NOW** to arrange a private tour of our campus - 713.729.3434



Westbury Area School News



Congratulations to Anderson Elementary Dual Language Program

Anderson Elementary initiated a new dual language program this year for Kindergarten students. A new grade level will be added each year until dual language is offered at all grade levels at Anderson, so next year dual language will be offered at the Kindergarten and First grade levels. Anderson is one of 14 campuses which implemented a dual language program in HISD this year, and Anderson has been rated by HISD as the **top campus** among the 14 campuses in its implementation of the program. Congratulations!

There are 4 Kindergarten teachers at Anderson who are involved in the dual language program: Mrs. Perez, Mrs. Sabugo, Mrs. Lerma, and Mrs. Glover. The "Rosetta Stone" language software instruction program started in October for students and families participating in the dual language program. The "Rosetta Stone" program is available at the school computer lab or it can be accessed at home.

Since the best time to learn a language is when a child is young, it is a great asset to the Westbury community that Anderson Elementary School has been selected to offer a dual language program. The caring and professional teachers at Anderson Elementary are doing a great job implementing the new program, and we encourage our residents to consider the benefits of this program when selecting schools or when bragging about our community.

For more information about this program, contact the school at 713-726-3600.



Do you bake?



Cake decorating, cookie & candy making supplies
Your Neighbor Since 1982

6218 Evergreen St. @ Hillcroft 77081

713-777-1871 www.makeacake.com

Westbury High School 2012 Bond Update

A Project Advisory Team (PAT) is chartered by HISD for each construction project. The members of the PAT will serve together for the entire project (two to three years) throughout each phase of the project, meeting monthly. Teams of 8 to 12 from the school community including: principal, students, teachers, staff, parents, community members, the architect and HISD Planning staff. During the design process the PAT will also help organize 3 community meetings.

Cindy Chapman and Becky Edmondson are serving on this team as community members. Kathleen Ownby is representing the alumni through the Friends of WHS Foundation. One of the community member roles and responsibilities is to help share progress updates with the public.

The meeting on October 21 set the Guiding Principles to be used by the WHS project. There was a lively discussion among the participants. Important items were safety, academic excellence, making Westbury a school of choice, equity, and making the most of community assets.

We as a community ask HISD to honor their long standing commitment and promise to acquire the remaining two properties to the east of the campus. Also, we want WHS to be built in a manner worthy of our Westbury neighborhood and our surrounding zoned communities. Please sign our petition on change.org.

We will keep you informed.

Parker Elementary 2012 Bond Update

The Project Advisory Team meeting for the new Parker Elementary school building met on October 22, 2014. Cindy Chapman and Becky Edmondson (alternate) represent the community. The other team members are teachers and administrators, the architects and HISD consultant.

Each month, they meet to discuss the design and features for the new school. The schematic design for the new school has been submitted to HISD for approval. A community meeting will be held in either November or December once approved. Construction is set to begin in the summer of 2015. Eighteen months is the projected completion time.

The City Planning Commission has approved the variance request to adjust the building setback from 35ft to 25ft on Willowbend.

Meadows Preschool



creative learning experiences
professional teachers
Babies—Pre K.

713.255.7025
4300 W. Bellfort
77035

Groups and Activities in Westbury

New Running and Fitness Group in Westbury

-by Ali Sloan, Praveen Gunaseelan, Greg Mondello

Are you trying to get fitter, eat healthier, run a 5K, or maybe even run a marathon? If so, Westbury Runners may be able to help. We meet regularly for friendly runs in the neighborhood, currently on Tuesdays, Thursdays, and Saturdays. Some of our newer runners are doing the Couch-2-5K program, several are into Crossfit and yoga, while others are participating in a 4-week nutrition and exercise challenge.

We welcome all levels of fitness, from new runners to experienced marathoners. While our run distances and paces vary, what's nice is that, with 100+ members, you will likely find a run partner whatever your pace. Our members communicate through our private Facebook group and organize activities throughout the week. Anyone can propose a group run, walk, or really any activity that gets us up and moving.

Our daily "Workout of the Day" post encourages members to report their workouts, which has been incredibly motivating. Our Facebook group is also a great place to ask questions related to running or general fitness, as there is always a helpful response (or three).

We welcome all area residents to join our group at <http://www.Facebook.com/groups/WestburyRunners/>. You can also e-mail us at WestburyRunners@gmail.com for more information. We look forward to hearing from you, and running with you!



Deck the Halls Holiday Parade

December 13

The 15th Annual Deck the Halls Parade will march on Saturday, Dec. 13th, at 4 PM. The parade is sponsored by The Mandell family. While this is not a WCC sponsored event, we are happy to advertise it and participate in it. This parade was mentioned specifically by *Houstonia* magazine when it ranked Westbury in the top 25 neighborhoods in Houston.

This year's theme is "Video Games". See the Grand Marshall lead video game characters along the traditional route through Westbury, plus the traditional favorites like Santa, Hanukkah Harry, and Pancho Claus. As always, they are collecting toys for underprivileged children for the holidays.

The parade organizers hope to see residents on the route light up their yards and wearing their favorite costumes. If you or your group would like to participate in the parade, please contact Ember Mandell at 713-367-3787, or visit us at www.deckthehallsparade.org, or at Deck the Halls Parade on Facebook.

Westbury CAREs

If you are a pet owner in Westbury, you should know about a wonderful group started right here in Westbury! Westbury CARE is an animal rescue and foster group that also provides outreach and education.

They have been instrumental in reuniting many Westbury residents and their lost or escaped pets. Westbury CARE has a Facebook page, Westbury Lost And Found Pets, and a group on Nextdoor.com. If your pet ever gets out, let Westbury CARE know. They have a great network of resident volunteers.

CARE volunteers took foster pets, including Mocha, to a Blessing of Animals at a nearby church. See in the photo. In late October, CARE hosted a pet microchip event in Westbury. CARE also arranges care and fosters many dogs. To learn more about this great Westbury group, visit www.westburycare.com.



Dr. Aileen Wang, DDS, MSD
Board Certified Orthodontist
Braces-Clear Braces-Invisalign
Located in Meyer Park Shopping Center
Most Insurances accepted

Special Promotion!
Get \$300 off full treatment
(with this ad)

Wang Smiles Orthodontics

713-721-2426
4770 W Bellfort St.
Houston, TX 77035

Maxx Gonzalez

El Arte D'Pintar

Expert Int./Ext. Paint

832-212-0739

maxx@maxxgonzalez.net

www.maxxgonzalez.net

◆ Sheetrock Repair
◆ Stain

◆ Fancy Texture
◆ Walls
◆ Faux Finishing

Commercial
◆ Residential
◆ Auto Glass

DISTINCTIVE GLASS

Phone: (713)981-0200

Fax: (713)981-4193

Email: dist@clear.net

9541 Town Park Dr.
Houston, TX 77036

www.distinctiveglassonline.com

City & County Services

Good News for Westbury's HCFCD Channels

As reported last month in the Crier, a contract to de-silt (dredge) all of the Harris County Flood Control District (HCFCD) channels in the Westbury area had been sent out for bids. On October 14, 2014, Commissioners Court awarded the de-silt contract in the amount of \$435,825. Several channels outside of our area are included in this bid packet other than the 4 channels marked on the accompanying map. The 4 marked channels are: the Willow Waterhole Bayou; the Braewick ditch; the Hummingbird ditch and the Fondren diversion channel.

According to HCFCD, the next step is to execute insurance and bonds. Upon completion of those documents, they will then schedule a Pre-Construction meeting with the contractor and establish a construction start date. They will advise us when the construction will begin.

We appreciate HCFCD addressing what we feel are long outstanding issues on these channels. Whenever there is a project, be it city, county or state, there is always a process and often these projects take years to wind their way through the system.



Hummingbird ditch near Banbury Dance Studio never drains!

City Property Not Maintained

The City of Houston water facility at 10902 Moonlight that faces Chimney Rock just north of West Bellfort had become an overgrown mess this summer. Suddenly the City of Houston just stopped mowing this property. The WCC office as well as numerous residents reported this to 311 for well over a month with no result. Frustrated, the WCC office contacted our District K representative to see why the most poorly maintained property in Westbury belonged to the City! District K found out that when the construction project inside the property began, Public Works erroneously took the property off the maintenance schedule. They rectified that situation and mowed the perimeter as well as the majority of the interior. We had to send another email to get them to mow the area that was closest to Chimney Rock as access for their tractor was blocked by pipes. They did get that mowed quickly after being notified.

The WCC stopped at the facility and spoke to an employee who said they too had reported that mowing had stopped. We learned that the project underway at this location was the removal of the 800 feet of pipe from the well that is drilled there to pump ground water into the storage tank when needed in emergencies or in drought conditions. At this time the tank is empty and the pipe is lying on the ground. We have asked for an update as to when this project will be completed.

One thing noticed during this situation is that only two sides of the water facility are screened from view. There is no screening at all along Chimney Rock. This was a surprise and a reminder to say a thank you to those who in the past planted all the trees and shrubs you see on our public right of ways. Can you imagine the pretty canopy that would be there today had trees been planted 50 years ago? It's not too late and now it is on our radar to see what can be done to screen this.



713.960.6222



MEYERLAND
WINDOWS & DOORS

**CALL FOR A
FREE ESTIMATE
TODAY!**



MIKE@MEYERLANDWINDOWS.COM
MEYERLANDWINDOWS.COM



FARMERS
INSURANCE

*Auto-Home-Life-Renters-Condo-Boat-Flood
Motorcycle-Business-Commercial Auto*

I have access to five home insurance providers

Peter Zografos Agent
5322 W. Bellfort #206
(713)-877-8811
pzografos@farmersagent.com
www.farmersagent.com/pzografos



Crime/Security

Security Updates and Information



Numerous packages have been stolen from front porches. It has been reported in several sections of Westbury. With the holiday season upon us, please be sure that your mail orders aren't just left on your front porch. Arrange for a neighbor to pick up or have it delivered to your work or directly to the UPS store.



There have been several robberies in Westbury and neighboring communities this past month. Be aware of your surroundings and make sure no one is following you home. Drive to a well-lit, busy location and alert the police or constables if you suspect someone is following you. The suspect in these cases was a male wearing a skeleton costume that approached the homeowners as they arrived home in the evening around 8PM.



The Constables offer a Vacation Watch program. Call 281-463-6666 to set up a vacation watch or go to www.harriscounty.gov/pct5/ and submit form electronically.

Thank you to Tony and Donna Roberts for hosting the October Coffee with the Constables! It was a great event! Check out page 1 for details on the November Coffee with the Constables.



Crime Statistics for Westbury Super Neighborhood 37* 30 days October 20, 2014

	Single-Family Home	Apt/Condo	Commercial Property	Public Areas	Totals
Burglary	6	5	0	0	11
Theft	7	18	3	2	30
Auto Theft	0	5	1	1	7
Robbery	5	3	0	0	8
Assault	1	1	0	0	2
Rape	0	0	0	1	1
Murder	0	0	0	0	0
TOTAL	19	32	4	4	59

*Area bounded by: S. Post Oak, US 90/S. Main, utility easement north of Willowbend and drainage bayou, west of Braewick

Single Family Residential Crime Locations (30 days preceding 10/20/14)

Block #	Street	Crime
11700	Ashcroft	Theft
12300	Ashcroft	Burglary
5200	Benning	Burglary
5200	Benning	Burglary
5900	Benning	Theft
11100	Braewick	Theft
5300	Briarbend	Robbery
6000	Dawnridge	Burglary
11100	Endicott	Burglary
10900	Hillcroft	Assault
12400	Hillcroft	Robbery
5400	Kinglet	Robbery
5800	Ludington	Robbery
5800	Ludington	Theft
6000	W. Airport	Theft
5800	W. Belfort	Theft
5800	W. Belfort	Theft
5900	W. Belfort	Burglary
6000	W. Belfort	Robbery

Westbury Area Patrol, Constables
281-463-6666

Westbury HPD Storefront
713-726-7126

HPD Non-Emergency
713-884-3131

Water Heaters:
Regular & Tankless

Disposals

Water Lines

Gas Lines

Drain Cleaning

Under Slab Repairs

Re-route kitchen & laundry pipes

ASTRO PLUMBING

Full Service Plumbing and Repair Specialist

713-256-0017

★ **JOHNNY LEWIS** ★

WESTBURY RESIDENT

New Sewer Lines

Hydrostatic Testing

Remodeling & Repairs

Sinks

Faucets

New Drains under

M16312 ★ Since 1985

★ Senior Discounts

★ All Major Credit Cards

★ Fully Insured

Westbury Area News

NEXTDOR.COM Policy

Please remember that the Westbury Civic Club does NOT monitor Nextdoor.com nor can it receive or respond to messages from Nextdoor.com. Please report all problems, questions or concerns directly to the Civic Club. The WCC can be reached at westburycc@sbcglobal.net, on Facebook (Westbury Houston), www.westburycrier.com, or at 713-723-5437. The WCC Office is located at 5322 W. Belfort #107.

Westbury Meet & Eat

Come out to Teotihuacan Mexican Restaurant at 6579 W. Belfort every 1st Thursday of the month to meet Westbury residents. This event is open to anyone who lives in Westbury.
 November Meet & Eat: Thurs, Nov 6 @ 6PM
 December Meet & Eat: Thurs., Dec 4 @ 6PM

Westbury Trading Group - Facebook

The Westbury/Meyerland/Bellaire Trading Group is a Facebook group that has over 3,000 members. It allows area residents to sell, trade, or buy items from other area residents. It was started by a Westbury mom who saw a need. Check it out today!

Links for Lost & Found Pets

☑Nextdoor Westbury - www.nextdoor.com
 ☑Westbury Lost and Found Pets Facebook-<https://www.facebook.com/westburyhoustontexas>
 ☑CARE- Contact at westburycare@gmail.com (Compassionate Animal Rescue Efforts is located in Westbury) or at www.westburycare.com

Living Gift Market– November 23

St. John's Presbyterian Church (5020 W. Belfort) will present its annual Living (Holiday) Gift Market on Sunday, November 23rd from 11:30AM to 1:30PM. This Market is unique because it offers affordable, socially responsible, and handcrafted gifts for the entire family - just in time for the holiday season! Booths include 10,000 Villages, Heifer International Project, Delicious Peace Coffee, Anchor House Ministry, Living Waters for the World, and Houston Seafarer's Ministry . . . just to name a few.

Brays Bayou Association Meeting

Monday, November 17, 2014, 7:30 PM at The Gathering Place, 5310 South Willow Drive, 77035

The speaker will be **Richard McNamara, the Bayou Greenway Program Manager for the Houston Parks Board**. He will explain more about the Bayou Greenway Program. It is a joint program with the City.

The Brays Bayou Association does not meet in December.

House Numbers

Also, take a look at your house number today. Do you have house numbers on your house and are the numbers readily visible from the street? Did you know that the city requires EVERY home to have a visible house number, so that emergency vehicles can respond quickly to the correct address. A house number painted on the curb is helpful, but it can be obscured by a parked car. The ordinance says a house number should be placed either on the primary door or within 18 inches from that door. If your house was built before 1979, then the numbers have to be at least 2" tall. If your house was built between 1979 and 2010, then the numbers have to be at least 3" tall. If your house was built after January 2010, then the numbers should be at least 4" tall.

WE ARE IN YOUR NEIGHBORHOOD

We live and work in the neighborhood!



5802 Cerriots
Another One Sold!!



JACKIE MURRAY
Cell: (713) 825-9179
jackiem@waynemurray.net



Wayne Murray Properties

**Area Residents
& Neighborhood
Specialists**



KENDYL MAURER
Cell: (281) 904-8199
kendylm@waynemurray.net



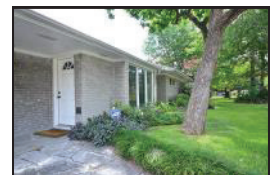
5431 Willowbend
Just Listed!



10935 Oasis
\$289,500

"We sell more, because we do more."

Over 38 Years of Experience!! Call for more information.



5526 Benning
\$374,900



11007 Oasis
\$329,000



11002 Endicott
Another One Sold!!



Your Home Could Be Here!!



5206 Briarbend
Another One Sold!



5827 Burlinghall
\$337,500

2014 Dues/Assessments

Mission of the WCC

The purposes of the Westbury Civic Club, Inc. (the "Club") are to improve the appearance of the Westbury area and promote the civic, cultural educational, health, and general welfare of the residents of the Westbury and Parkwest subdivisions in Harris County, Texas (collectively, the "Community").

Why do my dues go to Dallas? Is this correct?

Yes, this is correct! We have you mail your payments directly to our Bank processing center. This allows your payments to be processed immediately and saves our office manager hours of work.



WWW.WESTBURYCRIER.COM

2014 Westbury Civic Club Dues

***Please send this form in with your payment**

Name(s) _____
 Address _____
 Home Phone _____ Work _____ Cell _____
 E-mail _____

Make checks payable to: Westbury Civic Club, Inc.
Mail to:
P.O. Box 975182
Dallas, TX 75397-5182
Online payment:
paypal.com—Send Money to westburycc@sbcglobal.net
Make sure to include your address or account number

Sending multiple payments?
 Circle your payment choice
 2 payment of \$147.50
 3 payments of 98.34
****Call the office for more payment options or questions**

Westbury Civic Club Membership	\$40	\$
Greenspace Beautification	\$25	\$
Westbury Area Patrol	\$230	\$
Subtotal	\$295	\$
Additional Contributions:		
Westbury Civic Club		\$
Greenspace Beautification		\$
Westbury Area Patrol		\$
Westbury HPD Storefront		\$
Total		\$

Benefits of Paying Your Dues

- Protects your investment in your home by keeping Westbury a strong and vibrant neighborhood.
- Keeps the doors of the Civic Club office open and staffed.
- Protects your home and family with the Westbury Area Patrol through Constable Precinct 5.
- Improves the looks of our esplandes, parks, and green spaces.
- Advocates for City services and infrastructure improvements
- Hosts two White Elephant Community Garage Sale events each year

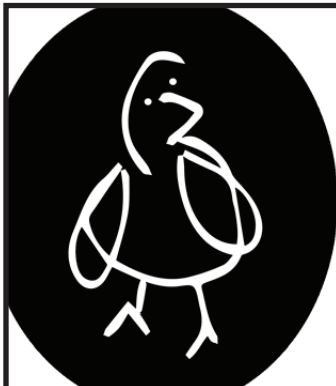
For a more detailed explanation, check out the January 2014 *Westbury Crier* available online at westburycrier.com.

ATTENTION: PARKWEST 1&2

The new 2015 assessment rate will be published in the December Crier. Statements will be mailed by January 1. 2015 assessments are due by February 1, 2015. If you would like to set up a payment plan, please contact the WCC Office at 713-723-5437.

Remodeling or Adding On? Submit Plans to WCC Now

The City of Houston does not review deed restrictions when issuing permits. They require a signed affidavit acknowledging that the plans comply with your deed restrictions. This holds YOU, the homeowner, accountable for knowing and complying with your deed restrictions. We are here to help you. All deed restrictions are available online at westburycrier.com.



Are you looking for a reliable dog walker or pet sitter for while you are at work or on vacation??

Boon Pet Care

is here for you!

As Westbury residents, we are committed to taking the very best care of our neighbors' loved ones.

Check out our website for pricing and details: www.booncare.com

Or contact us today: booncare@gmail.com or 713.936.2623



Wondering what your
property is worth in
today's market?

Call **Larry Mercer** now
for a
FREE MARKET ANALYSIS!

713-826-7274

Make Larry's 36 years of
experience work for you.

RE/MAX Metro

2626 Richmond Ave

Houston, TX 77098



LARRY MERCER, BROKER

EMAIL: TheMercerTeam@yahoo.com

www.larrymercer.com

Election 2014 : November 4

VOTER ID IS REQUIRED TO VOTE

1. A voter will be required to show one of the following forms of photo identification at the polling location before the voter will be permitted to cast a vote.

- Texas driver license issued by the (DPS)
- Texas Election ID Certificate issued by DPS
- Texas personal identification card issued by DPS
- Texas concealed handgun license issued by DPS
- U.S. military ID card with photograph
- U.S. citizenship certificate with photograph
- United States passport

2. My ID is expired. Will it still work?

With the exception of the U.S. citizenship certificate, the identification must be current or have expired no more than 60 days before being presented for voter qualification at the polling place.

3. A **permanent exemption** is available for voters with documented disabilities. Voters with a disability may apply with the county voter registrar for a permanent exemption. Affidavits are available for voters who have a consistent religious objection to being photographed and for voters who do not have any photo ID as a result of certain natural disasters as declared by the President or the Texas Governor within 45 days of the day the ballot was cast.

4. Election officials will review the ID and if a name is "substantially similar" to the name on their list of registered voters, you will still be able to vote, but you will also have to submit an affidavit stating that you are the same person on the list of registered voters.

5. If a voter does not present proper identification, the voter will still be permitted to vote provisionally. The voter will have (six) 6 days to present proper identification to the county voter registrar for the voter's ballot to be accepted.

ELECTION DAY – Tuesday, November 4

Westbury is respected as an area with high voter turnout. Keep up the Westbury tradition and VOTE!

What is on the ballot?

US Senator, Governor, Lieutenant Governor, Attorney General, Comptroller of Public Affairs, Commissioners of Public Accounts, General Land Use, Agriculture, and Railroad, Harris County District Clerk, County Clerk, and various state, county, district judges. You can view your sample ballot at www.harrisvotes.com.

Where Do You Vote?

- Precinct 14:** Parker Elementary, 10626 Atwell
- Precinct 22:** Foerster Elementary, 14200 Fonmeadow Dr
- Precinct 146:** Platou Community Center, 11655 Chimney Rock
- Precinct 281:** Kolter Elementary, 9710 Runnymede Dr
- Precinct 453:** Spanish United Pentecostal Church, 5365 W. Airport
- Precinct 291:** Houston Christian Fellowship, 11122 Hillcroft
- Precinct 403:** Westbury Baptist Church, 10425 Hillcroft
- Precinct 293:** Andy Anderson Elementary, 5727 Ludington
- Precinct 693:** Braeswood Assembly of God, 10611 Fondren

Polling locations may change up until Election Day. Visit www.harrisvotes.org for up to minute news.

VOTE, VOTE, VOTE!

For more information visit www.harrisvotes.org or call **The Election Information Line at (713) 755-6965.**



Since 1975

american SERVICES

When you want the job done right the first time!

With Exclusive  Technology

Call Now: 713-782-2989

WWW.ASAMERICAN.COM

Leak Detection Experts



FOUNDATION REPAIR

- ❖ Exclusive Ameri-Link System
- ❖ Lifetime Transferable Warranty
- ❖ FHA/VA Approved
- ❖ Licensed & Fully Insured
- ❖ Warranties Available on Existing Piers



PLUMBING SPECIALIST

- ❖ City Permits & Inspections
- ❖ Hydrostatic Testing
- ❖ Sewer Reroutes
- ❖ Tunneling Experts
- ❖ Leak Detections
- ❖ Gas Leaks & Repair

Hello My Name is

ROBERT




SAVE \$100.⁰⁰ OR 5% OFF ANY FOUNDATION REPAIR OR CONCRETE WORK

NOT VALID WITH ANY OTHER OFFER NEW CUSTOMER ONLY



Gold Star Member
MPL - 15997
BLUEPRINTS & DESIGN

SAVE \$50.⁰⁰ OR 5% OFF ANY PLUMBING REPAIR

NOT VALID WITH ANY OTHER OFFER NEW CUSTOMER ONLY

"CALL TODAY SO I CAN GIVE YOU AN HONEST FREE ESTIMATE"






CONCRETE WORK Driveways, Patios, Etc....

National Night Out 2014

National Night Out (NNO) was held on Tuesday, October 7. The WCC office had over 15 parties register this year! Thank you to all who registered their NNO party. Registering with WCC allowed Precinct 5, HPD and the WCC directors to visit many of the parties.

WCC Security Director Leslee Cross, WCC Vice President Marcia Hartman, Volunteer Director Stephanie Lester, and WCC President Becky Edmondson visited as many of the registered parties as possible bringing WCC goodies in hand! The WCC gave out logo shopping bags, magnets, and cups. The Westbury Area Patrol Constable deputies also visited as many parties as time would allow. What great parties there were! It was nice to meet so many Westbury neighbors. Many of these parties are "regular" parties and we thank these long time party throwers for their commitment to security by bringing neighbors together. One impressive thing this year was the number of brand new homeowners hosting parties this year. One homeowner had Becky make a speech about Westbury! What a great way to meet your neighbors. Greg & Libby Mondello in Westbury 1 were the winners of the WCC pizza party.

On Briarbend, the Muscio's have been hosting a spring and fall Neighborhood get together since 2000. Becky Edmondson attended their 26th party -- what a great group of neighbors!

If your block didn't have a party and you would like to do it in 2015, the WCC office can help you. In the meantime, thank you to all who came out to celebrate National Night Out!





LEGACY

ROOFING & EXTERIORS

WIND & HAIL SPECIALIST

713-819-5537

YOUR LOCAL ROOFER SERVING WESTBURY SINCE 2006.

Vonnie Cobb Realtors, Inc.



Family owned and operated.
Pictured Vonnie Cobb and Shannon Cobb.

*Your
Neighborhood
Realtor for
40 Years!*

Call us today for your
FREE Market Analysis!
713.664.1818



Professionalism with a Personal Touch

www.VonnieCobbRealtors.com • 4842 Beechnut • Houston, Texas 77096

Westbury Stays Connected

Meetings, we go to meetings!

Westbury likes to stay connected. Many board members attend meetings representing the WCC or WAIC. Perhaps reading through these opportunities below might spark an interest in those wondering how to get involved.

The **Shell Technology Research Center** on Gasmer hosted their second Community Roundtable discussion. It was interesting to see the historical pictures of their facility since it was first built in 1960 for the Shell pipeline being laid. The landmark derrick on the property is no longer used. After learning more about the research that takes place at Shell, we had a great group discussion facilitated by a Shell employee on what we see as the pressing needs in the community and looked at ways Shell could partner with us. Representatives from the WCC, WAIC, Westbury Little League, Westbury High School, Brays Bayou Association, Willow Waterhole Greenspace Conservancy, Friends of Levitt Pavilion, and District K enjoyed sitting down with one another to discuss the "BIG" picture. One take away point is the importance of helping Westbury High School (WHS) be the best that it can be. Shell and WHS are now working together to find ways to make this happen.

SuperNeighborhood 36 (SN36) The Brays Oaks SuperNeighborhood Council #36 Board Meeting was held on Tuesday, October 14 at the Raindrop Turkish House to discuss the key priorities in bettering the surrounding community. A Super Neighborhood is a geographically designated area where residents, civic organizations, and businesses work together to address the needs and concerns of their community. What a beautiful building and what a wonderful community of Turkish Americans interested and engaged in hosting community events. SN 36 was instrumental in our Super Neighborhood, SN37, becoming recognized and they are always welcoming when we are able to join them. Four Westbury residents attended this meeting and after the normal course of business, speaker State Rep Sylvester Turner, spoke of his 25 years in the Texas House of Representatives. Becky Edmondson updated the group on the Westbury Community Garden and the Levitt pavilion.

NUSA – Neighborhoods USA The City of Houston Planning Department hosted a welcome reception for the board members of NUSA as Houston is the host city for the conference that will be held in May of 2015. Marcia Hartman and Becky Edmondson attended this delightful event hosted at the Ripley Neighborhood Center off of Hillcroft. Westbury is hoping to participate as a showcased neighborhood. We participated back in 2000 when Houston hosted the last time. Neighborhoods, USA is a national non-profit organization committed to building and strengthening neighborhood organizations. The *Westbury Crier* won silver award from NUSA in 2013.

Master Composter Class Two gardeners from the Westbury Community garden attended the first Master Composter class offered by the City of the Houston. Look for upcoming articles and classes on this subject from our two new Master Composters!

SW Houston 2000 breakfast – Every two months, SW Houston 2000 hosts a breakfast at HBU bringing speakers of interest to the SW Community. The WCC hosts a table each breakfast and anyone interested in attending should contact the WCC office. In September, the presentation was *Houston, the City with No Limits* on the infinite possibilities Houston has to offer. Go to website www.thecitywithnolimits.com/ to learn about this campaign to encourage young professionals to move to Houston.

Neighborhood organizations The regular monthly meetings for the neighborhood organizations in and around Westbury are listed each month in the Crier. Whether your passion is learning more about the neighborhood, environmental issues, gardening, security, our bayous or our parks there is something for everyone. Visitors are welcome.



Top photo: WCC President Becky Edmondson with State Rep Sylvester Turner at the SN 36 Meeting. Bottom photo: Community Roundtable meeting at Shell Technology Research Center



ULTRA SKIN CARE

For Beautiful and Healthy Skin

SPECIALIZING IN:
Facials, Acne Treatment, Chemical Peels, Melasma, Back Treatment, Microdermabrasion, Massage Therapy, Anti-Aging Skin Treatment, Eyelash Tinting and Extension

Gift certificates Available

Call now at **713-409-4732** for an Appointment and Free Consultation

10% DISCOUNT OFF YOUR FIRST SERVICE

Thuy D. Nackman
Medical Esthetician
5322 West Bellfort Suite 112
Houston, TX. 77035
www.ultraskincare.vpweb.com
thuydungvs@yahoo.com



LOHMAN LAW FIRM, PLLC

General Practice & Family Law
 Wills and Supporting Documents, Trusts,
 Estate Administration, Probate;
 Divorce, Child Support, Family Rights;
 Collaborative Law & Mediation;
 Civil/Criminal Representation;
 Maritime Investigations/Consultant

Free 30-Minute Consultation

www.lohmanfirm.com
713-714-4601



Jon Lohman
5322 W. Bellfort, Ste. 111
 (W. Bellfort @ Chimney Rock)

Willow Waterhole Events and Updates

Movie in the Park: November 8, 6-9PM

Come enjoy "Maleficent", Disney's retelling of Sleeping Beauty, starring Angelina Jolie on an outdoor movie screen. Enjoy free popcorn. Make sure to bring chairs and blankets. It can get chilly in the open.



Cross County Track Meet at Willow Waterhole

The first annual Westbury Cross Country Classic track meet at Willow Waterhole was attended by thirteen middle and two elementary school teams in October. The event was sponsored by Westbury High School (WHS) with the intention of showing parents, community members, and other schools that Westbury is a great school and Westbury is a great community.



The 7th and 8th grade athletes ran the 2.2 mile race course laid out by the WHS coaches for training WHS track teams. The elementary athletes from Parker and Red Elementary Schools competed together in three age divisions on a 1000 meter course.

The HISD middle schools attending were Black, Clifton, Johnston, Pershing, Pin Oak, Revere, Rice, T. H. Rogers, Welch, YES Prep, and Young Womens College Prep. The Aldine Northside Striders Youth Track Club, a 501(c)3 organization, also competed.

Music & Movie Night at the Willow Waterhole Recap

Parker Elementary School, Jazz R Boyz, & the Westbury High School (Houston) jazz band and vocal ensemble group had a wonderful performance on Sunday, October 19 at the Willow Waterhole. Following the musical performance was a Movie in the Park featuring *Spiderman 2*. Honey's Sno-Balls sold food and beverages, and free popcorn was available. Make sure to check out the next Movie in the Park on November 8. More information, see above.



Presented By:



PARKING FOR ALL MOVIE & MUSIC EVENTS
Parking will be open on Dryad and Gasmer. Make sure to lock vehicle and do not leave valuables in the car.

ALL TYPES IRRIGATION, INC.

OVER 30 YEARS EXPERIENCE
Design • Drainage • Installation • Service
Commercial • Residential

Emil Becker
T.I.L. #4415
D.L. #126891

Office: (713) 726-1636
Fax: (713) 726-8322
Cell: (713) 819-2872

"Take an Hour of Your Time to Change Your Life!"

Every Tuesday Night @ 7PM

RSVP:
713 728 2300
Careers@waynemurray.net

Ask about our next career night webinar!

Wayne Murray Properties

Each Location Independently Owned and Operated

Westbury is GREEN!

October Yard of the Month

Westbury 2
Jonathan & Lyndsay
Hayden
5459 Redstart

Congratulations to all our winners for October Yard of the Month. If your section isn't listed, look in the December Crier for winner names.

Westbury 5
Maribeth & Lee Murphy
6206 Hummingbird

The Yard of the Month program will take a short hiatus in November, but will be back for holiday judging in December.

Westbury South
Homeowner
5851 Southminster

Parkwest 1
Alan Sprague
10810 Sagamore

Look in future Criers for more information.

Parkwest 2
Melissa & Bob Duran
5811 Spellman

Thank you to all our Yard of the Month judges!



Buy Fresh Food at the Westbury Community Garden

A farm stand run by Plant It Forward Farms is open at the garden on

Saturdays from 9AM to 5PM
Sundays 10AM to 6PM.



A farm share program is also available with pick up at the Westbury Community Garden. Visit www.plant-it-forward.org for more information.

Neighborhood Matching Grant

The Westbury Civic Club has applied for a matching grant from the City of Houston to beautify the Willowbend and Hillcroft sign marker. If approved, irrigation and new plantings will be added. Also, the Westbury Civic Club will be formally adopting the esplanade on Hillcroft from Willowbend south to Bankside. A similar grant in 2000 was awarded for the intersection at Chimney Rock and West Bellfort. The WCC added irrigation and adopted that portion of the esplanade. Look for future *Criers* for more information about the exciting opportunity to further beautify our esplanades!

A motion was passed at the October WCC Board meeting supporting this grant application. **"The Westbury Civic Club supports the Neighborhood Matching Grant application for public beautification efforts and irrigation on Westbury esplanades on Hillcroft near Willowbend"**

real estate market data FREE & CUSTOMIZED FOR YOU

Address	Price	On Market
6714 Cerritos Dr	\$217,000	60 days
6719 Cerritos Dr	\$244,300	33 days
6647 Cartagena St	\$122,000	218 days

Find out what your home is worth, see what the house down the street just sold for and learn about neighborhood real estate trends. Visit www.brockandfoster.com to access your FREE customized real estate data report.

Market Snapshot is brought to you by Brock & Foster. Susan Brock is a specialist in Westbury and the surrounding areas. With more than 12 years experience she offers an individualized experience that has earned her a five-star client experience rating. Susan is a licensed broker and REALTOR.®



FREE MARKET SNAPSHOT www.brockandfoster.com

susan@brockandfoster.com office: 713-272-2000 cell/text: 713-922-0877

Reduce, Reuse, & Recycle

As cooler temperatures arrive, leaves begin to fall. It is important that you prevent these falling leaves from filling and clogging our storm drains.

You can rake and bag them. However, instead put them back into your lawns and gardens, as a valuable source of mulch and fertilizer, and an addition to your compost.

Two gardeners from the Westbury Community garden have now been certified as Master Composters after taking a course last month. We will feature articles from them on how each of us as homeowners can help reduce what goes to the landfill by becoming better or even new composters.

There are four basic ways in which leaves can be managed and used in the landscape:

Mowing – a light covering of leaves can be mowed, simply leaving the shredded leaves in place on the lawn. This technique is most effective when a mulching mower is used.

Mulching – a lawn mower with a bagging attachment provides a fast and easy way to shred and collect the leaves. Apply a three to four inch layer of shredded leaves around the base of trees and shrubs. A two to three inch mulch of shredded leaves is ideal for flower beds.

For vegetable gardens, a thick layer of leaves placed between the rows functions as a mulch and an all-weather walkway that will allow you to work in your garden during wet periods.

Composting – in addition to leaves, other yard wastes such as grass clippings, pine needles, weeds, and small prunings can be composted. Compost can serve as a soil conditioner that nourishes your yard and reduces the need for outdoor watering up to 60 percent.

Soil Improvement – leaves may be collected and worked directly into garden and flower bed soils. A six to eight inch layer of leaves tilled into a heavy, clay soil will improve aeration and drainage. The same amount tilled into a light, sandy soil, will improve water and nutrient holding capacity.

WARNING: Keep leaves out of storm drains to reduce flooding in Westbury



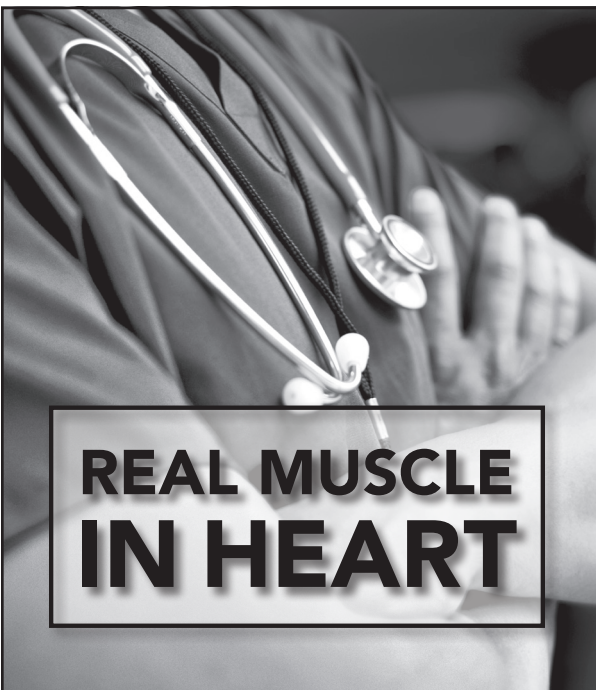
Willow Waterhole Work Days

On Saturday, October 4, students from Trafton Academy Student Council led by Ms. Trudy Holmes helped Russell Schexnayder spread wildflower seeds at Willow Waterhole on National Wildflower Planting Day.

On Saturday, October 11, WHS Honor Society students led by Ms. Jennifer Kuhleman helped Russell Schexnayder and Bill Burhans spread mulch near the trail by Shell at the Waterhole. Pictured below are WHS Honor students.



Stay connected, get reminders and learn about upcoming events at WWW.WESTBURYCRIER.COM



**REAL MUSCLE
IN HEART**

Proud to receive a top quality rating for heart bypass surgery.

Once again, Memorial Hermann Heart & Vascular Institute-Southwest has joined the top ranks of the nation's hospitals with a Three-Star rating from The Society of Thoracic Surgeons for quality related to heart bypass surgeries performed in January through December 2013. The nation's top measure for clinical quality in heart bypass surgery, a Three-Star rating places the Institute among the top 10 percent of programs in the United States. This rating reflects the 11 measures of quality for coronary artery bypass that directly affect positive patient outcomes. It's one more reason why Memorial Hermann Southwest is setting the pace in cardiovascular care in southwest Houston.

To learn more about our commitment to excellence, visit heart.memorialhermann.org



Garage Sale Policy

Remodeling your home? Adding On? Do you know your deed restrictions?

Did you know that the Westbury Civic Club can look over your proposed plans for free before you start

construction? We want to avoid deed restriction violations before they happen. Did you know that Westbury 2, Westbury 3, and Westbury 5 have a 25 foot rear setback for the main structure? Did you know that there is a minimum percentage of brick that must be on your home? Did you know that you can't build in front of your building line? We want to help you! We want you to find out about possible violations before it costs you money and time. Several homeowners in the past couple years have had to tear down and/or modify their construction due to deed restriction violations.

The City of Houston does not review deed restrictions when issuing permits. They require a signed affidavit acknowledging that the plans comply with your deed restrictions. This holds YOU, the homeowner, accountable for knowing and complying with your deed restrictions. We are here to help you. All deed restrictions are available online at westburycrier.com.

Westbury Civic Club Policy: Garage Sales, Estate Sales, Yard Sales, Moving Sales

Purpose: The intent of this policy is to clearly convey the Westbury Civic Club restriction on garage sales, estate sales, yard sales or any other independent action of the kind.

Definition: Garage, Estate, Yard or Moving Sale: The sale of personal property in, at, or upon any residential lot or home. This includes, with limitation, sales of personal property from the garage, driveway, yard, patio or house area of such premises.

Policy: Garage, estate, yard, moving sales and the like are not permitted in Westbury.

All sections of Westbury and Parkwest have deed restrictions that state "no noxious or offensive trade or activity shall be carried on upon any lot nor shall anything be done thereon which may be or become an annoyance or nuisance to the neighborhood". Garage, estate, yard, moving sales and the like draw substantial traffic and contribute to: hindering the flow of traffic on major thoroughfares; impeding access to homes by emergency vehicles or residents due to parking congestion; parking violations on city streets or esplanades; parking violations from vehicles parked on front yards; and, parking violations from blocking public right-of-way on sidewalks. Furthermore, advertising materials for garage, estate, yard, moving sales and the like contribute to: visual blight, trash along public streets, and violations of the city sign ordinance. The Westbury Civic Club considers garage, estate, yard, moving sales and the like to be "an annoyance or nuisance to the neighborhood".

All sections of Westbury and Parkwest have deed restrictions that state the lots are to be used for single family or family residential purposes. The Westbury Civic Club considers garage, estate, yard, moving sales and the like to be commercial use of residential property.

Approved by the Westbury Civic Club Board, August 20, 2014

JACKIE ZEHL & TERESA LEWIS
COLDWELL BANKER UNITED, REALTORS

A HISTORY OF EXCEPTIONAL REAL ESTATE SERVICE



5519 ETTRICK 3/2/1
WESTBURY \$289,900



5506 BIRDWOOD 3/2/2
MEYERLAND AREA \$319,900



11531 GAYMOOR 3/2/2
WESTBURY \$335,000



5406 SANFORD 3/2/2
WESTBURY \$359,000



4314 MCDERMED 3/2/2
WILLOW MEADOWS \$417,500

JUST SOLD

- 7630 BRAESDALE
- 6115 BRAESHEATHER
- 5702 FONTENELLE
- 5731 PORTAL
- 4601 REDSTART
- 5918 WIGTON



713.349.7221 | JZEHL@CBUNITED.COM 713.349.7227 | TLEWIS.HOUSTON@ATT.NET
5111 BELLAIRE BLVD. BELLAIRE, TEXAS 77401 | FACEBOOK.COM/JACKIEZEHL.TERESALEWIS

Westbury Commercial Properties

Survey: "I really want a _____ in Westbury"

This is the third annual survey of Westbury residents by the Westbury Civic Club. Several hundred residents have responded each year. This year 272 people took the time to answer 15 questions.

One thing we asked is: I really want a _____ in Westbury. We use these responses in discussions with our City Council Members and with the Brays Oaks Management District and its Economic Development Committee. We would all like to see QUALITY re-development of our "under performing" commercial areas. The Westbury Civic Club seriously advocates, and agitates, for the quality things all of us want in Westbury. BUT, unrestricted commercial property surrounding our neighborhood is not covered by our residential deed restrictions and we have NO say as to what is built. If a property goes up for sale, a developer can choose the type of development for that newly purchased property. We hope to convince them to invest wisely!

Westbury wants somewhere to go! 50 residents wanted a grocery store with 42 asking for a Super HEB by name, followed by Whole Foods, Trader Joes, and Sprouts. Next in popularity were the 40 plus who wanted restaurants, ranging from nice to mid-range to a Chik-fil-A and a few bars. Another 26 wanted a Starbucks or coffee shop. 20 wanted a new Westbury Square with choices of shops and stores. Stores requested were sporting goods, pet stores, liquor stores, gas stations, a garden center, and a movie theater.

Others had outdoor choices like a dog park, a skate park, a splash pad, an indoor pool, dedicated bike lanes and a gym. Others wanted a new library and community center. A dozen wanted general improvements to our infrastructure: Relief from flooding, better streets, a better high school, and better public safety were other desires.

Who responded? 56% were female. 50% under 44; 26% from 45-60 and 22% over 60. 54% of the respondents lived south of West Bellfort and North of West Airport; 38% lived north of West Bellfort and 8% lived south of West Airport.

What do you want to see at the old Westbury Square property (where multiple answers were allowed)?

Restaurant	82.21%
Grocery store	52.17%
Pharmacy	18.58%
New larger Library	52.17%
New larger Community Center	32.02%
Fast Food restaurant	8.30%
Retail space	46.25%
Retail space w/ luxury apts above	43.87%
Gas station	10.67%

Westbury Centerette

Update on the Centerette property at West Bellfort and Chimney Rock: The hearing that was scheduled before the City of Houston Planning Commission was deferred to October 30, although the sign on the property has not been updated as of October 22. The purpose of the City requiring applicants to post PROMINENTLY for variance requests is so that everyone will know that a request has been made to the city to allow a variation to a city ordinance and to allow input from the public. In this case, it is for the property setbacks. The city ordinance in Chapter 42 requires a property setback of 25 feet on major thoroughfares and 10 feet on residential streets (when not otherwise created by deed restrictions). The original re-plat showed 10 foot setbacks as that was the setback when the property was originally platted for development. The existing 2 story building is located on the 10 foot line on Chimney Rock. The WCC opposed a 10 foot setback on West Bellfort and that setback was not included in the variance request. The WCC does not oppose the variance request by Samantha Fitness.

Please remember that any developer that purchases any unrestricted commercial property in Houston or Westbury can build whatever he wants as long as it does not violate a city ordinance, and even then property setbacks can be waived by the City Planning Dept. We work closely with the City to try to address concerns of negative impact such as traffic, light pollution, aesthetics, flooding etc. We also try to work with owners, potential investors and developers to encourage them to be good neighbors. In this case we asked for new sidewalks around the perimeter, landscaping to soften the look along West Bellfort, Moonlight and Chimney Rock and additional screening for the parking garage that will be along Chimney Rock. The proposed plan by Samantha Fitness is for a 38,000 square foot 2-story building to house an LA Fitness with a parking garage. There has been much discussion about what will become of the iconic Westbury Centerette sign. In a recent discussion with the developer, he said that if he ends up developing this property as he hopes, he would refurbish the sign.

Westbury Square

As reported at the WCC Annual meeting, Becky Edmondson called owner, Al Antonini, for an update on when the rest of buildings at Westbury Square would be demolished. Mr. Antonini shared that he had a potential buyer for the property who wants to build townhomes. Edmondson has kept in semi-regular contact with him. He is fully aware of what the residents of Westbury would like to see developed on the property. Attempts at finding a buyer to make that happen have not been fruitful for Mr. Antonini. One of the potential buyers would build around 100 townhomes, each 1,900 to 2,500 SF, beginning at \$300,000. We will report updates as we get them.



Phyllis Berenberg
MS, CCC-SLP
Speech-Language Pathologist
Phyllis.berenberg@pbspeechtherapy.com

3033 Chimney Rock Road
Suite 400
Houston, TX 77056
T 713.781.9191
F 713.781.6114
pbspeechtherapy.com

WAIC / Southern Crushed Concrete

Southern Crushed Concrete – Update on Environmental Permit Request

Southern Crushed Concrete (SCC) has a facility on Gasmer (near the Willow Waterhole Conservation Reserve and the convent for the Dominican Sisters of Mary Immaculate) and has applied for an environmental permit to operate a concrete batch plant. “The proposed facility will emit the following air contaminants: particulate matter including (but not limited to) aggregate, cement, road dust, and particulate matter with diameters of 10 microns or less and 2.5 microns or less”. A community meeting on this topic was held at Westbury High School on July 29, 2014 to express concerns and to request a contested hearing. On September 22, the applicant requested that the case be referred directly to The State Office of Administrative Hearings (SOAH) for a hearing. It is our understanding that the applicant made this request to expedite the process to receive a decision faster.

SOAH will conduct a case hearing on November 20 at 10 AM at The Preserve at North Loop, 2020 North Loop West, Suite 111, Houston, TX, 77018.

As we learn more information, we will keep you updated via the WCC facebook page and NextDoor. It is currently our understanding that the November hearing will be a legal proceeding rather than a meeting for public comments. Per the Texas Commission on Environmental Quality, *“To request to be a party, you must attend the hearing and show you would be affected by the application in a way not common to the general public. Any person may attend the hearing and request to be a party. Only persons named as parties may participate at the hearing.”*

For more information, go to website

<http://www.tceq.state.tx.us/agency/hearings/events/southern-crushed-concrete-119443L001.html>



WAIC: Westbury Area Improvement Corporation

The nonprofit WAIC monthly meeting was held on October 15.

The next Westbury Area Improvement Corporation meeting will be on Wednesday, November 19, at Salem Lutheran Church at 8:30AM.

Guest speaker: John Kossie from METRO discussed the “Adopt a Stop / Adopt a Shelter Program”. Individuals or organizations can adopt a METRO bus stop/shelter. METRO will continue to service the shelter but an “adopter” can monitor to report problems and may pick up trash between scheduled collections. Individuals or organizations who adopt a stop/shelter will be recognized with a sign (if desired) and some METRO passes. Certain bus stops/shelters in Westbury have already been informally adopted by various organizations. If you or an organization would like to formally adopt a bus stop/shelter in the Westbury area, please contact the WCC office (so that we can coordinate efforts). METRO has more than 10,000 bus stops/shelters. www.ridemetro.org/SafetySecurity/MPDPrograms/AdoptStop.aspx

We discussed the upcoming hearing for the Southern Crushed Concrete environmental permit application. Edith Smith, Secretary, will chair the Nominating Committee for WAIC elections in November. Parker Elementary, Anderson Elementary, and Johnston Middle School submitted updates about their schools. The WAIC board approved 3 resolutions related to commercial properties with the intent that the WCC board would also consider these same resolutions to make them into resolutions for the entire Westbury Super Neighborhood. The 3 motions involved: the upcoming variance request hearing for the “Westbury Centerette” property at Chimney Rock and Gasmer, support for reconstruction of Gasmer, and support for a pending Neighborhood Matching Grant Program (NMGP) application by the Westbury Civic Club to submit an application for a beautification and irrigation project.

Plumbco 713-725-5025

MPL 36609

For all your plumbing installations and repairs.

Gary Bloch • www.PlumbcoHouston.com

Let Us Give Thanks!

**We Know
Westbury
& We
Call It
Home!**



**Buy
Sell
Lease**



Tony and Charlseay Porcarello
*** Top Producers ***

Tony: 713-898-1546 - tporcarello@yahoo.com
Charlseay: 713-898-1484 - charlseay@swbell.net
Office Direct Line: 713-349-7263
Visit us on the Web @ www.porcarello.com

\$\$\$\$ Free Copy of Tax Return on CD \$\$\$\$
\$\$\$\$\$ Free Review of Prior Year Return \$\$\$\$\$

Schertz & Manning CPAs PLLC

Pam Schertz, CPA Diane Manning, CPA

Small Business Accounting & Tax Services

5322 West Bellfort, Suite 211 Houston TX 77035

281-974-2096

ASTRO PLUMBING

"YOUR PROFESSIONAL PLUMBER"

BEST PRICES • FREE ESTIMATES • SENIOR DISCOUNT

CALL JOHNNY
Cell: 713-256-0017

JOHN LEWIS
M16312

ALL MAJOR CREDIT
CARDS ACCEPTED



**Legal Eagle
CONTRACTORS
REMODELING**
Since 1974

www.legaleaglecontractors.com

Houston's Most Trusted contractors



BBB Rating: A+



Dan Bawden, Master Builder
713-723-8850

Come see our Showroom at
5008 Locust Street
at South Rice, Bellaire

**Design and Build
Kitchens ★ Baths ★ Additions**

*Westbury's favorite
remodeler for over 25 years!*



Senior-focused
Remodeling
is our Specialty




BryanCalvinSmith.com

Westbury's largest...

Westbury's oldest...

Westbury's only...

Independent Insurance Agency

713-723-9353