



Westbury Crier

VOLUME 59, ISSUE 7

JULY 2014

Farm Stand Opens at the Westbury Community Garden

The Farm Stand at the Westbury Community Garden is now open! If you have been fortunate enough to visit the new farm stand, you probably came away with fresh picked tomatoes, kale, French sorrel, beets, radishes, summer squash, green and yellow beans, long beans, cucumbers, eggplant, mint, green onions and arugula. And this produce is just what is being harvested right now. Soon okra, Malabar spinach, peppers, cantaloupe and roselle will be

added to the list. Then in the fall, a whole different array of vegetables will be available.

All of this produce is grown without the use of chemical pesticides and fertilizers. Tell your neighbors and friends, and support our local growers, right in our own neighborhood.

The farm stand is open every Saturday and Sunday in the shade under the community garden pavilion at 12581 Dunlap Street (see map on page 9)



**The Plant it Forward Farm Stand is open:
Saturdays – 9AM to 5PM
Sundays – 10AM to 6PM**

**times and dates subject to change*

IN THIS ISSUE:

Platou Center & Meyer Library Schedules	4
Event/Trash Calendars	5
Westbury Pool	6
WCC Outreach	7
Westbury Community Garden	8-9
Crime/Security	11
Neighborhood News	12
Barbara Haverkamp	15
Willow Waterhole Bayou Trail	16-17
Westbury Soccer	18
2014 Budget To Date	19
METRO Reimagined	20
Company OnStage	21
Greenspace in Westbury	22
Southern Crushed Concrete Plant	23

WCC Board Nominations August 8 Deadline

The election for the Westbury Civic Club Board of Directors will be conducted in September. If you are interested in serving on the Board of Directors, please contact the Westbury Civic Club office before 4 PM on the second Thursday in August (August 14), the deadline specified in our bylaws.

Parkwest 3 Director Joe Niles is chair of the Election Committee. Candidates may submit a statement, not exceeding 100 words in length, when submitting their nomination for office. Please express your interest in running for the board of the Westbury Civic Club in writing, either by letter or by email. If you have any questions, please call the WCC office at 713-723-5437.

By Letter: The mail and physical address is 5322 W. Bellfort, Suite 107, Houston, TX 77035. Address the letter to the Elections Committee – Joe Niles

By Email: Use subject line: WCC 2015 Elections. Please send your email both to Joe Niles (the Election Committee Chair) at parkwest3@westburycrier.com, AND also send a copy of the email to the WCC Office at westburycc@sbcglobal.net

Westbury Pool NOW OPEN

The Westbury Pool is now open for the summer season. **For the full summer pool schedule, see page 6.**

The pool is located at 10605 Mullins @ Willowbend (near Parker Elementary).

WCC Office Summer Hours Mon-Thurs 9AM-1PM Friday Closed

*If you need to visit the office outside of the listed hours, please call 713-723-5437 and set up an appointment time.

FREE NOTARY SERVICE AVAILABLE DURING OFFICE HOURS

5322 W. Bellfort #107
Houston, TX 77035

Westbury Civic Club Board Meeting JULY 16 @ 7PM Westbury Baptist

(Open to all residents/homeowners)

Heavy Trash for JULY is TREE WASTE ONLY
Pick-up for ALL of Westbury is Thursday, JULY 10

Westbury Civic Club Board of Directors

President	Becky Edmondson	wccpresident@westburycrier.com
Vice President	Marcia Hartman	wccvp@westburycrier.com
Secretary	VACANT	
Treasurer	Pamela Schertz	wcc treasurer@westburycrier.com

Directors at Large

Communications	VACANT	
Community Relations	Cindy Chapman	wcccommunityrelations@westburycrier.com
Deed Restrictions	Jennifer Edmondson	wccoffice@westburycrier.com
Flood Control & Infrastructure	VACANT	
Greenspace Beautification	Carlos Mata	
Membership	Kate Wilson	
Security	Leslee Cross	wccsecurity@westburycrier.com
Volunteer Coordinator	Stephanie Lester	westburystephanie@gmail.com

Section Directors

Westbury 1	Sylvia Rendon	Westbury1@westburycrier.com
Westbury 2	Rocio Lara	
Westbury 3	Robert Montgomery	
Westbury 3	Charlsey Porcarello	charlsey@swbell.net
Westbury 4	Eugene Sirls	
Westbury 4	VACANT	
Westbury 5	Virginia Livingston	Westbury5E@westburycrier.com
Westbury 5	Genie Mitchell	
Westbury South	Robert Capps	
Parkwest 1	William Grimsinger	
Parkwest 2	Jeffrey Weiss	jhweiss@yahoo.com
Parkwest 3	Joe Niles	Parkwest3@westburycrier.com

Westbury Civic Club Office

Office Hours: Monday—Thursday 8AM-12PM*, Closed Fridays

Address: 5322 W Bellfort Ste. 107 Houston, TX 77035

Phone: 713-723-5437 **Office Manager:** Jennifer Edmondson

Email: Westburycc@sbcglobal.net

*The office is closed on all major holidays, weekends (follows HISD calendar)

NOTARY SERVICE IS AVAILABLE TO ALL WESTBURY RESIDENTS during office hours or by appointment

USEFUL PHONE NUMBERS

Westbury Area Patrol Constable Dispatch
281-463-6666

HPD Non-Emergency
713-884-3131

Power Outages (Centerpoint)
713-207-2222

Westbury HPD Storefront
713-726-7126

Platou Community Center
713-726-7107

Poison Control
1-800-764-7661

Street Light Repairs (Give pole number)
713-207-2222

District K Councilmember Larry Green
832-393-3016

District C Councilmember Ellen Cohen
832-393-3004

County Commissioner El Franco Lee
713-755-6111

Deed Restriction Enforcement (City Legal)
832-393-6333

City of Houston 311 Hotline (for all Non-Emergency Issues)

Forestry Department
Graffiti
Hazardous Waste Disposal
Heavy Trash
Neighborhood Protection
Parking Management
Recycling
School Crossing Light Repairs
Water and Sewer Repair

Stay connected!

Are you one of the 1,053 likes on
our Facebook page,
Westbury Houston?

NEWSLETTER INFORMATION

Published by: Westbury Civic Club, Inc

Editor-in-chief: Jennifer Edmondson

Edited by: WCC Publication Committee

Advertising: Call 713-723-5437 or email
westburycc@sbcglobal.net

Ad Disclaimer: The WCC neither represents nor endorses any advertisement in the newsletter. Perform your own due diligence before contacting any advertiser.

© Copyright WCC 2014 , All Rights Reserved

WWW.WESTBURYCRIER.COM

President's Message

Last month I wrote about the heart of Westbury being its residents. This month I'm thinking about all the volunteers who give their time to those organizations that inspire them. You will read about Westbury Soccer's 40th anniversary celebration, the oldest soccer league in Houston. Westbury Little League celebrated its 50th back in 2012. My grandson will swim for the Maplewood Marlins this summer, making him the third generation of my family to swim at this nearby pool. We are lucky to have so many quality sports available for our children and thanks go to the many volunteers that make them happen. Year after year, all of these organizations are run by volunteers, from coaches to team moms, to concessions, to paperwork.

You'll read about Barbara Haverkamp's 25 years of volunteer work at Parker. All of our area schools benefit from regular volunteers and I'm sorry I don't have a list of names to share. If you'd like to make an impact on today's education, why don't you consider joining HISD's Volunteers in Public Schools (VIPS) program.

As this edition goes to print, the Westbury pool programs have begun with record attendance. We are

working with the city to bring improvements to Hager Park. The Platou Center at Chimney Rock Park again is serving area children. On Tuesdays long time Westbury volunteers led by Hazel Potvin and Edith Smith are bringing exciting nature programming to the kids. They were able to hike to the Willow Waterhole thanks to the work of two other long time volunteers, Ron Hodge and Russell Shexnayder. Read more about this on pages 16 & 17.

There are so many organizations doing good works in Westbury. Some have been around for a long time like the WCC; some are brand new like CARE. You will find an article on what I think of as the alphabet soup of our neighborhood -- the organizations that, much like a good chicken soup, bring us all closer together, warm our hearts, create a sense of community and are good for the soul.

Some people look around and wonder why no one does something about this or that. Then there is that other group. You know them. The people who look around, see something that needs to be done and then they just get it done. Westbury might be covered in litter if it weren't for those who regularly police our parks, esplanades and ditches.

Westbury is so blessed to have an army of volunteers that have served anonymously and often thanklessly for almost 60 years. Thanks to the hundreds of you who volunteer with our neighborhood organizations, our neighborhood schools, our churches or other area groups. Our futures are brighter because of your passion and commitment!

And speaking of commitment and service, the upcoming Independence Day celebration is the perfect time to remember those who have bravely stood and fought for the ideals that were adopted 238 years ago. *"We hold these truths to be self-evident, that all men are created equal, that they are endowed by their Creator with certain unalienable rights, that among these are life, liberty and the pursuit of happiness."* With so much political rhetoric spewing, it is good to be reminded that we live in the greatest nation and to remember how the signers ended the Declaration of Independence: *"And for the support of this declaration, with a firm reliance on the protection of Divine Providence, we mutually pledge to each other our lives, our fortunes and our sacred honor."*

Wishing all of you a safe and Happy 4th of July, Becky Edmondson

Board Notes— June 2014

- Westbury Area Patrol Sgt. Hernandez with Harris County Pct 5 spoke about crime in the area
- Cory Eckert, manager of the Meyer Library, spoke about summer programming at the library.
- Section directors received handbooks
- Thank you to Jackie Murray of Weichert Realtors for providing cookies and water.
- Motion approved to have the WAIC (Westbury Area Improvement Corporation) be the lead entity in regard to the WCG (Westbury Community Garden)
- Motion approved to donate \$2,000 to WAIC
- The July Board meeting is Wednesday, July 16 at 7PM at Westbury Baptist

IF YOU ARE INTERESTED IN JOINING THE WCC BOARD, PLEASE COME VISIT ANY REGULAR BOARD MEETING TO MEET CURRENT MEMBERS AND SEE WHAT WE DO. YOU MAY ALSO CALL THE WCC OFFICE AT 713-723-5437 FOR MORE INFO ABOUT SPECIFIC VACANCIES.

Platou Community Center

11655 Chimney Rock

Hours: Mon-Thurs 12PM—8PM; Fri 11AM-7PM

Supervisor: Dan Reilly,

Daniel.reilly@houston.tx.gov or 713-726-7107

All day time adult programming is suspended for July due to Summer Enrichment Program for youth. Adult programming will resume in August. Please see the August Crier for more information. Some groups are meeting elsewhere. Please see schedule below.

Stretching Exercise Class

Monday, Wednesday, Friday
9-9:45AM

St. Thomas More Scout House, 10330 Hillcroft.

Improve your flexibility by joining this non-strenuous exercise class. No registration required. Wear comfy clothes.

Games

Wednesday, 10AM to 12PM

St. Thomas More Scout House, 10330 Hillcroft.

Contact Wally at 713-729-9310 for more information.

Portable Projects

Thursday, 10AM to Noon.

Bayland Park Community Center, 6400 Bissonnet.

Call Genie Mitchell at 713-470-7969 for more information.

RECYCLING NEWS



The recycling bins at the Chimney Rock Park will be removed soon. Please see page 10 for more information. Please use alternate recycling sites.

ACTIVITIES STILL AT THE PLATOU CENTER

TOPS: Take Off Pounds Sensibly, a weight loss support group

Tues, 5:45-7PM

Drop in to preview the program or call Dorothy at 713-723-4441 or Naomi at 713-988-2233

Summer Enrichment Program

Open to children ages 6-13. Hours are 8AM to 6PM. Call Dan Reilly at 713-726-7107 for more information.

Free Meal Program

Available for children 18 and under Monday thru Friday. Call Dan Reilly at the Platou Center for more information 713-726-7107

Meyer Neighborhood Library

5005 W. Bellfort

Hours: See box below

Phone: 832-393-1840 * www.houstonlibrary.org

Manager: Cory Eckert

July 2014 Events Children's Activities

Every Saturday - 11:30 AM –

Children's Storytime

Wednesday, July 2 at 10:30 AM

Join Mick Corley's Imagination Station: *Tales From Beyond*.

Corley's stories are the fuel driving kids imaginations as they search for lost knowledge and clues in the library. Enjoy music, magic, artifacts, and puppetry.

Wednesday, July 9 at 10:30 AM - Storybook Opera:

Westward Ho, Carlotta. The beloved diva Carlotta

Caruso heads west on a grand adventure, greeting everyone and everything with a song, including vicious villains she meets along the way.

Wednesday, July 16 at 10:30 AM - Nature Discovery

Center: Join the Insect Club. Watch an interactive puppet show about animals who want to join the insect club. Learn facts about insects, spiders, and other animals. This program is best for ages 4-8 but all are welcome!

Thursday, July 17 at 6 PM - A Night on the Moon.

Hands-on activities using food and household materials will show kids (and parents) how lunar dust is created, how the Earth's crust is formed, how the Moon got its craters, and much more. These activities are straight from NASA's labs. Registration is required.

Wednesday, July 23 at 10:30 AM - Houston Fire

Department: Fire Safety. HFD Public Education offers fun, entertaining and educational puppet shows that teach important fire safety messages using children's songs and interactive performances.

HOURS

Monday: Closed
Tuesday: 10AM-6PM
Wednesday: 10AM-6PM
Thursday: 12PM-8PM
Friday: 1PM-5PM
Saturday: 10AM-5PM
Sunday: Closed

All Programs are Free and Open to the Public

Library will be closed on July 4.

Dick n' Sons Floor Covering Center

6240 Bissonnet, Houston, Texas 77081

713.981.1900

www.dicknsons.com

Serving Westbury over 40 Years!



Fine Floor Coverings
for Every Budget

Carpet, Cork, Laminate, Vinyl, Hardwood,
Ceramic Tile & Countertops!

M-F 8-5 Thurs. 8-7 Sat. 10-4

6 Months No Interest Financing

What's Happening in Westbury

Events & Meetings Calendar July 2014

Thurs 3	WCC Office Closed
Thurs 3	Westbury Meet & Eat at Teotihuacan @ 6PM 6579 W Belfort Open to all Westbury residents
Mon 14	Westbury Community Garden Meeting 6:30PM Westbury Community Garden pavilion (Dunlap @ Fonmeadow)
Tues 15	METRO Reimagined Community Mtg—Drop in btwn 6-8PM Westbury Baptist Church - 10425 Hillcroft see page 20 for more information
Wed 16	WAIC/Super Neighborhood #37 Meeting— rescheduled for Tuesday July 29 at 2PM
Wed 16	WCC Board Meeting 7PM Westbury Baptist Church Open to ALL Westbury residents
Sat 19	Audubon Society Bird Survey 7AM Meet at The Gathering Place parking lot—5310 S. Willow
Mon 21	Brays Bayou Association Meeting 7:30PM The Gathering Place—5310 S. Willow
21-23	WCC Office Closed
Tues 22	SW PIP (Police Positive Interaction Program) Meeting 7PM Aramco Bldg
Tues 29	WAIC/Super Neighborhood #37 Meeting 2PM Ralph Reiger Office—11415 Chimney Rock



Happy 4th of July!

ATTENTION HOMEOWNERS

HURRICANE SEASON STARTED JUNE 1
KEEP STORM DRAINS CLEAR OF DEBRIS.
HAVE YOUR TREES TRIMMED NOW!

City of Houston Heavy Trash Schedule

January	Tree Waste	July	Tree Waste
February	Junk Waste	August	Junk Waste
March	Tree Waste	September	Tree Waste
April	Junk Waste	October	Junk Waste
May	Tree Waste	November	Tree Waste
June	Junk Waste	December	Junk Waste

Planning Calendar

August 25 –1st Day of School (HISD)
September 1– Labor Day



RECYCLING AND HEAVY TRASH CALENDAR



July 2014

Thurs 10	Curbside Recycling All of Westbury
Thurs 10	Heavy Trash- TREE WASTE ONLY ALL OF WESTBURY
Thurs 24	Curbside Recycling All of Westbury

August 2014

Thurs 7	Curbside Recycling All of Westbury
Thurs 14	Heavy Trash— JUNK WASTE ALL OF WESTBURY
Thurs 21	Curbside Recycling All of Westbury

Important Trash & Recycling Info

- ♻️ Trash cans need to be on curb by 7AM each Thursday
- ♻️ Trash cans must be removed by 10PM each Thursday
- ♻️ Trash cans must be placed at least 3 feet apart
- ♻️ Trash cans must be stored out of sight.
- ♻️ Yard waste MUST be in correct biodegradable bags
- ♻️ Heavy trash can be placed starting at 6PM the Friday before pick-up
- ♻️ YARD WASTE is not considered tree waste. It is collected on regular Thursday trash day
- ♻️ Call 311 for all trash questions and complaints
- ♻️ Nearby Trash Depositories and Recycling Centers:
SW Trash Depository/Recycling Ctr -10785 SW Frwy
Hours: Wed.—Sun. 9AM to 6PM; Accepts Junk Waste, Tree Waste & Recyclables.
- ♻️ **Environmental Service Center - 11500 S. Post Oak**
Hours: Tues/Wed 9AM-3PM; 2nd Sat 9AM-1PM.
Accepts Hazardous Household & Electronic Waste.
- ♻️ Refer to www.westburycrier.com or www.houstontx.gov for more trash and recycling information

Westbury Pool

10605 Mullins @ Willowbend (near Parker Elem.) 713-723-2192

Great Turnout at Water Fitness Classes

Over 250 people showed up at Westbury Pool for the first week of the Water Fitness classes. Longtime instructor Louis Moore really motivates you to get active! It's not too late to start. These **FREE** classes are on Wednesday and Friday evenings or Tuesday and Thursday mornings. Water fitness is a great exercise for any age, any fitness level and any body type. See right for class descriptions and times.

**Westbury Pool will be closed for general swimming use during fitness classes



Adult Water Fitness Class Schedule & Descriptions

Adult Hydro-Fit Power Training:

Wed. & Friday 6:10PM and 7:10PM

Louis Moore will teach his highly popular *Hydro Fit Power Training* class again for the 8th year at Westbury Pool with 2 different class times, either 6:10PM or 7:10PM. This class is an athletic approach to water fitness training with sports-specific drills, intense cardiovascular work, intervals, balance/core training, martial arts, and plyometrics. This is a great way to improve your cardiovascular conditioning and muscular strength and endurance with minimal stress on your joints. Loud, rocking music is a part of the workout.

Intensity: moderate to hard.

NEW Adult Aqua Zumba:

Tuesday and Thursday 9-10AM

The city will be offering *Aqua Zumba* to help meet the needs of Westbury residents who prefer morning classes. This class combines high energy and Latin music with movement in the water, a combination that helps participants dance away their worries while staying in shape.

WWW.WESTBURYCRIER.COM

Westbury City Pool Summer 2014 Schedule

July 1– August 17: Pool OPEN Normal Summer Hours Tuesday—Sunday 1-8PM; Closed Monday

July 4: Pool OPEN, 1-5PM

August 23 - August 31: Pool open on Saturday and Sunday only, 1-8PM

September 1 (Labor Day): Last day for the pool to be open! 1-6PM

Questions? Call pool at 713-723-2192

Address: 10605 Mullins (near Parker Elem.)

Cut me out

Cut me out

Cut me out

**Westbury Pool
OPEN
July 4th
1-5PM**



LOHMAN LAW FIRM, PLLC

Jon Lohman, Attorney and Counselor at Law
5322 W. Belfort Av., Suite 111, Houston, TX 77035



General Practice & Family Law
Wills, Trusts, Estate Administration
Divorce, Custody, Mediation
Civil/Criminal Representation
Free 30-Minute Initial Consultation
Credit Cards Accepted; Please Call for Appointment: 713-714-4601

Anne M. Reeks

Licensed Professional Counselor
annereeks@lpc@gmail.com
713-443-5407



Positive Practical Counseling

5959 West Loop South
Bellaire, TX 77401
www.brighter-brighter.com

WCC Outreach

Stop Trashing Westbury!

Did you know some of your neighbors regularly clean up trash on the esplanades, in the parks, and along our drainage ditches? Here is a recent note from one Good Samaritan:



“We live facing the Chimney Rock ditch, which is a nice, quiet neighbor. Three times a year the County mows the ditch and that always exposes the debris down in the grass. This time it looked like the mowers exploded a bag of trash! For my good deed of the day I took a trash bag and picked up as much as I could - this would be about a half block. As soon as I got down there it was obvious that there was more trash! It was hot and there was a lot of bending over to do, but I got most of it picked up! Now...only a couple more miles and I'll have it done to the bayou! Seriously...if everyone would take a moment to pick up your part of the public space - we would all benefit, as would the birds, fish and other animals from here to the Gulf of Mexico!”

-Westbury Resident

Coffee With the Constables

The WCC outreach program, “Coffee with the Constables” was created to allow residents an opportunity to meet the constables who provide supplemental security in Westbury. The 4th event was our first “Coffee with the Constables” on a Saturday morning. Held on the morning of June 14 at 5507 Briarbend, the coffee was a great success. Three constables and over 40 residents enjoyed coffee, juice, and donuts while talking with one another. The kids really enjoyed the mini bounce house. A big thank you to Brian and Bonnie Bibeau for hosting the June Event.

Resuming in September, the Civic Club will continue hosting these events in different sections of Westbury so that all residents have the opportunity to meet the valued members of the Westbury Area Patrol (WAP).

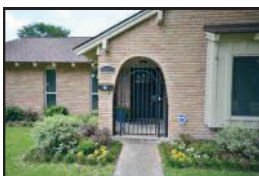
If you would like to host a coffee morning in front of your house, please email westburystephanie@gmail.com or call the WCC office with your contact info and address.

The WCC provides ALL the refreshments!



WE ARE IN YOUR NEIGHBORHOOD

We live and work in the neighborhood!



6022 Lattimer
Just Listed



JACKIE MURRAY
Cell: (713) 825-9179

jackiem@waynemurray.net



Wayne Murray Properties

*Area Residents
& Neighborhood
Specialists*

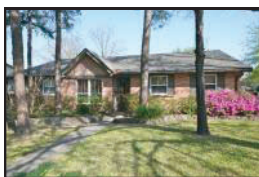


KENDYL MAURER
Cell: (281) 904-8199

kendylm@waynemurray.net



5934 Hummingbird
Pending



5802 Cerritos
\$284,900

“We sell more, because we do more.”

Call for more information!



5338 Creekbend
Another One Sold!



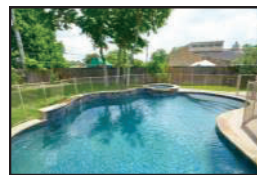
5934 Sanford
Sold in 5 Days!



5250 Kingfisher
Just Listed



Your Home Could Be Here!!!



5814 Bankside
\$389,900



11631 Landsdowne
\$239,900

Westbury Community Garden News

Tomato Tasting Party at WCG

The Westbury Community Garden's first tomato tasting party was a rousing success. For a suggested donation of \$5, visitors could taste a variety of tomatoes grown by the Westbury Community gardeners. All proceeds were for the benefit of the garden.

Guests could taste 21 varieties of tomatoes. There were 9 big slicing tomatoes, 3 salad tomatoes, 1 plum, and 8 cherries. The favorites (anecdotal, not an official vote) among the slicers were Lemon Boy, Cherokee Purple, Big Beef, and Black Krim. Mountain Magic and Bloody Butcher each got mentioned as favorite salad tomatoes. The cherries won the most



praise overall. Sakura Honey and Sun Gold were tied for overall most popular and Sweet 100 and Black Cherry tied for second in the Cherry category.

The guests included Council Member David Robinson and Kathleen Ballanfant from Southwest News. All in all, it was a fun and successful

Garden Workdays

There is always work to be done in the Westbury Community Garden! Workdays are regularly scheduled for the 4th Saturday of every month. It's a great way to learn about the garden and meet new friends. Check out our web site at www.westburycommunitygarden.org for the upcoming schedule and information about events. Come be a part of the fun!

The garden is showing the results of some hard work during the May Workday. Check out the freshly weeded and mulched trees and blackberries and the beautiful stand of purple bergamot in the Butterfly Garden. Our prairie wildflower area is being developed thanks to Noreen Hoard, who is a prairie and native plant expert living right here in Westbury. She and Hazel Potvin have been working on the area along Greencraig. Native plant seeds were scattered there last summer and are showing promise in establishing themselves. Those plants will help provide nectar sources for bees and butterflies, all welcome additions to the garden.



See your child achieve MORE at

St. Thomas More Parish School

5927 Wigton Dr.

Houston, Texas 77096

713.729.3434 www.stthomasmore-school.org

Preschool Programs (3 & 4 year olds)

Coeducational Classes (Grades 1 - 8)

All Day Kindergarten Program

Before/After School Care Available

Give your child all the extras

Enriched Academics ❖ Strong Athletics ❖ Introduction to the Fine Arts

LIMITED OPENINGS

Call **NOW** to arrange a private tour of our campus - 713.729.3434

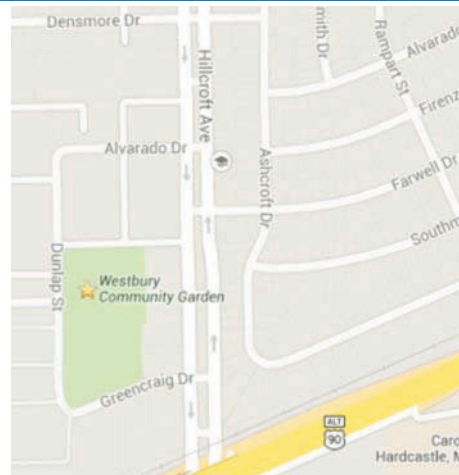


Westbury Community Garden News



New Website for Westbury Community Garden

The Westbury Community Garden (WCG) has updated their website to make it more visually appealing and informative. The website also has photos and information about the garden. To learn more, check it out at <http://westburycommunitygarden.org>. If you have any questions about the garden or would like to inform the webmaster about ways to improve the website, then use the Contact Us page on the website.



WHERE IS THE GARDEN?

The Westbury Community Garden is located near Hillcroft and South Main (US 90A) in zip code 77035. The intersection of Greencraig and Hillcroft is the intersection closest to the railroad tracks at South Main.

Take Greencraig and follow it around the bend where it turns into Dunlap. The large blue roof of the June Hollingsworth Outdoor Learning Center, built by Leadership Houston, is readily visible.

Become an important part of Westbury's history. Donate today to save our 7 acre site that is home to the Westbury Community Garden. Join the thousands of Westbury residents who in the past have donated their hard earned dollars to make a difference from: adding street lights, park and esplanade improvements, and bringing quality programming to Westbury youth etc. It's now our turn to really make a difference. We have faith that this project is worth doing -- protect this 7-acres of land as a public greenspace instead of yet another apartment complex built in SW Houston. To make donations by check, make the check payable to "WAIC – Land Acquisition", and then clip the donation form and mail it to the address indicated. To make a donation by PayPal or credit card, go to the WCC website (www.westburycrier.com) and click on the blue button "DONATE NOW – Secure donations through Network for Good". **Donations are tax-deductible.**

Tree Farm Update

The exciting new tree farm at the Westbury Community Garden is scheduled to be installed on June 25 with help from Trees for Houston and Scotts Miracle Gro. Check out future *Criers* for more information.



WWW.WESTBURYCOMMUNITYGARDEN.ORG

Help Save Our 7 Acre Greenspace

Attached is my tax-deductible donation of \$_____	Donations of any amount (small or large) are welcomed and appreciated!	
Name:	GIVING CATEGORIES	
Address:	Contributor	\$100
Email:	Sustainer	\$250
Mailing Address for Donation receipt (if different)	Sponsor	\$500
	Steward	\$1000
	Benefactor	\$5000+
	Other	

Checks should be made payable to WAIC – Westbury Land Acquisition

Send donations to the Westbury Civic Club,
5322 W. Belfort St., Suite 107, Houston, TX 77035

Vonnie Cobb Realtors, Inc.



*Your
Neighborhood
Realtor for
40 Years!*

Family owned and operated.
Pictured Vonnie Cobb and
Shannon Cobb.

**Call us today for your
FREE Market Analysis!
713.664.1818**



Professionalism with a Personal Touch

www.VonnieCobbRealtors.com • 4842 Beechnut • Houston, Texas 77096

City of Houston FYI

Road Work Coming Soon

Street work by the City of Houston is scheduled to begin later this summer in parts of Westbury 1 and 2 to remove and replace the asphalt overlay.



“Bad” Water Reports in Westbury

On June 22nd, residents in Westbury 1 and 2 reported cloudy water coming from their taps. Others reported a dirty smell and taste to the water. Many reports were made to 311 on Sunday afternoon and evening. The District K office was contacted and what follows is the official statement from the City of Houston Public Works department.

"The City of Houston Public Works & Engineering Department is aware of a number of reports regarding taste or odor change in our drinking water. PWE water quality professionals have concluded that the change is attributable to increased levels of a naturally-occurring compound in our upstream surface water supplies which is known to cause earthy or musty tastes and odors. Houston’s water continues to be safe to consume and meets or exceeds all federal and state regulations. PWE is currently evaluating treatment options, as well as monitoring the upstream water supply."

If you have issues with the quality of the water in your house please report it to 311.

Wondering what’s going on with all those sirens that you hear? Go to houstontx.gov/activeincidents and look up HPD and HFD Active Calls.

Recycle Bins at Platou Will Be Removed Soon

For many years the paper and cardboard recycle bins at the Platou Community Center have provided income for activities at the community center. Unfortunately, the recycling company no longer pays for materials left in the Platou Community Center recycle bins. Since all Westbury residents now have recycle collection available at each home, the Friends of Chimney Rock Park have regretfully decided to have the recycle bins removed from the parking lot of the Platou Community Center. Hopefully, removing the bins will prevent the intermittent dumping problems which have occurred near the bins. The Friends of Chimney Rock Park thank the many people who have supported the activities at the community center and deposited their papers and cardboard responsibly.

Commercial ♦ Residential ♦ Auto Glass

DISTINCTIVE GLASS

Phone: (713)981-0200 9541 Town Park Dr.
 Fax: (713)981-4193 Houston, TX 77036
 Email: dist@clear.net www.distinctiveglassonline.com

Meadows Preschool



creative learning experiences
 professional teachers
 Babies—Pre K.

713.255.7025
 4300 W. Bellfort
 77035

Maxx Gonzalez

El Arte D’Pintar

Expert Int./Ext. Paint

832-212-0739

maxx@maxxgonzalez.net

www.maxxgonzalez.net



- ♦ Sheetrock Repair
- ♦ Stain
- ♦ Fancy Texture
- ♦ Walls
- ♦ Faux Finishing

713.960.6222



MEYERLAND
 WINDOWS & DOORS

CALL FOR A FREE ESTIMATE TODAY!

MIKE@MEYERLANDWINDOWS.COM
MEYERLANDWINDOWS.COM

Crime/Security

Please Pay Your Security Dues

So far the WCC has collected \$224,000 for the Westbury Area Patrol, Harris County Constable Precinct 5. We need to raise an additional \$78,000 to cover the cost for 2014.

Approximately 500 more homes need to contribute towards the Westbury Area Patrol.

Westbury Area Patrol Donation Form

Name: _____

Address: _____

Phone #: _____

Email: _____

I would like to make a donation to the Westbury Area Patrol.

Donation Amount \$ _____

Don't become a victim of crime!

Summer is here and there is always an increase in Criminal Mischief, e.g., cars windows being broken, cars being broken into, houses being broken into, etc.

Teenagers have a lot of free time on their hands in the summer and often not much supervision. Historically property crimes increase when school is out. This is not a new phenomenon; looking back through the Criers from the 1960s "juvenile delinquents" were a common problem. Precinct 5 is increasing its patrols in hot spot areas and is adjusting some hours based on reported crimes. Please be sure to report all crime to the Pct 5 constables.

Sgt. Hernandez attended the June WCC meeting and congratulated residents on keeping valuables out of their cars. Cars are being rifled through, but if nothing of value is left behind, then nothing of value can be taken.

He also warned of telephone scams. Residents have received calls claiming to be from the IRS asking for Social Security numbers; others have had phony bill collectors taking credit card information for payment. Beware!

Don't forget Vacation Watch! For residents who pay the WAP patrol dues, a special Vacation watch may be ordered from Pct 5. The form is available only online. <http://www.harriscountytexas.gov/vacationwatch/vacation.aspx?constid=5>

If you want to order a vacation watch but do not have access to a computer or internet, please call 281-463-6666 for assistance.

WAP Constable Dispatch 281-463-6666

Crime Statistics for Westbury Super Neighborhood 37* 30 days June 22, 2014

	Single-Family Home	Apt/Condo	Commercial Property	Public Areas	Totals
Burglary	11	9	1	0	21
Theft	11	4	3	1	19
Auto Theft	2	1	1	0	4
Robbery	0	2	1	1	4
Assault	2	3	0	0	5
Rape	0	0	1	0	1
Murder	0	0	0	0	0
TOTAL	26	19	7	2	54

*Area bounded by: S. Post Oak, US 90/S. Main, utility easement north of Willowbend and drainage bayou, west of Braewick

Single Family Residential Crime Locations (30 days preceding 6/22/14)



**Westbury
HPD
Storefront
713-726-7126**

**HPD
Non-Emergency
713-884-3131**

Block	Street	Crime
5700	Bankside	Burglary
10700	Braewick	Theft
5200	Briarbend	Auto Theft
5800	Burlinghall	Assault
6000	Cartagena	Burglary
6000	Claridge	Theft
5000	Creekbend	Assault
6000	Dryad	Theft
5800	Firenza	Theft
5800	Greencraig	Theft
5800	Greencraig	Theft
5100	Kingfisher	Theft
5900	Lattimer	Theft
5700	Ludington	Theft
12300	Mullins	Theft
5800	Southminster	Auto Theft
5800	West Airport	Theft
5300	Willowbend	Burglary

Water Heaters:
Regular & Tankless

Disposals

Water Lines

Gas Lines

Drain Cleaning

Under Slab Repairs

Re-route kitchen & laundry pipes

ASTRO PLUMBING

Full Service Plumbing and Repair Specialist

713-256-0017

JOHNNY LEWIS

WESTBURY RESIDENT

New Sewer Lines

Hydrostatic Testing

Remodeling & Repairs

Sinks

Faucets

New Drains under

M16312 ★ Since 1985

★ Senior Discounts

★ All Major Credit Cards

★ Fully Insured

Westbury Area News

NEXTDOOR.COM Policy

Please remember that the Westbury Civic Club does NOT monitor Nextdoor.com nor can it receive or respond to messages from Nextdoor.com. Please report all problems, questions or concerns directly to the Civic Club. The WCC can be reached at westburycc@sbcglobal.net, on Facebook (Westbury Houston), www.westburycrier.com, or at 713-723-5437. The WCC Office is located at 5322 W. Bellfort #107.

Westbury Meet & Eat

Come out to Teotihuacan Mexican Restaurant at 6579 W. Bellfort every 1st Thursday of the month to meet Westbury residents. This event is open to anyone who lives in Westbury.

July Meet & Eat: Thurs, July 3 @ 6PM

August Meet & Eat: Thurs, August 7 @ 6PM

Westbury Trading Group - Facebook

The Westbury/Meyerland/Bellaire Trading Group is a Facebook group that has over 1,600 members. It allows area residents to sell, trade, or buy items from other area residents. It was started by a Westbury mom who saw a need. Check it out today!

Links for Lost & Found Pets

- Nextdoor Westbury - www.nextdoor.com
- Westbury Lost and Found Pets Facebook - <https://www.facebook.com/westburyhoustontexas>
- CARE- Contact at westburycare@gmail.com (Compassionate Animal Rescue Efforts is located in Westbury) or at www.westburycare.com

Westbury Alphabet Soup

There are many groups that advocate on quality of life issues for us here in Westbury. Most of the groups have regular meetings that you will find listed on our calendar page. We tend to speak of them by their acronyms.

WAIC	Westbury Area Improvement Corporation
WCC	Westbury Civic Club
WWGC	Willow Waterhole Greenspace Conservancy
WCG	Westbury Community Garden
WAP	Westbury Area Patrol (Constables)
BBA	Brays Bayou Association
SWH2000	Southwest Houston 2000
BOMD	Brays Oaks Management District
CARE	Compassionate Animal Rescue Effort
VIPS	Volunteers in Public Schools
PIP	Positive Interaction Program
FOLPH	Friends of Levitt Pavilion Houston

Other common acronyms:

COH	City of Houston
DON	Department of Neighborhoods (City of Houston)
WPE	Public Works & Engineering (City of Houston)
HPARD	Houston Parks and Recreation Department
HCFCD	Harris County Flood Control District
HCTRA	Harris County Toll Road Authority
HISD	Houston Independent School District
HCC	Houston Community College

ECHOS Shred and Recycle Day

July 12, 9AM-Noon at 9600 South Gessner. The truck will be behind the church. It's time to clean out your files now that your taxes are done. ECHOS offers on site shredding of your sensitive documents. A minimum donation of \$10 is requested. ECHOS will also accept your electronic items for recycle including printers, computers, monitors and phones of all types. If you have questions please call Kathy (713) 270-0369



WHEN YOU WANT THE JOB DONE RIGHT THE FIRST TIME!

Since 1975

With Exclusive



Call Now:

713-782-2989

Leak Detection Experts



WWW.ASAMERICAN.COM

Hello My Name is

ROBERT

FOUNDATION REPAIR



PLUMBING SPECIALIST

- ❖ Exclusive Ameri-Link System
- ❖ Lifetime Transferable Warranty
- ❖ FHA/VA Approved
- ❖ Licensed & Fully Insured
- ❖ Warranties Available on Existing Piers



- ❖ City Permits & Inspections
- ❖ Hydrostatic Testing
- ❖ Sewer Reroutes
- ❖ Tunneling Experts
- ❖ Leak Detections
- ❖ Gas Leaks & Repair



SAVE \$100.00 OR 5% OFF ANY FOUNDATION REPAIR OR CONCRETE WORK

NOT VALID WITH ANY OTHER OFFER NEW CUSTOMER ONLY

PRESENT AT TIME OF SERVICE

BBB

Gold Star Member

MPL - 15997

BLUEPRINTS & DESIGN

SAVE \$50.00 OR 5% OFF ANY FOUNDATION REPAIR

Call Today (713) 782-2989

NOT VALID WITH ANY OTHER OFFER NEW CUSTOMER ONLY

PRESENT AT TIME OF SERVICE

"CALL TODAY SO I CAN GIVE YOU AN HONEST FREE ESTIMATE"



CONCRETE WORK Driveways, Patios, Etc....

2014 Dues/Assessments

Mission of the WCC

The purposes of the Westbury Civic Club, Inc. (the "Club") are to improve the appearance of the Westbury area and promote the civic, cultural educational, health, and general welfare of the residents of the Westbury and Parkwest subdivisions in Harris County, Texas (collectively, the "Community").

Why do my dues go to Dallas? Is this correct?

Yes, this is correct! We have you mail your payments directly to our Bank processing center. This allows your payments to be processed immediately and saves our office manager hours of work.



**WWW.WESTBURY
CRIER.COM**

2014 Westbury Civic Club Dues		*Please send this form in with your payment																													
Name(s) _____																															
Address _____																															
Home Phone _____		Work _____ Cell _____																													
E-mail _____																															
<p>Make checks payable to: Westbury Civic Club, Inc.</p> <p>Mail to: P.O. Box 975182 Dallas, TX 75397-5182</p> <p>Online payment: paypal.com—Send Money to westburyccl@sbglobal.net Make sure to include your address or account number</p>	<table border="1" style="width: 100%; border-collapse: collapse;"> <tr> <td>Westbury Civic Club Membership</td> <td style="text-align: right;">\$40</td> <td style="text-align: center;">\$</td> </tr> <tr> <td>Greenspace Beautification</td> <td style="text-align: right;">\$25</td> <td style="text-align: center;">\$</td> </tr> <tr> <td>Westbury Area Patrol</td> <td style="text-align: right;">\$230</td> <td style="text-align: center;">\$</td> </tr> <tr> <td style="text-align: right;">Subtotal</td> <td style="text-align: right;">\$295</td> <td style="text-align: center;">\$</td> </tr> <tr> <td colspan="3">Additional Contributions:</td> </tr> <tr> <td>Westbury Civic Club</td> <td></td> <td style="text-align: center;">\$</td> </tr> <tr> <td>Greenspace Beautification</td> <td></td> <td style="text-align: center;">\$</td> </tr> <tr> <td>Westbury Area Patrol</td> <td></td> <td style="text-align: center;">\$</td> </tr> <tr> <td>Westbury HPD Storefront</td> <td></td> <td style="text-align: center;">\$</td> </tr> <tr> <td style="text-align: right;">Total</td> <td></td> <td style="text-align: center;">\$</td> </tr> </table>	Westbury Civic Club Membership	\$40	\$	Greenspace Beautification	\$25	\$	Westbury Area Patrol	\$230	\$	Subtotal	\$295	\$	Additional Contributions:			Westbury Civic Club		\$	Greenspace Beautification		\$	Westbury Area Patrol		\$	Westbury HPD Storefront		\$	Total		\$
Westbury Civic Club Membership	\$40	\$																													
Greenspace Beautification	\$25	\$																													
Westbury Area Patrol	\$230	\$																													
Subtotal	\$295	\$																													
Additional Contributions:																															
Westbury Civic Club		\$																													
Greenspace Beautification		\$																													
Westbury Area Patrol		\$																													
Westbury HPD Storefront		\$																													
Total		\$																													
<p>Sending multiple payments? Circle your payment choice</p> <p style="padding-left: 40px;">2 payment of \$147.50</p> <p style="padding-left: 40px;">3 payments of 98.34</p> <p>**Call the office for more payment options or questions</p>																															

Benefits of Paying Your Dues

- Protects your investment in your home by keeping Westbury a strong and vibrant neighborhood.
- Keeps the doors of the Civic Club office open and staffed.
- Protects your home and family with the Westbury Area Patrol through Constable Precinct 5.
- Improves the looks of our esplandes, parks, and green spaces.
- Advocates for City services and infrastructure improvements
- Hosts two White Elephant Community Garage Sale events each year

For a more detailed explanation, check out the January 2014 *Westbury Crier* available online at westburycrier.com.

ATTENTION: PARKWEST 1&2

Homes purchased in Parkwest 1 after Jan. 1, 1993 and Parkwest 2 after Jan 1, 1994 have mandatory assessments. The 2014 Assessment is \$227. All assessments were due by February 1, 2014 unless you have an active payment plan with the Westbury Civic Club. Late statements will be mailed in July. If you are interested in a payment plan, please call 713-723-5437.

Remodeling or Adding On? Submit

Plans to WCC Now The City of Houston does not review deed restrictions when issuing permits. They require a signed affidavit acknowledging that the plans comply with your deed restrictions. This holds YOU, the homeowner, accountable for knowing and complying with your deed restrictions. We are here to help you. All deed restrictions are available online at westburycrier.com.



Are you looking for a reliable dog walker or pet sitter
for while you are at work or on vacation??

Boon Pet Care
is here for you!

As Westbury residents, we are committed to taking the very best care of our neighbors' loved ones.

Check out our website for pricing and details: www.booncare.com
Or contact us today: booncare@gmail.com or 713.936.2623

Free Market Analysis

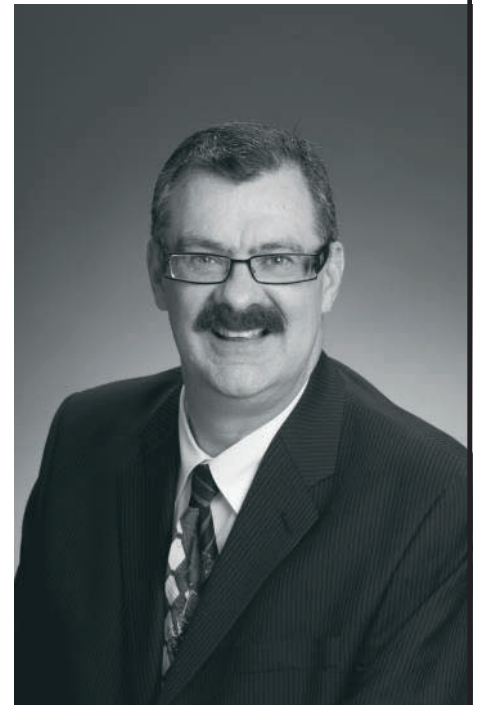
If you are thinking of selling your home or want to know the market value of your property, call **Larry Mercer** for a free Market Analysis.

713-826-7274

With 30 years of experience in the Houston real estate market, he will get the job done.

You may contact me by email at:
Lmercer@flash.net

Or visit my web site at:
www.Larrymercer.net



Neighborhood
Specialist

Barbara Haverkamp: Dedicated Volunteer

Barbara Haverkamp: In her own words

After 25-plus years of volunteering at Parker Elementary, I'm moving on. I never dreamed I'd be volunteering at Parker as long as I have; it just kind of happened. I've worked with four principals and three magnet coordinators. My husband and I moved to Houston in 1983, the year of Hurricane Alicia. We were to be here for his 2-year post-doctoral fellowship at Baylor College of Medicine. We bought a house in Westbury not caring about schools. We knew we would be leaving. However, we never left. When it was time for our son to start school, we were zoned for Parker Elementary.

I started volunteering as my son's kindergarten class co-head homeroom parent. Next thing I knew, the PTO nominating committee asked if I'd do School Store t-shirt sales. I agreed. Then I was asked to do publicity, a new PTO position. My husband got me a book from the library about how to do publicity. I read it and forged ahead. I continued to do publicity until my second, and last, child left. The head of HISD said all schools should have a newsletter, so the *Lion's Tale* was born. I contributed the first year and was asked by the PTO president to be editor

the second. I produced (edit and layout) the *Lion's Tale* from then on.

I volunteered for the Walk-a-Thon, now FunFest, Field Day, and the Suzuki Workshop. I chaperoned band performances off campus (my son was in band) and later strings performances (my daughter was in strings).

Back then, there was a group of mothers, whose children had graduated from Parker, who continued to set up the stage for Parker's Fall and Spring school musical productions. I joined them and was enlisted to sew all sorts of puppets, sweet potatoes and fish. Working on stage productions was a creative challenge, but fully rewarding. I never knew who anyone's child was. Neither of my children was in the musicals. I was working for the greater good. It was fun.

Time passed. After my daughter left for middle school, I stayed on as newsletter editor only. I felt I owed it to the school for the excellent academic and music educations my two children received at Parker. I told magnet

coordinator Cindy Pack that I'd stay till she retired. The spring before she retired, she/Parker nominated me for the HISD Charles Harding Senior Volunteer Award. I won in 2005 representing the SW District. It compelled me to continue editing and laying out the *Lion's Tale*.

As I had also volunteered at Johnston Middle School (Publicity), Lanier Middle School (worked in the library and did publicity for the orchestra), and The High School for the Performing and



Visual Arts (Friends alumni office for six years and PTO newsletter for four), HISD asked Parker Elementary Principal Cappy Selig if it could nominate me for the Texas Association of Partners in Education Gold Award for a large district. She agreed, not mentioning it to me till later. I won the TAPE Gold Award in 2006. I received the award at a banquet in Austin and met the head of the TEA. It had never been my intention to get such high praise for my volunteer work.

In light of this turn, I told Cappy I'd retire when she retired. Cappy Selig retired, but with my grandson now at Parker, I continued my mission. My grandson has been in 5th grade this year and will be moving up to Johnston Middle School in the fall. As he goes, I go.

It's been 25 years since I first entered the halls of Parker with my little boy. The amount of time that's passed is astonishing; it surprises even me. Parker Elementary has been a most extraordinary place to volunteer. George Bush, Sr., caught me with his "1,000 points of light" phrase. My late father, George E. Schraut, was on the national staff of the Boy Scouts of America. I was raised with "do a good turn daily" and "be prepared". And so I have served.

STORM DAMAGE?

It's not too late to file your claim!



**WE SPECIALIZE IN WIND AND HAIL
CLAIMS EVEN IF YOU HAVE BEEN
DENIED THE FIRST TIME**

WESTBURY ROOFER SINCE 2006

- ◆ No Contracts
- ◆ No Money Down
- ◆ Quality Materials
- ◆ Insured
- ◆ Locally Owned

FREE INSPECTIONS 713-819-5537

Willow Waterhole Bayou Trail

Willow Waterhole Bayou Trail Extended

Westbury resident, Russell Schexnayder, cleared a walking trail along the south bank of Willow Waterhole Bayou from Chimney Rock to Willow Waterhole Bayou Trail. The newly cleared portion of the trail, which runs along the top of the bank of the bayou, starts by the Post Office on Chimney Rock. The trail runs from there to the crushed granite Bayou Trail which runs next to The Gathering Place on South Willow (see next page for more about the WW Bayou Trail.)



The trail provides a pleasant walk through a partially-shaded natural setting. There are many oak trees along the bayou, especially behind the hospital. A little further on the trail runs through an overgrown area several hundred feet long that provides prime bird habitat.

Russell devoted over forty hours in recent months to clear the path. The path had to be cleared of small thorn trees and thorn vines, other saplings and vines, fallen branches as well as debris thrown over the fences. However, one must be careful to avoid poison ivy. Russell intends to try to completely remove the poison ivy from the area in the near future. The

area also needs to be de-littered along the apartment fence line.

The hope is that the trail can eventually be upgraded with the assistance of the Brays Oaks Management District to a hike and bike trail that can be accessed using back streets from all parts of Westbury. From west of Chimney Rock the trail can be accessed via Burdine, which runs behind Westbury Square. From Westbury Section 1 the trail can be accessed by crossing the pipeline easement via Starkridge and taking Chimney Rock to the Willow Waterhole Bayou Bridge just before the Post Office.



Trail marker at beginning of the Willow Waterhole Bayou Trail near the Gathering Place off S. Willow. It runs from S. Willow north to the bayou that runs behind parts of Westbury Sections 1 and 3.



Mosquito Control



It's that time of year again.

The mosquitoes are out full force! Mosquitoes are not only annoying but they can carry dangerous illnesses. The best way to keep down the number of mosquitos is to not let them breed.

Mosquitos can breed anywhere that water is left to stand or collect. If you look in the standing water, you may see little wiggling things. Those are baby mosquitoes (larvae). Some examples of where water may be left standing include: pet water bowls, bird baths, low puddle areas, saggy gutters, and plant container saucers. What can each of us do to reduce the numbers of mosquitos?

- ◆ Tip over all the water collectors in your yard and leave them turned over to discourage mosquitoes
- ◆ Don't allow standing water in saucers under a pot.
- ◆ Rinse and refresh bird baths and pet water bowls daily.
- ◆ If you collect rainwater to water your plants, be sure the container has a good screen cover to keep mosquitos out of the water.
- ◆ If you have a decorative pond in your backyard, check it for mosquito larvae. Small fish called Gambusia (Mosquito Fish) can be added to eat the mosquito larvae.
- ◆ Keep gutters in good repair.
- ◆ Get rid of old tires.

Drywall Finishing
Door Refinishing
Interior & Exterior Painting
E-barrier Reflective Coating
Ceramic Tile
Wood Floors
Granite

WCL Painting

281-850-0795

*Specializing in Customer Service
and Professional Workmanship*



CHECK OUT
PROMOS & COUPONS
ON THE WEB

WWW.WCLPAINTING.COM

wclpaint@gmail.com



Willow Waterhole Bayou Trail

New Eagle project at the Willow Waterhole

Troop 99 from St. Thomas More has gifted the Willow Waterhole with many Eagle Scout projects over the last several years. The latest Eagle Scout project can be seen on the Willow Waterhole Bayou trail that leads back to the bayou. Luke Nisley created and built an Insect Habitat. In keeping with the educational aspects of this trail that has tree identification signs (also created by a Troop 99 Eagle Scout), this project highlights the importance of insects



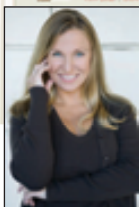
having a place to live. Insect Habitats, or Hotels, provide a home to pollinators and pest controllers. Tidy gardens, lawns and lack of dead wood mean less and less habitat for wild bees, spiders and ladybugs. A wildlife stack can harbor numerous beneficial insects and amphibians. If you are interested in creating one in your own backyard check out www.inspirationgreen.com.

Summer Enrichment Program at Platou Community Center

Children from the Summer Enrichment Program at the Platou Community Center recently hiked along the Willow Waterhole Bayou to look for reptiles, birds, and interesting plants as they made their way to the Willow Waterhole Bayou Trail. The children used rope guidelines to climb down the banks of the bayou and up again as they learned about the water flow and watched for animals. A highlight of the walk was seeing the Insect Habitat on the trail. The Summer Enrichment Program is assisted by dedicated community volunteers and a \$500 grant from Exxon Mobil to the WAIC.



real estate market data FREE & CUSTOMIZED FOR YOU



FREE MARKET SNAPSHOT www.brockandfoster.com

Find out what your home is worth, see what the house down the street just sold for and learn about neighborhood real estate trends. Visit www.brockandfoster.com to access your FREE customized real estate data report.

Market Snapshot is brought to you by Brock & Foster. Susan Brock is a specialist in Westbury and the surrounding areas. With more than 12 years experience she offers an individualized experience that has earned her a five-star client experience rating. Susan is a licensed broker and REALTOR.®

BROCK and FOSTER
> Real Estate
 Greater Knowledge. Greater Results.



susan@brockandfoster.com office: 713-272-2000 cell/text: 713-922-0877

Westbury Soccer Club

WESTBURY SOCCER CLUB

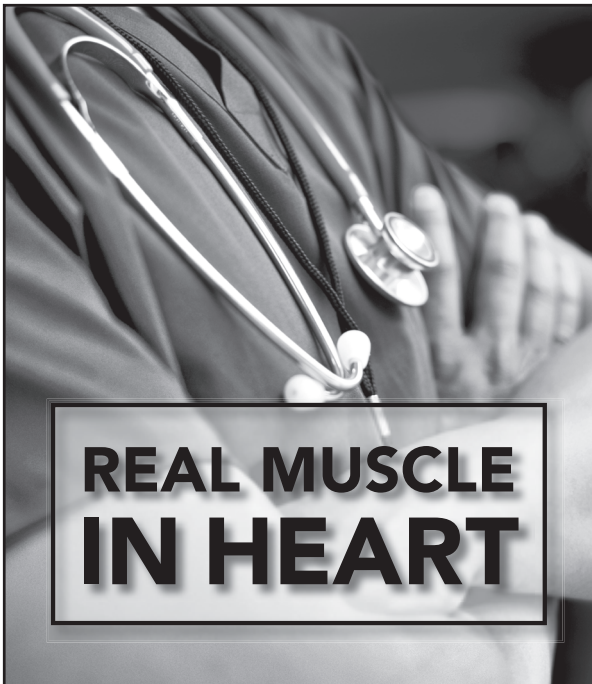
May 17th and 18th was a momentous weekend for Westbury Soccer Club as it celebrated 40 years of serving our area youth with the best soccer experience in Houston. The weekend began on Saturday with over 400 players and loved ones at Dynamo Stadium where they watched the Houston Dynamo defeat the LA Galaxy 1-0. Westbury Soccer Club players were invited to cheer on the Dynamo with high-fives in the rally tunnel and treated to a personal meet-and-greet with Dynamo defender, David Horst #18. The players left the stadium on cloud 9!

On Sunday, the Westbury Soccer Club culminated the celebration with a "Fun Fest" Day held at the Parker Elementary Soccer Field and Westbury Park. Hundreds of players, family members and friends gathered at the soccer field and park to be

part of the club's historic event. U6 and U8 teams played their last season games while being cheered on by Dynamo cheerleaders and Dynamo Diesel. After the games, families enjoyed delicious food and snow cones provide by Honey's Snoballs. With all their energy, children continued to play soccer, paint their faces and hair, tour a fire truck from Station 48, rock climb and jump in bounce houses.

The Westbury Soccer Club is the oldest soccer club in Houston. If you would like to be a part of it, visit its website at www.westburysoccer.org or like us on Facebook. Register your player now and be a part of the next 40 years!

WWW.WESTBURYSOCCER.ORG



**REAL MUSCLE
IN HEART**

Proud to receive a top quality rating for heart bypass surgery.

Memorial Hermann Heart & Vascular Institute-Southwest has joined the top ranks of the nation's hospitals with a Three-Star rating from The Society of Thoracic Surgeons for quality related to heart bypass surgeries performed in January through December 2013. The nation's top measure for clinical quality in heart bypass surgery, a Three-Star rating places the Institute among the top 10 percent of programs in the United States. This rating reflects the 11 measures of quality for coronary artery bypass that directly affect positive patient outcomes. It's one more reason why Memorial Hermann Southwest is setting the pace in cardiovascular care in southwest Houston.

To learn more about our commitment to excellence, visit heart.memorialhermann.org

**MEMORIAL
HERMANN**
Heart & Vascular Institute

2014 Budget To Date Thru May 2014

WCC GENERAL OPERATION/PROGRAMS 2014

General Income	Budget	Actual
Mandatory Membership	16,000	14,412
Non-Mandatory Membership	44,000	35,539
Donations - Civic Club	1,500	1,087
Community Garage Sale	2,500	1,550
Crier Advertising Fees	50,000	18,828
Refinancing Fees	2,800	1,050
Transfer Fees	30,000	13,100
Interest Income	3,250	2,862
Total General Income	150,050	88,428
Program Expenses		
Crier Printing & Expenses	38,000	16,620
Community Garage Sale	2,000	1,402
Programs & Hospitality	5,000	-
Membership Expenses	3,500	2,301
Deed Restriction Revisions	10,000	-
Deed Restriction Enforcement	2,500	-
Yard of the Month Program	500	-
Total Program Expenses	61,500	20,323
General Expenses		
Postage, Mailing Service	500	330
Printing & Copying	-	1,078
Supplies	3,000	320
Training & Education	1,000	-
Contributions to Ext Orgs	3,500	1,000
Bank & Pay Pal Fees	3,800	2,288
Computer Expense	5,500	594
Insurance	6,850	1,042
Payroll Expenses	46,000	15,849
Contract Services	3,750	2,042
Office Expenses	12,650	4,708
Conference & Meetings	2,000	192
Total General Expenses	88,550	29,443
Total Program & General Expenses	150,050	49,766

WCC RESTRICTED FUNDS 2014

Westbury Area Patrol Income	Budget	Actual
Mandatory Assessments	64,000	56,977
Non Mandatory dues	218,400	160,669
Additional WAP donations	10,000	5,034
Westbury Garden Townhomes	9,600	1,600
Westbury Area Patrol Income	302,000	224,280
Westbury Area Patrol Expenses		
Harris County Constable Fees	302,000	144,291
Greenspace Beautification Income		
Garden/Holiday Tours	1,000	-
Mandatory Assessments	11,000	8,701
Non Mandatory donations	25,000	16,657
Additional donations	1,500	448
Grants & other	6,000	5,288
Total Greenspace Income	44,500	31,094
Greenspace Expenses		
Monthly Maintenance Contract	20,000	8,013
Water Expenses	5,000	1,400
Supplies & Plants	3,500	832
Other Services & Equipment	2,000	-
Special Projects	14,000	3,650
Total Greenspace Expenses	44,500	13,895



FARMERS
INSURANCE

*Auto-Home-Life-Renters-Condo-Boat-Flood
Motorcycle-Business-Commercial Auto*

I have access to five home insurance providers

Peter Zografos Agent
5322 W. Bellfort #206
(713)-877-8811
pzografos@farmersagent.com
www.farmersagent.com/pzografos



Plumbco 713-725-5025

MPL 36609

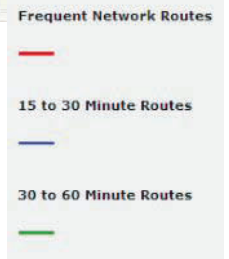
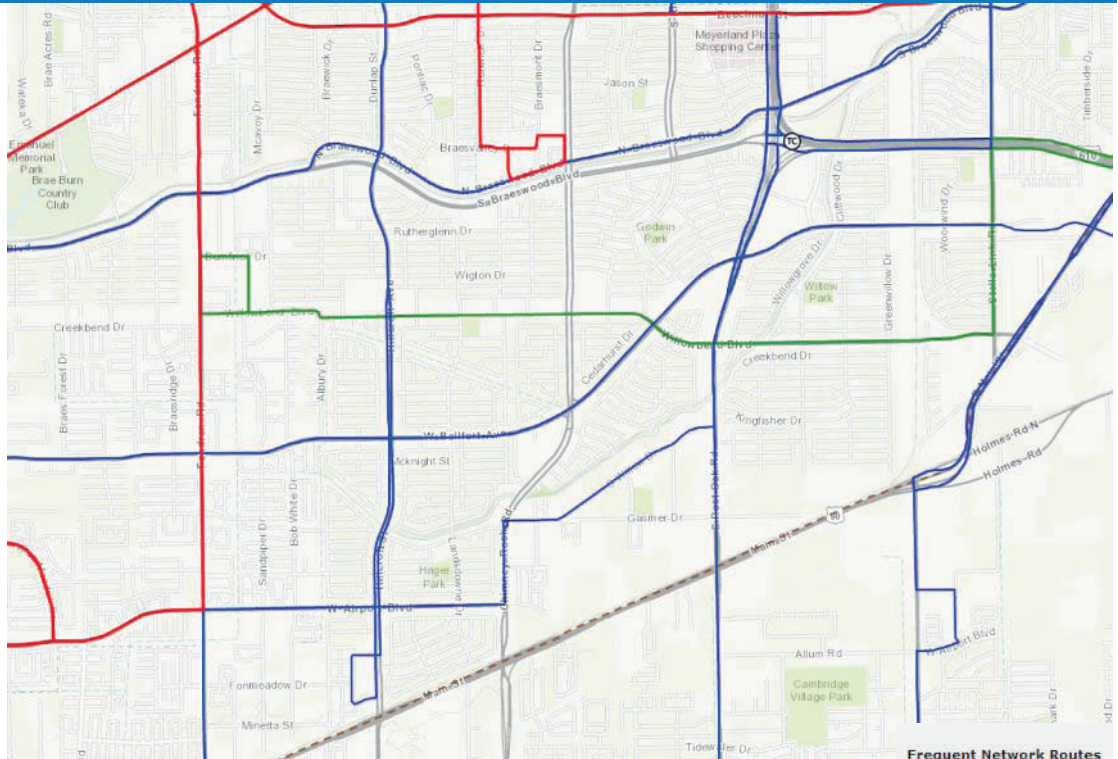
For all your plumbing installations and repairs.

Gary Bloch • www.PlumbcoHouston.com

METRO: Proposed Route Changes

METRO Proposes Major Changes to Bus Routes

As part of a “re-imagining process”, METRO has evaluated all bus routes in the city and proposes major changes. These changes are now in the public comment period. A public drop-in workshop held by METRO will be held at Westbury Baptist Church on Tuesday, July 15 from 6-8PM. Share plan details and information with your friends and neighbors using the attached flyer, or encouraging the use of the project website at www.transitsystemreimagining.com or METRO's website www.ridemetro.org.



The WCC and WAIC are still evaluating the proposed changes. One obvious change which is proposed by METRO is that the Chimney Rock bus route will no longer provide service through all of Westbury.

The draft plan also includes simpler, straighter routes, updated route numbering to help customers better navigate the system and better maps.

For more information, please go to www.transitsystemreimagining.com or attend the Drop-In METRO Reimagined Meeting in July right here in Westbury. (see below)

“The purpose of the METRO Re-imagining Plan is to take a fresh look at the METRO service area (given our existing transit facilities and level of financial resources) and design a regional transit system from the ground up with a ‘blank-slate’ approach”.

METRO states that: Service frequency was key in developing the better network. Right now, less than 30 percent of METRO riders have access to routes that run at least every 15 minutes seven days a week system. Under the draft plan, the number increases to 73 percent.

It's all in our Reimagination!

METRO wants to give you a first-hand preview of the improvements we're proposing to our bus system...

MORE
Straight Runs

MORE
Weekend Service

MORE
Frequent Service

Discover the facts about METRO's proposed local bus network, and join the conversation at our next public workshop, **Tuesday, July 15th, from 6 - 8 p.m.**

Westbury Baptist Church
10425 Hillcroft Street
Houston, TX 77096

For more information on the Transit System Reimagining program, visit us on the Web at RideMETRO.org or call 713-739-6026.

Company OnStage

ARTHUR MILLER'S "ALL MY SONS"

DIRECTED BY MICHAEL BARRICK

During the war Joe Keller and Steve Deever ran a machine shop which made airplane parts. Deever was sent to prison because the firm turned out defective parts, causing the deaths of many men. Keller went free and made a lot of money. The twin shadows of this catastrophe and the fact that the young Keller son was reported missing during the war dominate the action. The love affair of Chris Keller and Ann Deever, the bitterness of George Deever returned from the war to find his father in prison and his father's partner free, are all set in a structure of almost unbearable power. The climax showing the reaction of a son to his guilty father is fitting conclusion to a play electrifying in its intensity.



Performances are on the following dates at 8:00pm, unless otherwise noted:

Friday, July 4th
Saturday, July 5th
Friday, July 11
Saturday, July 12
Sunday, July 13 (2:00pm Matinee)
Friday, July 18
Saturday, July 19

Tickets may be purchased online at: <http://www.companyonstage.org/#!box-office/c1gzs>, or by calling the box office at 713-726-1219. For more information about Company OnStage, please visit www.companyonstage.org



The Company OnStage Theater was founded in 1977 by Joyce Randall McNally, a former associate director of the Alley Theatre, along with her husband Hank McNally. The theater moved to its present location in Westbury Square in 1980 and has proudly produced professional quality stage plays for both adult and children's audiences for 37 years.

Jackie Zehl & Teresa Lewis

COLDWELL BANKER UNITED, REALTORS 5111 BELLAIRE BLVD. BELLAIRE, TEXAS 77401



9415 Braewick Renovated 4/2/2
Island Kitchen, Stainless Appliances, & Luxurious Master Suite. \$479,900



6023 Dumfries Spacious 4/3/2+
Bonus Room, 2 Master Suites, Raised Ceilings, & Study. \$379,900



6122 Cheena Updated 3/2/2
Hardwood Floors, Granite & Stainless Appliances. \$319,900



6207 Rutherglenn Updated 3/2/2+
Study, Hardwood Floors, Remodeled Kitchen, & Vaulted Ceiling. \$307,000

JZEHL@CBUNITED.COM 713.349.7221

TLEWIS.HOUSTON@ATT.NET 713.349.7227



6006 Hummingbird Updated 3/2/2
Remodeled Master Bath, Huge Closet/Study, & Landscaped Yard. \$300,000



5422 Hummingbird 2/2/2+
Gamerroom, Stainless Appliances, Granite, & Remodeled Master Bath. \$274,900



10807 Burdine Updated 3/2/2
Remodeled Kitchen, Recent Windows, & Large Yard. \$259,900

Sold...

5810 Braesheather	5502 Rutherglenn
6115 Bankside	4986 Dumfries
5427 Kingfisher	5515 Cheltenham
5002 Yarwell	

Greenspace in Westbury

BEE INFORMED: Have Unwanted Bees?



Periodically, bee swarms land in our neighborhood. Some bees even take up residence in buildings. With the decline of bee pollinators necessary to our food supply (think fruit and vegetables as well as honey) you might think of calling bee keepers to remove bees as an alternative to exterminating them.

Should this happen to you or a neighbor, check the "Swarm Call List."

Below is some helpful info from their website. The Harris County

Beekeepers Association maintains a list of association members available to retrieve honeybee swarms or honeybee removals.

There are two types of unwanted bees. In beekeeper's terminology: Swarm Collection and Hive Removal. A SWARM is a group of bees that recently left another hive that are "hanging out" in a big group or ball looking for a new home. If there is honey comb or the bees are going in or out of a hole then it is a REMOVAL. When it gets hot, the bees will hang out around the opening to cool off. Removal generally costs money.

A proper removal will remove the bees and all the comb/hive associated with the bees. If all of the comb is not removed, it creates a major pest problem. If a honeybee swarm has moved inside a structure, such as a home or garage, there are beekeepers who can safely remove those bees. The State of Texas requires an annual permit to remove bees from a commercial building or inhabited structure. Swarm collections do not require a permit. Depending on distance traveled and location of bees, some beekeepers may collect swarms for free. Removals from a structure takes time, special equipment and tools. Most beekeepers with a State Permit who do removals will charge money. As with any specialty service, costs can vary a lot depending on difficulty and the person. A beekeeper also needs permission from the property owner.

For additional information and permitted swarm removal beekeepers, look under the 'Swarm Call List' at www.HarrisCountyBeekeepers.org



June Yard of the Month

Westbury 1
Judy White
5210 Kinglet

Westbury 2
5307 Stillbrooke

Westbury 3
Ron & Emily Smith
5806 Burlinghall

Westbury 4
Jose Moreno
5602 Ettrick

Westbury 5
Doug Stockman
10723 Braewick

Westbury South
Doyle & Judy Martin
12346 Nesmith

Parkwest 1
Betty Young
5622 Bankside

Parkwest 2
David & Teresa Olson
5747 Willowbend

Parkwest 3
Pablo & Sandra Bobbio
11606 Braewick



Phyllis Berenberg
MS, CCC-SLP
Speech-Language Pathologist
Phyllis.berenberg@pbspeechtherapy.com

3033 Chimney Rock Road
Suite 400
Houston, TX 77056
T 713.781.9191
F 713.781.6114
pbspeechtherapy.com

EW
Body & Foot Massage

- ◆ Foot Reflexology
- ◆ Body Massage
- ◆ Combination
- ◆ Pain Relief

Tel.: 281-581-8681
832-454-6205
Mon. - Sun.: 10am - 10pm

10539 S. Post Oak Rd.
Houston, TX 77035

Dr. Aileen Wang, DDS, MSD
Board Certified Orthodontist
Braces-Clear Braces-Invisalign
Located in Meyer Park Shopping Center
Most Insurances accepted

Summer Promotion!

Get \$500 off full treatment
(with this ad)

713-721-2426
4770 W. Bellfort St.
Houston, TX 77035

Wang Smiles Orthodontics

Concrete Crushing a Possibility at Willow Waterhole

Southern Crushed Concrete Applied for Permit at Gasmer Location

On May 28th an informational meeting sponsored by Texas Representative Borris Miles was held to discuss the Southern Crushed Concrete's application for a proposed Air Quality Standard Permit, Registration No. 119443L001 to allow concrete crushing at its Gasmer location. 132 people wrote to the TCEQ requesting a contested public hearing regarding this permit application. **As the Crier goes to print, no meeting has yet been scheduled. If one is scheduled we will post on our social media sites.**

Some concerns raised by nearby residents and users of the Willow Waterhole Conservation reserve:

Risks to Human Health

Concrete dust and particulate matter from the plant will negatively affect health of nearby residents. Concrete dust has been known to cause lung disease, exacerbate pre-existing pulmonary conditions and

exacerbate heart disease. Concrete dust will get into the air not only from the plant, but from trucks driving over the unpaved property, and from trucks bringing in material and idling on Gasmer Road waiting to enter the property.

In addition, there will be risks to the users of the Willow Waterhole Greenway Park. Many residents of the local area utilize the park for outdoor recreation. The park is located within 440 yards of the proposed plant. Users of this park will be exposed to the concrete dust and particulate matter generated from the plant. Since this plant is permitted to run for six days a week, 12 hours a day, it will be difficult for users of the park to escape the dust and noise caused by the plant and the trucks using this plant.

Environmental Effects on Willow Waterhole Conservation Reserve / Willow Waterhole Greenway Park

There will likely be environmental impacts (dust and water runoff) at the adjoining Willow Waterhole Conservation Reserve / Willow Waterhole Greenway Park. The

effluent from the water sprayed to reduce the dust from the plant and from storm water will exit the site and flow into the detention areas of the Willow Waterhole. Such effluent would be highly alkaline and would negatively affect the water quality in Willow Waterhole.

The dust and water runoff will negatively impact the Texas Prairie Dawn Flower, an endangered species that grows at the Willow Waterhole.

According to the Texas Administrative Code, Title 30, Part 1, Chapter 101, Subchapter A, Rule 101.4, states that, "No person shall discharge from any source whatsoever one or more air contaminants or combinations thereof, in such concentration and of such duration as are or may tend to be injurious to or adversely affect human health or welfare, animal life, vegetation, or property, or as to interfere with the normal use and enjoyment of animal life, vegetation, or property."

A map of the Willow Waterhole and where the proposed concrete facility will be located are shown below.



"Take an Hour of Your Time to Change Your Life!"

Every Tuesday Night @ 7PM

RSVP: 713 728 2300
Careers@waynemurray.net

Ask about our next career night webinar!

Weichert Realtors
Wayne Murray Properties

Each Location Independently Owned and Operated

LEADING REAL ESTATE COMPANIES OF THE WORLD

ALL TYPES IRRIGATION, INC.

OVER 30 YEARS EXPERIENCE
Design • Drainage • Installation • Service
Commercial • Residential

Emil Becker
T.I.L. #4415
D.L. #126891

Office: (713) 726-1636
Fax: (713) 726-8322
Cell: (713) 819-2872

Hunter Preferred Contractor

Happy Independence Day &
Thanks
to all those who serve



**COLDWELL
BANKER**
UNITED, REALTORS®

Tony & Charlseey Porcarello
We Know Westbury & We've Called It Home for 34yrs!

Tony: 713.898.1546 - tporcarello@yahoo.com
Charlseey: 713.898.1484 - charlseey@swbell.net
Office Direct Line: 713.349.7263

\$\$\$\$ Free Copy of Tax Return on CD \$\$\$\$\$
\$\$\$\$\$ Free Review of Prior Year Return \$\$\$\$\$\$

Schertz & Manning CPAs PLLC

Pam Schertz, CPA Diane Manning, CPA

Small Business Accounting & Tax Services

5322 West Bellfort, Suite 211 Houston TX 77035

281-974-2096

ASTRO PLUMBING

"YOUR PROFESSIONAL PLUMBER"
BEST PRICES • FREE ESTIMATES • SENIOR DISCOUNT

CALL JOHNNY
Cell: 713-256-0017

JOHN LEWIS ALL MAJOR CREDIT
M16312 CARDS ACCEPTED

 Legal Eagle
**CONTRACTORS
REMODELING**
Since 1974
www.legaleaglecontractors.com
Houston's **Most Trusted** contractors

 ACCREDITED
BUSINESS
BBB Rating: A+



Dan Bawden, Master Builder
713-723-8850
Come see our Showroom at
5008 Locust Street
at South Rice, Bellaire

**Design and Build
Kitchens ★ Baths ★ Additions**

Westbury's favorite
remodeler for over 25 years!

 NARI®
NATIONAL ASSOCIATION OF
THE REMODELING INDUSTRY

 GHBA
GREATER HOUSTON
BUILDERS ASSOCIATION
www.ghba.org

 Senior-focused
Remodeling
is our Specialty

BryanCalvinSmith.com

Westbury's largest...
Westbury's oldest...
Westbury's only...

Independent Insurance Agency
713-723-9353