



Westbury Crier

VOLUME 65, ISSUE 6

JUNE 2020

WHS Wins MTV Video Competition

Westbury High School graduating seniors learned during a video call with Michelle Obama that they are one of only 20 campuses in the nation and the only one in Texas to be named winners in a voter registration challenge co-chaired by the former first lady.



The competition was held by MTV and the national non-partisan group, When We All Vote (WWAV), which was launched in 2018 by Obama, along with celebrities like actor Tom Hanks and pro-basketball player Chris Paul. Obama told the students that the future of government is in their hands. "We are counting on you to keep spreading the word," Michelle Obama said. "I'm so proud of you and I'm blown away by your commitment and your focus."

A key part of the competition for high school students was the creation of a video urging their peers to be more civically responsible. Students from the winning schools will be featured



as special guests during a national virtual prom. MTV will partner to host a Prom-athon on Friday, May 22 that will kick off with the network airing prom-themed movies all day, followed by the virtual prom party, which will be live streamed with surprise celebrity guests and live performances.

Hillcroft Bridge Elevation Starting in June

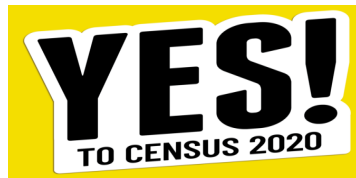
As noted in previous *Criers*, Harris County Flood Control District (HCFCD) plans to modify 3 local bridges along Brays Bayou as part of the efforts to reduce flooding in the Brays Bayou watershed. Work on the Hillcroft bridge will start first and is scheduled to begin in June. The work involves elevating the existing Hillcroft bridge higher and then modifying the companion intersections to match up with the modified Hillcroft bridge.

HCFCD says that the construction project will start on June 15. The bridge itself may not be immediately closed down due to staging and preparation needed before the lift begins. Work is slated to take about 3 months. Signs forewarning of impending construction and related detours should be posted around June 1.

Work on the Chimney Rock and South Rice bridges will happen after the Hillcroft work is completed. Both of these bridges will be completely replaced.

Plan your alternate routes now. Expect delays.

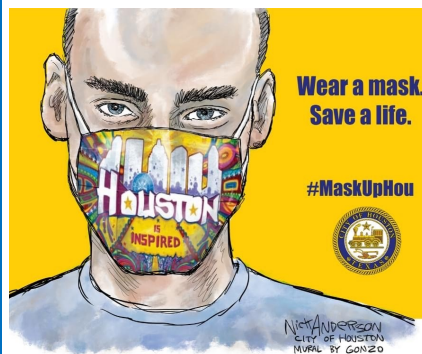
Fill Out Your Census 2020 Forms NOW



Every ten years we are required by the government to complete a Census form. You will have three options for responding either: online, phone, or mail. It is VERY fast and easy. Let's make Westbury the top responding neighborhood! For more info, see pg 17.

IN THIS ISSUE:

Board and City Contact	2
WCC President Message	3
Map of Westbury	4
Event/Trash Calendars	5
2020 Dues Form	7
Deed Restrictions	9
Yard of the Month	10-11
Weather Resources	12-13
Public Safety Informaton	14
Crime Stats	15
2020 Census	17
Hillcroft Sign	18
Trash Can Lease Fee	18
Farmer's Market	19



Confirmed Local Cases of Covid-19

Data provided by zip code at publichealthharriscountytexas.gov
77035—108 cases
77096—85 cases
Houston—6,188
*Data as of 5/21/20

HURRICANE SEASON IS HERE.

Are you prepared?

See pages 12 and 13 for information on flood insurance, weather resources, flood gages and more! Be prepared.

HEAVY TRASH

June 2020
Thursday, June 11
JUNK WASTE

July 2020
Thursday, July 9
TREE WASTE ONLY

IMPORTANT TRASH NOTICE—
The City is likely to run late on Heavy Trash pick-up. Heavy Trash dates are still the 2nd Thursday of each month. The City of Houston was a week late with May tree waste pick-up. Expect Delays.

RECYCLING

June 2020
Thursday, June 4
Thursday, June 18

July 2020
Thursday, July 2
Thursday, July 16
Thursday, July 30

IMPORTANT CONTACTS

WCC OFFICE

5322 W. Bellfort #100, Houston, TX 77035
Jennifer Edmondson.....WCC Office Manager
NOTARY SERVICES are NOT available at this time.

*****The office is CLOSED to the public. NO visitors.
Please call between 9AM-1PM Monday-Thursday**

CONTACT US

WCC Office Telephone.....713-723-5437
WCC Office Email.....westburycc@sbcglobal.net
Deed Restrictions.....westburycc@sbcglobal.net
WCC President.....wccpresident@westburycrier.com

**Visit our website at www.westburycrier.com
"Like" us on Facebook at Westbury Houston**

SECURITY

Pct. 5 Constables (WAP).....281-463-6666
Report property crimes, suspicious activity, and vacation watch
Emergency..... 911
Houston Police Dept. Non-Emergency..... 713-884-3131
Southwest HPD Station832-394-0400

CITY OF HOUSTON

District K CM, Martha Castex-Tatum.....832-393-3016
District C Council Member, Abbie Kamin.....832-393-3004
Deed Restriction Enforcement (City Legal).....832-393-6333
Platou Community Center.....713-726-7107
Mayor's Citizen Assistance Office.....832-393-0955
Houston Help & Information.....311
*For missed garbage pickup, water line breaks, potholes
sewer repairs, dead animals, traffic signals, heavy trash
violations, neighborhood nuisances, and other city services*

CENTERPOINT ENERGY

Electric outage.....713-207-2222
Suspected natural gas leak.....713-659-2111
Street light repairs.....713-207-2222
Make sure to give pole number

OTHER IMPORTANT CONTACTS

County Commissioner Rodney Ellis.....713-755-6111
Graffiti.....www.braysoaksmid.org
Shopping Cart Removal.....www.braysoaksmid.org
Brays Oaks Mgmt. District - Use "report a problem" link
Poison Control.....1-800-764-7661
Harris County Tax office.....713-368-2000
Harris County Appraisal District.....713-957-7800

2020 WCC BOARD OF DIRECTORS

Contact the Westbury Civic Club at 713-723-5437 or
westburycc@sbcglobal.net.

EXECUTIVE BOARD

President.....Cindy Chapman
wccpresident@westburycrier.com
Vice President.....Marcia Hartman
Secretary.....Katherine Wingfield
Treasurer.....Becky Edmondson

DIRECTORS AT LARGE

Communications.....Lauren Figard
Community Relations.....Tony Robert
Deed Restrictions..... Ray Mora
Flood Control & Infrastructure.....Jennifer Edmondson
Greenspace Beautification.....Mat Funk
Membership.....Susan Brock
Security.....Maria Cervantes
Volunteer Coordinator.....Robert Ellis-Montgomery

SECTION DIRECTORS

Westbury 1.....Franny Oxford
Westbury 2.....Lindsey Pollock
Westbury 3.....Jeff Benavides
Westbury 3.....VACANT
Westbury 4.....Eugene Sirls
Westbury 4.....VACANT
Westbury 5.....Virginia Livingston
Westbury 5.....Donna Strom
Westbury South.....Brandon Richard
Parkwest 1..... Angie Furnari
Parkwest 2.....Jeffrey Weiss
Parkwest 3.....Lisa Placke

NEWSLETTER INFORMATION

Published by.....Westbury Civic Club, Inc.
Editor-In-Chief..... Jennifer Edmondson
Edited by.....WCC Publication Committee
Advertising..... 713-723-5437/ westburycc@sbcglobal.net

Ad Disclaimer: *The WCC neither represents nor
endorses an advertisement in the newsletter. Perform
your own due diligence before contacting any advertiser.*



Westbury Civic Club , Inc.

A Message from the Westbury Civic Club President

The COVID-19 pandemic began impacting the Houston area in March. As a result, schools and many businesses closed or changed to "working at home" status. One side effect is that more families have been walking or biking on our neighborhood streets, and more children have been playing outside in yards. Please continue to drive slowly and carefully on our neighborhood streets. If you or your family members are in the streets, be extra careful and aware.

I want to congratulate all the new graduates this unusual school year! This will be a school year that you will always remember! I also want to congratulate the many families who unexpectedly found themselves finishing the school year at home. The educational journey had many challenges this spring and yet despite the challenges, the end of May has arrived and summer has begun. Yay!

Just because students are at home learning doesn't mean we don't have exciting good news about our local schools. Westbury High School students won a contest by MTV for a video they created encouraging students to vote. Only twenty schools nationwide were selected out of more than 1,600 high schools which entered the competition. Read more on page 1. The Parker Elementary School Chorus has been selected as one of four National Finalists in the Youth Division of the 2019-2020 American Prize National Competitions in the Performing Arts. Congratulations to both Parker and WHS!

After five years leading Westbury High School, Principal Susan Monaghan will be retiring later this summer. Becky Edmondson and I are on the committee which is interviewing candidates to replace the irreplaceable Susan Monaghan. WHS has made great improvements under the leadership of Principal Monaghan, and we want the next WHS principal to be equally committed to excellence and achievement.

Property crime has been increasing. The constables arrested one person in May for stealing items from a car at night. Also, career criminals have been released who might be mentally unstable. In May an elderly woman was knifed to death at 10 AM in the morning at South Gessner/Braeswood by a man with mental illness who was found incompetent for trial. The murder rate in Houston is almost double what it was last year at this time.

Please support the Westbury Area Patrol constables by sending money to pay for their services. If you have already contributed, please consider sending an additional contribution. Contact the constables if you observe criminal activity or are concerned about a situation that you think they should be monitoring. The dues form is on page 7.

The Westbury Civic Club office continues to operate remotely. Contact us by email or leave a phone message. We will be at the office in June more but will NOT be opening to the public at this time. Notary service is not available at this time.

The May Westbury Crier was delivered by WCC board members! It was an eye opening yet fun experience and many of us learned things we did not know about the neighborhood. One board member commented on how in their section, so many homes had really neat front porches yet they were all different. Another noted that in their section, many people did not use their front door. Mapping out sections, counting out correct distribution numbers, then actually delivering to 5,000 homes was a huge endeavor! Thank you to all the WCC board members and their families who helped! This month, we are pleased that the WHS baseball team and booster club are back delivering the June newsletter.

June 1 is the official start of hurricane season. See pages 12 and 13 for more information on flood insurance, weather resources, and flood gage information.

Have a fun, healthy and safe summer!

Cindy Chapman



Cindy Chapman and husband Walter helped deliver the May Westbury Crier

WCC Board Notes - May 2020

- ➔ The May board meeting was held online via Zoom and streamed live on the Westbury Houston Facebook page.
- ➔ Lindsey Pollock was elected to the board as Westbury 2 section director.
- ➔ Pubic Safety discussion. Main topics included property crimes, recent murder in SW Houston, group homes, and speeding.
- ➔ New large traffic sign installed on Hillcroft by the City of Houston. The WCC has requested more information from District K.
- ➔ HCFCD will start work on Hillcroft bridge elevation at Brays Bayou. Expect detours and road closures for several months.
- ➔ HCFCD has demolished 5 homes in Westbury since Harvey.
- ➔ Deed Restriction Revision committee will start meeting via Zoom in July or August. There has been much interest in this topic.
- ➔ Next WCC board meeting will be via Zoom on June 17. The meeting will be streamed LIVE on Westbury Houston Facebook.

I ♥ Westbury



**"COME" TO
THE NEXT**

*WCC Board Meeting
June 17, 2020, 7PM*

**Streamed LIVE on
Westbury Houston Facebook**

Platou Community Center at Chimney Rock Park

11655 Chimney Rock Rd
713-726-7107 * platou@houstonx.gov



- ➔ **Weekly Classes/Groups CANCELLED**
- ➔ **Playground, Swings & Basketball courts CLOSED**

The Platou Center is a location for Free Lunches for Children. Children must be in the car in order to receive lunch. Food will be placed in trunks. Drive thru only. 25 lunches available at each Community center in the City of Houston.

All activities, groups, and classes are cancelled at the Platou Center. The playground and basketballs courts are CLOSED in accordance to the Stay Home, Work Safe order. Please do not use the equipment.



Westbury Pool

- ➔ **NOT Open for Memorial Day**
- ➔ **No Date Set for Opening**

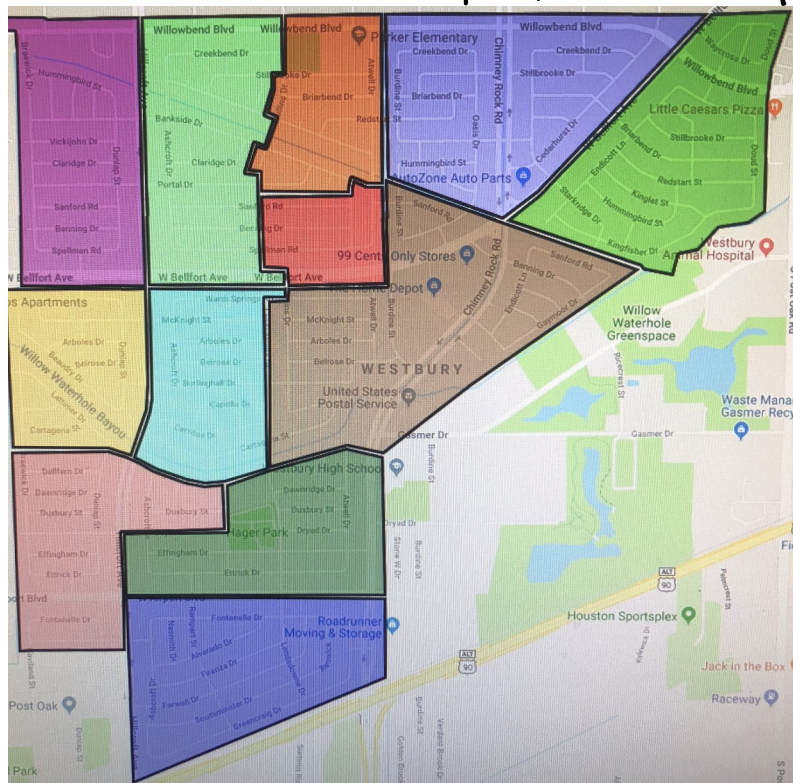
The City of Houston announced that the City public pools and splashpads would NOT be opening on Memorial Day weekend as normal. It is not known at this time when the City pools will open.

Meyer Library News

- ➔ **Meyer Library on W. Bellfort CLOSED Indefinitely; Replacement will be in Westbury**

City Council approved the appropriation of funds authorizing BRAVE Architecture Inc. to perform design and construction phase services for the new Houston Public Library at 5505 Belrose in Westbury (Nov 2019). The new location will be at the site of the old Post Office in Westbury. Stay tuned to future editions of the *Westbury Crier* for more information about the new library. We expect public meetings to be held in 2020.

Map of Westbury by Section



Westbury is the 2nd largest neighborhood in the City of Houston with 5,000 homes. One reason Westbury has remained such a viable and desirable neighborhood is because of the very active Westbury Civic Club. The WCC has been advocating and working hard for the neighborhood for over 60 years. We often refer to different sections when talking about current or upcoming city projects, crime, or events. This handy map can also be found on our website, www.westburycrier.com.

	Parkwest 1	198 homes
	Parkwest 2	443 homes
	Parkwest 3	311 homes
	Westbury 1	543 homes
	Westbury 2	530 homes
	Westbury 3	853 homes
	Westbury 4	834 homes
	Westbury 5	501 homes
	Westbury 5	150 homes
	Westbury South	563 homes

Why hire one agent when you can have your own team?



Learn more at www.pfrteam.com,
or call us at (832) 297-9038.

Licensed Realtors Angela Furnari & Lonnie Parker
Over 15 Yrs Combined Experience - Westbury Residents 10 Yrs



CHAMPIONS RE GROUP Parker Family Realty Team is a TREC registered team of the Champions RE Group brokerage, supervised by Brokers Adriana & Ignacio Osorio.

June 2020 Calendar Events/Meetings

June 1	Hurricane Season begins. Make sure you have flood insurance today!	
Mon 15	Brays Bayou Association Meeting	To Be Determined
Wed 17	WAIC/Super Neighborhood #37 Meeting Zoom Meeting—Live Stream on WAIC Houston Facebook	
Wed 17	WCC Board Meeting—via Zoom Live Stream on Westbury Houston Facebook	7PM
Sat 20	Audubon Society Bird Survey	To Be Determined
Sun 21	Happy Father's Day	
Tues	SW PIP Meeting	To Be Determined

ATTENTION HOMEOWNERS

Hurricane Season Starts June 1.
Keep Storm Drains Clear of Debris.
Have Your Trees Trimmed Now!
Get Flood Insurance TODAY!



Plumbco
MPL # 12248
Plumbing
 For all your Plumbing Installations & Repairs
713-721-PLUM (7586)
 Gary Bloch, Owner
Call the Best, we'll do the Rest!
www.plumbcohouston.com

All About Trash

Trash, yard waste, recycling, and heavy trash are picked up by the City of Houston.



Regular Household Trash

Pick-up is EVERY Thursday. Regular household trash goes into the black trash can.

Yard Waste

Pick-up is EVERY week either on Thursday or Saturday or any day the City decides to come by. Yard Waste MUST be placed in the correct City bio-degradable bags.



Recycling in Westbury

All of Westbury recycles on Schedule A. Recycling is every other week. Recycling goes into the green trash can.

June 2020

Thursday, June 4
Thursday, June 18

July 2020

Thursday, July 2
Thursday, July 16
Thursday, July 30

Heavy Trash Schedule

All of Westbury is on the same schedule for Heavy Trash. Pick-up is on the 2nd Thursday of every month. Odd months are TREE WASTE ONLY and even months are JUNK WASTE months.

June 2020

JUNK WASTE
Thursday, June 11

July 2020

TREE WASTE ONLY
Thursday, July 9

Important Trash & Recycling Info

- ♻️ Regular trash pickup is every Thursday.
- ♻️ Recycling is every other Thursday.
- ♻️ Heavy Trash is once a month, 2nd Thursday.
- ♻️ Yard waste is picked up on Saturdays.
- ♻️ Westbury is on Recycle Schedule A
- ♻️ NO Plastic Bags in green recycling bins
- ♻️ Trash cans need to be on curb by 7AM each Thursday
- ♻️ Trash cans must be removed by 10PM each Thursday
- ♻️ Trash cans must be placed at least 3 feet apart
- ♻️ Trash cans must be stored out of sight.
- ♻️ Yard waste MUST be in correct biodegradable bags with City logo
- ♻️ Call 311 for all trash questions and complaints
- ♻️ Nearby Trash Depositories and Recycling Centers:
SW Trash Depository/Recycling Ctr - 10785 SW Frwy
 Hours: Wed.—Sun. 9AM to 6PM;
 Accepts Junk Waste, Tree Waste & Recyclables.
- ♻️ **Environmental Service Center** - 11500 S. Post Oak
 Hours: Tues/Wed 9AM-3PM; 2nd Sat 9AM-1PM.
 Accepts Hazardous Household & Electronic Waste.
- ♻️ Refer to www.westburycrier.com or www.houstontx.gov for more trash and recycling information

WCC Board Personally Delivers the May Westbury Crier

The Westbury Civic Club board members and several of their family members personally delivered the May *Crier* to the doorsteps of all 5,000 Westbury homes. It was quite the endeavor to map and organize all the sections not to mention walking it all to deliver!

We are thankful that the June *Crier* is once again being delivered by the WHS Baseball team and booster club! We have a new appreciation of just how many homes there are in Westbury when the board is personally delivering the *Crier* to 5,000 homes!



5,000 Criers to Organize

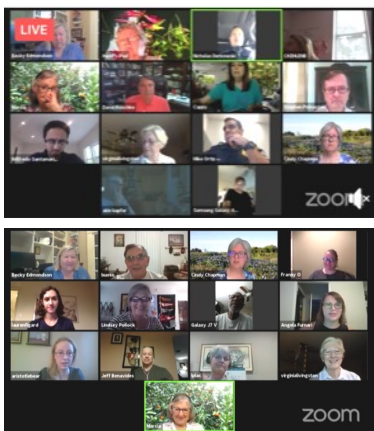


**Thank You
WCC
Board!**



Westbury Meetings Go Virtual

After not having meetings in March and April due to Covid-19, both the Westbury Civic Club and Westbury Area Improvement Corporation held their May board meetings on Zoom and streamed the meetings live on Facebook. Both meetings had quorums. It was nice to see one another again and get back to “normal.”



Why Pay your Westbury Civic Club Dues?

The Westbury Civic Club (WCC) works on: reducing neighborhood blight, enforcing deed restrictions, improving economic development, and advocating for our fair share of the City’s budget. We hold two semi-annual White Elephant Sales and host neighborhood events such as Keep Westbury Beautiful Day. We publish the award-winning Westbury Crier monthly. The WCC has one employee who works closely with our City Council Office and city departments to ensure timely responses to residents’ complaints, like Solid Waste problems. We also continue to work diligently with the City and the County to find real solutions to flooding along Willow Waterhole Bayou. The WCC is a strong advocate for the City to continue on schedule with storm drain reconstruction projects in Westbury with ReBuild Houston. This project was to start in 2020 but was delayed due to Harvey. **Please pay your Westbury Civic Club dues of \$50.**

Why Support the Westbury Area Patrol?

The largest program and biggest expenditure for the WCC is for the Westbury Area Patrol (WAP). The WCC has had a contract with Harris County Precinct 5 deputies since 1984. The WAP offers 24 hour coverage, vacation watches, home security checks, and alarm monitoring. The program provides high visibility, rapid response to emergency and non-emergency calls. Daily patrolling enables the deputies assigned to Westbury to become familiar with the neighborhood, thereby alerting them to “out of the ordinary” situations and ability to respond better and faster. WAP officers were instrumental in catching young criminals in Westbury South who were attacking and robbing elderly residents last year. Harris County Pct. 5 has a dedicated investigative unit that can be available if needed. The WCC has had to lower the number of deputies from 4 to 3 in 2019, and we could be in danger of losing the program if participation in this important program does not improve. Crime is increasing in Houston during this Covid-19 time, it is imperative that we keep our Constable patrol strong and active. **Please support the Westbury Area Patrol, \$285.**

WE’RE STILL HERE for Your Orthopedic Care



COVID-19 UPDATE – We are committed to you, even during these challenging times. Our orthopedic specialists are available to safely see patients **virtually** or **in person**, as needed.



VIDEO VISITS
for new and existing patients



IN-CLINIC
appointments, when needed



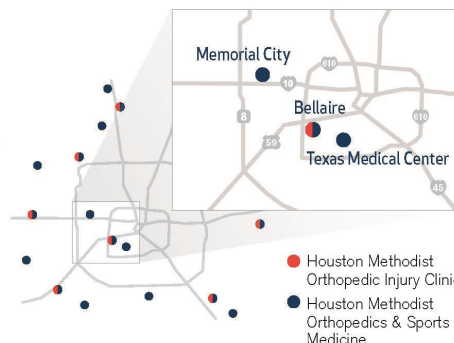
SAME-DAY
orthopedic injury appointments



ORTHOPEDIC IMAGING
(X-ray or MRI)



HOME DELIVERIES
(Crutches, braces, walking boots)



18 convenient locations across Greater Houston.

Visit houstonmethodist.org/orthopedics or call **713.790.3333** to find an orthopedic specialist.

Why Support the WCC?

Westbury is a unique neighborhood. While all 5,000 homes in our Westbury neighborhood have active deed restrictions, only 463 have mandatory assessments. This means the Westbury Civic Club heavily relies on voluntary financial contributions from residents.

Westbury has historically had strong voluntary support because residents understood the great benefits of the WCC and our programs. However, contributions to the Westbury Civic Club and to the Westbury Area Patrol were down in 2019. By working together, we can meet the challenges head on and keep our neighborhood the jewel that it is.

The total amount for the **2020 Voluntary Dues is \$335**. That is less than a dollar a day! The Westbury Civic Club dues are \$50 for the year. The WCC suggests a contribution of \$285 for the Westbury Area Patrol (a paid contract with Precinct 5 Constables).

Read more about why you should support the WCC and the Westbury Area Patrol to the left.

Why are Westbury Dues Mailed to a Dallas Address?

You are mailing your payments directly to our bank's processing center in Dallas. This allows your payments to be processed immediately. You may also drop off the payment directly to the WCC Office or pay online at www.westburycrier.com

NEW

Pay your 2020 dues ONLINE at westburycrier.com

The WCC website has been improved so that you can now pay either by PayPal or by credit card directly from our website. If you have already paid, please consider sending an additional contribution for the WAP Constable Patrol. If you have been intending to pay, now is the perfect time to make a payment. The full recommended payment for the Constable Patrol program is \$285.

Go to westburycrier.com then to the Dues and Assessments page.

The available payment options on the selection menu are:

- WCC Dues — \$50
- WCC Constable — \$285
- WCC Dues + Constable — \$50 + \$285 = \$335
- Additional Donation of \$100 or more

Once you get to the payment page you can opt to pay with your PayPal account, or pay directly by credit card.

If you want to pay an amount different than the options in the Shopping Cart on the WCC website, you can send a check to the address indicated on the Dues form below or you can use your PayPal account to send the amount you want by sending the money to our email address of westburyc@sbcbglobal.net. The WCC board continues to look at other ways to make paying the dues easier and more convenient.

During this challenging period, we know that some will not be able to contribute the amount you would like to pay for the Westbury Constable program. If you have the ability to send a payment, please help your friends and neighbors who may not be able to pay, so that the important service provided by the Westbury Constable program is able to continue. We would not ask unless it was important.

Please help us keep our Westbury Constable Program patrolling on our streets. Pay your 2020 dues online TODAY!

Please send this form in with your payment

2020 Westbury Civic Club Dues

Name(s) _____

Address _____

Home Phone _____ Work _____ Cell _____

E-mail _____

Make checks payable to:
Westbury Civic Club, Inc.

Mail to:
P.O. Box 975182
Dallas, TX 75397-5182

Online payment:
www.westburycrier.com
www.paypal.com to email
westburyc@sbcbglobal.net

Make sure to include your address

Westbury Civic Club Dues	\$50	\$
Westbury Area Patrol	\$285	\$
Subtotal	\$335	\$
Additional Contributions:		
Westbury Civic Club		\$
Westbury Area Patrol		\$
Total		\$

Thank you for supporting the Westbury Civic Club and our important programs. We can't do it without you! To contact the WCC Office, call 713-723-5437 or email westburyc@sbcbglobal.net.

By filling out this form, you are giving the WCC permission to send you communications. We DO not sell your information or give it out to other entities.

Want to send your support in multiple payments?

You may choose any amount to pay in any increment throughout the year.

Here are a few examples:

2 payments of \$167.50 is \$335/yr
3 payments of \$111.67 is \$335/yr
4 payments of \$83.75 is \$335/yr

ATTENTION: PARKWEST 1 & 2

Homes purchased in Parkwest 1 after Jan. 1, 1993 and Parkwest 2 after Jan 1, 1994 have mandatory assessments.

The 2020 Mandatory Assessments of \$246.75 were due 2/1/2020. Invoices have been mailed out.

Payment plans can be set up for homes that have a past due balance. Please contact the WCC Office at 713-723-5437.

The WCC does NOT receive payments from escrow accounts or any other source. If you receive a Mandatory Assessment bill, it was due by 2-1-2020.

An attorney will be contacted for accounts past due.

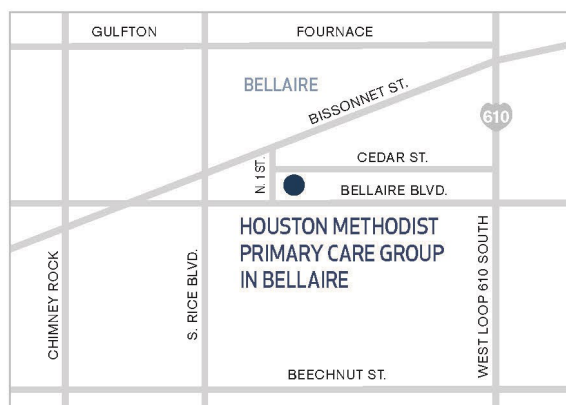
SAFELY SEEING NEW AND EXISTING PATIENTS VIRTUALLY AND IN PERSON

Leading primary care IN YOUR NEIGHBORHOOD

Houston Methodist Primary Care Group in Bellaire

Our primary care physicians specialize in prevention, diagnosis and treatment of chronic and acute conditions. We provide convenient access to quality primary care for patients of all ages. Our expertise includes:

- Acute and chronic care
- Depression and anxiety
- Diabetes management
- High blood pressure
- High cholesterol
- Preventive care
- Routine immunizations and health screenings
- Smoking cessation
- Thyroid concerns
- Women's health



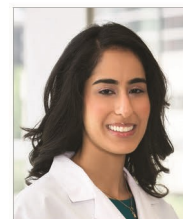
SCHEDULE AN APPOINTMENT

4710 Bellaire Blvd., Suite 250
Bellaire, TX 77401

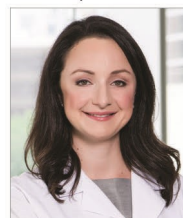
houstonmethodist.org/pcg/bellaire
713.394.6638



**Anthony Brown,
MD, MPH**
Family Medicine



**Anjali
Kohli, MD**
Internal Medicine



**Margaret
Manus, MD**
Internal Medicine



**Bhuvana
Muthuswamy, MD**
Internal Medicine



**Vinisha J.
Patel, MD**
Internal Medicine



**Shari
Rubin, MD**
Internal Medicine



**Joshua D.
Septimus, MD, FACP**
Internal Medicine

HOUSTON
Methodist[®]
PRIMARY CARE GROUP



All About Deed Restrictions & Nuisances

Heavy Trash Violations

One of the most common complaints to the WCC office is about heavy trash violations. The violation is either trash is out **too early** or is the **wrong type for that month**.

JUNK WASTE can ONLY be put on the curb on every other month—February, April, June, August, October, and December.

For all of Westbury, heavy trash is picked up on the **SECOND THURSDAY of each month**. You can only place items on the curb starting the weekend before the scheduled pick-up date.

Report heavy trash violations to 311 either via phone, 311 mobile app, or emailing 311@houstontx.gov. If you have a neighbor that is a chronic heavy trash violator, report to 311 then to the WCC office with the SR number so we can follow up with District K.

Keep Westbury Beautiful and Clean!

Westbury is a Deed Restricted Neighborhood

ALL homes in Westbury have active deed restrictions. There are over 30 sets for the 9 sections and 5,000 homes in Westbury. Why do we have deed restrictions? To protect and maintain our neighborhood for the benefit of all residents. The City of Houston does not have any zoning or rules on where commercial business can be located. Deed restrictions help maintain our neighborhood as a neighborhood. All lots in Westbury must be residential usage.

When you bought your home, you should have received a copy of your deed restrictions. Certified copies of the deed restrictions can be obtained at the County Clerk office downtown for a fee. The WCC office has copies of the deed restrictions by section online at www.westburycrier.com. You will need to know your legal address to know which set applies to you. An easy way to find your legal address is to look up your property on Harris County Appraisal District (HCAD) website, www.hcad.org.

Parking Violation Safe Passable Sidewalk

When you park your vehicle in your driveway, do you block the sidewalk? Did you know it is a violation of city ordinance to block a public sidewalk? You can be ticketed and have to pay a fine for parking your vehicle so that it blocks a public sidewalk.

Be a good neighbor and keep the sidewalks open for pedestrians. Avoid having to pay a parking violation ticket.



Updating Westbury Deed Restrictions

Deed Restriction Revision Action Group Formed

UPDATE—Thank you to all the residents that reached out about joining the Revision Action Group. The group will meet via Zoom in July/August to get started. Look in future *Criers* for more information.

Westbury's deed restrictions are old and need to be updated. While they are still active and still have validity, they are slowly losing their original meaning in today's legal climate. There are many reasons to update the deed restrictions. It is no longer 1958. How people live and use their homes is different in 2020. While it is nice that no one can hang a visible clothes line in their front yard, I am sure the residents of Westbury 5 East of Hillcroft would like the option to build a 2 story home. They are the ONLY section that cannot. With home elevations and new home construction on the rise, a better set of deed restrictions and guidelines are needed.

The Westbury Civic Club worked with residents in Parkwest 1 and 2 in the 1990s and successfully updated and modernized their deed restrictions with changes such as allowing two story homes, three car garages, and mandatory assessments. This process can be long and frustrating. Later deed restrictions revisions over the years have stalled, failed, and fizzled out.

It is time to seriously think of Westbury's future. 2020 is the time to move Westbury forward and update our aging deed restrictions. The first step is to get a group of active residents who are dedicated to seeing the process all the way through. This group will first meet to get their bearings, then start to break down the choices of how to tackle a massive deed restrictions revision for 5,000 homes. Even Parkwest 1 and 2 need to be updated, despite the changes made in the 90s. We will do surveys, in the *Crier* and online, and hold several public meetings to get feedback from residents.

**Copies of Deed Restrictions Available
Online at www.westburycrier.com**



Top Producer

Lifelong Westbury Resident



Selling, Buying, Investing

YOUR Real Estate Expert

Donna Strom

Text or Call 713-859-5296

donna@camelothouston.com

Spring Westbury Yard of the Month

March 2020 Winners

Parkwest 1

Kaylene Carter

5542 Hummingbird

Parkwest 3

Jose & Melinda Hoyos

6018 Cerritos

Westbury 1

Sharon Kuperman

5243 Kingfisher

Westbury 2

C. Allen & T. Melton

11123 Cedarhurst

Westbury 3

Kelly Harlan & Kenneth Shrum

5515 McKnight

Westbury 4

Homeowners

5735 Effingham

Westbury 5

Douglas & Laura Chung

11122 Atwell

Westbury South

Martha Martinez

12403 Landsdowne



Westbury 1 March Winner



Parkwest 1 March Winner



Westbury South March Winner

April 2020 Winners

Parkwest 3

Joe & Jeanell Sanders

6002 Warm Springs

Westbury 1

Liubor & Mark Wernick

5039 Stillbrooke

Westbury 2

Sergio & Sara Garza

10802 Oasis

Westbury 3

Stanley Malbrough-Smith & David Smith

5231 Spellman

Westbury 4

M. Villarreal

5859 Ettrick

Westbury 5

Kathryn Morton

11103 Atwell

Westbury South

Lilian & Bartolo Zelaya

Do you want to win Yard of the Month?

Do you think your yard should win Yard of the Month?

Do you want to nominate your neighbor's yard?

The judges drive their assigned sections around the 15th of each month. Make sure your yard looks good and you have NO deed restriction violations, especially visible trash cans.

Email Robert Montgomery at robertsmontgomery@icloud.com. He will forward the nominations to the correct judge for your section.

The Westbury Crier editor would like to apologize to the March and April Yard of the Month winners as well as the judges for forgetting to include YOM in the past two Criers. Thank you for understanding!

Spring Westbury Yard of the Month

May 2020 Winners

Parkwest 1
Dean & June Thomas
5514 Briarbend

Parkwest 3
Jenny Conkin
5920 McKnight

Westbury 1
Carolyn Weibye
5227 Kingfisher

Westbury 2
Robert A. Kidd
10622 Burdine

Westbury 3
Roger & Linda Fernandez
5718 Warm Springs

Westbury 4
Jacques Davidson
5730 Ettrick

Westbury 5
Andrew & Chrisin Bayer
11111 Atwell

Westbury South
Jesse & Norma Tunchez
5627 W. Airport



Westbury 1 May Winner



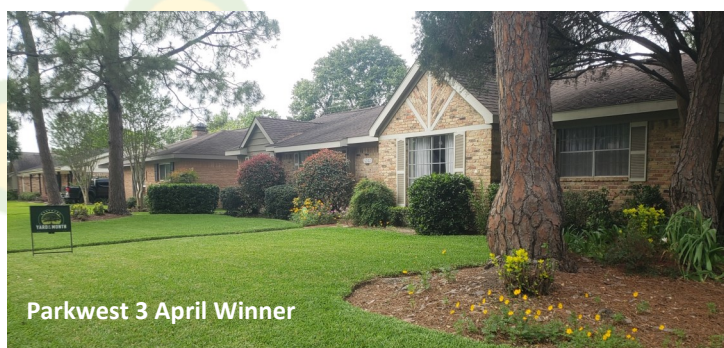
Westbury 3 May Winner



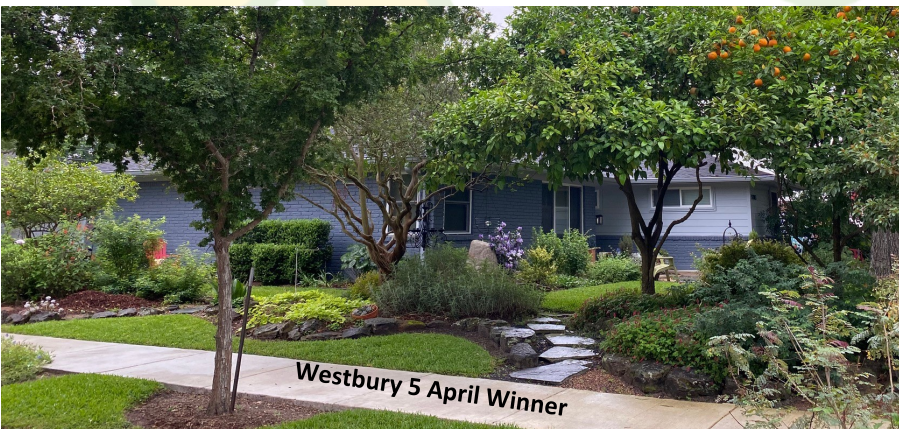
Parkwest 1 May Winner



Parkwest 3 May Winner



Parkwest 3 April Winner



Westbury 5 April Winner



Westbury South April Winner

Weather Wary in Westbury

Does rain make you nervous? Are you unsure on the weather forecasts? Does listening to the news weather reports make you panic? You are not alone. Houston weather over the past couple years has made us all very wary, if not scared, of storms.



Houston gets rain. The trick is to know where and how much. There are many good websites and apps available that can help guide you before rain events or during them. One good piece of advice is to look for warnings and alerts from the actual source, for example the National Hurricane Center. This is not a complete list but just one meant to help guide you and add to your storm preparations.

Harris County Flood Warning System

www.harriscountyfws.org

This website is extremely helpful **during** a rain event. It shows real time bayou levels and rainfall amounts at gages that have been installed along the bayous. **Gage 445** is located in Westbury on the Willow Waterhole Bayou at the Landsdowne bridge. Gage 440 is located on Brays Bayou at S. Rice. A new tool just introduced is the ability to sign up for Flood Alerts by gage. Another tool available on the website is a Flood Inundation real time map that can help residents make critical decisions regarding life and property during events. If you are ever curious about the rainfall amounts and rate, you can also look up historical data.

National Hurricane Center

www.nhc.noaa.gov

If there is a chance of a named storm or there is a current named storm, the National Hurricane Center is your go-to source. During an active named storm, there will be multiple updates issued along with many different maps. These include the wind probability, the storm track cone, storm surge, tides, and many more.

Hype-free Weather Forecast

www.spacecityweather.com

This website is dedicated to covering Houston weather news and forecasting with accuracy and without hype. Space City Weather was founded in October 2015. This website isn't about making money or getting "hits", it is truly about providing residents and business owners a quality forecast to make informed decisions. Eric Berger and Matt Lanza provide the best forecast for Houston weather. You can also follow them on Facebook.

Be Alert. Be Weather Smart.

Sign Up for Power Outage Alerts

A helpful alert service about Centerpoint power outages is Power Alert Service (PAS) which can notify you, friends and family of a power outage, its restoration progress, and when the electricity comes back on.

Thanks to upgrades, you can send alerts to up to five text, five emails and five phone numbers.

<https://www.centerpointenergy.com>

Do You Have Flood Insurance?

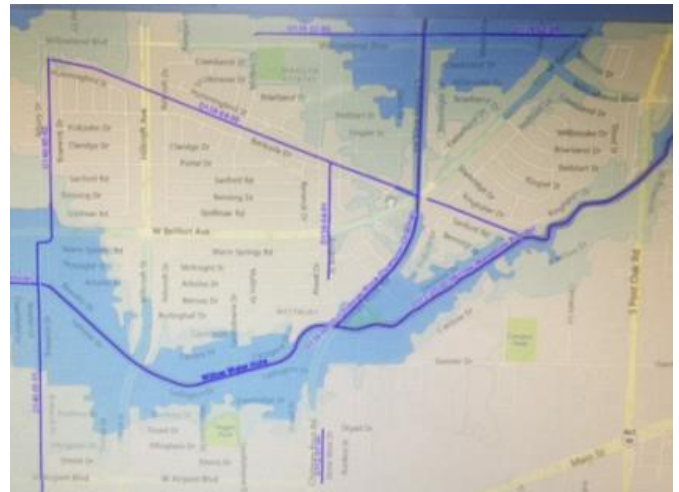
While the majority of Westbury is not in the 100 or 500 year flood plains, floods can happen anywhere given the right circumstances. Only 15% of the structures that flooded during Harvey had flood insurance. Did you know the record for rainfall in a 24 hour period is held in nearby Alvin, Texas? 44 inches! The good news is that if you are not in a flood plain, then you can buy peace of mind for just a few hundred dollars a year.

The Harris County Flood Control District advises that EVERY HOME in Harris County should have flood insurance, whether or not you live in a mapped flood plain. The current flood plain maps do not fully warn where flooding might occur. Homeowner's policies do not include flood coverage, and because no insurance company wanted to write an unprofitable line of business, the federal government stepped in. In 1968, Congress created the National Flood Insurance Program (NFIP), which offers flood insurance to homeowners, renters, and business owners.

As you shop for a flood policy, you may be confused, as many are, about whether the policy is through FEMA or an insurance company. In 1983, the Write Your Own (WYO) Program began and is a cooperative undertaking between the private insurance industry and FEMA. The WYO Program allows participating property and casualty insurance companies to write and service the Standard Flood Insurance Policy in their own names. The companies receive an expense allowance (approx. 30% of premium) for policies written and claims processed, while the federal government retains responsibility for underwriting losses. The WYO Program operates as part of the NFIP and is subject to its rules and regulations.

If you don't have flood insurance, ask your insurance agent for a quote. Make sure that you check the coverages and understand EXACTLY what you are purchasing. If you don't have an insurance agent, then look for one online at the FEMA site. Put in your address and it will give you a local agent. <https://www.floodsmart.gov/floodsmart>

PLEASE NOTE— You cannot purchase flood insurance when a named storm in the Gulf of Mexico. Once purchased, there is a 30 day waiting period before coverage takes effect.



Flood plains in Westbury. Blue is 100 Year Flood Plain and light green is 500 Year Flood Plain

Sign Up for Alerts from The City



Sometimes it is easy to become complacent with weather alerts, but emails, texts, and phone calls sent from the City Alert System definitely were accurate this time. If you haven't signed up to receive City alerts, you may do so with AlertHouston. Timely information during emergencies is important. AlertHouston delivers critical information to Houston residents regarding current conditions, expected impacts, and protective actions to keep themselves and their loved ones safe.

These alerts are issued by City of Houston Office of Emergency Management (OEM). Messages are issued for citywide and neighborhood level emergencies. They are sent through email and social media (Facebook, Twitter and Nextdoor). You must opt-in to receive these alerts.

More information is available at www.houstonemergency.org/alerts/

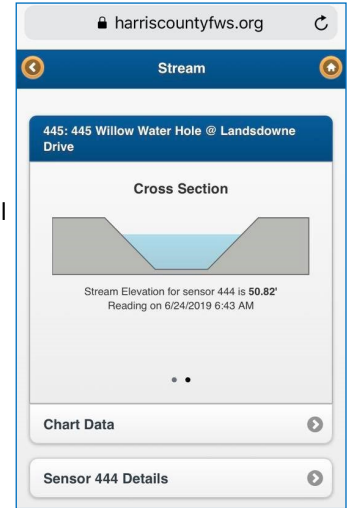
Register for emergency alerts through email, text message, voice call, or mobile app push notification. You may download the Everbridge app free of charge from the Apple or Andoid app store. Most alerts are geo-targeted; subscribers with loved ones around the city may register up to five physical addresses per contact record.

Sign up for Flood Gage Warning Alerts

The regional Flood Warning System measures rainfall and monitors water levels in bayous, creeks, and rivers on a real-time basis to inform area residents of potential flooding conditions. This system relies on a network of 250 gage stations that have been strategically placed throughout a Harris and surrounding counties. Westbury has one of these gages located on the Willow Waterhole Bayou (#445). This information is available at www.harriscountyfws.org.

You can now sign up for alerts on a specific gages near your home or work. You can receive default rainfall and water level alerts or create custom water alerts.

The Willow Waterhole Bayou at Landsdowne rises quickly and it's imperative to surrounding homeowners to know what is happening. It is important to remember that this gage will likely stay at a certain level (approximately 51-52ft) when flood waters are going over the weirs downstream at the Willow Waterhole detention basins.



Alert received on June 24

Willow Waterhole Bayou (WWB) Gages

#445 – WWB at Landsdowne (Westbury)
 #435 – WWB at Willowbend

Brays Bayou (BB) Gages

#440 – BB at Rice Ave.
 #460 – BB at S. Gessner
 #465 – BB at Beltway 8

When it Rains in Houston

If you would like to understand Houston's flooding problem, there is a 15 minute film produced back in 1979 that is as timely today as it was 41 years ago. The film is part of the Texas Archive of the Moving Image.



This film, narrated by actor Carle Bensen, presents Houstonians with a comprehensive look at their city's flood control infrastructure, put in place to deal with the heavy rains typical to the area. Due to natural factors such as a flat, low-lying topography and high clay content in the soil, as well as rapid urbanization, Houston has a history of flooding, and flood control projects, dating back as far as 1908. The film educates viewers about flood control systems in place, discussing strengths and weaknesses of the flood drain, storm sewer, bayou, channel, and pond system. It also recounts the physical and economic damage caused by flooding in the 1970s, the consequence of failure to continue to implement flood control improvements. In the end, the film is a plea to get back to the plan, urging the public to take action by voting on bond and tax allocations for drainage projects, and contacting their public officials to support the issues. Part of the TAMI library via the Patrick S. Coakley, Jr. Collection.

The film is available at http://www.texasarchive.org/library/index.php?title=When_it_Rains&p=video1&b=0.



Maxx Gonzalez

El Arte D'Pintar
Expert Int./Ext. Paint
832-212-0739
maxx@maxxgonzalez.net
www.maxxgonzalez.net



◆ Sheetrock Repair
◆ Stain

◆ Fancy Texture
◆ Walls
◆ Faux Finishing

PEROT PLUMBER

Call Chris

713-666-7500

Expert Plumbing Repairs
 Sewer Repairs
 Water Heaters
 MPLS17909




Public Safety Information

E-Commerce Safe Zone Locations Arrest after Theft from Vehicle

Two E-Commerce "Safe Zone" locations have been set up nearby at the HPD S. Gessner substation and the HPD Southwest substation, where people can securely complete purchases of items they ordered on Craig's List, Facebook, and similar websites.



Using a Safe Zone to complete a purchase in a police facility helps buyers avoid falling victim to the kind of scams and robberies that have occasionally taken place around the country where buyers expected to complete a private transaction with an online seller.

The HPD Safe Zone is marked by signage near the entrance to the substation and provides a location where individuals can conduct e-commerce transactions. "The location is in the view of the station's video surveillance cameras. The Brays Oaks Management District (BOMD) and the Five Corners Management District are pleased to provide these locations as an option for the use of residents and businesses in the District," says BOMD Executive Director, Ben Brewer.

- ➔ **HPD S. Gessner Substation**
8605 Westplace
- ➔ **HPD SW Substation**
13097 Nitida

A burglar was arrested in Westbury on May 15 after being observed on a RING doorbell camera entering an unlocked vehicle in Westbury. The suspect was reported to the Constables. As a result, the suspect was caught by the Westbury Area Patrol Constables with stolen goods and was arrested.

The Westbury Area Patrol (WAP) by Precinct 5 Constables is a program paid for by the Westbury Civic Club. This program is even more important during these current conditions when criminals are roaming our city streets. If you have not already contributed, please do so immediately. If you have already contributed, please consider making an additional contribution. See page 7 for the dues form and exciting information on how to pay online!

Violent Crimes and Group Care Homes

Violent crime is working its way into and around our area. The case of Rosalie Cook, an 80 year old resident of nearby Braeburn Valley West, who was murdered on May 18 at a nearby Walgreens by a man recently released from jail, mentally incompetent to stand trial, career criminal with 67 charges lodged against him in 14 years. He was released to a personal care home on May 1 (not in Westbury).

In April, a man was assaulted and died of those injuries in the parking lot of the Meyer Park Walmart. Arrested for this heinous crime were three 18-19 year old thugs with prior records. One had even just been arrested 2 months earlier and immediately released.

In December, a murder took place at a "care home" on Willowbend. A violent criminal with 30 prior charges was found mentally incompetent to stand trial and released to a home in our neighborhood. He stabbed another resident of the home who had 7 arrests and was also mentally incompetent to stand trial.

Our mental health and criminal justice system appears to be failing not only the safety of the general public, but the criminals, too. What can you do? Advocate for reform. Stop criminals from being dumped into our Southwest Houston neighborhood by reporting homes that you suspect may be group homes to the civic club office. Westbury does have some well-run, long time care homes, but others, are a danger to our neighborhood's safety. One caveat is that it takes a long time to get things done, as neighbors had reported the Willowbend house. It is still important to make the effort.

WESTBURY CHRISTIAN
EST. 1975

Educating Pre-K3 through 12th Grade for over 45 years!

Accepting Applications for Enrollment

THE PATH TO SUCCESS BEGINS *Here*

westburychristian.org

WESTBURY CHRISTIAN SUMMER CAMP

SUMMER ASAP!

A summer camp that will nourish your student's mind, body, & spirit!

TIME TRAVEL, SPORTS, STEM, ARTS

May 26 to July 31
For Ages 3 - 10yrs

For more information:

- westburychristian.org/summerprograms
- summerasap@westburychristian.org
- 713-551-8100
- 10420 Hillcroft St. Houston, TX. 77096

FIELD TRIPS, NOW ENROLLING SUMMER 2020, VBS DAILY, SWIM

Crime Statistics for Westbury Super Neighborhood

April 27—May 21, 2020

Crime in Westbury Single Family Homes

KEY

Block	Street	Crime	Date	Time	Section of W
12400	Atwell	Auto Theft	5/7	4AM	Westbury South
6000	Beaudry	Burglary, Breaking & Entering	4/28	2PM	Parkwest 3
6000	Beaudry	Destruction, Damage, Vandalism	5/9	8PM	Parkwest 3
5800	Burglinghall	Destruction, Damage, Vandalism	5/10	1AM	Westbury 3
5600	Cerritos	Destruction, Damage, Vandalism	5/5	3PM	Westbury 3
11500	Gaymoor	Destruction, Damage, Vandalism	5/4	5AM	Westbury 3
11500	Gaymoor	Theft from Motor Vehicle	5/11	7PM	Westbury 3
11500	Hillcroft	Theft from Motor Vehicle	5/9	11PM	Parkwest 3
11900	Hillcroft	Burglary, Breaking & Entering	4/30	4PM	Westbury 4
11900	Hillcroft	Burglary, Breaking & Entering	5/8	2PM	Westbury 4
5600	Hummingbird	Simple Assault	4/27	4PM	Parkwest 1
5600	Ludington	Burglary, Breaking & Entering	5/20	3PM	Westbury 4
5900	Ludington	Simple Assault	5/17	9AM	Westbury 4
10800	Moonlight	Destruction, Damage, Vandalism	5/15	10PM	Westbury 2
10900	Oasis	Destruction, Damage, Vandalism	5/21	1AM	Westbury 2
5800	Spellman	Destruction, Damage, Vandalism	5/20	11AM	Parkwest 2
6000	Warm Springs	Destruction, Damage, Vandalism	5/10	2AM	Parkwest 3

- Theft from Motor Vehicle
- Auto Theft
- Property Crime
- Burglary
- Simple Assault
- Theft of Motor Vehicle Parts

The crimes listed took place between April 27 thru May 21. They are in alphabetical order by street. The crimes are highlighted by type. Please see key above.

Crime by the Numbers

Crime Type	Homes	Apts./TH	Comm./Business	Park/School
Aggravated Assault	0	4	2	0
Theft from Motor Vehicle	2	3	1	0
Burglary, Breaking & Entering	4	3	0	0
Robbery	0	2	0	0
Simple Assault	2	15	1	0
Shoplifting	0	0	9	0
Drugs, Narcotics	0	1	0	1
Vandalism, Damage	8	10	0	1
Auto Theft	1	3	0	0
Fire Arson	0	1	0	0
Disorderly Conduct	0	0	0	0
Theft of Vehicle Parts	0	0	1	0
Theft Embezzlement	0	0	1	0
TOTAL	17	42	15	2

Support the Westbury Area Patrol TODAY



The WCC contracts with Harris Country Precinct 5 Constables for our Westbury Area Patrol (WAP) program. A large part of the funds paid to Precinct 5 are paid VOLUNTARILY by residents who do not have mandatory assessments. If you appreciate this vital service, please consider showing your appreciation by sending a contribution TODAY for the WAP security patrol.

The WCC currently has a contract for 3 deputies to patrol Westbury and we would like to increase this number. We can only do this by raising additional funding. A neighborhood our size should have more deputies.

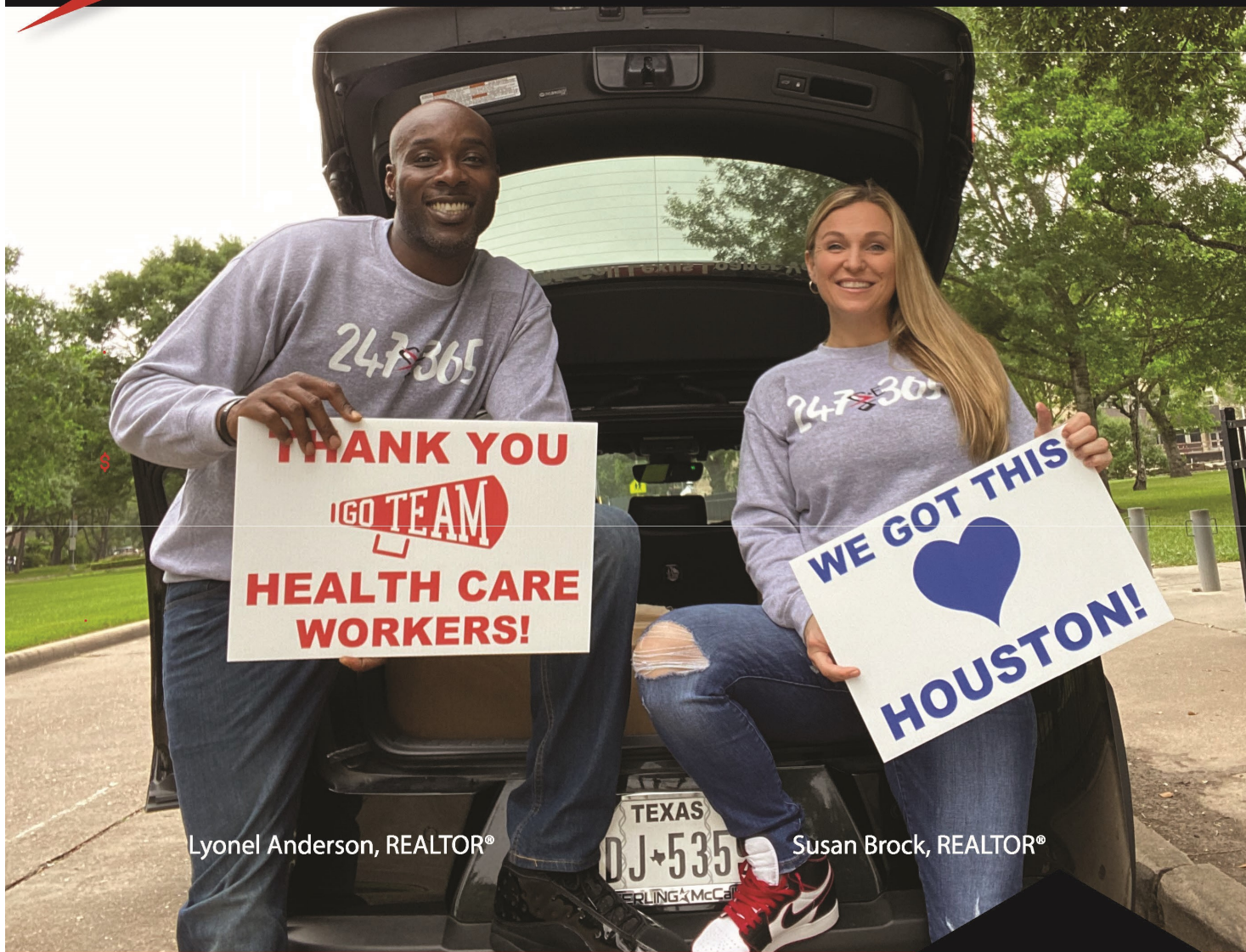
See pages 6 & 7 for the dues form including information about how to send an online payment by PayPal or where to send your checks to our bank deposit lockbox in Dallas. Thank you for your support!

SW HPD Station
832-394-0400

Westbury Area Patrol
281-463-6666

HPD Non-Emergency
713-884-3131

WESTBURY STRONG!



Lyonel Anderson, REALTOR®

Susan Brock, REALTOR®

We're All In This TOGETHER

Get your free yard sign delivered to your door and show your community pride! Just reach out!

713.922.0877

Thinking of making a move? For the most up-to-date market information, visit: westburyvalues.com

BROCK *and*
FOSTER
> Real Estate

It's Time to be Counted! US Census 2020

How many people live here in the Westbury neighborhood? How do we find out? The government does a population count every ten years, called a "census", and this is a census year. Every residence should have received an official Census Bureau census request by mail in mid-March with detailed information on how to respond to the 2020 Census. There are three ways to respond to the 2020 Census.

- ➔ **Online**
- ➔ **By phone**
- ➔ **By mail**



Why respond? It's important that the count be correct because it affects funding, schools, voting districts, developers and others who rely on the data to make decisions.

You can track response rates in Westbury at 2020census.gov.

Location	Census Tract	Pct.
Westbury 1	4206	68.7%
Westbury 3 & 4 Westbury South	4221	64.4%
Westbury 4	4223.02	60.8%
Westbury 5	4224.03	56.7%
Parkwest 1 & 2 Westbury 2 & 5	4220	73.8%
Parkwest 3	4224.04	32.8%

*Data as of April 27, 2020

Ten years ago, it is estimated that zip code 77035 was "under reported" by 24%. Zip code 77096 was "under reported" at 12%. It is very important for Westbury, the City of Houston, and our state that as many people as possible here in Westbury get COUNTED.

Food Distribution Sites in Westbury during COVID-19



Platoon Community Center
11655 Chimney Rock

A free meal (lunch and a snack) for children 1 – 18 years old is being distributed by the City of Houston at City community centers. Child must be present to receive a meal. Monday through Friday from 1PM to 3PM.

HISD Locations—Sites Vary

When schools closed, HISD, along with the Houston Food Bank, began distributing food to families at various campus throughout Houston. HISD has been holding weekly mass community give-away events since the end of April. Check the HISD blog for more up to date information.

HISD currently has 25 campuses that each week distribute 500 bags of food per site. Westbury High School is typically a distribution site. Check Houston ISD blog for up to date information about locations and times. They normally announced one week in advance.

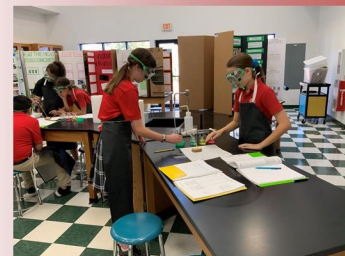
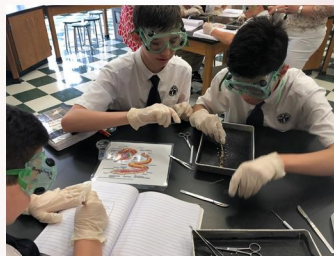
Playgrounds & Basketball Courts Still CLOSED

All the playgrounds, basketball courts, and swing sets are closed at all City and County parks. No group sports such as soccer are allowed. There are signs and caution tape at all Westbury area playgrounds and swing sets. The City has removed the basketball goals at all the parks due to continued usage. Please stay off the park equipment.



St. Thomas More Parish School

5927 Wigton Dr.
Houston, Texas 77096
713-729-3434



Register NOW for 2020-2021!
VISIT US FOR A TOUR!
CALL 713-729-3434

For more information, visit our website,
www.stthomasmore-school.org

St. Thomas More Parish School is conveniently located in the Maplewood S/N neighborhood in Southwest Houston.

Grades PreK 3—8th Grade

- ➔ Core Curriculum
- ➔ STREAM program - Science, Technology, Religion, Engineering, Art, and Math
- ➔ Hands-on learning
- ➔ Extended Care (before/after school) is available.
- ➔ Visit our website www.stthomasmore-school.org for more information.

What is that Huge Sign on Hillcroft?

If you have travelled North on Hillcroft from S. Main you may have noticed a giant new electronic sign installed in our esplanade. The WCC was shocked to see this sign. We were never notified or told anything about this. We have made several inquiries to the City regarding this sign as it seems very out of place in our residential neighborhood.



After some independent research, it appears the sign is part of a widespread traffic program that includes installing 91 of these signs throughout the City. WCC leaders would like to know how and why Hillcroft was chosen and why we were not informed. The sign is obstructed by our trees in the esplanade and we want to ensure they are not cut down. We hope to have more information in next month's *Crier*.

NEW Trash Bin Lease Fee

On May 13, Houston City Council voted to approve a NEW annual lease fee of \$1.14 on garbage bins provided by the city. The fee is 57 cents per city garbage bin, and since most homes have 2 bins, this totals \$1.14 per month. The fee will show up on city water bills on July 1. District K Council member Martha Castex-Tatum voted against the new fee.

The intent of the fee is to provide funds to keep enough containers in stock, maintenance of existing bins, and personnel to provide pickup services. The fee would bring in about \$421,000 per month for the Solid Waste Department. This is not a garbage collection fee, although Houston is the only major Texas city without a garage collection fee. In 2019, Austin charged a monthly fee between \$25 to \$50, Dallas charged \$27 per month, Ft. Worth charged between \$12.50 to \$23,00, and San Antonio charged about \$20 per month.

Only RAIN in the DRAIN!

As it rains in Westbury, water begins to build up along the street edges and gutters. It's here that it begins its long journey to the sea. The first destination on this journey is to the storm drain inlet on your street. Clearing the path to the storm drains is essential. Once it reaches the inlet, it flows into the storm drains and eventually ends up in one of the drainage ditches or Willow Waterhole Bayou, then off to Brays Bayou, then the Houston Ship Channel and ultimately to the Gulf of Mexico.

It's very important to prevent debris from blocking the flow of the water to the storm drain inlet. It is vital to keep the water flowing in the storm drain pipes under the streets.

Solid debris takes up space in the storm drain pipes making them less effective in transporting storm water to our ditches and bayous. Small sticks, leaves, newspapers, and other trash become wrapped together and could clog and slow the draining on your street. Our storm drains in Westbury are old. They are original to the neighborhood and should be treated with care. **Only rain in the drain!!!** Our trees are old and have huge roots that are bound to have popped through, combine this with leaves and other debris, and water just can't flow at the rate it should. If the rain is falling very rapidly (as it has many times in the past several years), our water on the streets needs to flow as fast as it can to the bayous.

Here are some things you can do to help.

- ➔ Sweep & BAG your leaves out of the street.
- ➔ Ask your yard crew to NOT blow the leaves and grass clippings down the street or into the storm drains.
- ➔ Clean the storm drain inlet in front of your home
- ➔ Pick up the newspapers that are thrown in your yard. Pick it up, read it or not, and throw it in your recycling.



" AREA RESIDENTS AND NEIGHBORHOOD SPECIALISTS "

JACKIE AND KENDYL TEAM



JACKIE MURRAY (713) 825-9179



KENDYL MAURER-SOMER (281) 904-8199

Over 40 Years of Experience
Selling? **SOLD** when you list with us!

JackieKendylTeam@WayneMurray.net



The Murray Group
(713) 728-2300



We're Local We're Global



11630 Ashcroft
4/2.5/2 • \$430's



10626 Chimney Rock
4/2/2 • \$200's



10710 Mullins
3/2/2 • \$310's



5638 Willowbend
3/2/2 • \$200's



5510 West Bellfort
4/2/2 • \$380's



5734 Bankside
3/2/2 • \$340's

HOUSTON • KATY • SUGAR LAND • THE WOODLANDS

Braeswood Farmer's Market

Are you looking for an alternative to grocery stores? Can't find fresh eggs at the store? Come to the Braeswood Farmer's Market at Chimney Rock and South Braeswood on **Saturdays and Sundays from 9AM-1PM or Wednesday evenings from 4-8PM.** The market is open per County and State laws and has been visited by City inspectors multiple times. There is hand sanitizer and a hand washing station on-site. Support local.

**Wednesday
4PM-8PM**

**Saturday
9AM-1PM**

**Sunday
9AM-1PM**



WHERE IS THE GARDEN?

12581 Dunlap (77035) is off Hillcroft between W. Airport and South Main. Heading south on Hillcroft, turn right onto Greencraig, follow it around the bend where it turns into Dunlap. The large blue roof on the WCG Pavilion is readily visible. Street parking.



Like "Westbury Community Garden Houston" on Facebook

The Backyard Naturalist

Written by Becky Edmondson, Certified Master Naturalist, Galveston Bay Area Chapter

With time on our hands during this stay at home period, many of us have spent more time enjoying the great outdoors in our yards and around the neighborhood. One of the great benefits of living in Westbury is the size of our yards. If an average lot is 8,000 sq. feet with an average 2,000 sq. ft. home, then we have a good amount left for green space. Why not use this time to create a backyard wildlife habitat? It's simple and you can start in stages.

Do you like butterflies? If you like Monarch butterflies, get some seeds and plant plenty of milkweed. This is the only plant that the butterflies will lay their eggs on, as this is the only plant that these caterpillars will eat. And do they eat milkweed! Eric Carle's The Very Hungry Caterpillar might have been inspired by a Monarch!

Do you like birds? Put out a bird feeder and a water source. A circulating water fountain will provide nice fresh water for drinking and bathing.

Do you like hummingbirds? You don't need to hang a feeder, just provide plants with long tubular flowers like trumpet vine, crossvine, firecracker bush, Turks cap, bottlebrush, esparanza, and honeysuckle.

Do you like bees? Do you have a garden that needs pollinators? Plant bee-friendly plants to attract bees. All the nurseries around us should carry bee attracting plants such as duranta, crown of thorns, pentas, bulbine, rosemary, and basil.

Do you want to have a certified backyard wildlife habitat? Go to nwf.org for more information.

Questions or topic suggestions? westburygreen@gmail.com

Links for Lost & Found Pets

- Nextdoor Westbury - www.nextdoor.com
- Westbury Lost and Found Pets Facebook
- Houston Cares - Contact at <https://houstoncaresrescue.org/>



RALPH RIEGER, CPA

We believe in service above Sell!

Giving our clients peace of mind with sound tax planning and financial advice, effectively representing them in dealing with the tax authorities, and timely, tender, loving care in preparing their tax returns. Helping Texas business owners make their dreams come true by helping them create extraordinary businesses.



11415 Chimney Rock riegler@riegercpa.com 713-729-1122

ALL TYPES IRRIGATION, INC.

OVER 30 YEARS EXPERIENCE
*Design • Drainage • Installation • Service
Commercial • Residential*

Emil Becker
T.I.L. #4415
D.L. #126891

Office: (713) 726-1636
Fax: (713) 726-8322
Cell: (713) 819-2872



YES! TO CENSUS 2020

**YES TO OUR CHILDREN.
YES TO STRONG SCHOOLS.
YES TO THE FUTURE.**



Every 10 years the census is used to determine how much funding will be disturbed based on population. These dollars support everything from medical benefits to higher education grants to disaster recovery.

Your responses to the census are important! And they cannot be shared with anyone. In fact, they are even protected by laws from other branches of the government.

Fill out the census online at 2020census.gov.

The census only takes 10 minutes to complete. Don't undercount our community by not participating.

Say YES to the Census 2020!

2020census.gov | 1.800.923.8282



We Know Westbury & Call It Home for 41 Years!

**COLDWELL
BANKER**

UNITED, REALTORS®

Buying, Selling
or Leasing

Tony & Charlseay Porcarello

*** Westbury Specialist + Top Producers ***

713-898-1546

tporcarello@yahoo.com www.porcarello.com



5503 Stillbrooke Dr.
Coming Soon!



6030 Willowbend Blvd.
\$268,000



6030 Willowbend Blvd.
Rental \$1,680



10715 Hillcroft St.
Rental \$1,920