



Westbury Crier

VOLUME 63, ISSUE 3

MARCH 2018



CITY OF HOUSTON CAPITAL IMPROVEMENT PLAN MEETING

District K : March 29

We would like to have a LARGE crowd from Westbury at the District K meeting.

Do you want better drainage? Better streets? Do you want a new library? Do you want a new community center? Do you want improvements made to Hager Park?

This is YOUR opportunity to tell the City what YOU want. For more information, see page 6.

**March 29, 6:30PM, Hiram Clarke
Multi-Service Center
3810 Fuqua Houston, TX 77045**

Heavy Trash is Back!

The City of Houston has finally announced that normal Heavy Trash pickup will resume in March. After 6 months of focusing on flood debris, City crews will start the normal schedule on March 1, just in time for some spring cleaning.



Before you get too excited and haul all that junk you have been storing in your garage to the curb, please know that March is NOT for Junk. It is a TREE WASTE ONLY month. Junk waste pick-up will occur in April. The City alternates pick-up. A good way to remember which month is which is to think that the City EVEN picks up Junk on EVEN months on the year

March Heavy Trash is TREE WASTE ONLY.

Pick-up in Westbury will be on Thursday, March 8.

Do not place TREE WASTE on the curb before Saturday, March 3.



April Heavy Trash is JUNK WASTE.

Pick-up in Westbury will be on Thursday, April 12.

Do not place JUNK WASTE on the curb before Saturday, April 7.

SPECIAL TRASH FEATURE

- ⇒ What is the difference between Junk Waste, Tree Waste, and Yard Waste?
- ⇒ Where are the city's recycling centers?
- ⇒ When is heavy trash pick up?



CHECK OUT PAGES 8 & 9 FOR ALL THE ANSWERS AND MORE!

Spring

White Elephant Sale

**Saturday, April 28
8AM-Noon**

**Westbury United Methodist
Church**

**Sign up for your booth space in
the WCC office starting March 22!**

This is the perfect opportunity to have that garage sale you have been wanting to have at your house but know you can't per long-standing policy of the Westbury Civic Club! Come early for your booth space. Booths sold out last year! **For more info regarding prices and dates, see page 7.**



Constable Program Needs Your Support

Westbury is in danger of losing one of our four deputies. To save the 4th deputy, we need 1,400 residents to pay their 2018 dues by April 1. Read more about the WAP Challenge for 4th Deputy on page 3 & 10.



Primary Election Voting

Election is on March 6.

For more information, see page 6.



RECYCLING DATES

March 2018

Thursday, March 1
Thursday, March 15
Thursday, March 29

April 2018

Thursday, April 12
Thursday, April 26



IMPORTANT CONTACTS

WCC OFFICE *NEW ADDRESS

5322 W. Bellfort #100, Houston, TX 77035

Jennifer Edmondson.....WCC Office Manager

NOTARY SERVICE IS AVAILABLE TO DUES PAYING

WESTBURY RESIDENTS during office hours or by appt.

OFFICE HOURS/CONTACT

Monday- Thursday9AM-1PM

Closed Friday, Saturday, Sunday, and holidays

Telephone.....713-723-5437

Email.....westburycc@sbcglobal.net

Deed Restrictions.....westburycc@sbcglobal.net

Visit our website at www.westburycrier.com

"Like" us on Facebook at Westbury Houston

SECURITY

Pct. 5 Constables (WAP).....281-463-6666

including suspicious activity, burglar alarms and vacation watch

Emergency.....911

Houston Police Dept. Non-Emergency..... 713-884-3131

Westbury HPD Storefront.....832-394-7520

CITY OF HOUSTON

District K Council Member, Larry Green.....832-393-3016

District C Council Member, Ellen Cohen.....832-393-3004

Deed Restriction Enforcement (City Legal).....832-393-6333

Platou Community Center.....713-726-7107

Meyer Library.....832-393-1840

Mayor's Citizen Assistance Office.....832-393-0955

Houston Help & Information.....311

For missed garbage pickup, water line breaks, potholes
sewer repairs, dead animals, traffic signals, heavy trash
violations, neighborhood nuisances, and other city services

CENTERPOINT ENERGY

Electric outage.....713-207-2222

Suspected natural gas leak.....713-659-2111

Street light repairs.....713-207-2222

Make sure to give pole number

OTHER IMPORTANT CONTACTS

County Commissioner Rodney Ellis>>.....713-755-6111

Graffiti.....www.braysoaksm.org

Shopping Cart Removal.....www.braysoaksm.org

Brays Oaks Mgmt. District - Use "report a problem" link

Poison Control.....1-800-764-7661

Harris County Tax office.....713-368-2000

Harris County Appraisal District.....713-957-7800

2018 WCC BOARD OF DIRECTORS

If no contact information is provided, contact the WCC
Office at westburycc@sbcglobal.net or 713-723-5437

EXECUTIVE BOARD

President.....Becky Edmondson

wccpresident@westburycrier.com or 713-443-3951

Vice President.....Cindy Chapman

Secretary.....Dan Vega

Treasurer.....Marcia Hartman

DIRECTORS AT LARGE

Communications.....Katherine Wingfield

Community Relations.....Eugene Sirls

Deed Restrictions.....Jennifer Edmondson

westburycc@sbcglobal.net

Flood Control & Infrastructure.....Donna Strom

Greenspace Beautification.....Mat Funk

Membership.....Jeff Benavides

Security.....J K O'Brien

Volunteer Coordinator.....Robert Ellis-Montgomery

robertsmontgomery@icloud.com

SECTION DIRECTORS

Westbury 1.....Nancy Stewart

Westbury 2.....Susan Brock

Westbury 3.....Tony Robert

Westbury 3.....VACANT

Westbury 4.....Judy Overton

Westbury 4.....Gail Reaben

Westbury 5.....Virginia Livingston

Westbury5E@westburycrier.com

Westbury 5.....VACANT

Westbury South.....Brandon Richard

Parkwest 1.....VACANT

Parkwest 2.....Jeffrey Weiss

Jweiss@txchiro.edu

Parkwest 3.....Lisa Placke

parkwest3@westburycrier.com

NEWSLETTER INFORMATION

Published by.....Westbury Civic Club, Inc.

Editor-In-Chief.....Jennifer Edmondson

Edited by.....WCC Publication Committee

Advertising.....713-723-5437/ westburycc@sbcglobal.net

Ad Disclaimer: The WCC neither represents nor
endorses an advertisement in the newsletter. Perform
your own due diligence before contacting any advertiser.

A Message from the Westbury Civic Club President

March is finally here! Warm days are fast approaching and my dreary brown yard is slowly greening; and those freeze damaged plants I thought were dead, are beginning to bud. My azaleas and roses are blooming and that definitely helps lift the spirits after a cold winter. I hope many of you are seeing the same things in your yards. We have so many beautiful yards in Westbury. For several years the Greenspace Committee hosted a Beautiful Backyards of Westbury tour. There were truly some amazing yards. The famous Azalea Trail will be held in March elsewhere, but let's see what Westbury has to offer. Send your best azalea pictures to westburygreen@gmail.com and we will post on Facebook and pick the best for the April *Crier*.

March is "VegOut!" month at the Westbury Community Garden. Events will be held at the garden on March 10, 17, and 24. Details are on page 23. Bring the whole family or even a scout troop! Can you believe it's been 8 years since we broke ground on the Westbury Community Garden? An intrepid group of Westbury residents had a vision of what a community garden could be. I am so proud that this garden still flourishes today. It is an incredible social space and asset for Westbury and for all of southwest Houston.

The Willow Waterhole is another great social space located in Westbury. You will read on page 20 that they are looking for volunteers who want to become part of the Willow Waterhole Conservancy. This

group advocates for amenities at the greenspace and hosts regular workdays, Scout projects, the Annual Music Fest and more. Be sure and mark your calendar for the weekend of April 21-22 for the Music Fest. The Willow Waterhole is more than just a social gathering space: the number one purpose of the basins is to reduce flooding in the Brays Bayou watershed and the last phase of that project is finally underway. The WCC is still advocating for more to be done to alleviate flooding along the Willow Waterhole Bayou.

The District K CIP (Capital Improvement Plan) meeting will be held on March 29. This is where we ask for those BIG ticket items. I urge all of you to attend and advocate for Westbury. We want our streets and storm sewers replaced, our roads repaired, our park amenities improved, the new library built that has been pending for years, and our community center updated or replaced. Our street and storm sewer work has finally shown up on the city radar, but we still have our original undersized, inadequate and compromised storm sewers from the 1950s. We need to be noisy to insure that these projects are escalated as they are vitally important. Public safety is also a top priority and the WCC works closely with the Houston Police Department. You have an opportunity every month at the monthly PIP meeting to meet the officers who are charged with keeping the Southwest area safe. The new Southwest Station is a wonderful asset and should serve our area well for decades. The number of HPD

officers is down and they are more a reactionary force rather than a preventative force. The days of patrol cars just out cruising and patrolling our neighborhood streets are gone. That is why Westbury has contracted with Precinct 5 for over 30 years to have the deputies patrol our streets.

You will see our 2018 budget is for three deputies. We had increased to four several years ago but have been unable to collect enough dues to cover that additional cost. With over 700 houses flooded during Harvey, there are just fewer people paying. Precinct 5 understood this and said this was happening all over the City. More and more homes in Westbury are becoming rental properties as investors buy up homes. If you are a renter, please ask your landlord to pay the dues. The landlord should care not only about your safety but about their own investment. It only takes 1,100 of Westbury's 5,000 homes to cover the 2018 budget and another 300 to add another deputy.

Here's the challenge: I will be writing the letter on April 1 to Pct. 5 to drop our 4th deputy. However, if in the next 30 days, 1,400 Westbury residents send in their dues of \$335, then I won't have to write that letter to drop one deputy. The dues form is on page 17 or just go online to www.westburycrier.com and take the PayPal option.

Won't you support YOUR neighborhood to make it the safest, greenest and best that it can be?

Becky Edmondson

WCC Board Meeting Notes—February 2018

- WCC welcomed speaker JR Harris, Republican candidate for Justice of the Peace, Pct 5, Place 2
- Treasurer's Report: Due to income deficits in 2017 as well as 2016, the proposed 2018 budget is for 3 deputies instead of 4 deputies. Motion to accept the budget as presented passed.
- Three Super Neighborhood motions passed.
Motion 1: HISD Funding— "Send a letter to the HISD Board in support of all of our local/neighborhood magnet schools."
Motion 2: Hillcroft Expansion— "To support the proposed MTFP amendment to change Hillcroft designation from P6 to P4 from Willowbend to Bissonnet."
Motion 3: Westbury Square— "The Westbury Civic Club does not support the proposed building of the Westbury Villas complex."
- Vacant positions on the WCC board: Section Directors for Westbury 3, Westbury 5, and Parkwest 1.
- Thank you Jackie Murray and Kendyl Maurer from Weichert Realtors for bringing cookies and water



NEXT WCC Board Meeting
Wed., March 21, 7PM
Westbury Baptist, 10425 Hillcroft



MARCH 2018 CALENDAR OF EVENTS

Platou Community Center

11655 Chimney Rock Rd

Houston, TX 77035

Supervisor:

Jayla Godbolt 713.726.7107

Jayla.godbolt@houstontx.gov



Family Fun Day at the Platou Center

March 24, 11AM-1PM

Family Fitness Day. Try the hula hoops and jump ropes. Stretch, play basketball with families. Try table tennis. Parents against kids. Parents against parents.

For more information, contact Jorge at 713-726-7107

MONDAY

Stretching Exercise Class: Improve flexibility in a non-strenuous exercise class.	9:00 AM – 10:00 AM	All Levels
Line Dancing: Fun cardio with a beat.	1:00 PM – 2:00 PM	All Levels
Table Tennis: Open Adult and Teen ping pong.	6:00 PM – 8:00 PM	All Levels

TUESDAY

Quilting: Ms. BeeHaven Quilters Contact: Janie 713.721.5526	10:00 AM -2:00 PM	All Levels
Table Tennis: Open Adult and Teen Ping Pong.	6:00 PM – 8:00 PM	All Ages
TOPS: Take Off Pounds Sensibly. Contact: Dorothy 713.723.4441 or Naomi 713.988.2233	6:00 PM – 8:00 PM	All Levels

WEDNESDAY

Stretching Exercise Class: Improve flexibility in a non-strenuous exercise class.	9:00 AM – 10:00 AM	All Levels
Table Games: Take a chance at Dominoes, Card Games, and More.	10:00 AM - 12:00 PM	All Ages
Table Tennis: Open Adult and Teen Ping Pong	6:00 PM – 8:00 PM	All Levels

FRIDAY

Stretching Exercise Class: Improve flexibility in a non-strenuous exercise class.	9:00 AM – 10:00 AM	All Levels
--	--------------------	------------

Table Tennis at the Platou Center

Table tennis aka ping pong is a great physical activity along with a good way to improve your hand and eye coordination. You will have a great opponent in Nelson Ayala (seen below in yellow) who is well-known in the table tennis community. Call the Platou number, 713-726-7107, and make an appointment with him. Besides being a table tennis aficionado, he is the Assistant Recreational Specialist at the Platou Center and typically on duty from 4 - 8PM.



Meyer Library At Platou Center



Toddler Storytime

Thursdays @ 10:30am – 11:15am

While the Meyer Neighborhood Library is closed for repairs, come enjoy storytime with us at the Platou Community Center! Toddle around with us for stories, songs, and activities that will help develop your toddler's social, motor, and literacy skills. Intended for children ages 18-36 months and their caregivers.

Meyer Library CLOSED

The Meyer library suffered damage from Harvey and is still closed. Look in future *Criers* for more information.

What's Happening in Westbury

Events/Meetings Calendar MARCH 2018

Tues 6	Primary Election See page 6 for more information	
Sat 10	VegOut! At Westbury Community Garden Westbury Community Garden—12581 Dunlap See page 23 for more information	2-3:30PM
March 12-16	HISD Spring Break— WCC Office Closed	
Sat. 17	Audubon Society Bird Survey Gathering Place—S. Willow	7AM
Sat 17	VegOut! At Westbury Community Garden Westbury Community Garden—12581 Dunlap See page 23 for more information	2-3:30PM
Mon 19	Brays Bayou Association Meeting The Gathering Place—5310 S Willow	7:30PM
Tues 20	SW PIP Meeting SW HPD Police Station—13097 Nitida	7PM
Wed 21	WAIC/Super Neighborhood #37 Meeting Westbury Baptist Church— 10425 Hillcroft	8:30AM
Wed 21	WCC Board Meeting Westbury Baptist Church—10425 Hillcroft	7PM
Sat 24	Family Day at Platou Center 11655 Chimney Rock See page 4 for more information	11AM-2PM
Sat 24	VegOut! At Westbury Community Garden Westbury Community Garden—12581 Dunlap See page 23 for more information	2-3:30PM
Thurs 29	District K CIP Meeting Hiriam Clarke Multi Service Center See page 6 for more information	6:30PM

Planning Calendar

- April 1 – Assessments due for Parkwest 1 and Parkwest 2
- April 12 – Junk Waste Heavy Trash
- April 21 & 22 – Music Fest at Willow Waterhole
- April 28 – White Elephant Sale
- May 5 – Westbury HS Gala



TRASH SCHEDULE



Recycling in Westbury

All of Westbury recycles on Schedule A. Recycling is every other week. Recycling goes into the green trash can.

March 2018

Thursday, March 1
Thursday, March 15
Thursday, March 29

April 2018

Thursday, April 12
Thursday, April 26

Heavy Trash Resumes!

All of Westbury is on the same schedule for Heavy Trash. Pick-up is on the 2nd Thursday of every month. Odd months are TREE WASTE ONLY and even months are JUNK WASTE months.

March 2018

TREE WASTE ONLY
Thursday, March 8

April 2018

JUNK WASTE
Thursday, April 12

Important Trash & Recycling Info



- Regular trash pickup is every Thursday. Recycling is every other Thursday. Heavy Trash is once a month, 2nd Thursday.
- Westbury is on Recycle Schedule A
- NO Glass in the green recycling bins
- Trash cans need to be on curb by 7AM each Thursday
- Trash cans must be removed by 10PM each Thursday
- Trash cans must be placed at least 3 feet apart
- Trash cans must be stored out of sight.
- Yard waste MUST be in correct biodegradable bags
- Call 311 for all trash questions and complaints
- Nearby Trash Depositories and Recycling Centers: **SW Trash Depository/Recycling Ctr** 10785 SW Frwy / Hours: Wed.—Sun. 9AM to 6PM; Accepts Junk Waste, Tree Waste & Recyclables.
- Environmental Service Center** - 11500 S. Post Oak Hours: Tues/Wed 9AM-3PM; 2nd Sat 9AM-1PM. Accepts Hazardous Household & Electronic Waste.
- GLASS: May be recycled at Westbury United Methodist, 5200 Willowbend, in the orange container near W. Bellfort.
- Refer to www.westburycrier.com or www.houstontx.gov for more trash and recycling information

PRIMARY ELECTIONS—MARCH 6

Do you ever step into the voting booth in November, look at the ballot and wonder how “person X” can possibly be a candidate? “Person X” was voted to be the party candidate during the spring Primary Elections for the Republican and Democratic parties. If you hope for a better roster of candidates, you need to take the time now to research the candidates and to vote during the spring Democratic and Republican Primary Elections. If you want to vote on Election Day on March 6, you must vote at your designated location for your specific precinct. Texas has open primaries, which means that you can vote in either the Democratic or the Republican primary; however, if there is a run-off election then you cannot cross over to the other party during the primary elections.

Westbury is known for its high voting rates. Please do your part to maintain our democratic republic. Your input is needed in these primary elections. Please vote.

Go to www.harrisvotes.com
for sample ballots,
candidate info, and more.



Voting Locations for Westbury Area Precincts*

Polling Locations are subject to change

Precinct	Republican Primary	Democrat Primary
14	Westbury United Methodist	Westbury United Methodist
22	Anderson Elementary	Foerster Elementary
146	Platou Community Center	Platou Community Center
281	Godwin Park	Godwin Park
291	Anderson Elementary	Herod Elementary
293	Anderson Elementary	Westbury United Methodist
403	Westbury Baptist	Westbury Baptist
453	Platou Center	Foerster Elementary
693	Milne Elementary (7800 Portal)	Braeswood Assembly of God (10611 Fondren)

District K Capital Improvement Plan Community Meeting

Thursday, March 29, 6:30 – 8 PM
Hiram Clarke Multi-Service Center
3810 Fuqua, 77045

The City of Houston’s Capital Improvement Plan (CIP) is a 5-year plan that list projects the City of Houston intends to construct. City representatives from the Public Works Dept., General Services Dept., and Parks & Recreation Dept. will attend the CIP meeting. The Mayor is scheduled to attend. An update will be given of the ReBuild Houston initiative within District K.

These CIP meetings provide citizens the opportunity to participate in the budget process by contributing comments and suggestions about CIP-related needed services and improvements. In the past, Westbury has been very successful at lobbying the City at these meetings for much needed improvements to our streets, drainage, and parks.

Westbury residents are encouraged to attend this public meeting. If possible, please wear a shirt to the meeting that references the Westbury area.

To view the City’s Capital Improvement Plan for Fiscal Years 2017-2019, visit www.houstontx.gov/cip. The City will provide reasonable accommodations to citizens with disabilities and special needs by request in advance of the meeting date. To request accommodations, call the Department of Neighborhoods at 832-393-0955.



HIT BY HARVEY?

WE’RE HERE TO HELP.

WE’RE YOUR NEIGHBOR AND A NEIGHBORHOOD EXPERT.

We’ve had our rubber boots on the ground and hammers in hand. Recovery continues and so does our support.

DON’T PAY FULL COMMISSION.

Save up to 4.5% in commission. Call now to find out how!

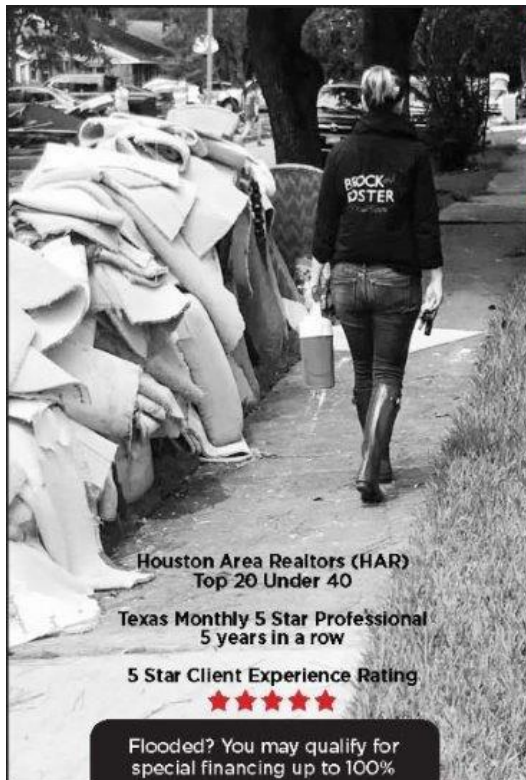
IN SEARCH OF LEASING OPTIONS?

Long-term or short-term, leasing has always been one of our specialties.

BROCK and FOSTER
Real Estate

www.BrockandFoster.com 713.922.0877

Westbury Willowbend Willow Meadows Meyerland



Houston Area Realtors (HAR)
Top 20 Under 40

Texas Monthly 5 Star Professional
5 years in a row

5 Star Client Experience Rating
★★★★★

Flooded? You may qualify for
special financing up to 100%

White Elephant Garage Sale on April 28

Do you need to have a garage sale, yard sale or estate sale?

The Westbury Civic Club (WCC) provides fall and spring community garage sale events for our members. The Spring White Elephant Sale will be on Saturday, April 28, from 8AM to Noon at Westbury United Methodist Church. The rain date is May 5.

Booth space will go on sale at 9AM on Thursday, March 22, for individual Westbury residents ONLY *

The WCC office will be open at 9AM on March 22 and close at 2PM. **The office will also be open from 5-6PM on Thursday, March 22 for booth space purchase.** Booths may be purchased during normal office hours of 9AM to 1PM starting on March 26.

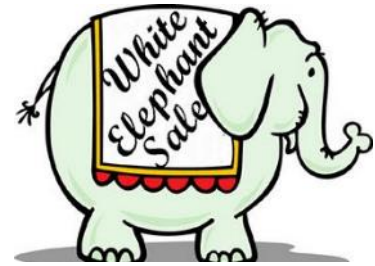
You must be a paid current member of the Westbury Civic Club to purchase a booth. This means you must have paid your 2018

**Due to limited space and increased interest by homeowners, only individual homeowners may purchase booth space in March. Non-residents and ALL non-profit organizations and groups (including Westbury resident run) must wait until April 4. Violators of this policy may not be allowed to participate in the current and/or future White Elephant Sales. All non-profit organizations and groups must register under their organization name. No individual may purchase a booth for a group or organization unless doing so under that organization's name.*

WCC membership dues of \$50. If you have not paid your 2018 dues, you may do so at the same time that you purchase your booth space. The booth price for individual Westbury residents will be \$20-\$25. Booths will go on sale to non-residents and groups/non-profit organizations on April 4, if space permits, on a first come, first serve basis. The booth price for non-residents is \$70-75.

The Westbury White Elephant Sale allows residents the opportunity to sell unwanted household items at a highly visible central location with security provided. **The WCC provides location, security, bathrooms, and publicity for the sale. The Civic Club does NOT provide tables, chairs or shade.**

Garage, estate, yard, moving sales, etc. are not permitted at Westbury residences by long standing policy of the Westbury



**1st Day of Booth Sales for Westbury Residents ONLY
March 22 from
9AM—2PM AND 5-6PM**

Civic Club and the deed restrictions. So why not have fun, make money, be safe, and be a good neighbor.

Plan on having a booth at the Westbury White Elephant Sale!

SAVE THE DATE

<p>Water Heaters: Regular & Tankless</p> <p>Disposals</p> <p>Water Lines</p> <p>Gas Lines</p> <p>Drain Cleaning</p> <p>Under Slab Repairs</p> <p>Re-route kitchen & laundry pipes</p>	<h2>ASTRO PLUMBING</h2> <p>Full Service Plumbing and Repair Specialist</p> <h3>713-256-0017</h3> <p>★ JOHNNY LEWIS ★</p> <p>WESTBURY RESIDENT</p>	<p>New Sewer Lines</p> <p>Hydrostatic Testing</p> <p>Remodeling & Repairs</p> <p>Sinks</p> <p>Faucets</p> <p>New Drains under Bathroom</p>	
M16312 ★ Since 1985	★ Senior Discounts	★ All Major Credit Cards	★ Fully Insured

Dick n' Sons
Floor Covering Center

6240 Bissonnet, Houston, Texas 77081

713.981.1900
www.dicknsons.com

Serving Westbury over 40 Years!



Fine Floor Coverings
for Every Budget

**Carpet, Cork, Laminate, Vinyl, Hardwood,
Ceramic Tile & Countertops!**

M-F 8-5 Thurs. 8-7 Sat. 10-4
6 Months No Interest Financing

All About Trash

Special Edition

HEAVY TRASH Explained!

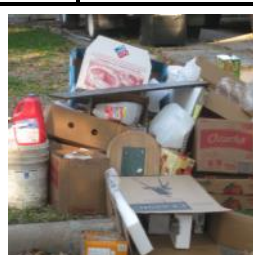
The City of Houston provides residents with FREE curbside monthly heavy trash collection, alternating "TREE WASTE" collection months with "JUNK WASTE" collection months. The collection cycle is the same every year, as shown below. **ALL of Westbury is picked up on the 2nd Thursday of each month.**

Heavy Trash can be placed on the curb starting the Saturday before the scheduled collection date. Do not place heavy trash on the curb early. Not only is it a violation of city ordinance, but it is ugly and no one wants to look at a neighbor's trash for weeks on end.

TREE WASTE	JUNK WASTE
January	February
March	April
May	June
July	August
September	October
November	December

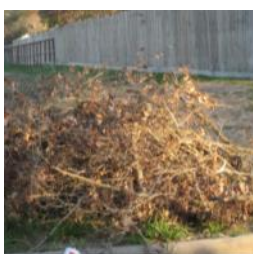
What is "Junk Waste"?

"Junk Waste" includes furniture, appliances, lumber, fencing, and other bulky items (including tree waste, but the tree waste would then be sent to landfill rather than mulched). **The city will NOT collect bagged yard waste placed in improper bags during a Junk Waste month.**



What is "Tree Waste"?

"Tree Waste" consists of tree limbs, shrubby limbs, or branches of trees and shrubs. If the Tree Waste has other types of materials mixed in with it, then it is no longer Tree Waste. Lumber, fencing and similar materials are NOT considered Tree Waste. During a Tree Waste month, only Tree Waste materials will be collected.



What is "Yard Waste"?

"Yard Waste" consists of leaves, grass clippings, small yard trimmings or branches. **Yard Waste must be in a city-approved bag**, or small branches bundled (tied) into a pile less than 4 feet long, less than 18 inches in diameter, and less than 50 pounds in weight. "Yard Waste" is picked up every Thursday.



Westbury Trash Dates

Every Thursday regular trash is collected in the black rolling can.

Every Thursday yard waste is collected if bagged correctly (see below).

Every other Thursday recycling is collected in the green rolling can.

2nd Thursday of every month is Heavy Trash. Odd month are TREE WASTE ONLY and even months are JUNK WASTE.

Trash Can Placement

Household garbage must be put inside the city-provided container which should be placed at the curb between 6PM Wednesday evening and 7AM Thursday morning. The container must be accessible to the automated collection truck and not blocked by obstacles, including parked cars. Homeowners with multiple trashcans **MUST** place trashcans three (3) feet apart. Do not place cans next to light poles or trees. The city has started tagging cans that are placed incorrectly. Homes on corners must place their trash cans on the front street (not side). Trash cans must be removed from the curb by 10PM Thursday.

TRASH CAN PLACEMENT EXAMPLES



Too much trash this week? Buy "tags for bags" from Fiesta, HEB and participating Kroger stores to get your extra bags of trash picked up. Cost is \$ 2 per tag, plus tax.

What goes in the large green bin? Recyclables such as steel or aluminum cans. Paper. Certain plastics, but not # 6. Glass IS NOT allowed in the large recyclable bins. Recycling is picked up every other Thursday.

Where can I recycle glass? Glass can be recycled at Westbury United Methodist off W. Bellfort in the glass recycling bin provided by the City.

What goes in the large black trash bins? Household garbage such as personal trash and food waste are to be placed in the large black trash bins. Household garbage day is Thursday. No yard waste, dead animals, household hazardous waste, or electronics are allowed.

Trash Reminder App

The City of Houston Solid Waste Department has a free app for smartphone users, Rollout! It is available for Androids and iPhones. Enter your address, set reminders and never forget when trash day is! The app will send notifications to your phone to remind you when to recycle trash, regular trash and even heavy trash.





SHAC
SWIM HOUSTON
AQUATICS CENTER

- Year Round Swim Lessons
- Indoor Heated Pool
- Water Aerobics
- Year Round Competitive Swim Team
- US Masters Swim Program
- Women's Only Swim Sessions

8454 West Airport
Houston, TX 77071
713 - 785 -7422
www.shaclessons.com
www.shacswim.com

Environmental Service Center – South

11500 South Post Oak - between Gasmer and South Main

Recycle and Household Hazardous Waste

Various household hazardous waste is accepted such as anti-freeze, fuel, oil, paint, paint thinner, pesticides, herbicides and household cleaners. Residential electronic scrap items will also be accepted (monitors, televisions, printers, keyboards, mice, scanners, fax machines, telephone handsets, VCRs, CPUs, cellular phones and other small consumer electronics). These items should not be placed on the curb with or in your container for collection with garbage or heavy trash pick-up. **The center is open every Tues. and Wed. from 9AM to 3PM and the 2nd Saturday of the month from 9 AM- 1 PM.**



Items that can be taken to the Environmental Service Center

Reuse Chemical Take Away (FREE)

The City of Houston's Environmental Service Center South offers free paint and household chemicals. Located at **11500 South Post Oak Road**, the Center is open for reuse chemical distribution on **Fridays from 9AM to Noon**. First come, first served.

ReStore (Craft Items, Books, Post Consumer & Industrial Scrap - FREE)

The ReStore, which acts as a book swap, recycling info library, as well as a repository for craft items and post-consumer and post-industrial scrap (useful for art projects). Located at **11500 South Post Oak**, items can be taken away from **9AM - Noon every Friday** during the Reuse Chemical Take-Away.

* Harvey Trash Update *

If you have paid contractors working on your residential home and/or businesses, the contractor is solely responsible for disposing of the resulting debris, NOT the City of Houston Solid Waste Dept.

Also, if you witness contractors dumping their debris onto vacant lots and/or unoccupied residential property, please contact the Southwest HPD Substation at 832-394-0400 and report this incident.

Help Keep Westbury Beautiful by following all City trash ordinances!

All About Trash

Special Edition

Southwest Neighborhood Depository & Recycling Center (for Heavy Trash Drop-off)

10785 Southwest Freeway Houston, TX 77074
Phone: 713.541.1953

This facility accepts Junk Waste, Tree Waste and Recyclables at no additional charge to City of Houston residents. Citizens may use the depositories four times per month. You must provide a Texas Driver's License or ID and a current utility bill or city property tax receipt. **The depositories will also accept the following items:** Furniture, Tree limbs, Stoves, Refrigerators, 10 auto tires (Rims Not Accepted)

Open Wednesday - Sunday, 9AM to 6PM.

Westpark Recycling Center

5900 Westpark

This facility is a drive through operation, so you do not have to unload your vehicle.

The center accepts: aluminum and tin cans, oil filters, used tires, computers, #1-7 plastic containers, GLASS bottles and jars, telephone books, office paper, cardboard, magazines, and used motor oil. Newspapers placed in a brown bag will also be accepted.

Open Monday– Saturday from 8AM to 5PM.

Reuse Warehouse

9003 N. Main St.

The facility accepts material from individuals, supply companies, and builders, and makes it freely available for reuse by any non-profit organization.

Open Tuesday thru Friday from 8:30AM to 4:30PM and every 2nd and 4th Saturday of the month from 8:30AM to 4:30PM

Trash Violations

Violation of any provision of the solid waste ordinance is punishable upon first conviction by a fine of no less than \$50 nor more than \$2,000. Each subsequent conviction is punishable by a fine of no less than \$250 nor more than \$2,000. Each day that any violation continues may be punishable as a separate offense. **To report a violation or to file a complaint, call 311.** Solid Waste Management Department Supervisors can write citations.



Plumbco
Plumbing
www.plumbcohouston.com
MPL#12248
your neighborhood plumber

713-721-PLUM
For all your
Plumbing (7586)
Installations and Repairs

WCC GENERAL OPERATIONS & PROGRAMS 2018

General Income

Mandatory/Assessments	100,000
Voluntary Dues	54,500
Donations Civic Club	3,500
Additional WAP Donations (restricted)	10,000
Westbury Area Patrol Voluntary (Restricted)	160,000
Refinancing Fees	3,000
Transfer Fees	35,000
Resale Certificates	1,000
Interest Income	1,500
Total General Income	368,500

Program Expenses

Crier Printing & Expenses	45,000.00
Crier Advertising Fees	-50,000.00
Community Garage Sale Expense	2,000.00
Community Garage Sale income	-2,000.00
Programs & Hospitality	500.00
Membership Expenses	8,340.00
Greenspace Monthly Maintenance Contract	15,000.00
Water, Plants, Supplies & Equipment	10,000.00
Harris County Constable Fees (all 4 deputies)	327,660.00
~minus one deputy (see box to the right)	-81,000.00
Total Program Expenses	275,500.00

General Expenses

Books, Subscriptions, Dues	250
Postage, Mailing Service	500
Printing & Copying	500
Supplies	2,500
Training & Education	500
Contributions to Ext Orgs	500
Bank & Pay Pal Fees	3,800
Computer Expense	3,000
Insurance	7,200
Payroll Expenses	50,000
Contract Services - Accounting/Legal	7,000
Facilities and Equipment	17,000
Conferences & Meetings	250
Total General Expenses	93,000
Total: Program + General Expenses	368,500

WCC 2018 Budget

The Westbury Civic Club (WCC) Budget Committee presented the 2018 Budget. This year's proposed budget will be similar to last year's budget, but with one **POTENTIAL** large change related to public safety (constable patrol program). The WCC operates on a calendar year budget. We estimate our income for the coming year (based on prior history), and then we budget proposed expenditures based on the projected income. This year our projected income and expense is \$368,500.*

Our biggest expense is the Westbury Area Patrol (WAP) security control contract with the Precinct 5 constable office. The WAP Patrol has consisted of three deputies for years. In 2014, Pct 5 asked us to increase to 4 deputies. Historically we have not collected sufficient funds to cover the cost of a 4th deputy, which is why we had 3 deputies for years. The civic club has had to dip into our security patrol reserves to pay the added costs of that 4th deputy. The WAP Patrol contract cost will increase 3% in 2018. Due to this increase and the challenge associated with collecting the \$327,660 to cover 4 deputies, we will be returning to our 3 deputy system which reduces this by \$81,000. This still gives us coverage in the morning, afternoon and night shift. We are going to ramp up our collection process with multiple mailings this year and see if more residents pay for this service. Harvey flooded more than 700 homes in Westbury and this affected income in 2017 and might in 2018 as well.

Here is a challenge to save our 4th Deputy!!!

The WCC will write a letter on April 1 to Pct 5 to drop our 4th deputy. However, if in the next 30 days, 1,400 Westbury residents send in their dues of \$335, then we won't have to write that letter to drop our 4th deputy!!! We must know that we will be able to pay our contractual obligation to Pct 5 or we will drop that 4th deputy. The dues form is on page 17 or pay online via paypal.

Won't you support YOUR neighborhood to make it the safest, greenest and best that it can be?

If you are a renter in Westbury, will you please ask your landlord to pay the dues? Or ask him if you can just deduct the dues from next month's rent and pay them yourself. Surely he wants to keep you safe and protect his investment.

* The \$368,500 income and expenses are projected as follows:

Westbury Area Patrol— \$246,660 3 deputies
Greenspace— \$25,000 This is taking care of the areas the WCC has adopted and other areas that are not mowed frequently.

WCC Operating Expenses —\$96,840 The General Expense category includes all of the items that go into operating the Civic Club printing and distribution of the *Crier*, operating an office and staffing it, insurance, professional fees (financial reviews, legal expenses), doing projects and programs, and deed restriction enforcement. Advertising in the monthly news-letter offsets its printing costs.

WAIC Meeting Notes

The Westbury Area Improvement Corporation (WAIC) meets every 3rd Wednesday at 8:30AM at Westbury Baptist Church. The WAIC along with the Westbury Civic Club make up the Westbury Super-Neighborhood. The next WAIC meeting is Wed., March 24.

The Friends of Chimney Rock Park has recently become a nonprofit 501c3 organization. The WAIC board approved a motion for the Friends of Chimney Rock Park to join the WAIC board with Hazel Potvin as the primary and Diane Lovelady to be the alternate. Additionally, the WAIC had been holding funds on behalf of the "Friends" donated by Cheniere Energy for a project by students at Westbury High School at Chimney Rock Park. The WAIC board approved transferring these funds to the "Friends" and also to include a small donation so that the total sum transferred will be \$4500, with the intent that these funds will be used to install benches which had been purchased for the park.

Bruce Krewinghaus, President of SWH2000, discussed that several community organizations are working together to change the classification of Hillcroft between Willowbend to Bissonnet from 6 lanes (P6) to 4 lanes (P4) in the regional planning Major Thoroughfare and Freeway Plan (MTFP). The WAIC board voted to provide a letter of support from the WAIC and the Westbury Super Neighborhood. The segment of Hillcroft between South Main and Willowbend was changed to P4 in 2017 with the help of CM Larry Green. Hillcroft is already currently 4 lanes from South Main to Bissonnet.

The WAIC authorized a committee to develop a response to proposed changes about Flood Plain management in Chapter 19 of the city ordinances, due by March 5 to the city. Also, a committee was authorized to develop CIP (capital improvement) requests to submit to the city. After discussion, the board authorized sending a letter to the board of HISD to express support for the magnet programs at our local schools. Concerns were discussed regarding proposed HISD budget changes which will affect all schools in HISD.

Public Safety: HPD Officer Freeze summarized recent inspection results. During March, HPD will inspect all convenience stores to see if they are following city ordinances (silent alarms, videos, etc). Crime at conveniences stores has declined dramatically.

New Furniture for the WCC Office

Westbury resident and fellow tenant at the Westbury Professional Building on West Belfort, Susan Mellott, donated a beautiful conference table and desk to the Westbury Civic Club. How did we get it downstairs to the WCC office? We called upon the WCC board and the Westbury High School baseball team! Many thanks to Coach Lyle and his baseball players for coming over after their victory to help move the table and desk downstairs. Many thanks to WCC board members Brandon Richard and Mat Funk for volunteering to oversee and set up the new furniture. We will be able to host meetings in style now.



New Cell Tower to be Built

You may have noticed a sign on Chimney Rock announcing a new 100 foot cell tower. This will be a commercial cell tower sited on private land next to and behind the City Fire Station on Chimney Rock. When a cell tower is proposed, the Planning Department looks at the land use of the properties within a 375 foot radius of the tower pole. Planning calculates how many plats are residential. If the residential use is more than 50% within that 375 foot radius, then the tower application must have a public hearing. For the new Chimney Rock tower, the residential use is about 49%; therefore, a public hearing will not be scheduled.



" AREA RESIDENTS AND NEIGHBORHOOD SPECIALISTS "

JACKIE AND KENDYL TEAM



JACKIE MURRAY
(713) 825-9179



KENDYL MAURER
(281) 904-8199



5155 Kingfisher
3/2/2 • \$290's



11414 Braewick
4/2/2 • \$190's



11722 Braewick
3/2/2 • \$290's



5335 W. Bellfort
3/2/2 • \$230's



6007 Warm Springs
4/2/2 • \$290's



6035 McKnight
3/2/2 • \$170's

Over 40 Years of Experience
Selling? **SOLD** when you list with us!

JackieKendylTeam@WayneMurray.net

Weichert
REALTORS

The Murray Group

(713) 728-2300

Leading REAL ESTATE COMPANIES OF THE WORLD™

We're Local We're Global

HOUSTON • KATY • SUGAR LAND • THE WOODLANDS



Wondering what your
property is worth in
today's market?

Call

The Mercer Team

now for a

FREE MARKET ANALYSIS!

713-826-7274

Why have one Realtor when
you can have a whole team!



RE/MAX Metro

2626 Richmond Ave

Houston, TX 77098

LARRY MERCER

EMAIL: TheMercerTeam@yahoo.com

www.larrymercerteam.com

Westbury HS Gala: May 5

Ever wondered how you can get involved with the Friends of Westbury High School Foundation's Annual Gala and Silent Auction? Do you want to help make our scholarship recipients have the best night possible? Are you interested in helping even more students receive much needed scholarships in the future? The Friends of WHS have donated over \$400K in scholarships. If you have items or funds to donate, please contact the Friends of WHS thru www.friendswhs.org.



Save the Date! This year, the Friends of Westbury High School Foundation's gala is Saturday, May 5.

Westbury Area School Updates

Anderson Elementary reported a loss of 200 students due to Harvey flooding, but gained 200 new students.

Parker Elementary plans a new SPARK Park, which will feature metal artwork. Parker will move into its new building over Spring Break in March.

Kolter Elementary The City of Bellaire will be reviewing the temporarily relocated "Kolter North" Elementary occupancy in March.

Fondren Middle School has the only middle school International Baccalaureate (IB) program in HISD and has moved from being in Improvement Required status to receiving 5 Stars of Distinction and attracting 200 non-zoned students to FMS.

Westbury High School will move into its new wing on March 2.

Westbury High School Hosts BridgeYear Career Fair for Graduating Seniors

On Friday, February 9th, Westbury seniors got a chance to try a different kind of career fair. BridgeYear, a local non-profit organization, set up hands-on stations in the school gym and gave students the opportunity to choose from seven highly demanding careers to "test drive." These jobs (pharmacy technician, medical coding, laboratory technician, process technician, console operator, maritime logistics and electrician) all require two years or less of schooling. At the end of their training period, graduates can step right into jobs in Houston's burgeoning economy.



After attending this event, students had a much better understanding of the type of work these jobs entail and left with a new enthusiasm about possible career options. This event was part of Westbury's college readiness initiative, designed to assist all Westbury students with finding the right career path.



ALL TYPES IRRIGATION, INC.

OVER 30 YEARS EXPERIENCE
Design • Drainage • Installation • Service
Commercial • Residential

Emil Becker
T.I.L. #4415
D.L. #126891

Office: (713) 726-1636
Fax: (713) 726-8322
Cell: (713) 819-2872

In-home repairs
Lessons

Stitcher Fxer
832.341.8507

foundationrepairplumbing.com
713-695-4050
FREE ESTIMATES

CALL TODAY!!!

- Under-Slab Plumbing
- Tunnels
- Sewer Re-routes
- Hydrostatic Testing
- Foundation Repair

TRUST • INTEGRITY • HONESTY

OVER
40
YEARS
EXPERIENCE

PLUMBING FOUNDATION REPAIR UNDER-SLAB SEWER WATER PIPING

PL-15997

30 Day Crime Statistics for Westbury SuperNeighborhood

February 1– February 26, 2018

Crime in Westbury Single Family Homes

Block	Street	Crime	Date	Time	Section of W
12400	Ashcroft	Burglary of Habitation	2/14	11AM	Westbury South
6000	Benning	Auto Theft (Truck or van)	2/22	3AM	Westbury 5
10800	Burdine	Burglary of Habitation	2/20	4PM	Westbury 2
5800	Creekbend	Burglary from a motor vehicle	2/16	2AM	Parkwest 2
5900	Dellfern	Burglary of Habitation	2/21	9AM	Westbury 4
6000	Duxbury	Burglary of Habitation	2/25	8AM	Westbury 4
6000	Duxbury	Burglary of Habitation	2/20	11PM	Westbury 4
6000	Dryad	Burglary of Habitation	2/2	9AM	Westbury 4
5700	Farwell	Burglary from a Motor Vehicle	2/17	12AM	Westbury South
5700	Firenza	Rape	2/13	1PM	Westbury South
6000	Fontenelle	Burglary from a Motor Vehicle	2/14	9PM	Westbury 4
5700	Greencraig	Robbery	2/24	12AM	Westbury South
5800	Greencraig	Aggravated robbery with gun	2/2	9PM	Westbury South
10700	Kirkside	Theft- Misc	2/23	9AM	Westbury 5
11600	Landsdowne	Auto Theft (Car)	2/18	4AM	Westbury 3
5900	Lattimer	Burglary of Habitation	2/18	3PM	Parkwest 3
5800	Ludington	Burglary of Habitation	2/21	9AM	Westbury 4
5800	Portal	Burglary from a Motor Vehilce	2/16	6AM	Parkwest 2
6000	Warm Springs	Theft of Construction Materials	2/3	10AM	Parkwest 3
5600	Willowbend	Burglary from Motor Vehilce	2/5	11AM	Parkwest 1
6000	W. Airport	Burglary of A Motor Vehicle	2/4	9AM	Westbury 4

KEY

-  Burglary from Motor Vehicle
-  Auto Theft
-  Theft
-  Burglary
-  Robbery
-  Aggravated robbery with gun

The Westbury Civic Club strives to provide accurate information. Due to the printing date of the *Crier*, crime statistics are always delayed. For crime alerts, follow Westbury Houston on Facebook or sign up for email alerts at www.westburycrier.com.

The crimes listed below took place between February 1 – February 26. They are in alphabetical order by street. The crimes are highlighted by type. Please see key above.

Crime in Commercial, Public Spaces, and Apartments

Block	Street	Crime	Date	Time	Where
5200	Arboles	Burglary of Habitation	2/11	4AM	Townhomes
10600	Braewick	Burglary from a Motor Vehicle	2/13	11AM	Street (Comm)
10600	Braewick	Burglary from a Motor Vehicle	2/15	5PM	Street (Comm)
11300	Chimney Rock	Burglary from Building	2/2	1AM	Commercial
12400	Chimney Rock	Burglary from a Motor Vehicle	2/13	12PM	Commercial
12500	Dunlap	Aggravated Robbery with weapon	2/15	7PM	Apartments
12500	Dunlap	Aggravated Robbery with weapon	2/7	1PM	Apartments
12500	Dunlap	Aggravated Robbery with weapon	2/11	3PM	Apartments
12500	Dunlap	Aggravated Robbery with weapon	2/11	6PM	Apartments
12500	Dunlap	Theft - US Mail	2/21	5PM	Apartments
12500	Dunlap	Theft - Misc.	2/16	3PM	Apartments
12600	Dunlap X2	Aggravated Robbery with weapon	VARI	OUS	Apartments
12600	Dunlap X2	Theft - Misc.	VARI	OUS	Apartments
5500	Gasmer	Robbery - Home Invasion	2/15	9PM	Apartments
5500	Gasmer X2	Aggravated robbery with weapon	VARI	OUS	Apartments
12600	Hillcroft	Aggravated robbery with weapon	2/25	5AM	Apartments
12600	Hillcroft	Burglary from a motor vehicle	2/10	10PM	Apartments
12300	Hillcroft	Theft from a building	2/17	9PM	Commercial
11300	Ricecrest	Burglary from a motor vehicle	2/21	8AM	Willow WH
10500	S. Post Oak	Burglary of a building	2/16	9AM	Commercial
10700	S. Post Oak	Aggravated robbery with weapon	2/1	8AM	Apartments
10700	S. Post Oak	Burglary from a Motor Vehicle	2/2	10AM	Apartments
10800	S. Post Oak	Auto Theft	2/13	10AM	Apartments
11000	S. Post Oak	Aggravated robbery with weapon	2/15	9PM	Commercial
11200	S. Post Oak	Aggravated Robbery with weapon	2/4	5AM	Apartments
5800	W. Airport	Rape	2/3	9PM	Commercial
5800	W. Airport	Aggravated robbery with weapon	2/7	11AM	Commercial

Westbury Area Patrol
281-463-6666
Westbury HPD Storefront
832-394-7520
HPD Non-Emergency
713-884-3131



Houston Police Dept.

Several members of the Westbury Civic Club attended the February monthly “PIP” (Positive Interaction Program) meeting at the new Southwest Houston Police Department building at 13097 Nikita (see map). The HPD Southwest Substation has combined its two PIP meetings into a single monthly meeting, which will be held on the 3rd Tuesday at 7PM at the community room at the new substation.

HPD Captain Null noted that one of her goals is good communications. The new, larger SW HPD building is now able to host police units which did not previously have a full-time presence in the SW district. The new building now hosts Gang, Major Crimes, and Narcotics units in addition to the Patrol, Tactical, and DRT officers.

Captain Null reported that Mondays and Fridays are the busiest days for crime. Car break-ins have been a problem, with guns being highly desirable objects to steal. Did you know that 25% of car break-ins result in a gun being stolen. She recommended that people do not leave guns in cars. People have been followed after leaving a shooting range with their guns, and then the guns have been stolen from the parked vehicle while the owners run a few errands on the way home. Events at the NRG stadium complex can add more than 60,000 people to our HPD district in a single day.

How many people work at the Southwest HPD station? Captain Null said that there are 150 officers at the SW station which includes Patrol, Tactical, and DRT officers. These officers are split between 3 shifts. She was worked with HPD for 20 years and there are now fewer HPD officers than when she started working for HPD.

Do HPD officers patrol? Due to the shortage of HPD officers, they primarily respond to calls for service instead of patrolling. Captain Null looks at the crime data every day to determine if manpower needs to be allocated to specific areas.



Sgt. Ortiz presented information about the NextDoor app. There are 23,000 members of NextDoor who receive crime messages and announcements from the Southwest HPD station. The Southwest division is now posting on Next Door so watch for their posts if you are on this social media platform.

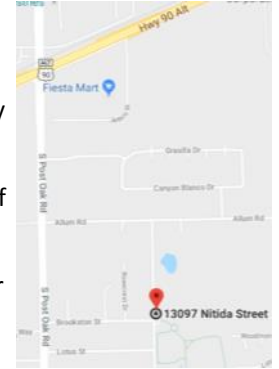
ENCAMPMENTS

Sgt. Ortiz gave an update about homeless encampments. City Council passed an ordinance about encampments (Section 21-62) which prohibit encampments with open flames, tents or other structures, and a lot of belongings. The ACLU obtained a temporary restraining order in May 2017. The restraining order was lifted in December of 2017; however, the city is holding off from enforcement of homeless encampments until the city has built a “low barrier shelter” (an outdoor shelter with few rules to follow) for the homeless who prefer outdoor living. In the interim, HPD works with the Solid Waste Department to clean up unsanitary conditions and trash at encampments and tries to connect the homeless with resources via the Homeless Outreach Team.

SLIDING AND JUGGING

Officer Zamora gave a presentation about criminal activities called “Sliding” and “Jugging”. Sliding happens at gas stations grocery stores, shopping centers, and

other locations where a vehicle is burglarized of valuables, typically when the driver is nearby. A criminal will be dropped off near the targeted vehicle and will “slide” (creep over in a stealthy manner) to steal a purse or other valuables from the car while the owner is pumping gas or putting bags in the trunk. He advised to be alert when you come out and don’t be on your phone. Keys in hand. Shop in a group. “Jugging” means that a victim is observed leaving a bank or check-cashing business with a money bag and then is followed so that the money is stolen from the vehicle when the owner parks the vehicle when doing errands.



HPD advice: There were 53 sliding thefts in the Southwest division last year and 9 jugging incidents. Be alert when you come out to your car and don’t be on your phone. Have your keys in hand. Don’t shop alone. Keep your valuables and guns on your person and not in your car. Never drive home if you think you are being followed. Your safety is the most important thing. Items can be replaced, your life cannot.



Don’t forget Vacation Watch!

For residents who pay the WAP patrol dues, a special Vacation Watch may be requested from Pct. 5. The form is available online. Sign up at www.constablepct5.com/vacation-watch/ If you want to request a Vacation Watch, but do not have access to a computer or internet, please call 281-463-6666 for assistance.



Locally Owned & Operated
30 + Years of Experience
Honest & Reliable
FREE Estimate
excludes insurance estimates



\$500 COUPON OFF A \$5000 ORDER



Bathroom REMODELING
Kitchen REMODELING
CALL 281-850-0795
for Quotes & Estimates

SERVICES INCLUDE

Painting • Staining • Refinishing • Repairs
Drywall • All Build Types • Interior & Exterior
Additions • Cabinets • Counters • Moldings
Flooring • Doors • Masonry Painting • Siding
Patios • Decks • Fences

Westbury Area News

Maplewood Marlins Swim Team

Are you looking for a fun activity for the kids this summer? The Maplewood recreational swim team summer season is just around the corner. The team's returning head coach is the amazing Stephanie Yard. The Marlins swim out of the Maplewood S/N pool located just north of Westbury at 10425 Rampart. You do not have to be a Maplewood resident to be on the swim team.

Registration starts March 1 for returning swimmers and March 15th for ALL new swimmers. Swimmer eligibility, practice times and other information is available online at www.maplewoodmarlins.swimtopia.com.

The Maplewood Marlins are members of the Southwest Houston Recreational Swim League. The team consists of 200 children on the meet and practice teams.

The Southwest Houston Recreational Swim League is a summer swim league composed of community and subdivision swim teams in the Southwest Houston Area including Alief, Sugar Land, Missouri City, Meadows, Mission Bend, Stafford, Houston and Richmond. The SHRSL was organized to consolidate local swim teams, to standardize swim team rules and to foster competition through the divisions of teams of equal size and strength.

For swimmers age 4-18 years, a strong emphasis is placed on strengthening swimming skills, sportsmanship, water safety, and promoting fun through a competitive summer swimming programs.



Remodeling your home? Adding On? Do you know your deed restrictions? Did you know that the Westbury Civic Club can look over your proposed plans for free before you start construction? We want to avoid deed restriction violations before they happen. Did you know that Westbury 2, Westbury 3, and Westbury 5 have a 25 foot rear setback for the main structure? Did you know that there is a minimum percentage of brick that must be on your home? Did you know that you can't build in front of your building line? We want to help you! We want you to find out about possible violations before it costs you money and time. Several homeowners in the past couple years have had to tear down and/or modify their construction due to deed restriction violations. **The City of Houston does not review deed restrictions when issuing permits.** They require a signed affidavit acknowledging that the plans comply with your deed restrictions. This holds YOU, the homeowner, accountable for knowing and complying with your deed restrictions. We are here to help you. All deed restrictions are available online at www.westburycrier.com. If you have any questions, contact the WCC Office at 713-723-5437 or westburyc@sbcbglobal.net.

Links for Lost & Found Pets

- Nextdoor Westbury - www.nextdoor.com
- Westbury Lost and Found Pets Facebook
- Westbury CARE- Contact at westburycare@gmail.com or at www.westburycare.com, Compassionate Animal Rescue Efforts is located in Westbury.



Westbury Meet & Eat

Come out to Teotihuacan Mexican Restaurant at 6579 W. Bellfort every 1st Thursday of the month to meet Westbury residents. This event is open to anyone who lives in Westbury.

March Meet & Eat: Thurs., March 1, 6PM
April Meet & Eat: Thurs., April 5, 6PM



next stop:

nextlevel
URGENT CARE

Running a fever? Don't get burned by the hassle and expense of an ER. Get quick and easy care at Next Level Urgent Care.

Multiple locations in the Houston area
Open 9am-9pm, 7 days a week.
4936 Beechnut Street, Houston, TX 77096

Let's Get Appy!
 Next Level mobile app available now!



2018 Dues/Assessments

ATTENTION: PARKWEST 1&2

Homes purchased in Parkwest 1 after Jan. 1, 1993 and Parkwest 2 after Jan 1, 1994 have mandatory assessments.

The amount of the 2018 Mandatory Assessments is \$235.80. The 2018 Assessments are due by April 1, 2018.

If you have any questions or did not get your invoice, please contact the WCC office at 713-723-5437 or email westburycc@sbcglobal.net.

Mission of the WCC

The purposes of the Westbury Civic Club, Inc. (the "Club") are to improve the appearance of the Westbury area and promote the civic, cultural educational, health, and general welfare of the residents of the Westbury and Parkwest subdivisions in Harris County, Texas (collectively, the "Community").

Why do my dues go to Dallas? Is this correct?

Yes, this is correct! We have you mail your payments directly to our bank's processing center. This allows your payments to be processed immediately.

Why Should I Pay My Dues? What are the Benefits?

- Protects your investment in your home by keeping Westbury a strong and vibrant neighborhood.
- Keeps the doors of the Civic Club office open and staffed.
- Protects your home and family with the Westbury Area Patrol through Constable Precinct 5.
- Improves the looks of our esplanades, parks, and green spaces.
- Advocates for City services and infrastructure improvements
- Hosts two White Elephant Community Garage Sale events each year
- Organizes community get togethers such as Coffee with Constables and National Night Out

Please send this form in with your payment

2018 Westbury Civic Club Dues

By filling out this form, you are giving the WCC permission to send you communications. We DO not sell your information or give it out to other entities.

Name(s) _____
 Address _____
 Home Phone _____ Work _____ Cell _____
 E-mail _____

**Make checks payable to:
 Westbury Civic Club, Inc.**

**Mail to:
 P.O. Box 975182
 Dallas, TX 75397-5182**

**Online payment:
 paypal.com—Send Money to
 westburycc@sbcglobal.net
 Make sure to include your
 address or account number**

Want to send your support in multiple payments? You may choose any

amount to pay in any increment throughout the year.
 Here are a few examples:
 2 payments of \$167.50 is \$335/yr
 3 payments of \$111.67 is \$335/yr
 4 payments of \$83.75 is \$335/yr
 5 payments of \$67 is \$335/yr
 12 payments of \$28 is \$336/yr

Westbury Civic Club Dues*	\$50	\$
Westbury Area Patrol	\$285	\$
Subtotal	\$335	\$
Additional Contributions:		
Westbury Civic Club		\$
Westbury Area Patrol (WAP)		\$
Total		\$

*The Westbury Civic Club Dues encompasses all operations, programs, and services including greenspace, of the Westbury Civic Club, except patrol services.

Thank you for supporting the Westbury Civic Club and our important programs. We can't do it without you!
 To contact the WCC Office, email westburycc@sbcglobal.net or call 713-723-5437.

ENFORCEMENT OF CITY TRASH VIOLATIONS RESUMES ON MARCH 1

HOUSTON - In the wake of Hurricane Harvey's devastating floods, the Department of Neighborhoods (DON) placed a moratorium on the enforcement of heavy trash codes to give residents reasonable time to clear debris, junk and other materials from their properties. The City continues to make strides in the recovery and rebuilding process. On March 1, 2018, the department will resume heavy trash inspections and code enforcement operations in accordance with City of Houston Code of Ordinances Chapter 39.

The department is specifically responsible for inspections and code enforcement pertaining to littering, placement of trash containers for garbage collection service, rules that establish the items that will be picked up by city collectors, including junk and tree waste, and disturbance of contents of garbage collections containers. Other aspects of garbage collection are managed by the Solid Waste Management Department.

"Residents and city crews have had to operate under unusual circumstances over the last five and a half months to manage debris and waste from Hurricane Harvey," Mayor Sylvester Turner said. "Now we ask Houstonians to help us return to some degree of normalcy as the Department of Neighborhoods resumes enforcement aimed at preventing unhealthy or unsightly clustering of trash."

"In the aftermath of Harvey, many residents had to deal with unprecedented huge volumes of trash and debris, and our inspections teams made allowances by giving residents and property owners time to come up with the help and resources needed to comply with heavy trash guidelines," said department director TaKasha Francis. "With much of the cleanup now completed, we are resuming the enforcement of city guidelines for the proper and timely placement of heavy trash and tree waste and the proper placement and storage of garbage collection containers. The timely and proper placement of heavy trash and tree waste and proper placement and storage of trash containers are among the easiest actions residents can take to maintain nice neighborhoods, while noncompliance can result in citations and fines of fifty to two thousand dollars," said the director.
-Press Release from City of Houston

Proposed Changes to Chapter 19

The Houston Public Works Dept. presented information relating to proposed revisions to Chapter 19 of the Houston Code of Ordinances, which are the regulations governing development in the floodplain.

The proposed revisions include:

- ➔ Applying the floodplain management regulations contained in Chapter 19 to the 500-year floodplain (currently they only apply to the 100-year floodplain)
- ➔ Requires freeboard above the 500-year flood elevation (currently described as "x" feet; the administration recommends 2 feet, but this is specifically open to public comment). This would require any addition to the property to be elevated to the 500-year flood elevation plus two feet
- ➔ Prohibits any net fill in the 500-year floodplain

PUBLIC INPUT AND NEXT STEPS

Public input on proposed changes to Chapter 19 can be made by emailing the Houston Public Works Department at pwe.director@houstontx.gov. The ordinance will be presented to City Council on March 21, 2018. More information about the proposed revisions to Chapter 19, go to www.houstonrecovers.org

The Mayor has consistently pledged to do all he can to mitigate the flooding risk in Houston. To that end he has proposed some changes to Chapter 19. Something must be done and we applaud the mayor for moving forward quickly, however, some time is needed to study these changes. The WCC and WAIC have formed committees to look at these proposed changes and respond. How does adding the 500 year areas to the Flood plain ordinance affect those portions of Westbury that are in the 500 year flood plain? Will this affect our insurance rates? Will this change affect the pending CIP projects to replace our streets and storm sewers? If I want to substantially remodel my existing home in the 500 year flood plain, will I have to "bring it to code" i.e. raise it? What about if I want to add onto my existing square footage? Would all new homes in the 500 year flood plain be required to be pier and beam? Are there other implications?



KEEP YOUR HEALTH ON TRACK WITH HOUSTON METHODIST PRIMARY CARE

Houston Methodist provides the care you need to keep you and your family healthy. From regular checkups to more complex concerns, our board-certified doctors offer expertise and access to our network of world-class specialists.

Many of our practices offer:

- Online scheduling
- Most major insurance plans accepted
- Same-day appointments
- Convenient locations

HOUSTON Methodist
PRIMARY CARE GROUP

Visit houstonmethodist.org/pcg/central or call **713.394.6638** to schedule an appointment.

Only RAIN in the DRAIN!

It's very important that you prevent debris from blocking the flow of water to the storm drain inlet. It is vital to keep the water flowing in the storm drain pipes.

All you have to do is drive through Westbury during or after a storm and see all the leaves piling up and/or flowing into the storm sewers. Solid debris takes up space in the storm drain pipes, making them less effective in transporting storm water to our ditches and bayous. Small sticks, leaves, newspapers, and other trash become wrapped together and could clog and slow the draining on your street. Our storm drains in Westbury are old. They are original to the neighborhood and should be treated with care. Only rain in the drain!

Here are some things YOU should be doing every week and especially before a storm.

- ➔ Sweep & BAG the leaves out of the street.
- ➔ Clean the storm drain inlet in front of your home (if you have one)
- ➔ Street gutters are city property. If your neighbor doesn't sweep, do it yourself. It's worth protecting your own home with a little street sweeping. Maybe it will shame them into action.

Adopt a Drain

The City of Houston knows how important it is to keep our storm drains clean. They spend millions of dollars each year clearing them of debris. In April they will be kicking off an Adopt a Drain program. By pledging to keep your drain free of leaves and debris, you will be joining your neighbors in helping to protect the environment, manage stormwater, and minimize flooding.

These pictures should SHOCK you. THIS IS NOT OK!!! The top 2 photos are from a section of Westbury that floods! The bottom 2 pictures clearly indicate the problem with clogged drains.

CLEAN YOUR STOPRM DRAINS AND GUTTERS!



Keep Houston, District K & Westbury Beautiful Day

The WCC will be working in and around all of Westbury doing some much needed Spring cleaning! What is your passion? Would you like to work in a park? Pick your favorite green space. Is it Westbury Park, Chimney Rock Park, Hager Park, the Westbury Community Garden, or the Willow Waterhole? Or would you rather stay closer to home and sweep the street's storm gutters? Keeping our streets clean of leaves and debris will help keep our storm drains clear. Do you have an esplanade you'd like to see cleaned up? **Join us on April 7 at 9am at Westbury Park to sign up, get your supplies and pick your spot to spruce up for Spring.** This is always a family friendly event. Do you have a scout troop looking for a community service project? [Email westburygreen@gmail.com](mailto:westburygreen@gmail.com)



Summer Fun!

Swimming
Basketball
Badminton
Bible Study
Field Trips
Archery
Crafts

Golf
Tennis
Games
Bowling
Softball
Soccer
Wallyball
Skating

Gymnastics
Volleyball
Lacrosse
GaGa Ball
Nine Square
in the Air
& much more!

JOIN US FOR A GREAT SUMMER!

Children have a great experience at Day Camp. They get to be outside, be inside, play active games, learn about God and His world, do crafts, and make new friends.

Day Camp also has extended times in the morning and afternoon in order to meet the need created by single parent families and families where both parents work.

Westbury Baptist Summer Day Camp
will begin on

Monday, June 4

and run through Friday, August 24,
depending on worker availability.
Camp is for students in grades K-6.
Middle School Camp available!

REGISTRATION FEE

BEFORE MAY 1, 2018: \$220.00*

* \$135 goes towards tuition
\$85 non-refundable

MAY 1 & AFTER: \$315.00*

* \$135 goes towards tuition
\$180 non-refundable

For more information visit us at www.wbchouston.org

Or call us at (713) 723-6428 ext. 313



Willow Waterhole Seeks Volunteers

The Willow Waterhole Greenspace Conservancy is seeking to add members who are passionate about fishing, biking, and who have skills in fund raising/grant writing. Also needed are persons who have available time to input data into the Volunteer Houston application.

- ➔ If you are connected to fishing and biking organizations and enjoy the Greenway, then we would love to have your leadership in making it a better place for people with these passions.
- ➔ The Conservancy is embarking on greatly improving infrastructure, e.g. trails, roadways, parking, and the addition of amenities like the Levitt Music Pavilion, a pier, and a dog park. If you have experience in development/fund raising/grant writing, your skills would be highly appreciated.
- ➔ The Conservancy has a very active volunteer program with conservation workdays, Scout projects, and the Annual MusicFest. We need to improve time tracking, entering data into the Volunteer Houston application, and answering emails. The volunteer hours are often determinants in awarding grants.

If you are interested in these endeavors, please email the Conservancy at willowwaterhole@gmail.com. The Willow Waterhole Greenway is a great place and it can become even better because of you!

Save the Date for Music Fest 2018

Are you ready for some music? The Willow Waterhole's Music Fest 2018 is just a few months away. It will operate over two days, April 21-22, and feature 13 diverse professional groups and 10 student-school groups. Five of Houston's finest food trucks will be showcased and an "Artist Village" will provide a wide variety of works for sale. See next page for more details.

Audubon Society Bird Survey

Saturday, March 17, 8AM

Meet at the Gathering Place The Willow Waterhole Bird Survey was started in June 2007 and is held on the third Saturday of each month.

Girl Scout Gold Project Completed

Madison Contreras (in red UofH sweatshirt), a girl scout with Troop 1126 affiliated with St. Thomas More Catholic Church, completed her Gold Award project on December 23rd. She installed two bat conservatories, each bat housed there will eat approximately 1000 mosquitos a night. This project helps balance the ecosystem and adds to the natural habitat. Helping Madison were fellow troop members, school friends from The Duchesne Academy, and her father and grandfather.



Work Days at WWH

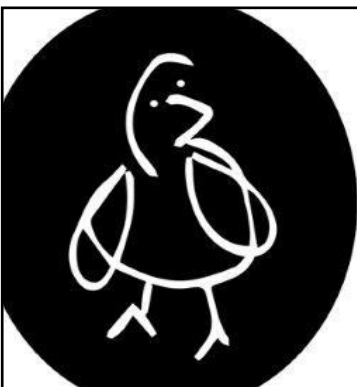
Students from Trafton Academy spent Saturday morning February 17 mulching trees at the Greenway. They moved 20 cubic yards via wheelbarrow and hand carried bins to approximately 150 trees.

Thanks to all the students and their teachers Trudy Holmes and Jan Stone.



Emery Weiner (EW) 7th grade students and teachers came to perform conservation work on February 1. Each year EW has a community service day and the Conservancy was so

pleased they chose the Willow Waterhole, not too far away. In addition to moving mulch to trees, they were also led on an educational walk by Conservancy member Howard Sacks. It was a great day for everyone.



Are you looking for a reliable dog walker or pet sitter for while you are at work or on vacation??

Boon Pet Care
is here for you!

As Westbury residents, we are committed to taking the very best care of our neighbors' loved ones.

Check out our website for pricing and details: www.booncare.com

Or contact us today: booncare@gmail.com or 713.936.2623

• blues • jazz • latin • rock • r&b •
• country & western • big band • cuban •

Willow Waterhole 2018 MUSIC FEST

Saturday & Sunday

April 21st & 22nd
11am-9pm • 11am-8pm

TWO DAYS OF
FREE LIVE MUSIC
in a
RELAXING SETTING!

Willow Waterhole

5300 Dryad Dr, Houston, TX 77035
PARKING HAS CHANGED! SEE MAP AT:
WillowWaterhole.org/musicfest-parking

PROFESSIONAL BANDS &
AREA SCHOOLS
ARTIST VILLAGE
BOTH DAYS 11AM TO 6PM



»»» **HOUSTON'S FINEST FOOD TRUCKS!**
BRING YOUR FAVORITE CHAIR OR BLANKET.

Learn more at WillowWaterhole.org Fan us at [facebook.com/willowwaterhole](https://www.facebook.com/willowwaterhole)

Hosted by:



Rotary Club Plants Over 200 Trees at Willow Waterhole

Rotary Club members from all across Houston converged upon the Willow Waterhole on January 13 to plant trees. Over 100 members attended and 239 trees were planted. The trees were donated by Trees for Houston and included Chinese Fringe, Sweet Gum, Live Oak, Little Gem Magnolia, River Birch, and Bald Cypress. The Rotary project is part of a nationwide goal for the group to plant 1.2 million trees in 2018. The event at the Willow Waterhole was a huge success, thanks to all involved.



Raw Sewage

Ewwwww. Here is sewage water bubbling up from a sewer cover at the NE corner of Willowbend at Albury and then draining into a nearby street stormwater drain (which flows untreated into a bayou and then into Galveston Bay). The problem was reported to 311, but it took several days to stop. If you can see toilet paper, then it isn't rainwater!



Help Keep Westbury Homes Beautiful

Spring has sprung! It's a great time to get outside and start those projects that were put off due to the winter weather.

Home Maintenance

Please take note of your property. Is your sidewalk a trip hazard? Is the paint on your home peeling? Are portions of wood on your home rotting? Is your fence in need of replacement? Does your lawn have large bald spots? These expenditures are necessary to the upkeep of your home.

Dirt/Mold

Please take a long look at your home and remove any dirt and mold build up on the gables, fascia boards, brick, window casings, gutters, and sidewalks.

Sidewalks, Driveways & Curbs

Please remember, according to the City of Houston, it is the responsibility of the homeowner to construct, reconstruct/repair, or bring to grade the sidewalks, driveways, curbs or gutters adjacent to their property. We appreciate your assistance in helping to make Westbury safe.

Yard Maintenance

It is time again to get your yard work done on a regular basis. During the winter it may not have been necessary to cut your grass on a weekly or bi-weekly basis. The spring weather will help the grass grow much faster and require more upkeep.

Leaves

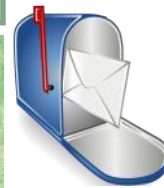
Properties should be kept in a neat and attractive condition. Please collect and remove all leaves that have fallen on and in front of your property. The piles of leaves in the street are clogging up the street drainage system, causing drainage to be delayed or blocked.

Yard clippings

Bagged yard clippings may not be left at the curb before trash day. They must be put out of sight until 6 p.m. the evening before a trash collection day. If your clippings are missed by the

Westbury Hot Topics

The Westbury Civic Club gets hundreds of emails and calls a month and many people have the same questions. This new monthly feature will contain last month's hot topics!



Deed Restrictions

February was all about deed restriction violations. Every home in Westbury is subject to deed restrictions. There are over 30 sets for the 5,000 homes. Most of the deed restrictions were written in the late 1950s as the neighborhood was being developed. Since the City of Houston has no zoning, this is our only protection and way to keep our Westbury wonderful. While all the sets are actively enforced, the time has come to start a major revision to update the wording and define what the current deed restrictions mean. It is not meant to make new rules or change anything major, it is the only way to ensure successful enforcement of the deed restrictions. If you are interested in being part of this committee, please contact Jennifer Edmondson at westburycc@sbcglobal.net. This is new effort and will likely be slow but needs to start. It is no longer 1959 and we need to update our deed restrictions to 2018. We are seeing more and more new builds, additions, elevations, etc. that warrant the need for clarity and updated restrictions.

"CAMP OUT" IN TOWN AT WESTBURY CHRISTIAN
MAY 29 - AUG. 3, 2018

Students ages 3-10

Details and Registration:
westburychristian.org/summerprograms
Questions? 713-551-8100 ext. 2013 or
SummerASAP@westburychristian.org

Westbury Christian School
10420 Hillcroft St., Houston, TX 77096

SUMMER ASAP!

Westbury Community Garden News

VegOut! For National Nutrition Month

Do you wish that you or your children ate more vegetables? Do you need more variety in your meals? March is National Nutrition Month. Did you know that according to new studies, eating fruits and vegetables every day will make you happier?

Take the "VegOut! 30 Days in 30 Ways Challenge" to be healthier and happier! This challenge is sponsored by the Westbury Community Garden, Recipe for Success, and The John P. McGovern Museum of Health and Medical Science.

Join us at the Westbury Community Garden each Saturday in March for a series of fun, delicious, and educational events where you learn more about how to keep a balanced diet, growing your own vegetables, and other topics. In addition, guest chefs will demonstrate recipes you can try at home. You won't want to miss the final event on March 25th, which will feature a Veggie Party. Download the app (VegOut!) to record your success.

VegOut! Events with Westbury Community Garden, Recipe for Success, The Health Museum
Saturdays, March 3, 10, 17, & 24 at 2PM – 3:30 PM



WHERE IS THE GARDEN?

12581 Dunlap (77035) is off Hillcroft between W. Airport and South Main. Heading south on Hillcroft, turn right onto Greencraig, follow it around the bend where it turns into Dunlap. The large blue roof on the WCG Pavilion is readily visible. Street parking.

JOIN the garden TODAY at
www.westburycommunitygarden.org

Contact us today at
membership@westburycommunitygarden.org



Westbury... **WE ARE TAKING THE CHALLENGE!**

Veg Out!
with
Recipe for Success

WHERE:
 Westbury Community Garden
 12781 Dunlap St.

WHEN:
 March 3, 10, 17 and 24
 2:00 PM to 3:30 PM



VEGGIES!
30 WAYS IN 30 DAYS
TAKE THE CHALLENGE!

VegOutWithRFS.org

March is National Nutrition Month

1. Download the phone app or get the paper tracker at VegOutWithRFS.org
2. Take the VegOut Challenge, Westbury! Start tracking the veggies you eat March 1 - 31.
3. Come to Westbury Community Garden to learn about healthy eating and growing vegetables.
4. Taste some amazing veggie recipes and make them at home.

It's delicious fun for the whole family!

Check the WestburyCommunityGarden.org calendar for details on each Saturday event.

RALPH RIEGER, CPA

We believe in service above Self!

Giving our clients peace of mind with sound tax planning and financial advice, effectively representing them in dealing with the tax authorities, and timely, tender, loving care in preparing their tax returns. Helping Texas business owners make their dreams come true by helping them create extraordinary businesses.



11415 Chimney Rock rieger@riegercpa.com 713-729-1122

LEWIS CONSTRUCTION
 Same Name, Same Number Since 1991
713-944-5257

 Myron Lewis, Owner
 Fax 1-888-850-3742
 lewiscosince1991@gmail.com
 Complete Home Remodeling


 www.YourCompleteHomeCare.com

FREE ONE-HOUR INITIAL CONSULT INCLUDING REVIEW OF PRIOR YEAR TAX RETURN!!!!!!
Pam Schertz, CPA, LLC
 Small Business Computerized Accounting Services & Training
 Certified QuickBooks Pro Advisor
 Individual & Small Business Tax Returns
 Payroll processing and tax filing.
 5322 W. Bellfort Ste. 103
 Call for appointment today
 281-974-2096



Maxx Gonzalez
 El Arte D'Pintar
 Expert Int./Ext. Paint
832-212-0739
 maxx@maxxgonzalez.net
 www.maxxgonzalez.net
 ♦Sheetrock Repair ♦Stain
 ♦Fancy Texture ♦Walls ♦Faux Finishing



ASTRO PLUMBING
 "YOUR PROFESSIONAL PLUMBER"
 BEST PRICES ♦ FREE ESTIMATES ♦ SENIOR DISCOUNT
CALL JOHNNY
 Cell: 713-256-0017
 JOHN LEWIS M16312
 ALL MAJOR CREDIT CARDS ACCEPTED

Legal Eagle CONTRACTORS REMODELING
 Since 1974
 www.legaleaglecontractors.com
 Houston's Most Trusted contractors



ACCREDITED BUSINESS
 BBB Rating: A+


Dan Bawden, Master Builder
713-723-8850
 Come see our Showroom at **5008 Locust Street** at South Rice, Bellaire
Design and Build Kitchens ★ Baths ★ Additions
 Westbury's favorite remodeler for over 25 years!




Senior-focused Remodeling is our Specialty

We Know Westbury and Call it Home for 39 Years!

COLDWELL BANKER
 UNITED, REALTORS®
 Buying, Selling Or Leasing

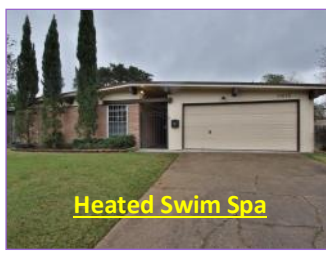
Tony & Charlsey Porcarello
 *** Top Producers + Westbury Specialist ***
 Tony: 713-898-1546 - tporcarello@yahoo.com
 Charlsey: 713-898-1484 - charlsey@swbell.net



5522 Belrose Dr.
\$440,000



10811 Moonlight Dr.
L@K WE SOLD ANOTHER ONE!



11015 Doud St.
\$289,000



11907 Mullins
\$185,000