

WESTBURY IS A DEED RESTRICTED COMMUNITY. DEED RESTRICTIONS ARE ACTIVELY ENFORCED.



Westbury Crier

VOLUME 69, ISSUE 1

JANUARY 2024

WOW WORKING ON WESTBURY

**Sunday, January 21
2-3:30PM**

Join WCC board members at the Willow Waterhole for our monthly clean-up. This month we will host a litter pickup at the Willow Waterhole.

Meet in the parking lot on Dryad near the Gazebo on Sunday, January 21, from 2-3:30PM. The WCC will provide trash bags and grabbers for you to use. This is a great volunteer opportunity for the whole family.



Keep Westbury Beautiful

IN THIS ISSUE:

President Message	3
Platou Center Calendar	4
Event/Trash Calendars	5
2024 Highlights	7
All About Trash	8 & 9
Westbury Library Preview	10
2023 Election Results	11
Support the Constable Program	12
Crime Stats	13
Willowbend Traffic Study	14
Westbury Community Garden	15
Willow Waterhole	15

Support the Westbury Civic Club — Pay your 2024 Dues

Thank you to everyone who paid their 2023 Dues. Westbury would be a very different neighborhood if it weren't for the residents who pay their annual dues and volunteer their time. Having a strong civic club advocating on behalf of the neighborhood, enforcing deed restrictions, and beautifying the public areas is so important to Westbury's future. Won't you become a part of it? Read about the Westbury Civic Club (WCC) accomplishments in 2023 on page 7.

Westbury needs every one to pay their dues

The WCC cannot function without YOU! A safe, secure, nice place to live is what we all want. Your financial support helps to keep the WCC up and running and is the main reason that Westbury has been listed as one of the top neighborhoods in Houston.

The WCC Dues are just \$60 per year

Your Westbury Civic Club dues pay for office space, an office manager fielding a wide range of WCC tasks including assisting the WCC board, support for residents, outreach projects and producing the Crier. The dues also beautify our esplanades and parks.

Contribute \$325 Towards the Westbury Area Patrol

The Westbury Area Patrol (WAP) puts certified police officers in our neighborhood and on our streets. Their visibility coupled with their quick response time makes them an invaluable component of our neighborhood safety plan.

Learn more about the Westbury dues and assessments on page 6.

NEW WESTBURY LIBRARY PREVIEW

Check out page 10 for preview of the amazing new library coming to Westbury!



Online Owner Portal

Have you joined the new owner portal? We have over 400 owners already registered. This portal isn't just about paying dues and assessments. It is a two-way communication. You can message us, submit house plans, ask questions and it will remain in your history. We can email you the Crier newsletter, security notices, surveys, etc.

Join your neighbors today and get connected!



SPECIAL TRASH FEATURE Pages 8 & 9

- What is the difference between Junk Waste & Tree Waste?
- Where are the City's recycling centers?
- When is heavy trash pick up?

All these answers and more on pages 8 and 9.



HEAVY TRASH RECYCLING

January 2024
Thursday, January 11
TREE WASTE ONLY

February 2024
Thursday, February 8
JUNK WASTE

January 2024
Thursday, January 11
Thursday, January 25

February 2024
Thursday, February 8
Thursday, February 22

IMPORTANT CONTACTS

WCC OFFICE

5322 W. Bellfort #100, Houston, TX 77035
Jennifer Edmondson.....WCC Office Manager

Westbury Civic Club Office
Monday—Thursday—Appointment needed
WCC Office Closed Friday—Sunday

NOTARY SERVICES— available to paid WCC members

CONTACT US

WCC Office Telephone.....713-723-5437
WCC Office Email.....westburycc@sbcglobal.net
Deed Restrictions.....westburycc@sbcglobal.net
WCC President.....wccpresident@westburycrier.com

Visit our website at www.westburycrier.com
“Like” us on Facebook at Westbury Houston

SECURITY

Pct. 5 Constables (WAP).....281-463-6666
Report property crimes, suspicious activity, and vacation watch
Emergency.....911
Houston Police Dept. Non-Emergency..... 713-884-3131
Southwest HPD Station832-394-0400

CITY OF HOUSTON

District K CM, Martha Castex-Tatum.....832-393-3016
District C Council Member, Abbie Kamin.....832-393-3004
Deed Restriction Enforcement (City Legal).....832-393-6333
Platou Community Center.....713-726-7107
Mayor’s Citizen Assistance Office.....832-393-0955
Houston Help & Information.....311
*For missed garbage pickup, water line breaks, potholes
sewer repairs, dead animals, traffic signals, heavy trash
violations, neighborhood nuisances, and other city services*

CENTERPOINT ENERGY

Electric outage.....713-207-2222
Suspected natural gas leak.....713-659-2111
Street light repairs.....713-207-2222
Make sure to give pole number

OTHER IMPORTANT CONTACTS

County Commissioner Rodney Ellis.....713-755-6111
County Commissioner Lesley Briones.....832-927-4444
Graffiti.....www.braysoaksmid.org
Shopping Cart Removal.....www.braysoaksmid.org
Brays Oaks Mgmt. District - Use “report a problem” link
Poison Control.....1-800-764-7661
Harris County Tax office.....713-368-2000
Harris County Appraisal District.....713-957-7800

2024 WCC BOARD OF DIRECTORS

Contact the Westbury Civic Club at 713-723-5437 or
westburycc@sbcglobal.net.

EXECUTIVE BOARD

President.....Cindy Chapman
wccpresident@westburycrier.com
Vice President.....Marcia Hartman
Secretary.....Lindsey Pollock
Treasurer.....Becky Edmondson

DIRECTORS AT LARGE

Deed Restrictions.....Maggie Donovan
Flood Control & Infrastructure.....Jennifer Edmondson
Greenspace Beautification.....Mat Funk
Security.....VACANT
At-Large 1.....Reagan Dunkin
At-Large 2.....Andrew Jefferson
At-Large 3.....VACANT
At-Large 4.....VACANT

SECTION DIRECTORS

Westbury 1..... Travis McClelland
Westbury 2.....VACANT
Westbury 3.....Sylvia Rosales
Westbury 3.....Jonathan Hansen
Westbury 4.....VACANT
Westbury 4.....Becky Pate
Westbury 5.....VACANT
Westbury 5.....Donna Strom
Westbury South.....Ryan Cowley
Parkwest 1..... VACANT
Parkwest 2.....Bob Droubi
Parkwest 3Alan Hirshman

**POSTED WCC BOARD VACANCIES CAN BE FILLED AT
ANY REGULAR MONTHLY BOARD MEETING.**

NEWSLETTER INFORMATION

Published by.....Westbury Civic Club, Inc.
Editor-In-Chief..... Jennifer Edmondson
Edited by.....WCC Publication Committee
Advertising..... 713-723-5437/ westburycc@sbcglobal.net

Ad Disclaimer: *The WCC neither represents nor
endorses an advertisement in the newsletter. Perform
your own due diligence before contacting any advertiser.*



Westbury Civic Club , Inc.

© Copyright WCC 2024, All Rights Reserved

WESTBURY IS A DEED RESTRICTED COMMUNITY. DEED RESTRICTIONS ARE ACTIVELY ENFORCED.

A MESSAGE FROM THE WESTBURY CIVIC CLUB PRESIDENT

I wish you all a very HAPPY NEW YEAR for 2024! January is a month promising new beginnings and fresh starts for the year, and we are fortunate that our January weather here in Houston tends to be much more moderate and pleasant than in many other places.

Do you make a New Year's Resolution each year? Each year I strive to take steps to improve both body and mind, and also to make my community better in some way. Years ago, I used to donate to large national charities (and I still sometimes do), but now I prefer to support my immediate community and find ways to help make it better by contributions of volunteer time and monetary contributions.

Letters I send on behalf of the Westbury Civic Club (WCC) sometimes end with the phrase, "Join us in making Westbury the safest, cleanest, greenest neighborhood in Houston." Safety is the highest priority, which is why the Westbury Civic Club spends so much money on the law enforcement services provided by our contract with the Precinct 5 Constable's Office. Currently the WCC pays 80% of the cost and Harris County pays 20% of the cost. Our officers are licensed law enforcement officers, who patrol our city streets and at times provide assistance to the Houston Police Department (since we do not receive services from the county sheriff's office), which is why, historically, the cost has been shared by the county and the contracting communities.

I regret to say that the county has once again been trying to curb or cut the Constable patrol programs. Back in 2019,

the county discussed forbidding the constables from being able to serve on community patrol contracts, so Becky Edmondson and I went to Commissioner's Court to protest, and complaints were submitted by so many that the county decided to keep the community patrol contract program in place. However, last month in December, Commissioner's Court put on the agenda an item to discuss dramatically increasing the costs of the constable program, for both existing contracts and any future contract positions. The proposed 20% increase in cost would make the program too expensive for us, because even at our current level of 3 constable officers we had to dip into our financial reserves to pay for the 2023 program cost. Looking to the future, the WCC would love to be able to add back the 4th Constable position that we had to drop for financial reasons a few years ago.

Unlike many communities that pay for a Constable Patrol, most of our income is from voluntary dues. Even our homes that have mandatory assessments are not allowed to have a price increase exceed the cost of inflation, so we do not have a mechanism to raise the needed fees to match any excessive cost increases if the county imposes one.

I sent letters to the three Harris County Commissioner's Court members (Commissioner Briones, Commissioner Ellis, and Judge Hidalgo) who represent us here in Westbury, imploring them to keep the Constable Program affordable. Becky Edmondson also sent a letter. Ultimately enough concerns were raised by the communities that participate in the

program, that the item was dropped from the agenda for December. However, please be aware that our beloved Constable Patrol program is still not fully safe, and the county continues to "evaluate" the program.

This topic is a reminder that our Constable patrol program is not free. Services cost money, and the money comes from the assessments, dues, and additional contributions from neighbors living here in Westbury. This is the time of year when you have already or will soon be receiving a letter from the Westbury Civic Club to remind you of the annual assessment, or dues, for your property here in Westbury. This newsletter has a summary of accomplishments and activities by the WCC during 2023. I have every confidence that 2024 will be an amazing and great year here in Westbury. As a bookworm and lover of books, I look forward to the opening of the new Dr. Shannon Walker city library that has been built right here in the heart of Westbury. And the amenities over at Willow Waterhole get better and better every year. I can remember when the Harris County Flood Control District first started "the big digs" to create those detention lakes – they cut down almost every tree and scraped the land bare. The picnic area along the Dryad parking lot now has mature trees and shade, but I remember back when those trees were spindly baby trees. You know the old saying – the best time to plant a tree was 20 years ago, and the next best time to plant a tree is today!

Happy 2024!
Cindy Chapman

2024 Westbury Civic Club Board Meetings

3rd Wednesday of each month at 7PM, Westbury Baptist Church, Game Room

January 17
February 21
March 20
April 17
May 15
June 19*
July 17*
August 21
September 18 — WCC Annual Meeting
October 16
November 20

*Please note the WCC board might vote to cancel one of the summer meetings



Platou Community Center at Chimney Rock Park

11655 Chimney Rock Rd
 713-726-7107
 platou@houstontx.gov



Supervisor— Dajai Tennard
 Email—Dajai.Tennard@houstontx.gov

Platou Center is open from 11AM—7PM,
 Monday—Friday

Coming Soon to the Platou
 New Genealogy Classes
 Hosted by Pat Melcalfe
 Contact Pat at 713-208-1083
 STEM Family Fun Day
 January 27, 10am-2pm
 STEM activities, crafts and entertainment

SPRING ACTIVITY CLASS SCHEDULE

- Senior Fitness — M/W/F, 9:30-10:15AM
- Table Tennis — M/F, 10:30AM-12:30PM
- Quilting — Tuesday, 9:30AM –1:30PM
- Senior Games — Wed, 10:30AM—12:30PM
- Chair Yoga — Thursday, 10-11AM
- Line Dancing—Thursday, 11AM-12PM

2024 Platou Center Social Events

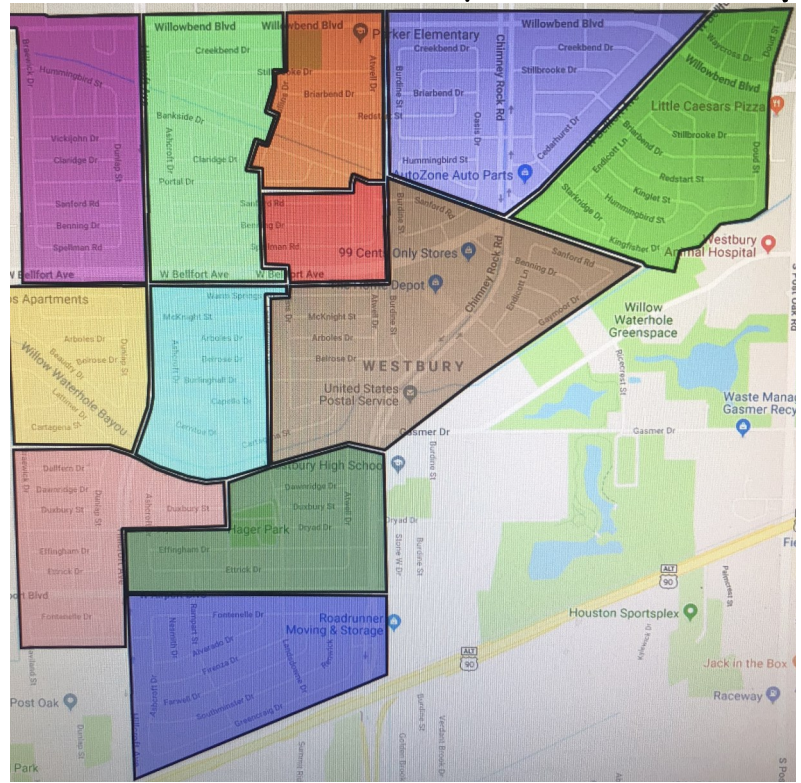
- Mardi Gras/ Valentines -February 13
- Spring Fling Brunch -April 17
- Summer Daze- May 28



PLATOU CENTER HOLIDAY SOCIAL POTLUCK



Map of Westbury by Section



Westbury is the 2nd largest neighborhood in the City of Houston with 5,000 homes. One reason Westbury has remained such a viable and desirable neighborhood is because of the very active Westbury Civic Club. The WCC has been advocating and working hard for the neighborhood for over 60 years. We often refer to different sections when talking about current or upcoming city projects, crime, or events.

	Parkwest 1	198 homes
	Parkwest 2	445 homes
	Parkwest 3	311 homes
	Westbury 1	543 homes
	Westbury 2	530 homes
	Westbury 3	853 homes
	Westbury 4	834 homes
	Westbury 5	501 homes
	Westbury 5	150 homes
	Westbury South	563 homes

What's Happening in Westbury

January 2024 Events & Meetings

Tues 9	HISD back to classes	
Thurs 11	Heavy Trash - Tree Waste ONLY	
Wed 17	WAIC/Super Neighborhood #37 Meeting Southwest HPD Station—Community Room	10AM
Wed 17	Westbury Civic Club Board Meeting Westbury Baptist, 10425 Hillcroft, Game Room	7PM
Sat 20	Audubon Bird Survey Willow Waterhole, 5310 S. Willow See page 15 for more information	7AM
Sun 21	WOW: Working on Westbury Litter pick-up volunteer work day Willow Waterhole, Dryad parking lot near Gazebo	2-3:30PM
Sat 27	Family Fun Day Platou Center, 11655 Chimney Rock STEM arts and crafts	10AM-2PM

February 2024 Events & Meetings

Thurs 8	Heavy Trash - Tree Waste ONLY	
Sat 17	Audubon Bird Survey Willow Waterhole, 5310 S. Willow See page 15 for more information	7AM
Sat 17	WOW: Working on Westbury Litter pick-up volunteer work day Willow Waterhole, Dryad parking lot near Gazebo	9-10AM
Wed 21	WAIC/Super Neighborhood #37 Meeting Southwest HPD Station—Community Room	10AM
Wed 21	Westbury Civic Club Board Meeting Westbury Baptist, 10425 Hillcroft, Game Room	7PM



All About Trash

Trash, yard waste, recycling, and heavy trash are picked up by the City of Houston.



Regular Household Trash

Pick-up is EVERY Thursday. Regular household trash goes into the black trash can.

Yard Waste

Pick-up is EVERY week either on Thursday or Saturday or any day the City decides to come by. Yard Waste MUST be placed in the correct City bio-degradable bags.



Recycling in Westbury

All of Westbury recycles on Schedule A. Recycling is every other week. Recycling goes into the green trash can.

January 2024	February 2024
Thursday, January 11	Thursday, February 8
Thursday, January 25	Thursday, February 22

Heavy Trash Schedule

All of Westbury is on the same schedule for Heavy Trash. Pick-up is on the 2nd Thursday of every month. Odd months are TREE WASTE ONLY and even months are JUNK WASTE months.

January 2024	February 2024
TREE WASTE ONLY	JUNK WASTE
Thursday, January 11	Thursday, February 8

Important Trash & Recycling Info

- ♻️ Regular trash pickup is every Thursday.
- ♻️ Recycling is every other Thursday.
- ♻️ Heavy Trash is once a month, 2nd Thursday.
- ♻️ Yard waste is picked up on Saturdays.
- ♻️ Westbury is on Recycle Schedule A
- ♻️ NO Plastic Bags in green recycling bins
- ♻️ Trash cans need to be on curb by 7AM each Thursday
- ♻️ Trash cans must be removed by 10PM each Thursday
- ♻️ Trash cans must be placed at least 3 feet apart
- ♻️ Trash cans must be stored out of sight.
- ♻️ Yard waste MUST be in correct biodegradable bags with City logo
- ♻️ Call 311 for all trash questions and complaints
- ♻️ Nearby Trash Depositories and Recycling Centers:
 - SW Trash Depository/Recycling Ctr - 10785 SW Frwy**
Hours: Wed.—Sun. 9AM to 6PM;
Accepts Junk Waste, Tree Waste & Recyclables.
 - Environmental Service Center - 11500 S. Post Oak**
Hours: Tues/Wed 9AM-3PM; 2nd Sat 9AM-1PM.
Accepts Hazardous Household & Electronic Waste.
- ♻️ Refer to www.houstontx.gov for more trash and recycling information

Support the Westbury Civic Club Pay your 2024 Voluntary Dues TODAY!

Westbury is a unique neighborhood with the majority of the 5,000 homes having voluntary dues. Only about 450 homes in Parkwest 1 and Parkwest 2 have Mandatory Assessments. The active participation of volunteers and yearly dues contributions help the Westbury Civic Club achieve our goal and remain active in the City of Houston. The total voluntary dues requested for 2024 is \$385. This includes the WCC Dues and Westbury Area Patrol.

PLEASE NOTE: All homes are subject to the deed restrictions whether the dues are paid or not. All sections of Westbury and Parkwest have ACTIVE deed restrictions.

How To Pay Your Dues/Assessments

There are several ways to pay your dues or assessments.

1. Activate your NEW online portal and pay directly online either via credit card or bank account.
*Once your account is activated (the WCC office must approve), you can view invoices, make payments, setup payment plans, make requests, view calendar and much more. Use the this handy QR to start your online account today!
2. Hand deliver* or mail a check to the WCC Office.
5322 W. Bellfort, Suite 100, Houston, TX, 77035
Make checks payable to the Westbury Civic Club
*There is a drop slot located at the bottom of the WCC office door.
3. Pay via PayPal. You may choose a specific amount or use the custom payment option to enter any amount or additional donation. You can find the link to our paypal page on our new website, www.westburyhouston.com.



Westbury Civic Club Voluntary Dues Form

Name _____

Address _____

Email _____

Phone _____

Included payment is for the following:

- WCC Voluntary Dues - \$60
- WAP Westbury Area Constable Patrol - \$325
- Mandatory Assessments - \$290 (2024)
- Extra Donation (please specify WCC or WAP)
- _____

2024 WESTBURY VOLUNTARY DUES

Westbury Civic Club Dues - \$60

The WCC has been vital in keeping Westbury a desirable neighborhood over the past 60 years. The WCC helps maintain 7 miles of esplanades, issues the Westbury Crier monthly newsletter, enforces deed restrictions, provides community events and acts as a very important liaison with the City of Houston while advocating for Westbury. In a City the size of Houston, it is important to make sure you have someone representing you and your neighborhood. The WCC has done a good job of maintaining Westbury for over 60 years. Your contribution helps covers everything needed to operate and maintain the services we provide, this includes office rent, utilities, insurance, postage, printing, legal and professional fees, salary, etc. The WCC has one employee and all other work is done by Westbury board member volunteers, this allows us to keep our costs lower.

Westbury Area Constable Patrol - \$325

The WCC has a contract with Harris County, Precinct 5, Contract Deputy Program to patrol Westbury and provide 24-hour response. This program is referred to as the Westbury Area Patrol (WAP). The WAP currently consists of three Constables (2 Deputies and 1 Sergeant) that are assigned patrol Westbury daily. The Contract Deputy Program is designed so that even when a Westbury deputy is unavailable, the next closest Pct. 5 Constable will be dispatched. Several of our bordering neighborhoods (Meyerland, Maplewood, and Marilyn Estates) also participate in the Pct. 5 Contract Deputy Program, so deputies are typically nearby at all times.

The Harris County Pct. 5 Constables are certified peace officers, licensed by the State of Texas to enforce the laws of the State of Texas. The deputies are uniformed, armed and drive distinctively marked, emergency equipped, law enforcement vehicles. The Constables provide high visibility, rapid response to emergency and non-emergency calls, vacation watches, alarm monitoring, and home security checks. The WCC gets regular crime reports from our Sergeant to ensure that the WCC is kept up to date with crimes in our area.

2024 MANDATORY ASSESSMENTS

2024 Mandatory Assessments - \$290

Owners in Parkwest 1 and Parkwest 2 revised their deed restrictions in 1993 & 1994 to include Mandatory Assessments.

➔ Properties in Parkwest 1 that have a new owner of record after the January 1, 1993, are subject to the Mandatory Assessment clause.

➔ Properties in Parkwest 2 that have a new owner of record after the January 1, 1994, are subject to the Mandatory Assessment clause.

The Mandatory Assessments are due annually on February 1. The 2024 Mandatory Assessments are \$290. The WCC has launched our NEW online owner portal. This now makes it easy to view, track, and make payments online. The 2024 invoices for Mandatory homes will be mailed in January to the address on record. If you do not receive your invoice, please sign up for your new online owner portal (use the handy QR code to the left) to view a copy or email westburycc@sbcglobal.net. If you have past due assessments and would like to set up a payment plan, please email the WCC office at westburycc@sbcglobal.net.

**WESTBURY IS A DEED RESTRICTED COMMUNITY.
DEED RESTRICTIONS ARE ACTIVELY ENFORCED.**

2023 WCC ACCOMPLISHMENTS & HIGHLIGHTS

ANNOUNCEMENTS

WCC Monthly Board Meeting

3rd Wednesday of each month at 7PM
Westbury Baptist Church Game Room
Next Meeting—Wednesday, January 17

CONTACT THE WESTBURY CIVIC CLUB

WCC Office— westburycc@sbcglobal.net
713-723-5437

WCC President—
wccpresident@westburycrier.com

Owner Portal— Send general request
through your account

Social Media—
Facebook—Message Westbury Houston

WCC Office FAQ

House Plan Review - Form is online at
www.westburyhouston.com. Submit
plans and completed form to the WCC
office at westburycc@sbcglobal.net

Statement of Account - Email the WCC
office at westburycc@sbcglobal.net

Resale Certificates - Info and form is
online at www.westburyhouston.com

Deed Restrictions, Policies, By-laws
www.westburyhouston.com

Account Balance - Set up your PayHOA
account today.

Join the WCC Board?

Come to the next meeting and join this
great group of volunteers maintaining
and making our neighborhood a great
place! We welcome any Westbury
homeowner to join! We need YOU!

Open Board positions*

At Large directors (two positions)
Security director

Westbury 2 Section Director
Westbury 4 Section Director
Westbury 5 Section Director
Parkwest 1 Section Director

**Must be the listed owner of record for
your Westbury property in order to be
on the WCC board. Section directors
must live in the section representing.*

Join the WCC Green Team today!

Work on keeping Westbury Green!
Help maintain our esplanades and sign
gardens, and much more! Sign up today,
www.westburyhouston.com

Support for Our Residents

The WCC office handles hundreds of
questions from residents each year, and
many problems are resolved by working
with the District K City Council Office, the
Department of Neighborhoods, HISD, and
the Solid Waste Department. The WCC
works with City Legal or our own attorney
to resolve possible deed restriction
violations. The WCC works with HPD and
various City Departments to assist
residents who have complaints with
violations of city regulations. We sponsor
a Yard of the Month program, organize
Keep Westbury Beautiful cleanup
activities, and sponsor Neighborhood
Night Out in October. The WCC launched
a new website and owner portal to help
improve communication.

Communications

Westbury Crier — Since July 1956, the
WCC has produced its monthly news-
letter, the Westbury Crier, now a 20
page, full-color newsletter paid for
primarily by advertising. The Crier is
delivered to the doorstep of each
Westbury home by members of the
Westbury HS Baseball team.

Social Media — The Westbury Houston
Facebook page has 3,762 followers. We
post event reminders, trash updates, City
alerts and more. Facebook is an efficient
way to communicate quickly.

New Website — Our new website,
www.westburyhouston.com, is frequent-
ly updated. The deed restrictions for each
section, the WCC policies and by-laws are
posted. Each Westbury Park has an
updated page with photos. Voting for the
Online Holiday decoration contest was
done through the new website this year.

New Owner Portal — The WCC finally
launched an online owner’s portal which
allows residents to view their accounts as
well as pay online. Registered owners
can message the WCC office through the
portal for a quicker response time.

Security

Having a safe neighborhood is a number
one priority. As a community, we can
help each other stay safer by knowing
who our neighbors are and by paying
attention to odd or unusual situations.
To this end, the WCC supports the Na-
tional Night Out events in October. Becky
Edmondson and Marcia Hartman visited
every party that registered with the
office. The WCC works closely with the
HPD and members attend the monthly
PIP meetings. The WCC works closely
with HPD DRT officers who have special
training. The WCC contracts with Harris
County Precinct 5 to provide officers for

the Westbury Area Patrol (WAP), whom
we hire by paid contract to patrol and to
respond to resident calls with licensed
law enforcement officers. The WAP
sergeant coordinates with the WCC to
oversee the program. The Constables
have set up speed traps in several hot
spot areas. More than just a patrol ser-
vice, Pct. 5 has undercover and investiga-
tion divisions that go to work for us when
criminal situations arise.

Advocacy

We strongly advocate on behalf of all of
Westbury, from infrastructure repairs to
new facilities, the WCC is always pushing
for Westbury. The biggest accomplish-
ment for 2023 is the brand new library in
Westbury! The WCC has been advocating
for this library for over 7 years and we
are excited about the soon to be open-
ing. See page 10 for more information
and pictures of the new library.

The WCC spoke to City Council regarding
substandard Texas General Land office
rebuilt in Westbury that violated our
deed restrictions. The City and County
immediately helped address the issue,
and a revised house plan, in keeping with
the deed restrictions, was built instead.

The WCC attended the TCEQ hearing
regarding the air permit for the Martin
Marietta concrete crushing facility and
made public comment, both orally and in
writing.

Major Street Repair

Many streets in Houston need repairs.
Instead of replacing an entire street, a
new strategy is to replace individual
panels. Hillcroft recently had almost all
the panels replaced on both sides
between Willowbend and W. Bellfort.

Traffic and Speeding

Speeding continues to be a major
problem on Westbury streets. There was
another fatality on W. Bellfort this year as
well as other major accidents. The City is
working collaboratively with the
neighborhood on solutions for both Wil-
lowbend and W. Bellfort. The Willowbend
Traffic Study held a public meeting to get
input. See page 14 for more info. The
WCC has requested a traffic light on
W. Bellfort at Burdine.

Flooding & Drainage

The WCC has devoted much effort into
understanding the causes of flooding in
Westbury and advocating for real help.
Phase 1 of the Westbury Storm Drain
Reconstruction project will start construc-
tion in 2024. The WCC advocates for
flood control relief from all levels, the

All About Trash

Special Edition

HEAVY TRASH Explained!

The City of Houston provides residents with FREE monthly heavy trash collection at the curb. The City alternates "TREE WASTE" collection months with "JUNK WASTE" collection months. The collection cycle is the same every year, as shown below.

ALL of Westbury is picked up on the 2nd Thursday of each month.

Heavy Trash can be placed on the curb starting the Saturday before the scheduled collection date. Do not place heavy trash on the curb early. Not only is it a violation of city ordinance but it is ugly and no one wants to look at their neighbor's trash for weeks on end.

TREE WASTE	JUNK WASTE
January	February
March	April
May	June
July	August
September	October
November	December

What is "Junk Waste"?

"Junk Waste" includes furniture, appliances, lumber, fencing, and other bulky items (including tree waste, but the tree waste would then be sent to landfill rather than mulched).

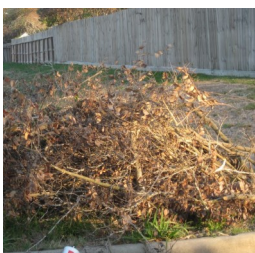
The city will NOT collect bagged yard waste placed in improper bags during a Junk Waste month.



What is "Tree Waste"?

"Tree Waste" consists of tree limbs, shrubbery limbs, or branches of trees and shrubs. If the Tree Waste has other types of materials mixed in with it, then it is no longer Tree Waste.

Lumber, fencing and similar materials are NOT considered Tree Waste. During a Tree Waste month, only Tree Waste materials will be collected.



What is "Yard Waste"?

"Yard Waste" consists of leaves, grass clippings, small yard trimmings or branches. **Yard Waste must be in a city-approved bag**, or small branches bundled (tied) into a pile less than 4 feet long, less than 18 inches in diameter, and less than 50 pounds in weight. "Yard Waste" is picked up sporadically and not on a schedule. **Call 311 if you have yard waste waiting on your curb.**



Westbury Trash Dates *

Every Thursday is regular trash pick-up in the black rolling can

Every Thursday is yard waste pick-up, only collected if bag correctly (see below)*

Every other Thursday is recycling in the green rolling can*

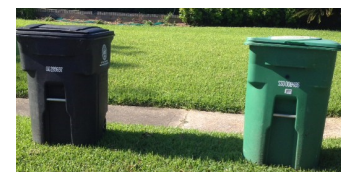
2nd Thursday of every month is Heavy Trash. Odd months are TREE WASTE ONLY and even months are JUNK WASTE

**Recycling and Yard Waste are often not collected when the City says. The above is the official schedule. Recycling is typically collected on Saturday. Yard Waste collection is sporadic at best.*

Trash Can Placement

Household garbage must be put inside the city-provided container which should be placed at the curb between 6PM Wednesday evening and 7AM Thursday morning. Do NOT place trash cans in the street. The container must be accessible to the automated collection truck and not blocked by obstacles, including parked cars. Homeowners with multiple trashcans MUST place trashcans three feet apart. Do not place cans next to light poles or trees. Trash cans must be removed from the curb by 10PM Thursday.

TRASH CAN PLACEMENT EXAMPLES



Green Recycling Can

The green can is for recyclables such as steel or aluminum cans. Paper. Certain plastics, not # 6. Glass IS allowed in the green recycling cans. **Plastic grocery bags and trash bags are NOT allowed in the green recycling cans.** Plastic bags get tangled in the machinery and cause big delays for recycling facilities. Do not bag your items. Recycling is picked up every other Thursday. Recycling collection is often delayed until Friday or Saturday. The WCC recommends still following the City's published schedule as every once in awhile, the trucks show up on the scheduled date.

Black Household Trash Can

Household garbage such as personal trash and food waste are to be placed in the large black rolling trash bins. Household garbage day is EVERY Thursday. No yard waste, dead animals, household hazardous waste, or electronics are allowed. Do not overfill your black can, the lid must be able to fully shut or the driver can skip your home. (The WCC had reports of this happening recently in Westbury 2).

Too Much Trash this Week?

Buy "tags for bags" from Fiesta, HEB and participating Kroger stores to get your tags for your extra bags of trash picked up. Cost is \$2 per tag, plus tax.

TRASH PROBLEMS

Broken or Missing Trash or Recycling Can

Please report to the City of Houston via 311. The City will provide you a Service Number (SR) to track your request. Once you have reported your broken or missing can, call the WCC office to help expedite the request. Typically the City allows for 2 weeks for this type of request. If your request is past due, please contact the WCC office. We can typically get a better response via our Solid Waste contact.

Late/Skipped Pick-Up

Leave the trash at the curb. Report to 311. Trash collection has been very challenged since Harvey. The delays are due to old trucks and lack of drivers. Please be patient with the City but if your trash is not picked up on the scheduled day, please report to 311 and leave it on the curb.

Environmental Service Center South— 11500 S. Post Oak Between Gasmer and South Main

➔ Recycle and Household Hazardous Waste

Various household hazardous waste is accepted such as anti-freeze, fuel, oil, paint, paint thinner, pesticides, herbicides and household cleaners. Residential electronic scrap items will also be accepted (monitors, televisions, printers, keyboards, mice, scanners, fax machines, telephone handsets, VCRs, CPUs, cellular phones and other small consumer electronics). These items should not be placed on the curb with or in your container for collection with garbage or heavy trash pick-up. **The center is open every Tues. and Wed. from 9AM to 3PM and the 2nd Saturday of the month from 9 AM- 1 PM.**



Items that can be taken to the Environmental Service Center

➔ Reuse Chemical Take Away (FREE)

The City of Houston's Environmental Service Center South offers free paint and household chemicals. Located at **11500 South Post Oak Road**, the Center is open for reuse chemical distribution on **Fridays from 9AM to Noon**. First come, first served.

➔ ReStore (Craft Items, Books, Post Consumer & Industrial Scrap - FREE)

The ReStore, which acts as a book swap, recycling info library, as well as a repository for craft items and post consumer and post industrial scrap (useful for art projects). Located at **11500 South Post Oak**, items can be taken away from **9AM - Noon every Friday** during the Reuse Chemical Take-Away.



RECYCLE OFTEN.
RECYCLE RIGHT.™

HTX Collects App

Houston Solid Waste Management Department has launched HTX Collects, a mobile app that will allow residents to stay better connected to the City's waste and recycling collection programs.

The app is available for Androids and iPhones. Insert your address, set reminders and never forget when trash day is! The app will send notifications to your phone to remind you when to recycle trash, regular trash and even heavy trash.

CHRISTMAS TREE RECYCLING

The City of Houston will pick up Christmas trees from the curb in January on Heavy Trash Tree Waste Day, Thursday, January 17. The trees must have all decorations, ornaments, tinsel, lights and stands removed. Flocked trees cannot be recycled.

Christmas trees may also be dropped off at the Southwest Neighborhood depository thru January 26.



All About Trash

Special Edition

Southwest Neighborhood Depository & Recycling Center (for Heavy Trash Drop-off) 10785 Southwest Frwy

Open Tuesday - Sunday, 9AM to 6PM

This facility accepts Junk Waste, Tree Waste and Recyclables at no additional charge to City of Houston residents. Citizens may use the depositories four times per month. You must provide a Texas Driver's License or ID and a current utility bill or city property tax receipt. **The depositories will also accept the following items:** Furniture, Tree limbs, Stoves, Refrigerators, etc., 10 auto tires (Rims Not Accepted)

Westpark Recycling Center 5900 Westpark

Open Monday– Saturday from 8AM to 5PM

This facility is a drive through operation so you do not have to unload your vehicle.

The center accepts: aluminum and tin cans, oil filters, used tires, computers, #1-7 plastic containers, GLASS bottles and jars, telephone books, office paper, cardboard, magazines, and used motor oil. Newspapers placed in a brown bag will also be accepted.

Reuse Warehouse 9003 N. Main St.

Open Tuesday thru Friday from 8:30AM to 4:30PM and every 2nd and 4th Saturday of the month from 8:30AM to 4:30PM

The facility accepts material from individuals, supply companies, and builders, and makes it freely available for reuse by any non-profit organization.

Trash Violations

Violation of any provision of the solid waste ordinance is punishable upon first conviction by a fine of no less than \$50 nor more than \$2,000. Each subsequent conviction is punishable by a fine of no less than \$250 nor more than \$2,000. Each day that any violation continues may be punishable as a separate offense. **To report a violation or to file a complaint, call 311.** Solid Waste Management Department Supervisors can write citations.

The most common trash violations are:

- ◆ Placing heavy trash out too early
- ◆ Placing the incorrect heavy trash type at the curb (junk vs tree)
- ◆ Placing incorrect items in the regular and recycling cans
- ◆ Using the incorrect bags for yard waste

NEW Westbury Library

On a beautiful crisp sunny Saturday, December 16, a ceremony was held to preview the new Shannon Walker Neighborhood Library in Westbury. It was a wonderful celebration that brought over 400 residents together to see the progress on the library that is expected to open in mid-February.

Dr. Rhea Lawson opened the program and thanked Mayor Turner for his commitment to libraries as three new libraries were being previewed that morning. The Mayor spoke and introduced our District K Councilmember Martha Castex-Tatum. She led the charge to make this a true neighborhood destination and engaged residents to tour other libraries and come up with what our community wanted in a library. And we got it all!

The new 23,000 square foot library includes:

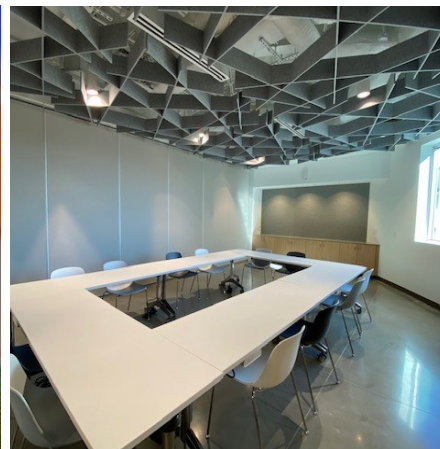
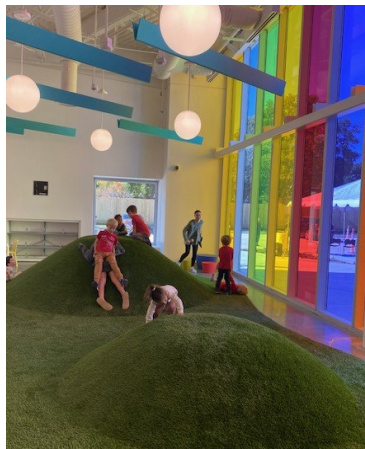
- ✦ passport office
- ✦ tech link space with a green room, a recording studio with separate engineering room, and a podcast room
- ✦ modular community meeting room
- ✦ children’s area with small indoor play area
- ✦ teen area
- ✦ adult space
- ✦ small study rooms
- ✦ coffee shop
- ✦ BOOKS!!!

The naming committee came to the podium and Becky Edmondson thanked Mayor Turner for the last 8 years and presented him with some Westbury area gifts: a Willow Waterhole hat, a Westbury Community garden t-shirt, and a Westbury coffee mug.

Dr. Vanessa Wyche, head of the Johnson Space Center, brought greetings from NASA and the eponymous Shannon Walker appeared on a video talking about her experiences at the Meyer library when she was a student at Parker and how libraries open up the entire world and beyond. She grew up in Westbury and attended Parker Elementary, Johnston Middle School (now Meyerland Middle School for the Performing and Visual Arts) and Westbury High School before going on to Rice University. She is the first native Houstonian astronaut!

The staff of the new library was introduced and librarian Felicia Briscoe is so looking forward to meeting all of you and having the library become OUR library.

There is a Facebook Live video filmed by Jennifer Edmondson on the Westbury Houston page if you would like to see the interior of the library.



Who Represents Westbury?

Each home in Westbury is represented by a District Councilmember and all of the five At-Large Councilmembers.

Below is the list of the 2023 election winners who will represent us in Westbury. Most of Westbury is represented and located in District K. Only the homes on the north side of Willowbend are in District C. We look forward to working with the new City Council and Mayor.

- Mayor – John Whitmire**
- District C – Abbie Kamin**
- District K – Martha Castex-Tatum**
- At-Large 1 – Julian Ramirez**
- At-Large 2 – Willie Davis**
- At-Large 3 – Twila Carter**
- At-Large 4 – Letitia Plummer**
- At-Large 5 – Sallie Alcorn**

2023 ELECTION RESULTS

The 2023 elections are over and Houston is under new management with a new Mayor and new City Councilmembers. Thank you to the many Westbury voters who took the time to vote. Approximately 198,000 people voted in the Harris County December runoff election. That's just 16.9% of Houston's 1,172,118 registered voters.

Westbury historically votes at much higher percentages than the rest of the City, and this year was no exception. The top precincts were in District G this year, driven by the hotly contested Huffman/Buzbee runoff, with 4 precincts having over 40% participation.

Four of the precincts that include Westbury homes voted in the 30 to 39% range: Precincts 403, 281, 14, and 146. Westbury would likely have had even higher voting participation this year except the race for District K City Council representative had no competition running against incumbent Martha Castex-Tatum.

Our Westbury area precincts are consistently in the top 10% in the city for highest voting percentages. The people who represent us need to know us and to know that we vote. Several newly elected city officials attended WCC meetings in 2023 or sent representatives: John Whitmire, Twila Carter, Julian Ramirez, Letitia Plummer, Sallie Alcorn, and Martha Castex-Tatum.

Pct.	Voting locations	Registered Voters	Ballots Cast	Turn Out
403	Westbury Baptist	1,809	660	36.48%
281	Godwin	2,516	865	34.38%
14	Parker ES	1,996	628	31.46%
146	Platou	2,086	640	30.68%
293	Anderson ES	1,488	422	28.36%
291	Disciples Methodist	1,239	278	22.44%
453	Westbury High	1,270	202	15.91%
ALL	City of Houston	1,172,118	198,312	16.92%



"NEIGHBORHOOD SPECIALISTS"

JACKIE AND KENDYL TEAM



JACKIE MURRAY
(713) 825-9179



KENDYL MAURER
(281) 904-8199



10602 Cedarhurst - 4/3/2•\$570's 5730 Hummingbird - 4/2/2•\$460's



5510 Briarbend - 3/2/2•\$340's



10926 Endicott - 3/2/2•\$360's



5819 Portal- 5/3/2•\$550's



11022 Braewick - 3/2/2•\$320's



Westbury/Parkwest Realtors over 40 years!
Selling? **SOLD** when you list with us!

JackieKendylTeam@WayneMurray.net



The Murray Group
(713) 728-2300



HOUSTON • KATY • SUGAR LAND • THE WOODLANDS

Protect the Constable Program

Letter to Pct. 4 Commissioner Briones from WCC President Cindy Chapman about the Harris County Constable Program and the response from the Commissioner's office. Note— The County removed this topic from the December 2023 agenda.

Dear Commissioner Briones,

My name is Cindy Chapman and I am President of the Westbury Civic Club (WCC). Westbury has about 5,000 homes in southwest Houston, located in Precinct One and Precinct Four. (I live in Precinct Four.) Harris County Commissioner's Court is proposing to significantly increase the cost of the Constable program by 14% next year and to require any new positions to be billed at 100% instead of our current 80/20 cost sharing.

We cannot afford these costs. Most of our homes have VOLUNTARY DUES (and those few homes with mandatory dues limit the increase to the rate of inflation). If we end up having to cancel our Constable patrol program due to cost, how does that improve public safety in Harris County? I implore you to not take these drastic steps making the Constable Program significantly more expensive. I am also concerned that Commissioner's Court has attempted in the past to cancel the Constable neighborhood cost-sharing program entirely. I regret that I am not able to attend the December 5 meeting of Commissioner's Court, or I would be there in person to express my serious concerns on this topic.

Westbury has participated in the Precinct 5 Constable Program since 1980. We already had to drop one of our four paid Constable positions due to income problems from COVID. Would we be expected to pay 100% if we ever manage to raise sufficient funds to restore that 4th position? We have already drained all the security patrol reserves we had accumulated over many years for our security patrol. We have even dipped into our regular reserves to pay for our Constable Program, because we feel that Public Safety is the most important consideration for our residents. Unlike areas with mandatory assessments, we cannot easily pass on these additional costs. With voluntary dues, we have to scramble every year to get the dollars needed to pay for our Constable program.

Westbury is a diverse, middle-class neighborhood. Our streets are public streets, including major thoroughfares such as West Bellfort, Hillcroft, and Chimney Rock - which serve thousands of drivers every day. The Westbury area hosts amenities that draw people from across the area. County Commissioner Ellis is spending millions of dollars for trails at the Willow Waterhole Greenway, which has been identified as a low-income area. The city is building the Dr. Shannon Walker Library in Westbury, which is intended to replace the West Orem, Meyer, and Frank libraries in southwest Houston.

Since we are located in the Houston city limits, we do not receive services from the Harris County Sheriff's office, even though we pay taxes to Harris County. We are served by the Houston Police Department, which is seriously understaffed. The Constable program helps take some of the burden off of the Houston Police Department, so that HPD can devote resources elsewhere.

Just last week an 86-year-old Westbury woman was thrown to the ground and robbed of her purse after she was followed home. Luckily, she had minor injuries, and her family called the Westbury constable patrol to handle the incident response. A few years ago, there was a group of teens who were robbing Westbury senior citizens in their yards (including beating one man with his own cane), and it was the Constables who eventually managed to trace the teens to a convenience store where they could then be identified.

Mental health is increasingly getting attention. Our neighborhood is about 70 years old so we have many elderly residents or their adult children who have issues, plus the mental health issues generally found in a major urban area. Last month, someone in a mental health crisis started firing a gun multiple times here in Westbury. Luckily no one was injured, and it was a Precinct 5 Constable who was the first responder to the situation. We have had several cases where persons with dementia have wandered off and gotten lost, and the Constables quickly respond with patrols trying to find the lost person. A few years ago, a passerby flagged down one of our Westbury constable officers after seeing an incoherent man in bloody clothes holding a bloody knife along a public street (just a few blocks from an elementary school). Our Constable was the first responder to the scene and it turned out the man had just stabbed members of his family (the family members recovered okay). The fast response by the Constable may have saved lives.

The Westbury community has greatly benefited from the Precinct 5 Constable Program for over 40 years in a cost-sharing arrangement. We are not getting the program for free. We are paying 80% of the cost, and this arrangement benefits both us and the general public by freeing up the Houston Police Department for other needs. Please do not price us out of this program.

Cindy Chapman
Westbury Civic Club President

Good afternoon Cindy,

On behalf of Commissioner Briones, I would like to thank you for sharing your heartfelt thoughts about the contract deputy program and the concerns you have raised in your email. Please know that as someone who has been the victim of crime several times, being a mom to three young daughters and a former teacher to students who have also experienced crime, public safety is the Commissioner's top priority.

Team members from Policy & Innovation, as well as Community Engagement & Government Affairs (copied in this email), will continue supporting Commissioner Briones' commitment of working with our Constables and finding longer term solutions to the contract deputy program.

Thank you, always, for your service as the President of the Westbury Civic Club, and I am grateful to continue working with you.

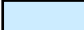

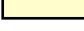




Sincerely,
Alice Lee, Chief of Staff

Crime Statistics for Westbury SuperNeighborhood

November 16– December 15, 2023
Crime in Westbury Single Family Homes

KEY

Block	Street	Crime	Date	Time	Section of W
12400	Atwell	Simple Assault	12/4	5pm	Westbury South
5800	Burlinghall	Theft from Motor Vehicle	12/4	12pm	Westbury 3
10700	Chimney Rock	Auto Theft	12/3	12pm	Westbury 2
11100	Dunlap	Simple Assault	12/5	12am	Westbury 5
5700	Ettrick	Driving Under the Influence	11/25	10am	Westbury 4
5900	Ettrick	Aggravated Assault	11/18	10pm	Westbury 4
6000	Warm Springs	Destruction, Vandalism, Damage	11/25	2am	Parkwest 3
5800	W. Airport	Theft from Building	11/22	12pm	Westbury 4
6000	Willowbend	Burglary, Breaking & Entering	12/9	5pm	Westbury 5

	Theft from Motor Vehicle
	Auto Theft
	Vandalism
	Aggravated Assault
	Burglary
	Simple Assault
	Theft—other

The crimes listed took place between November 16 and December 15. They are in alphabetical order by street. The crimes are highlighted by type. Please see key above.

Crime by the Numbers

Crime Type	Homes	Apts./TH	Comm./Business	Park/Public
Aggravated Assault	1	7	0	0
Theft from Motor Vehicle	1	2	2	1
Burglary	1	2	1	0
Robbery	0	1	1	0
Simple Assault	2	15	2	1
Shoplifting	0	0	8	0
Drugs, Narcotics	0	1	0	0
Vandalism, Damage	1	2	5	2
Auto Theft	1	1	1	0
Theft of Vehicle Parts	0	0	0	0
Theft—Other	0	2	1	0
Theft from Building	1	0	0	0
Purse Snatching—Theft	0	0	1	0
DUI	1	0	0	0
Disorderly Conduct	0	1	0	0
Sexual Assault	0	0	0	0
Obscene Material	0	0	0	0
TOTAL	9	34	22	4

Pct. 5 Constable Dispatch Westbury Area Patrol

281-463-6666

SW HPD Station

832-394-0400

HPD Non-Emergency

713-884-3131

VACATION WATCH



Are you going on vacation over the winter break? If you pay your Westbury Area Patrol dues, make sure you request a vacation watch by the Constables. Vacation Watch is a great service that is included in our contract.

A deputy will check out your property at least once a day to make sure it is secured and no suspicious activity.

You can register for a vacation watch online at <https://constablepct5.com> or call 281-463-6666

Traffic Stops in Westbury

Pct. 5 is actively using radar and stopping speeders in the hopes of slowing down traffic on W. Bellfort and Willowbend. This has had an added benefit of often taking criminals off the street. Here are a few examples of what the deputies find when they make a traffic stop.

12/08 Willowbend/Chimney Rock — Deputy observed a vehicle stranded at Willowbend/Chimney Rock. A small amount of Methamphetamine was located in the vehicle. The Suspect was arrested and charged with PCS.

12/10 5800 W Bellfort — Deputy observed a vehicle driving on the road with two flats. The vehicle was pulled over and the driver showed apparent signs of intoxication. After failing the field sobriety test, the Suspect was arrested and taken to jail where he gave a breath sample which resulted in a BAC level at over two times the legal limit of alcohol. Suspect was charged with DWI and booked into the jail.

12/24 5700 W Bellfort — Deputy made a traffic stop on a vehicle. The driver had 10 open warrants for his arrest. Subject was booked into Harris County Jail.

12/30 5400 W Bellfort — Deputy made a traffic stop on a vehicle. The driver was intoxicated. The passenger was in possession of marijuana. Both subjects were arrested. 1 for DWI, and the other for possession of marijuana.

Good News for Homeowners — Lower Tax Bill

With costs for everything on the rise, it was really nice to see the property tax relief bill pass in November. All Westbury residents with at least a homestead exemption will see their tax bill drop. The Texas Constitution was amended to lower school district property tax rates and to raise the homestead exemption.

The homestead exemption for school property taxes was raised from \$40,000 to \$100,000. Homeowners over 65 will get a larger tax break.

For those of you whose appraised value for tax purposes were frozen when you turned 65 and have continued to live in the home for many years will see the biggest savings. One older Westbury owner saw their taxes go from \$866 to \$72.

For Westbury’s owners under the age of 65 and those who bought when house values were higher will also see tax relief. With the residential homestead exemption raised from \$40,000 to \$100,000, even with the normal 10% increase in value that Harris County can do on homes, you will still see a drop in your tax bill. Spot checking homes across Westbury we found property tax bills dropping by an average of \$400.

For homes with lower appraised values, there are also savings. One home with a homestead exemption and a value of \$172,194, saw their tax bill go from \$3,446 last year to \$1,911.

For those without a homestead exemption status, there is not relief on this year’s tax bill. But next year there is a new provision that the values cannot be raised more than 20%.

Homeowners should doublecheck to make sure you are receiving all the exemptions in which you are entitled: Homestead, Over 65, and Disabled. Visit hcad.org for more information.

WILLOWBEND/W. BELLFORT CONNECTIVITY STUDY

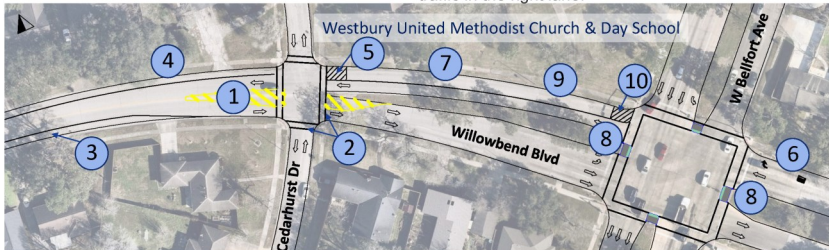
After receiving many complaints from the WCC and Westbury residents, District K City Councilmember, Martha Castex-Tatum, sponsored a study on Willowbend between S. Post Oak and Hillcroft. The Willowbend/W. Belfort Connectivity Study addresses gaps that limit access to key destinations. The study was led by the Planning & Development Department. Throughout the public engagement process, residents identified areas where drivers are known to speed, intersections where traffic backs up, and locations that are difficult to navigate for pedestrians and cyclists. Findings from a walk-through exercise at 11 locations were presented to residents during the WCC board meeting on August 16, 2023.

Community members helped prioritize the recommendations. The proposed recommendations will be implemented in phases based on that prioritization and available funding.

Based on the community feedback, VMPT Castex-Tatum committed funding for the top-scored project at Willowbend and W. Belfort. Following implementation of the project, City staff will conduct analysis and survey the community to determine effectiveness. City staff will continue to track other funding opportunities for remaining locations in the study, as well as investigate W. Belfort at Burdine Street following a recent fatality.

Willowbend Blvd from Cedarhurst Dr to W Belfort Ave

Design Recommendations for Cedarhurst	Design Recommendations for W Belfort
1) Expand median with yellow pavement markings	6) Change WB Willowbend right-turn lane to be right-turn only
2) Stripe crosswalk and add signage	7) Change 2nd lane of WB Willowbend west of W. Belfort to parking
3) Add striped lane edge line	8) Add pedestrian refuges
4) Add curve warning signage	9) Move near-side WB Metro Route 10 bus stop to far-side
5) Add striped bulb out at the NE corner	10) Add striped bulb out at the NW corner to prevent through traffic in the right lane.



Online Holiday Decoration Contest Winners



Westbury Award Winner
11407 Landsdowne



The Shining Winner
5723 Portal



Overly Inflated Winner
5818 Bankside

Interactive Wonderland Winner 11611 Mullins

Thank you to all the homes that participated in the online contest! The online contest will be back next year. Winners received an ornament with a picture of their home and award name.

Willow Waterhole

More than Just Flood Control

TRAILS * BIRDS * WILDFLOWERS



Photo—Mark Mulligan, Houston Chronicle

Visit the Willow Waterhole TODAY! The main Westbury Lake trails and gazebo are easily accessible via the new parking lot at the end of Dryad near Westbury High School.

Updated METRO Bus Stop

How Communities Work Together for the Greater Good

About 8 years ago METRO slated the bus route on South Willow for closure. This bus stop serves the Gathering Place, now the Menninger Clinic, clients and employees as well as those from the nearby nursing home, Westbury Place. The Westbury Civic Club and Super Neighborhood lobbied successfully to keep the route and the bus stop. Then the Willow Waterhole Greenspace Conservancy stepped in to ask for a bus shelter and used grant monies for a new sidewalk as part of their accessibility projects.



On December 19, METRO came out for the ribbon cutting of what was the 5,000th bus stop improvement.

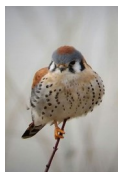
Big Donation for Willow Waterhole

Huge thank you to Westbury resident, Katy Shullenberger, who nominated the Willow Waterhole for her company's annual donation to a local non-profit. Many thanks to DraftKings for their initiative to give back to the communities where they live and work. DraftKings donated \$10,000 to the Willow Waterhole.



Audubon Society Monthly Bird Survey @ the Willow Waterhole

Saturday, January 20, 7AM
Meet at the Gathering Place, 5310 S. Willow
For more info., visit houstonaudubon.org/




WESTBURY COMMUNITY GARDEN
12581 DUNLAP



WHERE IS THE GARDEN?

12581 Dunlap (77035) is off Hillcroft between W. Airport and South Main. Heading south on Hillcroft, turn right onto Greencraig, follow it around the bend where it turns into Dunlap. The large blue roof on the WCG Pavilion is readily visible.
Street parking.

JOIN THE GARDEN TODAY!

If you're tired of buying vegetables that spoil in your fridge, why not grow them with a group in a shared bed at your local Westbury Community Garden! Harvest only what you need, when you need it, from a few blocks away!

Fresh, organic food fostered by your hands is a great way to elevate your physical and mental health in the new year. It's also a fantastic creative energy outlet for people that thrive in the outdoors working with their hands.

If that's you, or someone you know, please apply today! For less than \$10 a month you or a group of loved ones could tend to an open garden bed, growing your own food in the new year.

Check into membership benefits and commitments.
Contact: membership@westburycommunitygarden.org

ACTION ELECTRIC CO.

Specializing in

- Electrical Repairs
- Power Outages
- Breakers/Panel Repair & Replace
- Overhead/Underground Power Lines/Meter Jaw
- Install Car Charger & Generator

24/7 & FREE ESTIMATES

Tom Cao
713-392-5795

Master Electrician
Lic #6260

**SUPPORT THE WESTBURY CIVIC CLUB
PAY YOUR 2024 DUES TODAY!**



Activate your online owner account to pay your dues or assessments.

BROCK *and*
FOSTER
> Real Estate

**RING IN THE NEW YEAR
WITH YOUR DREAM HOME**



EXPLORE THE BEST REAL ESTATE OPTIONS IN TOWN WITH US
AND START 2024 IN YOUR DREAM HOME.

BROCKANDFOSTER.COM

PEROT PLUMBING

Repair & Remodel Experts

Sewers & Drains • Water Lines • Water Heaters
Kitchen & Bathroom Plumbing • Gas Lines / Testing
Home Generators • Reroutes / Tunneling • Camera Inspection
Walk-In Bathtubs Installed • Senior Discounts • Permits

FREE Estimates

CALL CHRIS

Insured

**Master
License
17909**



713-667-7500



**30 Years Serving Bellaire, West University, SW Houston
MENTION THIS AD AND RECEIVE \$20 OFF ANY SERVICE**

