



Westbury Crier

VOLUME 66, ISSUE 1

JANUARY 2021

Support the Westbury Civic Club Pay Your 2021 Dues TODAY!

2020 was a very challenging year on many levels. COVID has brought many changes to our lives. The Westbury Civic Club really appreciates all the residents who were able to contribute in 2020 to the WCC and Westbury Area Patrol. Thanks to your contributions, the Westbury Civic Club has continued to operate during these challenging times.

Westbury would be a very different neighborhood if it weren't for our strong civic club and volunteers advocating on behalf of the neighborhood, enforcing deed restrictions, and beautifying the public areas. This is so important to Westbury's future. Read about the Civic Club's accomplishments in 2020 on pages 8 and 9. The Westbury Civic Club cannot function without YOU!

The WCC Membership Dues are just \$60 per year.

Your Westbury Civic Club dues pay for office space, utilities, insurance and an office manager who fields a wide range of WCC tasks including providing support for residents, organizing special events and projects, assisting the WCC board, and producing the monthly Crier. The dues also beautify our esplanades and maintain subdivision markers.

Contribute \$300 Towards the Westbury Area Patrol.

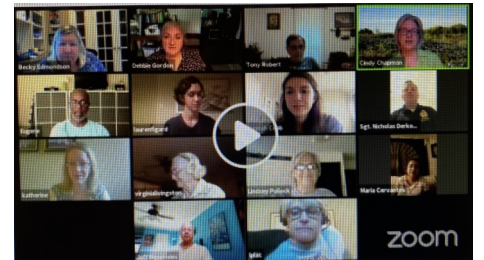
The Westbury Area Patrol (WAP) puts certified police officers in our neighborhood and on our streets. Their visibility (even if you think you do not see them, the criminals know they are around) coupled with their quick response time makes them an invaluable component of neighborhood safety. We ask that each household contribute \$300 towards the WAP program.

Please pay TODAY! The Dues Form is on page 7.

We need EVERYONE to pay their dues. We believe that the combines dues of \$360 (just less than a dollar a day) provide a worthwhile service that protects the value of your home and the safety of your family. Working together, we really can make a difference.



WCC Open House event in February 2020



WCC Board meeting re-imagined on Zoom



WCC Constable fundraiser event 2020

| IN THIS ISSUE: | |
|-----------------------------|-------|
| Map of Westbury | 4 |
| Event/Trash Calendars | 5 |
| Get Involved | 6 |
| 2021 Dues / Resident Portal | 7 |
| 2020 Highlights | 8-9 |
| Trash Feature | 10-11 |
| Westbury News | 12 |
| Crime/Security | 13 |
| Holiday Yard of the Month | 15 |
| TCEQ Hearing | 16 |
| Westbury Community Garden | 17 |
| Willow Waterhole | 18-19 |



SPECIAL TRASH FEATURE ON PAGES 10 & 11

- ⇒ What is the difference between Junk Waste, Tree Waste, and Yard Waste?
- ⇒ Where are the City's recycling centers?
- ⇒ When is heavy trash pick up?



HEAVY TRASH

January 2021
Thursday, January 14
TREE WASTE ONLY

February 2021
Thursday, February 11
JUNK WASTE

RECYCLING

January 2021
Thursday, January 14
Thursday, January 28

February 2021
Thursday, February 11
Thursday, February 25

IMPORTANT CONTACTS

WCC OFFICE

5322 W. Bellfort #100, Houston, TX 77035
Jennifer Edmondson.....WCC Office Manager
NOTARY SERVICES are NOT available at this time.

*****The office is CLOSED to the public. NO visitors.**

CONTACT US

WCC Office Telephone.....713-723-5437
WCC Office Email.....westburycc@sbcglobal.net
Deed Restrictions.....westburycc@sbcglobal.net
WCC President.....wccpresident@westburycrier.com

Visit our website at www.westburycrier.com
“Like” us on Facebook at Westbury Houston

SECURITY

Pct. 5 Constables (WAP).....281-463-6666
Report property crimes, suspicious activity, and vacation watch
Emergency.....911
Houston Police Dept. Non-Emergency..... 713-884-3131
Southwest HPD Station832-394-0400

CITY OF HOUSTON

District K CM, Martha Castex-Tatum.....832-393-3016
District C Council Member, Abbie Kamin.....832-393-3004
Deed Restriction Enforcement (City Legal).....832-393-6333
Platou Community Center.....713-726-7107
Mayor’s Citizen Assistance Office.....832-393-0955
Houston Help & Information.....311
*For missed garbage pickup, water line breaks, potholes
sewer repairs, dead animals, traffic signals, heavy trash
violations, neighborhood nuisances, and other city services*

CENTERPOINT ENERGY

Electric outage.....713-207-2222
Suspected natural gas leak.....713-659-2111
Street light repairs.....713-207-2222
Make sure to give pole number

OTHER IMPORTANT CONTACTS

County Commissioner Rodney Ellis.....713-755-6111
Graffiti.....www.braysoaksmd.org
Shopping Cart Removal.....www.braysoaksmd.org
Brays Oaks Mgmt. District - Use “report a problem” link
Poison Control.....1-800-764-7661
Harris County Tax office.....713-368-2000
Harris County Appraisal District.....713-957-7800

2021 WCC BOARD OF DIRECTORS

Contact the Westbury Civic Club at 713-723-5437 or
westburycc@sbcglobal.net.

EXECUTIVE BOARD

President.....Cindy Chapman
wccpresident@westburycrier.com
Vice President.....Marcia Hartman
Secretary.....Katherine Wingfield
Treasurer.....Becky Edmondson

DIRECTORS AT LARGE

Communications.....Lauren Figard
Community Relations.....Tony Robert
Deed Restrictions..... Ray Mora
Flood Control & Infrastructure.....Jennifer Edmondson
Greenspace Beautification.....Mat Funk
Membership.....Susan Brock
Security.....Maria Cervantes
Volunteer Coordinator.....**VACANT**

SECTION DIRECTORS

Westbury 1.....VACANT
Westbury 2.....Lindsey Pollock
Westbury 3.....Jeff Benavides
Westbury 3.....Jonathan Hansen
Westbury 4.....Eugene Sirls
Westbury 4.....VACANT
Westbury 5.....Kent Perschke
Westbury 5.....Donna Strom
Westbury South.....Brandon Richard
Parkwest 1..... Angie Furnari
Parkwest 2.....Jeffrey Weiss
Parkwest 3.....Lisa Placke

NEWSLETTER INFORMATION

Published by.....Westbury Civic Club, Inc.
Editor-In-Chief..... Jennifer Edmondson
Edited by.....WCC Publication Committee
Advertising..... 713-723-5437/ westburycc@sbcglobal.net

Ad Disclaimer: *The WCC neither represents nor endorses an advertisement in the newsletter. Perform your own due diligence before contacting any advertiser.*



Westbury Civic Club , Inc.

A Message from the Westbury Civic Club President

Happy New Year! The stressful and challenging year of 2020 is finally over. I hope that this incoming year of 2021 brings you much joy, happiness, good health, and prosperity.

As we go to print, the first COVID vaccinations are being administered to healthcare workers and millions of doses will be soon be available in the upcoming months for the rest of us. In football terms, we are getting closer to the goal line, but we haven't crossed over to win the game yet. Let's stay focused, continue to watch out for our own health and the health of those we love, and help take care of our neighbors and community.

December was brightened by a multitude of holiday decorations and lights. Who knew there were so many different types of inflatable holiday yard decorations? In addition to the traditional Holiday Yard of the Month awards, selected by our team of Yard of Month judges, this year the WCC created a new online holiday decoration contest with 6 new fun categories. Voting was done online on the Westbury Houston Facebook page. Enjoy seeing some of the holiday decorations in Westbury on pg 15.

A December highlight was a piece of public art being delivered to the Westbury Community Garden – a giant cabbage! The WCG was selected as a perfect site. If you have never visited the garden, then this will give you a good opportunity to drop by for a visit. Read more on page 17.

Every January, the Westbury Crier has a special trash feature explaining everything you need to know about trash pick up in the City of Houston. Check out pages 10-11. Save them out for future reference.

This edition of the newsletter will feature WCC highlights from 2020. For example, the City has announced funding for several

drainage and flood mitigation projects for Westbury over the past several months. The City doesn't just decide to spend money on projects just because nice people live here in Westbury. The WCC has been advocating for years for real solutions for repetitive flooding problems. In 2014, the WCC provided more than 100 public input documents to the City from residents who had flooded. In 2015, Westbury was added to the 5+5 year plan for future storm drain reconstruction projects. In September of 2020, City Council approved funding for Sub-Project 1 of the Westbury Area Drainage and Paving Project, as part of a multi-year, multi-phased storm drain reconstruction project. In December of 2020, the City approved the purchase of the Spring Village | Apartments at 11810 Chimney Rock for future demolition (after the Houston Housing Authority relocates the residents) to create a 6-acre greenspace for additional floodwater detention. In 2021, the WCC will continue to advocate for flooding improvements. More detention and channel improvements are needed.

The Westbury Area Patrol by Precinct 5 Constables has been patrolling Westbury streets since 1984 with trained and licensed law enforcement officers. Your prompt contribution toward our paid security patrol is vital. In 2019, we made the difficult decision to decrease the number of constables from 4 to 3 due to lack of money received. The cost of the program that Westbury pays for the Constable security patrol increased in 2020 (by 4.9 percent) and it will increase again this year (this time by 5%). The quick response time and visible patrols on Westbury streets makes the Constable program an invaluable component of neighborhood safety.

In 2020, the Westbury Civic Club ran at a deficit and had to withdraw savings to pay our bills, despite taking steps to reduce spending. The deficit was about \$29,000. The security patrol service is the most expensive program provided by the WCC for our residents, so it is very important for 2021 that we raise sufficient funds for the patrol program and for other operations. The WCC board approved the recommendation of the Budget Committee to increase the total voluntary dues from \$335 to \$360. This is the first increase in FIVE years, since the dues were last raised in 2016! The cost is still less than a dollar a day. We think it is a reasonable investment to protect the value of your home.

The WCC is in the process of transitioning to a new software system designed for associations like our Westbury Civic Club. We have received feedback from our residents that they would like to have better options for communications and online payments. The new system will allow more payment options, including the ability to set up auto-pay scheduled payments. The new software will make it easier for you to contact us, and easier for us to track your requests or concerns, and has interactive tools. You will be receiving a letter from the WCC with additional information about how to set up and log into the new program. If you want to make a payment before then, you can mail a check or send a payment to us via PayPal to westburyc@sbcbglobal.net

Working together, we can continue to keep Westbury as the friendliest, best neighborhood around town. Tell your friends and co-workers that you live in Westbury and that you like living here.

Happy New Year! Let's make 2021 great!

Cindy Chapman

WCC Board Notes

- ➔ The WCC board did not meet in December.
- ➔ The next WCC board meeting will be on Wednesday, January 20 at 7PM via Zoom. The meeting will be streamed Live on Facebook.
- ➔ Vacant board positions—Section Director for Westbury 1 and Westbury 4, Director of Volunteers/Events. If you are interested in any of these positions, please email wccpresident@westburycrier.com.
- ➔ Follow us on Facebook at Westbury Houston

NEXT
Westbury Civic Club
Board Meeting
January 20 @ 7PM
Held via Zoom
Streamed LIVE on
Westbury Houston Facebook



Platou Community Center at Chimney Rock Park

11655 Chimney Rock Rd
713-726-7107

platou@houston.tx.gov



- ➔ **Supervisor: Ilea Balderston**
- ➔ **Assistant: Justin Thomas**
- ➔ **Weekly Classes/Groups CANCELLED**
- ➔ **Playground, Swings & Basketball courts CLOSED**

All activities, groups, and classes are cancelled at the Platou Center. The playground and basketball courts are CLOSED in accordance to the Stay Home, Work Safe order.



Please do not use the equipment.

Meyer Library News

➔ NEW Library Update

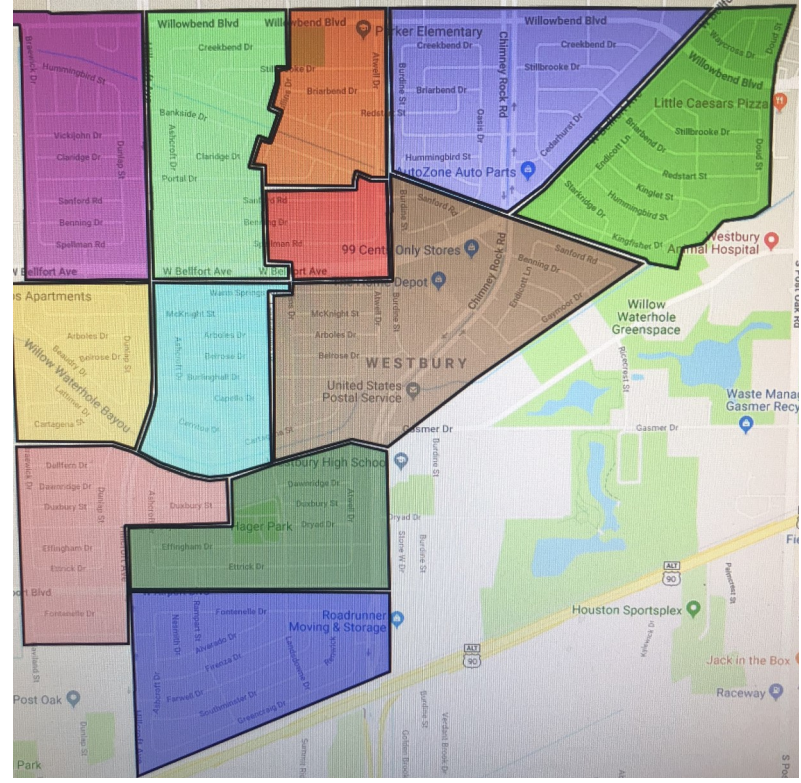
The City of Houston is forming a naming committee for the new library that will be located on Belrose. Check out District K CM Martha Castex-Tatum's newsletter for information on how to join.

Library Action Committee:

Thank you for your interest in this committee. It is full at this time. The committee will be meeting in January and will take part in the naming committee.



Map of Westbury by Section



Westbury is the 2nd largest neighborhood in the City of Houston with 5,000 homes. One reason Westbury has remained such a viable and desirable neighborhood is because of the very active Westbury Civic Club. The WCC has been advocating and working hard for the neighborhood for over 60 years. We often refer to different sections when talking about current or upcoming city projects, crime, or events. This handy map can also be found on our website, www.westburycrier.com.

| | | |
|--|----------------|-----------|
| | Parkwest 1 | 198 homes |
| | Parkwest 2 | 443 homes |
| | Parkwest 3 | 311 homes |
| | Westbury 1 | 543 homes |
| | Westbury 2 | 530 homes |
| | Westbury 3 | 853 homes |
| | Westbury 4 | 834 homes |
| | Westbury 5 | 501 homes |
| | Westbury 5 | 150 homes |
| | Westbury South | 563 homes |

Why hire one agent when you can have your own team?



Learn more at www.pfrteam.com,
or call us at (832) 297-9038.

Licensed Realtors Angela Furnari & Lonnie Parker
Over 15 Yrs Combined Experience - Westbury Residents 10 Yrs



CHAMPIONS RE GROUP Parker Family Realty Team is a TREC registered team of the Champions RE Group brokerage, supervised by Brokers Adriana & Ignacio Osorio.

What's Happening in Westbury

January 2021 Calendar Events/Meetings

| | |
|---------|------------------------------------------------------------------------------------------------------------------------------------------------------|
| Jan 1 | Happy New Year!! 2021 is here! |
| Jan 1-4 | WCC Office Closed |
| Sat 16 | Audubon Society Bird Survey To Be Determined |
| Mon 18 | WCC Office Closed - Martin Luther King Day |
| Mon 18 | Brays Bayou Association Meeting To Be Determined |
| Wed 20 | WAIC/Super Neighborhood #37 Meeting 9:30AM Held via Zoom Live streamed on Facebook, WAIC Houston |
| Wed 20 | Westbury Civic Club Board Meeting 7PM Held via Zoom Live streamed on Facebook, Westbury Houston |
| Sun 24 | Working on Westbury @ Willow Waterhole 2PM-4PM Westbury Lake—meet at the Schwartz Gazebo See pages 6 and 19 |
| Tues 26 | SW PIP Meeting To Be Determined |
| Feb 1 | 2021 Mandatory Assessments due for Parkwest 1 & 2 See page 6 |

All About Trash

Trash, yard waste, recycling, and heavy trash are picked up by the City of Houston.



Regular Household Trash

Pick-up is EVERY Thursday. Regular household trash goes into the black trash can.

Yard Waste

Pick-up is EVERY week either on Thursday or Saturday or any day the City decides to come by. Yard Waste MUST be placed in the correct City bio-degradable bags.



Recycling in Westbury

All of Westbury recycles on Schedule A. Recycling is every other week. Recycling goes into the green trash can.

| | |
|----------------------|-----------------------|
| January 2021 | February 2021 |
| Thursday, January 14 | Thursday, February 11 |
| Thursday, January 28 | Thursday, February 25 |

Heavy Trash Schedule

All of Westbury is on the same schedule for Heavy Trash. Pick-up is on the 2nd Thursday of every month. Odd months are TREE WASTE ONLY and even months are JUNK WASTE months.

| | |
|----------------------|-----------------------|
| January 2021 | February 2021 |
| TREE WASTE ONLY | JUNK WASTE |
| Thursday, January 14 | Thursday, February 11 |

Important Trash & Recycling Info

- 🗑️ Regular trash pickup is every Thursday.
- ♻️ Recycling is every other Thursday.
- 🗑️ Heavy Trash is once a month, 2nd Thursday.
- 🗑️ Yard waste is picked up on Saturdays.
- ♻️ Westbury is on Recycle Schedule A
- 🗑️ NO Plastic Bags in green recycling bins
- 🗑️ Trash cans need to be on curb by 7AM each Thursday
- 🗑️ Trash cans must be removed by 10PM each Thursday
- 🗑️ Trash cans must be placed at least 3 feet apart
- 🗑️ Trash cans must be stored out of sight.
- 🗑️ Yard waste MUST be in correct biodegradable bags with City logo
- 📞 Call 311 for all trash questions and complaints
- ♻️ Nearby Trash Depositories and Recycling Centers:
SW Trash Depository/Recycling Ctr - 10785 SW Frwy
 Hours: Wed.—Sun. 9AM to 6PM;
 Accepts Junk Waste, Tree Waste & Recyclables.
- ♻️ **Environmental Service Center** - 11500 S. Post Oak
 Hours: Tues/Wed 9AM-3PM; 2nd Sat 9AM-1PM.
 Accepts Hazardous Household & Electronic Waste.
- 🗑️ Refer to www.westburycrier.com or www.houstontx.gov for more trash & recycling info

PLANNING CALENDAR

- March 15-19—HISD Spring Break
- May 4-23—Houston Livestock Show & Rodeo
- June 11—Last Day of School, HISD



2021

Get Involved Today!

Working on Westbury @ Willow Waterhole

WOW Workday — Litter Pick-up

Come join us at the Willow Waterhole for our 1st workday at Westbury Lake on Sunday, January 24, 2-4PM. The Westbury Area Improvement Corporation (WAIC) is adopting the Westbury Lake at the Willow Waterhole. The WAIC, along with the Westbury Civic Club, will be hosting monthly regular workdays at the Westbury Lake. The first workday will focus on litter pick-up. The WAIC will provide trash bags and grabbers. You must wear gloves and a mask.

What: Working on Westbury (WOW) Workday—litter pick-up

When: Sunday, January 24, 2-4PM

Where: Westbury Lake at Willow Waterhole—meet at the gazebo



Cub Scout Pack 8 from St. John's Presbyterian picked up trash around Willow Lake in November. This is a great COVID safe activity that the whole family can participate in.

Eyes on Westbury



Do you wish you could see the detention basins and weirs at the Willow Waterhole? Do you want another way to monitor flooding? Let's get cameras! Join this new group to help get "Eyes on Westbury." This group will research camera options, contact HCFCDD for access questions, fundraise if needed, look into other options with cameras and lights. If you are interested in joining the "Eyes on Westbury" group, please email westburycc@sbcglobal.net.



CAMERAS TO MONITOR WEIRS AND BAYOU

WESTBURY ACTION COMMITTEES

Westbury Flood Action Group

Westbury needs new infrastructure (storm drains) and better flood control along our bayous and ditches. Recent work at the Willow Waterhole basins and weirs helps with some rain events but Westbury needs real answers to the repetitive flooding. In the 1980s, Westbury had a very active Flood Action Group that was instrumental in getting changes and action. The WCC board reactivated this group at the October WCC board meeting. Parkwest 3 Section Director, Lisa Placke, will head this group along with Jennifer Edmondson, Director of Flood Control/Infrastructure. If you are interested, please email westburycc@sbcglobal.net.

Deed Restriction Revision Action Committee

Westbury's deed restrictions are outdated and need to be revised. This group will start meeting in January 2021. If you have already emailed regarding this group, please email us again, we have lost some data with a computer change over. If you are interested in joining, please email westburycc@sbcglobal.net.

Library Action Committee

Westbury is getting a new library. The WCC started a Library Action Committee. This committee will focus on getting up to date information, meeting with the City, and more. This group is currently full. Thank you to all the residents that emailed the WCC office! Look in future Criers for committee announcements.

**JOIN A COMMITTEE TODAY!
GET INVOLVED TODAY!**

Find us on: **facebook**

Westbury Houston

OUTSMARTING CANCER

TAKES LEADING MEDICINE.

From screenings and diagnosis to the most advanced treatments, our leading cancer care is available at seven locations across Greater Houston.

713.790.2700
houstonmethodist.org/outsmartcancer



Why Support the WCC?

Westbury is a unique neighborhood. While all 5,000 homes in our Westbury neighborhood have active deed restrictions, only 463 have mandatory assessments. This means the Westbury Civic Club heavily relies on voluntary financial contributions from residents.

Westbury has historically had strong voluntary support because residents understood the great benefits of the WCC and our programs. The past several years contributions to the Westbury Civic Club and Westbury Area Patrol have been down. By working together, we can meet the challenges head on and keep our neighborhood the jewel that it is. We all want a safe, flood free neighborhood with great schools and nice neighbors!

The total amount for the **2021 Voluntary dues are \$360**. That is less than a dollar a day! The Westbury Civic Club dues are \$60 for the year. The WCC suggests a contribution of \$300 for the Westbury Area Patrol (a paid contract with Precinct 5 Constables).

Why are Westbury Dues Mailed to a Dallas Address?

You are mailing your payments directly to our bank's processing center in Dallas. This allows your payments to be processed immediately. You may also drop off the payment directly to the WCC Office or pay online at www.westburycrier.com

NEW ONLINE RESIDENT PORTAL COMING SOON

We have heard from our residents that they would like to have better options for communications with and payments to the Westbury Civic Club. We agree! We are excited to announce that the WCC is transitioning to a new property management system which adds some features that you residents have been requesting.

We will have a single portal where homeowners can make online payments, view payment history, view important documents, submit requests, and update contact information. The new system will make it easier for you to contact us, and for us to contact you and to be able to track your requests or concerns. There will be more payment options available, including the ability to set up auto-pay scheduled payments.

The office is currently working on the transfer of data and we should have the new system up and running for you early in 2021, The February Crier will have detailed instructions on how to access and use the new system.

In the meantime for those of you that like to pay your dues early, please continue to use the dues form below or paypal.com. You can still pay your dues through our website, www.westburycrier.com.

Go to westburycrier.com then to the Dues and Assessments page.

The available payment options on the selection menu are:

- ➔ WCC Dues — \$60
- ➔ WCC Constable — \$300
- ➔ WCC Dues + Constable— \$60 + \$300 = \$360
- ➔ Additional Donation of \$100 or more

Once you get to the payment page you can opt to pay with your PayPal account, or pay directly by credit card. If you would like to pay a different amount, please use paypal directly and send funds to westburyccl@sbcglobal.net.

Pay your 2021 dues ONLINE at westburycrier.com

Please send this form in with your payment

2021 Westbury Civic Club Dues

DO NOT USE FOR 2020 DUES

Name(s) _____

Address _____

Home Phone _____ Work _____ Cell _____

E-mail _____

Make checks payable to:
Westbury Civic Club, Inc.

Mail to:
P.O. Box 975182
Dallas, TX 75397-5182

Online payment:
www.westburycrier.com
www.paypal.com to email
westburyccl@sbcglobal.net
 Make sure to include your address

| | | |
|----------------------------------|--------------|----|
| Westbury Civic Club Dues | \$60 | \$ |
| Westbury Area Patrol | \$300 | \$ |
| Subtotal | \$360 | \$ |
| Additional Contributions: | | |
| Westbury Civic Club | | \$ |
| Westbury Area Patrol | | \$ |
| Total | | \$ |

Want to send your support in multiple payments?

You may choose any amount to pay in any increment throughout the year.

Here are a few examples:
 2 payments of \$180 is \$360/yr
 3 payments of \$120 is \$360/yr
 4 payments of \$90 is \$360/yr

Thank you for supporting the Westbury Civic Club and our important programs. We can't do it without you! To contact the WCC Office, call 713-723-5437 or email westburyccl@sbcglobal.net.

By filling out this form, you are giving the WCC permission to send you communications. We DO not sell your information or give it out to other entities.

ATTENTION: PARKWEST 1 & 2

Homes purchased in Parkwest 1 after Jan. 1, 1993 and Parkwest 2 after Jan 1, 1994 have mandatory assessments. These assessments may be adjusted by the most recently published annual percentage change for US Urban Wage Earners, US City Average, in accordance to the deed restrictions.

The 2021 Mandatory Assessments of \$250.90 are due 2/1/2021. Invoices will be mailed in December.

Payment plans can be set up for homes that have a past due balance. Please contact the WCC Office at 713-723-5437.

2020 WCC Highlights

Every year the WCC highlights our accomplishments from the past year. Usually this is long list of events, activities, and awards but, as we all know, 2020 did not go how any of us planned or envisioned. After mid-March, all our normal events and programs could not be held due to COVID-19. However, the Westbury Civic Club never stopped working for the neighborhood. We successfully figured out how to deliver the newsletter ourselves for one month, we moved our meetings virtually, and we are creating new COVID safe events. The WCC is still actively advocating for our neighborhood and still operating remotely. Here are some of our highlights from 2020.

Communications

Westbury Crier

Even after the pandemic become concerning in March, we continued to publish our monthly newsletter. The April edition was digital-only, but it got done. The May newsletter was delivered by WCC board members due to uncertainties with COVID. Westbury HS baseball team resumed delivery in June.

Social Media

The WCC Facebook page (Westbury Houston) is updated frequently with reminders about: voting; flooding updates during the tropical storms and hurricanes this year; trash updates; census reminders; support of the Westbury Community Garden; support of the Willow Waterhole; support of Westbury small businesses; and much more. 3,351 people follow us. Go "Like" Westbury Houston Facebook today to know what is happening in Westbury.

Civic Engagement

Monthly Meetings

During the pandemic, the monthly Civic Club meetings moved to online to Zoom and we streamed it over Facebook Live. This has allowed more people to "attend" our board meetings and ask questions via Facebook.

Civic Engagement Study

Our community partner, the Westbury Area Improvement Corporation, was chosen to participate in a research study about civic engagement facilitated by Texas Southern University and the University of Houston. Jennifer Edmondson and Susan Shafer facilitated 5 focus groups of Westbury residents before the pandemic. The data was analyzed, and findings were shared at the WAIC and WCC meetings via Zoom. The WCC has started to implement some of the ideas from the focus group study. We have added several action groups trying to get new residents involved in different, more targeted, ways. The following groups were started in 2020: Library Action Committee, Deed Restriction Revision Action Committee, Westbury Flood Action Group, and Eyes on Westbury.

Open House Events

The WCC hosted the two Open House events in February. The intent early in 2020 was to hold more events at the office such as Westbury 101, All About Deed Restrictions, and more, but the pandemic shifted our thinking. Look for some of these events to happen remotely in 2021!

Constable Fundraiser Event

The WCC hosted a We LOVE Our Constables Event, which was a drive by event due to COVID, where residents had a chance to meet our deputies.

We Love Westbury Month

The WCC posted reasons we love Westbury everyday throughout the entire month of February! The month really highlighted all the wonderful things about Westbury!

Yard of the Month

The Westbury Yard of the Month program runs from March -September each year with special holiday awards in October and December. The Yard of the Month judges love looking at all the beautiful Westbury yards each month, but holiday decorations are always a special treat. In December, the Yard of the Month judges select their top 3 winners from each section, since

there are so many houses decorated for the holidays. For 2020, we added a NEW online contest with fun categories.

Public Safety

The WCC works closely with the Precinct 5 Constables and with the Houston Police Department (HPD). We also attend the BOMD (Brays Oak Management District) Public Safety monthly meetings as well as the Houston Police Department's SW PIP meetings. Speeding continues to be an issue, not only on our major thoroughfares, but also on our residential streets. HPD brought a speed trailer out to West Bellfort and again to Hillcroft to measure vehicles' speed. Pct. 5 has added traffic patrol units and even a motorcycle unit along Willowbend.

Westbury Area Patrol (WAP)

The Precinct 5 Constables program is the most expensive and most important program provided by the WCC to our residents. During the summer, when we noted a high number of Burglary of Motor Vehicles, Precinct 5 put together a plan of action for additional resources using additional patrols and specialized units.

Constable Program Saved

On March 10, right before the pandemic, Cindy Chapman and Becky Edmondson joined over a hundred like-minded Harris County residents in person, along with the Constables and Sheriff Ed Gonzalez and CM Mike Knox to support the Constable Contract Deputy program. The Constables and Sheriff Gonzalez spoke eloquently in defense of their officers and their programs that provide front line community policing. Over one hundred people signed up to speak and County Judge Hidalgo gave everyone their opportunity to speak for three minutes. We are pleased to announce that the Commissioners opted to table that controversial proposal to study "the elimination of the Constable's ability to enter into contracts", thus saving the ability of the Constables to continue security patrol services via contracts with neighborhoods.

A Pioneering New Middle School for SW Houston in 2021-2022

Contact us: info@dbahouston.org

DBA

Reflective Minds
Compassionate Hearts
Innovative Academics

Dietrich Bonhoeffer Academy
Learning Reimagined
Come explore at www.dbahouston.org

PEROT PLUMBER
Call Chris
713-667-7500
Expert Plumbing Repairs
Sewer Repairs
Water Heaters
MPLS17909

Flooding Advocacy

The WCC has advocated for years for solutions to reduce flooding along Willow Waterhole Bayou. Protecting homes that have flooded repeatedly continues to be a priority, and we are making progress. In November, City Council and Mayor Turner authorized the purchase of the 6.5 acres Spring Valley Apartments at Ludington and Chimney Rock. After residents have been relocated, the land will be dedicated and maintained in perpetuity as open green space to reduce flooding.

In September, the City of Houston took TWO important steps to reduce risk of flooding here in Westbury. City Council authorized funds to purchase land for a new stormwater detention basin upstream of Westbury, located between Hillcroft and Fondren, on the bank of the Fondren Diversion Channel. City Council also approved \$1.4 million for a capital improvement project, Westbury Area Drainage and Paving Improvements Sub-project 1. This project consists of the design of new storm drains, streets, curbs, sidewalks, driveways and underground utilities. The design contractor is waiting on a regional hydraulic study to be completed that will reflect the new Atlas 14 rain data before the next step can begin. Sub-project 1 is projected to be complete in 2024.

In March, Harris County Flood Control District (HCFCD) began demolishing several homes they had purchased along Willow Waterhole Bayou. The Flood Control District will use the sites to construct shallow swales to improve the flow of storm water into the nearby Willow Waterhole Bayou. To date, 6 homes have been purchased and demolished by HCFCD.

Opposition to Tollway Expansion

In September, Cindy Chapman and Becky Edmondson spoke before Harris County Commissioners Court to voice their opposition to S. Post Oak becoming an extension of the Fort Bend Tollway. The Court unanimously voted to halt engineering design work for a future toll road.

Greenspaces

Westbury Trails

Westbury volunteer and trail advocate, Allen Potvin, has kept all Westbury unimproved trails mowed this year and free of debris. His major accomplishment this year was the opening of the trail along the Hummingbird Bayou, which had been obstructed by two fenced yards encroaching on the easement. He negotiated with the homeowners to relocate their fences and then he cleared the land for trail users. Residents love that this trail that now runs from Braewick all the way to the Willow Waterhole Greenway.

Working on Westbury Events

The WCC is resuming Working on Westbury events to improve our community, in partnership with the Westbury Area Improvement Corporation (WAIC). The initial December event was rained out, but we plan to have more events in 2021 to clean up and spruce up our public places.

Westbury Parks

The WCC had meetings with the SPARK park program to discuss a proposed SPARK park renovation for Hager Park, next to Anderson Elementary, and to seek solutions for fencing for the school playground.

Volunteer Service

Board members of the WCC are active in organizations seeking to make our public places better. We participated in the Brays Oaks Management District (BOMD) Parks and Trails Master Plan 2020 update, and also in the BOMD Streetscape Master Plan study (in progress). Additionally, WCC board members are active in: the Willow Waterhole Greenspace Conservancy, the Westbury Community Garden, SW Houston 2000, Brays Bayou Association, Levitt Pavilion Houston, Neighborhoods to Trails Southwest, Keep Houston Beautiful Commission, and Super Neighborhood Alliance.

School Outreach

The Westbury Civic Club works closely with our local schools. The continuing success of our schools is important for our Westbury families with children as well as for property values. Parker Elementary, Anderson Elementary, Meyerland Middle School, and Westbury High School all send representatives to the monthly Westbury SuperNeighborhood meetings. Parker, a Music Magnet, continues to be a highly sought after school. Anderson has had its challenges, but the new principal has established a PTO plus has good community support; things are improving. Meyerland Middle School is a solid choice for Fine Arts plus academic classes. Westbury HS, a Fine Arts Magnet, continues to improve every year; its new Fine Arts wing was completed in 2020. More and more Westbury families are sending their kids to Westbury HS and love it.

Anderson Elementary

Members of the WCC met with Principal, Dr. Everett, to look at several school issues including: a long-standing muddy sidewalk issue, the playground, the library space, and the physical condition of the school foundation/walls, where large cracks are visible. The WCC is advocating for Anderson to get a new building. Anderson is adjacent to Hager Park, and the WCC met with the Kathleen Ownby, of the SPARK program, to talk about the current SPARK Park need and Anderson's desire to move their fence. These projects are ongoing.

Westbury High School

The WCC hosted a very successful Hygiene drive for Westbury High School which collected a lot of much needed supplies. The WHS Baseball Booster Club continues to deliver the Westbury Crier and the money it earns goes into the WHS baseball program. The WCC worked with the Bray Oaks Management District to get the damaged WHS-mini mural repainted, located at the corner of Gasmer and Chimney Rock.

ALL TYPES IRRIGATION, INC.

OVER 30 YEARS EXPERIENCE
Design • Drainage • Installation • Service
Commercial • Residential

Emil Becker
T.I.L. #4415
D.L. #126891

Office: (713) 726-1636
Fax: (713) 726-8322
Cell: (713) 819-2872

Hunter Preferred Contractor



Maxx Gonzalez
El Arte D'Pintar
Expert Int./Ext. Paint
832-212-0739
maxx@maxxgonzalez.net
www.maxxgonzalez.net



◆ Sheetrock Repair ◆ Stain
◆ Fancy Texture ◆ Walls ◆ Faux Finishing

All About Trash

Special Edition

HEAVY TRASH Explained!

The City of Houston provides residents with FREE curbside monthly heavy trash collection, alternating “TREE WASTE” collection months with “JUNK WASTE” collection months. The collection cycle is the same every year, as shown below. **ALL of Westbury is picked up on the 2nd Thursday of each month.**

Heavy Trash can be placed on the curb starting the Saturday before the scheduled collection date. Do not place heavy trash on the curb early. Not only is it a violation of city ordinance but it is ugly and no one wants to look at their neighbor’s trash for weeks on end.

| TREE WASTE | JUNK WASTE |
|------------|------------|
| January | February |
| March | April |
| May | June |
| July | August |
| September | October |
| November | December |

What is “Junk Waste”?

“Junk Waste” includes furniture, appliances, lumber, fencing, and other bulky items (including tree waste, but the tree waste would then be sent to landfill rather than mulched). **The city will NOT collect bagged yard waste placed in improper bags during a Junk Waste month.**



What is “Tree Waste”?

“Tree Waste” consists of tree limbs, shrubby limbs, or branches of trees and shrubs. If the Tree Waste has other types of materials mixed in with it, then it is no longer Tree Waste. Lumber, fencing and similar materials are NOT considered Tree Waste. During a Tree Waste month, only Tree Waste materials will be collected.



What is “Yard Waste”?

“Yard Waste” consists of leaves, grass clippings, small yard trimmings or branches. **Yard Waste must be in a city-approved bag**, or small branches bundled (tied) into a pile less than 4 feet long, less than 18 inches in diameter, and less than 50 pounds in weight. “Yard Waste” is picked up every Thursday.



Trash Problems

Broken or missing trash or recycling can— Please report to the City of Houston via 311. The City will provide you a Service Number (SR) to track your request. Once you have reported your broken or missing can, call the WCC office to help expedite the request. Typically the City allows for 2 weeks for this type of request. However, if your request is past due, please contact the WCC office. We can typically get a better response via our Solid Waste contact.

Late/Skipped Pick-Up— Leave the trash at the curb. Report to 311. If your trash is not picked up on the scheduled day, please report to 311 and leave it on the curb as it likely coming soon!

Westbury Trash Dates

Every Thursday is regular trash pick-up in the black rolling can

Every Thursday is yard waste pick-up, only collected if bag correctly (see below)

Every other Thursday is recycling in the green rolling can

2nd Thursday of every month is Heavy Trash. Odd months are TREE WASTE ONLY and even months are JUNK WASTE

Trash Can Placement

Household garbage must be put inside the city-provided container which should be placed at the curb between 6PM Wednesday evening and 7AM Thursday morning. The container must be accessible to the automated collection truck and not blocked by obstacles, including parked cars. Homeowners with multiple trashcans MUST place trashcans three (3) feet apart. Do not place cans next to light poles or trees. The city has started tagging cans that are placed incorrectly. Homes on corners must place their trash cans on the front street (not side). Trash cans must be removed from the curb by 10PM Thursday.

TRASH CAN PLACEMENT EXAMPLES



Too much trash this week? Buy “tags for bags” from Fiesta, HEB and participating Kroger stores to get your tags for your extra bags of trash picked up. Cost is \$2 per tag, plus tax.

What goes in the large green bin? Recyclables such as steel or aluminum cans. Paper. Certain plastics, not # 6. Glass IS allowed in the large recyclable bins. Recycling is picked up every other Thursday.

What goes in the large black trash bins? Household garbage such as personal trash and food waste are to be placed in the large black trash bins. Household garbage day is Thursday. No yard waste, dead animals, household hazardous waste, or electronics are allowed.

Trash Reminder App Rollout!

The City of Houston Solid Waste Department has a free app for smartphone users, Rollout! It is available for Androids and iPhones. Insert your address, set reminders and never forget when trash day is! The app will send notifications to your phone to remind you when to recycle trash, regular trash and even heavy trash.



Environmental Service Center – South

11500 South Post Oak - between Gasmer and South Main

Recycle and Household Hazardous Waste

Various household hazardous waste is accepted such as anti-freeze, fuel, oil, paint, paint thinner, pesticides, herbicides and household cleaners. Residential electronic scrap items will also be accepted (monitors, televisions, printers, keyboards, mice, scanners, fax machines, telephone handsets, VCRs, CPUs, cellular phones and other small consumer electronics). These items should not be placed on the curb with or in your container for collection with garbage or heavy trash pick-up. **The center is open every Tues. and Wed. from 9AM to 3PM and the 2nd Saturday of the month from 9 AM- 1 PM.**



Items that can be taken to the Environmental Service Center

Reuse Chemical Take Away (FREE)

The City of Houston's Environmental Service Center South offers free paint and household chemicals. Located at **11500 South Post Oak Road**, the Center is open for reuse chemical distribution on **Fridays from 9AM to Noon**. First come, first served.

ReStore (Craft Items, Books, Post Consumer & Industrial Scrap - FREE)

The ReStore, which acts as a book swap, recycling info library, as well as a repository for craft items and post consumer and post industrial scrap (useful for art projects). Located at **11500 South Post Oak**, items can be taken away from **9AM - Noon every Friday** during the Reuse Chemical Take-Away.

Holiday Do NOT Recycle List

Here are some of the holiday items that should NOT be placed in your recycle bins. Either they are not processed at our city recycle centers, or they wrap around the machinery and create processing problems.

- ⇒ **No Holiday lights**
- ⇒ **No gift wrapping paper, ribbons, trim, and bows**
- ⇒ **No Yard inflatables**
- ⇒ **No Clothing (including Ugly holiday sweaters)**
- ⇒ **No Batteries. (Note. Put alkaline batteries in the trash. Take rechargeable batteries to the local Environmental Service Centers at either S. Post Oak or Westpark)**



Visit rorr.com or follow Waste Management on Twitter @WasteManagement to learn more about what should and should not go in your recycle bin.

All About Trash

Special Edition

Southwest Neighborhood Depository & Recycling Center (for Heavy Trash Drop-off)

10785 Southwest Freeway Houston, TX 77074
Phone: 713.541.1953

This facility accepts Junk Waste, Tree Waste and Recyclables at no additional charge to City of Houston residents. Citizens may use the depositories four times per month. You must provide a Texas Driver's License or ID and a current utility bill or city property tax receipt. **The depositories will also accept the following items:** Furniture, Tree limbs, Stoves, Refrigerators, etc., 10 auto tires (Rims Not Accepted)
Open Wednesday - Sunday, 9AM to 6PM.

Westpark Recycling Center

5900 Westpark

This facility is a drive through operation so you do not have to unload your vehicle.

The center accepts: aluminum and tin cans, oil filters, used tires, computers, #1-7 plastic containers, GLASS bottles and jars, telephone books, office paper, cardboard, magazines, and used motor oil. Newspapers placed in a brown bag will also be accepted.

Open Monday– Saturday from 8AM to 5PM.

Reuse Warehouse

9003 N. Main St.

The facility accepts material from individuals, supply companies, and builders, and makes it freely available for reuse by any non-profit organization.

Open Tuesday thru Friday from 8:30AM to 4:30PM and every 2nd and 4th Saturday of the month from 8:30AM to 4:30PM

Trash Violations

Violation of any provision of the solid waste ordinance is punishable upon first conviction by a fine of no less than \$50 nor more than \$2,000. Each subsequent conviction is punishable by a fine of no less than \$250 nor more than \$2,000. Each day that any violation continues may be punishable as a separate offense. **To report a violation or to file a complaint, call 311.** Solid Waste Management Department Supervisors can write citations.

CHRISTMAS TREE RECYCLING

The City Of Houston will pick up Christmas trees from the curb in January on Heavy Trash Tree Waste Day, January 14.



The trees must have all decorations, ornaments, tinsel, lights and stands removed. Flocked trees cannot be recycled. Christmas trees may also be dropped off at the Westpark facility as well as the Southwest depository.



RECYCLE OFTEN.
RECYCLE RIGHT.



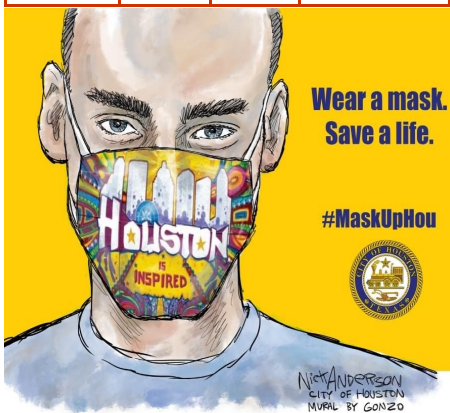
Support the Constable Program
 Pay your 2021 Dues!
 Dues form is on page 7
 WE NEED YOUR SUPPORT



Confirmed LOCAL Cases of COVID-19

(data from publichealthharriscountytexas.gov)

| | 77035 | 77096 | Houston |
|----------|-------|-------|---------|
| 4/23/20 | 54 | 59 | 2,975 |
| 5/21/20 | 108 | 85 | 6,188 |
| 6/24/20 | 334 | 183 | 16,253 |
| 7/27/20 | 748 | 492 | 45,145 |
| 8/26/20 | 1,102 | 700 | 62,097 |
| 9/26/20 | 1,255 | 817 | 72,684 |
| 10/26/20 | 1,360 | 894 | 82,999 |
| 11/23/20 | 1,504 | 1,026 | 93,988 |
| 12/20/20 | 1,779 | 1,240 | 110,445 |



Matching Donation for Constable Patrol

Would you like to make a donation beyond the \$300 dues for the Constable patrol and have that contribution matched? One generous Westbury resident has offered to match all DONATIONS above the dues amount, up to a total of \$5,000.

We know times are tough for many residents right now, so this generous match is an incredible gift to our neighborhood. We all want to live in as safe and secure a neighborhood as possible. With HPD stretched thin and criminals being released right back onto our streets, this extra layer of security from the Constable patrol is more important than ever. The Westbury Area Patrol (WAP) has been patrolling our streets for almost 40 years. For just under a dollar a day, the Precinct 5 Constables are a phone call away.

You can pay by check or credit card or e-check. The dues form is on page 7, along with information on how to pay online.

Westbury Animal Hospital Now Providing Critical Care for Injured K9 Police Dogs

Let's give a round of applause to Westbury Animal Hospital, which is one of only 3 veterinary hospitals in the Houston area, and the entire nation, selected to treat critically injured K9 police dogs transported via Life Flight Helicopter. Memorial Hermann Life Flight announced in December 2020 that its helicopter service is the only one in the nation which will accept critically injured K9 police dogs for flight.

Aaron Young, a life flight paramedic and trainer, and Sandy Young, a nurse supervisor and former veterinarian technician, developed a First Aid course for K9 police dogs injured in action. They use Westbury Animal Hospital for pet care services and recruited Westbury Animal Hospital to participate in the K9 Life Flight program in Houston. To be able to receive injured K9 police dogs, Westbury Animal Hospital made arrangements with the church located behind the veterinary hospital, Christian Assembly of Houston, which has sufficient space in the parking lot for a helicopter to land.

November 2020 Election Summary

The Westbury Civic Club is a non-partisan organization and does not endorse candidates. We do, however, believe that voting is very important. Westbury is respected as an area with high voter turnout. Once again, Westbury voters turned out in high numbers to express their opinions during the November 2020 elections. Overall, slightly more than 68% of eligible voters across Harris County voted in this election. Three of our Westbury area precincts had more than 80% voting participation during this election! Seven of our 9 precincts had a higher than typical voting rate! Here is a list of all the Westbury area voting precincts

Westbury Precincts Voting %

| | |
|--------------|----------------|
| Precinct 14 | 81.19 % |
| Precinct 22 | 60.16 % |
| Precinct 146 | 79.85 % |
| Precinct 281 | 85.27 % |
| Precinct 291 | 72.93 % |
| Precinct 293 | 75.64 % |
| Precinct 403 | 87.12 % |
| Precinct 453 | 62.95 % |
| Precinct 693 | 69.47 % |

Precincts in BOLD voted at higher rate than the Harris County average Of 68.14%

Harris County Voters

Total Number of Voters- 1,656,686
 Percent of Eligible Voters Who Voted - 68.14%



Top Producer
 Lifelong Westbury Resident



Selling, Buying, Investing
 YOUR Real Estate Expert

Donna Strom

Text or Call 713-859-5296
donna@camelothouston.com

Crime Statistics for Westbury Super Neighborhood

November 23—December 23, 2020
Crime in Westbury Single Family Homes

KEY

| Block | Street | Crime | Date | Time | Section of W |
|-------|--------------|--------------------------------|-------|------|----------------|
| 5900 | Bankside | Burglary, Breaking & Entering | 11/25 | 11am | Westbury 5 |
| 12300 | Braewick | Destruction, Damage, Vandalism | 12/7 | 6pm | Westbury 4 |
| 5400 | Briarbend | Burglary, Breaking & Entering | 12/9 | 1pm | Westbury 2 |
| 6000 | Cartagena | Simple Assault | 11/23 | 10pm | Parkwest 3 |
| 10900 | Cedarhurst | Destruction, Damage, Vandalism | 12/9 | 9am | Westbury 2 |
| 5900 | Dryad | Auto Theft | 12/16 | 8AM | Westbury 4 |
| 11200 | Endicott | Destruction, Damage, Vandalism | 12/6 | 4pm | Westbury 1 |
| 5500 | Etrick | Theft from Motor Vehicle | 12/2 | 9pm | Westbury 4 |
| 5600 | Etrick | Theft from Motor Vehicle | 12/13 | 10pm | Westbury 4 |
| 5700 | Farwell | Burglary, Breaking & Entering | 12/23 | 2AM | Westbury South |
| 5700 | Firenza | Theft from Motor Vehicle | 12/22 | 6pm | Westbury South |
| 5200 | Kingfisher | Burglary, Breaking & Entering | 12/20 | 10pm | Westbury 1 |
| 5000 | Kinglet | Theft of Vehicle Parts | 12/6 | 10pm | Westbury 1 |
| 5400 | Kinglet | Theft from Motor Vehicle | 12/4 | 1PM | Westbury 2 |
| 6000 | Ludington | Auto Theft | 12/3 | 8PM | Westbury 4 |
| 10800 | Moonlight | Burglary, Breaking & Entering | 12/6 | 11pm | Westbury 2 |
| 10900 | Oasis | Auto Theft | 12/4 | 8am | Westbury 2 |
| 5800 | Portal | Theft from Motor Vehicle | 12/4 | 10am | Parkwest 2 |
| 11500 | Renwick | Theft from Motor Vehicle | 11/24 | 9pm | Westbury 3 |
| 11900 | Renwick | Theft of vehicle parts | 12/10 | 3pm | Westbury 3 |
| 5200 | Sanford | Disorderly Conduct | 12/18 | 12am | Westbury 3 |
| 5400 | Spellman | Burglary, Breaking & Entering | 12/22 | 1am | Westbury 3 |
| 5500 | Stillbrooke | Burglary, Breaking & Entering | 11/30 | 6pm | Parkwest 1 |
| 6000 | Warm Springs | Burglary, Breaking & Entering | 11/29 | 4pm | Parkwest 3 |

| | |
|-----------------------------------------------------------------------------------------------------------------------------|-------------------------------|
| | Theft from Motor Vehicle |
| | Auto Theft |
| | Property Crime |
| | Burglary |
| | Assault, Simple or aggravated |
| | Robbery |

The crimes listed took place between November 23 and December 18.

They are in alphabetical order by street.

The crimes are highlighted by type. Please see key above.

Support the Constable Program

Pay your 2021 Dues!

Dues form is on page 7



| Crime Type | Homes | Apts./TH | Comm./Business | Park/School |
|-------------------------------|-----------|-----------|----------------|-------------|
| Aggravated Assault | 0 | 9 | 1 | 0 |
| Theft from Motor Vehicle | 6 | 2 | 4 | 0 |
| Burglary, Breaking & Entering | 8 | 3 | 2 | 0 |
| Robbery | 0 | 1 | 2 | 0 |
| Simple Assault | 1 | 9 | 1 | 0 |
| Shoplifting | 0 | 0 | 19 | 0 |
| Drugs, Narcotics | 0 | 0 | 0 | 0 |
| Vandalism, Damage | 3 | 16 | 4 | 0 |
| Auto Theft | 3 | 3 | 0 | 0 |
| Fire, Arson | 0 | 0 | 0 | 0 |
| Theft of Vehicle Parts | 2 | 4 | 1 | 0 |
| Disorderly Conduct | 1 | 0 | 0 | 0 |
| Counterfeit, Forgery | 0 | 0 | 1 | 0 |
| TOTAL | 24 | 47 | 35 | 0 |

Pct. 5 Constable Dispatch
Westbury Area Patrol
281-463-6666
SW HPD Station
832-394-0400
HPD Non-Emergency
713-884-3131

Vacation Watch

Leaving town for the winter holidays or New Year? Visiting family? If you pay your Westbury Area Patrol dues, make sure you request a vacation watch by the Constables. This is a great service that is included in our contract.

A deputy will check out your property at least once a day to make sure it is secured and nothing suspicious going on.

You can register for a vacation watch online at <https://constablepct5.com> or by calling 281-463-6666 and requesting a deputy come by your house.

Numbers & Statistics

WHAT A YEAR!

Despite a tough year for many with the pandemic and historically low inventory, sales across our area continued selling similar to prior years. The average sales price is holding steady, in spite of being lower due to the sales of flooded homes. This year, record low interest rates are driving home sales to a record pace. The high end of the market generated the strongest increase in consumer activity with mid-range homes also selling briskly.



56

average days on market

\$241.40

highest sold price per square foot

| | Min | Max | Average | Median |
|-----------------|-----------|-----------|-----------|-----------|
| List Price | \$115,000 | \$595,000 | \$296,477 | \$289,900 |
| Sold Price | \$110,000 | \$599,000 | \$285,998 | \$285,000 |
| Adj. Sold Price | \$110,000 | \$599,000 | \$284,020 | \$280,725 |
| LP/SF | \$60.40 | \$241.40 | \$151.56 | \$149.58 |
| SP/SF | \$52.25 | \$241.94 | \$146.28 | \$144.15 |
| Adj. SP/SF | \$52.25 | \$241.94 | \$145.22 | \$143.13 |

THINKING OF SELLING OR BUYING? GIVE US A CALL FIRST!



“In my 20 years in the real estate business, I have never seen a market defy supply and seasonality the way Houston has – amid a pandemic, no less,”

SUSAN BROCK



BROCK and FOSTER
> Real Estate

713-922-0877
brockandfoster.com

2020 figures as of 12/15/2020

Holidays in Westbury

HOLIDAY YARD OF THE MONTH WINNERS

Westbury 1

1st Place - 5222 Briarbend - John and Peggy Dybala
 2nd Place - 10910 Endicott - Rusty Grones & Niclas Mesidor
 3rd Place - 5011 Creekbend - Erwin and Merline Higgins
 Best block - Fonda St.

Westbury 2

1st place - 11135 Cedarhurst - Homeowners
 2nd place - 5458 Redstart - Kelly Lewis
 3rd place - 10623 Oasis - Naomi and Julie Doyle-Madrid
 Best Block - 5400 Redstart

Westbury 3

1st place - 5723 Belrose - Tim Datchko
 2nd place - 11611 Mullins - Homeowners
 3rd place - 11610 Mullins - Homeowners
 Best Block - 5700 Belrose

Westbury 4

1st Place - 5715 Ettrick - Ken Blaler
 2nd Place - 11927 Dunlap - Brent Leafgreen & Alan Moehler
 3rd Place - 5515 Duxbury - L. & S. Holder
 Best Block - 5700 Ettrick

Westbury 5

1st Place - 5935 W. Bellfort - Curtis Monroe & Kelly Woody
 2nd Place - 10926 Hillcroft - Gekas Xenoton
 3rd place - 10631 Dunlap - Sherrie Fancher
 Best Block - 11000 Atwell Drive

Westbury South

1st Place - 5714 Firenza - Homeowners
 2nd Place - 5703 W Airport - Homeowners
 3rd Place - 5862 Greencraig - Homeowners

Parkwest 1

1st Place - 5639 Portal - Keith & Felicia Kendall
 2nd Place - 5615 Portal - Brian & Jeanette Mueller
 3rd Place - 5631 Hummingbird - Josh Weisberg & Ashley Hope
 Best Block - 11000 Crestmore

Parkwest 2

1st Place - 5723 Portal - Richard Tapia
 2nd Place - 5818 Bankside - Angela Wilkins
 3rd Place - 5703 Benning - Debbie Beckman

Parkwest 3

1st Place - 5903 Arboles - Jeff & Karen Burns
 2nd Place - 5914 Arboles - Brandon & Bonnie Shipp
 3rd Place - 11503 Braewick - Howard & Dorothy
 Best Block - 6000 Beaudry



ONLINE CONTEST WINNERS

Best of 2020 (Theme Winner)

11923 Ashcroft

The Shining (Most/Brightest Lights)

5238 Creekbend

All Decked Out (Over the Top)

11111 Fonda

Overly Inflated (Most/Unique Inflatables)

5639 Portal

Best Hanukkah (Religious)

10918 Ashcroft

Best Christmas (Religious)

5703 Benning



In addition to our normal holiday yard of the month, this holiday season the WCC added a new online contest. We had an overwhelmingly positive response with 55 nominations in 6 categories. Over 5 days, people voted by "Liking" the photo on Facebook. The home with the most "likes" or "loves" won.

For pictures of all the winners and nominations, check out Westbury Houston Facebook page.



New HISD Trustee for District IX

Houston ISD trustees unanimously voted on Dec 10 to appoint lawyer Myrna Guidry to fill the HISD board seat vacated last month by Trustee Wanda Adams. HISD District IX includes most of Westbury and Westbury's zoned schools.



Trustees considered 8 applicants before selecting Guidry, who has operated a private law practice focusing on family and probate law for the past two decades. She is also an adjunct professor at TSU in the Thurgood Marshall School of Law and has worked as a certified mediator. Guidry received her undergraduate degree from Tulane University and her law degree from South Texas College of Law Houston. "I am grateful and happy to have this opportunity to serve the district by working to build up our students' potential and do whatever I can to contribute to their ultimate success," Guidry said.

Guidry will serve the final 12 months of the remaining term. Trustee Wanda Adams resigned from the Trustee position following her election as a Justice of the Peace.

We thank Wanda Adams for her service and look forward to working with new Trustee Myrna Guidry on issues related to HISD.

TCEQ PUBLIC HEARING SCHEDULED FOR JANUARY 21

In the spring of 2020, the WCC was made aware of a new entity, Solugen Chemical, purchasing property at 14549 Minetta and applying to the TCEQ for an environmental air permit. This location is near the Westbury Community Garden, Haviland Park, and Foerster Elementary. Concerned about the safety of the nearby community, we asked our elected officials to request a hearing to discuss the pending TCEQ air quality permit. On May 20, 2020, Rep. Thierry submitted a public meeting request to TCEQ to discuss Solugen Chemicals, LLC, Permit 160902. TCEQ has scheduled a virtual public meeting about the requested air permit for Thursday, January 21, 2021 at 7:00pm via GoToWebinar.

Members of the public who would like to ask questions or provide comments during the meeting may access the meeting via webcast by following this link: <https://www.gotomeeting.com/webinar/join-webinar> and entering Webinar ID 150-875-499. It is recommended that you join the webinar and register for the public meeting at least 15 minutes before the meeting begins. The meeting will have two parts, informal and formal. Any comments made in the informal section will not be considered by the commissioner's.

For more information, check out Westbury Houston Facebook. We will post any new time sensitive information on our page.

FIRST ANNUAL TIGER CLASSIC



Looking for a COVID-safe outdoor activity? Want to give back locally? Come out to the 1st Annual Tiger Classic Golf Tournament, benefitting St. Thomas More Parish School on January 18 at Quail Valley Country Club.

The format of the tournament is individual play or 4 person scramble with shotgun start. If you are interested in participating, go to www.stthomasmore-school.org and scroll down to the Golf Tournament box. The school is looking for individuals and businesses who would like to partner with the school by sponsoring a hole at the golf tournament. There are multiple levels including one for alumni. You can sign up for sponsorship online at www.stthomasmore-school.org or email Janice Felton at jfelton@stmorenews.com

The golf tournament will be on January 18 at Quail Valley Country Club.

Call to Schedule a Private Tour 713-7 29- 3434

5927 Wigton
Houston, TX 77096
www.stthomasmore-school.org



- PreK–8th Grade
- Face to face learning
- Enhanced classroom technology
- State of the Art Science Lab
- Competitive Sports Program



ST. THOMAS MORE PARISH SCHOOL
Reaching Minds · Touching Hearts · Shaping Souls

Giant Cabbage at the Garden

Westbury loves public art! A giant cabbage was delivered to the Westbury Community Garden on December 11. Arriving on a flatbed truck and hoisted into position by a crane, the cabbage had everyone's attention. It felt a bit like Christmas, as gardeners gathered to watch this wonderful gift of public art arrive.



Everyone had a chance to meet and speak with Bill Davenport, the "Big Cabbage" artist. His cabbage is sculpted of steel-reinforced polymer concrete and weighs a whopping 4,000 pounds. When asked about the process, Bill said he started with a series of small models, including an onion, a jalapeno, and an owl. The cabbage came out the winner.

The Westbury Community Garden sends its thanks to the artist for this whimsical public art. It will be on public display at the garden for some period of time. This sculpture was commissioned for the Heights Blvd. 2020 True North art exhibit.

Now In its 7th year, the True North art exhibit puts art on display along Heights Blvd.



SEEDMONEY FUNDRAISER A SUCCESS

Many thanks all the supporters of Westbury Community Garden who contributed to the #SeedMoney Challenge Fundraiser. The garden not only earned the Strong Start bonus for reaching our \$2500 goal in the first week, but we received more than double those contributions in subsequent weeks earning \$500 in matching funds. SeedMoney is a non-profit that supports food production projects worldwide by helping with fundraising. WCG was among 250 garden/farming projects competing for matching grants. \$5,391 was raised plus the \$600 for being in the top 10 earners and for our strong start. Thank you!

Though the matching program has ended, donations may still be made to fundraising@westburycommunitygarden.org via Paypal.

Braeswood Farmer's Market

Are you looking for an alternative to grocery stores? Looking for fresh vegetables or eggs? Come to the Braeswood Farmer's Market at Chimney Rock and South Braeswood on **Saturdays from 9AM-1PM or Wednesday evenings from 4-8PM.**

**Wednesday
4PM-8PM**
**Saturday
9AM-1PM**



WHERE IS THE GARDEN?

12581 Dunlap (77035) is off Hillcroft between W. Airport and South Main. Heading south on Hillcroft, turn right onto Greencraig, follow it around the bend where it turns into Dunlap. The large blue roof on the WCG Pavilion is readily visible. Street parking.



Like "Westbury Community Garden Houston" on Facebook

WESTBURY CHRISTIAN
10420 Hillcroft St. Houston, TX 77096

OPEN HOUSE

**January 24
2:00 PM**

RSVP Required
WestburyChristian.org

Explore the Willow Waterhole

Map of Entire Willow Waterhole Greenway

Destination:
WILLOW LAKE



A. Parking

Parking is available onsite at several locations. One parking location is on-street parking located off Ricecrest. You can also park on either one of the Clematis cul-de-sacs. You can access Clematis from either Gasmer or S. Willow.

B. Primitive Trails

The green lines on the map to the left are primitive trails. These trails are fun to walk or ride bikes along.

C. Benches

There are several benches located along the primitive trail around Willow Lake. Located in beautiful serene locations, bring a book or lunch and enjoy nature.

D. Birding

The Willow Waterhole detention basins are a great place for bird watching. Specifically the muddy flats area of the lake near South Post Oak to see many different species of birds, such as killdeer and gulls. Make sure to bring your binoculars.

Willow Lake at the Willow Waterhole
 The Willow Waterhole has 6 "lakes". One of the lakes is Willow Lake. The map below is labeled with amenities and trails at Westbury Lake. Read all about these great amenities to the right.
 Go Explore the Willow Waterhole!!!



Volunteers at Willow Lake collecting trash

www.willowwaterhole.org



EAGLE SCOUT PROJECT

The Willow Waterhole Greenspace Conservancy frequently works with Boy Scouts and Girl Scouts trying to complete their Eagle or Gold Projects. Many great features throughout the Willow Waterhole are due to scout projects.

Natalia Lopez completed part 1 of her Eagle Project at Willow Waterhole on December 5. She will be of the few girls who have completed an Eagle Project in Texas and likely the first in Houston! The Boy Scouts of America only recently began accepting girls into the program.

Natalia and her friends and family planted sixteen wax myrtles and two live oaks on the AT&T private property adjacent to the Willow Waterhole near the Dabney Kennedy Pavilion. This industrial facility has equipment, trailers, and a dumpster along its fence-line. The plantings will ultimately create a green buffer. Both the wax myrtles and live oaks are evergreen plants. The wax myrtles are bushy from the ground up, growing to about 15 feet wide and 15 feet high.

Special thanks go to Maplewood resident Kate Brusegaard. She is an AT&T retiree and worked to get an agreement with AT&T to allow the planting on their private property.



Natalia Lopez along with her family and friends and volunteer, Kate Brusegaard

Working on Westbury @ Willow Waterhole

WOW Workday — Litter Pick-up

Come join us at the Willow Waterhole for our 1st workday at Westbury Lake on Sunday, January 24, from 2-4PM. The Westbury Area Improvement Corporation (WAIC) is adopting the Westbury Lake at the Willow Waterhole. The WAIC along with the Westbury Civic Club will be hosting monthly regular workdays at the Westbury Lake. The first workday will focus on litter pick-up. The WAIC will provide trash bags and grabbers. You must wear gloves and a mask.

What: Working on Westbury (WOW) Workday—litter pick-up
When: Sunday, January 24, 2-4PM
Where: Westbury Lake at Willow Waterhole—meet at the gazebo (see page 18 for map)



Follow Westbury Houston Facebook for event updates.

“ AREA RESIDENTS AND NEIGHBORHOOD SPECIALISTS ”

JACKIE AND KENDYL TEAM



JACKIE MURRAY (713) 825-9179



KENDYL MAURER-SOMER (281) 904-8199

Over 40 Years of Experience
 Selling? **SOLD** when you list with us!

JackieKendylTeam@WayneMurray.net



The Murray Group
 (713) 728-2300



We're Local We're Global



11210 Endicott Lane
 5/2/2 • \$340's



10922 Endicott Ln
 3/2/2 • \$340's



5611 Hummingbird
 3/2/2 • \$370's



10607 Hillcroft
 3/2/2 • \$310's (mother-in-law suite)



5510 W. Bellfort
 4/2/2 • \$380's



5202 Briarbend
 3/2/2 • \$330's

HOUSTON • KATY • SUGAR LAND • THE WOODLANDS



Neal Rosen

I help parents of children with Asperger's Syndrome navigate daily hurdles and reach long-term milestones.

I'm a 20-year Westbury resident with three sons ages 17-20, I have first-hand experience parenting a child with Asperger's who is now a self-sufficient adult, and I'm a professional life coach. I will work with you to form strategies and action plans for you to achieve your parenting goals.

To try a free coaching session, please email me at rosenworks@yahoo.com

ASTRO PLUMBING

Repair & Remodel Experts

Sewers & Drains · Water Lines · Water Heaters
 Kitchen & Bathroom Plumbing & Tile · Gas Lines / Testing
 Home Generators · Reroutes / Tunneling · Camera Inspection
 Walk-In Bathtubs Installed · Senior Discounts · Permits

Free Estimates

CALL JOHNNY

Insured

Master License
16312



713-256-0017



30 Years Serving Bellaire, West University, SW Houston

MENTION THIS AD AND RECEIVE \$20 OFF ANY SERVICE



* 2021 * Happy New Year * 2021 * Happy New Year * 2021 * Happy New Year * 2021 * Happy New Year * 2021 * Happy New Year * 2021 *

COLDWELL BANKER

UNITED, REALTORS®

Buy, Sell
or Lease

Tony & Charlsej Porcarello

*** Westbury Area Specialist & Top Producers ***

Tony: 713-898-1546 - tporcarello@yahoo.com

www.porcarello.com

We Know Westbury and Call it Home for 42 Years!!!



6038 Lymbar Drive
* Coming Soon *



11406 Braewick Drive
\$238,000.



5914 Dryad Drive
\$230,000.

Houston Association of Realtors (HAR) Market Update 12/20. The single-family home average price climbed 15.0 % to an historic high of \$341,765 while the median price increased 12.0 % to \$270,000 – the 2nd highest level of all time. Year-to-date sales are currently 9.0 % ahead of 2019's record pace.

Please Call Us for a NO Obligation Consultation on Your Home Today!

We LOVE Westbury!

* 2021 * Happy New Year * 2021 * Happy New Year * 2021 * Happy New Year * 2021 * Happy New Year * 2021 * Happy New Year * 2021 *