



# Westbury Crier

VOLUME 64, ISSUE 1

JANUARY 2019

Thank you to everyone who paid their 2018 Dues. Westbury needs EVERYONE to pay their dues. The WCC can't function without YOU! A safe, secure, nice place to live is what we all want. Your financial support helps to keep the Westbury Civic Club up and running and is the main reason that Westbury has been listed as one of the top neighborhoods in Houston. Westbury would be a very different neighborhood if it weren't for the residents who pay their annual dues and volunteer their time.

The Westbury Civic Club Dues are just \$50. To learn all the great benefits of paying your WCC dues, see page 16.

The Westbury Area Patrol (WAP) puts certified police officers in our neighborhood and on our streets. Their visibility (even if you think you do not see them, the criminals know they are around) coupled with their quick response time makes them an invaluable component of neighborhood safety. We ask that each household also contribute \$285 towards the Westbury Area Patrol. Read more about the Westbury Area Patrol on page 16

## Join the Westbury Civic Club TODAY!

Please send this form in with your payment

### 2019 Westbury Civic Club Dues

Name(s) \_\_\_\_\_  
 Address \_\_\_\_\_  
 Home Phone \_\_\_\_\_ Work \_\_\_\_\_ Cell \_\_\_\_\_  
 E-mail \_\_\_\_\_

**Make checks payable to:**  
**Westbury Civic Club, Inc.**

Mail to:

P.O. Box 975182  
 Dallas, TX 75397-5182

Online payment:

[paypal.com](https://www.paypal.com)—Send Money to  
[westburycc@sbcglobal.net](mailto:westburycc@sbcglobal.net)  
 Make sure to include your address

#### Want to send your support in multiple payments?

You may choose any amount to pay in any increment throughout the year.

Here are a few examples:

- 2 payments of \$167.50 is \$335/yr
- 3 payments of \$111.67 is \$335/yr
- 4 payments of \$83.75 is \$335/yr
- 5 payments of \$67 is \$335/yr

Westbury Civic Club Dues	\$50	\$
Westbury Area Patrol	\$285	\$
<b>Subtotal</b>	<b>\$335</b>	\$
<b>Additional Contributions:</b>		
Westbury Civic Club		\$
Westbury Area Patrol		\$
<b>Total</b>		\$

**Thank you for supporting the Westbury Civic Club and our important programs. We can't do it without you! To contact the WCC Office, call 713-723-5437 or email [westburycc@sbcglobal.net](mailto:westburycc@sbcglobal.net).**

*By filling out this form, you are giving the WCC permission to send you communications. We DO not sell your information or give it out to other entities.*

**Please fill out a membership form and write a check to the WCC today! The total dues of \$335 (just 92 cents per day) protects the value of your home and the safety of your family. Payment plans are possible.**

## SPECIAL TRASH FEATURE

ON PAGES 8 -10



- ⇒ What is the difference between Junk Waste, Tree Waste, and Yard Waste?
- ⇒ Where are the city's recycling centers?
- ⇒ When is heavy trash pick up?

**CHECK OUT PAGES 8, 9, & 10 FOR ALL THE ANSWERS AND MORE!**



## HEAVY TRASH SCHEDULE

**January—TREE WASTE ONLY**

➡ Thursday, January 10

**February—JUNK WASTE**

➡ Thursday, February 14

**March—TREE WASTE ONLY**

➡ Thursday, March 14

**DO NOT PLACE TRASH ON CURB UNTIL WEEKEND BEFORE HEAVY TRASH DAY**

# IMPORTANT CONTACTS

## WCC OFFICE \*NEW ADDRESS

5322 W. Bellfort #100, Houston, TX 77035

Jennifer Edmondson.....WCC Office Manager

NOTARY SERVICE IS AVAILABLE TO DUES PAYING

WESTBURY RESIDENTS during office hours or by appt.

## CONTACT US

**WCC Office Hours:** Monday- Thursday, 9:30AM-2PM

*Closed Friday, Saturday, Sunday, and holidays*

WCC Office Telephone.....713-723-5437

WCC Office Email.....westburycc@sbcglobal.net

Deed Restrictions.....westburycc@sbcglobal.net

WCC President.....wccpresident@westburycrier.com

**Visit our website at [www.westburycrier.com](http://www.westburycrier.com)**

**“Like” us on Facebook at Westbury Houston**

## SECURITY

**Pct. 5 Constables (WAP).....281-463-6666**

*Report property crimes, suspicious activity, and vacation watch*

Emergency.....911

Houston Police Dept. Non-Emergency..... 713-884-3131

Southwest HPD Station .....832-394-0400

## CITY OF HOUSTON

District K CM, Martha Castex-Tatum..... 832-393-3016

District C Council Member, Ellen Cohen.....832-393-3004

Deed Restriction Enforcement (City Legal).....832-393-6333

Platou Community Center.....713-726-7107

Meyer Library.....832-393-1840

Mayor’s Citizen Assistance Office.....832-393-0955

**Houston Help & Information.....311**

*For missed garbage pickup, water line breaks, potholes sewer repairs, dead animals, traffic signals, heavy trash violations, neighborhood nuisances, and other city services*

## CENTERPOINT ENERGY

Electric outage.....713-207-2222

Suspected natural gas leak.....713-659-2111

Street light repairs.....713-207-2222

*Make sure to give pole number*

## OTHER IMPORTANT CONTACTS

County Commissioner Rodney Ellis.....713-755-6111

Graffiti.....www.braysoaksmd.org

Shopping Cart Removal.....www.braysoaksmd.org

*Brays Oaks Mgmt. District - Use “report a problem” link*

Poison Control.....1-800-764-7661

Harris County Tax office.....713-368-2000

Harris County Appraisal District.....713-957-7800

# 2019 WCC BOARD OF DIRECTORS

Contact the Westbury Civic Club at 713-723-5437 or westburycc@sbcglobal.net.

## EXECUTIVE BOARD

President.....Cindy Chapman

wccpresident@westburycrier.com

Vice President.....Marcia Hartman

Secretary.....Dan Vega

Treasurer.....Becky Edmondson

## DIRECTORS AT LARGE

Communications.....Katherine Wingfield

**Community Relations.....VACANT**

**Deed Restrictions..... VACANT**

Flood Control & Infrastructure.....Jennifer Edmondson

Greenspace Beautification.....Mat Funk

Membership.....Jeff Benavides

**Security.....VACANT**

Volunteer Coordinator.....Robert Ellis-Montgomery

## SECTION DIRECTORS

Westbury 1.....Franny Oxford

Westbury 2.....Susan Brock

Westbury 3.....Tony Robert

**Westbury 3.....VACANT**

Westbury 4.....Eugene Sirls

Westbury 4.....Gail Reaben

Westbury 5.....Virginia Livingston

Westbury 5.....Donna Strom

Westbury South.....Brandon Richard

Parkwest 1.....Angie Furnari

Parkwest 2.....Jeffrey Weiss

Parkwest 3.....Lisa Placke

## NEWSLETTER INFORMATION

Published by.....Westbury Civic Club, Inc.

Editor-In-Chief..... Jennifer Edmondson

Edited by.....WCC Publication Committee

Advertising..... 713-723-5437/ westburycc@sbcglobal.net

**Ad Disclaimer:** The WCC neither represents nor endorses an advertisement in the newsletter. Perform your own due diligence before contacting any advertiser.



Westbury Civic Club , Inc.

## *A Message from the Westbury Civic Club President*

Happy New Year! May each and every day of 2019 bring you joy, happiness, and prosperity.

I am so grateful for everyone who planned, organized, and assisted the many activities which made this past December special for so many of us in Westbury. Let's start by talking about the parade. For 20 years, the Mandell family has organized a neighborhood parade which winds its way through the Westbury streets in Westbury 3. This year the Deck the Halls parade was absolutely astonishing as hundreds participated and thousands lined the streets! Your very own WCC led the parade after the entrance flags by Westbury High School Air Force ROTC. We have lots of photos from the parade in this newsletter for you to enjoy on page 20. Thank you, Mandell Family!

As we begin the new year, reducing flooding risk and updating city Infrastructure continue to be high priorities for the Westbury Civic Club in 2019. The Westbury Civic Club will continue to advocate for projects by the Harris County Flood Control District to reduce flooding risk in Westbury. Harris County voters approved a bond for \$1 Billion dollars in 2018 to implement projects to reduce risk of flooding across the county and we want projects that will improve the Willow Waterhole bayou IN WESTBURY. Harris County Flood Control District has finished the connections for the Willow Waterhole detention project, and you will read more about how the system works and how it affects bayou levels here in Westbury on page 12.

After three consecutive years of floods in 2015, 2016, and 2017, it is a huge relief that we did not have any flooding of Westbury homes in 2018! We did have a scare both in July and again on Halloween

with high rates of rain falling in a short period of time which caused street flooding and damage to vehicles in the city streets. Keep in mind that the City of Houston designs our streets to hold additional water during heavy rains. However, our CITY infrastructure is aged and inadequate and we will continue to push the city to implement capital projects to update our streets and storm water drainage systems. Westbury has a ReBuild Houston project on the books that was scheduled for 2020 for a storm drain reconstruction project but unfortunately that project has been delayed a year due to Harvey.

Feeling safe is important, and although our neighborhood has low crime in general, we all want to feel safe. Having the Precinct 5 Westbury Area Patrol, that has been patrolling Westbury since 1984 is of major importance. Your prompt contribution toward our paid security patrol is vital. We've mailed you a dues form and it is here on page 1 and again on page 19. Our 2019 budget will decrease from 4 to 3 constables unless we get strong financial support by February 15. For a community of our size, we have been advised that SIX constables is a goal to strive for. We could be in danger of losing the constable program all together if participation in this great program does not increase. So please mail in your dues form now, and if you have not already done so, please save the contact information for the Precinct 5 Constables to your phone right now: 281.463.6666.

Instead of a board meeting in December, the Westbury Civic Club gets together with community partners and volunteers to celebrate the holiday season. This year, District K Councilmember Martha Castex-Tatum and HISD Trustee Wanda Adams were able to join us. We thank our elected officials for their efforts and assistance,

and it makes a huge difference when we contact our elected officials with issues and they know who we are.

I am looking forward to 2019. Working together, we can continue to keep Westbury as the friendliest, best neighborhood around town. Tell your friends and co-workers that you live in Westbury and that you like living here. Here in the big City of Houston, Westbury has a special, unique sense of community that is uncommon and is highly desired. By now, all Westbury homeowners should have received your 2019 assessments or dues letters (depending on where your home is located). Your prompt payment is appreciated and is essential to support the work and services that you deserve as a Westbury homeowner.

Happy New Year and have a great 2019!  
Cindy Chapman



*WCC President Cindy Chapman with husband Walter Chapman at the Westbury Deck the Halls parade*

### **WCC Board Meeting Notes**

- No WCC Meeting in December
- The next WCC Board meeting will be January 16, 2019, at 7PM at Westbury Baptist. Meet and Greet 6:30PM, Meeting 7PM
- Vacant WCC Board positions are: Community Relations, Deed Restrictions, Security, and Westbury 3 Director.

### **WCC Board Meeting**

**Wed., January 16, 7PM**  
**Westbury Baptist, 10425 Hillcroft**





# Platou Community Center at Chimney Rock Park

11655 Chimney Rock Rd ♦ 713-726-7107 ♦ [platou@houstontx.gov](mailto:platou@houstontx.gov)



## NEW Aerobics Class

**Tuesdays & Thursdays, 6-7PM**

Free Evening Aerobics Class will be held on Tuesdays and Thursdays starting Tuesday, January 8, from 6 to 7 p.m. Call 713-726-7107 to register with the class leader Synedia.



**Platou CLOSED January 21**

## Weekly Classes/Groups

### Stretching Exercise Class

**Monday, Wednesday, Friday - 9-9:45AM**

Improve flexibility in a non-strenuous exercise class.

### Ms. BeeHaven Quilters

**Tuesday, 10AM - 2PM**

Contact Janie at 713-721-5526

### Table Games

**Wednesday, 10AM - 12:30PM**

Take a chance at Dominoes, Card Games, and more!

### Table Tennis

**Wednesday, 4-8PM**

Open Adult and Teen Ping Pong/Table Tennis will be available with Mr. Nelson

### Interested in new classes/groups?

Call the Platou Center at 713-726-7107 or email [platou@houstontx.gov](mailto:platou@houstontx.gov) if you want to form a craft class, play bridge, hold a meeting, etc. New classes are always welcome and needed. All classes are free and led by volunteers. The center will be open until 8PM Monday through Thursday.

## Help the Platou Center

### Working Portable Sewing Machines Wanted

If you have a functional portable sewing machine that you would like to donate to Platou Community Center, we would love to have it. Call Synedia at 713-726-7107.

### Knitting/Crochet Teacher Needed

We get lots of inquiries from people who want to learn to knit. If anyone would be willing to conduct a class to teach Beginner Knitting or Crochet, please call Synedia at 713-726-7107.

## Platou Holiday Potluck

On December 12, the Platou Center held its Annual Holiday Potluck lunch and White Elephant gift exchange. Many residents of Westbury who participate in classes at the Platou center attended this annual event. It was a great fun for all who came. Toys were collected and taken to Weichert Realtors for Toys for Tots.



## Meyer Library News

### ➔ Meyer Library CLOSED Indefinitely

The Meyer Library has long been on the City's replacement list and after minor flooding in Harvey, the decision was made to not re-open Meyer Library. The City recently approved \$1.2 Million to purchase land in Westbury for a new Meyer Library. The new location would be at the site of the old Post Office in Westbury on Belrose.

### "Mini" Meyer Library at Godwin Community Center

A "mini" Meyer Library is now open in Meyerland at the Godwin Community Center at 5101 Rutherglenn next to Kolter Elementary. Limited Services. Staff can be reached at 832-393-1840.

#### Hours of operation:

Mon-Wed: 1:00PM-6:00PM

Thurs: 1:00PM-8:00PM

Fri: 1:00PM-5:00PM



# What's Happening in Westbury

## January 2019 Calendar Events/Meetings

Jan 1-2	WCC Office Closed—Happy New Year!	
Mon. 7	HISD resumes school	
Wed 16	WAIC/Super Neighborhood #37 Meeting St John's Presbyterian - 5020 W Bellfort	9:30AM
Wed 16	WCC Board Meeting Westbury Baptist - 10425 Hillcroft	7PM
Sat. 19	Audubon Society Bird Survey Gathering Place—5310 S. Willow	8AM
Mon 21	Brays Bayou Association Meeting Willow Meadows Baptist Church, 4300 W Bellfort	7:30PM
Mon 21	WCC Office Closed—Martin Luther King Jr. Day	
Tues 22	SW PIP Meeting SW HPD Station - 13097 Nitida	7PM

## Planning Calendar

- ★ Back the Blue 5K Race—February 9
- ★ Parker Elementary Grand Opening  
February 28
- ★ Houston Livestock Show and Rodeo  
Feb. 25—March 17
- ★ HISD Spring Break— March 11-15



## TRASH SCHEDULE



### Recycling in Westbury

All of Westbury recycles on Schedule A. Recycling is every other week. Recycling goes into the green trash can.

**January 2019**

**February 2019**

Thursday, January 3

Thursday, February 14

Thursday, January 17

Thursday, February 28

Thursday, January 31

## Heavy Trash Schedule

All of Westbury is on the same schedule for Heavy Trash. Pick-up is on the 2nd Thursday of every month. Odd months are TREE WASTE ONLY and even months are JUNK WASTE months.

**January 2019**

**February 2019**

**TREE WASTE ONLY**

**JUNK WASTE**

Thursday, January 10

Thursday, February 14

## Important Trash & Recycling Info



- ♻️ Regular trash pickup is every Thursday. Recycling is every other Thursday. Heavy Trash is once a month, 2nd Thursday.
- ♻️ Westbury is on Recycle Schedule A
- ♻️ NO Glass in the green recycling bins
- ♻️ NO Plastic Bags in green recycling bins
- ♻️ Trash cans need to be on curb by 7AM each Thursday
- ♻️ Trash cans must be removed by 10PM each Thursday
- ♻️ Trash cans must be placed at least 3 feet apart
- ♻️ Trash cans must be stored out of sight.
- ♻️ Yard waste MUST be in correct biodegradable bags
- ♻️ Call 311 for all trash questions and complaints
- ♻️ Nearby Trash Depositories and Recycling Centers: **SW Trash Depository/Recycling Ctr**  
10785 SW Frwy / Hours: Wed.—Sun. 9AM to 6PM; Accepts Junk Waste, Tree Waste & Recyclables.
- ♻️ **Environmental Service Center** - 11500 S. Post Oak  
Hours: Tues/Wed 9AM-3PM; 2nd Sat 9AM-1PM. Accepts Hazardous Household & Electronic Waste.
- ♻️ GLASS: May be recycled at Westbury United Methodist, 5200 Willowbend, in the orange container near W. Bellfort.
- ♻️ Refer to [www.westburycrier.com](http://www.westburycrier.com) or [www.houstontx.gov](http://www.houstontx.gov) for more trash and recycling information

# 2018 WCC Accomplishments & Highlights

## Support for Our Residents

The WCC office handles thousands of calls and emails from residents each year, and many problems were resolved by working with the District K City Council Office, the Department of Neighborhoods, HISD and the Solid Waste Department. 2018 has been an especially challenging year for trash pickup and the WCC office has been working one on one with the Solid Waste Department to get broken cans replaced. Hurricane Harvey put a huge strain on this department when they had to pick up 2 to 5 years of heavy debris over a 3 to 5 month period. This has accelerated the deterioration of their fleet and they are looking forward to 90 new vehicles coming into service soon. In the meantime they ask our patience in the delays of recycling and heavy trash pickup. We sponsored two successful White Elephant Community Garage Sale events. We sponsor a Yard of the Month program, organize Keep Westbury Beautiful cleanup activities, and sponsor Neighborhood Night Out in October.

## Communications

### Westbury Crier

Since July 1956, the WCC has produced its monthly newsletter, the Westbury Crier, now a 24 page, full-color newsletter paid for primarily by advertising. Our award-winning newsletter is delivered by the Westbury High School baseball and softball teams directly to the doorsteps of residents.

### Social Media

The Westbury Houston Facebook page has gained another 300 followers and is now followed by 2,659 people. We communicate with our residents through our website, Facebook, and our monthly newsletter.

## Security

Having a safe neighborhood is a number one priority. As a community, we can help each other stay safer by knowing who our neighbors are and by paying attention to odd or unusual situations. To this end the WCC supports the National Night Out events in October. Cindy Chapman and Becky Edmondson visited 9 of the 11 registered parties. The WCC continues to work closely with the Houston Police Department and members attend the monthly PIP meetings and stay in contact with the officers who were once assigned to the now closed Westbury HPD Storefront. The WCC contracts with Harris County Precinct 5 Constable to provide the Westbury Area Patrol (WAP),

whom we hire by paid contract to patrol and to respond to resident calls with licensed law enforcement officers. The WAP sergeant coordinates with the WCC to oversee the program. The Constables identified and detained a crew of juveniles who were robbing and terrorizing residents in Westbury South. More than just a patrol service, Pct. 5 has undercover and investigation divisions that go to work for us when situations like those in Westbury South arise.

## Advocacy

We strongly advocate on behalf of all of Westbury! We work closely with elected officials and with city departments. One of the big accomplishments for 2018 was getting the city to purchase land in Westbury for a future city library. We began this advocacy for a good location in Westbury with Larry Green 3 years ago after the Meyer branch was damaged. We continue to advocate to keep projects on schedule to replace storm water drainage piping across Westbury. At the State level, both Senator Miles and Representative Thierry keep in touch and are aware of the issues we face. At the City level, we work closely with our CM Martha Castex-Tatum as well as the at large council members, the Flood Czar Costello and Mayor Turner. At the County level, we worked closely with Harris County Precinct One on their park vision initiative.

## Flooding and Infrastructure

The WCC has devoted much effort into understanding the causes of flooding in Westbury and advocating for real changes to reduce the risk of flooding along Willow Waterhole Bayou and flooding due to inadequate street drainage. Flooding and infrastructure continue to be key concerns for advocacy. The WCC spoke at city council several times on the topic of flooding in Westbury and proposed city development regulations. When residents couldn't get any relief for a clogged storm drain on Creekbend, the WCC stepped in, produced a map of where we thought the blockage was and worked directly with Public Works to get the problem fixed. When the City needed a place to kick off their new Adopt a Drain program, Westbury provided a corner and many residents in Westbury have adopted their drains. While Harris County Flood Control was working along the easement between Westbury 1 and 3, the WCC interceded on the behalf of several residents who were worried about the work being done.

## Service

In addition to serving on the WCC board, WCC board members serve on other important boards such as the Westbury SuperNeighborhood, the Westbury Area Improvement Corporation, the Westbury Community Garden, the Friends of Westbury High School Foundation, the Willow Waterhole Conservancy, Friends of Levitt Pavilion Houston, SWHouston2000, the Brays Oaks Management District, the Brays Bayou Association, the Houston Clean City Commission, and the Super Neighborhood Alliance. We work at the county, state and federal levels, too.

## WCC Awards

The Westbury Civic Club won a prestigious Mayor's Proud Partner Award from Keep Houston Beautiful for the 2018 Keep Westbury Beautiful day. September 11 was proclaimed Becky Edmondson day in recognition of her eight years of service as President of the WCC.

## Commercial Properties

The WCC monitors commercial properties and works with the property owners or the city when problems occur. The WCC provided comments regarding the Planning Department applications for cell towers near the Westbury Fire Department and near the Westbury Community Garden. Both towers were approved. The WCC met and discussed the development plans for the vacant land north of South Willow at South Post Oak. The Planning Department did not approve the proposed plan.

## Schools

### Parker Elementary

When the new traffic lights at the corner of Willowbend and Atwell near Parker Elementary were installed but never turned on, the WCC was finally able to get them turned on after a delay of almost 2 years. Members of the WCC served on the Parker Project advisory team and finally at Spring Break 2018 the new school was opened. The Parker Elementary official dedication will take place February 28, 2019. After inquiries by the WCC, the November 2018 elections were moved back to Parker Elementary after 3 years of voting elsewhere during school construction. The September WCC Annual meeting was held at the state-of-the-art, beautiful, new, Parker auditorium.



## 2018 WCC Accomplishments & Highlights

### Westbury High (WHS)

The WCC continues to work closely with WHS. We provided comments on the preliminary plans for the new Westbury High School Fine Arts Wing. A new mentoring program is starting and the WCC is helping recruit mentors.

### Anderson Elementary

When HISD opened a bus depot at Anderson for magnet students, the WCC was on the phone to our Trustee Wanda Adams immediately. Imagine 40 school busses coming in the morning and again in the afternoon all in addition to the regular Anderson bus and parent traffic. Thankfully, HISD added two more hubs (one in Westbury at Parker Elementary) dropping the number of busses to 15.

### Other Good News

#### New Westbury Library Coming

After years of working with Larry Green to find a suitable place for the new District K library, the City has purchased the "old post office" site on Belrose in Westbury to replace the closed and damaged Meyer Library on West Bellfort. This site has direct access to Chimney Rock and is within walking distance to the Platou Community Center, Westbury High School, Anderson Elementary, and many homes and apartments. The new City library will be very convenient for all of us.



Westbury Civic Club, Inc.

### Hager Park

After years of advocating for improvements, funds have been allocated in the 2017 City Park Bond to improve Hager Park. We look forward to working with the City on future plans. All pending Capital Improvement Projects such as the Hager Park renovation have been pushed back a year due to Hurricane Harvey.

### Westbury Park

Located next to Parker Elementary, this park is well loved by many kids. Westbury Park was the site of the 2018 Keep Westbury Beautiful Day. The WCC won the Mayor's Proud Partner award for our work at the park. Volunteers planted 2 trees, cleaned and mulched the butterfly garden, added new flowers to the butterfly garden, and did a trash pick-up. District K had new artwork installed at the tennis courts of children playing.

### Esplanades

The Brays Oaks Management District has started maintaining the esplanades in the commercial intersection of Chimney Rock and West Bellfort. The WCC is seeking bids to clean the Westbury landmark signs and to maintain the WCC landscaping beds. The WCC works with the WHS ROTC to post flags on Westbury esplanades for certain federal flag events, although theft of flags has continued to be a challenge.

### Community Partners

#### Westbury Community Garden

The garden is a project of our 501c3 nonprofit partner, the Westbury Area

Improvement Corporation (WAIC). The Westbury garden won an award in 2018 for their VegOut nutrition event. It continues to partner with the Houston Health Museum and to connect to the community with events (Star Gazing Party, Tomato Tasting, Volunteer Days, Deck The Halls parade) while working to implement the garden Master Plan and "growing community through gardening".

### Platou Community Center

The Friends of Chimney Rock Park, a 501c3 nonprofit, successfully raised funds in 2018 for new benches and picnic tables near the park playground, which will be installed soon. The Friends hosted Family Fun Days during the year and provided extra enrichment activities for children during the summer months. They connected to the community with classes, potlucks, and special events (Heritage Stitchery Show).

### Willow Waterhole

The 6th Annual MusicFest was a great success. Many Eagle Scout Boy Scout projects were completed in 2019 – including new trees planted, new benches installed, trails built, and signage added. Guided walking tours have been created and will be held periodically again in 2019. Many families took advantage of the bluebonnets blooming on the banks of the detention lakes this spring. The lakes are stocked with fish provided by Texas Parks and Wildlife. The Willow Waterhole continues to be popular with hikers and cyclists. It is a popular site for middle and high school cross country events.



# GREAT WESTBURY HOMES

ALL SHARE THE SAME ADDRESS.

**BROCKANDFOSTER.COM**



**Susan Brock, Broker. Neighborhood Expert. Top 20 Agent under 40. Top 500 Agent in Houston. 5 Star Client Experience Rating. Master Certified Negotiation Expert.**

**BROCK and FOSTER**  
*> Real Estate*

# All About Trash

Special Edition

## HEAVY TRASH Explained!

The City of Houston provides residents with FREE curbside monthly heavy trash collection, alternating “TREE WASTE” collection months with “JUNK WASTE” collection months. The collection cycle is the same every year, as shown below. **ALL of Westbury is picked up on the 2nd Thursday of each month.**

Heavy Trash can be placed on the curb starting the Saturday before the scheduled collection date. Do not place heavy trash on the curb early. Not only is it a violation of city ordinance but it is ugly and no one wants to look at their neighbor’s trash for weeks on end.

TREE WASTE	JUNK WASTE
January	February
March	April
May	June
July	August
September	October
November	December

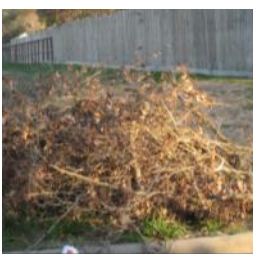
### What is “Junk Waste”?

“Junk Waste” includes furniture, appliances, lumber, fencing, and other bulky items (including tree waste, but the tree waste would then be sent to landfill rather than mulched). **The city will NOT collect bagged yard waste placed in improper bags during a Junk Waste month.**



### What is “Tree Waste”?

“Tree Waste” consists of tree limbs, shrubby limbs, or branches of trees and shrubs. If the Tree Waste has other types of materials mixed in with it, then it is no longer Tree Waste. Lumber, fencing and similar materials are NOT considered Tree Waste. During a Tree Waste month, only Tree Waste materials will be collected.



### What is “Yard Waste”?

“Yard Waste” consists of leaves, grass clippings, small yard trimmings or branches. **Yard Waste must be in a city-approved bag**, or small branches bundled (tied) into a pile less than 4 feet long, less than 18 inches in diameter, and less than 50 pounds in weight. “Yard Waste” is picked up every Thursday.



## Westbury Trash Dates

**Every Thursday** is regular trash pick-up in the black rolling can

**Every Thursday** is yard waste pick-up, only collected if bag correctly (see below)

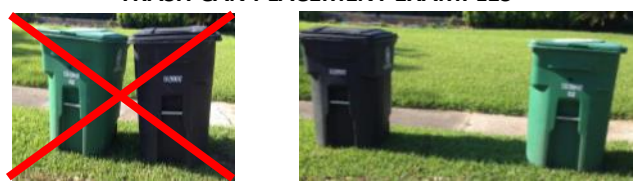
**Every other Thursday** is recycling in the green rolling can

**2nd Thursday of every month** is Heavy Trash. Odd months are TREE WASTE ONLY and even months are JUNK WASTE

## Trash Can Placement

Household garbage must be put inside the city-provided container which should be placed at the curb between 6PM Wednesday evening and 7AM Thursday morning. The container must be accessible to the automated collection truck and not blocked by obstacles, including parked cars. Homeowners with multiple trashcans **MUST** place trashcans three (3) feet apart. Do not place cans next to light poles or trees. The city has started tagging cans that are placed incorrectly. Homes on corners must place their trash cans on the front street (not side). Trash cans must be removed from the curb by 10PM Thursday.

### TRASH CAN PLACEMENT EXAMPLES



**Too much trash this week?** Buy “tags for bags” from Fiesta, HEB and participating Kroger stores to get your tags for your extra bags of trash picked up. Cost is \$ 2 per tag, plus tax.

**What goes in the large green bin?** Recyclables such as steel or aluminum cans. Paper. Certain plastics, not # 6. Glass IS NOT allowed in the large recyclable bins. Recycling is picked up every other Thursday.

**Where can I recycle glass?** Glass can be recycled at Westbury United Methodist off W. Bellfort in the glass recycling bin provided by the City.

**What goes in the large black trash bins?** Household garbage such as personal trash and food waste are to be placed in the large black trash bins. Household garbage day is Thursday. No yard waste, dead animals, household hazardous waste, or electronics are allowed.

### Trash Reminder App

The City of Houston Solid Waste Department has a free app for smartphone users, Rollout! It is available for Androids and iPhones. Insert your address, set reminders and never forget when trash day is! The app will send notifications to your phone to remind you when to recycle trash, regular trash and even heavy trash.



## Trash Problems

**Broken or missing trash or recycling can**— Please report to the City of Houston via 311. The City will provide you a Service Number (SR) to track your request. Once you have reported your broken or missing can, call the WCC office to help expedite the request. Typically the City allows for 2 weeks for this type of request. However, they are very behind on this type of call. If your request is past due, please contact the WCC office. We can typically get a better response via our Solid Waste contact.

**Late/Skipped Pick-Up**— Leave the trash at the curb. Report to 311. The trash pick-up has been very challenged since Harvey. Recycling is often a day or two late, as is Heavy Trash. The delays are due to old trucks and lack of drivers. Please be patient with the City but if your trash is not picked up on the scheduled day, please report to 311 and leave it on the curb as it likely coming soon!



## Environmental Service Center – South 11500 South Post Oak - between Gasmer and South Main Recycle and Household Hazardous Waste

Various household hazardous waste is accepted such as anti-freeze, fuel, oil, paint, paint thinner, pesticides, herbicides and household cleaners. Residential electronic scrap items will also be accepted (monitors, televisions, printers, keyboards, mice, scanners, fax machines, telephone handsets, VCRs, CPUs, cellular phones and other small consumer electronics). These items should not be placed on the curb with or in your container for collection with garbage or heavy trash pick-up. **The center is open every Tues. and Wed. from 9AM to 3PM and the 2nd Saturday of the month from 9 AM- 1 PM.**



Items that can be taken to the Environmental Service Center

### Reuse Chemical Take Away (FREE)

The City of Houston's Environmental Service Center South offers free paint and household chemicals. Located at **11500 South Post Oak Road**, the Center is open for reuse chemical distribution on **Fridays from 9AM to Noon**. First come, first served.

### ReStore (Craft Items, Books, Post Consumer & Industrial Scrap - FREE)

The ReStore, which acts as a book swap, recycling info library, as well as a repository for craft items and post consumer and post industrial scrap ( useful for art projects). Located at **11500 South Post Oak**, items can be taken away from **9AM - Noon every Friday** during the Reuse Chemical Take-Away.

## Holiday Do NOT Recycle List

Here are some of the holiday items that should NOT be placed in your recycle bins. Either they are not processed at our city recycle centers, or they wrap around the machinery and create processing problems.

- ⇒ **No Holiday lights**
- ⇒ **No gift wrapping paper, ribbons, trim, and bows**
- ⇒ **No Yard inflatables**
- ⇒ **No Clothing (including Ugly holiday sweaters)**
- ⇒ **No Batteries. (Note. Put alkaline batteries in the trash. Take rechargeable batteries to the local Environmental Service Centers at either S. Post Oak or Westpark)**



Visit [rorr.com](http://rorr.com) or follow Waste Management on Twitter @WasteManagement to learn more about what should and should not go in your recycle bin.

# All About Trash

Special Edition

## Southwest Neighborhood Depository & Recycling Center (for Heavy Trash Drop-off)

**10785 Southwest Freeway Houston, TX 77074**  
**Phone: 713.541.1953**

This facility accepts Junk Waste, Tree Waste and Recyclables at no additional charge to City of Houston residents. Citizens may use the depositories four times per month. You must provide a Texas Driver's License or ID and a current utility bill or city property tax receipt. **The depositories will also accept the following items:** Furniture, Tree limbs, Stoves, Refrigerators, etc., 10 auto tires (Rims Not Accepted)  
**Open Wednesday - Sunday, 9AM to 6PM.**

## Westpark Recycling Center

**5900 Westpark**

This facility is a drive through operation so you do not have to unload your vehicle.

**The center accepts:** aluminum and tin cans, oil filters, used tires, computers, #1-7 plastic containers, GLASS bottles and jars, telephone books, office paper, cardboard, magazines, and used motor oil. Newspapers placed in a brown bag will also be accepted.

**Open Monday– Saturday from 8AM to 5PM.**

## Reuse Warehouse

**9003 N. Main St.**

The facility accepts material from individuals, supply companies, and builders, and makes it freely available for reuse by any non-profit organization.

**Open Tuesday thru Friday from 8:30AM to 4:30PM and every 2nd and 4th Saturday of the month from 8:30AM to 4:30PM**

## Trash Violations

Violation of any provision of the solid waste ordinance is punishable upon first conviction by a fine of no less than \$50 nor more than \$2,000. Each subsequent conviction is punishable by a fine of no less than \$250 nor more than \$2,000. Each day that any violation continues may be punishable as a separate offense. **To report a violation or to file a complaint, call 311.** Solid Waste Management Department Supervisors can write citations.

## CHRISTMAS TREE RECYLING

The City Of Houston will pick up Christmas trees from the curb in January on Heavy Trash Tree Waste Day, January 10.



The trees must have all decorations, ornaments, tinsel, lights and stands removed. Flocked trees cannot be recycled. Christmas trees may also be dropped off at the Westpark facility as well as the Southwest depository.



**RECYCLE OFTEN.  
RECYCLE RIGHT.**

## Can We Talk Trash?

Can we talk trash? Diane Humes, from the Galveston Bay Master Naturalists, recently wrote an intriguing article about trash. Our planet is surrounded by trash - artificial objects orbiting Earth created during 50+ years of space exploration. A list of space debris items as of July 2016 includes pliers, cameras, a wrench, broken satellites, and 1419 operational satellites. Trackable by radar, there are 17,852 items in space around our Earth, not including about an estimated 170 million items that are smaller than one cm. Our oceans, too, are filled with mostly plastic trash, which is a large threat to wildlife and to our health. And, here on land, we have 327 million people in the USA, all with far more stuff to discard than our ancestors, and luckily more methods to choose from to handle our trash.

It's January and time for resolutions. Won't you pledge to be a better recycler? It can't get much easier than having a dedicated bin where you don't even have to separate your paper from your plastic or your cans. Coca-Cola has pledged to recycle an equivalent amount of product equal to their packing. Did you know 75% of their products (1.9 billion items a day) are consumed at home? Keep Houston Beautiful is administering a grant to increase recycling in some low performing zip codes. Westbury's 77035 and 77096 are not low performers, but there is room for improvement. Let's make Westbury the greenest neighborhood in Houston!

The good news is that the City will be getting new trash trucks soon, and we should see a big improvement in getting our trash picked up on time. In the meantime, be patient and call 311 if your cans are not serviced. Glass is not currently collected in your home green recycle bin, but you can take it to the convenient orange Glass Recycle bin at Westbury United Methodist Church (corner of West Bellfort and Willowbend, entrance to parking lot is via Cedarhurst) or to the city recycling center on Westpark.

## Broken Trash & Recycling Cans

If the City trash truck takes or damages your trash cans, please report it to 311. After you get your service number, call the WCC office to let us know the SR number so we can help expedite your trash can issue. This has proven to be very successful method for most residents.

Many residents have called the office in the past 2 months with their SR numbers for missing trash cans. Some have been calling the City since July! If you have reported a damaged or missing trash can to the City in the past several months but have not received a replacement can, please call 311 and re-report. Make sure to write down your Service Request (SR) number. Then call the WCC office with your SR number. In December, the average response time once the WCC emailed Solid Waste was under 4 hours! One resident even got their new can in less than one hour. The WCC is very pleased with this quick response. Please report all trash can problems to 311.

If you have called the WCC office in the past 2-3 months with your SR number but you still do not have a trash can, please call the WCC office and let Jennifer know. There was a short time frame that the City did not have cans in stock.



**Help Keep Westbury Beautiful by following all City trash ordinances!**

## BE A PART OF THE ST. THOMAS MORE PARISH SCHOOL EXPERIENCE

**NOW ACCEPTING APPLICATIONS FOR  
2019-2020 SCHOOL YEAR**

For an application and/or more information about STM,  
please visit our website [stthomasmore-school.org](http://stthomasmore-school.org)

Private tours can be arranged by calling the school office  
713.729.3434

- ◇ St. Thomas More Parish School is co-educational
- ◇ Grades Pre-K through 8th Grade
- ◇ Full Day and Half Day Pre-K Programs
- ◇ Before and After School Care Available
- ◇ Experience the Academic Discipline of STEM



5927 Wigton Dr. Houston 77096





# Proposed 2019 Westbury Civic Club Budget

## General Income

Mandatory/Assessments	85,000
Voluntary Dues	50,000
Donations Civic Club	2,000
Westbury Area Patrol Voluntary (Restricted)	217,500
Refinancing Fees	3,000
Transfer Fees	30,000
Resale Certificates	1,000
Interest Income	500
<b>Total General Income</b>	<b>389,000</b>

## Program Expenses

Crier Printing & Expenses	46,650
Crier Advertising Fees	-37,500
Community Garage Sale Expense	2,000
Community Garage Sale income	-2,000
Programs & Hospitality	500
Greenspace Monthly Maintenance Contract	15,000
Water, Plants, Supplies & Equipment	10,000
Harris County Constable Fees (all 4 deputies)	246,600
<b>Total Program Expenses</b>	<b>281,250</b>

## General Expenses

Books, Subscriptions, Dues	500
Postage, Mailing Service	3,000
Printing & Copying	2,500
Supplies	750
Training & Education	100
Contributions to Ext Orgs	0
Bank & Pay Pal Fees	5,500
Computer Expense	2,500
Insurance	7,000
Payroll Expenses	60,000
Contract Services - Accounting/Legal	7,500
Facilities and Equipment	18,150
Conferences & Meetings	250
<b>Total General Expenses</b>	<b>107,750</b>
<b>Total: Program + General Expenses</b>	<b>389,000</b>

The Westbury Civic Club (WCC) Budget Committee has prepared the 2019 Budget which will be presented to the board in January. This year's proposed budget will be similar to last year's budget, but with one **POTENTIAL** large change related to public safety (constable patrol program). The WCC operates on a calendar year budget. We estimate our income for the coming year (based on prior history), and then we budget proposed expenditures based on the projected income. This year our projected income and expense is \$389,000.

Our biggest expense is the Westbury Area Patrol (WAP) security control contract with the Precinct 5 constable office. The WAP Patrol had consisted of three deputies for years. In 2014, Pct 5 asked us to increase to 4 deputies. Historically we have not collected sufficient funds to cover the cost of a 4th deputy, which is why we had 3 deputies for years. The civic club has had to dip into our security patrol reserves to pay the added costs of that 4th deputy. The WAP Patrol contract increased 3% in 2018. We did not reduce to 3 deputies in 2018 and were able to cover the cost by depleting the patrol reserve fund we had built up over the last few years. With so much construction and empty homes due to Hurricane Harvey we felt it was important to keep the status quo. The proposed budget for 2019 is for three deputies. This still gives us coverage in the morning, afternoon and night shift. However, if we collect the additional \$81,000 needed to add another deputy then we will do so.

The \$389,000 income and expenses are projected as follows: **Westbury Area Patrol— \$246,660** 3 deputies **Greenspace— \$25,000** This is taking care of the areas the WCC has adopted and other areas that are not mowed frequently.

**WCC Operating Expenses —\$96,840** The General Expense category includes all of the items that go into operating the Civic Club printing and distribution of the *Crier*, operating an office and staffing it, insurance, professional fees (financial reviews, legal expenses), doing projects and programs, and deed restriction enforcement. Advertising in the monthly news-letter offsets its printing costs.

Year after year our income is about the same. However, if you consider that Westbury has 5,000 homes raising 389,000 should not be a difficult thing to do. We are thankful for those civic minded folks who every year pay their dues and protect their neighborhood. If you've never paid, won't you consider sending in at least \$50.00.



**foundationrepairplumbing.com**  
**713-695-4050**  
**FREE ESTIMATES**

CALL TODAY!!!

- Under-Slab Plumbing
- Tunnels
- Sewer Re-routes
- Hydrostatic Testing
- Foundation Repair

TRUST • INTEGRITY • HONESTY

PLUMBING  
FOUNDATION  
REPAIR

OVER  
**40**  
EXPERIENCE

UNDER-SLAB  
SEWER  
WATER PIPING




M PL-15997



# Weirs “Spillovers” on the Willow Waterhole Bayou

One of the biggest conversations in Houston these days is flooding. Every rain storm brings more worries. While Westbury saw no home flooding in 2018, we did have several storms that flooded neighborhood streets and stalled cars. These storms also brought the Willow Waterhole Bayou at Landsdowne to levels that make us very wary.

After 5 floods since 2013, residents who live near the Willow Waterhole Bayou in Westbury at Landsdowne know how the bayou operates when it starts to rain. The WCC monitors the gage levels online and also know how this bayou has historically acted. This all changed in 2018. The July 4th rain event alarmed area residents as the gage seemed to stop reporting the level accurately, it stayed stationary even though it was still pouring outside. Based on past events, homes would have flooded on Cartagena and Ludington. However, this was not the case in July. The WCC received pictures from residents that show the bayou was still within its banks; the gage was correct. The top of bank at Landsdowne is 54.20 ft. The gage showed 53.49 ft. for over an hour, despite an additional 1/2 inch rain in 45 mins.

Harris County Flood Control (HCFCD) attended the July WCC Board meeting to explain the changes to the bayou and the resulting effect on the gage. The WCC’s understanding is that the weirs “become active” when the water reaches approximately 52.5 ft at the weir. Upstream, at Landsdowne, where the gage is located, the elevation is one foot higher. This means that the bayou will reach almost the top of bank at Landsdowne before water will overtop the weirs downstream at the detention basins. This is how it is designed to work. This is when we expect to see the Landsdowne gage to stabilize and hold at a certain level between 53.24 ft. and 53.5 ft. (top of bank is 54.20 ft.)

The “Spillover” weirs along the bayou are now complete and seem to be operating as they were intended. During the July 4th rain, only one of the weirs was completed, but by the Halloween rain event, both weirs were operational. The rain on Halloween saw the bayou also plateau for 45 mins, this time it was 53.24 ft. Each of these rain events saw rapid rainfall in a very short period time that is hard for our old infrastructure to handle. Halloween saw 0.40 inches fall in 5 minutes! Nothing is designed to hold that rate of rain. This is why our neighborhood streets flooded so quickly and even in areas “that never flood.”

These 4 photos show some of the new features at the Willow Waterhole Bayou and detention basins. Photo 1 shows the new large culverts that are bringing the Bankside/Hummingbird bayou water from the Chimney Rock intersection to the Willow Waterhole Bayou. This photo also shows one of the weirs into the detention basin as well as the emergency/ secondary spillover that will allow water to overflow and re-enter the channel on other side of the “control structure” that is seen circled in red in photo 2. The control structure restricts the flow of water in the bayou. As water level rises in the channel, water will flow over the weirs and into the detention basins. Photo 3 shows the 2nd weir which is located along the Willow Waterhole Bayou directly behind the homes on Gaymoor in Westbury. This weir is located before the other one to the West. The basins are now all connected. One of the new connections is seen in Photo 4.

The WCC would like to get aerial pictures of this area, please contact the WCC Office if you have a drone and are willing to take some pictures for us!



**Locally Owned & Operated**  
**30 + Years of Experience**  
**Honest & Reliable**  
**FREE Estimate**  
excludes insurance estimates

\$500 COUPON OFF A \$5000 ORDER

**Bathroom REMODELING**  
**Kitchen REMODELING**  
**CALL 281-850-0795**  
*for Quotes & Estimates*

**SERVICES INCLUDE**

Painting • Staining • Refinishing • Repairs  
 Drywall • All Build Types • Interior & Exterior  
 Additions • Cabinets • Counters • Moldings  
 Flooring • Doors • Masonry Painting • Siding  
 Patios • Decks • Fences



# Governor's Commission Report to Rebuild Texas *Eye of the Storm*

Governor Greg Abbott appointed Texas A&M Chancellor John Sharp to lead the Governor's Commission to Rebuild Texas in the aftermath of Hurricane Harvey. Did you know that Chancellor Sharp toured the Westbury area while he was in Houston, shortly after the Harvey flooding, as part of the fact-finding mission for the committee?

The 177 page report has now been issued and is available online (search online for Rebuild Texas Hurricane Harvey Eye Of The Storm). Before the difficulties our communities faced because of Harvey fade from memory, it is critical that we examine what happened and how our preparation for and response to future disasters can be improved.

In this report, we try to create as clear a picture of Hurricane Harvey as possible. We document how the storm developed and how it affected our state. We also offer a frank assessment of the federal, state and local response and recommendations for how Texas can be better prepared to withstand future disasters. The report is both a record of a milestone event in the state's history and a guide to "future-proofing" our state to mitigate the impact of future Harveys.

The report is too long and too detailed to discuss extensively in this newsletter, but it is informative and useful to read. In particular, this comment is pertinent to flooding in our part of Houston.

**Ensure new development does not cause flood damage in adjacent or downstream properties.**

"For these reasons, development regulation in areas near flood and storm-surge zones should require a consideration of impacts on downstream communities, even if they lie outside the community's regulatory jurisdiction. For example: The Houston neighborhood of Meyerland is one of the state's most chronically flooded areas. Meyerland was built largely in the 1970s. Upstream development since has contributed to an expanding floodplain boundary as more runoff enters the local drainage system of Brays Bayou. In the 1980s, the mapped 100-year floodplain was confined to bankside areas; today, the floodplain encompasses the entire neighborhood, making it highly vulnerable to flooding during heavy rainfall."

For the complete report, go to: <https://www.rebuildtexas.today/legislative-report-on-hurricane-harvey/>

***Hurricane Harvey was an inestimable tragedy for many Texans, but the lessons it taught us should not be forgotten or ignored. -John Sharp***



The Hurricane Harvey Registry is a project that collects health, location, and exposure information from people affected by Hurricane Harvey. This project is led by Dr. Marie Lynn Miranda from Rice University. This project is funded by the Cullen Trust for Healthcare, the Environmental Defense Fund, and the National Institutes of Health. The Hurricane Harvey Registry surveys will collect health, location, and exposure information from Houston area residents and people who came to Houston during Hurricane Harvey. This information can help identify health trends and risks associated with Hurricane Harvey. The registry will also support planning for future natural disasters and policy making by city officials.

If you are 18 or older and lived in the Greater Houston area during Hurricane Harvey (August/September 2017) you can take the core survey. You can take the survey, whether you flooded or not. Therefore, anyone who lived in the Westbury area during Hurricane Harvey is eligible to take the brief, 10-minute survey.

[harveyregistry.rice.edu](http://harveyregistry.rice.edu)

**" AREA RESIDENTS AND NEIGHBORHOOD SPECIALISTS "**

**JACKIE AND KENDYL TEAM**



JACKIE MURRAY KENDYL MAURER-SOMER  
(713) 825-9179 (281) 904-8199

**Over 40 Years of Experience**  
**Selling? SOLD when you list with us!**

JackieKendylTeam@WayneMurray.net

**Weichert** REALTORS  
The Murray Group  
(713) 728-2300

*Leading* REAL ESTATE COMPANIES OF THE WORLD™  
We're Local We're Global



11102 Endicott  
3/2/2 • \$270's



5431 Paisley  
4/2/2 • \$390's



5750 Bankside  
4/2/2 • \$270's



4603 Holly  
\$1M+



5230 Starkridge  
3/2/2 • \$280's



5806 Belrose  
3/2/2 • \$290's

**HOUSTON • KATY • SUGAR LAND • THE WOODLANDS**

# Crime Statistics for Westbury SuperNeighborhood

**November 26 - December 27, 2018**

## Crime in Westbury Single Family Homes

Block	Street	Crime	Date	Time	Section of W
11400	Ashcroft	Burglary from Motor Vehicle	12/4	8AM	Westbury 3
12400	Ashcroft	Burglary from Motor Vehicle	12/13	9AM	Westbury South
5700	Bankside	Theft - US Mail	11/28	9PM	Parkwest 2
5500	Burlinghall	Theft - Misc./Other	11/29	9AM	Westbury 3
5800	Cartagena	Theft - Misc./Other	12/2	3PM	Westbury 3
6000	Densmore	Burglary from Motor Vehicle	12/13	8AM	Westbury 4
6000	Densmore	Theft - Misc./Other	12/20	7PM	Westbury 4
5600	Dryad	Burglary of Habitation	12/14	4PM	Westbury 4
5700	Effingham	Auto Theft (car)	12/2	9PM	Westbury 4
11000	Endicott	Burglary from Motor Vehicle	12/9	2PM	Westbury 1
5800	Farwell	Theft - Mics./Other	12/27	6PM	Westbury South
6000	Fontenelle	Auto Theft	12/11	8AM	Westbury 4
11100	Hillcroft	Burglary of Building	12/25	1PM	Westbury 5
12400	Landsdowne	Burglary from Motor Vehicle	12/13	7AM	Westbury South
5900	Lattimer	Burglary from Motor Vehicle	12/22	11PM	Parkwest 3
12300	Mullins	Burglary from Motor Vehicle	12/11	10AM	Westbury South
10800	Oasis	Auto Theft (car)	11/28	11PM	Westbury 2
5400	Redstart	Auto Theft (truck)	12/18	11AM	Westbury 2
5400	Redstart	Burglary from Motor Vehicle	12/18	7AM	Westbury 2
5500	Spellman	Theft - Misc./Other	12/11	3PM	Westbury 5
5700	Stillbrooke	Auto Theft (car)	12/2	10AM	Parkwest 2
5700	Stillbrooke	Burglary of Habitation	12/3	9AM	Parkwest 2

**KEY**

- Burglary from Motor Vehicle
- Auto Theft
- Theft
- Burglary
- Aggravated Assault with Weapon
- Aggravated robbery with weapon

The Westbury Civic Club strives to provide accurate information. Due to the printing date of the *Crier*, crime statistics are always delayed.

The crimes listed below took place between November 26 and December 27. They are in alphabetical order by street. The crimes are highlighted by type. Please see key above.

## Crime in Commercial, Public Spaces, and Apartments

The chart below breaks out the type of crimes and how many at each type of location. The apartments in 12500 and 12600 Dunlap continue to have high crime rates, 17 of the 32 crimes at apartments/townhomes occurred there. The WCC is working with HPD to help monitor this area more closely. The number of Auto thefts in the area is also concerning. The WCC tries to publicize an accurate update list of crime in the area. If you have an idea of format, please call the office.

Crime Type	Westbury Homes	Apts./Townhomes	Commercial/Business	Public Space (Willow WH)
Aggravated Assault	0	5	1	0
Aggravated Robbery	0	4	1	0
Burglary from Motor Vehicle	8	8	3	0
Burglary of Building	1	0	3	0
Burglary of Habitation	2	7	0	0
Theft - other	5	1	2	0
Theft - Shoplifting	0	0	2	0
Theft- Car Parts	0	0	1	0
Theft - US Mail	1	0	0	0
Theft - From Building	0	1	0	0
Auto Theft	5	6	0	0
<b>TOTAL</b>	<b>22</b>	<b>32</b>	<b>13</b>	<b>0</b>

**Westbury Area Patrol**  
281-463-6666



\*Taking a vacation? Don't forget to call in your Vacation Watch with the Constables if you pay your dues.

**SW HPD Station**  
832-394-0400  
**HPD Non-Emergency**  
713-884-3131





## Support our Westbury Area Patrol TODAY

A large part of the funds paid to Precinct 5 for our WAP Security Patrol (Harris County Precinct 5 Constables) is paid VOLUNTARILY by our residents who do not have mandatory assessments. If you appreciate this vital service, please consider showing your appreciation by sending a contribution TODAY for the WAP security patrol. See page 1 and 17 with information about how to send an online payment by PayPal or where to send your checks to our bank deposit lockbox in Dallas. Thank you for supporting WAP security patrol and for supporting our Westbury neighborhood!

## Constables Seek to Develop List of Residents with Security Cameras

Sgt. Derkowski of the Constables Precinct 5 Westbury Area Patrol (WAP) notes that some homes have security camera video systems with a view of public streets. These camera / videos can be very helpful to get photos of criminal suspects or to figure out which direction a criminal suspect has fled. Sgt. Derkowski is interested in developing a list of Westbury residents, in advance, who are willing to share photo or video information from their home security systems with the constables to help solve crimes.

If interested in participating in this program, please contact Sgt. Derkowski directly. He will need your NAME, House ADDRESS, and CONTACT INFORMATION (phone and email).

To contact Sgt. Derkowski, you can call the constable dispatcher at 281-463-6666 and ask that Sgt. Derkowski contact you, or you can email him at: [Nicholas.Derkowski@cn5.hctx.net](mailto:Nicholas.Derkowski@cn5.hctx.net)

**Vacation Watch** If you pay your Westbury Area Patrol dues, make sure you request a vacation watch by the Constables. This is a great service that is included in our contract. You can register for a vacation watch online at <https://constablepct5.com/index.php/vacation-watch/> or by calling 281-463-6666 and requesting a deputy come by your house.

## Back the Blue 5k Race

February 9, 8 AM to Noon

Willow Waterhole, 5300 Dryad

→ Race Tickets available at [www.backtheblue5k.com](http://www.backtheblue5k.com)

The Houston Police Family Support Unit is hosting a 5K Race. This group was founded for the purpose of providing assistance when an officer is involved in a line-of-duty injury. When these incidents occur, an officer's income and that of the family, are greatly reduced while the officer is on medical leave from the department. Since the injured officer is unable to receive a regular paycheck or pursue any overtime pay, or additional income from working a second job, his or her family is at risk of not meeting its needs. This is where this organization, the Houston Police Family Support Unit, provides assistance. The Family Support Unit helps these officers by providing materials and support during such difficult times. Many of the officers and their family members need emotional as well as day-to-day support. The members of the Family Support Unit are prepared and willing to step up and assist the family with some of their basic needs.

Along with helping an officer and his family in a time of need, another goal is to bring together the families of the Houston Police Department and the members of the community in order to support the officers of The Houston Police Department. By hosting the inaugural Back the Blue 5K, we hope to do just that. We hope that the community will come together to show the Houston Police Department how important it is to our city. Consider participating on February 9, 2019, as either an event sponsor or runner/walker. Along with a 5K race, there will be a one-mile fun run and other community activities.



**Plumbco**  
**Plumbing**  
[www.plumbcohouston.com](http://www.plumbcohouston.com)  
 MPL#12248  
 your neighborhood plumber

**713-721-PLUM**  
 For all your  
**Plumbing** (7586)  
 Installations and Repairs

**FRYE AND BENAVIDEZ, PLLC, a law firm**

3315 Mercer Street (a mere 18 minute drive from Westbury)  
 Houston, TX 77027 713-227-1717

***www.liberatinglaw.com***

*Phyllis Frye has been a Westbury neighbor since 1974 and a lawyer since 1981.*

## Why Support the WCC and WAP?

Westbury is a unique neighborhood in Southwest Houston. While all 5,000 homes in our Westbury neighborhood have active deed restrictions, only 400 have mandatory assessments. This means the Westbury Civic Club heavily relies on financial contributions from residents like you. Westbury has historically had strong voluntary support because residents understood the great benefits of the WCC and our programs. However, contributions to the Westbury Civic Club and to the Westbury Area Patrol were down in 2018. By working together, we can meet the challenges head on and keep our neighborhood the jewel that it is. The total amount for the **2019 Voluntary Dues is \$335**. That is less than a dollar a day! The **Westbury Civic Club dues are \$50** for the year. The WCC suggests a contribution of **\$285 for the Westbury Area Patrol (a paid contract with Precinct 5 Constables)**.

### Why should you pay your Westbury Civic Club dues? (\$50)

The Westbury Civic Club (WCC) works on: reducing neighborhood blight, enforcing deed restrictions, improving economic development, and advocating for our fair share of the City's budget. We hold two semi-annual White Elephant Sales and host neighborhood events such as Keep Westbury Beautiful Day. We publish the award-winning *Westbury Crier* monthly. The WCC has one employee who works closely with our City Council Office and city departments to ensure timely responses to resident's complaints, like Solid Waste problems. We also continue to work diligently with the City and the County to find real solutions to flooding along Willow Waterhole Bayou. The WCC is a strongly advocate for the City to continue on schedule with storm drain reconstruction projects in Westbury with ReBuild Houston. This project was to start in 2020 but has been delayed a year due to Harvey. **Please pay your Westbury Civic Club dues.**

### Why should you support the Westbury Area Patrol?(\$285)

The largest program and biggest expenditure for the WCC is for the Westbury Area Patrol (WAP). The WCC has had a contract with Harris County Precinct 5 deputies since 1986. The WAP offers 24 hour coverage, vacation watches, home security checks, and alarm monitoring. The program provides high visibility, rapid response to emergency and non-emergency calls. Daily patrolling enables the deputies assigned to Westbury to become familiar with the neighborhood, thereby alerting them to "out of the ordinary" situations and ability to respond better and faster. WAP officers were instrumental in recently catching young criminals in Westbury South who were attacking and robbing elderly residents. Harris County Pct 5 has a dedicated investigative unit that can be available if needed. The WCC has had to lower the number of deputies from 4 to 3 in 2019, and we could be in danger of losing the program if participation in this important program does not improve. **Please support the Westbury Area Patrol.**

## Do you Rent a Home in Westbury?

Thank you for choosing to live in Westbury! One of the benefits of living here is having the Precinct 5 Constable program that provides additional security for our neighborhood.

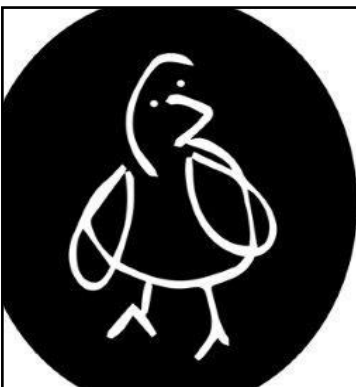
According to one website, homes in Westbury rent from \$1,300 to \$3,300 a month with the average across Houston at \$1,700 or \$20,400 a year. The \$285 requested contribution is on average just 1.3% of that annual income. For less than a dollar a day your landlord can help keep you safe with this added layer of security.

However, if your landlord doesn't care, you may make a contribution to this program yourself and be able to call the WAP patrol for service and use the vacation watch service. Whether you pay or not, the officers are still on our streets each day. Use the form on the front of this Crier or on the next page to send in your payment.

Or you can send this article to your landlord and ask him to protect you and his investment by contributing.

## City Abatement Contract Approved

Good news. City Council approved on November 28, 2018, a contract for Abatement Services managed by the Department of Neighborhoods. What are "abatement services"? Sometimes property owners do not clean up nuisances on their property, and the city pays for the work to be done and then charges the property owner. There has been a problem for a while that no contract was in place to do the abatement work. Now that a contract is in place again, nuisances which have been on hold will be cleaned up (abated). The abatement services are critical to maintaining both environmental and public safety, and the character of our communities. Westbury has several properties that are in need of abatement.



Are you looking for a reliable dog walker or pet sitter for while you are at work or on vacation??

**Boon Pet Care**  
is here for you!

As Westbury residents, we are committed to taking the very best care of our neighbors' loved ones.

Check out our website for pricing and details: [www.booncare.com](http://www.booncare.com)

Or contact us today: [booncare@gmail.com](mailto:booncare@gmail.com) or 713.936.2623

# 2019 Dues/Assessments

## **ATTENTION: PARKWEST 1&2**

Homes purchased in Parkwest 1 after Jan. 1, 1993 and Parkwest 2 after Jan 1, 1994 have mandatory assessments.

**The amount of the 2019 Mandatory Assessments is \$240.75. The 2019 Assessments are due by February 1, 2019.**

If you have any questions or do not get your invoice by December 15, please contact the WCC office at 713-723-5437 or email westburycc@sbcglobal.net.

## Mission of the WCC

*The purposes of the Westbury Civic Club, Inc. (the "Club") are to improve the appearance of the Westbury area and promote the civic, cultural educational, health, and general welfare of the residents of the Westbury and Parkwest subdivisions in Harris County, Texas (collectively, the "Community").*

## Why Should I Pay My Dues? What are the Benefits?

- Protects your investment in your home by keeping Westbury a strong and vibrant neighborhood.
- Keeps the doors of the Civic Club office open and staffed.
- Protects your home and family with the Westbury Area Patrol through Constable Precinct 5.
- Improves the looks of our esplanades, parks, and green spaces.
- Advocates for City services and infrastructure improvements
- Hosts two White Elephant Community Garage Sale events each year
- Organizes community get togethers such as Coffee with Constables and National Night Out

## Why do my dues go to Dallas? Is this correct?

Yes, this is correct! We have you mail your payments directly to our bank's processing center. This allows your payments to be processed immediately.

Please send this form in with your payment

## 2019 Westbury Civic Club Dues

By filling out this form, you are giving the WCC permission to send you communications. We DO not sell your information or give it out to other entities.

Name(s) \_\_\_\_\_

Address \_\_\_\_\_

Home Phone \_\_\_\_\_ Work \_\_\_\_\_ Cell \_\_\_\_\_

E-mail \_\_\_\_\_

**Make checks payable to:  
Westbury Civic Club, Inc.**

**Mail to:  
P.O. Box 975182  
Dallas, TX 75397-5182**

**Online payment:  
paypal.com—Send Money to  
westburycc@sbcglobal.net  
Make sure to include your  
address or account number**

### **Want to send your support in multiple payments?** You may choose any

amount to pay in any increment throughout the year.  
Here are a few examples:  
2 payments of \$167.50 is \$335/yr  
3 payments of \$111.67 is \$335/yr  
4 payments of \$83.75 is \$335/yr  
5 payments of \$67 is \$335/yr  
12 payments of \$28 is \$336/yr

<b>Westbury Civic Club Dues*</b>	<b>\$50</b>	\$	
<b>Westbury Area Patrol</b>	<b>\$285</b>	\$	
<b>Subtotal</b>	<b>\$335</b>	\$	
<b>Additional Contributions:</b>			
<b>Westbury Civic Club</b>		\$	
<b>Westbury Area Patrol (WAP)</b>		\$	
<b>Total</b>		\$	

\*The Westbury Civic Club Dues encompasses all operations, programs, and services including greenspace, of the Westbury Civic Club, except patrol services.

Thank you for supporting the Westbury Civic Club and our important programs. We can't do it without you!  
To contact the WCC Office, email westburycc@sbcglobal.net or call 713-723-5437.





Wondering what your  
property is worth in  
today's market?

Call

**The Mercer Team**

now for a

**FREE MARKET ANALYSIS!**

**713-826-7274**

Why have one Realtor when  
you can have a whole team!



**RE/MAX Metro**

2626 Richmond Ave

Houston, TX 77098

LARRY MERCER

EMAIL: [TheMercerTeam@yahoo.com](mailto:TheMercerTeam@yahoo.com)

[www.larrymercerteam.com](http://www.larrymercerteam.com)

## Local Restaurant Update

### NEW Restaurant "THE CATCH" Coming Soon

The Catch, 10105 South Post Oak, is a fast casual Cajun style seafood restaurant in Texas which is nearing completion. Perhaps it has already opened by the time you read this article. The restaurant serves gumbo, shrimp, catfish, chicken, crawfish, grits, red beans, and more. Their website notes that the criteria for site development for The Catch includes: population of 100,000 people or more, median household income of \$40,000 to \$100,000, more than 25,000 cars per day traffic, and restaurant seating for 60 to 90 people.

**THE CATCH**

### Fuddruckers in Meyerpark CLOSED

The Fuddruckers restaurant located in the Meyerpark shopping center closed in December. This closure is related to closures of other Fuddruckers and Luby's Cafeterias across Texas. The company closed and sold eight properties in May for \$11.6 million, helping the company pay down its \$39.5 million outstanding debt. In September 2018, Luby's announced that it planned to close more properties, but did not divulge which locations. In a November 2018 press release, the CEO announced, *"We continued our plan to pay down our debt significantly, by selling company-owned restaurants whose property values exceeded the unit economics of continued restaurant operations at the locations. We sold 10 properties in fiscal 2018 generating \$14.6 million in proceeds, which is approximately 25% of the value of the assets in our asset sales program. As we execute on the asset sales program, we are also pursuing a refinancing of our debt under a new credit facility. We continually review our portfolio of owned and leased restaurant locations, evaluating them on profitability. Based on that metric we have closed 21 restaurants in fiscal 2018. Along with the restaurant closures, asset sales program and pending refinancing, we have also made reductions in certain corporate support staffing in the fourth quarter."*

## Feeding Stray Cats

Westbury is known as an animal loving neighborhood. BUT for some residents too much love is not a good thing. The Civic Club has received numerous complaints about neighbors feeding stray cats. It is against City ordinance to feed stray cats unless you trap them and have them neutered.

### Links for Lost & Found Pets

Nextdoor Westbury - [www.nextdoor.com](http://www.nextdoor.com)

Westbury Lost and Found Pets Facebook

Westbury CARE- Contact at [westburycare@gmail.com](mailto:westburycare@gmail.com) or at [www.westburycare.com](http://www.westburycare.com), Compassionate Animal Rescue Efforts is located in Westbury.



## In Memory of President George H. W. Bush

With sorrow, we acknowledge the passing in December of our fellow Houstonian, President George H. W. Bush, the 41<sup>st</sup> President of the United States of America. President Bush and his wife Barbara both passed away in 2018. President Bush served our nation in many roles, and opted to return to Houston after he retired from public service.

Houston is a better place due to the many kindnesses from the Bush family. They attended Houston sporting events with passion. President Bush is remembered for his "Thousand Points of Light" initiative to encourage volunteerism and community service, and Barbara and George Bush supported many community and volunteer activities here in Houston. President Bush helped raise public funds to recover in Texas after Hurricane Ike in 2008 and Hurricane Harvey in 2017 and for other major disasters around the USA and the world.

Farewell, President Bush.



## KEEP YOUR FAMILY HEALTHY WITH HOUSTON METHODIST PRIMARY CARE

### Our primary care doctors make your family their top priority.

We provide personalized care for your whole family, including physicals, immunizations and preventive care.

Many of our practices:

- Provide online scheduling
- Offer same-day appointments
- Are conveniently located close to work or home
- Accept most major insurance plans

HOUSTON  
**Methodist**  
PRIMARY CARE GROUP

[houstonmethodist.org/pcg/central](http://houstonmethodist.org/pcg/central)  
713.394.6638



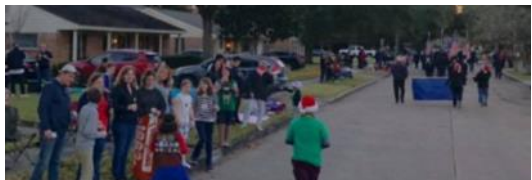
# 20th Annual Deck the Halls Parade

The 20th Annual Deck the Halls parade was awesome! The weather was perfect for the thousands who lined the streets. The parade was huge this year and there were many parties both in the parade and on the lawns. A million thanks go to the Mandel family for this incredible labor of love. Thanks for including the WCC! We always have a blast.

We love celebrating with so many of the things that make Westbury great. WHS Air Force ROTC, WHS blue diamond dancers, WHS softball and baseball coaches and booster team, Boy Scouts and Girl Scouts, members of the Westbury Community Garden, our very own published author Jennifer Mathieu, Westbury CARE, Westbury 1 residents, dozens of Art cars, 3 Brothers Bakery, a couple who got married, a woman who just graduated, and dozens of other types of parties. And then there were all the great yard parties that were happening along the route.

Thanks to Donna Robert, Walter Chapman, Eugene Sirls and Theresa Orsborne for carrying our banner. Jennifer and Connor Edmondson along with neighborhood friend, Caspar Berry, passed out more beads than ever! A special thank you to Robert Ellis-Montgomery for his bead stash! They were a big hit!

**Thank you Mandel family! We love you.**



## Quotes from the Westbury Facebook page

*"It was beyond excellent!"* Sheryl Rucker

*"We. Literally. Love. The. Parade. Thank you so much for being the one and only reason we will never ever ever sell our house!"* Adele Bosquez

*"One of the many highlights of living in Westbury!"* Jennifer Mathieu Blessington

*"Twas our first year attending the parade and it was AWESOME!"* Elizabeth Vitek

*"What an awesome parade!"* Sharon Neider

*"Kudos to the organizers of this awesome, neighborhood building event!"* Betsy Longoria

*"Thank you for all your hard work and commitment! We had a blast!"* Tammy Biser-Sherborne

*"This was such a fun parade this year!"* Danielle Bustillos SoRelle

*"So much fun participating in the parade. People lining the streets are partying & visiting with neighbors. That's what it's all about."* Donna Robert

<p>Water Heaters: Regular &amp; Tankless</p> <p>Disposals</p> <p>Water Lines</p> <p>Gas Lines</p> <p>Drain Cleaning</p> <p>Under Slab Repairs</p> <p>Re-route kitchen &amp; laundry pipes</p>	<h1>ASTRO PLUMBING</h1> <p>Full Service Plumbing and Repair Specialist</p> <h2>713-256-0017</h2> <p>★ JOHNNY LEWIS ★</p> <p>WESTBURY RESIDENT</p>	<p>New Sewer Lines</p> <p>Hydrostatic Testing</p> <p>Remodeling &amp; Repairs</p> <p>Sinks</p> <p>Faucets</p> <p>New Drains under Bathroom</p>	
<p>M16312 ★ Since 1985</p>	<p>★ Senior Discounts</p>	<p>★ All Major Credit Cards</p>	<p>★ Fully Insured</p>



# BEST HOMES

## Westbury 1

- 1<sup>st</sup> Place: 5222 Briarbend - John & Peggy Dybala  
 2<sup>nd</sup> Place: 5203 Kinglet - Tim Duffey  
 3<sup>rd</sup> Place: 10919 Doud—Richard & Debbie Koenig

## Westbury 2

- 1<sup>st</sup> Place: 10814 Oasis - Andy and Allison  
 2<sup>nd</sup> Place: 5250 Stillbrooke - John and Gilbert  
 3<sup>rd</sup> Place: 11123 Cedarhurst - Terri and Cindy

## Westbury 3

- 1<sup>st</sup> Place: 5727 Belrose—Rudy Elizondo  
 2<sup>nd</sup> Place: 5223 Benning—Jim & Amy Miller  
 3<sup>rd</sup> Place: 5715 Arboles - Carrie Cumming

## Westbury 4

- 1st Place: 5715 Ettrick—Kenneth Blake  
 2nd Place: 11927 Dunlap—Alan Moehue & Brent Leafgreen  
 3rd Place: 6015 Dellfern — Kevin L. Randle

## Westbury 5

- 1<sup>st</sup> Place: 5523 Sanford - Gregory Schmid  
 2<sup>nd</sup> Place: 10714 Braewick - Charles and Mary Welch  
 3<sup>rd</sup> Place: 6035 Vickijohn - Enrique and Connie Montalbo

## Parkwest 1

- 1<sup>st</sup> Place: 5615 Portal — Brian Mueller  
 2<sup>nd</sup> Place: 5631 Hummingbird —Ashley Hope & Josh Weisburg  
 3<sup>rd</sup> Place: 5527 Briarbend — DJ & Elizabeth Carwile

## Parkwest 2

- 1<sup>st</sup> Place: 5703 Benning  
 2<sup>nd</sup> Place: 5806 Bankside - Peter and Jennifer Zografos  
 3<sup>rd</sup> Place: 10814 Rampart

## Parkwest 3

- 1<sup>st</sup> Place: 5906 Lattimer — David & Carrie Peterson  
 2<sup>nd</sup> Place: 6018 Cerritos — Jose Hoyos  
 3<sup>rd</sup> Place: 5903 Arboles—Jeff & Karen Burns

## Westbury South

- 1<sup>st</sup> Place: 5714 Firenza  
 2<sup>nd</sup> Place: 5863 Southminster  
 3<sup>rd</sup> Place: 5723 Greencraig

# 2018 Holiday Decoration Winners



# BEST STREETS

Westbury 2 - 5500 Creekbend

Westbury 3 - 5700 Belrose

Westbury 4 - 5700 Ettrick

Westbury 5—11000 Atwell

Westbury South - Farwell and Firenza

Parkwest 2 - Bankside and Portal



next stop:

nextlevel  
 URGENT CARE

Running a fever? Don't get burned by the hassle and expense of an ER. Get quick and easy care at Next Level Urgent Care.

Multiple locations in the Houston area  
 Open 9am-9pm, 7 days a week.  
 4936 Beechnut Street, Houston, TX 77096

Let's Get Appy!  
 Next Level mobile app  
 available now!







### The HotSpot for Scout Projects

There were three Scout projects in December at the Willow Waterhole, including the first sister and brother Scout projects

#### Scout Project – New Benches

Avery Oswald from Troop 99 at St. Thomas More completed his Eagle (BSA) project in December. With help from friends and parents, he assembled and installed two park benches at the Pocket Prairie area of Triangle Lake. The benches were donated by Cheniere Energy, a supporter of youth and greenspace projects. Avery consulted with Cobb Fendley Engineering for construction specs and reviewed his project with the City of Houston Parks Department and Harris County Flood Control District.



Avery Oswald and friends by the 2 new benches

#### Scout Project – Tree Planting

Brianna Nealy and Will Nealy from Pearland scout troops 27260 and 404 completed their Gold and Eagle Scout (BSA) projects in December by planting a new tree grove at Triangle Lake. This project is the first combined sister and brother scout projects at the Willow Waterhole and are the 34th and 35th Gold/Eagle projects completed in a little over three years. Twenty large trees were donated by Trees for Houston (TFH) and included oak, maple, sycamore, and pine trees. Brianna and Will secured the TFH donation, pulled tree stakes from another location to use at this site, solicited donations of mulch from Lowes and Home Depot, and rounded up friends to help.

### Willow Waterhole Walking Tours

The Willow Waterhole Conservancy schedules periodic walks for the public to enjoy the Willow Waterhole together. The walking tour in December was attended by over 40 people, who enjoyed cool and clear weather with their exercise. What a perfect day for a walk! Coffee and cocoa was served at the starting point, located at the Rafferty Memorial, near Ricecrest.

The Conservancy will conduct walking tours periodically, announcing the events on Facebook, Nextdoor, and in local newsletters. Come out and enjoy the natural beauty at the Willow Waterhole, and see projects completed by volunteers and flood control work completed by Harris County.



Walking tour group at Rafferty Memorial



Brianna and Will Nealy with some of their newly planted trees

**ALL TYPES IRRIGATION, INC.**

OVER 30 YEARS EXPERIENCE  
 Design • Drainage • Installation • Service  
 Commercial • Residential

**Emil Becker**  
 T.I.L. #4415  
 D.L. #126891

Office: (713) 726-1636  
 Fax: (713) 726-8322  
 Cell: (713) 819-2872

**RALPH RIEGER, CPA**

We believe in service above Self!

Giving our clients peace of mind with sound tax planning and financial advice, effectively representing them in dealing with the tax authorities, and timely, tender, loving care in preparing their tax returns. Helping Texas business owners make their dreams come true by helping them create extraordinary businesses.

11415 Chimney Rock rieger@riegercpa.com 713-729-1122



## Westbury Community Garden News

[WWW.WESTBURYCOMMUNITYGARDEN.ORG](http://WWW.WESTBURYCOMMUNITYGARDEN.ORG)

### Harvest Party at the Deck the Halls Parade

The Westbury Community Garden participated in the 20th Annual Deck the Halls Parade held in Westbury. In keeping with the theme this year, "Life's Celebrations," the garden float was a **Harvest Party**, complete with bees, butterflies, lady bugs, lots of vegetables, fruits and flowers plus farmers, a scarecrow, a garden gnome, and even Audrey, the Venus fly-trap. It is always fun to see the gardeners at the parade!



## WHERE IS THE GARDEN?

12581 Dunlap (77035) is off Hillcroft between W. Airport and South Main. Heading south on Hillcroft, turn right onto Green Craig, follow it around the bend where it turns into Dunlap. The large blue roof on the WCG Pavilion is readily visible. Street parking.

**JOIN the garden TODAY at**  
[www.westburycommunitygarden.org](http://www.westburycommunitygarden.org)

Contact us today at  
[membership@westburycommunitygarden.org](mailto:membership@westburycommunitygarden.org)



### WCG Fundraising Drive

Westbury Community Garden's fund-raising drive has begun. Watch the video presentation here: <https://www.youtube.com/watch?v=NpAgCkOLsY8>

It's super easy to make a donation by credit card or PayPal at [www.westburycommunitygarden.org/donate](http://www.westburycommunitygarden.org/donate).

## Live to 100?

The BBC recently posted a fascinating article titled: Gardening Could Be the Hobby that Helps You Live to 100. The article notes that many of the world's centenarians share one common hobby: gardening. "Dan Buettner has studied five places around the world where residents are famed for their longevity: Okinawa in Japan, Nicoya in Costa Rica, Icaria in Greece, and Loma Linda in California and Sardinia in Italy. People living in these so-called "blue zones" have certain factors in common – social support networks, daily exercise habits and a plant-based diet, for starters. But they share another unexpected commonality. In each community, people are gardening well into old age – their 80s, 90s and beyond. Could nurturing your green thumb help you live to 100?"

Some benefits to gardening mentioned in the article include:

- ◆ Gardening provides low-intensity physical activity on a regular basis.
- ◆ Gardening reduces stress. A Dutch study split people into two groups and asked them to do a stressful task. The gardeners had lower levels of stress hormones and felt restored to a good mood after gardening, while the group of indoor readers felt that their mood got worse.
- ◆ Australian researchers say that men and women in their 60s who garden regularly had a 36% lower risk of dementia than non-gardeners. Studies also indicate that elderly who have cognitive issues benefit from fresh air and sunlight.
- ◆ Gardening can provide a sense of purpose and social connections.



**LEWIS CONSTRUCTION**  
 Same Name, Same Number Since 1991  
**713-944-5257**  
 Myron Lewis, Owner  
 Fax 1-888-850-3742  
 lewiscosince1991@gmail.com  
 Complete Home Remodeling




**GHBA**  
 GREATER HOUSTON  
 BUILDERS ASSOCIATION

**BBB**  
 ACCREDITED  
 BUSINESS

[www.YourCompleteHomeCare.com](http://www.YourCompleteHomeCare.com)



**AnnA DeMoss: Appraisals**  
 832-233-2010

Specializing in Southwest Houston Residential Appraisals  
 For Estate or Divorce Settlements, Pre-Listing Price Determination  
 and Other Legal Issues, Including Pre and Post Flood Valuations  
[anna@annademoss.com](mailto:anna@annademoss.com)

**Maxx Gonzalez**  
 El Arte D'Pintar  
 Expert Int./Ext. Paint  
**832-212-0739**  
[maxx@maxxgonzalez.net](mailto:maxx@maxxgonzalez.net)  
[www.maxxgonzalez.net](http://www.maxxgonzalez.net)



- ◆ Sheetrock Repair
- ◆ Stain
- ◆ Fancy Texture
- ◆ Walls
- ◆ Faux Finishing

**ASTRO PLUMBING**

“YOUR PROFESSIONAL PLUMBER”  
 BEST PRICES • FREE ESTIMATES • SENIOR DISCOUNT

**CALL JOHNNY**  
 Cell: 713-256-0017

JOHN LEWIS  
 M16312

ALL MAJOR CREDIT  
 CARDS ACCEPTED



**Legal Eagle CONTRACTORS**  
**REMODELING**  
 Since 1974

[www.legaleaglecontractors.com](http://www.legaleaglecontractors.com)

**Houston's Most Trusted contractors**



BBB Rating: A+



**Dan Bawden, Master Builder**  
**713-723-8850**

Come see our Showroom at  
**5008 Locust Street**  
 at South Rice, Bellaire

**Design and Build**  
**Kitchens ★ Baths ★ Additions**

*Westbury's favorite remodeler for over 25 years!*





Senior-focused  
 Remodeling  
 is our Specialty

\* 2019 \* Happy New Year \* 2019 \* Happy New Year \* 2019 \* Happy New Year \* 2019 \* Happy New Year \* 2019 \* Happy New Year \* 2019 \* Happy New Year \* 2019 \*



**UNITED, REALTORS®**

Buy, Sell  
 or Lease

**Tony & CharlseY Porcarello**

\*\*\* Westbury Specialist + Top Producers \*\*\*

Tony: 713-898-1546 - [tporcarello@yahoo.com](mailto:tporcarello@yahoo.com)

[www.porcarello.com](http://www.porcarello.com)

*We Know Westbury and Call it Home for 40 Years!*





11010 Crestmore Street  
 \$579,000



5522 Belrose Drive  
 \$375,000



6027 Cartagena Street  
 \$249,000

\* 2019 \* Happy New Year \* 2019 \* Happy New Year \* 2019 \* Happy New Year \* 2019 \* Happy New Year \* 2019 \* Happy New Year \* 2019 \*