



Westbury Crier

VOLUME 62, ISSUE 1

JANUARY 2017

Join the Westbury Civic Club Today!

Happy New Year! Thanks to those of you who paid the 2016 dues. We need EVERYONE to pay their dues. The WCC can't function without YOU! A safe, secure, nice place to live is what we all want. Your financial support and participation keeps the Westbury Civic Club up and running and is one of the reasons that Westbury has been listed as one of the top neighborhoods in Houston.

In 2016, we celebrated 60 years of service by the WCC. Westbury would be a very different neighborhood if it weren't for the residents who pay their annual dues and volunteer their time. Although some homes in Parkwest have mandatory assessments, most homes in Westbury have Voluntary Dues (form is on page 17). Dues for WCC membership are just \$50. Your Westbury Civic Club dues pay for office space plus an office manager, who fields a wide range of WCC tasks. These include assisting the board and support for residents, outreach projects and producing the Crier. The dues are also used to beautify our esplanades and parks, plant and water trees, remove litter from and mow common areas, and maintain our subdivision markers.

The Westbury Area Patrol (WAP) puts certified police officers in our neighborhood and on our streets. Their visibility

(even if you think you do not see them, the criminals know they are around) coupled with their quick response time makes them an invaluable component of neighborhood safety. There won't be an increase in cost this year. We ask for \$285 per household for the Westbury Area Patrol.

Please write a check to the WCC today! We need EVERYONE to pay their dues. We need EVERYONE to support our Westbury Area Patrol. We believe that the total dues of \$335 (just 92 cents per day) provide a worthwhile service that protects the value of your home and the safety of your family. Working together, we really DO make a difference.

2016 was another stellar year of accomplishments. They are summarized on pages 6 and 7. You can read about the services and benefits provided by the WCC on page 11.

Pay your 2017 dues!



WCC Green: Keep Westbury Beautiful at Westbury Park butterfly garden



WCC Advocacy: Meeting with CM Larry Green, Mayor Turner, & Congressman Al Green after repeated floods



WCC Green: Street Sign Cleaning Contest & Street Post Beautification Project



WCC Outreach: WAP Constables at WCC 60th Anniversary Party



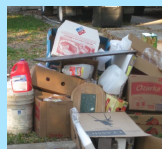
WCC Advocacy: Meeting with COH Engineers & residents along Ludington and Cartagena after repeated floods

SPECIAL TRASH FEATURE

ON PAGES 8 -10



- ⇒ What is the difference between Junk Waste, Tree Waste, and Yard Waste?
- ⇒ Where are the city's recycling centers?
- ⇒ When is heavy trash pick up?



CHECK OUT PAGES 8, 9, & 10 FOR ALL THE ANSWERS AND MORE!



HEAVY TRASH SCHEDULE

January—TREE WASTE ONLY

➡ Thursday, January 12

February—JUNK WASTE

➡ Thursday, February 9

March—TREE WASTE ONLY

➡ Thursday, March 9

DO NOT PLACE TRASH ON CURB UNTIL WEEKEND BEFORE HEAVY TRASH DAY

IMPORTANT CONTACTS

WCC OFFICE

5322 W. Bellfort #107, Houston, TX 77035

Jennifer Edmondson.....WCC Office Manager

NOTARY SERVICE IS AVAILABLE TO DUES PAYING

WESTBURY RESIDENTS during office hours or by appt.

OFFICE HOURS/CONTACT

Monday - Thursday.....9:00AM-1:00PM

Closed Friday, Saturday, Sunday, and holidays

Telephone.....713-723-5437

Email.....westburycc@sbcglobal.net

Deed Restrictions.....westburycc@sbcglobal.net

Visit our website at www.westburycrier.com

“Like” us on Facebook at Westbury Houston

SECURITY

Pct. 5 Constables (WAP).....281-463-6666

including suspicious activity, burglar alarms and vacation watch

Emergency.....911

Houston Police Dept. Non-Emergency..... 713-884-3131

Westbury HPD Storefront.....832-394-7520

CITY OF HOUSTON

District K Council Member, Larry Green.....832-393-3016

District C Council Member, Ellen Cohen.....832-393-3004

Deed Restriction Enforcement (City Legal).....832-393-6333

Platou Community Center.....713-726-7107

Meyer Library.....832-393-1840

Mayor’s Citizen Assistance Office.....832-393-0955

Houston Help & Information.....311

For missed garbage pickup, water line breaks, potholes sewer repairs, dead animals, traffic signals, heavy trash violations, neighborhood nuisances, and other city services

CENTERPOINT ENERGY

Electric outage.....713-207-2222

Suspected natural gas leak.....713-659-2111

Street light repairs.....713-207-2222

Make sure to give pole number

OTHER IMPORTANT CONTACTS

County Commissioner Gene Locke.....713-755-6111

Graffiti.....www.braysoaksmd.org

Shopping Cart Removal.....www.braysoaksmd.org

Brays Oaks Mgmt. District - Use “report a problem” link

Poison Control.....1-800-764-7661

Harris County Tax office.....713-368-2000

Harris County Appraisal District.....713-957-7800

2017 WCC BOARD OF DIRECTORS

If no contact information is provided, contact the WCC Office at westburycc@sbcglobal.net or 713-723-5437

EXECUTIVE BOARD

President.....Becky Edmondson

wccpresident@westburycrier.com or 713-443-3951

Vice President.....Marcia Hartman

Secretary.....Dan Vega

Treasurer.....VACANT

DIRECTORS AT LARGE

Communications.....Matt Bruns

Community Relations.....Cindy Chapman

wcccommunityrelations@westburycrier.com

Deed Restrictions.....Jennifer Edmondson

westburycc@sbcglobal.net

Flood Control & Infrastructure.....Donna Strom

Greenspace Beautification.....VACANT

Membership.....Jeff Benavides

Security.....VACANT

Volunteer & Event CoordinatorRobert Montgomery

rmontgomery002@comcast.net

SECTION DIRECTORS

Westbury 1.....VACANT

Westbury 2.....VACANT

Westbury 3.....Tony Robert

Westbury 3.....Recy Dunn

Westbury 4.....Judy Overton

Westbury 4.....Eugene Sirls

Westbury 5.....Virginia Livingston

Westbury5E@westburycrier.com

Westbury 5.....VACANT

Westbury South.....Sunny Davis

Parkwest 1.....William Grimsinger

Parkwest 2.....Jeffrey Weiss

Jweiss@txchiro.edu

Parkwest 3.....Joe Niles

parkwest3@westburycrier.com

NEWSLETTER INFORMATION

Published by.....Westbury Civic Club, Inc.

Editor-In-Chief..... Jennifer Edmondson

Edited by.....WCC Publication Committee

Advertising..... 713-723-5437/ westburycc@sbcglobal.net

Ad Disclaimer: The WCC neither represents nor endorses an advertisement in the newsletter. Perform your own due diligence before contacting any advertiser.

President's Message

Happy New Year! The January issue of the *Crier* is always a chance to not only look forward to what the new year will bring, but a chance to look back over the past years' accomplishments. 2016 was a special year as the Westbury Civic Club (WCC) celebrated its 60th year. As we were pulling together the historical data, it was wonderful to have all 60 years of the *Westbury Crier* at our fingertips. I'd like to thank everyone who sent in pictures, articles, and stories from the past. It was nice to get a chance to meet and visit with so many early "settlers".

Having moved into this area as a child in 1961, it is hard to imagine that we now have third generation Westburians. That is why I balk when I hear Westbury spoken about in terms of gentrification. Westbury has always been a place where young professionals, like my dad's contemporaries in the fifties and sixties, came to raise their families; followed by my generation that showed up in the seventies and eighties; and followed now by my children's generation in the 21st century. While some people moved on to make way for the new generation, many residents stayed. To me that is the beauty and the uniqueness of Westbury. We are diverse in every aspect! Except for one...and that is that we all want somewhere safe and secure to live that is convenient to all that Houston has to offer. We are like a small town in the middle of the 4th largest city in the U.S. We know our neighbors and we watch out for one another.

One reason Westbury never became a "deteriorated urban neighborhood" is that it has always had committed and involved volunteers and strong deed restrictions. It is my honor to serve one more year as president of the WCC. This year we plan to work on the deed restrictions. Every neighborhood around us including Maplewood South/North, Meyerland, and Maplewood Civic Club have updated their restrictions. Times have changed since the fifties when ours were written. Having a clothesline visible from the street is no longer high on our list of priorities! To protect Westbury's future we need to take a hard look at all 32 sets of restrictions.

Another priority for 2017 is to continue to advocate for real solutions to mitigate flooding. The Brays Oaks Management District has a new infrastructure committee that is working on that issue. District K, as well as Mayor Turner has a strong commitment to flood mitigation. Work is being done at both the state and federal level to expedite Project Brays. We are also working with District K to get our major thoroughfares reclassified to 4-lane roads rather than the 6-lane designation that currently exists. We will continue our beautification efforts with tree plantings and cleanups.

What I've learned is that we have to be vigilant. Just because we solved a problem 5, 10, 15 years ago doesn't mean it won't rear its head again. We can't sit back complacently; we have to be

proactive. Becoming a recognized Super Neighborhood back in 2005 changed the way we look at both our neighborhood and our relationship to the City. In 2016 Cindy Chapman and I both participated in meetings with two adjacent Super Neighborhoods that have not yet formed as they try to form recognized councils. It is my hope that they both become recognized Super Neighborhoods as we will then have a strong coalition of Southwest Houston Super Neighborhoods. You've got to be part of the process if you want to affect any change. We are better together and working together we really DO make a difference.

Wishing all of you the very best in 2017!
Becky Edmondson



WCC President Becky Edmondson and her grandson, Connor were driven by her husband, Bill Edmondson, at the Deck the Halls parade.



Westbury Civic Club Board Notes December 2016

- ⇒ There was no WCC Board Meeting in December
- ⇒ Available positions on the WCC Board: Treasurer, Security, Westbury 1, Westbury 2, and Westbury 5. If you are interested in serving on the WCC Board, contact the WCC President, wccpresident@westburycrier.com, or WCC Office, westburycc@sbcglobal.net. If you are undecided but want to learn more, come to our next board meeting.
- ⇒ The next WCC Board meeting is Wed., January 18 at 7PM at Westbury Baptist Church, 10425 Hillcroft

It's time to pay your dues!

Please send in your support which:

- Protects your investment in your home by keeping Westbury a strong and vibrant neighborhood
- Protects your home and family with the Constable service
- Improves the look of our greenspaces
- Keeps the doors to your Civic Club office open

The dues form is on page 17

NEXT WCC Board Meeting
Wed., Jan. 18, 7PM-9PM
Westbury Baptist

Platou Community Center

11655 Chimney Rock

Hours: Mon-Thurs 12PM—8PM; Fri 11AM-7PM

Supervisor: 713-726-7107

Meyer Neighborhood Library

5005 W. Bellfort

Phone: 832-393-1840 /
www.houstonlibrary.org

Westbury Martial Arts & Fitness

Mon. & Weds. 6-7PM

Kids of all ages can learn martial arts, fitness & conditioning, confidence, and self-defense. Classes with WMA are a great way to become active in a fun and safe environment. Please visit westburymartialartsand-fitness.com or call 832-475-1554 for more information.

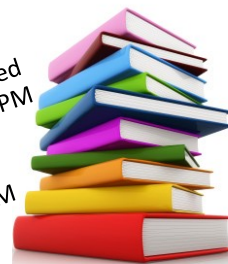
New Supervisor at Platou

The City of Houston has hired a new supervisor for the Platou Center. Jayla Godbolt started at the Platou Community Center on December 27, 2016.

WELCOME JAYLA!!!

LIBRARY HOURS

Sunday & Monday - Closed
Tues. & Weds. 10AM-6PM
Thursday 12PM-8PM
Friday - 1PM-5PM
Saturday - 10AM -5PM



WEEKLY EVENTS JANUARY 2017

Baby Playtime

Tuesdays, 10:30am – 11:15am

Come for creative and collaborative play!
For children ages 0-18 months.

Toddler Storytime

Wednesdays, 10:30am – 11:15am

Stories, songs, activities that will help develop toddler's social, motor, and literacy skills. Intended for ages 18-36 months.

Preschool Playtime

Wednesdays, 1:30pm – 2:15pm

Creative, collaborative play experience that will help prepare your child for school readiness. Intended for ages 3-5 years.

Kids Craft Time

Thursdays, 3:30pm

STRETCHING EXERCISE CLASS

Mon., Wed., Fri. from 9-9:45AM

Improve your flexibility by joining this non-strenuous exercise class.

No registration required.

MsBEEHAVEN QUILTERS -Tues., 10AM - 2PM

GAMES—Wed., 10AM to 12PM

For more information, contact Wally at 713-729-9310

LINE DANCING Mondays @ 1PM

For more information, contact Platou Center, 713-726-7107

Ping Pong Leagues—Wednesday & Friday

Open adult ping pong will be on Fridays from 11AM to 2PM.

Open adult and teen play on Wed., from 6-8PM.



TOPS: TAKE OFF POUNDS SENSIBLY

A Weight Loss Support Group, Tuesdays 5:45-7PM

Drop in to preview or call Dorothy at 713-723-4441 or Naomi at 713-988-2233

Westbury Pool

**CLOSED
UNTIL MAY
2017**



10605 Mullins
City of Houston Pool

Dick n' Sons Floor Covering Center

6240 Bissonnet, Houston, Texas 77081

713.981.1900

www.dicknsons.com

Serving Westbury over 40 Years!



Fine Floor Coverings
for Every Budget

**Carpet, Cork, Laminate, Vinyl, Hardwood,
Ceramic Tile & Countertops!**

M-F 8-5 Thurs. 8-7 Sat. 10-4
6 Months No Interest Financing

What's Happening in Westbury

Events/Meetings Calendar JANUARY 2017

Mon	Happy New Year! WCC Office Closed
Wed. 4	HISD Back in School from Winter Break
Tues. 10	SW Houston 2000 Bi-Monthly Breakfast 7:15AM HBU Morris Cultural Center Speaker: Mayor of Houston, Sylvester Turner
Sat. 14	Conservation Tree Planting Day at Willow Waterhole 9AM The Gathering Place—5310 S Willow See page 13 for more information
Mon. 16	Martin Luther King, Jr. Day - Federal Holiday WCC Office Closed
Mon. 16	Brays Bayou Association Meeting 7:30PM The Gathering Place—5310 S Willow
Wed 18	WAIC/Super Neighborhood #37 Meeting 8:30AM Salem Lutheran Church— 4930 W. Bellfort
Wed. 18	Westbury Civic Club Board Meeting 7PM Westbury Baptist Church—10425 Hillcroft
Sat. 21	Audubon Society Bird Survey 8AM Meet at the Gathering Place parking lot 5310 S. Willow
Sat. 21	Grand Opening of WHS Baseball fields 10AM More information on page 16
Tues 24	SW PIP (HPD Positive Interaction Program) Meeting
Sat. 28	Westbury Arbor Day 9AM Westbury Park See page 13 for more information
Sat. 28	Family Fun Day at the Platou Center

PLANNING CALENDAR

February 1— Assessments due for

Parkwest 1 & Parkwest 2

February 5— SuperBowl in Houston



Heavy & Recycling Trash Calendar

January 2017

Thurs 5	Curbside Recycling All of Westbury	NO GLASS
Thurs 12	Heavy Trash- TREE WASTE ONLY ALL OF WESTBURY	
Thurs 19	Curbside Recycling All of Westbury	NO GLASS
Thurs. FEB. 2	Curbside Recycling All of Westbury	NO GLASS

February 2017

Thurs 2	Curbside Recycling All of Westbury	NO GLASS
Thurs 9	Heavy Trash- JUNK WASTE ALL OF WESTBURY	
Thurs 16	Curbside Recycling All of Westbury	NO GLASS

Important Trash & Recycling Info

- ♻️ Regular trash pickup is every Thursday. Recycling is every other Thursday. Heavy Trash is once a month, 2nd Thursday.
- ♻️ Trash cans need to be on curb by 7AM each Thursday
- ♻️ Trash cans must be removed by 10PM each Thursday
- ♻️ Trash cans must be placed at least 3 feet apart
- ♻️ Trash cans must be stored out of sight.
- ♻️ Yard waste **MUST** be in correct biodegradable bags
- ♻️ Heavy trash can be placed starting at 6PM the Friday before pick-up
- ♻️ **YARD WASTE** is not considered tree waste. It is collected on regular Thursday trash day
- ♻️ Call 311 for all trash questions and complaints
- ♻️ Nearby Trash Depositories and Recycling Centers: **SW Trash Depository/Recycling Ctr**
10785 SW Frwy / Hours: Wed.—Sun. 9AM to 6PM;
Accepts Junk Waste, Tree Waste & Recyclables.
- ♻️ **Environmental Service Center - 11500 S. Post Oak**
Hours: Tues/Wed 9AM-3PM; 2nd Sat 9AM-1PM.
Accepts Hazardous Household & Electronic Waste.
- ♻️ Refer to www.westburycrier.com or www.houstontx.gov for more trash and recycling information

City of Houston Heavy Trash Schedule

January	Tree Waste	February	Junk Waste
---------	------------	----------	------------

2016 Accomplishments

Our purpose, as set out by the WCC bylaws is: "to improve the appearance of the Westbury area and promote the civic, cultural, educational, health, and general welfare of the residents of the Westbury and Parkwest subdivisions." The Westbury Civic Club is a volunteer organization made up of Westbury residents who give their time and energy to make Westbury a great place to live. We thank our office manager (the only paid position), Jennifer Edmondson, for all her support of the board and the residents of Westbury.

HIGHLIGHTS

WCC Awards and Recognition

Perhaps our greatest achievement of 2016 was the yearlong celebration of our 60 years as an active Civic Club. The **WCC received recognition from the City, County and State.** Keep Houston Beautiful recognized these efforts by awarding the WCC with their **Distinguished Neighborhood Award.** The party held in celebration of our 60th Anniversary in October was an incredible event. The historical information gleaned from the past Criers and the scrap books, kept in the early years by the WCC office, were invaluable. Having an office and being able to readily access information spanning 60 years is an incalculable benefit.

Sixty Wonderful Years

Westbury Civic Club

Support for our Residents

Notary service: Hundreds of residents took advantage of the free notary service. **White Elephant sale:** We held two successful sales so residents could sell their unwanted items without having garage sales. **311 Follow-up:** The WCC office tracks and follows up on 311 calls through a monthly 311 report.

Parks & Esplanades

The WCC continued its work in the parks and on the esplanades through its greenspace team. **Hager Park:** Trees were planted and mulched during Keep Westbury Parks Beautiful Day in April. **Westbury Park:** A fence was installed along Willowbend. We thank CM Larry Green for getting this fence done! More plants were added to the butterfly garden. 30 star jasmine were planted along the fence line where the new bus lane will be installed. **Willow Waterhole:** The 4th Annual Willow Waterhole Music Fest was a great success and the WCC was one of the sponsors. The plans for the Dabney Kennedy Scout Pavilion and Circle were unveiled at the 2016 Music Fest and we look forward to that amenity being installed. **Trails:** Neighborhood to Trails-SW is working on trails and Eugene Siris is representing Westbury in that endeavor. Allen Potvin and Kevin O'Brien continue maintenance on the flood control easement trails throughout Westbury. **Esplanades:** 60 trees were planted as part of the Arbor Day celebration in January. 30 pine trees were planted at Hillcroft and West Airport. The WCC helps maintain all 7 miles of esplanades in Westbury by adopting sections, supplemental mowing, tree trimming, and special projects.

Security

The Westbury Area Patrol consists of 4 officers. Our WAP sergeant coordinates with the WCC Security Director to oversee the Westbury patrol program. An added feature each month in the Crier is an overview of the calls received. The WAP Constables averaged 650 calls a month in 2016. The Westbury HPD storefront continues to help with thorny issues through the DRT program (Differential Response team).

Flooding

Mitigating flooding continues to be a focus of the WCC. Public Works repaired several outfalls along the Willow Waterhole Bayou. Members of the WCC serve on a BOMD Infrastructure Committee which is working to create more upstream detention. Westbury and Maplewood SN worked together to get the City to address issues along Rampart and Willowbend.



Rampart drainage

Advocacy

We strongly advocate on behalf of all of Westbury. We work closely with our city elected officials as well as with the city departments. From reps attending Mayor Turner's inauguration and serving on a transition committee, to his speaking at our annual meeting in September, Mayor Turner has been aware of the issues that face Westbury. District K, led by CM Larry Green and the rest of his staff, are incredibly responsive. We work at the county, state and federal levels, too. US Congressmen Al Green and Gene Green hosted a press conference in Westbury on the banks of the Willow Waterhole Bayou to advocate for federal money to alleviate flooding not only in the Brays Bayou Watershed, but throughout Houston.



WCC President Becky Edmondson at the WCC Annual Meeting with Mayor Turner

Plumbco
Plumbing
713-725-5025
MPL#17021
your neighborhood plumber

For all your
Plumbing
Installations
and Repairs

www.plumbcohouston.com

2016 Accomplishments

Neighborhood Organizations

In addition to serving on the WCC board, WCC board members serve on important boards such as the Westbury Super Neighborhood, the WAIC, the Westbury Community Garden, the Friends of Westbury High School Foundation, the Willow Waterhole Greenspace Conservancy, Friends of Levitt Pavilion-Houston, SWHouston 2000, the Brays Oaks Management District, the Brays Bayou Association, the Houston Clean City Commission, Neighborhood to Trails SW, and the Super Neighborhood Alliance.

Commercial Properties

The WCC monitors the adjacent commercial properties and either works directly with the owners or through the City. We worked and continue to work with Neighborhood Protection, HPD, the BOMD and the Harris County attorney's



WCC working with City on drainage concerns in Westbury

office on several commercial properties in order to get them into compliance. We were pleased that the Purple Heart truck, that has been plagued with illegal dumping, has come up with a solution to curtail this problematic and trashy area by installing a fence around the property. Portions of Westbury Square were demolished in 2016 and we continue to work with the City and the owner.

Solid Waste

After flooding again on Tax Day 2016, the WCC worked closely with Solid Waste to get the flood debris trash picked up.

City Infrastructure

Hillcroft Expansion: The WCC created a petition at change.org that helped to serve notice to Public Works that a proposed project to expand Hillcroft into a 6-lane roadway was an UNPOPULAR idea and the plan was amended. For now, Hillcroft will remain 4-lanes. **Hillcroft Bridge**

Repair: After many months of delays, the repair work is finally completed on the bridge over the Willow Waterhole bayou at Hillcroft.

Sanitary Sewers: The WCC reported sewer issues at the CIP meeting in 2014. All of the sewers in Westbury are being scoped and evaluated.

Most of the sewer lines have been repaired or replaced throughout the neighborhood but work is ongoing in some sections.

Roadwork: We continue to advocate for street repairs and replacement. After years of requesting that Willowbend be fixed, the City started the asphalt overlay project in late 2015 and which was finally completed mid 2016. The street is nice and smooth and the biggest problem is now the speeding on this 30 MPH road.

Civility Ordinance: The WCC is part of the Greater South Post Oak/West Bellfort coalition that has been working to end aggressive panhandling along South Post Oak. Enough signatures were collected on a petition to ask the city to create a civility zone in District K. The petition is now in the hands of District K and we will know more next month.



Brays Oaks Management District Meeting discussing infrastructure in our area



DON'T MAKE A MOVE WITHOUT SUSAN BROCK

STOP. The first thing to do if you're thinking of buying, selling or leasing is call **Susan Brock**. Look no further, Susan is a neighbor *and* a neighborhood expert that generates an average sale price at 99% asking price in an average of just 36 days on the market.

Susan sells more homes in Westbury than anywhere else in town. With more than 15 years experience as a licensed Broker and Realtor[®] you might say she's been around the block.

Houston Area Realtors (HAR)
Top 20 Under 40

Texas Monthly 5 Star Professional
5 years in a row

5 Star Client Experience Rating
★★★★★

BROCK *and* **FOSTER**
> Real Estate

www.BrockandFoster.com 713.922.0877

Special Trash Feature

2017 Monthly “Junk Waste” or “Tree Waste”

Unlike many cities, the City of Houston provides residents with FREE curbside monthly heavy trash collection, alternating “TREE WASTE” collection months with “JUNK WASTE” collection months. The collection cycle is the same every year, as shown below. **ALL of Westbury is picked up on the 2nd Thursday of each month.**

TREE WASTE MONTHS	JUNK WASTE MONTHS
January	February
March	April
May	June
July	August
September	October
November	December

What is “Junk Waste”?

“Junk Waste” includes furniture, appliances, lumber, fencing, and other bulky items (including tree waste, but the tree waste would then be sent to landfill rather than mulched). **The city will NOT collect bagged yard waste placed in improper bags during a Junk Waste month.**



What is “Tree Waste”?

“Tree Waste” consists of tree limbs, shrubby limbs, or branches of trees and shrubs. If the Tree Waste has other types of materials mixed in with it, then it is no longer Tree Waste. Lumber, fencing and similar materials are NOT considered Tree Waste. During a Tree Waste month, only Tree Waste materials will be collected.



What is “Yard Waste”?

“Yard Waste” consists of leaves, grass clippings, small yard trimmings or branches. Yard Waste must be in a city-approved bag, or small branches bundled (tied) into a pile less than 4 feet long, less than 18 inches in diameter, and less than 50 pounds in weight. “Yard Waste” is picked up every Thursday.



Trash Can Placement

Household garbage must be put inside the city-provided container which should be placed at the curb between 6PM Wednesday evening and 7AM Thursday morning. The container must be accessible to the automated collection truck and not blocked by obstacles, including parked cars. Homeowners with multiple trashcans MUST place trashcans three (3) feet apart. Do not place cans next to light poles or trees. The city has started tagging cans that are placed incorrectly. Homes on corners must place their trash cans on the front street (not side). Trash cans must be removed from the curb by 10PM Thursday.

TRASH CAN PLACEMENT EXAMPLES



Too much trash this week? Buy “tags for bags” from Fiesta, HEB and participating Kroger stores to get your extra bags of trash picked up. Cost is \$ 2 per tag, plus tax.

What goes in the large green bin? Recyclables such as steel or aluminum cans. Paper. Certain plastics, not # 6. Glass IS NOT allowed in the large recyclable bins. Recycling is picked up every other Thursday. See page 10.

Where can I recycle glass?

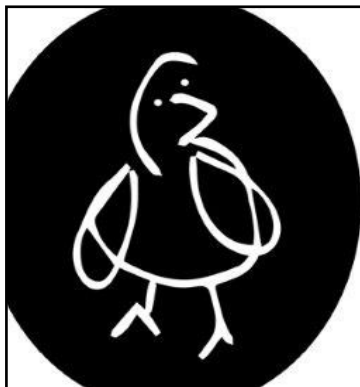
Glass can be recycled at Westbury United Methodist off W. Belfort in the new glass recycling bin provided by the City.

What goes in the large black trash bins?

Household garbage such as personal trash and food waste are to be placed in the large black trash bins. Household garbage day is Thursday. No yard waste, dead animals, household hazardous waste, or electronics are allowed.

Trash Reminder App

The City of Houston Solid Waste Department has a free app for smartphone users, Rollout! It is available for Androids and iPhones. Insert your address, set reminders and never forget when trash day is! The app will send notifications to your phone to remind you when to recycle trash, regular trash and even heavy trash.



Are you looking for a reliable dog walker or pet sitter for while you are at work or on vacation??

Boon Pet Care
is here for you!

As Westbury residents, we are committed to taking the very best care of our neighbors' loved ones.

Check out our website for pricing and details: www.booncare.com

Or contact us today: booncare@gmail.com or 713.936.2623

Special Trash Feature

Environmental Service Center – South 11500 South Post Oak - between Gasmer and South Main Recycle and Household Hazardous Waste

Various household hazardous waste is accepted such as anti-freeze, fuel, oil, paint, paint thinner, pesticides, herbicides and household cleaners. Residential electronic scrap items will also be accepted (monitors, televisions, printers, keyboards, mice, scanners, fax machines, telephone handsets, VCRs, CPUs, cellular phones and other small consumer electronics). These items should not be placed on the curb with or in your container for collection with garbage or heavy trash pick-up. **The center is open every Tues. and Wed. from 9AM to 3PM and the 2nd Saturday of the month from 9 AM- 1 PM.**



Items that can be taken to the Environmental Service Center

Reuse Chemical Take Away (FREE)

The City of Houston's Environmental Service Center South offers free paint and household chemicals. Located at **11500 South Post Oak Road**, the Center is open for reuse chemical distribution on **Fridays from 9AM to Noon**. First come, first served.

ReStore (Craft Items, Books, Post Consumer & Industrial Scrap - FREE)

The ReStore, which acts as a book swap, recycling info library, as well as a repository for craft items and post consumer and post industrial scrap (useful for art projects). Located at **11500 South Post Oak**, items can be taken away from **9AM - Noon every Friday** during the Reuse Chemical Take-Away.

Holiday Do NOT Recycle List

Here are some of the holiday items that should NOT be placed in your recycle bins. Either they are not processed at our city recycle centers, or they wrap around the machinery and create processing problems.

- ⇒ **No Holiday lights**
- ⇒ **No gift wrapping paper, ribbons, trim, and bows**
- ⇒ **No Yard inflatables**
- ⇒ **No Clothing (including Ugly holiday sweaters)**
- ⇒ **No Batteries. (Note. Put alkaline batteries in the trash. Take rechargeable batteries to the local Environmental Service Centers at either S. Post Oak or Westpark)**



Visit rorr.com or follow Waste Management on Twitter @WasteManagement to learn more about what should and should not go in your recycle bin.



Southwest Neighborhood Depository & Recycling Center (for Heavy Trash Drop-off)

**10785 Southwest Freeway Houston, TX 77074
Phone: 713.541.1953**

This facility accepts Junk Waste, Tree Waste and Recyclables at no additional charge to City of Houston residents. Citizens may use the depositories four times per month. You must provide a Texas Driver's License or ID and a current utility bill or city property tax receipt. **The depositories will also accept the following items:** Furniture, Tree limbs, Stoves, Refrigerators, etc., 10 auto tires (Rims Not Accepted)
Open Wednesday - Sunday, 9AM to 6PM.

Westpark Recycling Center

5900 Westpark

This facility is a drive through operation so you do not have to unload your vehicle.

The center accepts: aluminum and tin cans, oil filters, used tires, computers, #1-7 plastic containers, GLASS bottles and jars, telephone books, office paper, cardboard, magazines, and used motor oil. Newspapers placed in a brown bag will also be accepted.

Open Monday- Saturday from 8AM to 5PM.

Reuse Warehouse

9003 N. Main St.

The facility accepts material from individuals, supply companies, and builders, and makes it freely available for reuse by any non-profit organization.

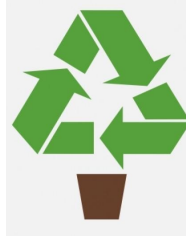
Open Tuesday thru Friday from 8:30AM to 4:30PM and every 2nd and 4th Saturday of the month from 8:30AM to 4:30PM

Trash Violations

Violation of any provision of the solid waste ordinance is punishable upon first conviction by a fine of no less than \$50 nor more than \$2,000. Each subsequent conviction is punishable by a fine of no less than \$250 nor more than \$2,000. Each day that any violation continues may be punishable as a separate offense. **To report a violation or to file a complaint, call 311.** Solid Waste Management Department Supervisors can write citations.

CHRISTMAS TREE RECYCLING

The City Of Houston will pick up Christmas trees from the curb in January on Heavy Trash Tree Waste Day, January 12.



The trees must have all decorations, ornaments, tinsel, lights and stands removed. Flocked trees cannot be recycled. Christmas trees may also be dropped off at the Westpark facility as well as the Southwest depository.



**RECYCLE OFTEN.
RECYCLE RIGHT.™**



Always recycle:



Plastic Bottles & Containers



Food & Beverage Cans



Paper



Flattened Cardboard & Paperboard



Food & Beverage Cartons

Do NOT include in your mixed recycling cart:



NO Food Waste
(Compost instead!)



NO Plastic Bags & Film

(Find a recycling site at plasticfilmrecycling.org.)



NO Foam Cups & Containers

(Check Earth911.org for options.)



NO Needles

(Keep medical waste out of recycling. Place in safe disposal containers like Waste Management's MedWaste Tracker® box.)

**To Learn More Visit:
RecycleOftenRecycleRight.com**

#RORR

© 2014 Waste Management, Inc. The Recycle Often. Recycle Right.™ recycling education program was developed based upon national best practices. Please consult your local municipality for their acceptable materials and additional details of local programs, which may differ slightly.

Why Pay the Voluntary Dues?



MELTON'S HOME IMPROVEMENT

CRAIG MELTON

713-393-9704
CRAIG.MELTON@ATT.NET

20+ YEARS EXPERIENCE
ACCEPT MOST MAJOR CREDIT CARDS

Westbury Resident

PAINTING - FLOORING - KITCHENS - BATHROOMS - SHEETROCK
ROOFING - SIDING - CARPENTRY - PRESSURE WASHING

Maxx Gonzalez

El Arte D'Pintar
Expert Int./Ext. Paint

832-212-0739

maxx@maxxgonzalez.net
www.maxxgonzalez.net



- ◆ Sheetrock Repair
- ◆ Stain
- ◆ Fancy Texture
- ◆ Walls
- ◆ Faux Finishing

What Does \$28 a Month Accomplish?

The Westbury Voluntary dues are \$335 a year or just \$28 a month. We need EVERYONE to participate.

- ❖ Protects your investment in your home by keeping Westbury a strong and vibrant neighborhood.
- ❖ Keeps the doors to your Civic Club office open and staffed. The WCC has an office with records and historical data dating back to 1956. The Westbury Crier has been bringing news that affects our neighborhood to your doorstep EVERY month since 1956. Right now the WCC has one employee. As an example, Meyerland, with half the homes, has 3 employees and they outsource their publication. We would love to see enough participation to hire another employee. The office provides free notary service to members and works as a liaison for residents on issues with the city.
- ❖ Enforces deed restrictions.
- ❖ Protects your home and family with the Westbury Area Patrol through Constable Pct 5. We currently have 4 deputies. We need YOUR participation to be able to fund this 4th deputy. The past three years we have not raised sufficient funds to pay for the security patrol and have had to dip into reserves.
- ❖ Improves the looks of our esplanades, parks, and green spaces. The WCC has planted hundreds of trees and given away thousands more. We have a contract with a landscape service that mows the areas that the City or TxDot or others do not mow in public right of ways.
- ❖ Advocates for city services & infrastructure improvements.
- ❖ Hosts two White Elephant Community Garage Sales each year!

For \$28 a month, this membership is a bargain and a great way for you to invest in the neighborhood. Won't you join us in making Westbury the very best neighborhood that it can be?

PERUVIAN RESTAURANT

- Ceviche
- Rotisserie Chicken
- Papa Rellena
- Lomo Saltado
- Bistec a lo Pobre
- Jalea de Pescado
- Saltado de Camarones
- Empanadas

Presentando este Cupón

01 Side Order

GRATIS

Ceviche

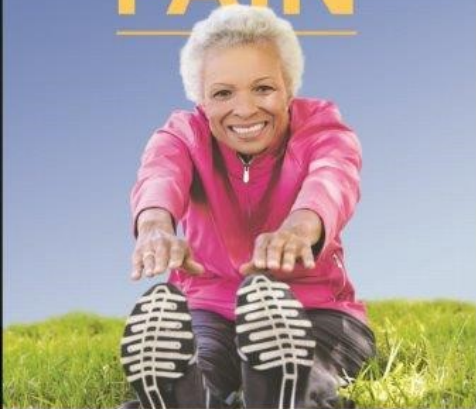
Lomo Saltado

Pollo a la Brasa

Dirección: 10804 S Post Oak Rd #375, Houston, TX 77035
Teléfono: (281) 888-3931

TAKE ACTION
AND OVERCOME

JOINT PAIN



Contact a Memorial Hermann Joint Center. And start living pain free.

Staying active is key to staying healthy. That's why Joint Center specialists use the most advanced treatments to get you moving again. From new prescription options, to minimally invasive surgical interventions, our affiliated body of experts is ready to help you find the best path to the life you want to live.

Call 713.272.1888 or visit jointpain.memorialhermann.org for more information or to make an appointment.

MEMORIAL
HERMANN
Joint Center

ADVANCING HEALTH

HCC Brays Oaks Campus Open January 2017

HCC Brays Oaks Campus Ribbon Cutting

Westbury now has a Houston Community College (HCC) campus located just minutes from us in the 8000 block of West Bellfort. On December 6, more than 150 people packed the entrance of the 28,000 square-foot, LEED Silver Certified building to celebrate its official ribbon cutting of the new HCC campus in the Brays Oaks District. The HCC Brays Oaks Campus is located at 8855 West Bellfort Avenue just west of South Gessner. The City of Houston Housing and Community Development Department gave HCC a \$700,000 Block Grant to help fund the \$12.4 million project.

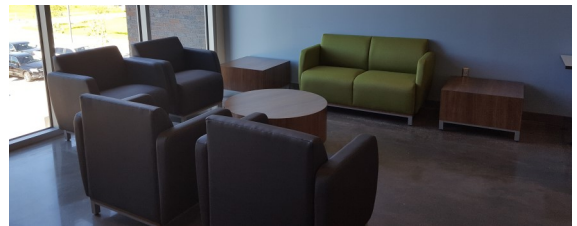
HCC officials, city and community leaders, along with residents, saw the new workforce building as an investment in a community. "One of our longtime goals was to get a community college to our area," said Richard Rodriguez, executive director of the BOMD.

The HCC Brays Oaks Campus will offer continuing education courses that support a curriculum of training in GED, ESL, information technology, and health education fast-track programs. The Information Technology courses include A+ Certification, Network+ Certification, and MS Office Suite

classes. Healthcare classes include Phlebotomy Technician and CPR Training classes. The Brays Oaks campus will also offer classes in Property Management.

"We want to help students transition into a 21st Century college education," said Dr. Cesar Maldonado, HCC chancellor. "Academics are critical to student success, but finding careers with job opportunities is what is going to bring success to families."

Classes will be starting in January 2017, so drop by or call if you are interested in finding out more information and don't see it on the website. This HCC campus location on W. Bellfort is so new that it does not yet show up on some HCC brochures, nor is it easily found on the HCC website. The phone number for the new location is 713.718.8647. The W. Bellfort METRO bus line directly connects the Westbury area to the newest HCC campus at 8855 W Bellfort.



St. Thomas More Parish School Early Childhood Programs



- ◆ Accredited Preschool for 3 & 4 year olds
- ◆ Monday/Wednesday/Friday & Monday-Friday Classes
 - ◆ Full Day & Half Day Options
 - ◆ Before & After School Available
- ◆ 2016-2017 Registration NOW OPEN



Every child is unique and a valuable individual.

Let us provide the beginnings of a Catholic education with LOVE.

LOVE provides security. LOVE gives a quality education. LOVE is a glimpse of God.

5927 WIGTON DR.



HOUSTON, TX 77096



713-729-9062



WWW.STTHOMASMORE-SCHOOL.ORG

Westbury Events

Urban Harvest 17th Annual Fruit Tree Sale

January 14, 9 AM-1PM

Rice University — 5600 Greenbriar Dr.

Do you want to make your yard more productive? Plant a fruit tree this month! Urban Harvest hosts the largest single-day fruit tree sale in the country. Join them for their 17th annual sale. Explore over one hundred varieties and thousands of fruit trees that are acclimated to the conditions in our area.

Visit www.urbanharvest.org for more info and to see their schedule of classes coming up on fruit trees. Westbury's own Ray Sher will be one of the instructors at the pre-sale talk on Jan. 7.

NOTE: Citrus may only be transported to Harris, Montgomery & Fort Bend Counties.

Come early - Trees sell fast!

Westbury Arbor Day 2017

Westbury has a tradition of planting trees every year for Arbor Day. This year there will be TWO Arbor Day tree planting events in the Westbury area. Trees and materials for both of these events are being provided courtesy of the National Football League (NFL) and Trees For Houston.

You might be surprised to learn that the NFL is involved in a tree planting event here in the Westbury area. How did that happen? Houston is the host city for Super Bowl 51 that will take place February 5, 2017. The NFL provides grants for urban forestry projects in Super Bowl host cities. The Willow Waterhole Greenspace Conservancy applied for and was awarded a grant to plant trees!



January 14 - Conservation Workday at Willow Waterhole

Meet at "The Gathering Place", 5310 South Willow. 9:00am-12:00pm. Trees will be planted at "Levitt Lake" near Southern Crushed Concrete.

January 28 - Westbury Arbor Day

Meet at Westbury Park (next to Parker Elementary School) on Stillbrooke 9:00am-12:00pm. Mulching, planting, pruning, and some painting.

Do Not Blow Your Leaves into the Storm Drains!

As you have no doubt witnessed, Houston has occasional street flooding. Streets in Houston are designed to be channels for the rising water to gather into and then allow the water to flow into the storm drains. The rain water drains away and eventually ends up in Galveston Bay. Houston homes are set on higher ground, ideally, to keep them from flooding.

If you, or your hired lawn crew, blow leaves and debris into the storm drains, then the drain lines will be obstructed, resulting in slow draining and potential flooding. Though you might think your area is safe, there is a cumulative effect which can affect all of us since the drains are connected. Please bag your excess leaves or compost them on property.



HoustonLandscaping
Since 1989

Residential & Commercial

- Landscape Design
- Garden Design
- Sprinklers & Drainage
- Hardscape
- Patios & Outdoors
- Curb appeal

(713) 701-9193

Houstoncitylandscaping.com



**Cracks? Sloping?
Concerned about
your foundation?**

- High End Quality Work at Very Competitive Pricing
- Very Detailed and Comprehensive Evaluations
- 0% Interest for 12 Month Financing (with your good credit)
- Highest Ratings on Search Engines and Contractor Sites
- Westbury resident for 8 years
- A+ Rating With BBB

Call me today for a **free**
evaluation of your home!
(281) 435-6065 - direct

lonnie.parker@permapier.com



Lonnie Parker
Senior Foundation Analyst

Crime & Security

Crime Statistics for Westbury Super Neighborhood 37* 30 days December 15, 2016

	Single-Family Home	Apt/Condo	Commercial Property	Public Areas	Totals
Burglary	10	1	2	0	13
Theft	4	4	5	7	20
Auto Theft	2	6	0	0	8
Robbery	1	2	1	1	5
Assault	2	1	0	0	3
Rape	0	0	0	0	0
Murder	0	0	0	0	0
TOTAL	19	14	8	8	49

*Area bounded by: S. Post Oak, US 90/S. Main, utility easement north of Willowbend and drainage bayou, west of Braewick

Single Family Residential Crime

Locations by block number, not exact address. Stats for 30 days preceding Dec. 15, 2016

Block #	Street	Crime
12300	Atwell	Theft
5800	Cartagena	Burglary
6000	Cerritos	Burglary
10700	Chimney Rock	Burglary
5600	Dryad	Robbery
5800	Dryad	Auto Theft
5600	Greencraig	Burglary
10900	Hillcroft	Assault
11100	Hillcroft	Theft
11500	Hillcroft	Theft
5000	Kingfisher	Burglary
5800	Ludington	Burglary
5400	Spellman	Theft
5800	Southminster	Auto Theft
6000	Vickijohn	Assault
5900	W. Airport	Burglary
5800	W. Bellfort x2	Burglary
5400	Willowbend	Burglary

Don't forget Vacation Watch!

For residents who pay the WAP patrol dues, a special Vacation Watch may be requested from Pct 5. The form is available online. Sign up at www.constablepct5.com/vacation-watch/ If you want to request a Vacation Watch, but do not have access to a computer or internet, please call 281-463-6666 for assistance.



Westbury Area Patrol 281-463-6666
Westbury HPD Storefront 832-394-7520
HPD Non-Emergency 713-884-3131

Stay Safe in Westbury

Every month we publish the crime statistics from the Westbury Area Patrol and those that we get from the City of Houston reports. What can you do to help lessen your chance of becoming a statistic?

- Be aware of your surroundings.
- Know the number for the Constables, 281-463-6666
- Know your neighbors and who belongs on your street.
- Call in suspicious person(s) to the Constables
- Always lock your vehicle.
- Park in your garage, if you can.
- Do not keep/leave anything of importance or valuable in your vehicle **anywhere**.
- Report all break-ins to the Constables, even if nothing is taken. This will be helpful in establishing patterns and getting extra patrols if they are needed.
- Pay your 2017 Dues! The WCC pays over \$300,000 a year for the WAP Constables protection, all from money collected from residents. That is why paying your dues is so important.



Since 1980, Westbury has contracted with Harris County Precinct 5 to provide deputies to patrol our neighborhood. We refer to this as the Westbury Area Patrol (WAP). The WAP provides 3 deputies and one sergeant, who give us a more visible police presence as well as timely response to calls for service. The WAP program is the one of the most important programs of the WCC.

WAP Constable Calls

Below is the breakdown of top 10 calls for November 2016 in the Westbury Contract for the Pct. 5 Constables.

Thank you to everyone who contributed to the Westbury Area Patrol this year. We need everyone to support this great program. The 2017 dues form is located on page 17. Send in your dues today. The amount requested is \$285 for the Constables, but any amount will help. Thank you!

Contract Check (General)	366
Vacation Watch	54
Suspicious Vehicle/ Person	44
Local Alarms	22
General Disturbances	16
Information	12
Meet the Officer	16
Welfare Check	5
Traffic	47
Theft	7
Other	48
Total	637

Neighborhood Partnerships

Westbury Represented on Planning Commission Subcommittee

Cindy Chapman will represent the Westbury Super Neighborhood in 2017 as a member of the Planning Standards Committee of the Planning Commission for the City of Houston. This committee will be reviewing and making recommendations regarding Chapter 42 and will start meeting in January 2017. Chapter 42 applies to all development and subdivision of land within the city and its extra-territorial jurisdiction. This chapter establishes the general rules and regulations governing plats, subdivisions and development of land within the city and its extraterritorial jurisdiction to promote the health, safety, morals and general welfare of the city and the safe, orderly and healthful development of the city. Chapman was nominated by District K City Council Member Larry Green to serve on the committee.

This committee will have two primary responsibilities:

- ❖ Consider and make recommendations on potential changes to the planning standards of Chapter 42 of the City's Code of Ordinances and related sections in other chapters of the Code; and
- ❖ Consider and make recommendations on establishing a predictable process for regularly reviewing and making revisions to development codes administered by the Planning & Development Department and under the purview of the Planning Commission.

SW Houston 2000 Volunteer Breakfast

A great time was had by all at the Brays Oaks Volunteer Appreciation Breakfast on Thursday, December 8. This annual event is hosted by the Brays Oaks District and SW Houston 2000 to thank individuals in our community for all of the volunteers' efforts and good causes they support throughout the year. A full contingent of Westbury volunteers was on hand to watch the following people receive their awards. Congratulations to all!

- * Fiesta Store Manager George Nwanguma (pictured below) accepted an award on behalf of Pablo Carrillo, Director of Area Operations for Fiesta
- * Greg Meyers, retiring as a Board Trustee for Houston ISD
- * Cheryl Riedl, a volunteer at Memorial Hermann SW Hospital
- * Reginald Lewis, President of Richmond HOA was recognized for his volunteer efforts for Super Neighborhood 41
- * Eddee Hestand, Chaplain with the Police and Clergy Alliance (PACA),
- * Mike Terry, with Braes Interfaith Ministries(BIM) for his efforts managing and ordering food for the food pantry
- * Sherri Cortez, from the Glenshire subdivision for her volunteer work with the Brays Oaks Management District



RALPH RIEGER, CPA

We believe in service above Self!

Giving our clients peace of mind with sound tax planning and financial advice, effectively representing them in dealing with the tax authorities, and timely, tender, loving care in preparing their tax returns. Helping Texas business owners make their dreams come true by helping them create extraordinary businesses.



11415 Chimney Rock rieger@riegercpa.com 713-729-1122

Commercial ♦ Residential ♦ Auto Glass

DISTINCTIVE GLASS

Phone: (713)981-0200

9541 Town Park Dr.

Fax: (713)981-4193

Houston, TX 77036

Email: dist@clear.net

www.distinctiveglassonline.com

Vonnie Cobb Realtors, Inc.



*Your
Neighborhood
Realtor for
40 Years!*

Family owned and operated.
Pictured Vonnie Cobb and
Shannon Cobb.

**Call us today for your
FREE Market Analysis!
713.664.1818**



Professionalism with a Personal Touch

www.VonnieCobbRealtors.com • 4842 Beechnut • Houston, Texas 77096

Westbury Area News

Grand Opening of the Westbury HS New Baseball / Softball Complex

Come out to the ball field on Sat., January 21 at 10AM.



Activities will include a Homerun Derby Fundraiser and a Faculty vs Students Slow Pitch Softball Game.

You may purchase a Sponsorship banner in support of the Westbury High School Baseball and Softball teams. Visit westburyhuskiesbbc.com for more info.

Westbury High School Student Completes Restoration of Street Posts

Abel Herrera, a senior at WHS, completed the restoration of four additional concrete street posts in November. Two are on Creekbend – at Torchlight and Endicott, and two on Fontenelle – at Atwell and Landsdowne. All four were extremely crooked, so the first task by Abel was to excavate the soil three feet deep to straighten. He then cleaned, painted, and sealed the posts. See pictures below.

As part of a Westbury 60th Anniversary project, eighteen posts have now been restored. Please let Jennifer Edmondson know of any posts that may have been missed.



Westbury Square Update

In early 2016, the building that fronted West Belfort (which burned in June of 2010) was finally demolished. The rest of the Square remains in its dilapidated state. In a conversation in December, Becky Edmondson spoke to the owner, Mr. Al Antonini, who indicated there were plans to demolish more of the buildings this year, but no date was given.

As we put together the history of Westbury for its 60th anniversary, we were reminded time and time again of the unique vision that Ira Berne had for Westbury and his beloved Westbury Square. Thankfully the demise of the Square did not spell doom for the surrounding neighborhood, but it's still a shame to think of what became of Westbury Square, once the heart of Westbury.

Links for Lost & Found Pets in Westbury

- Nextdoor Westbury - www.nextdoor.com
- Westbury Lost and Found Pets Facebook - <https://www.facebook.com/westburyhoustontexas?fref=nf>
- Westbury CARE- Contact at westburycare@gmail.com or at www.westburycare.com, Compassionate Animal Rescue Efforts is located in Westbury.

Fiscally Fit.

Sports Physicals start at
\$35

713.691.6493 nextlevelurgentcare.com
Open 9am-9pm, 7 days a week • 9 Convenient Locations

Come on get Appy!

New Next Level mobile app available now!

- Get in line online!
- Avoid the waiting room altogether
- We'll text you when your exam room is ready
- Consult with on-call nurse
- Share app with family & friends



next level
URGENT CARE



2017 Dues/Assessments

ATTENTION: PARKWEST 1&2

Homes purchased in Parkwest 1 after Jan. 1, 1993 and Parkwest 2 after Jan 1, 1994 have mandatory assessments.

The amount of the 2017 Mandatory Assessments is \$233.50. The 2017 Assessments are due by February 1, 2017.

If you have any questions or did not get your invoice, please contact the WCC office at 713-723-5437 or email westburycc@sbcglobal.net.

Mission of the WCC

The purposes of the Westbury Civic Club, Inc. (the "Club") are to improve the appearance of the Westbury area and promote the civic, cultural educational, health, and general welfare of the residents of the Westbury and Parkwest subdivisions in Harris County, Texas (collectively, the "Community").

Why do my dues go to Dallas? Is this correct?

Yes, this is correct! We have you mail your payments directly to our bank's processing center. This allows your payments to be processed immediately.

Why Should I Pay My Dues? What are the Benefits?

- Protects your investment in your home by keeping Westbury a strong and vibrant neighborhood.
- Keeps the doors of the Civic Club office open and staffed.
- Protects your home and family with the Westbury Area Patrol through Constable Precinct 5.
- Improves the looks of our esplanades, parks, and green spaces.
- Advocates for City services and infrastructure improvements
- Hosts two White Elephant Community Garage Sale events each year
- Organizes community get togethers such as Coffee with Constables and National Night Out

Please send this form in with your payment

2017 Westbury Civic Club Dues

By filling out this form, you are giving the WCC permission to send you communications. We DO not sell your information or give it out to other entities.

Name(s) _____
 Address _____
 Home Phone _____ Work _____ Cell _____
 E-mail _____

**Make checks payable to:
 Westbury Civic Club, Inc.**

**Mail to:
 P.O. Box 975182
 Dallas, TX 75397-5182**

**Online payment:
 paypal.com—Send Money to
 westburycc@sbcglobal.net
 Make sure to include your
 address or account number**

Want to send your support in multiple payments? You may choose any

amount to pay in any increment throughout the year.
 Here are a few examples:
 2 payments of \$167.50 is \$335/yr
 3 payments of \$111.67 is \$335/yr
 4 payments of \$83.75 is \$335/yr
 5 payments of \$67 is \$335/yr
 12 payments of \$28 is \$336/yr

Westbury Civic Club Dues*	\$50	\$
Westbury Area Patrol	\$285	\$
Subtotal	\$335	\$
Additional Contributions:		
Westbury Civic Club		\$
Westbury Area Patrol (WAP)		\$
Total		\$

*The Westbury Civic Club Dues encompasses all operations, programs, and services including greenspace, of the Westbury Civic Club, except patrol services.

Thank you for supporting the Westbury Civic Club and our important programs. We can't do it without you!
 To contact the WCC Office, email westburycc@sbcglobal.net or call 713-723-5437.

THE LARRY MERCER TEAM



Are you curious about the value of
your home in today's market?

Call the area specialists today!

Call The Mercer Team!



2626 Richmond Ave Houston TX 77098

New City Street Lights Controversy

New City Street LED Lights Need Improvements: Support Needed *by Deborah Moran*

This is a follow-up to my article in the Crier from September, 2015. Since my last article, CenterPoint has continued installing the new LED street lights throughout the city. The conversion to the new LED lights will save the City of Houston in electricity costs, which we applaud. Even though these new lights give off more "brightness", too much can cause issues. One of the major issues is glare. The "type", or frequency, of light is such that the human eye has trouble processing this light. So the pupils in the eye shrink, thus making objects beyond the light harder to see. How do your eyes react when a car with the new "blue" headlights approach you? Some people like the extra brightness from the lights. That may be because the street light is among trees with leaves. What will it be like in the winter when the leaves fall?

During "National Night Out" we are told to meet your neighbors, learn about security and be aware what is happening in your area. Then, when these lights invade your house, we are told to get black-out curtains. Then we can't see what is happening on our street.

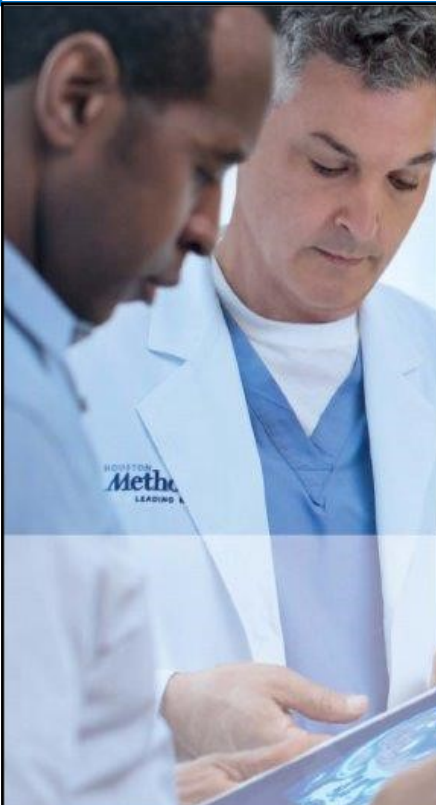
Another issue with the lights is the frequency, also known as color temperature. The current lights are a frequency of 4000 degrees Kelvin. At this frequency the blue part of the color spectrum is very dominate. And this is a similar frequency as the Sun, so we are bringing "daylight" to the night. It has been known for a long time that the human body needs the darkness at night to produce melatonin to repair and heal the body. The American Medical Association, AMA, has recently released a report saying the 4000K lights are not good for the human body. For a summary of the report see this article: <http://www.ama-assn.org/ama/pub/news/news/2016/2016-06-14-community-guidance-street-lighting.page>

Many cities that have initially installed the 4000K lights are now, after resident's complaints, changing the 4000K to 3000K and even 2700K lights. These lights are easier on the eyes and provide better overall lighting for the entire area. With a test on a real street situation the residents overwhelmingly choose the 3000K lights over the 4000K lights. At a recent lighting symposium, the manager of street lighting for Los Angeles, Ed Ebrahimian, said that if Los Angeles was to do this again, they would start with 3000K lights for the roadways and 2700K for residential streets. And this is now the recommendation for all new lighting. New York City is also now installing the warmer LED lights.

We have asked CenterPoint to start installing the lower temperature 3000K lights, but they continue to install the 4000K. If you are against the new lights, please contact your district councilman and the Mayor's office. And sign this petition at Change.org. <https://www.change.org/p/city-of-houston-tx-centerpoint-energy-led-street-lights-feel-like-the-aliens-have-landed-need-better-choice>

Westbury Meet & Eat

Come out to Teotihuacan Mexican Restaurant at 6579 W. Bellfort every 1st Thursday of the month to meet Westbury residents. This event is open to anyone who lives in Westbury.
January Meet & Eat: Thurs., Jan. 5, 6PM



TREATMENT FOR THE MOST COMPLEX NEUROLOGICAL CONDITIONS.

At Houston Methodist Neurological Institute, our physicians collaborate across specialties to diagnose and treat common to complex neurological disorders. As the highest nationally ranked neurology and neurosurgery hospital in Texas, we offer clinical trials and advanced technologies, bringing advanced treatment options to those who have few.

Our team of physicians treats a variety of disorders, including

- ALS and other neuromuscular disorders
- Alzheimer's disease and memory disorders
- Back and neck pain
- Brain and spinal tumors
- Cerebrovascular disease
- Cranial and spinal disorders
- Epilepsy and seizures
- Headaches and migraines
- Movement disorders
- Neuromuscular disorders
- Stroke

HOUSTON
Methodist
NEUROLOGICAL INSTITUTE

houstonmethodist.org/ni
713.441.3850

Willow Waterhole News

Levitt Pavilion Coming Soon

Houston was chosen in 2013 to house the nation's eighth Levitt Pavilion, joining Los Angeles, Memphis, and Arlington, among others. THE MORTIMER & MIMI LEVITT FOUNDATION is a private family foundation founded in 1963. Its mission is to transform neglected outdoor spaces into welcoming destinations where the power of free live music brings people together and invigorates community life.

In December of 2016, after three years of work, the Houston City Council and the Harris County Commissioners Court have both approved the agreement for the Levitt Pavilion to be built at the Willow Waterhole.

What is a Levitt Pavilion? It is an outdoor pavilion that would seat 5,000 on a 3-acre lawn and offer 50 free concerts annually. In addition, the pavilion would be available for other groups to use. Imagine the opportunities for the great music magnet and arts programs at Parker Elementary, Meyerland Performing and Visual Arts Middle School, and Westbury High School. "The Levitt is a dream come true for Houston," said Sacks, chairman of the Friends of Levitt Pavilion Houston. "There is every opportunity for every kind of entertainment to use the pavilion."

The venue is expected to open in 2019. The next steps are to work on the final design and begin fundraising.



Super Bowl Forestry Grant for Willow Waterhole

Congratulations to the Willow Waterhole Conservancy, which has been awarded an Urban Forestry Grant of \$4,000 by the National Football League Environmental Program to plant trees. Super Bowl LI will be held here in Houston in 2017. The Conservancy is making plans for several tree planting events in Jan. 2017. See pg. 13 for more info.

Bob Schwartz With great sadness, we report that Bob Schwartz passed away in November just weeks after the dedication of the Schwartz Gazebo at the Willow Waterhole. Bob was a founding member of the Brays Bayou Association and Willow Waterhole Greenspace Conservancy. He tirelessly advocated and promoted flood control projects in the Brays Watershed, helping in the development of Project Brays and the Willow Waterhole Detention Project. If you would like to honor Bob's many accomplishments, please consider donating to the Willow Waterhole Greenspace Conservancy. Visit www.willowwaterhole.org.



Area Residents and Your Neighborhood Specialists



6031 McKnight
Another One Sold!



JACKIE MURRAY
Cell: (713) 825-9179
jackiem@waynemurray.net



Wayne Murray Properties
Since 1987



KENDYL MAURER
Cell: (281) 904-8199
kendylm@waynemurray.net



5234 Spellman
Another One Sold!

"We sell more, because we do more."
Over 40 Years of Experience!!



5634 Sanford
\$363,000



6022 Ludington
\$259,900



6018 Dellfern
Another One Sold!



6003 Warm Springs
\$299,000

Westbury Community Garden

Westbury Community Garden Thankful for Banner Year



How this past year has flown by—and what a lot to be grateful for at the Garden!

- ⇒ Free classes taught by Urban Harvest, Centerpoint Energy, City of Houston employees, and our own Jasmin Regalado, covering everything from planting a tree, to building a home garden, to Tai Chi
- ⇒ Recognition by the City of Houston in the form of a Certificate of Appreciation from CM Larry Green, for our work in building community
- ⇒ Major donations from Brays Oaks Management District, and CM Larry Green’s office, to cover the expenses of our Master Plan
- ⇒ Grant from Exelon/Constellation/Star-Tex for Pocket Prairie
- ⇒ Grant for Community Building from United Way for our Master Plan
- ⇒ Donations of food from Kattera Exotics, Salata, Panera Bread, and individual gardeners, for garden workdays
- ⇒ Celebrations and parties for Urban Harvest’s Annual Harvest Celebration, Star-Gazing Party by Houston Astronomical Society, Westbury Community Garden Annual Tomato Tasting Event, Plant It Forward Farm Stand Grand Opening
- ⇒ Donation of 8 chairs for Garden
- ⇒ Partnering with Brays Oaks Management District to assist with grounds upkeep for the Garden
- ⇒ Gulf Coast Master Naturalists grant official work site status to Garden
- ⇒ **And volunteers—how we love our volunteers! Students from Westbury High School, Lee High School, Cristo Rey Jesuit High School, individuals from Volunteer Houston, Maribenu employees, and community gardeners put in literally thousands of hours at the Garden during 2016. Thanks to everyone who made this such a successful year!**

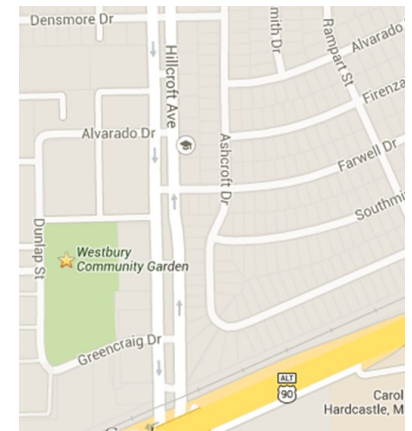
The Houston climate is suitable for growing food every month of the year. Spring gardening time is just around the corner. Do you want to grow your own organic veggies? Join the outstanding gardeners at Westbury Community Garden.

If you are new to organic gardening, the WCG will partner you with an experienced mentor to get you started and offer garden advice when needed. A garden bed at the Westbury Community Garden is approximately 25 ft by 4 ft totaling about 100 square feet of area. Consider inviting a friend or neighbor to share a bed to split the work and the rewards.

Check our website www.WestburyCommunityGarden.org or contact our Membership Chair, membership@westburycommunitygarden.org

WHERE IS THE GARDEN?

12581 Dunlap (77035) is off Hillcroft between W. Airport and South Main. Heading south on Hillcroft, turn right onto Green Craig, follow it around the bend where it turns into Dunlap. The large blue roof on the WCG Pavilion is readily visible. Street parking.



Farm Stand Hours
Saturday: 10AM - 3PM
Sunday: 11AM - 3PM

Water Heaters:
Regular & Tankless

Disposals

Water Lines

Gas Lines

Drain Cleaning

Under Slab Repairs

Re-route kitchen & laundry pipes

ASTRO PLUMBING

Full Service Plumbing and Repair Specialist

713-256-0017

★ **JOHNNY LEWIS** ★

WESTBURY RESIDENT

New Sewer Lines

Hydrostatic Testing

Remodeling & Repairs

Sinks

Faucets

New Drains under Bathroom

M16312 ★ Since 1985

★ Senior Discounts

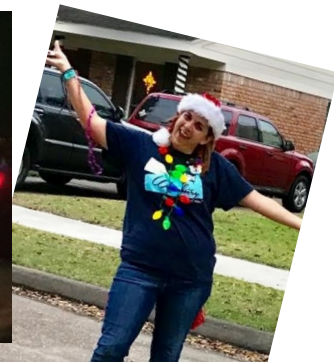
★ All Major Credit Cards

★ Fully Insured

Deck the Halls Parade 2016

Deck the Halls Parade

The 18th annual Deck the Halls parade was a wonderful success! Over a thousand residents lined the streets and many homes hosted holiday get-togethers. The Westbury Civic Club banner was carried by Donna Robert and Marcia Hartman, while Jennifer and Connor Edmondson and Eugene Sirls passed out beads and candy to the waving throngs. Driven by her husband Bill in his 1965 Mustang, Becky Edmondson was dressed as her favorite mythical character ... a mermaid! Following closely behind were the Westbury Community Gardeners, led by Virginia Livingston, with hundreds of pounds of citrus fruit to pass out. There were Art Cars, dancers, Pancho Claus and, of course, Santa Claus, who, rather than elves, had the Westbury High School baseball team with him.



A big thank you goes to the Mandell family for this labor of love. Best parade ever!

JACKIE ZEHL & TERESA LEWIS

SUCCESSFULLY MARKETING YOUR HOME TO THE GREATEST NUMBER OF BUYERS FOR 30+ YEARS

EXPERIENCE IS THE DIFFERENCE

 <p>MAPLEWOOD SOUTH - \$550's 6231 Queensloch 4/2.5/2 + Renovated + Hardwoods</p>	 <p>MAPLEWOOD SOUTH - \$470's 6227 S. Braeswood 4/2.5/2 + Renovated + SS Appliances</p>	 <p>MAPLEWOOD SOUTH - \$450's 5839 Yarwell 4/2.5/2 + Renovated + Granite</p>	 <p>MAPLEWOOD SOUTH - \$390's 5906 Yarwell 4/2.5/2 + Renovated + Granite</p>
 <p>WESTBURY - \$340's 5714 Cartagena 3/2/2 + Renovated + Study</p>	 <p>ROBINDELL - \$340's 5807 Reamer 3/3/2 + Renovated + Quartz Counters</p>	 <p>MEYERLAND - \$320's 5011 Glenmeadow 5/2.5/2 + "As Is" + Kolter + Bellaire High</p>	 <p>WESTBURY - \$319,000 5235 Hummingbird 3/2/2 + Raised Ceiling + Pool</p>

SOLD

9403 Braewick	5801 Ariel
5803 Queensloch	11111 Burdine
11119 Burdine	5707 Braesheather
5302 Braesheather	






JACKIE ZEHL & TERESA LEWIS
713.349.7221 713.349.7227
WWW.ZEHLLEWIS.COM
COLDWELL BANKER UNITED, REALTORS

2016 Holiday Lights & Decoration Winners



Sleighs, reindeer, snowmen, penguins, Teddy bears, Santas, elves, and some huge inflatable figures were all over Westbury. Mickey Mouse is about and even Garfield the Cat. One home had close to "101 Dalmatians" frolicking in the front yard. Another had reindeer harnessed to a VW beetle with Santa in the driver's seat. So many homes have fanciful, colorful "icicle" and plain lights trimming their front roofs and gables. Whole banks of shrubbery are adorned with festive lights. And wreaths! Westbury residents really know how to make the holidays merry!

Thank you all for your time and effort in decorating Westbury so beautifully! Next year we hope to add more categories, such as People's Choice or Children's Favorite. These will be voted on by residents. We would love to hear any ideas or feedback you have. Email Jennifer at westburycc@sbcglobal.net.

BEST HOMES

Westbury 1

- 1st Place: 10910 Endicott
- 2nd Place: 5222 Briarbend
- 3rd Place: 10919 Doud

Westbury 2

- 1st Place: 5234 Creekbend—Bobby & Amy Baber
- 2nd Place: 10814 Oasis—Andrew & Allie Evans
- 3rd Place: 5515 Kinglet—Fred Wich & Carter Mayer

Westbury 3

- 1st Place: 5826 Cartagena—Robert Montgomery & Larry Ellis
- 2nd Place: 5727 Belrose—Jesus Mendoza & Rudy Elizondo
- 3rd Place: 5223 Benning—The Millers

Westbury 4

- 1st Place: 11927 Dunlap—Alan Moehue & Brent Leafgreen
- 2nd Place: 5719 Effingham—Elton Kasper
- 3rd Place: 5715 Ettrick—Kenneth Blakes

Westbury 5

- 1st Place: 10714 Braewick—Mary & Charlie Welch
- 2nd Place: 6035 Vicki John—Connie Montalvo
- 2nd Place: 5523 Sanford—Gregory Schmid

Parkwest 1 & 2

- 1st Place: 5806 Willowbend—Lan & Phillip Conn
- 1st Place: 5703 Benning—Don and Debbie Beckman
- 2nd Place: 5806 Bankside—Peter & Jennifer Zografos
- 3rd Place: 5526 Hummingbird—Joseph & Melody Presswood
- 3rd Place: 5723 Portal—Richard Tapia

Parkwest 3

- 1st Place: 6019 Cerritos—Daniel & Sheryl Namee
- 3rd Place: 5906 Lattimer—David & Carri Peterson



Parkwest 3—1st Place



Westbury 2—2nd Place

PRESIDENT'S AWARD

11902 Chimney Rock—John Ohagan

BEST STREETS

Westbury 3—5700 Block Belrose

Westbury 4—W. Airport

Parkwest 1—Bankside

Parkwest 2—Benning



Westbury Civic Club, Inc.

ALL TYPES IRRIGATION, INC.

OVER 30 YEARS EXPERIENCE
Design • Drainage • Installation • Service
Commercial • Residential

Emil Becker
T.I.L. #4415
D.L. #126891

Office: (713) 726-1636
Fax: (713) 726-8322
Cell: (713) 819-2872





LEGACY
ROOFING & EXTERIORS
WIND & HAIL SPECIALIST
713-819-5537
YOUR LOCAL ROOFER SERVING WESTBURY SINCE 2006.

FREE ONE-HOUR INITIAL CONSULT INCLUDING REVIEW OF PRIOR YEAR TAX RETURN!!!!!!

Pam Schertz, CPA, LLC
Small Business Computerized Accounting Services & Training
Certified QuickBooks Pro Advisor
Individual & Small Business Tax Returns
Payroll processing and tax filing.
5322 W. Bellfort Ste. 211/212
Call for appointment today
281-974-2096




FARMERS
INSURANCE
Auto-Home-Life-Renters-Condo-Boat-Flood
Motorcycle-Business-Commercial Auto
Insuring Texans since 1999

Peter Zografos Agent
5322 W. Bellfort #206
(713)-877-8811
pzografos@farmersagent.com
www.farmersagent.com/pzografos



ASTRO PLUMBING

“YOUR PROFESSIONAL PLUMBER”
BEST PRICES • FREE ESTIMATES • SENIOR DISCOUNT

CALL JOHNNY
Cell: 713-256-0017

JOHN LEWIS M16312 ALL MAJOR CREDIT CARDS ACCEPTED



Legal Eagle CONTRACTORS REMODELING
Since 1974
www.legaleaglecontractors.com
Houston's Most Trusted Contractors



ACCREDITED BUSINESS
BBB Rating: A+



Dan Bawden, Master Builder
713-723-8850
Come see our Showroom at
5008 Locust Street
at South Rice, Bellaire
Design and Build
Kitchens ★ Baths ★ Additions
Westbury's favorite remodeler for over 25 years!




* 2017 * Happy New Year * 2017 * Happy New Year * 2017 * Happy New Year * 2017 * Happy New Year * 2017 * Happy New Year * 2017 *

COLDWELL BANKER

UNITED, REALTORS®

Buying, Selling
Or Leasing

Tony & CharlseY Porcarello

*** Westbury Specialist ***

Tony: 713-898-1546 tporcarello@yahoo.com
CharlseY: 713-898-1484 charlseY@swbell.net

We Know Westbury and Call it Home for 38 Years!





11010 Crestmore
\$575,000



5903 Belrose
\$393,000



6031 Cartagena
L@K We SOLD Another One!



5739 Warm Springs
Rental \$1,750

* 2017 * Happy New Year * 2017 * Happy New Year * 2017 * Happy New Year * 2017 * Happy New Year * 2017 * Happy New Year * 2017 *