



Westbury Crier

VOLUME 61, ISSUE 1

JANUARY 2016

Support the WCC: Pay Your 2016 Dues

Thank you for paying your dues. We need EVERYONE to pay their dues. We can't function without YOU! A safe, secure, nice place to live is what we all want. Your financial support and participation keeps the Westbury Civic Club up and running and is one of the reasons that Westbury has been listed as one of the top neighborhoods in Houston.

The Westbury Civic Club (WCC) advocates on behalf of our neighborhood, enforces deed restrictions, and beautifies public areas. The WCC is so important to Westbury's future. We need EVERYONE to pay their dues. This year we will be celebrating 60 years that the WCC has been leading the way to keep Westbury livable and desirable. Imagine what challenges our neighborhood would be facing today if the WCC did not exist.

Read all about our stellar accomplishments in 2015 on pages 10-11. Read about the services and benefits provided by the WCC on page 6. The Voluntary Dues form is on page 15.

The Westbury Area Patrol (WAP) puts certified police officers in our neighborhood and on our streets. Their visibility (even if you think you do not see them, the criminals know they are around) coupled with their quick response time makes them an invaluable component of neighborhood safety. Your **Westbury Civic Club dues** pay for office space, an office manager fielding a wide range of WCC tasks including assisting the board and support for residents, outreach projects and produces the Crier. The dues also beautify our esplanades and parks, plants and waters trees, removes litter from and mows common areas, and maintains our subdivision markers.

Please write a check today! We need EVERYONE to pay their dues. We believe that the dues of \$335 (just 92 cents per day) provide a worthwhile service that protects the value of your home and the safety of your family. Working together, we really can make a difference.



WCC Green—Butterfly Garden



WCC Advocacy: Mayoral Debate



WCC Outreach: National Night Out



WCC Outreach: Weekend after the Memorial Day flood



WCC Advocacy: Meeting with HCFC



WCC Recognition: Certificate from Governor of Texas presented by TX State Rep. Borris Miles

HEAVY TRASH SCHEDULE

Heavy Trash for **JANUARY** is **TREE WASTE ONLY**. Pick-up for ALL of Westbury is **Thursday, JANUARY 14**. **DO NOT PLACE TREE WASTE ON CURB UNTIL JANUARY 9**



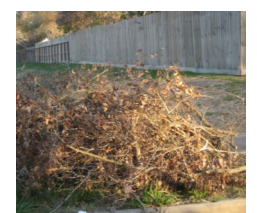
Westbury Celebrates
60 Wonderful Years
**PHOTOS OF WESTBURY
WANTED**

If you have any photos of Westbury from the past 60 years, especially of the 1950s-1970s, see page 7!

SPECIAL TRASH FEATURE ON PAGES 8 & 9

- ⇒ What is the difference between Junk Waste, Tree Waste, and Yard Waste?
- ⇒ What can I take to the city's different recycling centers?
- ⇒ When is heavy trash pick up for my house?

CHECK OUT PAGES 8 AND 9 FOR ALL THE ANSWERS AND MORE!



IMPORTANT CONTACTS

WCC OFFICE

5322 W. Bellfort #107, Houston, TX 77035

Jennifer Edmondson.....WCC Office Manager

NOTARY SERVICE IS AVAILABLE TO DUES PAYING

WESTBURY RESIDENTS during office hours or by appt.

OFFICE HOURS/CONTACT

Monday - Thursday.....9:30AM-1:30PM

Closed Friday, Saturday, Sunday, and holidays

Telephone.....713-723-5437

Email.....westburycc@sbcglobal.net

Deed Restrictions.....westburycc@sbcglobal.net

Visit our website at www.westburycrier.com

"Like" us on Facebook at Westbury Houston

SECURITY

Pct. 5 Constables (WAP).....281-463-6666

including suspicious activity, burglar alarms and vacation watch

Emergency.....911

Houston Police Dept. Non-Emergency..... 713-884-3131

Westbury HPD Storefront.....832-394-7520

CITY OF HOUSTON

District K Council Member, Larry Green.....832-393-3016

District C Council Member, Ellen Cohen.....832-393-3004

Deed Restriction Enforcement (City Legal).....832-393-6333

Platou Community Center.....713-726-7107

Meyer Library.....832-393-1840

Mayor's Citizen Assistance Office.....832-393-0955

Houston Help & Information.....311

For missed garbage pickup, water line breaks, potholes sewer repairs, dead animals, traffic signals, heavy trash violations, neighborhood nuisances, and other city services

CENTERPOINT ENERGY

Electric outage.....713-207-2222

Suspected natural gas leak.....713-659-2111

Street light repairs.....713-207-2222

Make sure to give pole number

OTHER IMPORTANT CONTACTS

County Commissioner El Franco Lee.....713-755-6111

Graffiti.....www.braysoaksmid.org

Shopping Cart Removal.....www.braysoaksmid.org

Brays Oaks Mgmt. District - Use "report a problem" link

Poison Control.....1-800-764-7661

Harris County Tax office.....713-368-2000

Harris County Appraisal District.....713-957-7800

2016 WCC BOARD OF DIRECTORS

If no contact information is provided, contact the WCC Office at westburycc@sbcglobal.net or 713-723-5437

EXECUTIVE BOARD

President.....Becky Edmondson

wccpresident@westburycrier.com or 713-443-3951

Vice President.....Leslee Cross

Secretary.....Dan Vega

Treasurer.....David Cummins

westburytreasurer@gmail.com

DIRECTORS AT LARGE

Communications.....Libby Mondello

Community Relations.....Cindy Chapman

wcccommunityrelations@westburycrier.com

Deed Restrictions.....Jennifer Edmondson

westburycc@sbcglobal.net

Flood Control & Infrastructure.....Jeff Benavides

Greenspace Beautification.....Marcia Hartman

Membership.....VACANT

Security.....Kevin O'Brien

Volunteer & Event Coordinator VACANT

SECTION DIRECTORS

Westbury 1.....VACANT

Westbury 2.....Rocio Lara

Westbury 3.....Robert Montgomery

rmontgomery002@comcast.net

Westbury 3.....VACANT

Westbury 4.....Amanda Bess

Westbury 4.....Eugene Sirls

Westbury 5.....Virginia Livingston

Westbury5E@westburycrier.com

Westbury 5.....VACANT

Westbury South.....VACANT

Parkwest 1.....William Grimsinger

Parkwest 2.....Jeffrey Weiss

jhweiss@yahoo.com

Parkwest 3.....Joe Niles

parkwest3@westburycrier.com

NEWSLETTER INFORMATION

Published by.....Westbury Civic Club, Inc.

Editor-In-Chief.....Jennifer Edmondson

Edited by.....WCC Publication Committee

Advertising..... 713-723-5437/ westburycc@sbcglobal.net

Ad Disclaimer: The WCC neither represents nor endorses an advertisement in the newsletter. Perform your own due diligence before contacting any advertiser.

President's Message

As we start to celebrate the 60th year of the Westbury Civic Club, it is a time to look forward to the future, but also a time to look back. We will be celebrating our 60th all year long. First, on January 23, we will plant 60 new trees in Westbury for Arbor Day and you can read about it on page 20. When I drive down Hillcroft and look at all the beautiful trees, I think of the past beautification directors back in the 1960s. Wouldn't they smile to see those beautiful oaks today? We will be planting for the future!

What is the difference in Westbury today as opposed to say 15 years ago? **We have become a young, vibrant community again.** Fifteen years ago, we were just a collection of homes; a residential subdivision. Not a bad thing; but now we are a part of a bigger whole. We have done this by becoming a recognized Super Neighborhood, being annexed into the Brays Oaks Management District, and becoming an active part of SW Houston 2000. All of these things have created a more complex web of groups coming together to really form a community. This was so clear to me as I sat at the SW Houston 2000 breakfast and watched all the different volunteers who were recognized for their efforts this past year. You can read about this on Page 19.



Fifteen years ago, we had no social spaces left. Westbury Square was a burned out decaying hulk with only memories of when it was the social hub of not only Westbury but SW Houston. Now we have the **Willow Waterhole Greenspace**. We have the **Westbury Community Garden**. We have improved parks spaces at both **Hager and Westbury Park**. The **Westbury Pool** has been upgraded and hosts popular summer classes. Soon, we will have **Levitt Pavilion, Houston**.

Neighborhood events and get-togethers are another important part of what sets Westbury apart! The Westbury Civic Club has held the White Elephant Sale for decades and has always supported block party National Night Out events. Nowadays, Westbury events are all over the neighborhood!

The Platou Community Center holds regular Family Fun day events once a month. The Willow Waterhole hosts music and movie events throughout the year. The WCC hosts Coffee with the Constables. The WCG hosts an annual Tomato Tasting event. The 16th annual Deck the Halls parade brought **over a thousand spectators** as did the Willow Waterhole Holiday Music in the Park complete with a Snow slide. (See photo below)



The Westbury Civic Club had many great accomplishments in 2015. You can read all about them on pages 10 and 11. Many of you have given your time, talent and treasure to make Westbury a great place to live. Thank you!

What is the LEGACY that we will leave for the future? How do we make the WCC and the Westbury neighborhood even better? What are your ideas, large or small? What can we do at the WCC for you? What can we advocate for you? Okay, I know everyone reading this is thinking "do something about Westbury Square". Check out page 6 for the latest update on that front!

I hope all of you will join us this year as the Westbury Civic Club celebrates 60 wonderful years of service to the community. Join me as we work together to make not only today a better day in Westbury, but to create a bright future for the next 60 years. Don't forget to pay your 2016 dues today!

Happy New Year and the best to all of you in 2016. May the New Year bring you happiness, peace, and prosperity.

Becky Edmondson



Westbury Civic Club Board Notes

- ◆ There was no meeting in December, so no new business to report.
- ◆ Available Positions on the WCC Board: Membership Director, Volunteer & Event Coordinator, Section Directors for Westbury 1, Westbury 3, Westbury 5, and Westbury South. If you are interested in serving on the WCC Board, contact the WCC President or WCC office. If you are undecided, come to a meeting and see exactly what we do.
- ◆ The next WCC Board meeting is Wed., January 20 at 7PM at Westbury Baptist Church.

It's time to pay your dues!

Please send in your support which:

1. Protects your investment in your home by keeping Westbury a strong and vibrant neighborhood
2. Protects your home and family with the Constable service
3. Improves the look of our greenspaces
4. Keeps the doors to your Civic Club office open

The dues form is on page 15.

NEXT WCC Board Meeting: Wed., January 20

Sixty Wonderful Years
Westbury Civic Club

Platou Community Center

11655 Chimney Rock
Hours: Mon-Thurs 12PM—8PM; Fri 11AM-7PM
Supervisor: Dan Reilly,
Daniel.reilly@houstontx.gov or 713-726-7107

Meyer Neighborhood Library

5005 W. Bellfort
Hours: See box below
Phone: 832-393-1840 /
www.houstonlibrary.org

January Family Fun Day

January 23, 10AM—2PM

Program topic: The Day Star, Our Sun.
Parents and kids come enjoy a presentation by the Houston Astronomical Society (HAS). They will present a program on the DAY STAR, our sun.



Learn about the day sky, compass points, and telling time using the sun. HAS will provide telescopes with filters so that you can safely observe earth's closest star. If the day is rainy or cloudy, the program will still go on with an indoor presentation. The program starts at 10:30AM.

STRETCHING EXERCISE CLASS Mon., Wed., Fri. from 9-9:45AM

Improve your flexibility by joining this non-strenuous exercise class. No registration required.

MsBEEHAVEN QUILTERS -Tues., 10AM - 2PM

GAMES—Wed., 10AM to 12PM

For more information, contact Wally at 713-729-9310

PORTABLE PROJECTS- Thurs., 9:30-11:30AM

For more information, contact Hazel at 713 -729-4568

LINE DANCING Mondays @ 12:30PM

For more information, contact Dan at 713-726-7107

Ping Pong Leagues—Wednesday & Friday

Open adult ping pong will be on Fridays from 11AM to 2PM. Open adult and teen play on Wed., from 6-8PM.



Like us on Facebook
"Platou Community Center"
TODAY!

TOPS: TAKE OFF POUNDS SENSIBLY

A Weight Loss Support Group Tuesdays 5:45-7PM

Drop in to preview or call Dorothy at 713-723-4441 or Naomi at 713-988-2233

January 2016 Events

Baby Playgroup

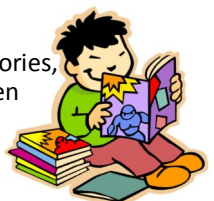
Tuesdays | 10–10:45 AM
Ages 0 – 18 Months. Playgroup includes music, singing and toys! Babies will learn socialization and motor skills as they play and have fun with each other.

Toddler Storytime

Wednesdays | 10- 10:45 AM
Ages 18 – 36 Months. Join us for stories, songs, crafts and playtime for toddlers.

Pre-K Storytime

Wednesdays | 11-11:45 AM
Ages 3-5 years. Join us for stories, songs and rhymes for children and their caregivers.

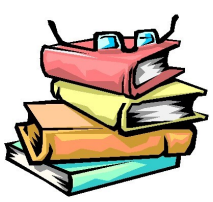


Arts & Crafts for Kids

Thursdays | 3:30-4:30 PM
Ages 4-10 years. Come by after school and enjoy an afternoon of arts and crafts.

Tween & Teen Zone

Thursdays | 4:30-5:30 PM
Ages 10-17. Come by after school and relax with your friends at the library. There will be craft projects, homework help, test prep and special workshops!



HOURS

Monday: Closed
Tuesday: 10AM-6PM
Wed.: 10AM-6PM
Thursday: 12PM-8PM
Friday: 1PM-5PM
Saturday: 10AM-5PM
Sunday: Closed

Plumbco
Plumbing
713-725-5025
MPL#17021
your neighborhood plumber

For all your
Plumbing
Installations
and Repairs
www.plumbcohouston.com

What's Happening in Westbury

Events & Meetings Calendar January 2016

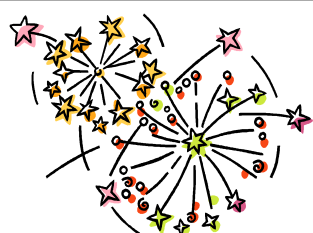
Fri. 1	Happy New Year WCC Office closed
Tues. 5	HISD Back in School from Winter Break
Tues. 12	SW Houston 2000 Bi-Monthly Breakfast 7:15AM HBU Morris Cultural Center Speaker— George Masi, CEO Harris Health System
Sat. 16	Audubon Society Bird Survey 8AM Meet at the Gathering Place parking lot—5310 S. Willow
Mon. 18	Federal Holiday WCC Office closed
Mon. 18	Brays Bayou Association Meeting 7:30PM The Gathering Place—5310 S. Willow Speaker TBA
Wed. 20	WAIC/Super Neighborhood #37 Meeting 8:30AM Salem Lutheran Church— 4930 W. Bellfort
Wed. 20	Westbury Civic Club Board Meeting 7PM Westbury Baptist Church—10425 Hillcroft
Sat. 23	Arbor Day Tree Planting 9AM Check social media for meeting place—Facebook and website, see page 20
Sat. 23	Family Fun Day @ Platou Center 10AM-2PM For information, see page 4 in yellow box
Tues. 26	SW PIP Meeting - Time and Location TBA
Feb. 1	Mandatory Assessments Due

PLANNING CALENDAR

*February 1— Assessments due for
Parkwest 1 and Parkwest 2

*February 26 —Rodeo Trail Riders at
Westbury Area Schools

*April 23-24 —Music Fest at
Willow Waterhole



Happy New Year
from the
Westbury Civic Club!

RECYCLING AND HEAVY TRASH CALENDAR



January 2016	
Thurs 7	Curbside Recycling All of Westbury
Thurs 14	Heavy Trash- TREE WASTE ONLY ALL OF WESTBURY
Thurs 21	Curbside Recycling All of Westbury

February 2016	
Thurs 4	Curbside Recycling All of Westbury
Thurs 11	Heavy Trash— JUNK WASTE ALL OF WESTBURY
Thurs 18	Curbside Recycling All of Westbury

Important Trash & Recycling Info

- ♻️ Regular trash pickup is every Thursday. Recycling is every other Thursday. Heavy Trash is once a month, 2nd Thursday.
- ♻️ Trash cans need to be on curb by 7AM each Thursday
- ♻️ Trash cans must be removed by 10PM each Thursday
- ♻️ Trash cans must be placed at least 3 feet apart
- ♻️ Trash cans must be stored out of sight.
- ♻️ Yard waste MUST be in correct biodegradable bags
- ♻️ Heavy trash can be placed starting at 6PM the Friday before pick-up
- ♻️ YARD WASTE is not considered tree waste. It is collected on regular Thursday trash day
- ♻️ Call 311 for all trash questions and complaints
- ♻️ Nearby Trash Depositories and Recycling Centers: **SW Trash Depository/Recycling Ctr** 10785 SW Frwy / Hours: Wed.—Sun. 9AM to 6PM; Accepts Junk Waste, Tree Waste & Recyclables.
- ♻️ **Environmental Service Center** - 11500 S. Post Oak Hours: Tues/Wed 9AM-3PM; 2nd Sat 9AM-1PM. Accepts Hazardous Household & Electronic Waste.
- ♻️ Refer to www.westburycrier.com or www.houstontx.gov for more trash and recycling information

City of Houston Heavy Trash Schedule

January	Tree Waste	March	Tree Waste
February	Junk Waste	April	Junk Waste

Why Should You Pay Your Dues?

What Does \$28 a Month Accomplish?

The Westbury Voluntary dues are \$335 a year or just \$28 a month. We need EVERYONE to participate.

- ❖ **Protects your investment in your home by keeping Westbury a strong and vibrant neighborhood.**
- ❖ **Keeps the doors to your Civic Club office open and staffed.** The WCC has an office with records and historical data dating back to 1956. The Westbury Crier has been bringing news that affects our neighborhood to your doorstep EVERY month since 1956. Right now the WCC has one employee. As an example, Meyerland, with half the homes, has 3 employees and they outsource their publication. We would love to see enough participation to hire another employee. The office provides free notary service to members and works as a liaison for residents on issues with the city.
- ❖ **Enforces deed restrictions.**
- ❖ **Protects your home and family with the Westbury Area Patrol through Constable Pct 5.** We currently have 4 deputies. We need YOUR participation to be able to fund this 4th deputy. The past two years we have not raised sufficient funds to pay for the security patrol and have had to dip into reserves.
- ❖ **Improves the looks of our esplanades, parks, and green spaces.** The WCC has planted hundreds of trees and given away thousands more. We have a contract with a landscape service that mows the areas that the City or TxDot or others do not mow in public right of ways.
- ❖ **Advocates for City services & infrastructure improvements.**
- ❖ **Hosts two White Elephant Community Garage Sale events each year!**

For \$28 a month, this membership is a bargain and a great way for you to invest in the neighborhood. Won't you join us in making Westbury the very best neighborhood that it can be?

Westbury Square Update

What a way to kick off our 60th anniversary year! Becky Edmondson spoke to owner Al Antonini in mid-December and was told that more demolition will be coming to the Westbury Square property the first week of January 2016. The building that fronts West Belfort, which burned in June of 2010, will finally be demolished.



This is good news. In the January 2014 issue of the Crier we reported that the City had entered into an agreement with the property owner to demolish two of the buildings that had condemnation orders on them in 2014; that demolition did take place. The rest of the demolition stalled as Mr. Antonini worked with several interested buyers. We have hated seeing, what was once the heart of Westbury, fall into disrepair and ruin. Ira Berne, the developer of the Westbury subdivision and Westbury Square, had such a unique idea for the time when he set aside this interior portion of the subdivision to create a European square shopping center.

Twas the Night of Memorial Day

Written by Linda Bolet, Westbury resident

*Twas the night of Memorial Day,
when all through the house
The water kept flowing,
with little respite.*

*Then Halloween came,
and with nary a care,
The flooding continued
from here until there.*

*Twice, I was nestled
all snug in my bed,
While visions of 'Not again!'
danced in my head;*

*And my neighbor in waders,
and I in my boots,
Cleaned out the sludge
that settled and sluiced*

*When, next day, to my surprise,
out on my lawn,
Came a clatter of children,*

*with wagons galore,
Bearing water and chips,
moms all in tow.*

*Next civic club members arrived
at my door:
"Need some chocolate?
A crowbar? A lift to the store?"*

*So onwards and upwards,
though feeling so sad,
I knew I had blessings galore
in this land.*

*For all those who have flooded,
and all who have not,
Be glad of good neighbors and
all their good thoughts.*

*So in the spirit of love, Merry
Christmas to all, and to all, only
good nights!*

PRO

713-552-1603

Foundation Repair Services

Protecting your home with our lifetime guarantee

Licensed, Bonded, Insured
Lifetime Warranty
Free Estimates



Westbury Resident For 25 Years

Jim@ProFoundationRepair.com

Dick n' Sons
Floor Covering Center

6240 Bissonnet, Houston, Texas 77081

713.981.1900
www.dicknsons.com

Serving Westbury over 40 Years!



Fine Floor Coverings
for Every Budget

**Carpet, Cork, Laminate, Vinyl, Hardwood,
Ceramic Tile & Countertops!**

M-F 8-5 Thurs. 8-7 Sat. 10-4
6 Months No Interest Financing

60th Anniversary of the WCC

This coming year marks an exciting time in Westbury's history, as it is the 60th anniversary of the Westbury Civic Club!

Interested in how you can participate in the festivities? We are busy setting up committees for our celebration as well as other events and will be asking for volunteers soon. Look for updates in the *Crier* and on social media.

We want your Westbury photos!

We are looking for photos from the 1950's-2000s depicting life in Westbury. Think neighborhood get-togethers, holiday gatherings with the neighbors, neighborhood kids playing at the park or anything that shows life in our great neighborhood throughout the years. We would especially love to find some old photos of the streets and outside of homes from throughout the decades!

How can I submit my photos? You can drop them off in an envelope with your name, phone number, and address to the Civic Club Office or you can scan them and email them to Jennifer at westburycc@sbcglobal.net. We will be very careful with your photos.

Do I get my photos back? Yes! Once we have scanned your photos, we will hand deliver them back to your home!

Where will these photos be seen? The photos will be on display at our celebration party as well as in the *Crier* throughout this anniversary year. You can choose to have your name associated with them or not.

If you have any questions, call Jennifer at 713-723-5437. We look forward to seeing your photos!

Sixty Wonderful Years Westbury Civic Club

Photo to the right:
Submitted by Mrs. Harvey Lee Jr., a resident of Westbury since the 1950s. Picture was taken at Westbury Square on Aug. 15, 1963

Photo Below:
Copy of photo hanging in WCC Office, age unknown, approximately between 1960 and 1968.



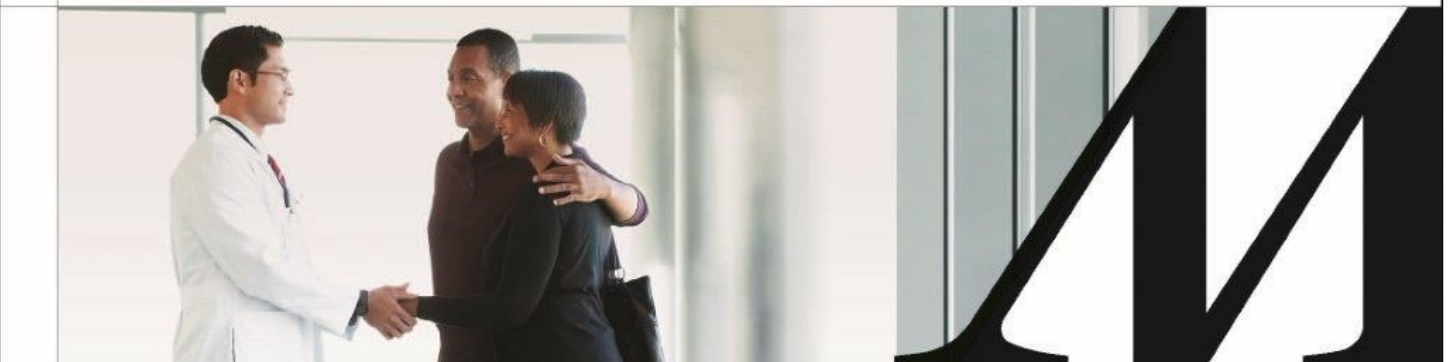
LEADING MEDICINE STARTS WITH HOUSTON METHODIST PRIMARY CARE.

At Houston Methodist, your family's well-being is at the center of all we do. From simple checkups to more complex concerns, our board-certified physicians provide the compassionate care you need, as well as access to our leading network of world-class specialists.

For an appointment, schedule online at houstonmethodist.org/pcg or call **713.394.6638**.

Many practices offer:

- Online scheduling
- Convenient locations
- Same-day access
- After-hours access



Special Trash Feature

2016 Monthly "Junk Waste" or "Tree Waste"

Unlike many cities, the City of Houston provides residents with FREE curbside monthly heavy trash collection, alternating "TREE WASTE" collection months with "JUNK WASTE" collection months. The collection cycle is the same every year, as shown below. **ALL of Westbury is picked up on the 2nd Thursday of each month.**

TREE WASTE MONTHS	JUNK WASTE MONTHS
January	February
March	April
May	June
July	August
September	October
November	December

What is "Junk Waste"?

"Junk Waste" includes furniture, appliances, lumber, fencing, and other bulky items (including tree waste, but the tree waste would then be sent to landfill rather than mulched). **The city will NOT collect bagged yard waste placed in improper bags during a Junk Waste month.**



What is "Tree Waste"?

"Tree Waste" consists of tree limbs, shrubby limbs, or branches of trees and shrubs. If the Tree Waste has other types of materials mixed in with it, then it is no longer Tree Waste. Lumber, fencing and similar materials are NOT considered Tree Waste. During a Tree Waste month, only Tree Waste materials will be collected.



What is "Yard Waste"?

"Yard Waste" consists of leaves, grass clippings, small yard trimmings or branches. Yard Waste must be in a city-approved bag, or small branches bundled (tied) into a pile less than 4 feet long, less than 18 inches in diameter, and less than 50 pounds in weight. "Yard Waste" is picked up every Thursday.



Trash Can Placement

Household garbage must be put inside the city-provided container which should be placed at the curb between 6PM Wednesday evening and 7AM Thursday morning. The container must be accessible to the automated collection truck and not blocked by obstacles, including parked cars. Homeowners with multiple trashcans MUST place trashcans three (3) feet apart. Do not place cans next to light poles or trees. The city has started tagging cans that are placed incorrectly. Homes on corners must place their trash cans on the front street (not side). Trash cans must be removed from the curb by 10PM Thursday.

TRASH CAN PLACEMENT EXAMPLES



Too much trash this week? Buy "tags for bags" from Fiesta, HEB and participating Kroger stores so city will pick up your extra bags of trash. Cost is \$ 2 per tag, plus tax.

What goes in the large green bin? Recyclables such as steel or aluminum cans. Paper. Certain plastics, not # 6. Glass IS allowed in the large recyclable bins. Recycling is picked up every other Thursday.

What goes in the large black trash bins?

Household garbage such as personal trash and food waste are to be placed in the large black trash bins. Household garbage day is Thursday. No yard waste, dead animals, household hazardous waste, or electronics are allowed.

Trash Reminder App

The City of Houston Solid Waste Department has a new free app for smartphone users, Rollout! It is available for Androids and iPhones. Insert your address, set reminders and never forget when trash day is! The app will send notifications to your phone remind you when it is recycling trash, regular trash and even heavy trash.



Commercial ♦ Residential ♦ Auto Glass

DISTINCTIVE GLASS

Phone: (713)981-0200

Fax: (713)981-4193

Email: dist@clear.net

9541 Town Park Dr.

Houston, TX 77036

www.distinctiveglassonline.com

Maxx Gonzalez

El Arte D'Pintar

Expert Int./Ext. Paint

832-212-0739

maxx@maxxgonzalez.net

www.maxxgonzalez.net



♦ Sheetrock Repair ♦ Stain

♦ Fancy Texture ♦ Walls ♦ Faux Finishing

Special Trash Feature

Environmental Service Center – South 11500 South Post Oak - between Gasmer and South Main Recycle and Household Hazardous Waste

Various household hazardous waste is accepted such as anti-freeze, fuel, oil, paint, paint thinner, pesticides, herbicides and household cleaners. Residential electronic scrap items will also be accepted (monitors, televisions, printers, keyboards, mice, scanners, fax machines, telephone handsets, VCRs, CPUs, cellular phones and other small consumer electronics). These items should not be placed on the curb with or in your container for collection with garbage or heavy trash pick-up. **The center is open every Tues. and Wed. from 9AM to 3PM and the 2nd Saturday of the month from 9 AM- 1 PM.**



Items that can be taken to the Environmental Service Center

Reuse Chemical Take Away (FREE)

The City of Houston's Environmental Service Center South offers free paint and household chemicals. Located at **11500 South Post Oak Road**, the Center is open for reuse chemical distribution on **Fridays from 9AM to Noon**. First come, first served.

ReStore (Craft Items, Books, Post Consumer & Industrial Scrap - FREE)

The ReStore, which acts as a book swap, recycling info library, as well as a repository for craft items and post consumer and post industrial scrap (useful for art projects). Located at **11500 South Post Oak**, items can be taken away from **9AM - Noon every Friday** during the Reuse Chemical Take-Away.



SOUND FITNESS

REAL PEOPLE REAL RESULTS

Locally Owned & Operated Since 2006!

5645 Beechnut St.

On the corner of Beechnut & Hillcroft in the Maplewood Mall Shopping Center

713-981-9191

Your Neighborhood Fitness Center offers:

- Month to Month Memberships
- 2 Free Workouts to get you started
- Free Monthly Workouts to keep you going
- Locker rooms with Lockers & Showers
- *Kids Club & Independent Personal Trainers Available
- **SENIOR PROGRAM AVAILABLE!!!**

Check us out: Soundfitnesshou.com

Free One Week Guest Pass

Guest passes for 1st time visitors. Must be 18 years or older & have local ID.
*additional fees apply. See club for details. State ID #20060111

Southwest Neighborhood Depository & Recycling Center (for Heavy Trash Drop-off)

10785 Southwest Freeway Houston, TX 77074
Phone: 713.541.1953

This facility accepts Junk Waste, Tree Waste and Recyclables at no additional charge to City of Houston residents. Citizens may use the depositories four times per month. You must provide a Texas Driver's License or ID and a current utility bill or city property tax receipt. **The depositories will also accept the following items:** Furniture, Tree limbs, Stoves, Refrigerators, etc., 10 auto tires (Rims Not Accepted)

Open Wednesday - Sunday, 9AM to 6PM.

Westpark Recycling Center

5900 Westpark

This facility is a drive through operation so you do not have to unload your vehicle.

The center accepts: aluminum and tin cans, oil filters, used tires, computers, #1-7 plastic containers, GLASS bottles and jars, telephone books, office paper, cardboard, magazines, and used motor oil. Newspapers placed in a brown bag will also be accepted.

Open Monday– Saturday from 8AM to 5PM.

Reuse Warehouse

9003 N. Main St.

The facility accepts material from individuals, supply companies, and builders, and makes it freely available for reuse by any non-profit organization.

Open Tuesday thru Friday from 8:30AM to 4:30PM and every 2nd and 4th Saturday of the month from 8:30AM to 4:30PM

Trash Violations

Violation of any provision of the solid waste ordinance is punishable upon first conviction by a fine of no less than \$50 nor more than \$2,000. Each subsequent conviction is punishable by a fine of no less than \$250 nor more than \$2,000. Each day that any violation continues may be punishable as a separate offense. **To report a violation or to file a complaint, call 311.** Solid Waste Management Department Supervisors can write citations.

Christmas Tree Recycling

The City of Houston encourages residents to recycle Christmas trees. The recycled trees will be converted into mulch, which will help save landfill space and help preserve the environment.

Trees WITHOUT artificial snow, tinsel, or stands: In Westbury, these trees will be collected for recycling by the city during the January "Tree Waste Heavy Trash" pickup. They may be placed at the curb starting Saturday, January 9, for collection on **January 14** for ALL of Westbury. Trees for recycling may be taken to the Southwest Neighborhood Depository at 10785 Southwest Freeway.

2015 Accomplishments

Our purpose, as set out by the WCC bylaws is: "to improve the appearance of the Westbury area and promote the civic, cultural, educational, health, and general welfare of the residents of the Westbury and Parkwest subdivisions." The Westbury Civic Club is a volunteer organization made up of Westbury residents who give their time and energy to make Westbury a great place to live. We thank our office manager (the only paid position), Jennifer Edmondson, for all her support of the board and the residents of Westbury. It's not the easiest job being at the beck and call for 5,000 homes and a board of 24!

HIGHLIGHTS

Parks and Esplanades

Westbury Community Garden:

Volunteers from across Houston participated at multiple garden workday events. During 2015, the city built a new sidewalk to connect to a Metro bus stop at the garden. The Brays Oaks Management District provided money to install a crushed concrete driveway. The garden successfully applied for a city Natural Area Permit for the site. The garden continues to seek grants to fund a Master Plan.

Platou Center: The Friends of Chimney Rock Park group continued their award winning summer science program at the Community Center. Family Fun days were hosted on the 4th Saturday and enjoyed by many.

Hager Park: Trees were planted and mulched during Keep Westbury Parks Beautiful Day in April. We advocated for improvements at Hager and the jogging trail received a much needed asphalt overlay. The areas under the play equipment received new mulch.

Westbury Park: After years of advocating for a fence along Stillbrooke, the City of installed one in October. We thank CM Larry Green for getting this fence done! A plaque thanking the donors who contributed to the playground shade sail was installed. A new tennis backboard was installed. A butterfly garden was created during the Keep Houston Beautiful event in April, and monarch butterflies and caterpillars were in residence by November! **Willow Waterhole:** The WCC continues to support activities at the Willow Waterhole. Regular workdays were held throughout the year. The "Bud Light Gives Back to Houston" workday brought much needed improvements to the Dryad entrance. **Esplanades:** The

Westbury Civic Club received a Neighborhood Matching Grant from the City to install esplanade irrigation on Hillcroft near Willowbend. New trees were planted and mulched on W. Bellfort. During the summer dry spells, landscape beds and young trees were regularly watered. Our landscaping contractor fertilized, mulched, and de-littered the esplanade beds on a regular basis, and also mowed and maintained the major intersection of W. Bellfort and Chimney Rock. The contractor also mowed areas which do not get frequently mowed.

Security

Our WAP sergeant coordinates with the WCC Security Director to oversee the Westbury patrol program, plus do patrols. **Security Outreach:** We held "Coffee with the Constable" and similar events to allow residents to meet our patrol deputies.

Communications

The Westbury Crier: Since July of 1956 the WCC has produced our monthly newsletter, *The Westbury Crier*. The Westbury High School Baseball Booster Club continues to do an awesome job with delivery. **Social media:** We gained over 300 additional fans on Facebook and now have over 1500 fans. We kept our residents aware of issues relevant to Westbury through our website, Facebook, and monthly newsletter.

Support for our Residents

We get calls and emails: The WCC office handled thousands of calls and emails from residents and many problems were resolved. **We are liaisons with the City for residents.** We worked closely with the Department of Neighborhood (DON) and the District K office when issues were not resolved through 311. We participated in a monthly ride-along with DON to identify and correct city ordinance violations.

White Elephant sale: We held two successful sales.

WCC Awards

Neighborhood USA: Westbury won a **FIRST place award** at the 2015 Neighborhood USA conference! The award was in recognition of community efforts to save the Westbury Community Garden from being paved over for an apartment complex. The WCC also won a **SECOND place award** at the conference for this newsletter, *Westbury Crier*. **Keep Houston Beautiful Proud Partner Awards:** The Westbury Civic Club, WAIC and the

Super Neighborhood received a certificate of recognition from Keep Houston Beautiful for our "Keep Westbury Parks Beautiful" workday. Bill Burhans was recognized for his work planting the palms at Meyer Library. Council Member Larry Green won a Distinguished Service Award for his efforts to beautify District K with painted murals on traffic control boxes. **Southwest Houston 2000 / Brays Oaks Management District Awards:** Virginia Livingston accepted an award on behalf of the Westbury Community Garden. Cindy Chapman received two awards for her volunteer work with both organizations. Bill Burhans was one of the volunteers recognized for Willow Waterhole. Eugene Siris was one of the volunteers recognized for efforts to create Neighborhood Trails.

Solid Waste

After the flooding in May and October, we worked closely with Solid Waste to get heavy trash picked up. We continue to work with this department when trash pickup is missed.

Advocacy

We strongly advocate on behalf of all of Westbury and have directors who serve on important boards such as the Westbury SuperNeighborhood, the WAIC, the Westbury Community Garden, the Friends of Westbury High School Foundation, the Willow Waterhole Greenspace Conservancy, SWHouston 2000, the Brays Oaks Management District, the Brays Bayou Association, the Houston Clean City Commission, and the Super Neighborhood Alliance. We meet with city, county, state, and federal officials. We are working closely with HISD and our District IX trustee, Wanda Adams, on the 2012 bond projects for Parker and WHS.

Administrative & Training

Several directors attended "Neighborhood 101" training workshops sponsored by District K. Several others attended the Power Tools for Non Profits.

Neighborhood Protection

We met monthly with the city's Department of Neighborhoods to review outstanding 311 items and to track their progress. We participate in driving tours in Westbury with the Department of Neighborhoods. We worked with City Legal on cases where deed restrictions were being violated.

2015 Accomplishments

Commercial Properties

The WCC monitors the adjacent commercial properties and either works directly with the owners or through the city. Portions of Westbury Square are set to be demolished in 2016 and we continue to work with the City and the owner. We worked closely with Neighborhood Protection to get the owner of the vacant property on the north side of West Belfort de-littered and mowed. We worked with the new owners of the Westbury Centerette property to have it demolished.



Infrastructure

Flooding: In January of 2015, Harris County Commissioners' Court approved a contract to desilt the Harris County Flood Control district channels that run through Westbury. Work to improve the flow on ALL the channels in Westbury was completed, but not before Memorial Day flooding. At the 2015 CIP meeting, the City reported that the majority of Westbury had been through the pre-engineering process for storm water drainage and that a 100 million dollar storm water project is slated to be done in 2021. We will continue to advocate with both the city and county to alleviate structural flooding in Westbury.

Sanitary Sewers: We reported sewer issues at the CIP meeting in 2014. ALL of the sewers in Westbury are being scoped and evaluated and sewer lines were replaced in some parts of Westbury (Westbury 5 and Parkwest 3) and this work is still ongoing. The Willowbend overlay project began in November. Chimney Rock at near South Main was repaired. Several concrete panels were replaced on Hillcroft. **Water line replacement:** Water lines are being replaced in parts of Westbury 3 and Westbury South. **Streets/Roadwork:** We continue to advocate for street repairs and replacement. After years of requesting that Willowbend be fixed, the City has started the project to re-asphalt

the street. The asphalt overlay project starts at Willowbend @ Albury (far West side of Westbury) and will go to Willowbend @ Cedarhurst (street right before W. Belfort). Construction began in December 2015 and will continue til March 2016. We requested many concrete panel replacements along Hillcroft at the March CIP Meeting and the City has completed the list. The north bound lanes of Chimney Rock at Main have been newly asphalted and are much better to drive down.

Sixty Wonderful Years
Westbury Civic Club

real estate market data FREE & CUSTOMIZED FOR YOU

Your Market 2012 at 1:37 PM.

Average Days on Market 78	Selling vs Asking Price -5%	Asking and Sold Prices \$189,500	Number of Homes for Sale -17%
------------------------------	--------------------------------	-------------------------------------	----------------------------------

Have a Question? Get in touch, I'm happy to help. Contact me or call 713-272-2000

Address	Price	Days on Market
3714 Covatta Dr 2 Beds, 2 Baths, 2012 sq. ft.	\$217,000 \$177,500	88 days
3718 Covatta Dr 4 Beds, 2 Baths, 2600 sq. ft.	\$246,000 \$124,500	31 days
3847 Covatta Dr 3 Beds, 2 Baths, 2000 sq. ft.	\$192,000 \$94,750	219 days
3905 Covatta Dr 3 Beds, 2 Baths, 2000 sq. ft.	\$190,000 \$47,750	63 days
3905 Covatta Dr 3 Beds, 2 Baths, 2000 sq. ft.	\$190,000 \$102,750	71 days
3917 Covatta Dr 3 Beds, 2 Baths, 2000 sq. ft.	\$177,000 \$94,750	82 days

FREE MARKET SNAPSHOT www.brockandfoster.com

Find out what your home is worth, see what the house down the street just sold for and learn about neighborhood real estate trends. Visit www.brockandfoster.com to access your FREE customized real estate data report.

Market Snapshot is brought to you by Brock & Foster. Susan Brock is a specialist in Westbury and the surrounding areas. With more than 12 years experience she offers an individualized experience that has earned her a five-star client experience rating. Susan is a licensed broker and REALTOR.®

BROCK and FOSTER
Real Estate
Greater Knowledge. Greater Results.



susan@brockandfoster.com office: 713-272-2000 cell/text: 713-922-0877

City Services

New Southwest HPD Station To Be Built Near Westbury

The HPD Southwest Substation serving Westbury and the near southwest area of Houston is currently located on Beechnut, inside Loop 610, at the very northern edge of the southwest area it serves. The 50-year-old police building no longer meets the needs of the police department, due to its size and condition. Another problem is that the building is not centrally located in the patrol area it serves.

The groundbreaking for a NEW HPD substation building took place on December 17. The new 50,000 square foot police building will be centrally located in the beat area and will be constructed in a Houston park called Cambridge Village Park (south of US90A near S. Post Oak). The new building will have a large 112-seat public meeting room that can be used for community meetings or officer training. The construction project will also add new parking for the park and add new playground equipment. It is estimated that the new police station will be open by the end of 2016.



Ground-Breaking Ceremony Photo Dec. 17, 2015

City of Houston Public Works Projects Willowbend Asphalt Overlay

Willowbend Blvd. from Albury to Cedarhurst is in the midst of an asphalt overlay. This is a continuation of the overlay done on Willowbend several years ago that ended at West Bellfort.

We had hoped to have the street reconstructed, but the asphalt overlay will be a big improvement. Conditions on Willowbend have seriously deteriorated and drivers often drive in the wrong lane to avoid the potholes. Work has begun and will be completed by March 2016. Please make note of this construction and adjust your routes accordingly. We expect delays around the area due to the construction and the number of schools located off Willowbend.

Water Main Line Replacements

Have you noticed strange markings on the sidewalks and streets? These are signs of upcoming improvement projects in our area. Alert residents notified the Civic Club of workers along Fontenelle. After some research and help from our City Council office, we were able to determine that portions of Westbury South and Westbury 3 will be having their water lines replaced. This is NOT storm drains. These are the water mains that break in the summer! This project is still in planning and design phases. Construction is not going to start until at least 2019.

Sanitary Sewer Line Replacement

Most of Westbury 5 West of Hillcroft and Parkwest 3 are getting their Sanitary Sewer lines replaced. See photos below. All homes affected will receive a notice from the contractor. Almost all the sanitary sewer lines are located in our backyards. They are in the 5 foot utility easement at the rear of most properties. The contractor will need access to your backyard when they are working in your area. Watch for notices if you live in the below areas. For more questions or issues, contact Portland Utilities General Manager, Steven Ham, at (713) 434-1924.

TAKE THE FIRST STEP
IN ELIMINATING
**JOINT
PAIN**



Contact a Memorial Hermann Joint Center. And start living pain free.

Staying active is key to staying healthy. That's why Joint Center specialists use the most advanced treatments to get you moving again. From new prescription options, to minimally invasive surgical interventions, our affiliated body of experts is ready to help you find the best path to the life you want to live.

Call 713.272.1888 or visit jointpain.memorialhermann.org for more information or to make an appointment.

**MEMORIAL
HERMANN**
Joint Center

ADVANCING HEALTH

Infrastructure & Flooding

Willowbend Flooding

For several years, street flooding at Willowbend and Rampart has gotten worse. A homeowner on Willowbend has had the sad experience of having water enter his home multiple times this year.

Jennifer Edmondson, the WCC office manager, began seriously advocating for a solution to this problem. Studying the city stormwater drainage maps, she discovered that the city maps did not reflect what was actually installed, and that stormwater piping existed instead of an open ditch near Westbury Baptist Church. After she pushed the city to investigate the situation, the city agreed that a new manway was needed to be able to clear the piping at that location. The city also raised a manway for better access for cleaning. Both the north-south (along Rampart) and the east-west lines (along Willowbend and along the drainage easement near Westbury Baptist)



have now been cleared several times and should now function more efficiently.

On December 15th, the City's Assistant Director of Public Works along with a piping camera crew and several area supervisors met neighborhood representatives on site to view together the stormwater drainage lines at several points. Neighborhood representatives were: Jennifer Edmondson (WCC Office Manager), Cindy Chapman (Co-President, Westbury Super Neighborhood), Becky Edmondson (Co-President, Westbury Super Neighborhood), and Virgil Fisher (President, Maplewood North/South). Also attending was Barbara Hite from District K.

During the meeting, sections of the drainage lines were observed to be clear; however standing water was observed closer to Hillcroft. This indicates that the piping is not able to drain completely the way it is intended to do (southward along Hillcroft and then into the county ditch that parallels Hummingbird). The city has submitted a request asking the county to desilt the area where the Hummingbird ditch crosses under Hillcroft. That will somewhat improve drainage.

Unfortunately, a longer-term solution requires that the drainage be MODIFIED. This means that the city should do a Pre-Engineering evaluation

so that capital funds can be requested and then allocated to improve the entire area drainage system.

We appreciate all the help and time that Public Works gave us along with our District K office as we continue to advocate to find a solution for this flooding problem. A big thank you is extended to both Jennifer Edmondson, for her dedication, and to the City of Houston, for its responsiveness.



From left: Barbara Hite, Jennifer Edmondson, Virgil Fisher, PWE employee, Becky Edmondson, Cindy Chapman, PWE employee

 MAPLEWOOD SOUTH - \$490s 9411 Bob White 5/3.5/2 +Renovated+Study	 MAPLEWOOD SOUTH - \$475k 5718 Braesheather 4/2.5/2 +2,700SqFt+Cul-De-Sac	 MAPLEWOOD SOUTH - \$450s 5910 Dumfries 4/2/2 +Renovated+Study	 MAPLEWOOD SOUTH - \$440s 6111 Braesheather 4/2/2 +Renovated+Hardwoods	 Sold 5742 CLARIDGE 8307 ASHCROFT 4617 TONAWANDA 5322 STILLBROOKE 5639 BENNING
 BARKLEY SQUARE - \$390s 5626 Lymbar 4/2/2 +Updated+GameRm+Pool	 WESTBURY - \$330s 5727 Warm Springs 3/2/2 +GameRm	 BRAEBURN TERRACE - \$230s 5902 Ariel 3/2/2 +Updated+Herod Elementary	 WESTBURY - \$330s 5731 Benning 3/2/2 COMING SOON	

EXPERIENCE IS THE DIFFERENCE



JACKIE ZEHL & TERESA LEWIS
PREMIERE PROPERTIES

713.349.7221 | JACKIE@ZEHLEWIS.COM | 713.349.7227 | TERESA@ZEHLEWIS.COM



COLDWELL BANKER UNITED, REALTORS | 5111 BELLAIRE BLVD. BELLAIRE, TEXAS 77401
 A subsidiary of NRT, LLC. Coldwell Banker United fully supports the Fair Housing Act and Equal Opportunity Act.

Crime/Security

Crime Statistics for Westbury Super Neighborhood 37* 30 days November 21, 2015

	Single-Family Home	Apt/Condo	Commercial Property	Public Areas	Totals
Burglary	5	1	3	0	9
Theft	26	5	5	4	40
Auto Theft	3	0	1	1	5
Robbery	1	3	2	0	6
Assault	1	2	1	0	4
Rape	0	1	0	0	1
Murder	0	0	0	0	0
TOTAL	36	12	12	5	65

*Area bounded by: S. Post Oak, US 90/S. Main, utility easement north of Willowbend and drainage bayou, west of Braewick









Single Family Residential Crime

Locations by block number, not exact address. Stats for 30 days preceding November 22, 2015

Block #	Street	Crime
5700	Alvarado	Assault
10900	Ashcroft	Auto Theft
11600	Ashcroft	Theft
10800	Atwell	Theft
11100	Atwell	Theft
12300	Atwell	Theft
5600	Belrose	Theft
5800	Belrose	Theft
5900	Belrose	Theft
11400	Braewick	Auto Theft
10900	Burdine	Theft
5500	Burlinghall	Theft
6000	Densmore	Theft
10800	Doud	Burglary
5900	Dryad	Burglary
6000	Effingham	Theft
5800	Farwell	Burglary
5600	Fontenelle	Theft
5700	Fontenelle	Theft
6000	Fontenelle	Burglary
5900	Greencraig	Auto Theft
5000	Hazelton	Theft
5400	Kinglet	Theft
6000	Ludington x2	Theft
10800	McClearn	Theft
5500	McKnight x2	Theft
10600	Moonlight	Robbery
5000	Redstart	Theft
12300	Renwick	Theft
12400	Renwick	Theft
5500	Spellman	Burglary
5700	Warm Springs x3	Theft

Public Safety in Westbury

There is often an uptick in property crime around the holidays and this past December in Westbury was no exception. The past 30 days have seen an increase in property thefts. The November *Crier* crime stats showed five thefts at residences, however, in the past 30 days there have been 26 thefts. At least 15 of these 26 thefts occurred in driveways. These are crimes of opportunity. These driveway thefts have a high concentration in Westbury 3, in the 5500-5700 blocks. But it is happening in all sections, so be aware of your surroundings. Below listed are several things that you can do to help out.

-  Know the number for the Constables, 281-463-6666
-  Know your neighbors and who belongs on your street.
-  Call in suspicious person (s) to the Constables
-  Always lock your vehicle.
-  Park in your garage, if you can.
-  Do not keep anything of importance or valuable in your vehicle.
-  Report all break-ins to the Constables, even if nothing is taken. This will be helpful in establishing patterns and getting extra patrols if they are needed.
-  Pay your 2016 Dues! We need everyone's support. The more people that pay, the more constables we can have.

Since 1980, Westbury has contracted with Harris County Precinct 5 to provide deputies to patrol our neighborhood. We refer to this as the **Westbury Area Patrol (WAP)**. The WAP provides 3 deputies and one sergeant, which give us a more visible police presence as well as timely response to calls for service. The WAP program is the one of the most important programs of the WCC. The WCC pays over \$300,000 a year for the Constables and we need your support. Please pay your 2016 dues today! The form is on the next page.

IMPORTANT NUMBERS & CONTACTS

Westbury Area Patrol / Constables

281-463-6666

Westbury HPD Storefront

832.394.7520*

**new number*

HPD Non-Emergency

713-884-3131

Brays Oak Management District (BOMD)

www.braysoakmd.org

(report graffiti)

Thank you to everyone that contributed to the Westbury Area Patrol this year. We need everyone to support this great program. The 2016 dues form is located on the next page. Send in your dues today. Thank you!



2016 Dues/Assessments

ATTENTION: PARKWEST 1&2

Homes purchased in Parkwest 1 after Jan. 1, 1993 and Parkwest 2 after Jan 1, 1994 have mandatory assessments.

The amount of the 2016 Mandatory Assessments is \$233.50. The 2016 Assessments are due by February 1.

If you have any questions or did not get your invoice, please contact the WCC office at 713-723-5437 or email westburycc@sbcglobal.net.

Mission of the WCC

The purposes of the Westbury Civic Club, Inc. (the "Club") are to improve the appearance of the Westbury area and promote the civic, cultural educational, health, and general welfare of the residents of the Westbury and Parkwest subdivisions in Harris County, Texas (collectively, the "Community").

Why Should I Pay My Dues? What are the Benefits?

- Protects your investment in your home by keeping Westbury a strong and vibrant neighborhood.
- Keeps the doors of the Civic Club office open and staffed.
- Protects your home and family with the Westbury Area Patrol through Constable Precinct 5.
- Improves the looks of our esplanades, parks, and green spaces.
- Advocates for City services and infrastructure improvements
- Hosts two White Elephant Community Garage Sale events each year
- Organizes community get togethers such as Coffee with Constables and National Night Out

Why do my dues go to Dallas? Is this correct?

Yes, this is correct! We have you mail your payments directly to our bank's processing center. This allows your payments to be processed immediately.

Please send this form in with your payment

2016 Westbury Civic Club Dues

By filling out this form, you are giving the WCC permission to send you communications. We DO not sell your information or give it out to other entities.

Name(s) _____
 Address _____
 Home Phone _____ Work _____ Cell _____
 E-mail _____

**Make checks payable to:
 Westbury Civic Club, Inc.**

**Mail to:
 P.O. Box 975182
 Dallas, TX 75397-5182**

**Online payment:
 paypal.com—Send Money to
 westburycc@sbcglobal.net
 Make sure to include your
 address or account number**

Want to send your support in multiple payments? You may choose any

amount to pay in any increment throughout the year. Here are a few examples:
 2 payments of \$167.50 is \$335/yr
 3 payments of \$111.67 is \$335/yr
 4 payments of \$83.75 is \$335/yr
 5 payments of \$67 is \$335/yr
 12 payments of \$28 is \$336/yr

Westbury Civic Club Dues*	\$50	\$
Westbury Area Patrol	\$285	\$
Subtotal	\$335	\$
Additional Contributions:		
Westbury Civic Club		\$
Westbury Area Patrol (WAP)		\$
Total		\$

*The Westbury Civic Club Dues encompasses all operations, programs, and services including greenspace, of the Westbury Civic Club, except patrol services.

Thank you for supporting the Westbury Civic Club and our important programs. We can't do it without you!
 To contact the WCC Office, email westburycc@sbcglobal.net or call 713-723-5437.



Wondering what your
property is worth in
today's market?

Call **Larry Mercer** now
for a
FREE MARKET ANALYSIS!

713-826-7274

Make Larry's 36 years of
experience work for you.



RE/MAX Metro

2626 Richmond Ave

Houston, TX 77098

LARRY MERCER, BROKER

EMAIL: TheMercerTeam@yahoo.com

www.larrymercer.com

Westbury Area News

Loose Dogs

Social media has been full of stories about lost dogs or stray dogs in the Westbury area. It can be very stressful if a dog gets lost – both for you **and** the dog! If you own a dog, please get a microchip for your pet and make sure that the microchip contains your current contact information. A dog tag is also helpful, but tags and collars have been known to fall off. A microchip is easy to have inserted and can get you reunited with your dog quickly if the contact information is correct. Also, please do not allow your dog to run free. Keep your dog on leash or in your fenced-in backyard.

Westbury Meet & Eat

Come out to Teotihuacan Mexican Restaurant at 6579 W. Bellfort every 1st Thursday of the month to meet Westbury residents. This event is open to anyone who lives in Westbury.
January Meet & Eat: Thurs., January 7 @ 6PM
February Meet & Eat: Thurs., February 4 @ 6PM

Links for Lost & Found Pets in Westbury

Nextdoor Westbury - www.nextdoor.com
 Westbury Lost and Found Pets Facebook
<https://www.facebook.com/westburyhoustontexas?fref=nf>
 CARE- Contact at westburycare@gmail.com or at www.westburycare.com, Compassionate Animal Rescue Efforts is located in Westbury



Work Out Westbury "WOW"

Is one of your New Year's resolutions centered around fitness and health? There are lots of ways to get fit here in Westbury. Of course you can just walk the neighborhood sidewalks/streets, but there are other options.

Did you know there are wonderful trails at the Willow Waterhole? Now that milder temperatures are here, it is a great time to get out and walk and explore this beautiful nature reserve. Ask a neighbor to join you. For you stay-at-home parents, get your friends together for a picnic under the big oak tree at the Rafferty Memorial at Willow Waterhole (park on Ricecrest), and then let the kids run off their energy or push the little ones in their strollers on the concrete pathways. For you seniors, the concrete pathways are excellent. There are benches and picnic tables for those who would rather have a snack or rest in the peaceful environs.

A **walk** is helpful to burn up the extra calories from the holidays. With out of town guests, show off one of the jewels of our neighborhood by taking a walk around the park.

Did you know there is a great **newly renovated asphalt trail** at Hager Park (behind Anderson Elementary)?

Tennis? There are courts at Westbury Park, Hager Park and Chimney Rock Park. The backboard at Westbury Park has been replaced recently.

Basketball? There are courts at all three parks, too.

Running? Check out the Westbury runners' group on Facebook. <https://www.facebook.com/groups/westburyrunners/>

Vonnie Cobb Realtors, Inc.



*Your
Neighborhood
Realtor for
40 Years!*

Family owned and operated.
Pictured Vonnie Cobb and
Shannon Cobb.

Call us today for your
FREE Market Analysis!
713.664.1818



Professionalism with a Personal Touch

www.VonnieCobbRealtors.com • 4842 Beechnut • Houston, Texas 77096

RALPH RIEGER, CPA

We believe in service above Self!

Giving our clients peace of mind with sound tax planning and financial advice, effectively representing them in dealing with the tax authorities, and timely, tender, loving care in preparing their tax returns. Helping Texas business owners make their dreams come true by helping them create extraordinary businesses.



11415 Chimney Rock rieger@riegercpa.com 713-729-1122

ALL TYPES IRRIGATION, INC.

OVER 30 YEARS EXPERIENCE
*Design • Drainage • Installation • Service
 Commercial • Residential*

Emil Becker
 T.I.L. #4415
 D.L. #126891

Office: (713) 726-1636
 Fax: (713) 726-8322
 Cell: (713) 819-2872



Holiday Time in Westbury



2015 Holiday Lights & Decorations Winners

The Westbury Civic Club is proud to announce a new Holiday Lights and Decorations Contest. We ordered brand new signs this year and awarded 1st, 2nd, and 3rd place in each section of Westbury. The winners are listed below. For the first time, we have awarded a Best Neighborhood Street Award. This year's winner was the 5800 Block of Farwell in Westbury South. Congratulations!

Next year we hope to add more categories, such as People's Choice or Children's Favorite. These will be voted on by residents. We would love to hear any ideas or feedback you have. Email Jennifer at westburycc@sbcglobal.net.

Westbury 1

- 1st Place: 5222 Briarbend - Westbury Resident
- 2nd Place: 5235 Torchlight – Cindy and Wayne Patterson
- 3rd Place: 5103 Briarbend Dr. – David Maddigan & Joy Eckelkamp

Westbury 2

- 1st Place: 5442 Briarbend – Jason and Cheryl Leal
- 2nd Place: 5327 Redstart – The McClesky Family
- 3rd Place: 5454 Stillbrooke – Tom Matthews and Bob Hergenroede

Westbury 3

- 1st Place: 5211 Spellman – Diana Lovelady
- 2nd Place: 11403 and 11407 Landsdowne – Neighbors, Kim and Justin
- 3rd Place: 11615 Rampart - Lauren and Jennifer

Westbury 4

- 1st place: 11927 Dunlap St - Alan Moehue & Brent Leafgreen
- 2nd place: 5719 Effingham Dr - Elton Kasper & Lorine Kasper
- 3rd place: 11902 Chimney Rock Rd - Nicholl A Williams

Westbury 5

- 1st Place: 5523 Sanford – Greg Schmid
- 2nd Place: 10714 Braewick –Mary & Charlie Welch
- 3rd Place: 5943 Sanford – John & Lolly Moreno

Westbury South

- 1st Place: 5867 Green Craig – Scott Feeley
- 2nd Place: 5754 Southminster – Greg and Angela Dees
- 3rd Place: 5807 Firenza – Westbury Resident

Parkwest 1

- 1st Place: 10809 Atwell Dr. - John and Valencia Amenson
- 2nd Place: 5510 Hummingbird - John and Marcia Driskill
- 3rd Place: 10903 Atwell – Westbury Resident

Parkwest 2

- 1st Place: 5703 Benning - Don and Debbie Beckman
- 2nd Place: 5818 Spellman - Stephen and Sharelle Poth
- 3rd Place: 10803 Ashcroft Dr. - Scott and LouAnn Edwards
(Helpers: Bryan Edwards, William Nelson, Cody Ferguson)

Parkwest 3

- 1st Place: 5911 Belrose – Dave Cunningham and Jean Anderson
- 2nd Place: 6007 Cerritos – Lisa, Emily and Paul Clements
- 3rd Place: 5903 Arboles – Jeff and Karen Burns



2015 Deck the Halls Parade



What a great parade! A big thanks goes to the Mandell family for all their hard work on the Deck the Halls Parade. WCC President, Becky Edmondson and WCC Director Cindy Chapman rode in the parade as Dr. Suess' Thing 1 and Thing 2. The Westbury Civic Club and Westbury Community Garden also walked in the parade with goodies to handout along the route! There were hundreds of residents along the parade route! We can't wait until next year!



Little League 1966 World Champions

Are you ready for some Baseball !!!!

**2016 Spring Registration
Begins November 1st**

**Early registration ends November 30th
Registration ends January 30, 2016**

**Register early. Multiple child and referral discounts.
Spring tryouts start January 30, 2016
Spring baseball season begins February 27th**

www.westburyll.org

Volunteer Appreciation Breakfast

Have you ever wondered exactly what is a community? At the Southwest Houston 2000 Volunteer Appreciation Breakfast, held in December at Houston Baptist University, you would have seen what a real community looks like. Co-hosted by **Mike Bercu**, President of Southwest Houston 2000, and **Richard Rodriguez**, Executive Director of the Brays Oaks Management District, the breakfast recognized dozens of community partners. The boards of both entities were introduced and recognized along with long time volunteers to the two organizations. People like **Fred Meyer**, whose family has been operating quality commercial property for over 100 years in SW Houston; **George Nwanguma**, the Fiesta store manager; Westbury's very own **Cindy Chapman**, who serves on both boards; **Ralph Rieger**, as a commercial property owner; **David Hawes** the past Executive Director of the BOMD; and **Mehmet Okumus** of the Turkish Raindrop Foundation.



Westbury was well represented at the breakfast. The new **Neighborhoods To Trails -Southwest** group was recognized for their work to create a system of trails connecting many of our southwest Houston neighborhoods to Brays Bayou and the Willow Waterhole. **Eugene Sirls** represents Westbury in this group.

Virginia Livingston accepted an award on behalf of the Westbury Community garden. **Bill Burhans** accepted the award for the Willow Waterhole Greenspace



Conservancy. **Howard Sacks** accepted on behalf of the Levitt pavilion, Houston. **CM Larry Green** was recognized for all his work on behalf of the area and especially the painted electrical boxes that are found throughout Westbury.

The faith-based groups that came together to serve the flood victims were recognized; **Hannah Terry**, Minister of **Westbury United Methodist Church**, **Alan Lipman**, of the Jewish Community Center, **Stirling Pack**, of the Church of

Latter Day Saints, with **Neal Rackleff**, the Director of the City of Houston's Housing and Development. This diverse group surely personified the depth of the word community.

Our area schools, from private schools to public schools to universities were represented by the **Westbury Christian School** children's choir; **Principal Gasparello** of Sharpstown High School; and **Rick Ogden** from Houston Baptist University. HPD officers from the Braeburn Storefront and S. Gessner station were recognized as were **Matt Evans** and **Steve Moore** representing two companies, that are responsible apartment owners. **Marcy Williams**, of Super Neighborhood 36, was recognized; she was one of the women who inspired Westbury to become a recognized Super Neighborhood.



We thank all of the wonderful volunteers who give of themselves to make our Southwest neighborhoods a nicer place to live.

<p>Water Heaters: Regular & Tankless</p> <p>Disposals</p> <p>Water Lines</p> <p>Gas Lines</p> <p>Drain Cleaning</p> <p>Under Slab Repairs</p> <p>Re-route kitchen & laundry pipes</p> <p>M16312 ★ Since 1985</p>	<h2 style="margin: 0;">ASTRO PLUMBING</h2> <p style="margin: 0;">Full Service Plumbing and Repair Specialist</p> <h3 style="margin: 0;">713-256-0017</h3> <p style="margin: 0;">★ JOHNNY LEWIS ★</p> <p style="margin: 0;">WESTBURY RESIDENT</p>	<p>New Sewer Lines</p> <p>Hydrostatic Testing</p> <p>Remodeling & Repairs</p> <p>Sinks</p> <p>Faucets</p> <p>New Drains under Bathroom</p>
<p>★ Senior Discounts ★ All Major Credit Cards ★ Fully Insured</p>		

Boon Pet Care

Greenspace News

Hard to believe, but this is the time of the year to think about planting—especially trees and bushes—to liven up your home landscape. On January 23, **Westbury is celebrating Arbor Day** and Westbury's 60th Anniversary by planting 60 more trees on our esplanades and in our parks! See box to the right for more information.



Over the last 60 years, just about every tree you see on our 7 miles of esplanades or in our three parks were planted through the efforts of the Westbury Civic Club. In 2004, the WCC adopted a forestry plan and created a Tree Print proposal. Since 2004, we have planted and given away over 5,000 trees. In 2014, we took our tree plan one step further and started a tree farm at the Westbury Community garden. We are still actively looking for a volunteer who loves trees to manage the tree farm.

In the meantime, take it upon yourself to notice things. 3-1-1 is a great way to let the City know if something isn't right and mobile apps make it easy to send pictures with your complaint. Let the Civic Club office know as well, so we can follow up.

It takes all of us to make Westbury a wonderful place to live, so "If you see something, say something!"

Becky Edmondson and Marcia Hartman, met with Donald Perkins, District K office, to inventory spots that could use additional trees. Drought and disease have taken a toll on many of the trees we've planted over the years. They also met with Lawrence Wells, Houston Parks and Recreation Department (HPARD), to highlight our concerns regarding the care and upkeep for our greenspaces. Our goal is to have a smooth working relationship with HPARD, so that we can step in and assist them when necessary.

Plans are underway to improve some of our esplanade areas in the next few months, so don't be surprised if you see a flower bed being torn out here and there. Many of the items inhabiting our end-caps are worn out and need to be replaced (some have even been run over by vehicles!), and the Greenspace Committee is working hard to come up with practical ideas to beautify our featured beds. We are especially looking at planting permanent color (i.e., colorful bushes), to eliminate the need to change out bedding plants several times a year.

Arbor Day Celebration January 23 in Westbury

The District K Office is hosting an Arbor Day Celebration on January 23. This year's event will be in Westbury to kick-off our 60th Anniversary. We will be planting 60 trees on Arbor Day.

Centerpoint Energy has generously donated 50 15-gallon live oaks for District K's Arbor Day planting; we won't get all of them, but we intend to supplement what we do receive with trees from our own Westbury Tree Farm. So, come out and join the fun!

Please join us on January 23 and be a part of planting for the next 60 years. It will be a fun for the whole family. We will be planting on the esplanades and in the parks. Tentatively, we are looking to meet at 9AM at the Westbury Civic Club office. Look for specific info on social media closer to the date.

Become Part of the Westbury GREEN Team

Please contact Marcia Hartman, Director of Beautification for the WCC at mmhartman@hotmail.com to become a part of this great group.

WE ARE IN YOUR NEIGHBORHOOD

Since 1987



Wayne Murray Properties

We live and work in the neighborhood!



JACKIE MURRAY
Cell: (713) 825-9179

jackiem@waynemurray.net



KENDYL MAURER
Cell: (281) 904-8199

kendylm@waynemurray.net

**Area Residents
& Neighborhood
Specialists**



5518 Belrose
\$349,000



10927 Oasis
Just Listed!



5831 McKnight
Just Listed!



5922 Benning
\$289,900

**"We sell more, because we do more."
Over 40 Years of Experience!!**



4309 Kingfisher
\$364,500



5772 W. Airport
Just Listed!



Your Home Could Be Here!!



11406 Hillcroft
\$194,000



10723 Kirkside
\$249,900

Westbury Community Garden

Westbury Community Garden Gets New Driveway

The muddy driveway problems were solved with a much appreciated gift of funds and support from Brays Oaks Management District. Ralph Rieger, President of Willow Waterhole Greenspace Conservancy, provided the welcomed contractor referrals.

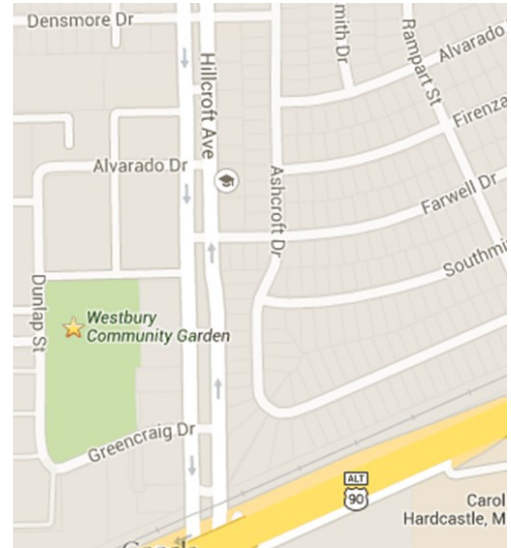


BEFORE



AFTER

Now gardeners and visitors are driving on a wonderful crushed concrete driveway installed by Dian Rivas, President and owner of HDT&T, as well as enjoying Juan Fernando's bobcat work!



WCG Recognized by SW Houston 2000

At a special volunteer appreciation breakfast, SW Houston 2000 presented the Westbury Community Garden an award for organizations that contribute services to our great community. Thank you to the dedicated volunteers! *Photo taken with award at WCG Holiday party.*



WHERE IS THE GARDEN?

12581 Dunlap (77035) is off Hillcroft between W. Airport and South Main. Heading south on Hillcroft, turn right onto Greencraig, follow it around the bend where it turns into Dunlap. The large blue roof on the WCG Pavilion is readily visible. Street parking.

Lindhurst's Construction

Also your local Bat Excluder,

The Batman

Insured with 40 years experience in painting & repairs
Certified in 2001 for humane removal of bats

Contact: Phillip Lindhurst
Phone: 713-981-9576
Email: Philsbats@att.net



YOUR LOCAL ROOFER SERVING WESTBURY SINCE 2006.



Brighter Futures Begin at WCS

To take the first step, attend a "Wildcat Wednesday" open house tour first thing - beginning at 8:40am - the first Wednesday each month, through May 2016.

WESTBURY CHRISTIAN

Ages 3 - 12th Grade • 713.551.8100 • westburychristian.org
10420 Hillcroft, Houston, TX 77096

Westbury Area School News

Johnston Middle School Beautification Day—March 5

Johnston Middle School (JMS) Parent Teacher Organization needs your help with our Beautification Day. This will be an event where the entire JMS community will work together for a common goal that will provide a tremendous opportunity for collaboration, creativity and fun.

The purpose of this beautification project is to improve, renew and upgrade the appearance of JMS, specifically the front of the school and courtyards. This will help to aid the perception of the school and its public appearance. As we all know, perception starts with the first impression, mostly visual perception. JMS students spend much of their day at school so we can only imagine how this project will enhance their pride about the school they attend.

Remember that JMS beautification will not be successful without your support. Your contributions can be in the form of merchandise donations, gift certificates for products or services and/or monetary donations. We appreciate any amount, however large or small. All donations commitments need to be received by February 14th, 2016. We are a non-profit organization and your donations will be tax deductible.

If you have any questions or need any additional information, please email the PTO at jms1caldwell@gmail.com or annieguerra@att.com.



Parker Elementary

The construction project to replace Parker Elementary is one of the 2012 school bond projects anticipated to need additional funds. The HISD Board of Trustees voted at the December 2015 board meeting to approve a proposal to add up to \$ 212.4 million for the entire 2012 bond program. The additional money will be funded through the issuance of Maintenance Tax Notes and reserves from the 2007 voter-approved bond. The new debt is not expected to impact other school district needs, nor will it impact the district's credit rating or tax rate.

As a result of the HISD board vote, the Parker Elementary replacement building project will be eligible for about \$3 million in additional funding. The permitting process for the new building is slightly ahead of schedule since the city has already responded with its comments and questions about the proposed construction package.

Advertisements for construction bids will be published in the January 2 and January 9 "Houston Chronicle" newspaper, with bids due back by February 9. A decision by the HISD board to approve a construction bid for the new Parker Elementary could be as early as March 2016.

Westbury High School PTO Meeting

At the December 2015 Westbury High School PTO meeting, Principal Monaghan announced the school schedule for WHS will change for the spring semester, with a goal to reduce tardiness and absences. There will not be any more "Late Start Thursdays". There will not be any more early dismissals on Wednesdays, unless it is a district-wide early dismissal day. School hours will now be from 7:45 AM to 3:15 PM, each and every day. Additionally, the school is switching to a block schedule.

The school plans to create a recruiting video. There was general discussion that the poor physical condition of the school facilities hurts school enrollment. One enrollment enticement is that WHS is one of 3 high schools in HISD that offers Fire Fighting training.

WHEN YOU WANT THE JOB DONE RIGHT THE FIRST TIME!

Since 1975

american SERVICES

With Exclusive **Call Now: 713-782-2989**

WWW.ASAMERICAN.COM

FOUNDATION REPAIR & PLUMBING SPECIALIST

- ❖ Exclusive Ameri-Link System
- ❖ Lifetime Transferable Warranty
- ❖ FHA/VA Approved
- ❖ Licensed & Fully Insured
- ❖ Warranties Available on Existing Piers

STATE LICENSED

- ❖ City Permits & Inspections
- ❖ Hydrostatic Testing
- ❖ Sewer Reroutes
- ❖ Tunneling Experts
- ❖ Leak Detections
- ❖ Gas Leaks & Repair

Leak Detection Experts

Hello My Name is **ROBERT**

"CALL TODAY SO I CAN GIVE YOU AN HONEST FREE ESTIMATE"

SAVE \$100.00 OR 5% OFF ANY FOUNDATION REPAIR OR CONCRETE WORK

CONCRETE WORK Driveways, Patios, Etc....

SAVE \$50.00 OR 5% OFF ANY PLUMBING REPAIR

BLUEPRINTS & DESIGN

Gold Star Member MPL - 15997

Election Results

Mayoral Election Editorial

Editorial by Cindy Chapman and Becky Edmondson (Co-Presidents of the Westbury Super Neighborhood)

This mayoral election was astonishing. The initial election featured numerous experienced candidates and then the runoff election between Bill King and Sylvester Turner was so tightly contested that only a few thousand votes separated the two finalists. Congratulations to newly elected Mayor Sylvester Turner!

The Westbury Civic Club, the Westbury Area Improvement Corporation, and the Westbury Super Neighborhood do not endorse candidates. As Super Neighborhood Co-Presidents, we attended mayoral forums and debates and have had the opportunity to talk to both of the candidates. We are pleased that the political process provided two such highly qualified candidates for the runoff election.

From our point of view, both mayoral runoff candidates, Bill King and Sylvester Turner, ran

campaigns that focused on issues. Both candidates made a point to meet with neighborhood representatives to learn what our neighborhood issues are. Both candidates toured the Willow Waterhole Nature Reserve, one of the crown jewels of Westbury. Both candidates fought fiercely for Westbury votes since Westbury has a high voter participation rate and the Westbury Super Neighborhood was a swing area. Some Westbury area precincts went for King and some went for Turner.

Just a few days after winning the mayoral runoff election, Mayor Elect Sylvester Turner attended the Super Neighborhood Alliance (SNA) meeting. Westbury is an active participant in the Super Neighborhood Alliance. Mayor Elect Turner reiterated that infrastructure and neighborhoods are important. He values input from the SNA and neighborhoods. He emphasized that he wants to represent everyone in Houston, whether they voted for him or not.

As Super Neighborhood Co-Presidents, we look forward to working with our newly elected mayor.

Election Results

Westbury Precincts Vote!

Westbury residents again went to the polls for the recent city runoff election. Westbury's four main precincts averaged 34% which was down 6% from the November election. It was a long grueling campaign season for all the candidates and their supporters. Houston, for the first time, will have four year terms so it will be interesting to see if more can be accomplished when our elected officials aren't having to run for office every two years.

Many thanks to the poll workers and precinct judges who put in long hours during Election Day proceedings. Westbury appreciates you all!

Precinct	Registered voters	Actual Voters	% Voted
14: Parker Elementary	1862	732	39.31
146: Platou Community Center	1982	686	34.61
291: Houston Christian Fellowship	1195	373	31.21
293: Anderson Elem.	1731	539	31.13
Westbury Only Precincts	6700	2330	34.05
281: Kolter Elementary	2596	1058	40.75
403: Westbury Baptist Church	1699	715	42.08
693: Braeswood Assembly of God	660	217	32.87
453: Spanish United Pentecostal	1914	260	13.58
22: Foerster Elementary	2378	426	17.91

We fix sick.

Cold or flu, we've got the know-how to get you feeling better.

713.691.6493 nextlevelurgentcare.com
Open 9am-9pm, 7 days a week • 8 Convenient Locations

Get in line online!

Our new app takes convenience to a whole new level.

New Next Level mobile app available now!

- Get in line online!
- Avoid the waiting room altogether
- We'll text you when your exam room is ready
- Consult with on-call nurse
- Share app with family & friends

Text NEXT LEVEL to 49798 for the link to directly download our new app.

next level URGENT CARE



LOHMAN LAW FIRM, PLLC

General Practice & Family Law
Wills and Supporting Documents, Trusts,
Estate Administration, Probate;
Divorce, Child Support, Family Rights;
Collaborative Law & Mediation;
Civil/Criminal Representation;
Maritime Investigations/Consultant

Free 30-Minute Consultation

www.lohmanfirm.com

713-714-4601



Jon Lohman
5322 W. Bellfort, Ste. 111
(W. Bellfort @ Chimney Rock)

**FREE ONE-HOUR INITIAL CONSULT INCLUDING
REVIEW OF PRIOR YEAR TAX RETURN!!!!!!**

Pam Schertz, CPA, LLC
Small Business Computerized
Accounting Services & Training
Certified QuickBooks Pro Advisor
Individual & Small Business Tax Returns
Payroll processing and tax filing.
5322 W. Bellfort Ste. 211/212
Call for appointment today
281-974-2096



FARMERS
INSURANCE

*Auto-Home-Life-Renters-Condo-Boat-Flood
Motorcycle-Business-Commercial Auto*
I have access to five home insurance providers

Peter Zografos Agent
5322 W. Bellfort #206
(713)-877-8811
pzografos@farmersagent.com
www.farmersagent.com/pzografos



ASTRO PLUMBING

“YOUR PROFESSIONAL PLUMBER”
BEST PRICES • FREE ESTIMATES • SENIOR DISCOUNT

CALL JOHNNY
Cell: 713-256-0017

JOHN LEWIS
M16312

ALL MAJOR CREDIT
CARDS ACCEPTED

Legal Eagle CONTRACTORS REMODELING
Since 1974
www.legaleaglecontractors.com
Houston's Most Trusted Contractors

BBB ACCREDITED BUSINESS
BBB Rating: A+
QR Code

Dan Bawden, Master Builder
713-723-8850
Come see our Showroom at
5008 Locust Street
at South Rice, Bellaire

**Design and Build
Kitchens ★ Baths ★ Additions**

Westbury's favorite remodeler for over 25 years!

Senior-focused Remodeling is our Specialty

NARI NATIONAL ASSOCIATION OF THE REMODELING INDUSTRY
G.H.B.A. GREATER HOUSTON BUILDING ASSOCIATION

* 2016 * Happy New Year * 2016 * Happy New Year * 2016 * Happy New Year * 2016 * Happy New Year * 2016 * Happy New Year * 2016 *

COLDWELL BANKER
UNITED, REALTORS®
Buying, Selling Or Leasing

Tony & CharlseY Porcarello
*** Westbury Specialist ***
Tony: 713-898-1546 tporcarello@yahoo.com
CharlseY: 713-898-1484 charlseY@swbell.net

We Know Westbury and Call it Home for 37 Years!

5637 Valerie \$315,000
5430 Willowbend L@@@K We SOLD Another One!
5822 Dryad L@@@K We SOLD Another One!
5259 Creekbend *Coming Soon*

* 2016 * Happy New Year * 2016 * Happy New Year * 2016 * Happy New Year * 2016 * Happy New Year * 2016 *

* 2016 * Happy New Year * 2016 * Happy New Year * 2016 * Happy New Year * 2016 * Happy New Year * 2016 *



* 2016 * Happy New Year * 2016 * Happy New Year * 2016 * Happy New Year * 2016 * Happy New Year * 2016 *