



# Westbury Crier

VOLUME 60, ISSUE 1

JANUARY 2015

## Support the WCC: Pay Your 2015 Dues

A big thank you to all of you who pay your dues each year. Your participation is one of the reasons that Westbury was listed in the top neighborhoods in Houston. Having a strong civic club advocating on behalf of the neighborhood, enforcing deed restrictions, and beautifying the public areas is so important to Westbury's future. Won't you become a part of it? Read about our accomplishments in 2014 on page 8 and see the many things that your membership in the WCC provides on your behalf on page 12. The Voluntary Dues form is on page 13.

The **WAP patrol** puts certified police officers in our neighborhood and on our streets. Their visibility (even if you think you do not see them, the criminals know they are around) coupled with their quick response time makes them an invaluable component of neighborhood safety. The **Greenspace** dues beautify our esplanades and parks; plants and waters trees; delitters and

mows common areas; and maintains our subdivision markers. Did you know that plantings on the esplanades slow traffic? Your **Westbury Civic Club** dues provides office space; an office manager; support for the volunteer board; support for residents; outreach projects and produces the Crier.

Please write a check today. We need **EVERYONE** to pay their dues. It is unfair to the thousands of residents who do pay their dues for you to receive the benefits without paying for them. The work continues on your behalf and Precinct 5 patrols by your home; please pay your fair share. If you are a renter; ask your landlord to pay on your behalf. A safe, secure nice place to live is what every landlord should want for their tenant.

For just 80 cents a day you can protect your investment in your home. Remember, working together, we really can make a difference.

## SPECIAL TRASH FEATURE ON PAGES 6 & 7



⇒ What is the difference between Junk Waste, Tree Waste, Yard Waste?

⇒ What can I take to the city's different recycling centers?



⇒ When is heavy trash pick up for my house?

⇒ My trash can broke, what do I do?

**Check out pages 6 and 7 for all the answers and more!**



WCC Green- Tree Planting 2014



WCC Advocacy- Speaking before



White Elephant Sale



[WWW.WESTBURYCRIER.COM](http://WWW.WESTBURYCRIER.COM)

### Urban Harvest Annual Fruit Tree Sale : Jan. 17

See page 17  
for  
info



### Cocoa With the Constables

January 21  
6PM-7PM  
Westbury  
Baptist Church

See page 11 for more details



WCC Advocacy- Meeting with City Council



WCC Outreach- Coffee With Constables

## IN THIS ISSUE:

Platou Center and Meyer Library	4
Event/Trash Calendars	5
Special Trash Feature	6-7
2014 Accomplishments	8
Green Team	9
Holiday time in Westbury	10
Crime/Security	11
2015 Dues/Assessments	12-13
2015 Budget	15
SW2000 & Flood Control	16
Gardening	17
NEW Parker Elementary	18
Willow Waterhole	20
Westbury School	21
Tommie Allen 1936-2014	22
Southern Crushed Concrete	23

## Westbury Civic Club Board of Directors

President	Becky Edmondson	wccpresident@westburycrier.com
Vice President	Marcia Hartman	wccvp@westburycrier.com
Secretary	Mark Knoblauch	
Treasurer	David Cummins	westburytreasurer@gmail.com

## Directors at Large

Communications	Libby Mondello	
Community Relations	Cindy Chapman	wcccommunityrelations@westburycrier.com
Deed Restrictions	Jennifer Edmondson	wccoffice@westburycrier.com
Flood Control & Infrastructure	Jeff Benavides	
Greenspace Beautification	Carlos Mata	
Membership	Kate Wilson	
Security	Leslee Cross	wccsecurity@westburycrier.com
Volunteer Coordinator	Stephanie Lester	westburystephanie@gmail.com

## Section Directors

Westbury 1	VACANT	
Westbury 2	Rocio Lara	
Westbury 3	Robert Montgomery	rmontgomery002@comcast.net
Westbury 3	Charlsey Porcarello	charlsey@swbell.net
Westbury 4	Eugene Sirls	
Westbury 4	Amanda Bess	
Westbury 5	Virginia Livingston	Westbury5E@westburycrier.com
Westbury 5	Heath Campbell	
Westbury South	Robert Capps	
Parkwest 1	William Grimsinger	
Parkwest 2	Jeffrey Weiss	jhweiss@yahoo.com
Parkwest 3	Joe Niles	Parkwest3@westburycrier.com

## Westbury Civic Club Office

**Office Hours:** Monday—Thursday 9:30AM-1:30PM\*, Closed Fridays

**Address:** 5322 W Bellfort Ste. 107 Houston, TX 77035

**Phone:** 713-723-5437      **Office Manager:** Jennifer Edmondson

**Email:** Westburycc@sbcglobal.net

\*The office is closed on all major holidays, weekends (follows HISD calendar)

**NOTARY SERVICE IS AVAILABLE TO ALL WESTBURY RESIDENTS during office hours or by appointment**

## USEFUL PHONE NUMBERS

**Westbury Area Patrol Constable Dispatch**  
**281-463-6666**

HPD Non-Emergency  
713-884-3131

Power Outages (Centerpoint)  
713-207-2222

Westbury HPD Storefront  
713-726-7126

Platou Community Center  
713-726-7107

Poison Control  
1-800-764-7661

Street Light Repairs (Give pole number)  
713-207-2222

**District K Councilmember Larry Green**  
**832-393-3016**

District C Councilmember Ellen Cohen  
832-393-3004

County Commissioner El Franco Lee  
713-755-6111

Deed Restriction Enforcement (City Legal)  
832-393-6333

## City of Houston 311 Hotline (for all Non-Emergency Issues)

Forestry Department  
Graffiti

Hazardous Waste Disposal  
Heavy Trash

Neighborhood Protection  
Parking Management

Recycling

School Crossing Light Repairs  
Water and Sewer Repair

## Stay connected!

Are you one of the 1,219 likes on  
our Facebook page,  
Westbury Houston?

## NEWSLETTER INFORMATION

**Published by:** Westbury Civic Club, Inc

**Editor-in-chief:** Jennifer Edmondson

**Edited by:** WCC Publication Committee

**Advertising:** Call 713-723-5437 or email  
westburycc@sbcglobal.net

**Ad Disclaimer:** The WCC neither represents nor endorses any advertisement in the newsletter. Perform your own due diligence before contacting any advertiser.

© Copyright WCC 2014 , All Rights Reserved

**WWW.WESTBURYCRIER.COM**

## President's Message

Happy New Year! 2014 ended on a busy note and I suspect 2015 will be more of the same. 2014 was a good year and you can read about the neighborhood accomplishments on page 8. To me, the most important accomplishment in 2014 was the saving of the Westbury Community Garden, thus creating and ensuring 7 new acres of green space in Westbury. The Westbury subdivision covers 1,800 acres. Prior to 2004 there were just 18.3 acres of park space. Westbury Park has 6 acres, Chimney Rock Park has 2.8 acres, and Hager Park has 9.5 acres. Westbury SuperNeighborhood covers 2,368 acres and also includes 260 acres of the Willow Waterhole Park.

Along our bayous, ditches and on our esplanades we have another 100 acres of greenspace. It has long been a goal of the Westbury Civic Club to create a "Green Network" of trails and bicycle pathways. In 2015 we hope to move forward with this plan and Allen Potvin has volunteered to lead this initiative. Watch for more announcements and ways in which you can help with this project.

You will read in the Crier about the TCEQ hearing regarding Southern Crushed Concrete's application to start a Concrete Batching operation in the Westbury Super Neighborhood on Gasmer (page 23). We have to be vigilant in our efforts to protect our neighborhood. We successfully stopped a cell tower company from putting a tower on West Bellfort in FRONT of Home Depot. We successfully SAVED seven acres as green space and stopped an unnecessary housing project. We may not always be successful, but we want it known that we in Westbury care about our neighborhood and are willing to fight to protect it.

We are working with our HISD schools to offer what assistance we can to insure that our schools will be neighborhood schools of choice. We work with Parker, Anderson, Foerster, Johnston MS, Fondren MS and Westbury High schools. Education is so important and we must work to be sure that HISD is offering the best education possible for our children.

What was the highlight of the year for me as president of the Westbury Civic Club? Sitting around the conference table in Mayor Parker's office in April working on a solution for the Garden! As I looked around that table, I realized I had friends that I never would have made had I not volunteered. There were my good friends and cohorts from the neighborhood, Cindy Chapman and Marcia Hartman. From District K, there were Larry Green and Donald Perkins, both good friends, not only to me but to Westbury. There was our friend, the head of the Parks Dept., Joe Turner, who has done so much to create a green identity for Houston. There was our friend David Hawes of the Brays Oaks Management District and so many more. The Mayor and her staff rounded out the rest of the table. My life is much richer in friendships for having joined the Westbury Civic Club. I have met so many wonderful Westbury residents. It has been my honor to serve as president. I thank you all for your support and friendships.

What is coming in 2015? Beautification work on the esplanades; a big celebration for the Westbury Community Garden's 5th birthday; the White Elephant sales; more tree giveaways; more neighborhood outreach events like Coffee with the Constable and lots of advocacy by the volunteers of the WCC!

Won't you join me by paying your dues for 2015? We've done a lot, but there is so much more to do. And we can't do it without YOU! Please pay your dues.

Wishing you a very happy and healthy 2015!  
Becky Edmondson



CM Larry Green, WCC VP Marcia Hartman, WCC President Becky Edmondsn, WCC Director Cindy Chapman

**HAVE A QUESTION,  
COMPLAINT,  
COMPLIMENT?  
I WANT TO HEAR  
FROM YOU!  
EMAIL ME  
WCCPRESIDENT  
@WESTBURYCRIER.  
COM**

**WCC Board  
Meeting  
Wednesday,  
January 21  
7PM-9PM  
Westbury  
Baptist**

### It's time to pay your dues!

Please send in your support which:

1. protects your investment in your home by keeping Westbury a strong and vibrant neighborhood
2. protects your home and family with the Constable service
3. improves the look of our greenspaces
4. keeps the doors to your Civic Club office open

**The dues form is on page 13.**





# Platou Community Center

11655 Chimney Rock / Hours: Mon-Thurs 12PM—8PM; Fri 11AM-7PM  
Supervisor: Dan Reilly, Daniel.reilly@houstontx.gov or 713-726-7107

**STRETCHING EXERCISE CLASS**  
**Monday, Wednesday, Friday from 9-9:45AM**  
*Improve your flexibility by joining this non-strenuous exercise class. No registration required. Wear comfy clothes.*

**MsBEEHAVEN QUILTERS**  
**Tuesdays from 10AM to 2PM**  
*For more information, contact Janie at 713-721-5526*



**GAMES**  
**Wednesdays from 10AM to 12PM**  
*For more information, contact Wally at 713-729-9310*



**LINE DANCING**  
**Mondays @ 12:30PM**  
*For more information, contact Dan at 713-726-7107*

**TOPS: TAKE OFF POUNDS SENSIBLY**  
**A Weight Loss Support Group, Tuesdays, 5:45-7PM**  
*Drop in to preview the program or call Dorothy at 713-723-4441 or Naomi at 713-988-2233*

**Adult and Kid Ping Pong Leagues**  
Leagues begin the 2nd week of January. Kids will be on Wednesday evenings starting Jan. 14. The Adult ping pong will be on Fridays from 11AM to 2PM starting on January 16.  
Any age and skill level is welcome to compete. For any questions or more information, call Dan at 713-723-7107

**Openings for Groups, Activities, or Programs and more!**  
Openings in the evenings from 6-8PM for any type of adult programs, games, sewing, crafts, projects or fitness.  
Thursday morning from 10AM to Noon or 1PM is also open if anyone would like to organize a group or run an activity. Portable projects group is taking a break this year.  
Call Dan at the Platou Center for more info. 713-723-7107

**After School Enrichment**  
Youths, ages 6 through 13, can register for After School Enrichment which provides guided activities, including time to do homework. Call Dan Reilly at 713-726-7107 for more information.

**"Like" the Platou Community Center on Facebook**

**713.960.6222**



**MEYERLAND WINDOWS & DOORS**

**CALL FOR A FREE ESTIMATE TODAY!**

MIKE@MEYERLANDWINDOWS.COM  
MEYERLANDWINDOWS.COM

IBEW LOCAL 14600 ACCREDITED BUSINESS

**Meyer Neighborhood Library**  
5005 W. Bellfort  
Phone: 832-393-1840 / [www.houstonlibrary.org](http://www.houstonlibrary.org)

**January 2015 Events**

**Family Story-time :** Every Wed. & Saturday at 10:30 AM

**Adult Mystery Book Club**  
Call the Meyer Library for info regarding the Adult Book Club.

**HOURS**  
Monday: Closed  
Tuesday: 10AM-6PM  
Wednesday: 10AM-6PM  
Thursday: 12PM-8PM  
Friday: 1PM-5PM  
Saturday: 10AM-5PM  
Sunday: Closed

**Dick n' Sons Floor Covering Center**  
6240 Bissonnet, Houston, Texas 77081  
**713.981.1900**  
[www.dicknsons.com](http://www.dicknsons.com)  
*Serving Westbury over 40 Years!*



Fine Floor Coverings for Every Budget

**Carpet, Cork, Laminate, Vinyl, Hardwood, Ceramic Tile & Countertops!**  
M-F 8-5 Thurs. 8-7 Sat. 10-4  
6 Months No Interest Financing

# What's Happening in Westbury

## Events & Meetings Calendar January 2015

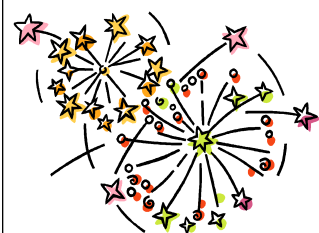
<b>Thurs 1</b>	Happy New Year WCC Office Closed
<b>Thurs 8</b>	Westbury Meet & Eat at Teotihuacan @ 6PM 6579 W Bellfort Open to all Westbury residents
<b>Mon 12</b>	Westbury Community Garden Meeting 6:30PM Platou Community Center— 11655 Chimney Rock
<b>Tues 13</b>	SW Houston 2000 Bi-Monthly Breakfast 7AM See page 16 for more information
<b>Sat 17</b>	Audubon Society Bird Survey 7AM Meet at The Gathering Place parking lot—5310 S. Willow
<b>Sat 17</b>	15th Annual Fruit Tree Sale 9AM Rice University—Greenbriar Lot—5600 Greenbriar See page 17 for more information
<b>Mon 19</b>	WCC Office Closed Federal Holiday
<b>Mon 19</b>	Brays Bayou Association Meeting 7:30PM The Gathering Place—5310 S. Willow
<b>Wed 21</b>	WAIC/Super Neighborhood #37 Meeting 8:30AM Salem Lutheran Church— 4930 W. Bellfort
<b>Wed 21</b>	Westbury Civic Club Board Meeting 7PM Westbury Baptist Church—10425 Hillcroft
<b>Weds 21</b>	Cocoa With the Constables 6PM-7PM Westbury Baptist Church—10425 Hillcroft See page 1 or 11 for more details
<b>Tues 27</b>	SW PIP (Police Positive Interaction Program) Meeting 7PM Aramco Building by Hobby Lobby
<b>Feb. 1</b>	Mandatory Assessments Due

### Planning Calendar

\*Feb. 1— Assessments due for  
Parkwest 1 and Parkwest 2

\*Feb. 5 - Meet & Eat (see pg 19)

\*Feb. 27 —Rodeo Trail riders at Westbury Area  
Schools



Happy New Year  
from the  
Westbury Civic Club!

## RECYCLING AND HEAVY TRASH CALENDAR

January 2015	
<b>Thurs 8</b>	Curbside Recycling All of Westbury
<b>Thurs 8</b>	Heavy Trash- <b>TREE WASTE ONLY</b> <b>ALL OF WESTBURY</b>
<b>Thurs 22</b>	Curbside Recycling All of Westbury

February 2015	
<b>Thurs 5</b>	Curbside Recycling All of Westbury
<b>Thurs 12</b>	Heavy Trash- <b>JUNK WASTE</b> <b>ALL OF WESTBURY</b>
<b>Thurs 19</b>	Curbside Recycling All of Westbury

### Important Trash & Recycling Info

- ♻️ Trash cans need to be on curb by 7AM each Thursday
- ♻️ Trash cans must be removed by 10PM each Thursday
- ♻️ Trash cans must be placed at least 3 feet apart
- ♻️ Trash cans must be stored out of sight.
- ♻️ Yard waste **MUST** be in correct biodegradable bags
- ♻️ Heavy trash can be placed starting at 6PM the Friday before pick-up
- ♻️ **YARD WASTE** is not considered tree waste. It is collected on regular Thursday trash day
- ♻️ Call 311 for all trash questions and complaints
- ♻️ Nearby Trash Depositories and Recycling Centers: **SW Trash Depository/Recycling Ctr** 10785 SW Frwy / Hours: Wed.—Sun. 9AM to 6PM; Accepts Junk Waste, Tree Waste & Recyclables.
- ♻️ **Environmental Service Center** - 11500 S. Post Oak Hours: Tues/Wed 9AM-3PM; 2nd Sat 9AM-1PM. Accepts Hazardous Household & Electronic Waste.
- ♻️ Refer to [www.westburycrier.com](http://www.westburycrier.com) or [www.houstontx.gov](http://www.houstontx.gov) for more trash and recycling information

### City of Houston Heavy Trash Schedule

January	Tree Waste	May	Tree Waste
February	Junk Waste	June	Junk Waste
March	Tree Waste	July	Tree Waste
April	Junk Waste	August	Junk Waste

# SPECIAL TRASH FEATURE

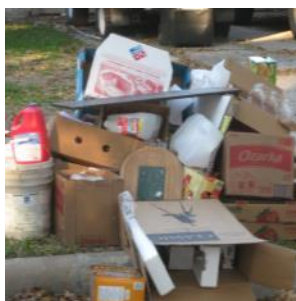
## 2015 Monthly "Junk Waste" or "Tree Waste"

Unlike many cities, the City of Houston provides residents with FREE curbside monthly heavy trash collection, alternating "TREE WASTE" collection months with "JUNK WASTE" collection months. The collection cycle is the same every year, as shown below. **ALL of Westbury is picked up on the 2nd Thursday of each month.**

TREE WASTE MONTHS	JUNK WASTE MONTHS
January	February
March	April
May	June
July	August
September	October
November	December

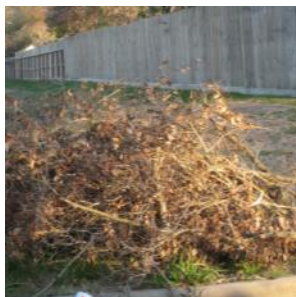
### What is "Junk Waste"?

"Junk Waste" includes furniture, appliances, lumber, fencing, and other bulky items (including tree waste, but the tree waste would then be sent to landfill rather than mulched). The city will NOT collect bagged yard waste placed in improper bags during a Junk Waste month.



### What is "Tree Waste"?

"Tree Waste" consists of tree limbs, shrubby limbs, or branches of trees and shrubs. If the Tree Waste has other types of materials mixed in with it, then it is no longer Tree Waste. Lumber, fencing and similar materials are NOT considered Tree Waste. During a Tree Waste month, only Tree Waste materials will be collected.



### What is "Yard Waste"?

"Yard Waste" consists of leaves, grass clippings, small yard trimmings or branches. Yard Waste must be in a city-approved bag, or small branches bundled (tied) into a pile less than 4 feet long, less than 18 inches in diameter, and less than 50 pounds in weight. "Yard Waste" is picked up every Thursday.



## Trash Can Placement

Household garbage must be put inside the city-provided container which should be placed at the curb between 6PM Wednesday evening and 7AM Thursday morning. The container must be accessible to the automated collection truck and not blocked by obstacles, including parked cars. Homeowners with multiple trashcans MUST place trashcans three (3) feet apart. Do not place cans next to light poles or trees. The city has started tagging cans that are placed incorrectly. Homes on corners must place their trash cans on the front street (not side). Trash cans must be removed from the curb by 10PM Thursday.



TRASH CAN PLACEMENT  
EXAMPLES



**Too much trash this week?** Buy "tags for bags" from Fiesta, HEB and participating Kroger stores so city will pick up your extra bags of trash. Cost is \$ 2 per tag, plus tax.

**What goes in the large green bin?** Recyclables such as steel or aluminum cans. Paper. Certain plastics, not # 6. Glass IS allowed in the large recyclable bins. Recycling is picked up every other Thursday.

**What goes in the large black trash bins?** Household garbage such as personal trash and food preparation waste are to be placed in the large black trash bins. Household garbage day is Thursday. No yard waste, dead animals, household hazardous waste, or electronics.

**JANUARY HEAVY TRASH**  
**Tree Waste Only**  
**Thursday, Jan. 8**

**ON THE SPOT**  
PRESSURE WASHING SERVICES

STATE OF THE ART HOT WATER CLEANING WITH  
ADVANCED HYDRO-SCRUBBING TECHNOLOGY

**281.701.4412**

OTSPressureWashing.com

**Maxx Gonzalez**  
El Arte D'Pintar

Expert Int./Ext. Paint  
**832-212-0739**  
maxx@maxxgonzalez.net  
www.maxxgonzalez.net

◆ Sheetrock Repair ◆ Stain  
◆ Fancy Texture ◆ Walls ◆ Faux Finishing



## SPECIAL TRASH FEATURE

### Environmental Service Center – South

(Recycle and Household Hazardous Waste)

**11500 South Post Oak - between Gasmer and South Main**

The Environmental Service Center accepts household hazardous waste such as anti-freeze, fuel, oil, paint, paint thinner, pesticides, herbicides and household cleaners. Residential electronic scrap items will also be accepted (monitors, televisions, printers, keyboards, mice, scanners, fax machines, telephone handsets, VCRs, CPUs, cellular phones and other small consumer electronics). These items should not be placed on the curb with or in your container for collection with garbage or heavy trash pick-up. The center is open every Tues. and Wed. from 9AM to 3PM and the 2nd Saturday of the month from 9 AM- 1 PM.



Items that can be taken to the Environmental Service Center

### Reuse Chemical Take Away (FREE)

The City of Houston's Environmental Service Center South offers free paint and household chemicals. Located at 11500 South Post Oak Road, the Center is open for reuse chemical distribution on Fridays from 9AM to Noon. First come, first served.

### ReStore (Craft Items, Books, Post Consumer & Industrial Scrap - FREE)

The ReStore, which acts as a book swap, recycling info library, as well as a repository for craft items and post consumer and post industrial scrap ( useful for art projects). Located at 11500 South Post Oak, items can be taken away from 9AM - Noon every Friday during the Reuse Chemical Take-Away.

### Trash Violations

Violation of any provision of the solid waste ordinance is punishable upon first conviction by a fine of no less than \$50 nor more than \$2,000. Each subsequent conviction is punishable by a fine of no less than \$250 nor more than \$2,000. Each day that any violation continues may be punishable as a separate offense. **To report a violation or to file a complaint, call 311.** Solid Waste Management Department Supervisors can write citations.

### Southwest Neighborhood Depository & Recycling Center (for Heavy Trash Drop-off)

**10785 Southwest Freeway Houston, TX 77074**

**Phone: 713.541.1953**

This facility accepts Junk Waste, Tree Waste and Recyclables at no additional charge to City of Houston residents. Citizens may use the depositories four times per month. You must provide a Texas Driver's License or ID and a current utility bill or city property tax receipt. **The depositories will also accept the following items:** Furniture, Tree limbs, Stoves, Refrigerators, etc., 10 auto tires (Rims Not Accepted)  
Open Wednesday - Sunday, 9AM to 6PM.

### Westpark Recycling Center

**5900 Westpark**

This facility is a drive through operation so you do not have to unload your vehicle. **The center accepts:** aluminum and tin cans, oil filters, used tires, computers, #1-7 plastic containers, GLASS bottles and jars, telephone books, office paper, cardboard, magazines, and used motor oil. Newspapers placed in a brown bag will also be accepted.  
Open Monday- Saturday from 8AM to 5PM.

### Reuse Warehouse

**9003 N. Main St.**

The facility accepts material from individuals, supply companies, and builders, and makes it freely available for reuse by any non-profit organization.

Open Tuesday thru Friday from 8:30AM to 4:30PM and every 2nd and 4th Saturday of the month from 8:30AM to 4:30PM

### Christmas Tree Recycling

The City of Houston encourages residents to recycle Christmas trees. The recycled trees will be converted into mulch, which will help save landfill space and help preserve the environment.

**Trees WITHOUT artificial snow, tinsel, or stands:** In Westbury, these trees will be collected for recycling by the city during the January "Tree Waste Heavy Trash" pickup. They may be placed at the curb starting Saturday January 3, for collection on **January 8** for ALL of Westbury. Trees for recycling may be taken to our Southwest Neighborhood Depository at 10785 Southwest Freeway.

Locally Owned & Operated • Free Estimates  
30+ Years of Experience • Honest & Reliable  
Bathroom & Kitchen REMODELING

Call 281-850-0795 or visit

[www.RemodelingJML.com](http://www.RemodelingJML.com)

for Quotes & Estimates

**SERVICES INCLUDE** (but not limited to)  
All Building Types • Interior & Exterior • Doors • Decks  
Stripping • Painting • Staining • Refinishing • Repairs  
Fences • Counter Tops • Crown Molding • Flooring  
Cabinets • Drywall • Masonry Painting • Hardi Siding



Additional Savings for  
Angie's List Customers.  
Call for Details!

**10% OFF**  
**ANY JOB of \$250**  
**or MORE**

Not valid with any other offer.  
Must present coupon. Expires 12-10-14.



# 2014 Accomplishments

Our purpose, as set out by the WCC bylaws is: "to improve the appearance of the Westbury area and promote the civic, cultural, educational, health, and general welfare of the residents of the Westbury and Parkwest subdivisions." The Westbury Civic Club is a volunteer organization made up of Westbury residents who give their time and energy to make Westbury a great place to live. We thank our office manager (the only paid position), Jennifer Edmondson, for all her support of the board and the residents of Westbury. It's not the easiest job being at the beck and call for 5,000 homes and a board of 24!

**Here are some 2014 highlights:**

## Parks:

**Westbury Community Garden:** As possibly our greatest accomplishment ever, the 7-acre Westbury Community Garden was saved from development! An ordinance was passed allowing the City to take possession of the property from the Houston Housing Authority. **Platou Center:** The Friends of Chimney Rock Park group won an award for their summer science program at the Community Center. **Hager Park:** Over 50 trees were planted at Hager in April and November. We met with the City and Anderson Elementary to discuss needed improvements at Hager Park. **Westbury Park:** Replaced trees that had died and continued to advocate for perimeter fencing and a trail. **Willow Waterhole:** The WCC continues to support activities at the Willow Waterhole.

**Security:** We added a 4th patrol deputy in 2014. We feel that adding an additional patrol officer has been an effective action, as crime in Westbury was down in 2014 compared to the previous year. Surrounding neighborhoods experienced an increase in break-ins; however, Westbury did not. We opted to hire a sergeant, rather than a patrol officer, to coordinate with the WCC Security Director to oversee the Westbury patrol program, plus do patrols. **Security outreach:** We held monthly Coffee with the Constable events to allow residents to visit and meet our deputies. We held a Cool Down with the Constables in the summer for parents and children to meet to discuss safety issues.

## Communications:

**The Westbury Crier:** Since July of 1956 the WCC has produced our monthly newsletter, *The Westbury Crier*. Its look and feel has benefitted by switching to a

new printing contractor with high quality paper with clear full color print. The Westbury High School Baseball Booster Club continues to do an awesome job with delivery. **Social media:** We gained over 400 more additional fans on Facebook and now have over 1200 fans. We kept our residents aware of issues relevant to Westbury through our website, Facebook, and the newsletter.

## Support for our Residents:

**We get calls and emails:** The WCC office handled thousands of calls and emails from residents and many problems were solved. We worked closely with the Mayor's Assistance Office and the District K office when issues were not resolved through 311. **White Elephant sale:** We held two successful Sales. **Trees:** We held our 6th annual Trick or Tree event and gave away 100 trees to residents. We started a tree farm at the WCG.

**Awards:** The Westbury Civic Club, the Friends of Chimney Rock Park, and Marcia Hartman for the Westbury Community Garden all received Certificates of Recognition at the Keep Houston Beautiful "Mayor's Proud Partner" award ceremony. WCC President Becky Edmondson was chosen as one of the "35 people who have changed Houston for the Better" at that ceremony.

**Esplanades:** The Westbury Civic Club was recently awarded a Neighborhood Matching Grant from the City for esplanade irrigation to be installed in 2015. New trees were planted and mulched on W. Bellfort. During the summer dry spells, landscape beds and young trees were regularly watered. Our landscaping contractor fertilized, mulched, and de-littered the esplanade beds on a regular basis, and also mowed and maintained the major intersection of W Bellfort and Chimney Rock. The contractor also mowed areas which do not get frequently mowed.

**Solid Waste:** After years of working with the Solid Waste Department, all homes in Westbury now have single stream recycling (big green rolling bin) and the same heavy trash day and regular collection day of the week. We work with this department when trash pickup is missed.

**Advocacy:** We strongly advocate on behalf of all of Westbury and have directors who serve on important boards such as the Westbury Community Garden,

the WAIC, the Westbury SuperNeighborhood, the Friends of Westbury High School Foundation, the Willow Waterhole Greenspace Conservancy, SWHouston 2000, the Brays Oaks Management District, the Brays Bayou Association, the Houston Clean City Commission, and the Super Neighborhood Alliance. We meet with city, county, state, and federal officials. We are working closely with HISD and our trustee, Wanda Adams, on the 2012 bond projects for Parker and WHS. We are working with TX Rep Borris Miles and our community partners to contest a pending Southern Crushed Concrete air permit. We successfully advocated STRONGLY on behalf of the Westbury Community garden.

**Administrative & Training:** Several directors attended "Neighborhood 101" training workshops sponsored by District K covering the following topics: Grant Writing; BARC; and Civic boards.

**Neighborhood Protection:** We met periodically with the city's Department of Neighborhoods to review outstanding 311 items and to track their progress. We worked with City Legal on cases where deed restrictions were being violated.

**Commercial Properties:** The WCC monitors the adjacent commercial properties and either works directly with the owners or through the city. Portions of Westbury Square were demolished this year and we continue to work with the City and the owner. We worked closely with Neighborhood protection to get the owner of the vacant property on West Bellfort delittered and mowed. We worked with the new owners of the Westbury Centerette property to keep it boarded up and maintained while in development.

## Infrastructure:

**Flooding:** We have been asking the Harris County Flood Control district to have the channels that run through Westbury desilted as flooding is unacceptable. Work to improve the flow on ALL the channels in Westbury will be done in 2015. **Sewers:** We reported sewer issues at the CIP meeting in February and ALL of the sewers in Westbury are being scoped and evaluated. **Streets:** Streets in Westbury 1 and 2 were overlaid. Repairs on others are in the queue. **Water line replacement:** Water lines were replaced in Westbury 5 and along Oasis to correct areas with many water main breaks.



# WCC Green Team At Work

## Trees Planted at Hager Park

Members of the Westbury Greenspace team led by Al Potvin and Bill and Karen Schubert planted 20 trees in Hager Park in early December 2014. Working alongside them were an enthusiastic group of students from YES Prep Northside, a charter school that encourage volunteer work as part of their student's educational experience.

All the new trees are mulched and staked to help protect them from the city mowers. The smaller trees that were planted earlier in the year were also staked for protection. Sadly, the red buds planted earlier this year were mowed down. Our rainy winter months should help establish these trees so that by spring time we will see them green and healthy.



## Support the WCC Green Team! Please pay your greenspace dues.

From maintaining esplanades, planting trees, watering, trimming trees, projects, partnering with the COH and much more, the work is never ending!

Thank you to our awesome volunteers!

**SEND IN YOUR 2015 DUES TODAY!**

See page 13 for dues form

## Westbury Receives City Matching Grant

In 2014, City Council approved a \$50,000 budget amendment to re-establish the City of Houston Neighborhood Matching Grant Program (NMGP). The Neighborhood Matching Grant Program helps neighborhoods fund various beautification and improvement projects by providing a dollar-for-dollar matching grant reimbursement ranging from \$500 to \$3,000.

The Westbury Civic Club successfully submitted a grant application prepared by the WCC Greenspace Committee to improve the intersection of Hillcroft and Willowbend by providing irrigation at the Westbury marker sign. Irrigation will provide more flexibility in plantings that will be successful throughout the year at that marker sign. The goal is to improve the appearance of that highly visible intersection.

The scope of work will include tunneling under Hillcroft to connect to a city water line that runs on the residential side of the street, since the city design code does not allow a connection to be made to the much larger line that runs down the middle of Hillcroft. The WCC will install and maintain the irrigation system. The WCC must also adopt that section of esplanade from the city and maintain it (mowing), in exchange for free city water for the irrigation system. Due to the number of applicants, the WCC will receive a grant of \$ 2,845 rather than the \$ 5,000 requested.

This will be the second esplanade in Westbury to have irrigation installed. A Neighborhood Matching Grant was awarded back in 2000 that added irrigation to the Chimney Rock and West Bellfort intersection.

**Westbury Volunteer Corp** Are you interested in getting more involved in your community? Do you need to fulfill volunteer hours for your school or Scout group? The WCC's Volunteer Corp needs you! Please email Stephanie Lester at westburystephanie@gmail.com to join this team of neighborhood volunteers. .



## See your child achieve MORE at

### St. Thomas More Parish School

5927 Wigton Dr.

Houston, Texas 77096

713.729.3434 [www.stthomasmore-school.org](http://www.stthomasmore-school.org)

Preschool Programs (3 & 4 year olds)  
Coeducational Classes (Grades 1 - 8)

All Day Kindergarten Program  
Before/After School Care Available

Give your child all the extras

Enriched Academics ❖ Strong Athletics ❖ Introduction to the Fine Arts

**LIMITED OPENINGS**

Call **NOW** to arrange a private tour of our campus - 713.729.3434



# Holiday Lights and Parade in Westbury



The  
Holiday's  
in  
Westbury



What a great parade! A big thanks goes to the Mandell family for all their hard work on the Deck the Halls Parade. WCC President, Becky Edmondson and WCC Director Cindy Chapman rode in the parade. There were hundreds of residents along the parade route!

December 2014

## "Holiday Yard of the Month Winners

### Parkwest 1

1606 Atwell - Maya and Jason Fredrickson

### Parkwest 2

5815 Hummingbird - Tiffany and Samuel Fisher

### Parkwest 3

6019 Cerritos - Daniel & Sheryl Namee

### Westbury 1

10910 Endicott - Rusty Grones

### Westbury 2

10814 Oasis - Westbury Resident

### Westbury 3

5727 Belrose - Rudy Elizondo & Jesus Mendoza

### Westbury 5

10723 Braewick - Douglas Stockman



## real estate market data FREE & CUSTOMIZED FOR YOU

Market Info | School Info | Community Info

Your Market 2012 at 1:37 PM

Average Days on Market Days on market <b>78</b> View 90-day trend	Selling vs Asking Prices Selling below asking price <b>-5%</b> View 90-day trend	Asking and Sold Prices Median sold price <b>\$189,500</b> View 90-day trend	Number of Homes for Sale Homes for sale decreased <b>-17%</b> View 90-day trend
----------------------------------------------------------------------------	-------------------------------------------------------------------------------------------	--------------------------------------------------------------------------------------	------------------------------------------------------------------------------------------

Have a Question? Get in touch, I'm happy to help. [Small me](#) or call 713-272-2000

Address	Price	Days on Market	Status
3784 Cerritos Dr 3 beds, 2 baths, 2012 sq. ft., View Details   Show On Map	\$249,000	88 days	SOLD
5788 Cerritos Dr 4 beds, 2 baths, 1918 sq. ft., View Details   Show On Map	\$266,200	31 days	SOLD
5987 Cerritos Dr 3 beds, 2 baths, 1929 sq. ft., View Details   Show On Map	\$110,000	216 days	SOLD
4440 8th St 4 beds, 2 baths, 1918 sq. ft., View Details   Show On Map	\$440,000	43 days	SOLD
4440 8th St 4 beds, 2 baths, 1918 sq. ft., View Details   Show On Map	\$440,000	43 days	SOLD
4440 8th St 4 beds, 2 baths, 1918 sq. ft., View Details   Show On Map	\$440,000	43 days	SOLD
4440 8th St 4 beds, 2 baths, 1918 sq. ft., View Details   Show On Map	\$440,000	43 days	SOLD
4440 8th St 4 beds, 2 baths, 1918 sq. ft., View Details   Show On Map	\$440,000	43 days	SOLD

FREE MARKET SNAPSHOT [www.brockandfoster.com](http://www.brockandfoster.com)

Find out what your home is worth, see what the house down the street just sold for and learn about neighborhood real estate trends. Visit [www.brockandfoster.com](http://www.brockandfoster.com) to access your FREE customized real estate data report.

Market Snapshot is brought to you by Brock & Foster. Susan Brock is a specialist in Westbury and the surrounding areas. With more than 12 years experience she offers an individualized experience that has earned her a five-star client experience rating. Susan is a licensed broker and REALTOR.®

**BROCK and FOSTER**  
Real Estate  
Greater Knowledge. Greater Results.



susan@brockandfoster.com office: 713-272-2000 cell/text: 713-922-0877



# Crime/Security

## Coffee With Constables – December 2014

We had a great turnout at the December Coffee with the Constables! The weather cleared just in time and neighbors enjoyed each conversation over coffee, donuts, fresh fruit & pastries. Our Constables visited with about 25 neighbors, answered questions and even brought toys for the kids. Board Members Virginia Livingston, Cindy Chapman, and Stephanie Lester attended. Thanks so much to Josh & Ashley Hope for hosting and to all the residents who came by! The next event will be Cocoa with the Constables on January 21 from 6PM to 7PM at Westbury Baptist Church.



**Make sure to call the Westbury Area Patrol Constables for Vacation Watch if you are going out of town for the holidays. You can fill out the form online or call 281-463-6666**

## Crime Statistics for Westbury Super Neighborhood 37\* 30 days December 17, 2014

	Single-Family Home	Apt/Condo	Commercial Property	Public Areas	Totals
<b>Burglary</b>	7	1	0	0	8
<b>Theft</b>	11	13	5	3	32
<b>Auto Theft</b>	2	4	0	0	6
<b>Robbery</b>	3	3	4	2	12
<b>Assault</b>	2	3	0	0	5
<b>Rape</b>	0	1	0	0	1
<b>Murder</b>	0	0	0	1	1
<b>TOTAL</b>	25	25	9	6	65

\*Area bounded by: S. Post Oak, US 90/S. Main, utility easement north of Willowbend and drainage bayou, west of Braewick

**Westbury Area Patrol Constables 281-463-6666**  
**Westbury HPD Storefront 713-726-7126**  
**HPD Non-Emergency 713-884-3131**

### Single Family Residential Crime Locations (30 days preceding 12/17/14)

Block #	Street	Crime	Block #	Street	Crime	Block #	Street	Crime
11900	Ashcroft	Burglary	5800	Ettrick	Theft	12300	Mullins	Theft
12400	Ashcroft	Auto Theft	5700	Fontenelle	Robbery	12300	Rampart	Robbery
10700	Atwell	Burglary	10900	Hillcroft	Burglary	5400	Spellman	Theft
12000	Atwell	Theft	5200	Hummingbird	Assault	5200	W. Bellfort	Burglary
11500	Braewick	Theft	6000	Ludington	Burglary	5500	W. Bellfort	Burglary
12300	Braewick	Theft	10800	McClearn	Theft	5400	Willowbend	Theft
6000	Densmore	Theft	5900	McKnight	Theft	5700	Willowbend	Assault
6000	Dryad	Burglary	10600	Moonlight	Theft			
5800	Duxbury	Auto Theft	11900	Mullins	Robbery			



Salem Evangelical Lutheran Church (across from Kroger) will be 60 in February. The congregation will celebrate with a neighborhood "Food Truck Saturday" birthday party on Saturday, Feb. 21, noon - 4 p.m. Some of Houston's best food trucks – including Chi Lantro, The Golden Grill and Porch Swing Desserts – are coming! There will also be a Kidz' Zone with activities for children. **SAVE THE DATE!** The community is welcome!



# Dues and Assessments 2015

The dues are \$295 a year or just \$25 a month. What does that \$25 a month accomplish?

- 1) **Protects your investment in your home by keeping Westbury a strong and vibrant neighborhood.**
- 2) **Keeps the doors to your Civic Club office open and staffed.** The WCC has an office with records and historical data dating back to 1956. The Westbury Crier has been bringing news to your doorstep EVERY month since 1956. Right now the WCC has one employee. As an example Meyerland, with half the homes, has 3 employees and they outsource their quarterly publication. We would love to see enough participation to hire another employee. The office provides free notary service to members and works as a liaison for residents on issues with the city.
- 3) **Protects your home and family with the Westbury Area Patrol through Constable Precinct 5.** We currently have 4 deputies. We need YOUR participation to be able to fund this 4th deputy.
- 4) **Improves the looks of our esplanades, parks and green spaces.** The WCC has planted hundreds of trees and given away thousands more. We have a contract with a landscape service that mows the areas that the City or TxDot or others do not mow in public right of ways.
- 5) **Advocates for City services and infrastructure improvements**
- 6) **Enforces deed restrictions**
- 7) **Hosts two White Elephant Community Garage Sale events each year!** This is the most popular event we host each year!

**At \$25 a month, this membership is a bargain and a great way for you to invest in the neighborhood. Won't you join us in making Westbury the very best neighborhood it can be?**

## Dues & Assessments

Most residents of Parkwest 1 and Parkwest 2 have mandatory assessments, which are due by February 1. Bills for mandatory assessments have been mailed. If you have not received your mandatory assessment bill, please email or phone the WCC office. Also, please contact the WCC office if you need to set up a payment plan schedule to pay your mandatory assessments.

If you are a homeowner or a renter who does not have mandatory assessments, your payments to the WCC are VITAL to continuing the services and quality of life that you enjoy as a Westbury resident. Westbury homes continue to appreciate in value because the Westbury community is a popular and well-regarded place to live. We did NOT raise sufficient funds in 2014 to pay for the full cost of our security patrol program. We added a 4th patrol officer last year, which has been good for our residents. However, this year it is vitally important to raise enough money to pay the full cost of 2015 and to maintain our security reserve funding. We also need to have funds to pay for our operational costs (office rent, utilities, printing, etc.) and pay a part-time employee. We hope to add another part-time employee in 2015 as part of our continued efforts to provide the best service possible for our residents. Since we also all want our community to look nice, your contributions to the Green-space Beautification funds are used to trim trees, water our landscaping plants, and other efforts to keep our public streets and parks attractive and well-maintained. If any of you have been house hunting in other areas of Houston, then you are aware that our suggested contribution amounts are reasonable and fair compared to other subdivisions across Houston.

**SEND IN YOUR DUES TODAY!**

## JACKIE ZEHL & TERESA LEWIS

### A HISTORY OF EXCEPTIONAL REAL ESTATE SERVICE



5839 YARWELL 4/2.5/2  
MAPLEWOOD SOUTH \$519,900



5710 CREEKBEND 3/2/2  
PARKWEST \$409,000



11531 GAYMOOR 3/2/2  
WESTBURY \$299,900



6127 DUMFRIES 4/2/2  
MAPLEWOOD SOUTH \$299,000



5815 DRYAD 3/2/2  
WESTBURY \$292,750



5519 ETRICK 3/2/1  
WESTBURY \$264,900



10902 ASHCROFT 3/2/2  
PARKWEST **SALE PENDING**



5738 CLARIDGE  
PARKWEST **COMING SOON**

### JUST SOLD

5506 BIRDWOOD  
5127 JACKWOOD  
5907 KULDELL  
4314 McDERMED  
5603 STILLBROOKE  
6139 QUEENSLOCH



713.349.7221 | JZEHL@CBUNITED.COM 713.349.7227 | TLEWIS.HOUSTON@ATT.NET  
5111 BELLAIRE BLVD. BELLAIRE, TEXAS 77401 | FACEBOOK.COM/JACKIEZEHL.TERESALEWIS

# 2015 Dues/Assessments

**ATTENTION:  
PARKWEST  
1&2**

Homes purchased in Parkwest 1 after Jan. 1, 1993 and Parkwest 2 after Jan 1, 1994 have mandatory assessments.

**The amount of the 2015 Mandatory Assessments is \$230.**

**The 2015 Mandatory Assessments are due by February 1, 2015.**

Invoices have been sent out.

If you have any questions or did not get your invoice, please contact the WCC office at 713-723-5437 or email westburycc@sbcglobal.net

**Why do my dues go to Dallas?**

**Is this correct?** Yes, this is correct! We have you mail your payments directly to our Bank processing center. This allows your payments to be processed immediately and saves our office manager hours of work.

**Mission of the WCC**

*The purposes of the Westbury Civic Club, Inc. (the "Club") are to improve the appearance of the Westbury area and promote the civic, cultural educational, health, and general welfare of the residents of the Westbury and Parkwest subdivisions in Harris County, Texas (collectively, the "Community").*

2015 Westbury Civic Club Dues		*Please send this form in with your payment																													
Name(s) _____																															
Address _____																															
Home Phone _____	Work _____	Cell _____																													
E-mail _____																															
<p><b>Make checks payable to: Westbury Civic Club, Inc.</b>  <b>Mail to:</b>                      P.O. Box 975182                      Dallas, TX 75397-5182</p> <p><b>Online payment:</b>                      paypal.com—Send Money to westburycc@sbcglobal.net                      Make sure to include your address or account number</p>	<table style="width: 100%; border-collapse: collapse;"> <tr> <td style="width: 70%;">Westbury Civic Club Membership</td> <td style="width: 10%; text-align: right;">\$40</td> <td style="width: 20%; text-align: center;">\$</td> </tr> <tr> <td>Greenspace Beautification</td> <td style="text-align: right;">\$25</td> <td style="text-align: center;">\$</td> </tr> <tr> <td>Westbury Area Patrol</td> <td style="text-align: right;">\$230</td> <td style="text-align: center;">\$</td> </tr> <tr> <td style="text-align: right;"><b>Subtotal</b></td> <td style="text-align: right;"><b>\$295</b></td> <td style="text-align: center;"><b>\$</b></td> </tr> <tr> <td colspan="3"><b>Additional Contributions:</b></td> </tr> <tr> <td>Westbury Civic Club</td> <td></td> <td style="text-align: center;">\$</td> </tr> <tr> <td>Greenspace Beautification</td> <td></td> <td style="text-align: center;">\$</td> </tr> <tr> <td>Westbury Area Patrol</td> <td></td> <td style="text-align: center;">\$</td> </tr> <tr> <td>Westbury HPD Storefront</td> <td></td> <td style="text-align: center;">\$</td> </tr> <tr> <td style="text-align: right;"><b>Total</b></td> <td></td> <td style="text-align: center;"><b>\$</b></td> </tr> </table>	Westbury Civic Club Membership	\$40	\$	Greenspace Beautification	\$25	\$	Westbury Area Patrol	\$230	\$	<b>Subtotal</b>	<b>\$295</b>	<b>\$</b>	<b>Additional Contributions:</b>			Westbury Civic Club		\$	Greenspace Beautification		\$	Westbury Area Patrol		\$	Westbury HPD Storefront		\$	<b>Total</b>		<b>\$</b>
Westbury Civic Club Membership	\$40	\$																													
Greenspace Beautification	\$25	\$																													
Westbury Area Patrol	\$230	\$																													
<b>Subtotal</b>	<b>\$295</b>	<b>\$</b>																													
<b>Additional Contributions:</b>																															
Westbury Civic Club		\$																													
Greenspace Beautification		\$																													
Westbury Area Patrol		\$																													
Westbury HPD Storefront		\$																													
<b>Total</b>		<b>\$</b>																													
<p>Sending multiple payments?                      Circle your payment choice                      2 payment of \$147.50                      3 payments of 98.34</p> <p><b>**Call the office for more payment options or questions</b></p>																															

<p><b>Water Heaters:</b>                      Regular &amp; Tankless                      Disposals                      Water Lines                      Gas Lines                      Drain Cleaning                      Under Slab Repairs                      Re-route kitchen &amp; laundry pipes</p>	<h2 style="margin: 0;">ASTRO PLUMBING</h2> <p style="margin: 0;"><b>Full Service Plumbing and Repair Specialist</b></p> <h3 style="margin: 0;">713-256-0017</h3> <p style="margin: 0;">★ <b>JOHNNY LEWIS</b> ★</p> <p style="margin: 0;"><b>WESTBURY RESIDENT</b></p>	<p><b>New Sewer Lines</b>                      Hydrostatic Testing                      Remodeling &amp; Repairs                      Sinks                      Faucets                      New Drains under</p>
<p>M16312 ★ Since 1985</p>	<p>★ Senior Discounts</p>	<p>★ All Major Credit Cards</p>
<p>★ Fully Insured</p>		



Are you looking for a reliable dog walker or pet sitter for while you are at work or on vacation??

## Boon Pet Care

is here for you!

As Westbury residents, we are committed to taking the very best care of our neighbors' loved ones.

Check out our website for pricing and details: [www.booncare.com](http://www.booncare.com)  
 Or contact us today: [booncare@gmail.com](mailto:booncare@gmail.com) or 713.936.2623



Wondering what your  
property is worth in  
today's market?

Call **Larry Mercer** now  
for a  
**FREE MARKET ANALYSIS!**

**713-826-7274**

Make Larry's 36 years of  
experience work for you.



**RE/MAX** Metro

2626 Richmond Ave

Houston, TX 77098

LARRY MERCER, BROKER

EMAIL: [TheMercerTeam@yahoo.com](mailto:TheMercerTeam@yahoo.com)

[www.larrymercer.com](http://www.larrymercer.com)



# 2015 Budget \*Approved by the WCC Board on 11/19/14

## WCC General Operation/Programs 2015

General Income	Dollars
Transfer + Refinance Fees	32,000
Advertising— Crier	50,000
Interest Income	300
Mandatory Membership	16,000
Non-Mandatory Membership	43,000
Donations—Civic Club	1,500
Community Garage Sale	2,000
<b>Total General Income</b>	<b>144,800</b>

## Expenses –Administrative Dollars

Insurance	6,600
Rent— Office	8,880
Telephone & Internet	1,500
Electricity	1,000
Salaries & Wages	42,500
Payroll Tax Expense	3,500
Taxes Personal Property	390
Banking & Paypal Fees	3,800
Equip. Maintenance & Repairs	100
Training/Meetings—Directors or Staff	2,000
Website— Maintenance & Hosting	1,000
Computer Hardware/Software	5,500
Postage—Regular	1,000
Office Supplies/Equipment	3,180
Professional/Contract Services	4,850
<b>Total Expenses (Admin)</b>	<b>85,800</b>

## Expenses—General Programs Dollars

Programs/Hospitality/Events	2,000
Deed Restriction Revision Project	5,000
Deed Restriction Enforcement	2,500
Crier— Prepare, print, distribute	40,000
Membership— Brochures/Envelopes	3,500
Community Garage Sale Expenses	2,000
Contributions to External Orgs.	3,500
Yard of the Month Program	500
<b>Total Expenses (General)</b>	<b>59,000</b>

**Total Admin & General Expenses 144,800**

## WCC Programs with Restricted Funds 2015

### WAP Constable Patrol -Restricted Funds

WAP Income	Budget
Mandatory Assessments	64,000
Voluntary Dues	242,925
Donations to WAP	10,000
<b>Total WAP Income</b>	<b>316,925</b>

### WAP Expenses

Harris County Constable	316,925
<b>Total WAP Expenses</b>	<b>316,925</b>

### Greenspace Beautification— Restricted Funds

Greenspace Income	Budget
Mandatory Assessment	11,000
Voluntary Dues	25,000
Donations to Greenspace	1,600
Other (Grants)	5,000
Garden/Holiday Tours	1,000
<b>Total Greenspace Income</b>	<b>43,600</b>

### Greenspace Expenses

Monthly Maintenance	25,000
Water and Watering	5,000
Supplies & Plants	3,500
Other Services & Equipment	100
Special Projects	10,000
<b>Total Greenspace Expenses</b>	<b>43,600</b>

## 2015 WCC Budget Highlights

- Income from *The Crier* will offset the expenses of the *Crier*
- Income from Community Garage Sales will offset expenses
- Enforcement of Codes/Covenants/Restrictions – includes a new tablet and a mobile app, compatible for use with our property management software and also to document problems sent to the city for resolution
- Increase payroll expenses to improve services
- Additional costs for security patrols— increase in 2015
- Beautification “Special Projects”— esplanade tree trimming and additional planting & cleanups



**Auto-Home-Life-Renters-Condo-Boat-Flood**  
**Motorcycle-Business-Commercial Auto**  
*I have access to five home insurance providers*

**Peter Zografos Agent**  
**5322 W. Bellfort #206**  
**(713)-877-8811**

[pzografos@farmersagent.com](mailto:pzografos@farmersagent.com)  
[www.farmersagent.com/pzografos](http://www.farmersagent.com/pzografos)



**PROTECT WHAT MATTERS MOST,  
YOUR HOME & FAMILY FOR FREE**

**SAVE UP TO \$250\***

Stay connected with your home!

- ✓ Home Automation
- ✓ Climate & Light Control
- ✓ Remote Video Monitoring

Adrianna Clasen  
**713.202.7353**

**ADT** Secure your home and business with the new ADT Pulse system savings up to \$250

Save up to 20% off your homeowner's insurance

# Neighborhood News

## Volunteer Appreciation Breakfast

One of our community partners, SWHouston2000, holds periodic breakfast events to honor volunteers and to provide interesting topics of interest for this area of town. The December breakfast by SWHouston2000 and the Brays Oaks Management District honored local volunteers. A room full of volunteers was honored, including these volunteers from the Westbury and Maplewood area in the photo.



Front Row: Becky Edmondson , Eugene Sirls , Karen Schubert , Lucy McClauglin, Ren Mitchell , Bob Schwartz .  
 Back Row: Cindy Chapman, Bill Schubert, Russell Schexnayder, Ralph Rieger, Virgil Fisher, Howard Sacks

### SW2000 January Bi-Monthly Breakfast "Seeking Signature Park Status for Willow Waterhole"

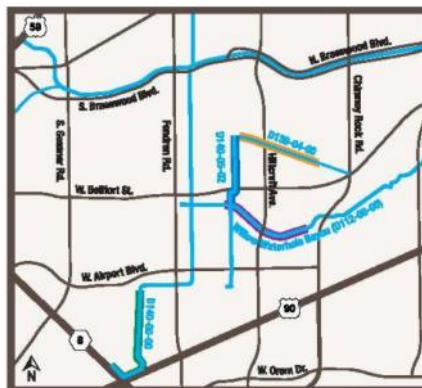
Creating more signature parks is a key goal for HPARD. Come hear Howard Sacks speak about Willow Waterhole's potential as a signature park on Tuesday, January 13 at the Bi-Monthly Breakfast hosted by SWHouston2000. For more information , go to <https://www.facebook.com/SWHouston2000> or <http://www.swhouston2000.org>

## Harris County Flood Control Update

According to the Harris County Flood Control District, work to remove sediment and debris, and repair erosion and outfall pipes on three Brays Bayou tributaries in Westbury will finally start soon.

### The three channels in our area that will be repaired are:

1. The section of HCFC Unit D112-00-00 also known as Willow Waterhole Bayou, between Landsdowne and Braewick.
2. The section of HCFC Unit D139-04-00, from Atwell to Braewick.
3. The section of HCFC Unit D140-05-02, from Willowbend to Braewick



The contractor will use heavy construction equipment to perform the work, and access to the work area will be via public right of way, unless the contractor obtains other access agreements. The Flood Control appreciates patience and understanding through the duration of this project.

The contractor for the maintenance repair work is Salem Group, Inc., D.B.A. Complete Concrete. Work is scheduled to start/mobilize on December 29, 2014. The work is projected to last 170 working days. The cost of the contract is \$435,825. HCFC Project ID # Z100-00-00-X170.

To comment or ask a question on project activities, call HCFC's Project and Study Information Line at 713-684-4040 or email [ProjectCommunications@hcfcd.org](mailto:ProjectCommunications@hcfcd.org)



**Phyllis Berenberg**  
 MS, CCC-SLP  
 Speech-Language Pathologist

[Phyllis.berenberg@pbspeechtherapy.com](mailto:Phyllis.berenberg@pbspeechtherapy.com)

3033 Chimney Rock Road  
 Suite 400  
 Houston, TX 77056  
 T 713.781.9191  
 F 713.781.6114  
[pbspeechtherapy.com](http://pbspeechtherapy.com)



YOUR LOCAL ROOFER SERVING WESTBURY SINCE 2006.

## Vonnie Cobb Realtors, Inc.



*Your  
 Neighborhood  
 Realtor for  
 40 Years!*

Family owned and operated.  
 Pictured Vonnie Cobb and  
 Shannon Cobb.

**Call us today for your  
 FREE Market Analysis!  
 713.664.1818**



*Professionalism with a Personal Touch*

[www.VonnieCobbRealtors.com](http://www.VonnieCobbRealtors.com) • 4842 Beechnut • Houston, Texas 77096



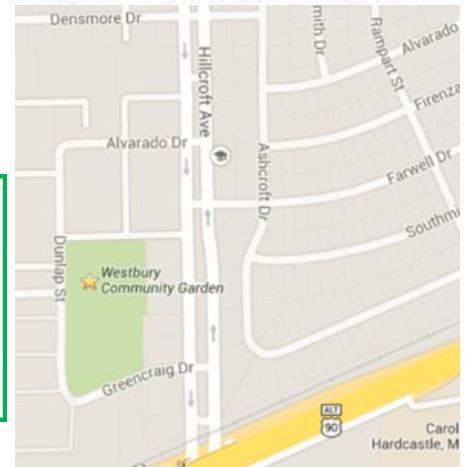
# Gardening News

## Urban Harvest Fruit Tree Sale

Make a trip to the 15th Annual Urban Harvest fruit tree sale in January and purchase fruit trees for your own yard. Once again, there will be thousands of fruit trees of all kinds, each carefully selected to be appropriate for our climate. Westbury is an ideal community in which to grow fruit trees. Check [www.urbanharvest.org](http://www.urbanharvest.org) to see the fruit tree types and prices.



**Date:** Saturday, January 17  
**Time:** 9AM to 1PM or until sold out  
**Location:** Rice University, Greenbriar Lot, 5600 Greenbriar



## Farm Stand at the Westbury Community Garden

A farm stand run by Plant It Forward Farms is open at the garden

**Saturdays from 9AM to 5PM**

**Sundays 10AM to 6PM.**

A farm share program is also available with pick up at the Garden. Visit [www.plant-it-forward.org](http://www.plant-it-forward.org) for info.



Commercial ♦ Residential ♦ Auto Glass

## DISTINCTIVE GLASS

**Phone:** (713)981-0200 9541 Town Park Dr.  
**Fax:** (713)981-4193 Houston, TX 77036  
**Email:** [dist@clear.net](mailto:dist@clear.net) [www.distinctiveglassonline.com](http://www.distinctiveglassonline.com)

## Urban Harvest Farmer's Markets

**Wed. 11AM-1:30PM:**  
City Hall Farmer's Market, 901 Bagby

**Sat. 8AM-Noon:**  
Eastside Farmer's Market, 3100 Richmond

**Sun. 10AM-1PM:**  
Highland Village, 2720 Suffolk Dr.

## WHERE IS THE GARDEN?

12581 Dunlap (77035) is off Hillcroft between W. Airport and South Main. Heading south on Hillcroft, turn right onto Green Craig, follow it around the bend where it turns into Dunlap. The large blue roof on the WCG Pavilion is readily visible. Street parking.



Dr. Aileen Wang, DDS, MSD  
 Board Certified Orthodontist  
*Braces-Clear Braces-Invisalign*  
 Located in Meyer Park Shopping Center  
 Most Insurances accepted

713-721-2426  
 4770 W Bellfort St.  
 Houston, TX 77035

*Special Promotion!*  
 Get \$300 off full treatment  
 (with this ad)

*Wang Smiles Orthodontics*



Jon Lohman  
 5322 W. Bellfort, Ste. 111  
 (W. Bellfort @ Chimney Rock)

## LOHMAN LAW FIRM, PLLC

General Practice & Family Law  
 Wills and Supporting Documents, Trusts,  
 Estate Administration, Probate;  
 Divorce, Child Support, Family Rights;  
 Collaborative Law & Mediation;  
 Civil/Criminal Representation;  
 Maritime Investigations/Consultant

**Free 30-Minute Consultation**

[www.lohmanfirm.com](http://www.lohmanfirm.com)

**713-714-4601**



# Plumbco 713-725-5025

MPL 36609

*For all your plumbing installations and repairs.*

**Gary Bloch • [www.PlumbcoHouston.com](http://www.PlumbcoHouston.com)**



# Parker Elementary: New Building Update

## Parker Elementary: New Building Update

The 2<sup>nd</sup> community meeting for the Parker Elementary rebuild was held on Dec. 15. As a part of the 2012 HISD Bond, Parker was allocated \$29,485,000 for a new school to house 850 students. Their goal is to create lifelong learners and prepare students for middle school. Christian Sheridan, project manager, for Brave architects, opened the meeting to review the project scope and design process. He explained the process from meeting with students and hosting a design charette followed by a year of meetings with the project advisory team (PAT). A group of teachers, parents, administrators and community members met monthly to discuss the project. As an example of input from the PAT meetings was the addition of a landscape buffer between

the park and the bus lane which necessitated moving the building back about 25 feet.

Conceptual design plans were presented as were the floor plans for the new two story building. A performance hall to accommodate 500 persons is a highlight of the new school and will make Parker unique among elementary schools.

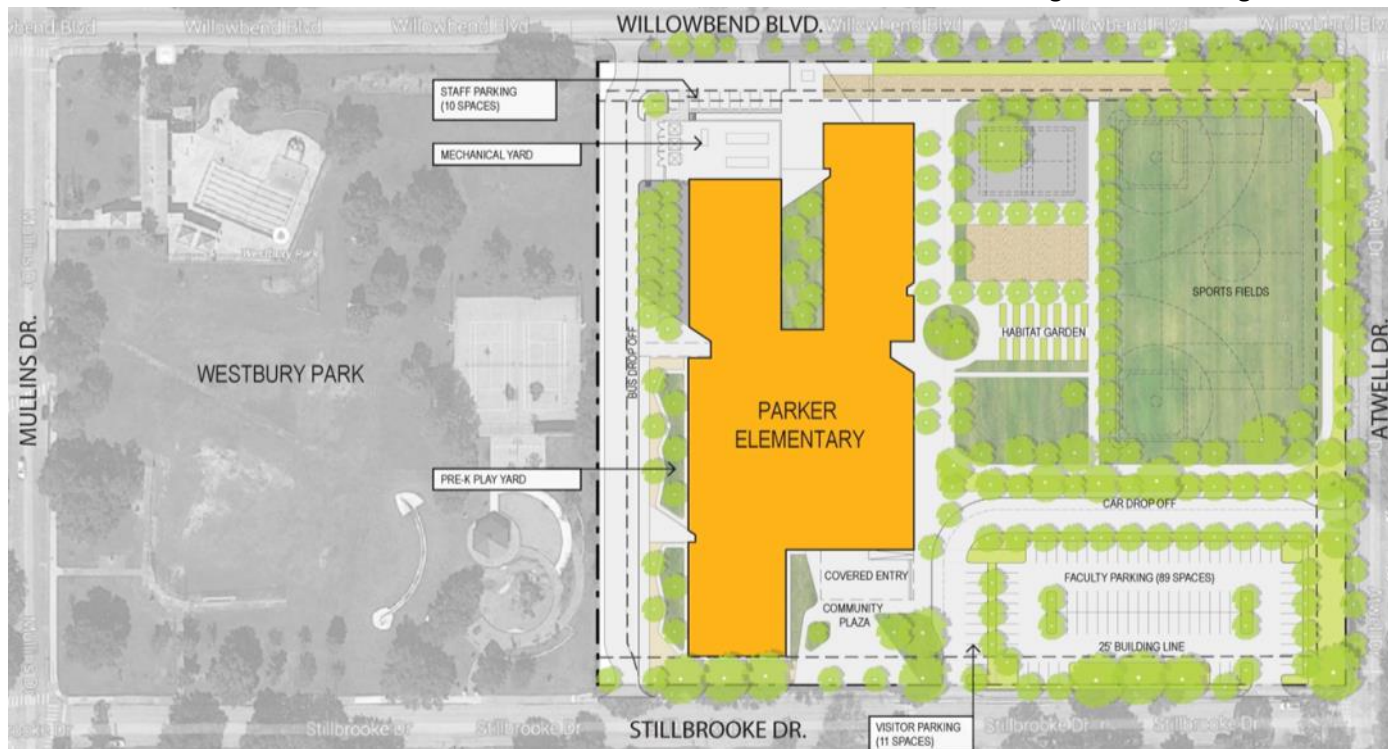
Other features included a community courtyard, community meeting space, a new orientation with the entry on Stillbrooke, rather than Atwell, a student courtyard, and a grand stairway.

Construction is set to begin mid to late 2015 and is expected to take 18 months.



Site Plan and Front Building Design

Please note: These are not final drawings and can change.



### ALL TYPES IRRIGATION, INC.

OVER 30 YEARS EXPERIENCE  
Design • Drainage • Installation • Service  
Commercial • Residential

**Emil Becker**  
T.I.L. #4415  
D.L. #126891

Office: (713) 726-1636  
Fax: (713) 726-8322  
Cell: (713) 819-2872

**Hunter Preferred Contractor**

“Take an Hour of Your Time  
to Change Your Life!”

Every  
Tuesday  
Night  
@ 7PM

RSVP:  
713 728 2300  
Careers@waynemurray.net

Ask about  
our next  
career  
night  
webinar!

Wayne Murray Properties

Each Location Independently  
Owned and Operated

# Westbury Area News

## WHS WinterFest

Westbury High School hosted its first Winter Festival on the school campus on Saturday, December 13. We hope that this fun, family-friendly event becomes an annual tradition at WHS. Activities for children included a bounce house, a petting zoo, face painting, and games. Live performances contributed to the festive atmosphere. Good food of all types abounded, because the WHS clubs and organizations sold a wide range of treats and lunch options. The school Husky mascot was sighted with a festive cap on his head as he greeted guests. Some of the biggest smiles were observed by kids bravely reaching out to touch and then hold a rabbit at the petting zoo.



## NEXTDOR.COM Policy

Please remember that the Westbury Civic Club does NOT monitor Nextdoor.com nor can it receive or respond to messages from extdoor.com. Please report all problems, questions or concerns directly to the Civic Club. The WCC can be reached at westburycc@sbcglobal.net, on Facebook (Westbury Houston), or at 713-723-5437. The Office is located at 5322 W. Bellfort 107.

## Westbury Meet & Eat

Come out to Teotihuacan Mexican Restaurant at 6579 W. Bellfort every 1st Thursday of the month to meet Westbury residents. This event is open to anyone who lives in Westbury.  
 January Meet & Eat: Thurs., Jan. 8 @ 6PM  
 February Meet & Eat: Thurs., Feb., 5 @ 6PM

## Westbury Trading Group - Facebook

The Westbury/Meyerland/Bellaire Trading Group is a Facebook group that has over 3,000 members. It allows area residents to sell, trade, or buy items from other area residents.

## Volunteers Needed—Foerster

Volunteers needed to read with children at Foerster Elementary at 14200 Fondmeadow. There are 40 children who need reading support and only 7 volunteers. Sign up at [www.connect4literacy.org](http://www.connect4literacy.org) to be a "Mentor in Person". Volunteer time is approximately 30 mins per student each week using activity kits produced by Children's Museum

**BOOK  
YOUR TIME  
ONLINE**



## Scheduling your next appointment just got simpler.

Memorial Hermann's online scheduling tool, ScheduleNow, lets you schedule and confirm your appointment with just a few clicks. Visit our website to choose the best time and reserve your spot today at the Memorial Hermann location near you.



PCPs • SPECIALISTS • MAMMOGRAMS  
 COLONOSCOPIES • PHYSICAL THERAPY • ERS

[memorialhermann.org](http://memorialhermann.org)



ADVANCING HEALTH



# Willow Waterhole Events and Updates

## Willow Waterhole Work Days

On the morning of Saturday, December 13, Westbury Christian Middle and High School students spread 10 cubic yards of mulch around trees at the Willow Waterhole Park along Gasmer Road across from Shell. The students were supervised by Coach Kenneth Okwuonu and they also picked up 10 bags of trash along the park boundary. Thanks to these hard working students shown below.

Each 2<sup>nd</sup> Saturday of the month students from area schools have been helping Bill Burhans and Russell Schexnayder on landscaping and cleanup projects at the Park. The next workday is planned for Saturday, **January 10, 2015**. If you are interested in joining this effort, please meet at The Gathering Place at 5310 S. Willow at 9AM.



**Audubon Bird Survey  
Saturday, January 17, 8AM**

**WWW.WILLOWWATERHOLE.ORG**

## Holiday Music in the Park

An afternoon of inspiration and overall merriment was provided by local church choirs and singing groups at the "Annual Holiday Music in the Park" held on Sunday, December 7, at the South Gazebo of Willow Waterhole. Grizzaffi Coffee Catering provided refreshments for purchase (hot chocolate, hot cider, coffee, cappuccino, pumpkin latte, and more).



The featured performers were Brentwood Baptist Church Children's Choir, Westbury High School Jazz Band, Westbury High School Choir, Westbury Christian School Choir, and Greater St. Matthew's Baptist Choir.



**Do you bake?**

*Cake decorating, cookie & candy making supplies  
Your Neighbor Since 1982*

**6218 Evergreen St. @ Hillcroft 77081**

713-777-1871 [www.makeacake.com](http://www.makeacake.com)

WHEN YOU WANT THE JOB DONE RIGHT THE FIRST TIME!

Since 1975

American SERVICES

WWW.ASAMERICAN.COM

Leak Detection Experts

Call Now:  
713-782-2989

Hello My Name is  
**ROBERT**

FOUNDATION REPAIR

- ❖ Exclusive Ameri-Link System
- ❖ Lifetime Transferable Warranty
- ❖ FHA/VA Approved
- ❖ Licensed & Fully Insured
- ❖ Warranties Available on Existing Piers

PLUMBING SPECIALIST

- ❖ City Permits & Inspections
- ❖ Hydrostatic Testing
- ❖ Sewer Reroutes
- ❖ Tunneling Experts
- ❖ Leak Detections
- ❖ Gas Leaks & Repair

American SERVICES

SAVE \$100.<sup>00</sup> OR 5% OFF  
ANY FOUNDATION REPAIR  
OR CONCRETE WORK

NOT VALID WITH ANY OTHER OFFER  
NEW CUSTOMER ONLY

PRESENT AT TIME OF SERVICE

Gold Star Member  
MPL - 15997  
BLUEPRINTS & DESIGN

American SERVICES

SAVE \$50.<sup>00</sup> OR 5% OFF  
ANY PLUMBING REPAIR

Call Today (713) 782-2989

NOT VALID WITH ANY OTHER OFFER  
NEW CUSTOMER ONLY

PRESENT AT TIME OF SERVICE

"CALL TODAY SO I CAN GIVE YOU  
AN HONEST FREE ESTIMATE"

CONCRETE WORK Driveways, Patios, Etc....

# Westbury Area Schools

## Fondren MS Student Wins City of Houston Citizenship Poetry Contest

Fondren Middle School student, Daniela Fuentes, from El Salvador, won first place in the City of Houston's Citizenship Month Poetry Competition. Citizenship Month was established by the City of Houston six years ago to celebrate the city's vibrant mix of people from all over the world. Fuentes read her poem aloud to hundreds of distinguished guests before it was placed on display at the University of Houston-Downtown library. Fellow classmate Fati Bouraima, a seventh-grader from Benin, Africa, received honorable mention for her poem.



## Westbury Christian School Celebrates 40 Years



On Saturday, February 7, 2015, from 3-6PM, at its main campus located at 10420 Hillcroft, Westbury Christian School will celebrate 40 years of offering a three-dimensional college-preparatory education -- challenging academics, vibrant spiritual life and comprehensive student activities -- to students from pre-school through 12th grade.

Festivities will include demonstrations of current student activities, school tours, Q&A with current and former heads of school, as well as sliders, refreshments and birthday cake. Tickets are \$25 per person, and children 6 and under are free. For more information, call Janice Pearson at 713-551-8100.



**3 Dimensions. 40 Years.  
1 Eternally Significant Goal.**

## New Head of School for Westbury Christian School

The board of trustees of Westbury Christian School has voted unanimously to name Michael D. White the new head of school. White – who has advanced through roles as a teacher, counselor and administrator since first coming to WCS in 1997 – has been serving as interim head of school since June 2014, while the board considered candidates to replace former Head of School Greg Glenn.

“Mike White is the right fit for WCS because he exhibits a strong personal faith and a dedication to both the mission of the school and kingdom education in general,” said Rosemary Martin, president of the WCS board of trustees. “His character, integrity and humble leadership qualities have already benefited the school in so many ways, and the board looks forward to partnering with Mike and his administrative team as we move forward with our strategic vision for the future of WCS.”

In addition to his 17 years of service to WCS, White is a deacon at the adjacent Westbury Church of Christ, where he leads singing, teaches Bible classes, and works with the youth and children's ministries. He and his wife Jennifer, the lower school principal at WCS, are also active parents of two Wildcats of their own. The Whites moved to Westbury in 2014.



## \*WE ARE IN YOUR NEIGHBORHOOD\*

We live and work in the neighborhood!



**5419 Cheena**  
\$413,000



**JACKIE MURRAY**  
Cell: (713) 825-9179  
jackiem@waynemurray.net



Wayne Murray Properties



**KENDYL MAURER**  
Cell: (281) 904-8199  
kendylm@waynemurray.net

**Area Residents  
& Neighborhood  
Specialists**



**5431 Willowbend**  
\$319,900



**12432 Renwick**  
Another One Sold!!



**11607 Ashcroft**  
\$300,000

**“We sell more, because we do more.”**

Over 38 Years of Experience!! Call for more information.



**6122 Queensloch**  
Another One Sold!!



**5655 Valkeith**  
\$414,900



**Your Home Could Be Here!!**



**6234 Cheena**  
\$346,500

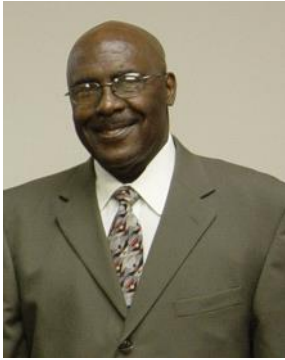


**5827 Burlinghall**  
\$337,500



# Tommie Lee Allen, Jr. 1936-2014

## A Tribute to Tommie Lee Allen, Jr. 1936-2014.



Tommie Allen was a long-time Westbury resident, volunteer, and community advocate. Tommie served as Vice-President of the WCC with three different Presidents. He was a valued member of the WCC Board for his practical advice, good listening skills, and friendship. Tommie departed this life on November 25, 2014.

Tommie had owned or managed several businesses over the years, but he devoted much of his life to public service, education, and serving the community. He served in the US Army and was honorably discharged. Upon completing his service, he graduated from Prairie View A&M and

taught for several years at the high school and college level. In 1965 he was the third black person hired by the state of Texas as a Texas State Parole Officer. He earned a Master of Education degree in Guidance Counseling from Prairie View A&M and worked for the State of Texas Rehabilitation Commission and then with students at TSU (Associate Dean), the University of Houston (counselor & Program Director), and California State University – Los Angeles (Program Director). Tommie then relocated back to Houston and worked for the State of Texas. He retired as a Supervisor with the Texas Department of Criminal Justice, Parole Division where he made many lasting friendships.

His compassion for all people and desire to give back to his community was felt in Los Angeles, where he served as Chairman of the Board of the Marcus Garvey Schools, in Houston as Vice-President of the Westbury Civic Club, and in his hometown of Valley Mills, where he chronicled family history and was honorary chairperson of the Rock Springs Cumberland Presbyterian Church Committee.

His family notes "His life was a Blessing" and "His memory is a Treasure." He leaves behind his beloved wife Angela, sons Tommie Allen III and Christopher H. Jackson, and many other relatives and friends.

## Commercial Property Updates

### "Westbury Centerette"

We have limited information about the next steps for the vacant "Westbury Centerette" property since the information printed in the November Crier. The property owner plans to build a 2-story facility, which would be designed for and leased to LA Fitness. Now that a variance request has been approved by the City Planning Commission, it is our understanding that the next step is the relocation of utilities in the middle of the property.

### Westbury Square

We don't have any new information about Westbury Square.

### Braes Interfaith ReSale Shop ReOpening

Braes Interfaith Ministries (BIM) will be re-opening their popular resale shop in a new location on S. Post Oak, near the Foodarama grocery store at Willowbend in January 2015.

### New McDonald's

Construction is in progress for a new McDonald's fast food restaurant located on S. Post Oak, on the northbound feeder road near West Bellfort.

## Links for Lost & Found Pets

- ☑ Nextdoor Westbury - [www.nextdoor.com](http://www.nextdoor.com)
- ☑ Westbury Lost and Found Pets Facebook - <https://www.facebook.com/westburyhoustontexas>
- ☑ CARE- Contact at [westburycare@gmail.com](mailto:westburycare@gmail.com) (Compassionate Animal Rescue Efforts is located in Westbury) or go to [www.westburycare.com](http://www.westburycare.com)

# SPREAD HAPPINESS, NOT GERMS.

## Hurt? Sick?

Next stop:

**nextlevel**  
URGENT CARE  
nextlevelurgentcare.com

Meyerland, 4936 Beechnut, Houston, TX 77096 713.893.1223

The cost-effective alternative to the ER.

Average wait is just 5 minutes • Easy check-in • Open 9am-9pm, 7 days a week

# Southern Crushed Concrete

## Pending Environmental Permit Application

Southern Crushed Concrete (SSC) has applied to the Texas Commission on Environmental Quality (TCEQ) for an air permit for a concrete batch plant (registration 119443L001) at 5001 Gasmer in the Westbury area next to the Willow Waterhole conservation reserve.

A public hearing on this permit application was held at Westbury High School in July. The applicant requested a hearing by the State Office of Administrative Hearings (SOAH). SOAH held a formal contested hearing on December 15, which was a legal proceeding similar to a civil trial in a state district court. This hearing had been delayed from the scheduled November date per the request of the applicant, SSC. The purpose of the December 15 hearing was to hear requests to be named as a "party". Any person can request to be named a party, but to make the request, the person needed to attend the hearing and show how they would be affected in a way not common to the general public. Any person who permanently lives within 440 yards (1/4 mile) of the site is automatically entitled to be named a party, upon request.

Much of the testimony and evidence at the December hearing focused on where the facility will be located and where the 440 yard radius should be drawn. The placement of this circle determines who is automatically entitled to be named a party. The circle depicted by SCC at the December hearing was different than the circle presented by SCC at the July public hearing and now extends into the area south of US90A. A third and different map was presented by TCEQ.

Environmental lawyer Charles Irvine was retained to represent the WWGC and affiliated parties. His retainer was paid with board approval from the WWGC, the WCC, and the WAIC. Also, the state provided a lawyer from the Office of Public Interest Counsel (OPIC). The OPIC website says that "OPIC participation ensures that environmental permitting applications satisfy all legal requirements and will be adequately protective of human health and the environment."

The Willow Waterhole Greenspace Conservancy (Ralph Rieger), the WAIC (Cindy Chapman), the Westbury Super Neighborhood (the WCC and the WAIC

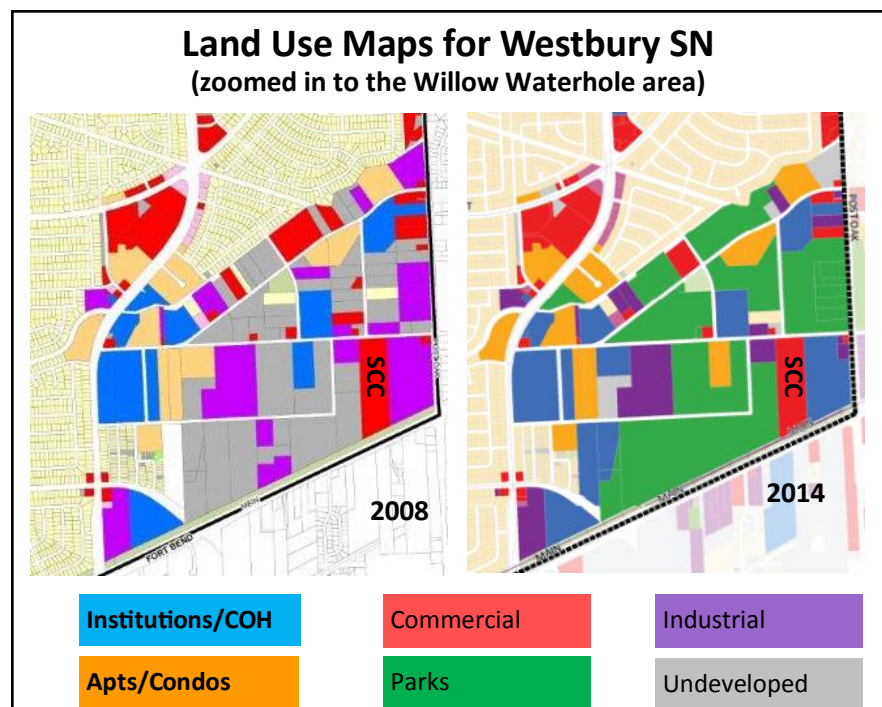
jointly - by Becky Edmondson and Cindy Chapman), and SWHouston2000 (Mike Bercu) each attended and asked to be named as a party. Homeowner Chris Zider asked to be named as a party – both as an individual and as a board member of the WWGC since his property is located within the 440 yard radius in some maps. The owner of Ranchwood Apartments, Joseph Shahdan, presented affidavits from 20 apartment residents who have asked to be named a party and have asked him to represent them. District K City CM Larry Green noted that the location of the 440 yard radius keeps changing and residents who live south of US90A may not be aware of new versions of the map that extend in that direction. He noted earlier testimony from SSC stated that SSC had not reached out south of US90A. TX Rep. Borris Miles spoke to express his concerns about the process. CM Green said that the City of Houston will seek party status on behalf of city residents and Super Neighborhoods affected.

After hearing all the requests, the hearing judge said that only those who actually reside in the 440 yard radius (Note: by extension, this would also mean their representatives) would be allowed to request a contested hearing. However, he noted that conflicting evidence had been presented and it was a close call to determine who lived in the zone. The lawyer for SCC said they opposed everyone who had made a request to be a

party at the hearing. The lawyer for OPIC supported requests by the WWGC, Mr. Zider, and the residents of Ranchwood Apartments represented by owner Mr. Shadhan. The lawyer retained by the WWGC, Mr. Irvine, stated that he supported the requests by the WWGC, Mr. Zider, the residents of Ranchwood represented by Mr. Shadhan, the residents of the convent, and inquired whether the judge would entertain adding other parties who lived in the zone. The judge agreed to allow a limited period of time for additional area residents to ask to be parties and said that he would make his decision in January as to who the parties to the case would be.

Other people who attended the hearing, but did not speak, included: Marcia Hartman (WCC and WAIC), Howard Sacks (WWGC), Paul and Jo Zider, Mark Meyers from the Houston Audubon Society, and representatives from the office of El Franco Lee and from the Harris County Legal Department.

The WCC and the WAIC will continue to stay involved in the process since the proposed site of the facility is in the Westbury Super Neighborhood and will affect Westbury area residents and parks, even though we will not be direct participants.





\* Happy New Year \* 2015 \* Happy New Year \* 2015 \* Happy New Year \*

Wishing you Good Health & Prosperity!




**Tony & Charlsej Porcarello**

\*\*\* Top Producers \*\*\*

We know Westbury & call it Home for 35 years!

Tony: 713.898.1546 tporcarello@yahoo.com  
 Charlsej: 713.898.1484 charlsej@swbell.net

Visit Us on the Web @ [www.porcarello.com](http://www.porcarello.com)

\* Happy New Year \* 2015 \* Happy New Year \* 2015 \* Happy New Year \*

\$\$\$\$ Free Copy of Tax Return on CD \$\$\$\$\$  
 \$\$\$\$\$ Free Review of Prior Year Return \$\$\$\$\$

**Schertz & Manning CPAs PLLC**

Pam Schertz, CPA      Diane Manning, CPA

Small Business Accounting & Tax Services

5322 West Bellfort, Suite 211    Houston TX 77035

**281-974-2096**

**ASTRO PLUMBING**

“YOUR PROFESSIONAL PLUMBER”

BEST PRICES • FREE ESTIMATES • SENIOR DISCOUNT

**CALL JOHNNY**  
**Cell: 713-256-0017**

JOHN LEWIS      ALL MAJOR CREDIT CARDS ACCEPTED  
 M16312



**Legal Eagle CONTRACTORS REMODELING**  
 Since 1974

[www.legaleaglecontractors.com](http://www.legaleaglecontractors.com)

**Houston's Most Trusted contractors**



BBB Rating: A+



**Dan Bawden, Master Builder**  
**713-723-8850**

Come see our Showroom at  
**5008 Locust Street**  
 at South Rice, Bellaire

**Design and Build**  
**Kitchens ★ Baths ★ Additions**

*Westbury's favorite remodeler for over 25 years!*



Senior-focused Remodeling is our Specialty




# BryanCalvinSmith.com

Westbury's largest...

Westbury's oldest...

Westbury's only...

Independent Insurance Agency

713-723-9353