



Westbury Crier

VOLUME 59, ISSUE 1

JANUARY 2013

HIGHLIGHTS:

- WCC Board Meeting: January 16th at 7PM at Westbury Baptist
- January's heavy trash is **TREE WASTE ONLY**. Pick up is January 10 for ALL of Westbury.
- Don't forget to pay your 2013 Dues, form on page 12
- HAPPY NEW YEAR!

INSIDE THIS ISSUE:

Platou Center	4
Calendars	5
Westbury Park	6
Trash Explained	7
Trash Explained	8
Deed Restriction	9
Accomplishments	10
Dues Form	12
Crime/Security	13
Bond Update	16
Working on Westbury	18
BOMD	19
Urban Harvest	20
Willow Waterhole	21
Assessments 2013	22
Deck the Halls	23

Exciting News for the Willow Waterhole

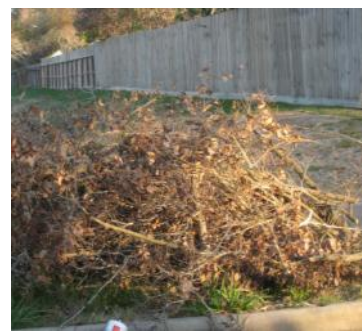
The Willow Waterhole Greenspace Conservancy (WWGC) has been awarded a \$399,999 grant that will fund improvements and amenities. The grant which was approved by the Harris County Commissioners Court in October will be administered by the Houston Parks and Recreation Department once all the paperwork is complete. The money will be spent on planting trees, adding trails, creating much needed parking spaces, and educational signage. When interviewed by the S W News, Westbury Civic Club (WCC) president Becky Edmondson said "We are excited about this grant and the improvements it will bring to the Willow Waterhole. The trails and infrastructure that you see now are from a Texas Parks and Wildlife grant from back in 2004. Parking is a much asked for and needed improvement. More

digging has been completed since 2004 and more trails are needed." Flood control is not the only benefit of the Willow Waterhole to Westbury, it also gives us almost 300 acres of greenspace in our backyard. Board members of the WWGC come from nearby neighborhoods, Westbury is currently represented by Cindy Chapman and Becky Edmondson.

And if the grant wasn't enough good news, hot off the press is the great news that the Mortimer and Mimi Levitt Foundation and the Levitt Pavilions announced a commitment to develop a Levitt Pavilion within the Willow Waterhole. This commitment came after a stellar sales pitch by District K CM Larry Green, the Brays Oaks Management District, WCC, Westbury Area Improvement Corporation (WAIC) and the City of Houston Parks Dept. on behalf of the WWGC.

The Levitt Program brings communities together through the experience of music. The pavilion is a catalyst for professional concerts, which are free to the public, to revitalize underused parks and public spaces and provide a place for neighborhoods to connect. The Mortimer and Mimi Levitt Foundation and the Levitt Pavilions chose the Willow Waterhole as an ideal site for a Levitt Pavilion where families, neighbors, and all age groups and backgrounds will gather to enjoy "music under the stars." To learn more about the Levitt Pavilion and the Willow Waterhole Greenspace Conservancy, please visit their website at <http://www.wwgc.org>. The WWGC welcomes visitors to their monthly board meetings. This could be just the opportunity you have been looking for to become involved in something exciting.

SPECIAL TRASH FEATURE ON PAGES 7 & 8



- ⇒ What is the difference between Junk Waste, Tree Waste, Yard Waste?
- ⇒ What can I take to the city's different recycling centers?

Check out pages 7 and 8 for all the answers!

Published by:
Westbury Civic Club, Inc
Editor-in-chief:
Jennifer Edmondson
Edited by:
WCC Publication Committee
Copyrighted ©

Fruit Tree Sale: see page 20 for details

New Genealogy Class Thursdays, See page 4

Westbury Civic Club Board of Directors

President	Becky Edmondson	wccpresident@westburycrier.com
Vice President	Marcia Hartman	wccvp@westburycrier.com
Secretary	VACANT	wccsecretary@westburycrier.com
Treasurer	Pamela Schertz	wcctreasurer@westburycrier.com

Directors at Large

Communications	VACANT	wcccommunications@westburycrier.com
Community Relations	Cindy Chapman	wcccommunityrelations@westburycrier.com
Deed Restrictions	VACANT	wccdeedrestrictions@westburycrier.com
Flood Control & Infrastructure	VACANT	wccflood@westburycrier.com
Greenspace Beautification	Carlos Mata	wccmaintenance@westburycrier.com
Membership	Janie Schexnayder	wccmembership@westburycrier.com
Security	Leslee Cross	wccsecurity@westburycrier.com
Volunteer Coordinator	VACANT	wccvolunteers@westburycrier.com

Section Directors

Westbury 1	Sylvia Rendon	Westbury1@westburycrier.com
Westbury 2	Austin Chen	Westbury2@westburycrier.com
Westbury 3	VACANT	Westbury3E@westburycrier.com
Westbury 3	Ron Brown	Westbury3W@westburycrier.com
Westbury 4	VACANT	Westbury4E@westburycrier.com
Westbury 4	Vicki Eldridge	Westbury4W@westburycrier.com
Westbury 5	Virginia Livingston	Westbury5E@westburycrier.com
Westbury 5	VACANT	Westbury5W@westburycrier.com
Westbury South	Robert Capps	Westburysouth@westburycrier.com
Parkwest 1	William Grimsinger	Parkwest1@westburycrier.com
Parkwest 2	Peter Zografos	Parkwest2@westburycrier.com
Parkwest 3	Joe Niles	Parkwest3@westburycrier.com

Westbury Civic Club Office

Office Hours: Monday—Thursday 9:30AM— 1:30PM*, Closed Fridays

Address: 5322 W Bellfort Ste. 107 Houston, TX 77035

Phone: 713-723-5437 **Office Manager:** Jennifer Edmondson

Email: Westburycc@sbcglobal.net

*The office is closed on all major holidays, weekends (follows HISD calendar)

FREE NOTARY SERVICE IS AVAILABLE TO ALL WESTBURY RESIDENTS

USEFUL PHONE NUMBERS

Westbury Area Patrol Constable Dispatch

281-463-6666

HPD Non-Emergency

713-884-3131

Power Outages (Centerpoint)

713-207-2222

Westbury HPD Storefront

713-726-7126

Platou Community Center

713-726-7107

Poison Control

1-800-764-7661

Street Light Repairs (Give pole number)

713-207-2222

District K Councilmember Larry Green

832-393-3016

District C Councilmember Ellen Cohen

832-393-3004

County Commissioner El Franco Lee

713-755-6111

City of Houston 311 Hotline

(for all Non-Emergency Issues)

Forestry Department

Graffiti

Hazardous Waste Disposal

Heavy Trash

Neighborhood Protection

Parking Management

Recycling

School Crossing Light Repairs

Water and Sewer Repair

Stay connected!

**Are you one of the 515
likes on our Facebook
page, Westbury Houston?**

WWW.WESTBURYCRIER.COM

President's Message

As I begin my third term as president, I am looking forward to 2013 as well as looking back over 2012. I want to take a moment to thank each one of you reading this. Just by virtue of your living in Westbury each of you is a member of the WCC. When you find yourself asking what does the WCC do or why don't "they" do something about something bugging you, remember, you too are part of the team. There are many things you can do such as calling or emailing the office with your concerns or calling 311 to report things and paying your dues.

You will read on page 10 about our accomplishments for 2012. It was a busy year and at times I felt like I spent more time on WCC business than I did on my "real" job! I expect 2013 will be more of the same because we have a huge project to tackle. For years you have read about Deed Restriction revision and now it HAS to be accomplished. With the city about to approve Chapter 42 extending the urban designation to all property outside the 610 loop, we have important modifications that need to be made.

In 2012 we planted more trees and worked on protecting our existing trees. You can expect the same in 2013. Caring for our existing tree canopy is just as important as planting new trees. Trees for Houston has started their Tribute Grove tree planting at the Willow Waterhole. Trees are vital to our community.

And speaking of community, we've spent hundreds of hours working on saving the Westbury Community Garden. We plan to move forward with plans to protect that property by having it purchased from the Houston Housing Authority. We recently met with the Houston Parks Board to discuss ways to make that happen. The garden continues to thrive and new beds will be added before spring planting begins to allow those on the waiting list to join the garden.

The improvements to Westbury Park will be coming soon and we thank all of you who have so generously contributed and worked on this project! A special thanks to all of you have worked on the tree planting and mulch

spreading. I am looking forward to a big grand opening celebration!

We thank all of you who received deed restriction violation letters for your cooperation in bringing your property back to neighborhood standards. I want to compliment one landlord who removed a renter who continually violated the deed restrictions of the property and replaced them with a resident who has been in the running for Yard of the Month multiple times since they moved into Westbury. If you are suffering in silence because an absentee landlord has a troublesome tenant, please let us know. We are a deed restricted community. Commercial vehicles and commercial endeavors are not allowed in or on your residential property.

I would like to thank all the volunteers who donate their time to help keep Westbury Wonderful. I am looking forward to 2013 even though we have a mountain of work to do! Wishing you a Happy New Year and all the best for 2013!

-Becky Edmondson

January Volunteer Opportunities

*Scanning Historical Documents at the WCC office, call Jennifer at 713-723-5437

*Deed restriction revision committee, call Jennifer at 713-723-5437 for more information

*PW2 resident? Want to be on the architectural control committee? Call the WCC office at 713-723-5437

*Street light check, call WCC office, 713-723-5437

WCC Board Meeting
Wednesday, January 16
7PM-9PM
Westbury Baptist

HAPPY NEW YEAR!



It's time to pay your dues!

Please send in your support that:

- 1.) protects your investment in your home by keeping Westbury a strong and vibrant neighborhood
- 2.) protects your home and family with the Constable service
- 3.) improves the look of our greenspaces
- 4.) keeps the doors to your Civic Club office open

The dues form is on page 12.



“Like” our Facebook page, Westbury Houston!

"Like" us on
Facebook

Platou Community Center

11655 Chimney Rock

Monday-Thursday 12PM—8PM; Fridays 11AM-7PM

Supervisor: Dan Reilly, Daniel.reilly@houstontx.gov or 713-726-7107

"Like" us on
Facebook

JANUARY SPECIAL EVENTS

Introduction to Genealogy

A three week introductory genealogy class will start Thursday, January 17 from 2 - 3:30PM in the classroom at the Platou Center. Pat Metcalfe, a genealogist and Westbury resident, will help class members trace their own family history. Call Dan at 713-726-7107 or Pat at 713-721-7062 to register.

Free Seminar on Chiropractic's & Enzymes

Antony Anson Barnes will be conducting a free seminar on Chiropractics and enzymes on Jan. 22 from 6PM to 7PM

Classes/Groups/Meetings

Stretching Exercise Class M, W, F 9-9:45AM

Aerobics Tues. and Thurs., 6:30-7:30PM

Line Dancing Class Mon., 1-2PM

CALL 713-726-7107 FOR MORE INFORMATION FOR
THE ABOVE 3 CLASSES LISTED

TOPS: Take Off Pounds Sensibly

Weight loss support group: Tues., 5:45-7PM

Drop in to preview the program or call Dorothy 713-723-4441 or Naomi 713-988-2233

Ballroom Dance Class : Wed., 6-8PM

Call Marilyn at 713-729-9425. Classes resume Jan. 9

Quilting Workshop Tues., 10AM - 3PM

Contact Janie at 713-721-5526

Games Wed., 10 AM

Contact Wally at 713-729-9310

Portable Projects Thurs., 9:30- 11:30AM

Any kind of handiwork: knitting, crochet, needle-point, card-making. Contact Hazel at 713-729-4568

Westbury Community Garden Mon., Jan 14 at 6:15PM. Public welcome! Come learn about the Garden and gardening.

2013 Class Wish: Jewelry

Do you like to make jewelry? Would you guide a small group of women who would like to learn to make bracelets, earrings, and necklaces? Good choice of times available. Call Dan at 713-726-7107.

After School Enrichment

This is a **free** childcare program for kids ages, 6 to 13, from 3PM to 6PM. Call 713-726-7107 for more information.

January Closures/Schedule

Jan. 1: CLOSED

Jan. 2-4: OPEN

for children's activities

Jan. 7: RESUME NORMAL

SCHEDULE

Jan. 21: CLOSED



Don't forget you can
recycle cardboard/
paper items at
Chimney Rock Park!

WE ARE IN YOUR NEIGHBORHOOD

We live and work in the neighborhood!



JACKIE MURRAY

Cell: (713) 825-9179

jackiem@waynemurray.net



Wayne Murray Properties

*Area Residents &
Neighborhood
Specialists*



KENDYL MAURER

Cell: (281) 904-8199

kendylm@waynemurray.net



5123 Willowbend
Just Listed!



6035 Yarwell
Just Listed!

"We sell more, because we do more."

Call for more information on featured listings!



5914 Rutherglenn
\$419,500



5242 Willowbend
\$254,500



Your Home Could Be Here!!!



5223 Kinglet
\$207,500



11007 Hillcroft St.
Just Listed!

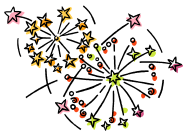
What's Happening in Westbury

Events & Meetings Calendar January 2012

Tues 1	WCC Office will be closed for New Year's Day.
Sat 12	Tree Planting at Tribute Grove 9AM –11AM For more information, see page 21
Mon 14	Westbury Community Garden Meeting 6:15PM Platou Community Center— 11655 Chimney Rock
Wed 16	WAIC/Super Neighborhood #37 Meeting 8:30-10AM Salem Lutheran—4930 W. Bellfort Open to all Westbury residents!
Wed 16	WCC Board Meeting 7PM– 9PM ***NEW LOCATION*** Westbury Baptist Church—RM C103 Open to all Westbury residents!
Sat 19	Willow Waterhole Monthly Audubon Society Bird Survey 8AM Meet at The Gathering Place parking lot—5310 S. Willow
Mon 21	WCC Office Closed for MLK Holiday
Mon 21	Brays Bayou Association Meeting 7:30PM The Gathering Place—5310 S. Willow
Tues 22	SW PIP (Police Positive Interaction Program) Meeting 7PM Aramco Building—9009 W. Loop South

Happy New Year

from the
Westbury Civic Club!



Planning Calendar:

February 1, 2013: Mandatory Assessments due for PW1 & PW2

February 22, 2013: Rodeo Trail riders at Westbury Area Schools

Heavy Trash & Recycling Calendar

January 2012	
Thurs 10	Curbside Recycling All of Westbury
Thurs 10	Heavy Trash— TREE WASTE ALL OF WESTBURY
Thurs 24	Curbside Recycling All of Westbury
February 2012	
THURS 14	Heavy Trash— TREE WASTE ONLY ALL OF WESTBURY

City of Houston Heavy Trash

January	Tree Waste	July	Tree Waste
February	Junk Waste	August	Junk Waste
March	Tree Waste	Sept.	Tree Waste
April	Junk Waste	October	Junk Waste
May	Tree Waste	Nov.	Tree Waste
June	Junk Waste	December	Junk Waste

ATTENTION ALL RESIDENTS:

EFFECTIVE **NOVEMBER 2012**, THE HEAVY TRASH SCHEDULE HAS BEEN CHANGED. **ALL OF WESTBURY** WILL NOW BE PICKED UP ON THE **2ND THURSDAY** OF THE MONTH. This change was only for the pick up day, not for the type of trash picked up.

For monthly breakdown of trash type, please see chart above.

Important Trash & Recycling Information

- ♻️ Trash cans need to be on curb by 7AM Thursday
- ♻️ Trash cans must be removed by 10PM Thursday
- ♻️ **Trash** cans must be placed at least 3 feet apart
- ♻️ Trash cans must be stored out of sight.
- ♻️ Yard waste **MUST** be in the correct biodegradable bags
- ♻️ No heavy trash out before 6PM the Friday before pick-up date
- ♻️ **YARD WASTE** is not considered tree waste & won't be collected with heavy trash. It is collected on regular Thursday trash day as long as it is in the correct recyclable bags
- ♻️ Call 311 for all trash questions and complaints
- ♻️ Nearby Trash Depositories and Recycling Centers:
SW Trash Depository/Recycling Ctr -10785 Southwest Frwy
Hours: Wed.—Sun. 9AM to 6PM; Accepts Junk Waste, Tree Waste and Recyclables. Current utility bill needed.
Environmental Service Center - 11500 South Post Oak
Hours: Tues/Wed. 9AM-3PM; 2nd Saturday 9AM-1PM
Accepts Hazardous Household Waste & Electronic Waste
- ♻️ Refer to www.westburycrier.com, or www.houstontx.gov or more trash and recycling information

Westbury Park

Help Westbury Park Get a New Shade Structure

A new Westbury Park Playground is coming soon! See the design for one of the playground structures pictured below. There is an additional Toddler Playground included but it is not pictured. Westbury Park is the park located near Parker Elementary. The existing playground equipment will be demolished by the city in a few months and construction of the new playground area will begin in early 2013. City taxpayer funds will purchase and install the play equipment; however, the city does not provide shade covers similar to what has been built at the nearby Godwin Park playground. A "Friends of Westbury Greenspaces" committee has been created to raise additional funds to purchase a shade cover similar to what has been built at Godwin Park (see picture on the right). The neighborhood around Godwin Park raised money to build their shade structure, and **we can do it, too!**

Playgrounds are attractive assets to our community and play structures with shade will encourage our kids or grandkids to exercise outside even in hot weather. Please consider making a tax deductible contribution. Many employers offer matching gifts for community projects such as this. All amounts are appreciated and donors contributing \$250 or more will have their names engraved on a plaque placed at the playground as a permanent thank you.

Please use the form below. The WAIC is a 501(c)(3) organization which frequently partners with the Westbury Civic Club for improvement projects. Donations will be tax-deductible to the extent allowed by law. If you would like more information about fundraising or would like to help with the effort, then please contact Westbury residents Bill Burhans (burhans56@yahoo.com) or Melanie Rosen (rosenworks3@gmail.com).



Main Playground
(Ages 6-12)



**Donations as of
12/22/12**

**\$14,198 from Westbury
residents and businesses
and \$1,375 in matching
grants from employers.**

Total= \$15,573

Friends of Westbury Greenspaces Donation Form

Name(s): _____
 Address: _____
 Phone #: _____
 Email: _____

Donation Amount \$ _____ * (if amount is \$250 or more please fill out below)

*Names on plaque: _____

Mail donations to: WAIC/Friends of Westbury Greenspaces, 5322 W. Bellfort, Suite 107, Houston, TX 77035.

Checks should be made payable to the Westbury Area Improvement Corporation (WAIC)/Friends of Westbury Greenspaces.

**Welcomes
New Clients! 10% off
boarding with Ad**

FoNDReN
5 STaR KeNNeLS
281-835-4445

Boarding
 Grooming
 Training
 Doggie Day Care
 Dog Park
 Supplies

14420 Fondren, One block South of Beltway 8
www.fondren5starkennels.com

**Westbury
Executive Office
Business Center**

We support growing businesses

11415 Chimney Rock
 Houston, TX 77035

Phone (713)729-1122
 Fax (713)729-5431
 E-mail: Rieger@riegercpa.com

TRASH EXPLAINED...

2013 Monthly “Junk Waste” or “Tree Waste”

Unlike many cities, the City of Houston provides residents with FREE curbside monthly heavy trash collection, alternating “TREE WASTE” collection months with “JUNK WASTE” collection months. The collection cycle is the same every year, as shown below. **ALL of Westbury is now picked up on the 2nd Thursday of each month.**

TREE WASTE MONTHS	JUNK WASTE MONTHS
January	February
March	April
May	June
July	August
September	October
November	December

We all want Westbury to look as attractive as possible, so it is important to pay attention to when you may legally place your heavy trash at the curb. If you are not sure, you may call the WCC office or “like” the WCC Facebook page to get trash updates. **ALL of Westbury is now picked up on the 2nd Thursday of each month.**

Trash Can Placement

Household garbage must be put inside the city-provided container which should be placed at the curb between 6PM Wednesday evening and 7AM Thursday morning. The container must be accessible to the automated collection truck and not blocked by obstacles, including parked cars. Homeowners with multiple trashcans MUST place trashcans three (3) feet apart. Do not place cans next to light poles or trees. The city has started tagging cans that are placed incorrectly. Homes on corners must place their trash cans on the front street (not side). Trash cans must be removed from the curb by 10PM Thursday.

JANUARY HEAVY TRASH- Tree Waste Only

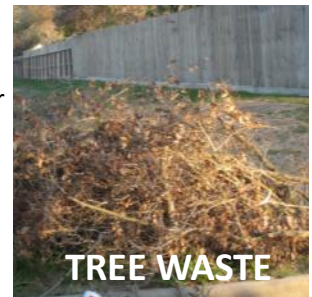
What is “Junk Waste”?

“Junk Waste” includes furniture, appliances, lumber, fencing, and other bulky items (including tree waste, but the tree waste would then be sent to landfill rather than mulched). The city will NOT collect bagged yard waste placed in improper bags during a Junk Waste month.



What is “Tree Waste”?

“Tree Waste” consists of tree limbs, shrubbery limbs, or branches of trees and shrubs. If the Tree Waste has other types of materials mixed in with it, then it is no longer Tree Waste. Lumber, fencing and similar materials are NOT considered Tree Waste. During a Tree Waste month, only Tree Waste materials will be collected by the city.



What is “Yard Waste”?

“Yard Waste” consists of leaves, grass clippings, small yard trimmings or branches. Yard Waste must be in a city-approved bag, or small branches bundled (tied) into a pile less than 4 feet long, less than 18 inches in diameter, and less than 50 pounds in weight. “Yard Waste” is picked up every Thursday.



What is “Recyclable”?

Steel or aluminum cans. Paper. Certain plastics, not # 6. Glass is NOT allowed in the small recyclable containers. Glass IS allowed in the large recyclable bins. Recycling is picked up every other Thursday.

What goes in the large black trash bins?

Household garbage such as personal trash and food preparation waste are to be placed in the large black trash bins. Household garbage day is Thursday. No yard waste, dead animals, household hazardous waste, or electronics.

Too much trash this week? Buy “tags for bags” from Fiesta, HEB and participating Kroger stores so city will pick up your extra bags of trash. Cost is \$ 2 per tag, plus tax.

RED
RIVER CONTRACTING
713-665-9500
WWW.REDRIVERTRADES.COM

BBB MEMBER GABA NAHB TEXAS ASSOCIATION OF HOME BUILDERS

RRC

Concrete Contractors

Driveways - Foundations - Patios - Walks
 Pavers - Stained Concrete - Breakout
 Residential & Commercial

Serving The Westbury Area for 5 Years

Texas Registered Builder #44786

Bonded & Insured



TRASH EXPLAINED...

Environmental Service Center – South

(Recycle and Household Hazardous Waste)

11500 South Post Oak - between Gasmer and South Main

The Environmental Service Center accepts household hazardous waste such as anti-freeze, batteries, fuel, oil, paint, paint thinner, pesticides, herbicides and household cleaners. Residential electronic scrap items will also be accepted (monitors, televisions, printers, keyboards, mice, scanners, fax machines, telephone handsets, VCRs, CPUs, cellular phones and other small consumer electronics). These items should not be placed on the curb with or in your container for collection with garbage or heavy trash pick-up. The center is open every Tues. and Wed. from 9AM to 3PM and the 2nd Saturday of the month from 9 AM- 1 PM.

Free Paint

The City of Houston's Environmental Service Center South offers free paint to give your home a fresh look for the new year. Located at 11500 South Post Oak Road, the Center is open for paint distribution on Fridays (except if the Friday falls on or near a holiday) from 9AM to Noon. First come, first served.

Southwest Neighborhood Depository and Recycling Center (for Heavy Trash Drop-off)

10785 Southwest Freeway Houston, TX 77074

Phone: 713.541.1953

This facility accepts Junk Waste, Tree Waste and Recyclables at no additional charge to City of Houston residents. Citizens may use the depositories four times per month. You must provide a Texas Driver's License or ID and a current utility bill or city property tax receipt. **The depositories will accept the following items:** Furniture, Tree limbs, Stoves, Refrigerators, etc., 10 auto tires (Rims Not Accepted) Open Wednesday – Sunday (except holidays) from 10AM to 7PM.

Christmas Tree Recycling

The City of Houston encourages residents to recycle Christmas trees. The recycled trees will be converted into mulch, which will help save landfill space and help preserve the environment.

Trees WITHOUT Artificial Snow: Home Collection: In Westbury, these trees will be collected for recycling by the city during the January "Tree Waste Heavy Trash" pickup days. They may be placed at the curb starting at Friday night on January 4, 2013, for collection on January 10 for ALL of Westbury. Trees for recycling may be taken to our Southwest Neighborhood Depository at 10785 Southwest Freeway.



Items that can be taken to the Environmental Service Center

Trash Violations

Violation of any provision of the solid waste ordinance is punishable upon first conviction by a fine of no less than \$50 nor more than \$2,000. Each subsequent conviction is punishable by a fine of no less than \$250 nor more than \$2,000. Each day that any violation continues may be punishable as a separate offense. **To report a violation or to file a complaint, call 311.** Solid Waste Management Department Supervisors can write citations.

Westpark Recycling Center

5900 Westpark

This facility allows Houston residents the opportunity to recycle their used goods. **The center accepts:** aluminum and tin cans, batteries, oil filters, used tires, computers, #1-7 plastic containers, GLASS bottles and jars, telephone books, office paper, cardboard, magazines, and used motor oil. Newspapers placed in a brown bag will also be accepted. Open Monday– Saturday from 8AM to 5PM. This facility is a drive through operation so you do not have to unload your vehicle.

Reuse Warehouse

9003 N. Main St.

Construction material accounts for 38% of the waste stream in the Houston area. The Building Materials Reuse Warehouse benefits the community by providing space for excess building materials that would otherwise be dumped into local landfills. The facility accepts material from individuals, supply companies, and builders, and makes it freely available for reuse by any non-profit organization. Open Tuesday thru Friday from 8:30AM to 4:30PM and every 2nd and 4th Saturday of the month from 8:30AM to 12:30PM

Meadows Preschool



creative learning experiences
professional teachers
Babies—Pre K.

713.255.7025
4300 W. Bellfort
77035

INCOME TAXES... TRAFFIC...
At least we can make one less stressful!

Ralph Rieger, CPA

11415 Chimney Rock
713.729.1122 • www.RiegerCPA.com

Deed Restriction Revision

In 2013 all of Westbury will be at the forefront of an initiative to move Westbury toward more stable finances and to protect the suburban nature of Westbury.

Volunteers will start seeking signatures to change the deed restrictions for each section of Westbury. Every signature is important and a majority of property owners in these sections need to sign the forms. If more than one owner exists for a property, then the volunteers will try to obtain as many signatures as possible for that property, since each lot currently may have more than one vote.

Here is a summary of the proposed changes. Details will be posted on the Westbury Civic Club website.

- ⇒ grandfathered mandatory assessments – will NOT affect current homeowners; only owners who purchase a home after the amendment goes into effect will be subject to mandatory assessments
- ⇒ One vote per lot for future deed restriction modifications
- ⇒ WCC is named as the entity to collect and spend the assessments
- ⇒ Word strengthening/clarifications due to COH's anticipated adoption of Chap. 42

Deed Restriction Revision Q & A

The WCC keeps talking about deed restriction revision but never does anything. Why is this year different? The city's anticipated adoption of Chapter 42 changes the designation of all property outside of Loop 610 to Urban rather than Suburban. Most of Westbury's deed restrictions were written in the late 1950's and while they are very good, they need some clarifications and word strengthening based on today's legal world.

This is an important issue for me. How do I volunteer to help?
Contact the WCC office to volunteer.

I am confused by this "grandfathering" stuff. Please explain.
Currently Parkwest 1 and Parkwest 2 have mandatory assessments and updated deed restrictions. These sections of Westbury also used "grandfathering" to successfully obtain the number of signatures needed to implement the revised deed restrictions for their sections. "Grandfathering" means that existing property owners would not be affected by the revised deed restrictions requiring mandatory assessments. Only new property owners, those who acquired the property after the effective date, would be affected by the mandatory assessments.

Why does the WCC need so much money? Supplementary security patrols by Harris County Precinct 5 Constables are expensive and must be contracted in advance for an entire year at a time. Furthermore, as WCC income has declined over the years relative to inflation, the WCC has reduced office hours. The WCC would like to serve our residents better by increasing office services. As the City of Houston experiences more and more cutbacks, keeping our esplanades and greenspaces looking good falls more to the neighborhood.



Strokes strike quickly.

Our certified stroke care ensures the best chance for a better outcome.

We're continually taking steps to deliver the absolute highest level of stroke care. Because of our efforts, we've received the Gold Seal of Approval™ from The Joint Commission and the Excellence Award™ in Stroke Care from HealthGrades®. Both of these achievements reflect our ability to handle any stroke emergency and, more importantly, our commitment to timely, life-saving care.

To schedule a Carotid Doppler screening and learn your risk of stroke, call 713.222.CARE (2273).



7600 Beechnut
Houston, TX 77074
memorialhermann.org

**MEMORIAL
HERMANN**
Southwest

2012 WCC Accomplishments

The purpose of the Westbury Civic Club as set out by our bylaws: are to improve the appearance of the Westbury area and promote the civic, cultural, educational, health, and general welfare of the residents of the Westbury and Parkwest subdivisions. Other than our part time office manager the rest of us are volunteers. If you are interested in the Working on Westbury effort, we would love to have you join us. We accomplished quite a bit this year and I hope you have noticed that Westbury is a greener, cleaner, friendlier neighborhood. Here are some highlights from 2012.

Support for our Residents: Office Hours were expanded around the White Elephant Sale time to accommodate the schedules of working residents. The Civic Club office handled hundreds of calls from residents and many problems were solved. We work closely with the Mayors Assistance Office and the District K office when things are not resolved through 311.

Security: We were pleased to welcome our new Security Director, Leslee Cross. She and WCC Office Manager Jennifer Edmondson meet with a constable representative on a regular basis to discuss security issues. The work schedule for our contract constable patrols was revised to improve coverage hours. We signed on to continue the WAP Patrol for 2013 and there was no price increase. We are investigating more coverage options for 2013.

Communications: The Crier, our monthly newsletter, was improved by adding 8 more color pages! It went from 16 pages to 24. A new distributor is being used to deliver the newsletter each month. We continue to gain additional fans on Facebook and now have over 500 fans. We helped reunite a lost dog with its owner through Facebook. We strive to keep our residents aware of issues relevant to Westbury through our website, Facebook and the Crier.

Awards: "Community Stars Award" (from DEA and Mayor's Anti-Gang Taskforce)– for the Westbury Community Garden project. Hazel Potvin won a Keep Houston Beautiful Mayor Proud Partner award for her work at the Platou Community Center and our greenspaces.

Beautification: New trees were planted and mulched on West Bellfort and at Westbury Park. Landscape beds on Westbury esplanades were fertilized, mulched, and de-littered on a regular basis. Our contractor mowed and maintained the esplanades at the intersection of West Bellfort and Chimney Rock, plus mowed areas which do not get frequently mowed (such as pipeline or flood control easements). Trees were trimmed on Hillcroft south of West Bellfort and this tree trimming will continue until all our trees have been cared for. They are a valuable asset.

Advocacy: We strongly advocate on behalf of all of Westbury and have residents that serve on many important boards such as the Westbury Community Garden, the Westbury Area Improvement Corporation, the Westbury High School Improvement Group, the Willow Waterhole Greenspace Conservancy, Southwest Houston 2000, the Braes Oaks Management District, the Brays Bayou Association, and the Super Neighborhood Alliance. We meet with city and county officials on a regular basis. We are working to bring single stream recycling to all of Westbury. We continue to strongly advocate on behalf of the Westbury Community Garden in order to keep those 7 acres as permanent greenspace rather than becoming a low income housing project.

Neighborhood Protection: We meet monthly with City of Houston's Department of Neighborhoods to review outstanding 311 items and to track their progress. We worked with City Legal on several homes that were running commercial businesses or parking commercial vehicles at their residence and these problems were eliminated. We thank both the city and the residents for their cooperation in complying with the deed restrictions of their property. We are currently working on about 10 homes that have been long standing problems, some over 20 years. Please be patient as these are works in progress.



YOU ALREADY RECYCLE.
GET REWARDED FOR IT.

Earn discounts and deals to local restaurants, businesses, and more! Register at Recyclebank.com today, and get rewarded for recycling.

Recyclebank



LEGACY ROOFING & exteriors

- FULLY INSURED
- FREE ESTIMATES
- NEW ROOF & REPAIRS
- SIDING
- ATTIC INSULATION
- 5 YEAR WARRANTY

713-819-5537 www.legacyroofers.com

Free Market Analysis

If you are thinking of selling your home or want to know the market value of your property, call **Larry Mercer** for a free Market Analysis.

713-826-7274

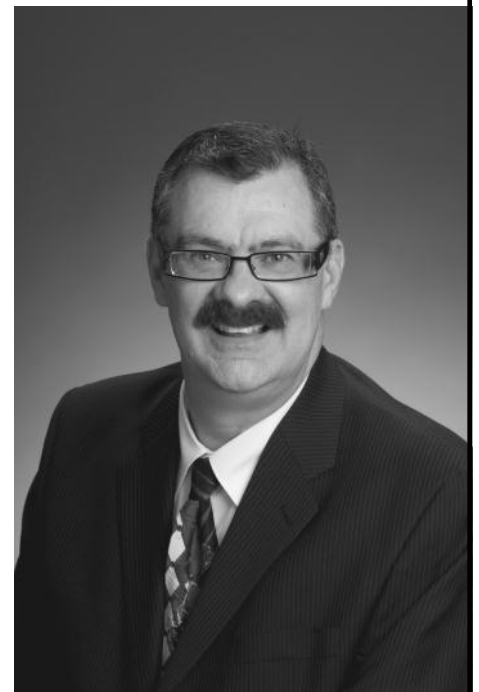
With 30 years of experience in the Houston real estate market, he will get the job done.

You may contact me by email at:

Lmercer@flash.net

Or visit my web site at:

www.Larrymercer.net



Neighborhood
Specialist

2013 Dues Form

2013 Westbury Civic Club Dues

***Please send
this form in with
your
payment**

Name(s) _____
 Address _____
 Home Phone _____ Work _____ Cell _____
 E-mail _____

Thank You Westbury!

We greatly appreciate the residents who used the past *CRIER* issues to submit their 2012 dues.
 Here's the 2013 form!

**Make checks payable to:
Westbury Civic Club, Inc.**
Mail to:
 P.O. Box 975182
 Dallas, TX 75397-5182
Online payment:
 paypal.com—Send Money to
 westburycc@sbcglobal.net
**Make sure to include your
 address or account number**

Westbury Civic Club Membership	\$40	\$
Greenspace Beautification	\$25	\$
Westbury Area Patrol	\$230	\$
Subtotal	\$295	\$
Additional Contributions:		
Westbury Civic Club		\$
Greenspace Beautification		\$
Westbury Area Patrol		\$
Westbury HPD Storefront		\$
Total		\$

Sending multiple payments?
 Circle your payment choice
 2 payment of \$147.50
 3 payments of 98.34
 **Call the office for more payment
 options or questions

**2013
Assessments
and Dues
statements
are in the
mail!**

WWW.WESTBURYCRIER.COM

Dick n' Sons
 Floor Covering Center

All Major Credit Cards
 Accepted
 M-F 8:00-5:00
 THURS. 8:00-7:00
 SAT. 10:00-4:00

713.981.1900
 6240 Bissonnet @ Hillcroft
www.dicknsons.com

Purchase any carpet and your First Annual Cleaning is Absolutely Free!

CARPET LAMINATE WOOD CERAMIC TILE VINYL!
 THERE'S JUST SOMETHING SPECIAL ABOUT A
 NEIGHBORHOOD FLOOR COVERING STORE....COME SEE WHY.
 SERVING WESTBURY FOR OVER 40 YEARS!



Mention this ad and
 receive 15% off any Cleaning Services

Water Heaters:
 Regular & Tankless
 Disposals
 Water Lines
 Gas Lines
 Drain Cleaning
 Under Slab Repairs
 Re-route kitchen & laundry pipes

ASTRO PLUMBING

Full Service Plumbing and Repair Specialist

713-256-0017

JOHNNY LEWIS

WESTBURY RESIDENT

New Sewer Lines
 Hydrostatic Testing
 Remodeling & Repairs
 Sinks
 Faucets
 New Drains under
 Bathroom

M16312 ★ Since 1985

★ Senior Discounts

★ All Major Credit Cards

★ Fully Insured

Crime/Security

Crime Statistics for Westbury Super Neighborhood 37* 30 days preceding November 15, 2012

	Single-Family Home	Apt/Condo	Commercial Property	Public Areas	Totals
Burglary	5	6	4	0	15
Theft	12	4	6	0	22
Auto Theft	0	4	0	0	4
Robbery	0	1	0	0	1
Assault	1	1	1	0	3
Rape	1	0	0	0	1
Murder	0	0	0	0	0
TOTAL	19	16	11	0	46

*Area bounded by: S. Post Oak, US 90/S. Main, utility easement north of Willowbend and drainage bayou, west of Braewick

Single Family Residential Crime Locations (30 days preceding 11/15/12)

11300	Atwell	Theft
12100	Braewick	Theft
5800	Claridge	Theft (x2)
5500	Dawnridge	Burglary
10600	Doud	Burglary
5700	Ettrick	Theft
5600	Hummingbird	Theft
5700	Hummingbird	Theft
11100	Hillcroft	Theft (x2)
5900	Sanford	Assualt
5900	Sanford	Burglary
6000	Sanford	Theft
5800	Warm Springs	Theft
6000	W. Airport	Burglary
5200	W. Belfort	Rape
5500	W. Belfort	Burglary
5800	W. Belfort	Theft

Westbury Square Update

In 2008, the City of Houston's Building and Standards Commission ruled that several buildings at Westbury Square were substandard, dangerous, or violated city ordinances. Since 2008, litigation has been held in various courtrooms about this issue.

In December 2012, the Court of Appeals for the First District of Texas ruled on an appeal made by the property owners of Westbury Square about prior court rulings on the case.

1. A trial court had previously agreed with the City that the city Building and Standards Commission had sufficient evidence available to make its ruling in 2008; the Court of Appeals said that the trial court did not err in making its decision.
2. The property owners claimed that their right of due process had been violated; the Court of Appeals said that the trial court did not err when it had granted the City a summary judgement about the due process claim.

What does this ruling mean for the future of Westbury Square? We do not know what the property owners will decide to do next. We will let our residents know when we find out new information about Westbury Square.

Meet Houston Police Chief Saturday, January 26, 2013

Houstonians will have the opportunity to meet with Houston Police Department (HPD) Chief Charles A. McClelland, Jr. at HPD's Police and Clergy Alliance Town Hall meeting, Sat., January 26, from 10AM- 1PM at Lakewood Church, 3700 Southwest Freeway.

This gathering is open to the public and is an opportunity for attendees to get up close and personal with Chief McClelland, as well as members of the HPD Command Staff, to voice concerns on how to strengthen police/community relationships. HPD captains from all patrol stations and members of various HPD divisions including Homicide, Internal Affairs and Juvenile will also meet with the public.

WAP Constable Dispatch

281-463-6666

Plumbco 713-725-5025

MPL 36609

For all your plumbing installations and repairs.

Gary Bloch • www.PlumbcoHouston.com

THE **FRESH MEX** YOU LOVE
NOW IN

Bellaire

MONDAY

\$1.99 FISH TACOS*

TUESDAY

KIDS EAT FREE ALL DAY*

WEDNESDAY

\$5 WINE*

THURSDAY

\$1.00 TAMALES ALL DAY*

SATURDAY

\$3 MARGARITAS ALL DAY

*RESTRICTIONS APPLY



LOCALLY OWNED AND OPERATED
SERVING BREAKFAST **SATURDAY** AND **SUNDAY**
FREE WIFI

BAJA GRILL MANTINA
BEKKYHILL

MONDAY - FRIDAY 11am - 10pm
SATURDAY 8am - 10pm
SUNDAY 8am - 9pm

5305 Bissonnet,
Bellaire TX 77401
713-665-8000

Little League and Libraries

Westbury Little League Spring 2013 Registration is now Open!

Sign up Today at
www.westburyll.org

Registration Information

Boys and Girls 4-5 years old* - \$175 per player
Boys and Girls 6-12 years old* - \$225 per player
For more information, contact
registration@westburyll.com
or call the phone hotline at (713) 723-1701

Season Schedule

Skills Evaluation – Jan. 26
Information Night & First Team Meeting – Jan. 31
Team Practices Start in February
Games— Feb. 23 - May 18

*ages prior to 5/1/13



Houston Public Library Offers E-books

Houston Public Library and its partners, EBSCOnet E-books, Gale Virtual Reference Library, OneClickdigital and Overdrive, are excited to offer downloadable e-books, audiobooks and videos to its customers who have a valid Library card in good standing and a compatible device. HPL offers everything from business and language learning to the latest mysteries and romances.

For more information on compatible devices, how to access the downloadable collection and other related questions, visit www.houstonlibrary.org/downloads or call 832.393.1313. For additional help with HPL e-books, visit E-Books for Texans at <http://sites.google.com/site/hplebooksfortexans/>

Computer Classes for Seniors

Houston Public Library is offering **free** computer classes specifically for seniors in libraries throughout Houston. Classes offered include Computer Basics, Internet Basics, Introduction to Microsoft Word, Introduction to Excel and Introduction to Power Point and Windows Basics.

The Gates Foundation recently featured the HPL digital literacy program for seniors in a video as part of a series spotlighting library best practices. View the video at <http://blogs.houstonlibrary.org/?p=2277> and experience how seniors are becoming empowered and are embracing the life changing services offered by the Library. Community members can find more information about classes such as the Fifty-Plus Computer Club (featured in the video) at <http://www.houstonlibrary.org/> or by calling 832.393.1313.

Report a Streetlight Outage

CenterPoint Energy maintains streetlights throughout our electric service territory in and around Houston. Use their website listed below to report a streetlight outage. If you do not have access to a computer, you can report street light outages or general power outages by calling 713-207-2222 or toll free 800-332-7143 <http://www.centerpointenergy.com/services/electricity/residential/electricsafety/reportastreetlightoutage/>

real estate market data FREE & CUSTOMIZED FOR YOU

Market Info | School Info | Community Info

Your Market St :37 PM.

Average Days on Market	Selling vs Asking Price	Asking and Sold Prices	Number of Homes for Sale
Days on market: 78	Selling below asking price: -5%	Median sold price: \$189,500	Homes for sale decrease: -17%

Have a Question? Get in touch. I'm happy to help. [Email me](mailto:susan@brockandfoster.com) or call 713-272-2000

Address	Price	On Market
6718 Cantabria Dr	\$257,000	98 days
6718 Cantabria Dr	\$257,000	107 / 5.7
6718 Cantabria Dr	\$244,300	32 days
6718 Cantabria Dr	\$124 / 5.7	
6847 Cartagena St	\$122,000	299 days
6847 Cartagena St	\$84 / 5.7	
6847 Cartagena St	\$85,000	52 days
6847 Cartagena St	\$80 / 5.7	
6847 Cartagena St	\$102,000	71 days
6847 Cartagena St	\$102 / 5.7	
6847 Cartagena St	\$117,000	85 days
6847 Cartagena St	\$94 / 5.7	

FREE MARKET SNAPSHOT www.houstonvalues.com
susan@brockandfoster.com

Find out what your home is worth, see what the house down the street just sold for and learn about neighborhood real estate trends. Visit www.houstonvalues.com to access your FREE customized real estate data report.

Market Snapshot is brought to you by Brock & Foster. Susan Brock is a specialist in Westbury and the surrounding areas. With more than 12 years experience she offers an individualized experience that has earned her a five-star client experience rating. Susan is a licensed broker and REALTOR.®



BROCK & FOSTER
RESIDENTIAL REAL ESTATE
www.brockandfoster.com

Office: 713-272-2000
Cell/Text: 713-922-0877
Twitter: @susanforreal

Updates on Bond Proposals

Let's ReBuild Meyer Library in Westbury!

In November 2012, Houston voters approved a city bond package for Libraries which specifically mentioned the Meyer Library (on W Bellfort near Willowbend). The bond proposal called for the Meyer Library to be completely rebuilt. The current building needs replacement and the lot it sits on (in Meyerland) is not very big. It makes sense to us that the new library could be moved a short distance away to our Westbury community where there is plenty of room for expansion. The current Meyer Library is located in District K, the same as most of Westbury. Many Westbury families use this library.

One plan we like is a combination library, multi-use community center, possibly with a retail component like a coffee or sandwich shop. Wouldn't that be a great addition for the whole area?

If you think that this is a good idea, then help spread this concept by contacting District K Council Member Larry Green, districtk@houstontx.gov and Mayor Parker at mayor@houstontx.gov. Additionally, if you happen among the 100 or so homeowners who live in District C, please also contact District C CM Ellen Cohen at districtc@houstontx.gov

New Parker Elementary Building: Construction Starting in 2015

Parker Elementary (corner of Willowbend and Atwell in Westbury) will soon be getting a **brand new school building** because Houston voters approved the November 2012 HISD Bond Referendum. Parker is in Group 2, which means that Planning and Design will begin in early to mid 2014, with construction anticipated in mid to late 2015. Schools which are in Group 1 will be starting the design process in early 2013.

The process will involve at least 3 community meetings. One will be held at the beginning of the design process and another will be held in the middle of the design process. Also, a meeting will be held shortly before the start of construction so that the community will have an opportunity to find out how the construction will affect students and neighbors.

A Project Advisory Team (PAT) (pictured to the right) has already been formed for Parker

Elementary with representatives from the school, parents, and the community. (see photo). Representatives on the PAT team are:

Lori Frodine, school principal; Carol Kehlenbrink, school magnet coordinator; Susan Shafer, school librarian; Josh Vanlandingham, parent and also a mechanical engineer with experience in the mechanical and electrical design of buildings; and Cindy Chapman, community / Westbury Civic Club.

Westbury High School Upgrades Coming in 2017

Part of Westbury High School will be replaced by HISD as part of the November 2012 Bond Referendum. Westbury High is in Group 4, which means that Planning and Design will begin in late 2015 and construction will begin in mid 2017.



When You Want The Job Done Right The First Time!

Since 1975

American SERVICES

With Exclusive

PATRIOT-BIT

Technology

Call Now:
713-782-2989

Leak Detection Experts



WWW.ASAMERICAN.COM

Hello My Name is
ROBERT

FOUNDATION REPAIR & PLUMBING SPECIALIST

- ❖ Exclusive Ameri-Link System
- ❖ Lifetime Transferable Warranty
- ❖ FHA/VA Approved
- ❖ Licensed & Fully Insured
- ❖ Warranties Available on Existing Piers



- ❖ City Permits & Inspections
- ❖ Hydrostatic Testing
- ❖ Sewer Reroutes
- ❖ Tunneling Experts
- ❖ Leak Detections
- ❖ Gas Leaks & Repair



SAVE \$100.00 OR 5% OFF
ANY FOUNDATION REPAIR OR CONCRETE WORK

NOT VALID WITH ANY OTHER OFFER
NEW CUSTOMER ONLY

PRESENT AT TIME OF SERVICE

BBB

Gold Star Member
MPL - 15997
BLUEPRINTS & DESIGN

SAVE \$50.00 OR 5% OFF
ANY FOUNDATION REPAIR

Call Today (713) 782-2989

NOT VALID WITH ANY OTHER OFFER
NEW CUSTOMER ONLY

PRESENT AT TIME OF SERVICE

"CALL TODAY SO I CAN GIVE YOU AN HONEST FREE ESTIMATE"



CONCRETE WORK Driveways, Patios, Etc....

Westbury Community Garden

According to our conversations with the Houston Housing Authority, nothing has been decided on the WCG property and they are still doing their due diligence. It is likely that they will come to the conclusion that building on this site would not be beneficial to the community. However, that means they will need to sell the property. To that end, Becky Edmondson and Cindy Chapman met with the Houston Parks Board to discuss ways to purchase the property. We will report more on this as soon as more is known. We are pleased to announce that we have firm pledges of \$11,250. It is likely that the property will appraise somewhere between \$350,000 and \$500,000.

In the meantime, the garden continues to flourish. We will be adding 25 new beds before the spring planting begins to satisfy

the waiting list. We will also be planting more fruit trees. Elsewhere in the Crier you will read about the Urban Harvest fruit tree sale, I encourage ALL of you to plant a fruit tree. It will bring you pleasure and good food!

The WCG has been touched by the outpouring of friendship and support that we've received from the community in recent months. We ask that you consider extending your friendship to include financial support for the garden.

Donations are tax-deductible and can be sent to the Westbury Civic Club Office at **5322 W. Bellfort, Suite 107, Houston, TX 77035**. Checks should be made payable to: **WAIC-WGC. Make a notation in the memo line - Westbury Community Garden.**

BEFORE the Community Garden....



AFTER the Community Garden....



Stay updated through the WCC website, www.westburycrier.com or the WCC Facebook page, Westbury Houston.

Check out the WCG website also at www.westburycommunitygarden.org

Help Support the Westbury Community Garden

Attached is my tax-deductible donation of \$ _____	Donations of any amount (small or large) are welcomed and appreciated!	
Name:		
GIVING CATEGORIES		
Address:	Friend of the Garden	\$50
	Contributor to the Garden	\$100
Mailing Address for Donation receipt (if different)	Sustainer of the Garden	\$250
	Sponsor of the Garden	\$500
	Steward of the Garden	\$1000+
<p>Checks should be made payable to WAIC – WGC. Send donations to the Westbury Civic Club, 5322 W. Bellfort St., Suite 107, Houston, TX 77035</p>		

**Happy New Year from the
Westbury Community Garden!**

Commercial ♦ Residential ♦ Auto Glass

DISTINCTIVE GLASS

Phone: (713)981-0200
 Fax: (713)981-4193
 Email: dist@clear.net

9541 Town Park Dr.
 Houston, TX 77036
www.distinctiveglassonline.com

**GRASS CUTTING AS
 LOW AS \$20
 (281)995-0179
 Westbury Lawn Maintenance**

“Working on Westbury” Day

Saturday December 8 was an amazing day for Westbury. Teams of volunteers met at three different locations to “Work on Westbury” and make it an even better place. Teams met at the Willow Waterhole, Westbury Community Garden and Westbury Park.

Westbury Community Garden

About two dozen gardeners spent Saturday morning on December 8 weeding, cleaning up, and putting the martin houses up for the winter.



Above two photos: Volunteers at Westbury Community Garden on Dec. 8

Westbury Park

A team of volunteers worked on both Dec 8 and Dec 15 to spread mulch around the newly planted trees from the November workday.



Above two photos: Volunteers at Westbury Park on Dec. 8

Willow Waterhole

Volunteers from Trees for Houston planted trees in a new “Tribute Grove” (see related article on page 21) at Willow Waterhole Conservation Reserve. The new trees were planted on the Gasmer side of the lake bounded by South Willow, Ricecrest, and Gasmer.



Home Improvement

Home Remodeling & Repair

713.825.2486

www.hillhomeimprovement.com

Bathroom Remodeling
Interior/Ext. Painting
Carpentry & Drywall
Decks & Fences
Patio Covers
Siding
Handyman Service

Bonded & Insured

**Great References
Great Rates**

Westbury Resident 



Vonnie Cobb Realtors, Inc.




Your Neighborhood Realtor for 40 Years!

Family owned and operated.
Pictured Vonnie Cobb and Shannon Cobb.

Call us today for your FREE Market Analysis!
713.664.1818



Professionalism with a Personal Touch

www.VonnieCobbRealtors.com • 4842 Beechnut • Houston, Texas 77096

Community Partner — Brays Oak Management District

In the November 2012 newsletter, President Becky Edmondson mentioned that community partners are a key element to creating stronger communities (per Scott Doyon of "Better! Cities & Towns"). The Westbury Civic Club works with many partners. This month we will talk about the Brays Oaks Management District (BOMD).

BOMD was created in May of 2005 by the Texas legislature. BOMD is funded by commercial property owners in the district in exchange for services and improvement projects, as documented in a Service Plan. Owners of single-family homes and condominiums do NOT pay any assessments.

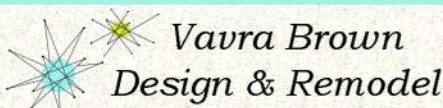
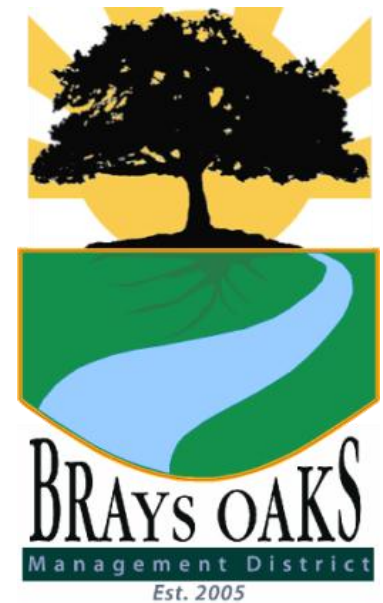
Effective January 1, 2013 the Westbury area is now included in the boundaries of BOMD and will receive services per the new BOMD Service Plan for years 2013-2028. Although the purpose of BOMD is to create improvements and services for commercial property owners, residents who live with the boundaries of BOMD will also indirectly benefit from these improvements. Here are some of the projects which we at the Westbury Civic Club think will be beneficial for Westbury residents.

Business and Economic Development: Encourage new development and redevelopment of commercial properties.



Public Safety – graffiti abatement, reduce crime in high-risk areas with mobile surveillance cameras, work with local law enforcement agencies, civil injunctions against commercial nuisance properties under County Attorney’s Community Protection program.

Environmental and Urban Design: Update Parks Master Plan, seek grants for parks and trails, collect trash on major thoroughfares, promote Hillcroft as a scenic parkway and discourage adding more lanes in residential areas, landscaping and trees, stormwater and drainage infrastructure advocacy.



713.256.4048

Vavra-Brown-Design.com

Full Warranty * Local Business/Resident

Full Home Remodeling
 Custom Kitchen & Bath
 Custom Cabinets, Built-ins
 Roof, Siding, Windows, Doors
 Electrical Upgrades & Repair
 Lowest Plumbing Rates Around!

*** WE BUY HOUSES ***



Urban Harvest and Fruit Trees

Hillcroft Esplanades Abundant with Fruit

I hope that some of you have visited the demonstration fruit tree grove on the Hillcroft esplanade (between West Bellfort and West Airport), and harvested some of the fruit when it was ripe. There were sweet Satsuma seedless tangerines and delicious figs. As these trees mature and grow larger in the coming years, there will be a huge amount of fruit just waiting for you to take one or two, leaving the rest for other Westbury residents.

Planting these trees a couple of years ago took just a few minutes. Watering them through a couple of dry summers took a little bit of effort, and the result has been worth the little amount of care. You can have fruit trees at your fingertips in your own yard with the same amount of ease of care.

Spotlight on the Eastside Farmer's Market

Every Saturday morning, rain or shine, from 8AM to Noon at 3100 Richmond, over 30 vendors sell their fresh grown vegetables and homemade goods to locals! Come out and enjoy live music, taste some deliciously prepared brunch items, and support local Houston restaurants and growers.

This is a family friendly farmer's market (no pets allowed) that everyone is sure to enjoy! Items for sale include locally grown vegetables and fruit, local honey, homemade breads, local meat, local eggs, homemade soaps, and more!

The best produce sells out quickly, so come early!

Urban Harvest Farmer's Markets

Wed. 11AM-1:30PM: City Hall Farmer's Market 901 Bagby

Sat. 8AM-Noon: Eastside Farmer's Market, 3100 Richmond

Sun. 10AM-1PM: Highland Village, 2720 Suffolk Dr.

Urban Harvest Fruit Tree Sale

Make a trip to the annual Urban Harvest fruit tree sale in January and purchase fruit trees for your own yard. Once again, there will be thousands of fruit trees of all kinds, each carefully selected to be appropriate for our climate. Westbury is an ideal community in which to grow fruit trees. Check www.urbanharvest.org to see the fruit tree offerings. The location of the sale this year is close by and convenient for Westbury residents.

Date: Saturday, January 19, 2013

Time: 9AM to 1PM or until sold out

Location: Houston Community College
5601 West Loop South





FARMERS

One stop for all your insurance needs

Auto-Home-Life-Renters-Condo-Boat-RV
Flood-Motorcycle-Business

Peter Zografos, Agent

5322 W. Bellfort #206
(713) 877- 8811

pzografos@farmersagent.com
www.farmersagent.com/pzografos




"Take an Hour of Your Time
to Change Your Life!"

Every
Tuesday
Night
@ 7pm


Each Location Independently
Owned and Operated

RSVP:
713 728 2300
Careers@waynemurray.net



Wayne Murray Properties

Ask about
our next
career night
webinar!



LEADING
REAL ESTATE
COMPANIES
OF THE WORLD

ALL TYPES IRRIGATION, INC.

OVER 30 YEARS EXPERIENCE

Design • Drainage • Installation • Service
Commercial • Residential



Emil Becker

T.I.L. #4415
D.L. #126891

Office: (713) 726-1636
Fax: (713) 726-8322
Cell: (713) 819-2872

"Tribute Grove"

The Willow Waterhole Wants YOUR Comments

What events would you like to see held at The Willow Waterhole? Please participate in the survey at www.wwgc.org to express your thoughts and comments.

Seeking Volunteers

The WWGC is looking for volunteers to serve as members of the Jazz Festival Committee. The Jazz Festival is scheduled for Sunday April 28, 2013.

The WWGC is also looking for a volunteer to serve as a Historian.

For more information about the WWGC, please visit our website at www.wwgc.org Use the Contact Us tab to let us know if you are interested in learning more about these volunteer opportunities.

Audubon Society Bird Survey

Saturday, September 15 at 7AM
Meet at The Gathering Place parking lot at 5310 S. Willow

Bring your binoculars and good shoes for walking.

Come prepared to see many species of birds!

"Tribute Grove" by Trees for Houston

What: The Willow Waterhole has been selected by Trees for Houston as a "Tribute Grove" planting site for 2012 and 2013. A Tribute Grove is a designated area where donors can donate trees in commemoration of special occasions, honor a friend or family member, or make a memorial gift. The number of trees planted in the grove is determined by the number of donations. Eighty volunteers participated in the initial tree planting event at Willow Waterhole on Saturday December 8.

Why: The Willow Waterhole features a series of wet-bottom detention lakes built by the Harris County Flood Control District to reduce flooding. Some mature trees on the site were saved; however, young trees were planted after the lakes were dug. Some of these young trees died during the recent drought. Additional trees are desired to enhance wildlife habitat and improve the scenic appearance.


Where: The Willow Waterhole is conveniently located to Westbury located just down Gasmer from Westbury High School. The first Tribute Grove of trees at the site has been planted alongside Gasmer (east of Westbury High School).

When: The spring planting season will continue until March 15, 2013. Additional trees will be planted in late fall 2013.

How Much: For a tax deductible donation of \$310, a 6 to 8ft. tall 15-gallon tree will be planted or for a donation of \$450, a 8 to 12ft. tall 30-gallon tree will be planted and maintained in a tribute groves. The donation pays for the tree, planting, and watering for two years by Trees for Houston. In lieu of a planted tree, a tax deductible donation of \$30 or more will help plant and maintain trees throughout Houston. An acknowledgment will be sent to each recipient.

Who: The Willow Waterhole Greenspace Conservancy (WWGC) is a 501c3 nonprofit organization of volunteers who work to improve amenities and are advocates on behalf of the Willow Waterhole Conservation Reserve. Trees for Houston is a 501c3 nonprofit organization dedicated to planting, protecting, and promoting trees in the Houston area.

For more information: Visit the website for the Willow Waterhole Greenspace Conservancy group at www.wwgc.org. A site map is available at www.wwgc.org/Park.html The website for Trees for Houston is www.treesforhouston.org



Bayou City Fencing Academy
4997 W. Bellfort

Fencing Instruction

Youth & Adults
*Ages 7-18

*All Skill Levels

Bayou City Fencing Academy
832-338-9808
myfencingacademy.com

NEXT PLANTING FOR TRIBUTE GROVE

Trees for Houston will be planting more trees at the Willow Waterhole Tribute Grove on Saturday, January 12th, from 9AM-11AM. If you have a group that would like to participate or if you would like to volunteer as an individual, call Jessica Keener at Trees for Houston at 713-840-8733. It's a great way to not only help out, but to learn the proper method to plant a tree.

WWW.WWGC.ORG

713.960.6222



MEYERLAND
WINDOWS & DOORS

CALL FOR A FREE ESTIMATE TODAY!

MIKE@MEYERLANDWINDOWS.COM
MEYERLANDWINDOWS.COM

JELD-WEN ACCREDITED BUSINESS

Neighborhood and Area News

Assessments for 2013: It's time to pay your dues!

Mandatory: Bills for those property owners in Parkwest 1 and Parkwest 2 who have mandatory assessments will be mailed in January and are due no later than February 1. Please contact the WCC office if you need to set up a payment plan for your mandatory assessments. For 2012, the mandatory assessment will be \$222, plus any additional donations which you would like to contribute. The increase is 3.6% based on the most recently published annual change (between 2010 and 2011) for US Urban Wage Earners.

Voluntary: All other Westbury residents, plus those in Parkwest 1 and Parkwest 2, who do not have mandatory assessments, are asked to support our Westbury neighborhood by voluntarily contributing to the services provided by the Westbury Civic Club. Since these contributions are voluntary, all contributions are welcome. The suggested contribution amount pays for WCC office operations, plus maintenance and beautification work coordinated by the WCC Greenspace Beautification Committee, plus our most expensive, but also most highly desired service, the supplemental security patrols by certified Texas peace officers hired via the Harris County Precinct 5 Constables Office. The suggested contribution amount is \$295, plus any additional donations. A contribution form is printed in every newsletter, so you can create your own payment plan or you can contact the WCC office to set up a payment plan. The dues form is on page 12.

Westbury is a neighborhood of homes and a community of neighbors. We thank each and every one of our neighbors for the financial support provided to keep Westbury safe and to maintain our place as a desirable and respected neighborhood. We truly are better for working together for Westbury.

Remodeling your home? Adding On?

Remember, please let the Westbury Civic Club office look over your proposed plans before you start construction. We want to avoid deed restriction violations before they happen, and without a doubt you would like to find out before wasting money on construction that later has to be modified or demolished. Obtaining a city construction permit requires your written acknowledgment that the plans comply with your deed restrictions.

Brays Bayou Association (BBA) Meeting

Mon., January 21 at 7:30 PM at The Gathering Place (5310 South Willow). The speaker will be Richard Cron, Director of Public Affairs for Houston Wilderness. Learn how Houston Wilderness is a bridge between a dynamic growing city and the wetlands, forests, prairies, and river systems that surround us. Both the Brays Bayou Association and the Willow Waterhole Greenspace Conservancy are conservation partners with Houston Wilderness.

GO TEXANS!



JACKIE ZEHL & TERESA LEWIS COLDWELL BANKER UNITED, REALTORS

 SOLD 5703 Burlinghall WESTBURY	 SOLD 5742 Wigton MAPLEWOOD SOUTH	 SOLD 5626 Mcknight WESTBURY	 SOLD 5855 Queensloch MAPLEWOOD SOUTH	 SOLD 6203 Rutherglenn MAPLEWOOD SOUTH	 AVAILABLE 5654 Lympar BARKLEY SQUARE
 AVAILABLE 9711 Braesmont MARILYN ESTATES	 AVAILABLE 10603 Carlota Ct WESTBURY	 AVAILABLE 4430 Hazelton MEDICAL CENTER AREA	 AVAILABLE 5515 Valkeith MARILYN ESTATES	 AVAILABLE 10010 Villa Lea BRAEBURN VALLEY	 SOLD '12 COMING SOON '13 RENOVATED 9507 Braewick MAPLEWOOD SOUTH

In 2013 We'll Help You Find Your Home To Be...

713-349-7221

jackiezehl@coldwellbanker.com



tlewis.houston@att.net

713-349-7227

Deck the Halls Parade

Deck the Halls Parade

Hundreds of Westbury residents enjoyed the 13th Annual Deck the Halls Parade in Westbury on Dec. 15. Parade goers were enchanted by several art cars, many beautiful Disney princesses, a dance bus, and many many more cars and floats. One resident was overheard saying "This was the best Deck the Halls parade ever!" WCC President Becky Edmondson rode with District K City CM Larry Green in the American convertible. It was a great parade and we can't wait for next year!



Clockwise from Top:
Beginning of parade; Westbury Mother's and Dad's Club; CM Larry Green and Becky Edmondson; Zebra car; Navy Art Car; Westbury residents enjoy the parade along Burlinghall



See your child achieve MORE at

St. Thomas More Parish School

5927 Wigton Dr.
Houston, Texas 77096

713.729.3434 www.stthomasmore-school.org



Preschool Programs (3 & 4 year olds)
Coeducational Classes (Grades 1 - 8)

All Day Kindergarten Program
Before/After School Care Available

Give your child all the extras
Enriched Academics ❖ Strong Athletics ❖ Introduction to the Fine Arts

LIMITED OPENINGS

Call **NOW** to arrange a private tour of our campus - 713.729.3434



* Westbury/Parkwest Specialist! *

32 yr
Westbury
Resident



Buy
Sell
Lease

Tony and Charlsey Porcarello

*"Who Better to Sell or Lease YOUR Home than
YOUR Westbury Neighbor!"*

Tony: 713-898-1546 tporcarello@yahoo.com

Charlsey: 713-898-1484 charlsev@swbell.net

Office Direct Line: 713-349-7263

Visit us on the Web @ www.porcarello.com



\$\$\$\$ Free Copy of Tax Return on CD \$\$\$\$\$
\$\$\$\$ Free Review of Prior Year Return \$\$\$\$\$

Schertz & Manning CPAs PLLC

Pam Schertz, CPA

Diana Manning, CPA

Small Business Accounting & Tax Services

5322 West Bellfort, Suite 211 Houston TX 77035

281-974-2096

ASTRO PLUMBING

"YOUR PROFESSIONAL PLUMBER"

BEST PRICES • FREE ESTIMATES • SENIOR DISCOUNT

CALL JOHNNY
Cell: 713-256-0017

JOHN LEWIS
M16312

ALL MAJOR CREDIT
CARDS ACCEPTED



Legal Eagle
CONTRACTORS
REMODELING
Since 1974

www.legaleaglecontractors.com

Houston's **Most Trusted** Contractors



Dan Bowden, Master Builder

713-723-8850

Come see our Showroom at
5008 Locust Street
at South Rice, Bellaire

Design and Build
Kitchens ★ Baths ★ Additions

Westbury's favorite
remodeler for over 25 years!



Senior-focused
Remodeling
is our Specialty



BryanCalvinSmith.com



Independent Insurance Agents & Brokers of America

TRAVELERS

Safeco Insurance™

Member of Liberty Mutual Group

713-723-9353