



# Westbury Crier

VOLUME 58, ISSUE 1

JANUARY 2012

## HIGHLIGHTS:

- Check out our TRASH FEATURE on pgs. 8 & 9
- WCC Board Meeting : January 18, 7PM @ Westbury High School
- MANDATORY WATER RESTRICTIONS STILL IN EFFECT
- BURN BAN LIFTED IN MOST CITY PARKS, see page 15
- January heavy trash is TREE WASTE ONLY

## INSIDE THIS ISSUE:

- Dues Form 3
- Platou Center Schedule 4
- Calendars 5
- Security Update 6
- TRASH FEATURE 8
- Urban Harvest 11
- 2012 Assessments 12
- District K staff 13
- Neighborhood News 15

## #49 Chimney Rock METRO Route in Jeopardy METRO Meeting at Westbury High School

METRO has announced a plan to discontinue the #49 Chimney Rock bus route, in addition to several other bus routes. Due to a public outcry during December hearings, METRO is coming to the Westbury area in January to discuss the issue, with a final decision to be announced in February. Since METRO desired an evening meeting time, the Westbury Civic Club has agreed to host the meeting at the beginning of our monthly public civic club meeting on January 18.

**Topic:** Future of METRO #49 bus route (from Westbury to Bellaire and Galleria area)

**Where:** Westbury High School - Lecture Room (Chimney Rock side of WHS)

**When:** Wednesday, January 18, at 7 PM

**Who:** Public is invited and encouraged to attend

Areas of concern for Westbury include: residents from the Westbury area who rely on this bus for transportation, students at WHS and Johnston Middle who ride this bus to and from school, college students connecting to University of Houston, riders going to the Westbury Place nursing home and The Gathering Place agency on S. Willow, and connectivity to a possible future METRO US90A light rail Westbury station.

Nine people spoke at the December 5<sup>th</sup> METRO hearing on behalf of the #49 bus, including Cindy Chapman - Westbury Director of Community Relations. Kim Page from The Gathering Place spoke on behalf of 20 daily users and brought a petition signed by 55 persons. The Westbury Civic Club, Johnston Middle School, the Westbury Area Improvement Corporation, and Westbury Place nursing home submitted written support for the #49 bus.

## CHECK OUT THE SPECIAL TRASH FEATURE ON PAGES 8 & 9



⇒ What is the difference between Junk Waste, Tree Waste, Yard Waste?

⇒ What can I take to the city's different recycling centers?

**Check out pages 8 and 9 for all the answers!**

**Fruit Tree Sale: see page 11 for details**

**New Line Dancing Class Mondays, See page 4**

Published by:  
Westbury Civic Club, Inc  
Editor: WCC Publication  
Committee  
Printing: Hutson Enterprises

## Westbury Civic Club Board of Directors

President	Becky Edmondson	wccpresident@westburycrier.com
Vice President	Marcia Hartman	wccvp@westburycrier.com
Secretary	Phyllis Frye	wccsecretary@westburycrier.com
Treasurer	Pamela Schertz	wcctreasurer@westburycrier.com

## Directors at Large

Communications	Melissa Denney	wcccommunications@westburycrier.com
Community Relations	Cindy Chapman	wcccommunityrelations@westburycrier.com
Deed Restrictions	VACANT	wccdeedrestrictions@westburycrier.com
Flood Control & Infrastructure	Ken Downey	wccflood@westburycrier.com
Greenspace Beautification	VACANT	wccmaintenance@westburycrier.com
Membership	Janie Schexnayder	wccmembership@westburycrier.com
Security	VACANT	wccsecurity@westburycrier.com
Volunteer Coordinator	VACANT	wccvolunteers@westburycrier.com

## Section Directors

Westbury 1	Sylvia Rendon	Westbury1@westburycrier.com
Westbury 2	VACANT	Westbury2@westburycrier.com
Westbury 3	Don Bryan	Westbury3E@westburycrier.com
Westbury 3	Ron Brown	Westbury3W@westburycrier.com
Westbury 4	VACANT	Westbury4E@westburycrier.com
Westbury 4	Vicki Eldridge	Westbury4W@westburycrier.com
Westbury 5	Virginia Livingston	Westbury5E@westburycrier.com
Westbury 5	VACANT	Westbury5W@westburycrier.com
Westbury South	Robert Capps	Westburysouth@westburycrier.com
Parkwest 1	William Grimsinger	Parkwest1@westburycrier.com
Parkwest 2	Peter Zografos	Parkwest2@westburycrier.com
Parkwest 3	Joe Niles	Parkwest3@westburycrier.com

## Westbury Civic Club Office

**Office Hours:** Monday—Thursday 9:30AM— 1:30PM\*, Closed Fridays  
**Address:** 5322 W Bellfort Ste 107 Houston, TX 77035  
**Phone:** 713-723-5437  
**Email:** Westburycc@sbcglobal.net  
 \*The office is closed on all major holidays, weekends (follows HISD calendar)  
**FREE NOTARY SERVICE IS AVAILABLE TO ALL WESTBURY RESIDENTS**

### USEFUL PHONE NUMBERS

**Westbury Area Patrol Constable Dispatch**  
**281-463-6666**

HPD Non-Emergency  
 713-884-3131

Power Outages (Centerpoint)  
 713-207-2222

Westbury HPD Storefront  
 713-726-7126

Platou Community Center  
 713-726-7107

Poison Control  
 1-800-764-7661

Street Light Repairs (Give pole number)  
 713-207-2222

District K Councilmember Larry Green  
 832-393-3016

District C Councilmember Ellen Cohen  
 832-393-3004

County Commissioner El Franco Lee  
 713-755-6111

### City of Houston 311 Hotline

**(for all Non-Emergency Issues)**

Forestry Department

Graffiti

Hazardous Waste Disposal

Heavy Trash

Neighborhood Protection

Parking Management

Recycling

School Crossing Light Repairs

Water and Sewer Repair

## CIVIC CLUB

## OFFICE HOURS

# Monday-Thursday

# 9:30AM-1:30PM

# HAPPY NEW YEAR!!!!

# President's Message

January! A time to look back and a time to look forward. There's a nice article on page 6 outlining our 2011 accomplishments. It was a good year. I cannot thank everyone enough for their support. The Civic Club Board works diligently and relentlessly supporting, promoting and lobbying on behalf of Westbury. Sometimes I think we are like that little boy, from the children's story, with his finger in the dike holding back the flood. Just when we think we are safe, something else comes up, the latest being METRO wanting to discontinue the Chimney Rock cross town bus. We've got to be vigilant! Please come to the meeting to show your support.

The good news is we are not alone. Thousands of you pay your dues, hundreds of you come forward during the year to volunteer your time and talents. Every dollar, every hour donated makes a difference.

The city elections are over and we have a new city council. In December, Council Member-elect Larry Green came to Westbury with his staff (who you can meet on the "Faces in the News" page) and met with me, Cindy Chapman, Dabney Kennedy and Rita Woodward. We spent two hours going over issues and talking about what is important to us. They came with maps and we were able to talk about Westbury streets being built with Rebuild Houston funds; we talked about economic development and the deplorable shape of the commercial property in the heart of Westbury and along Hillcroft. We talked about our schools and

their not receiving the HISD bond money that the schools north of Braeswood received. We talked about public safety. We talked about our parks needing upgrading and our community center. We talked about wanting ALL of Westbury to have single stream recycling. We talked about needing more from Neighborhood Protection. We talked about preserving our assets that make Westbury such a great place to live. Sometimes we spend so much time looking at the few things that are bad, we forget how good the rest is. I've heard more than one person I respect call Westbury the JEWEL of Southwest Houston. And that is good to hear!

January is also resolution time. If you are planning to eat more healthfully, the Urban Harvest fruit tree sale is January 14th. Plant a tree or two; you will not be disappointed. Visit an Urban Harvest Market or take a class at the Westbury Community Garden and learn how to grow your own. If you are planning to be greener in 2012, tear out the special feature on trash facts. If you are planning to become more involved, put the third Wednesday of the month on your calendar and come to a civic club meeting. If you are planning to increase your net worth, send in your Civic Club dues to protect your home's value.

Thanks again to all of you for being good neighbors and for making Westbury such a great place to live.

Becky Edmondson

# HAPPY NEW YEAR!!!

**WCC Board Meeting  
Wednesday, January 18  
7PM-9PM  
Westbury High School**

## 2012 Westbury Civic Club Dues

Name(s) \_\_\_\_\_  
 Address \_\_\_\_\_  
 Home Phone \_\_\_\_\_ Cell \_\_\_\_\_ Work \_\_\_\_\_  
 E-mail \_\_\_\_\_

**MANDATORY  
DUES  
PW 1 and PW2  
see Page 12**

**Make checks payable to:  
Westbury Civic Club, Inc.**

**Mail to:  
P.O. Box 975182  
Dallas, TX 75397-5182**

**Please send this form  
with your payment**

**Online payment:  
www.westburycrier.com  
go to paypal.com**

Sending multiple payments?  
Circle your payment choice

2 payment of \$147.50

3 payments of 98.34

\*\*Call the office for more payment options

Westbury Civic Club Membership	\$40	\$
Greenspace Beautification	\$25	\$
Westbury Area Patrol	\$230	\$
<b>Subtotal</b>	<b>\$295</b>	<b>\$</b>
<b>Additional Contributions:</b>		
Westbury Civic Club		\$
Greenspace Beautification		\$
Westbury Area Patrol		\$
Westbury HPD Storefront		\$
<b>Total</b>		<b>\$</b>

## Thank You Westbury!

We greatly appreciate the residents who used the past *CRIER* issues to submit their 2011 dues. Here's a chance to submit your 2012 dues and help pay for our much needed Westbury Area Patrol.

# Platou Community Center

11655 Chimney Rock

Supervisor: Chris Allen 713-726-7107 [Chris.allen@houstontx.net](mailto:Chris.allen@houstontx.net)

Monday-Thursday 12—8PM ; Friday 12-6PM

Open in the morning for scheduled classes

## JANUARY IS EXERCISE MONTH AT THE PLATOU CENTER

### New in January:

#### LINE DANCING CLASS

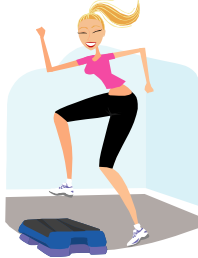
Begins on Monday, January 9  
from 1 to 2:30 PM.

For more information or to  
sign up call Chris at  
713-726-7107.



#### Aerobics with Chris

Tuesday and Thursday, 6:30-7:30PM  
Contact Chris Allen to register or come  
preview the class



#### Free Ballroom Dance Lessons

Wednesdays, 6:30-7:30PM  
Call Marilyn at 713-729-9425  
A beginner class will form soon



#### Stretching Class

Monday, Wed., Friday, 9-9:45AM  
Contact Chris Allen 713-726-7107

#### Westbury Quilting Bee

Tuesday, 12PM - 3PM  
Contact Janie at 713-721-5526

#### Monthly Meetings

Westbury Community Garden  
Meeting  
2nd Monday 6:15-7:45PM

#### TOPS: Take Off Pounds Sensibly

Tuesdays, 5:45 to 7PM  
Weight loss support group  
Contact Dorothy at 713-723-4441 or  
Naomi at 713-988-2233

#### Games

Wednesday, 10 AM to 12 noon  
Contact Wally at 713-729-9310

#### Portable Projects

Thursday, 9:30- 11:30 AM  
Contact Hazel at 713-729-4568

## We Sell More Because We Do More!

LOCAL &  
NATIONAL  
COVERAGE



JACKIE MURRAY  
Cell: (713) 825-9179

OVER 35+ YRS  
COMBINED  
EXPERIENCE

[jackiem@waynemurray.net](mailto:jackiem@waynemurray.net)



Wayne Murray Properties  
713-728-2300



KENDYL MAURER  
Cell: (281) 904-8199

[kendylm@waynemurray.net](mailto:kendylm@waynemurray.net)

NEIGHBORHOOD  
SPECIALIST  
Area Residents

SPECIALIZING  
IN RESIDENTIAL  
+ NEW HOMES

Westbury, Parkwest, and surrounding areas



51197 Rampart  
3 bed/2 bath  
\$99,500



5635 Wigton  
3 bed/2 bath  
Another One Sold!



5219 Hummingbird  
3 bed/2 bath  
\$219,900



5171 Kingfisher  
3 bed/2 bath  
\$265,900



11122 Endicott  
3 bed/2 bath  
\$229,000

Call us Information on Featured Listings ♦ [www.waynemurray.net](http://www.waynemurray.net)

# What's Happening in Westbury

## January 2012 Events & Meetings Calendar

Jan. 2-3	<b>WCC Office Closed</b> Normal operating hours of 9:30-1:30PM Mon.-Thurs. resumes on January 4
Mon 9	<b>Westbury Community Garden Meeting 6:15-7:45PM</b> Platou Center—11655 Chimney Rock Open to the public
Sat 14	<b>Urban Harvest Fruit Tree Sale 9AM-1PM or until sold out</b> University of Houston Robertson Football Stadium Rain or Shine
Mon 16	<b>Brays Bayou Association Meeting 7:30PM</b> The Gathering Place—5310 S. Willow
Mon 16	<b>WCC Office Closed</b> Martin Luther King Day
Wed 18	<b>WCC Board Meeting 7PM- 9PM</b> Westbury High School - 10911 Chimney Rock METRO Meeting about #49 Chimney Rock Bus Route
Sat 21	<b>Willow Waterhole Monthly Audubon Society Bird Survey 8AM</b> Meet at The Gathering Place parking lot at 5310 S. Willow
Tues 24	<b>SW PIP (Police Positive Interaction Program) Meeting 7PM</b> Aramco Building—9009 W. Loop South

### Important Trash & Recycling Information

- Trash cans need to be out on curb by 7AM Thursday
- Trash cans must be removed by 10PM Thursday
- YARD WASTE is not considered tree waste and will not be collected with heavy trash. It is collected on Westbury's regular Thursday trash day as long as it is in the correct recyclable bags

Want to know the difference between Tree Waste, Yard Waste, Heavy Trash, ETC?  
See pages 8 & 9

## January 2012 Heavy Trash & Recycling Calendar

Thurs 12	Curbside Recycling All of Westbury
Tues 17	Heavy Trash— TREE WASTE ONLY (South of W. Bellfort)
Wed 18	Heavy Trash—TREE WASTE ONLY (North of W. Bellfort)
Thurs 26	Curbside Recycling All of Westbury
FEB.	Heavy Trash—JUNK WASTE

**\*\*\* ATTENTION \*\*\***  
**\*\*\* HOMEOWNERS \*\*\***  
IF YOU HAVE MULTIPLE TRASH CANS, PLEASE MAKE SURE THEY ARE AT LEAST 3 FEET APART

713.960.6222

MEYERLAND  
WINDOWS & DOORS

CALL FOR A  
FREE ESTIMATE  
TODAY!

MIKE@MEYERLANDWINDOWS.COM  
MEYERLANDWINDOWS.COM

FAINMOUS  
BBQ  
J&Kcatering

10400 South Post Oak #E  
Houston, TX 77035  
Phone: 713-728-9663

Serving: Ribs • Chicken • Pulled Pork • Beef Brisket • Sausage  
Potato Salad • Baked Beans • Slaw • Desserts  
And More... in the Tennessee Tradition!



FARMERS

**One stop for all your insurance needs**

Auto-Home-Life-Renters-Condo-Boat-RV  
Flood-Motorcycle-Business

Peter Zografos

5322 W. Bellfort #206

(713) 877- 8811

pzografos@farmersagent.com

www.farmersagent.com/pzografos



Meadows  
Preschool

Creative, age appropriate  
learning experiences

Babies—Pre K.

713.255.7025

cwehmeyer@wmbc.org



Meadows Preschool

The Little School with a Big Heart

4300 W. Bellfort

Houston, TX 77035

# 2011 WCC Accomplishments

## Improved Communications

We updated our website ([westburycrier.com](http://westburycrier.com)) and added a Facebook page (Westbury Houston). Our monthly newsletter now has some pages in color, and we have added more photographs in each edition, plus other layout changes. We modified the bylaws to add a Director of Communications to the WCC Board of Directors.

## Security and Neighborhood Protection

We pay for supplemental security patrols via the Harris County Precinct 5 Constables office and will continue the constable security patrol in 2012. We will be working in 2012 to enhance the financial stability of our security patrol and other services, with preliminary preparations started in 2011.

We work with the city Legal Department to enforce deed restrictions. During 2011, Neighborhood Protection inspection was moved from the Police Department to the new Department of Neighborhoods (DoN). Starting in October 2011, we now meet monthly with DoN inspectors during the Westbury SuperNeighborhood meeting to discuss issues such as junk vehicles, high grass, and problem properties.

## Advocacy on Behalf of Westbury

What a crazy year 2011 has been. Every year something unanticipated pops up which could be detrimental to Westbury. This year the Westbury Civic Club fought to keep our local Platou Community Center open by sponsoring an online petition, writing letters, and speaking at city hearings. We also sent representatives to speak at city hearings related to: city council redistricting and unsafe building conditions at 12540 Hillcroft. We wrote letters expressing concern about proposed city ordinances related to planning and land use.

We held multiple meetings with METRO and hosted METRO at several WCC meetings related to a future US90A light rail track which might go through Westbury near South Main /US90A and affect Westbury homeowners. In December, we spoke on behalf of the METRO Chimney Rock bus route # 49 at a METRO hearing and we also contacted area schools and organizations which would be affected by closing this bus route so that they could also contact METRO.

We stayed in frequent contact with District C Council Member (CM) Anne Clutterbuck and her office during the year. Additionally, we met multiple times with incoming District K City Council Member (CM) Larry Green and discussed our issues with him. We sent representatives to several Candidate Forums and Breakfasts to keep our visibility up.

Each year we submit requests to the city related to Parks and Public Works. The upgraded light signals at Hillcroft and West Airport are a result of a requests made several years ago. We have reviewed the city Public Works street repair priority list with CM Green and have suggested several key streets which require repairs.

We send representatives to many different organizations to represent Westbury and we encourage our residents and our directors to be active in community and civic organizations. Some of the organizations we are active in include: Southwest Houston 2000, Westbury Area Improvement Corporation, Brays Oak Management District, Willow Water Greenspace Conservancy and SuperNeighborhood Alliance.

## Maintenance and Beautification of our Greenspaces

The WCC received a grant from the city to partially fund the cost of modifying the landscaping at most of our Westbury subdivision signs. This project was honored by recognition from Keep Houston Beautiful. The WCC also plants seasonal color at several prominent locations along Westbury esplanades.

We planted trees at Westbury Park, Hager Park, along Burdine between W. Bellfort and Chimney Rock, and along Dunlap and Greencraig near the Westbury Community Garden. We had made an agreement with Trees for Houston that they would water the trees if we obtained and planted the trees. Despite the drought, many of the trees have managed to stay alive.

The city has increased the interval between mowing on our esplanades, which will continue to be challenging. Many years ago, the WCC paid for supplemental mowing for our esplanades and we will study the situation to consider this option in the future. The WCC does mow and collect trash at several locations areas on a routine basis, including the intersection of W. Bellfort at Chimney Rock and specific places where county flood control easements adjoin our major thoroughfares. The WCC also periodically pays to clean up problem areas south of West Airport.

# Plumbco 713-725-5025

MPL 36609

***For all your plumbing installations and repairs.***

**Gary Bloch • [www.PlumbcoHouston.com](http://www.PlumbcoHouston.com)**

# Security / Crime

## Crime Statistics for Westbury Super Neighborhood 37 \* 30 days preceding December 20, 2011

	Single-Family Residential	Apartment/ Condominium	Commercial Property	Public Areas	Totals
Burglary	11	4	2	1	18
Theft	15	4	5	2	26
Auto Theft	1	2	0	0	3
Robbery	0	1	3	1	5
Assault	0	3	1	1	5
Rape	0	0	0	0	0
Murder	0	0	0	0	0
<b>TOTAL</b>	<b>27</b>	<b>14</b>	<b>11</b>	<b>5</b>	<b>57</b>

Single Family Residential Crime Locations (30 days preceding 12/20)

Block	Street	Crime
5800	Arboles	Theft
11000	Ashcroft	Theft
12000	Atwell	Burglary
5600	Benning	Burglary
11700	Braewick	Theft
5300	Briarbend	Burglary
10600	Carlota Crt	Burglary
5700	Cartagena	Burglary
5800	Duxbury	Burglary
5900	Ettrick	Burglary
6000	Ettrick	Burglary
5800	Ettrick x2	Theft
5800	Farwell	Burglary
5800	Fontenelle	Burglary
5700	Fontenelle	Theft
5500	Fontenelle	Theft
5200	Kingfisher	Auto Theft
12300	Landsdowne	Theft
5900	Lattimer	Theft
12300	Mullins	Theft
5100	Redstart	Theft
5100	Sanford	Theft
5000	Stillbrooke	Theft
5700	Southminster	Theft

\*Area bounded by: S. Post Oak, US 90/S. Main, utility easement north of Willowbend and drainage bayou west of Braewick

**Westbury Area Patrol Constable Dispatch 281-463-6666**

**HPD Westbury Storefront 713-726-7126**

**HPD Non-Emergency 713-884-3131**

**Water Heaters:**  
Regular & Tankless

Disposals

Water Lines

Gas Lines

Drain Cleaning

Under Slab Repairs

Re-route kitchen & laundry pipes

## ASTRO PLUMBING

Full Service Plumbing and Repair Specialist

### 713-256-0017

★ JOHNNY LEWIS ★

WESTBURY RESIDENT

**New Sewer Lines**

Hydrostatic Testing

Remodeling & Repairs

Sinks

Faucets

New Drains under Bathroom

M16312 ★ Since 1985

★ Senior Discounts

★ All Major Credit Cards

★ Fully Insured

## Ralph Rieger, CPA

You earned it... we help you keep it!

- Personal & Business Taxes
- Audit Assistance Guarantee
- Accounting/Bookkeeper
- Maximum Deductions

Register for Quickbooks Seminars: [www.llu.com](http://www.llu.com)  
Introductory Classes: May 16, 6:15-9:30  
Intermediate Classes: May 17, 6:15-9:30

**We Give Personal Attention to Every Client**  
[www.RiegerCPA.com](http://www.RiegerCPA.com)

11415 Chimney Rock, Suite 201713.729.1122

**"Take an Hour of Your Time to Change Your Life!"**

Every Tuesday Night @ 7pm

RSVP: 713 728 2300  
[Careers@waynemurray.net](mailto:Careers@waynemurray.net)

Ask about our next career night webinar!

Each Location Independently Owned and Operated

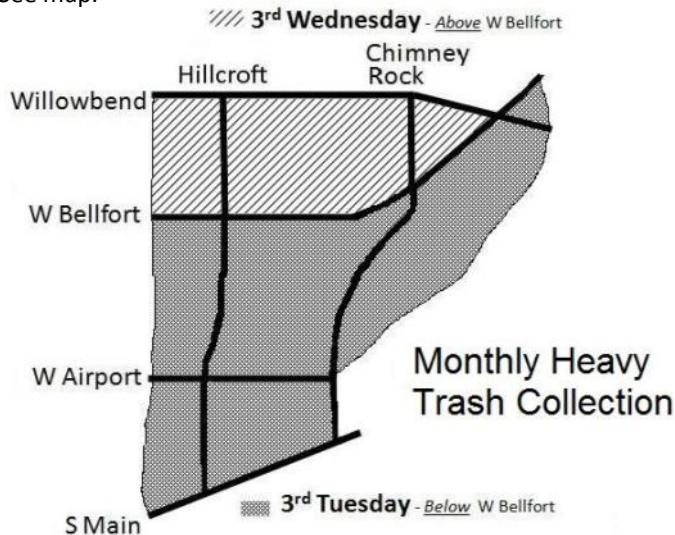
# TRASH EXPLAINED...

## 2012 Monthly "Junk Waste" or "Tree Waste"

Unlike many cities, the City of Houston provides residents with FREE curbside monthly heavy trash collection, alternating "TREE WASTE" collection months with "JUNK WASTE" collection months. The collection cycle is the same every year, as shown below.

TREE WASTE MONTHS	JUNK WASTE MONTHS
January	February
March	April
May	June
July	August
September	October
November	December

We all want Westbury to look as attractive as possible, so it is important to pay attention to when you may legally place your heavy trash at the curb. If you are not sure, you may call the WCC office or "like" the WCC Facebook page to get trash updates. Your collection date will depend on where you live in Westbury. Those who live "above" W. Bellfort will have collection on the third Wednesday, while those who live "below" W. Bellfort will have collection on the third Tuesday. See map.



## What is "Junk Waste"?

"Junk Waste" includes furniture, appliances, lumber, fencing, and other bulky items (including tree waste, but the tree waste would then be sent to landfill rather than mulched). The city will NOT collect bagged yard waste placed in improper bags during a Junk Waste month.



## What is "Tree Waste"?

"Tree Waste" consists of tree limbs, shrubbery limbs, or branches of trees and shrubs. If the Tree Waste has other types of materials mixed in with it, then it is no longer Tree Waste. Lumber, fencing and similar materials are NOT considered Tree Waste. During a Tree Waste month, only Tree Waste materials will be collected by the city.



## What is "Yard Waste"?

"Yard Waste" consists of leaves, grass clippings, small yard trimmings or branches. Yard Waste must be in a city-approved bag, or small branches bundled (tied) into a pile less than 4 feet long, less than 18 inches in diameter, and less than 50 pounds in weight. "Yard Waste" is picked up every Thursday.



## What is "Recyclable"?

Steel or aluminum cans. Paper. Certain plastics, not # 6. Glass is NOT allowed in the small recyclable containers. Glass IS allowed in the large recyclable bins. Recycling is picked up every other Thursday.

## What goes in the large black trash bins?

Household garbage such as personal trash and food preparation waste are to be placed in the large black trash bins. Household garbage day is Thursday. Place bin at curb after 6 PM Wednesday evening. Remove from curb by 10 PM Thursday night. No yard waste, dead animals, household hazardous waste, or electronics. **Too much trash this week?** Buy "tags for bags" from Kroger or Fiesta so city will pick up your extra bags of trash. Cost is \$ 2 per tag, plus tax.

**RED**  
**RIVER CONTRACTING**

**713-665-9500**

**WWW.REDRIVERTRADES.COM**



## Concrete Contractors

Driveways - Foundations - Patios - Walks  
Pavers - Stained Concrete - Breakout  
Residential & Commercial

*Serving The Westbury Area for 5 Years*

Texas Registered Builder #44786

Bonded & Insured



**RRC**



# TRASH EXPLAINED...

## Environmental Service Center – South

(Recycle and Household Hazardous Waste)

**11500 South Post Oak - between Gasmer and South Main**

The Environmental Service Center accepts household hazardous waste such as anti-freeze, batteries, fuel, oil, paint, paint thinner, pesticides, herbicides and household cleaners. Residential electronic scrap items will also be accepted (monitors, televisions, printers, keyboards, mice, scanners, fax machines, telephone handsets, VCRs, CPUs, cellular phones and other small consumer electronics). These items should not be placed on the curb with or in your container for collection with garbage or heavy trash pick-up. The center is open every Tues. and Wed. from 9AM to 3PM and the 2nd Saturday of the month from 9 AM- 1 PM.



Items that can be taken to the Environmental Service Center

### Christmas Tree Recycling

The City of Houston encourages residents to recycle Christmas trees. The recycled trees will be converted into mulch, which will help save landfill space and help preserve the environment.

**Trees WITHOUT Artificial Snow:** Please remove tinsel, lights, ornaments, plastic tree stands and plastic water bowls from the trees. Home Collection: In Westbury, these trees will be collected for recycling by the city during the January "Tree Waste Heavy Trash" pickup days. They may be placed at the curb starting at Friday night on January 13, 2012, for collection on either January 17 or 18, depending on where you live in Westbury. Trees for recycling may be taken to our Southwest Neighborhood Depository at 10785 Southwest Freeway.

**Trees WITH artificial snow (flocked):** These trees will NOT be accepted for recycling; they will be picked up on the neighborhood's scheduled "Junk Waste Heavy Trash" day in February.

### Trash Violations

Violation of any provision of the solid waste ordinance is punishable upon first conviction by a fine of no less than \$50 nor more than \$2,000. Each subsequent conviction is punishable by a fine of no less than \$250 nor more than \$2,000. Each day that any violation continues may be punishable as a separate offense. **To report a violation or to file a complaint, call 311.** Solid Waste Management Department Supervisors can write citations.

### Southwest Neighborhood Depository and Recycling Center (for Heavy Trash Drop-off)

10785 Southwest Freeway Houston, TX 77074

Phone: 713.541.1953

This facility accepts Junk Waste, Tree Waste and Recyclables at no additional charge to City of Houston residents. Citizens may use the depositories four times per month. You must provide a Texas Driver's License or ID and a current utility bill or city property tax receipt. **The depositories will accept the following items:** Furniture, Tree limbs, Stoves, Refrigerators, etc., 10 auto tires (Rims Not Accepted) Open Wednesday – Sunday (except January 1 and 2) from 9AM to 6 PM.

**ALL TYPES IRRIGATION, INC.**  
OVER 30 YEARS EXPERIENCE  
Design • Drainage • Installation • Service  
Commercial • Residential  
**Emil Becker**  
T.I.L. #4415  
D.L. #126891  
Office: (713) 726-1636  
Fax: (713) 726-8322  
Cell: (713) 819-2872

**Hill Home Improvement**  
**Handyman Services**  
**Home Remodeling**  
Carpentry • Painting • Drywall • Decks • Fences  
**713.825.2486**  
[www.hillhomeimprovement.com](http://www.hillhomeimprovement.com)  
Great References & Great Rates  

# Free Market Analysis

If you are thinking of selling your home or want to know the market value of your property, call **Larry Mercer** for a free Market Analysis.

## 713-826-7274

With 30 years of experience in the Houston real estate market, he will get the job done.

You may contact me by email at:

**Lmercer@flash.net**

Or visit my web site at:

**www.Larrymercer.net**



Neighborhood  
Specialist

# Fruit Tree Sale & Farmer's Market

## Urban Harvest Fruit Tree Sale

Have you been to the Westbury Community Garden recently to see what a 1½-year-old fruit tree orchard looks like? I can tell you it is truly a miracle how quickly fruit trees grow from little tots to healthy productive teenagers. The fig trees are already 6' tall and producing delicious fruit. Oranges, tangerines, lemons, grapefruit and kumquats all put on fruit in the spring that were removed to allow the tree to grow, and they did grow to be bushy evergreen 4' to 5' trees, ready to put on lots of fruit in the coming spring. Pomegranate, pears and mulberry are also doing well, as is the large blackberry patch, which will produce many gallons of blackberries in the spring.

Maybe you don't want to have 25 fruit trees and 60 blackberry plants in your yard, but you could have a few fruit trees that will easily satisfy your taste buds and make you yearn for more. All you need is about half day sun and 8 to 10 square feet for a good sized citrus, pear, persimmon or pomegranate, and much less space for grapes, blueberries and blackberries. Of course, fig trees, which are the easiest to care for, take up a little more room and like full day sun.

Get on the bandwagon with a tree or two. Choose the ones that produce fruit you like to eat. How about a Clementine tangerine or even better tasting varieties? Join others at the Urban Harvest fruit tree sale, a one-day event, where you will find every fruit that can be grown in Houston. Check the Urban Harvest website [urbanharvest.org](http://urbanharvest.org) for citrus tasting and fruit tree sale information.

## Urban Harvest Fruit Tree Sale – rain or shine

**Date:** January 14, 2012  
**Time:** 9 AM – 1 PM or until sold out

## Urban Harvest's Highland Village Farmers Market



Urban Harvest  
FARMERS MARKET

**Sundays, 10am-1pm**

**2720 Suffolk Street**, behind JoS. A. Bank off of Westheimer in the Highland Village Shopping Center. This is seven (7) miles from Westbury.

**ABOUT THE MARKET:** The Urban Harvest Farmers Market at Highland Village is open every Sunday and offers brunch items, locally-produced vegetables, fruits and farm products. The market supports family farms and boosts the local economy, and all items are grown or produced within a 180 mile radius of downtown Houston. Among the items available for sale are rainbow chard, patty pan squash, a variety of greens, fresh herbs, citrus, tomatoes, goat milk soaps, grass fed beef, Texas olive oil, fresh bread, coffee, and ready to eat breakfast items. Shoppers can enjoy live entertainment, monthly cooking demos by local chefs, and kids cooking classes.

**ABOUT URBAN HARVEST:** Urban Harvest promotes healthy communities, sound nutrition and respect for the environment by educating children and adults and facilitating harvest and habitat gardens. For more information,

<b>WESTBURY &amp; surrounding area</b>		<b>JACKIE ZEHL &amp; TERESA LEWIS</b> 713.349.7221 <a href="mailto:jackiezehl@coldwellbanker.com">jackiezehl@coldwellbanker.com</a>		<b>COLDWELL BANKER</b> UNITED, REALTORS	
 \$290's	 \$240's	 \$220's	 \$219,000		
<b>6102 BAYOU BRIDGE-MAPLEWOOD S. 4/2.5/2 Remodl+Granite+CustomCbnts</b> <b>6207 QUEENSLOCH - MAPLEWOOD S. 3/3/2 Gmm w/ Wet Bar &amp; Pella Windws+ ProfRemodeled+Hrdwds+TileFlrs+ HrdwdsThruout+SSGasCooktop+Finch +SSAppl+CathedrlCeilng+RenovtdBths</b> <b>5602 McKNIGHT - WESTBURY 3/2/2 11110 Atwell - WESTBURY 3/2/2</b> <b>Bltins+Updtd+Corian+EnlrgdMstrBth Granite+SSAppl+New Windws Drs+UpdtdMstrShowr+NewWindws</b>					
 \$200's	 \$160's	 \$160's	 \$97,750		
<b>5007 WILLOWBEND - WESTBURY 3/2/2 5218 BRIARBEND - WESTBURY 3/2/2 7655 S BRAESWOOD #44 3/2.5 8209 ALBACORE-ROBINDELL 3/1/2</b> <b>3/2/2 ProfRemodeled+Hrdwds+TileFlrs Study+HrdwdsThruoutFormals&amp;Bdrm StylishRemodl+Study+SSAppl+Custm Hrdwds+CrwnMldng+FreshPaint+SS +GraniteThruout+SSAppl+CustmCbntry Wing+RaisedCeiling+Pool+KollerElem Cabntry+Granite+WlkinPntry+UpdtdBths ElectRange+PlantationShuttrs+LrgBckyrd</b>					
5415 VALKEITH 5671 SYLMAR	5609 VALERIE 4815 SAXON	8311 QUEBEC 5526 HUMMINGBIRD	5931 VALKEITH 8307 QUEBEC	5735 McKNIGHT 5722 DARNELL	
COLDWELL BANKER UNITED, REALTORS 5111 BELLAIRE BLVD. BELLAIRE, TEXAS 77401					
AD BY DEJA LAND					

# 2012 Assessments and Dues

## Assessments for 2012

**Mandatory:** Bills for those property owners in Parkwest 1 and Parkwest 2 who have mandatory assessments will be mailed in January and are due no later than February 1. Please contact the WCC office if you need to set up a payment plan for your mandatory assessments. For 2012, the mandatory assessment will be \$214, plus any additional donations which you would like to contribute. The increase is 2.1% based on the most recently published annual change (between 2009 and 2010) for US Urban Wage Earners.

**Voluntary:** All other Westbury residents, plus those in Parkwest 1 and Parkwest 2 who do not have mandatory assessments, are asked to support our Westbury neighborhood by voluntarily contributing. Since these contributions are voluntary, all contributions of any size are welcome. The suggested contribution amount pays for WCC office operations, plus maintenance and beautification work coordinated by the WCC Greenspace Beautification Committee, plus our most expensive, but also most highly desired service, the supplemental security patrols by Harris County Precinct 5 Constables Office. The suggested contribution amount is \$295, plus any additional donations. A contribution form is printed in every newsletter, please contact the WCC office to set up an additional payment plan if desired.

**Westbury is a neighborhood of homes and a community of neighbors. We thank each and every one of our neighbors for the financial support provided to keep Westbury safe and to maintain our place as a desirable and respected neighborhood. We truly are better for working together for Westbury.**

## Deed Restriction Revision for 2012

In 2012, residents of Westbury 1 and 2 will be at the forefront of an initiative to move Westbury toward more stable finances, especially for our most expensive program – the Westbury Area Patrol provided by certified peace officers (constables) from the Harris County Precinct 5 Constables office.

Volunteers will start seeking signatures to change the deed restrictions for Westbury 1 and 2. Every signature is important and a majority of property owners in these sections need to sign the forms. If more than one owner exists for a property, then the volunteers will try to obtain as many signatures as possible for that property, since each lot currently may have more than one vote.

Here is a summary of the proposed changes. Details will be posted on the Westbury Civic Club website.

- ⇒ grandfathered mandatory assessments – will NOT affect current homeowners; only owners who purchase a home after the amendment goes into effect will be subject to mandatory assessments
- ⇒ One vote per lot - for future deed restriction modifications
- ⇒ WCC – is named as the entity to collect and spend the assessments

## Questions and Answers

**Q: Didn't I already sign to change Westbury 2 deed restrictions?**

**A:** Some people in Westbury 2 signed an earlier version; however, due to the many changes by the State Legislature in 2011, the wording of the legal document required numerous modifications. Therefore, the signature process must begin anew with the new wording.

**Q: This is an important issue for me. How do I volunteer to help?**

**A:** Contact the WCC office to volunteer.

**Q: I am confused by this "grandfathering" stuff. Please explain.**

**A:** "Grandfathering" means that existing property owners would not be affected by the revised deed restrictions requiring mandatory assessments. Only new property owners, those who acquired the property after the effective date, would be affected by the mandatory assessments.

**Q: Why does the WCC need so much money?**

**A:** Supplementary security patrols by Harris County Precinct 5 Constables are expensive and must be contracted in advance for an entire year at a time. The WCC did not receive sufficient money in 2011 to pay for the popular constable security patrol, so the WCC had to take money from the security reserves. In the long-run, the WCC cannot afford to do this without entirely depleting the security reserves. In addition to maintaining our existing patrol deputies, we would like to increase the number of patrols in Westbury. Three constables do not provide 24/7/365 coverage. Furthermore, as WCC income has declined over the years relative to inflation, the WCC has reduced office hours. The WCC would like to serve our residents better by increasing office services. Additionally, the WCC budgets funds to maintain select esplanades, watering, and planting. Due to the ongoing drought, the WCC has been forced to hire contractors to water in order save our young trees and landscaping. This is a huge expense.

**BECAUSE  
THE WORDS  
'SIGNED CONTRACT'  
HAVE SUCH  
A NICE  
RING TO THEM.**

Westbury is in demand!  
Curious what your home is worth?

[www.brockandfoster.com](http://www.brockandfoster.com) (713) 272-2000  
[facebook.com/brockandfoster](https://www.facebook.com/brockandfoster) @susanforreal

*Brock and Foster*  

RESIDENTIAL REAL ESTATE BROKERAGE

# The New District K staff



## Donald Perkins— Chief of Staff

Perkins was previously a Planner Leader for Community Sustainability in the Planning Department and has also worked at METRO. He is a board member for SPARK (the nonprofit School Park Program, which builds parks on public school grounds). In his work with the Planning Department, Perkins has worked closely with the Westbury community over the years and is very familiar with our issues, as well as community issues across Houston. He was honored earlier this year by a Houston City Council Proclamation declaring “Donald Perkins Day” on July 12, 2011 for his work on behalf of Houston communities. He lives in southwest Houston.

## Barbara Hite—Community Liasion

Hite is the primary contact for communities north of US90A in District K, including Westbury. Hite has been so well-regarded for her effectiveness in solving constituent problems that she was hired by our past, term-limited CM, Anne Clutterbuck, after CM Mark Goldberg left office. She will continue working for southwest Houston by joining the staff of CM Larry Green. Hite is immediate past president of the Houston Citizens Police Academy Alumni Association, president of the Braeburn Storefront Citizens Advisory Council, a member of the HPD Awards Committee and is active with her homeowners association in southwest Houston.



## Claude Foster— Community Liasion

Foster is the primary contact for communities south of US90A in District K. Foster worked closely with CM Larry Green’s election campaign. Although we don’t know him well now, we look forward



# WELCOME NEW DISTRICT K STAFF!

\*AT PRESS TIME, THE NEW PHONE NUMBERS FOR DISTRICT K HAD NOT BEEN PUBLISHED, PLEASE CONTACT THE WCC OFFICE

## Vonnie Cobb Realtors, Inc.



*Your  
Neighborhood  
Realtor for  
40 Years!*

Family owned and operated.  
Pictured Vonnie Cobb and  
Shannon Cobb.

**Call us today for your  
FREE Market Analysis!  
713.664.1818**



*Professionalism with a Personal Touch*

www.VonnieCobbRealtors.com • 4842 Beechnut • Houston, Texas 77096

## Get a Jump on Springtime!

*~no job is too big OR too small~*

## BMH CONSTRUCTION

[www.roofsremodelsrepairs.com](http://www.roofsremodelsrepairs.com)

**10% off labor (up to \$300)**

**832-867-4031**

**Insured-All Work Guaranteed  
Free Estimates-Affordable!!**

**exterior/interior paint-kitchens  
baths-roofs-driveways-tile work  
patios-sheetrock repairs**



*~westbury resident for 20 years~*

\$\$\$\$ Free Copy of Tax Return on CD \$\$\$\$  
\$\$\$\$ Free Review of Prior Year Return \$\$\$\$\$

## Pam Schertz, CPA

Small Business Accounting & Tax Services

5322 West Bellfort, Suite 211

Houston TX 77035

281-974-2096



- FULLY INSURED
- FREE ESTIMATES
- NEW ROOF & REPAIRS
- SIDING
- ATTIC INSULATION
- 5 YEAR WARRANTY

713-819-5537 [www.legacyroofers.com](http://www.legacyroofers.com)

## MILLION DOLLAR CLEANERS

### Dry Cleaner and Launderer

Dry Cleaner Laundry Wash Dry Fold  
Suede & Leather Cleaning Alterations Shoe Repair

713-723-7510

5503 Belrose Houston, TX 77035

In Westbury next to Old Post Office

Open Mon-Fri 7am-6pm \* Saturday 9am-2pm

## G&D Remodel and Repair

*Over 14 years of experience.*

All Major Credit Cards Accepted



Carpentry, Siding, Fences Hardy Plank, Roofing  
Ceramic Tile, Floor Tile, Vinyl, Painting, Pressure Washing,  
Plumbing, Gutters

Install: Plasma TV, Counter Tops,  
Cabinet Doors, Windows, Ceiling  
Fans, Light Fixtures, Garbage  
Disposal, Stoves, Water Heaters,  
Filters, Ice Makers, etc.

Satisfaction Guaranteed

Excellent References

office (713) 771-2869 Free Estimates cell (713) 269-9414

# Dick n' Sons

Floor Covering Center

All Major Credit Cards  
Accepted

M-F 8:00-5:00  
THURS. 8:00-7:00  
SAT. 10:00-4:00

# 713.981.1900

6240 Bissonnet @ Hillcroft

[www.dicknsons.com](http://www.dicknsons.com)

Purchase any carpet and your First Annual Cleaning is Absolutely Free!

## CARPET LAMINATE WOOD CERAMIC TILE VINYL!

THERE'S JUST SOMETHING SPECIAL ABOUT A  
NEIGHBORHOOD FLOOR COVERING STORE....COME SEE WHY.  
SERVING WESTBURY FOR OVER 40 YEARS!



Mention this ad and  
receive 15% off any Cleaning Services

# Support the WCC! Pay your dues!

# Neighborhood and Area News

## Holiday Yard of the Month

- Parkwest 1-** 5611 Portal  
Mike Adams & Ray Price
- Parkwest 2-** 5806 Bankside  
Peter and Jennifer Zografos
- Parkwest 3-** 5918 Beaudry  
Kate Fogarty and Family
- Westbury 1-** 5118 Redstart  
Kent Crawford
- Westbury 2-** 5438 Kinglet  
Megan & Roy Trevino
- Westbury 3-** 5726 Cerritos  
Patty Huff & Mark Armbrrecht
- Westbury 3-** 5730 Cerritos  
The De La Cruz and Bangilan Families
- Westbury 4-** 12006 Braewick  
Bob Olsen & Penn Parnell
- Westbury 5-** 10714 Braewick  
Charlie & Mary Welch
- Westbury South-** 5819 Farwell  
Feliciano D. Cervantes
- See website for photos.

## Temporary Barbecue & Smoking Ban to be Lifted in all but Twelve City Parks

Mayor Annise Parker, the Houston Parks and Recreation Department (HPARD) and the Houston Fire Department (HFD) have announced that the temporary ban on barbecuing, grilling and smoking *put in place for all City parks* last September is being lifted, effective today, for all but twelve City of Houston parks.

"This year's drought has been especially devastating to our city," said Mayor Annise Parker. "Since the summer, we've been working to remove fire fuel sources in our parks. As a result of this work and the increased rainfall we've been experiencing, the fire risk has declined. However, there is still concern about 12 heavily forested City parks where the dead tree removal has not been completed. Therefore, the temporary ban on grilling and smoking will remain in place for those parks." Signs will remain in place to advise the public that there is a temporary grilling & smoking ban in effect will remain on place in these 12 parks.

## Parker Elementary Performing Strings

Parker Elementary, a HISD magnet school for music, is pleased to announce that its Performing Strings group has been selected to perform at the prestigious Suzuki Association of the Americas (SAA) conference in Minneapolis, MN, in May 2012. The Parker Performing Strings, comprised of 50 advanced violin and cello students, has received this honor twice before in 1996 and 1998 (when it was held in Chicago). Parker's Suzuki Strings Program has a national reputation for excellence.

Parker students are working to raise \$70,000, to send themselves and 25 chaperones to the conference in Minnesota. They are seeking help from the community through individual donations, corporate sponsorships and various fundraising events.

For more information, please contact Carol Kehlenbrink, Parker Magnet Coordinator at 713-726-2122 or Jason Spencer at the HISD press office at

## Award-Winning Author at JMS

Christopher Paul Curtis, Newberry Award winning author, will be discussing his new book, *The Mighty Miss Malone*, at Johnston Middle School on Sunday, January 15, at 3 PM. Curtis is also the author of *Watson's Go to Birmingham*, *Bud Not Buddy*, and *Elijah of Buxton*. Admission is free. Curtis will be available for book signing after the presentation.

## New Goodwill Select Store

Hillcroft at the Beltway. Wednesdays are Senior discount days. You can drop off donations at the back of the store Mon-Sat from 9am to 7pm and 12-6pm on Sundays. The Maplewood Goodwill Select store continues to operate at Hillcroft next to McDonald's.

[WWW.WESTBURYCRIER.COM](http://WWW.WESTBURYCRIER.COM)



**WHEN YOU WANT THE JOB DONE RIGHT THE FIRST TIME!**

Since 1975

**american SERVICES**



**Call Now: 713-782-2989**

**Leak Detection Experts**



[WWW.ASAMERICAN.COM](http://WWW.ASAMERICAN.COM)

Hello My Name is

**FOUNDATION REPAIR**

**PLUMBING SPECIALIST**

**ROBERT**

- ◆ Exclusive Ameri-Link System
- ◆ Lifetime Transferable Warranty
- ◆ FHANA Approved
- ◆ Licensed & Fully Insured
- ◆ Warranties Available on Existing Piers



- ◆ City Permits & Inspections
- ◆ Hydrostatic Testing
- ◆ Sewer Reroutes
- ◆ Tunneling Experts
- ◆ Leak Detections
- ◆ Gas Leaks & Repair



SAVE \$100.00 OR 5% OFF ANY FOUNDATION REPAIR OR CONCRETE WORK



SAVE \$50.00 OR 5% OFF ANY FOUNDATION REPAIR

NOT VALID WITH ANY OTHER OFFER NEW CUSTOMER ONLY

NOT VALID WITH ANY OTHER OFFER NEW CUSTOMER ONLY

**"CALL TODAY SO I CAN GIVE YOU AN HONEST FREE ESTIMATE"**



**CONCRETE WORK** Driveways, Patios, Etc....

## Westbury/Parkwest Specialist!

**31 yr  
Westbury  
Residents**



**Buy  
Sell  
Lease**

### Tony and Charley Porcarello

***"Who Better to Sell or Lease YOUR Home than  
YOUR Westbury Neighbor!"***

Tony: 713-898-1546 [tporcarello@yahoo.com](mailto:tporcarello@yahoo.com)  
Charley: 713-898-1484 [charley@swbell.net](mailto:charley@swbell.net)  
Office Direct Line: 713-349-7262



Visit us on the web @ [www.porcarello.com](http://www.porcarello.com)

## ASTRO PLUMBING

"YOUR PROFESSIONAL PLUMBER"  
BEST PRICES • FREE ESTIMATES • SENIOR DISCOUNT

CALL JOHNNY  
C: 713-256-0017

JOHN LEWIS  
M16312

ALL MAJOR CREDIT CARDS ACCEPTED

## DAVID J. CROWLEY ATTORNEY AT LAW

Wills  
Probate  
Juvenile Law

P.O. BOX 310218  
HOUSTON, TEXAS 77231

**713-721-2300**

PROUDLY SERVING WESTBURY FOR 35 YEARS



## Legal Eagle CONTRACTORS

**713-723-8850**

Come see our Showroom at  
5008 Locust Street  
at South Rice, Bellaire

Visit our web site at:  
[www.legaleaglecontractors.com](http://www.legaleaglecontractors.com)



**Dan Bawden, President**  
Certified Graduate Remodeler Graduate Master Builder  
Certified Aging-in-Place Specialist  
Certified Green Builder

Top BBB Award Winner - Five Times  
Texas Remodeler of the Year - Three Times  
Houston Remodeler of the Year

**Design and Build  
Kitchens ★ Baths ★ Additions**

Texas Registered Builder # 4301

**Westbury's favorite remodeler  
for over 25 years!**



# BryanCalvinSmith.com



## Independent Insurance Agents & Brokers of America

**TRAVELERS**

**Safeco Insurance**™

Member of Liberty Mutual Group

**713-723-9353**